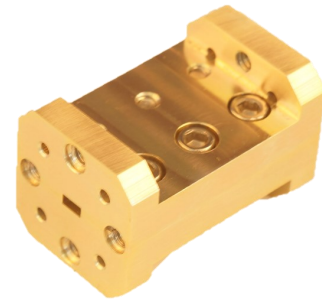


FIBP-9201W1B0 BANDPASS FITLER, WR-10, 91.2 - 92.6 GHz

Features:

- 2 Weeks Lead Time
- Low Cost
- High Rejection
- High Power Handling

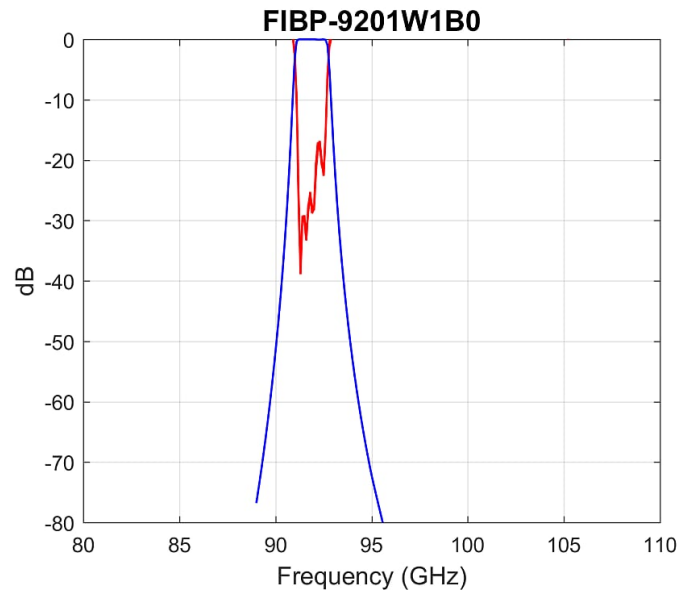


Electrical Specifications:

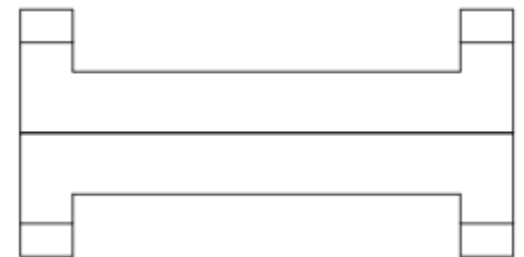
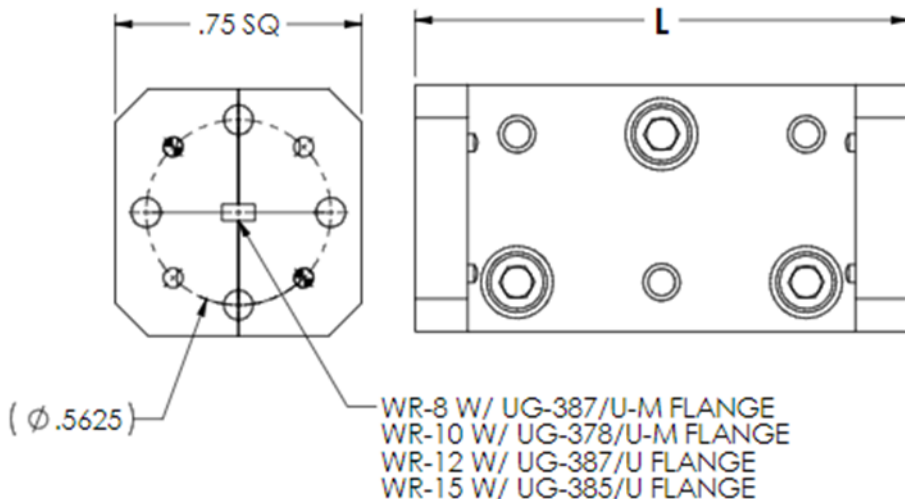
- Passband Frequency: 91.2 - 92.6 GHz
- Passband Insertion Loss: 0.6 dB
- Passband Return Loss: 18 dB
- Rejection (40 dB): < 90.2 GHz and 93.7 - 145.0 GHz

Mechanical Specifications:

- Port: WR-10, UG-387/UM
- Size: 1.00" (L) X 0.75" (W) X 0.75" (H)
- Material: Aluminum / Chromate



Outline: FIBL001-OL00-001



DASH	L (inch)
-001	1.00
-002	1.25
-003	1.50
-004	1.75
-005	2.00

Note: Raytech Inc. reserves the right to change the information presented without notice.