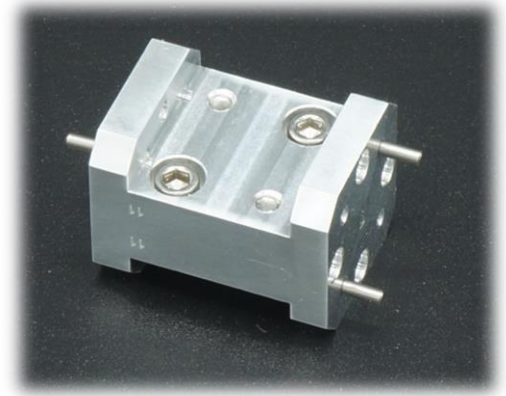


### FIHI-C0F00

### Highpass Filter, 120 GHz

#### Features

- Broad band Rejection
- Sharp Rejection Skirt



#### Electrical Specification

	Min	Nominal	Max	Unit
Passband Frequency	120			GHz
Insertion Loss*		0.5		dB
Return Loss		15		dB
Rejection (40 dB)	DC		113.5	GHz
Ports	WR-8, UG-387/UM			
Size	1.00" x .75 x .75"			

\* Plating Condition: Chromate Coating

