



The Bay Park Conveyance Project

A Western Bays Resiliency Initiative

Stakeholder Monthly Meeting
November 17, 2021



Department of
Environmental
Conservation





Agenda

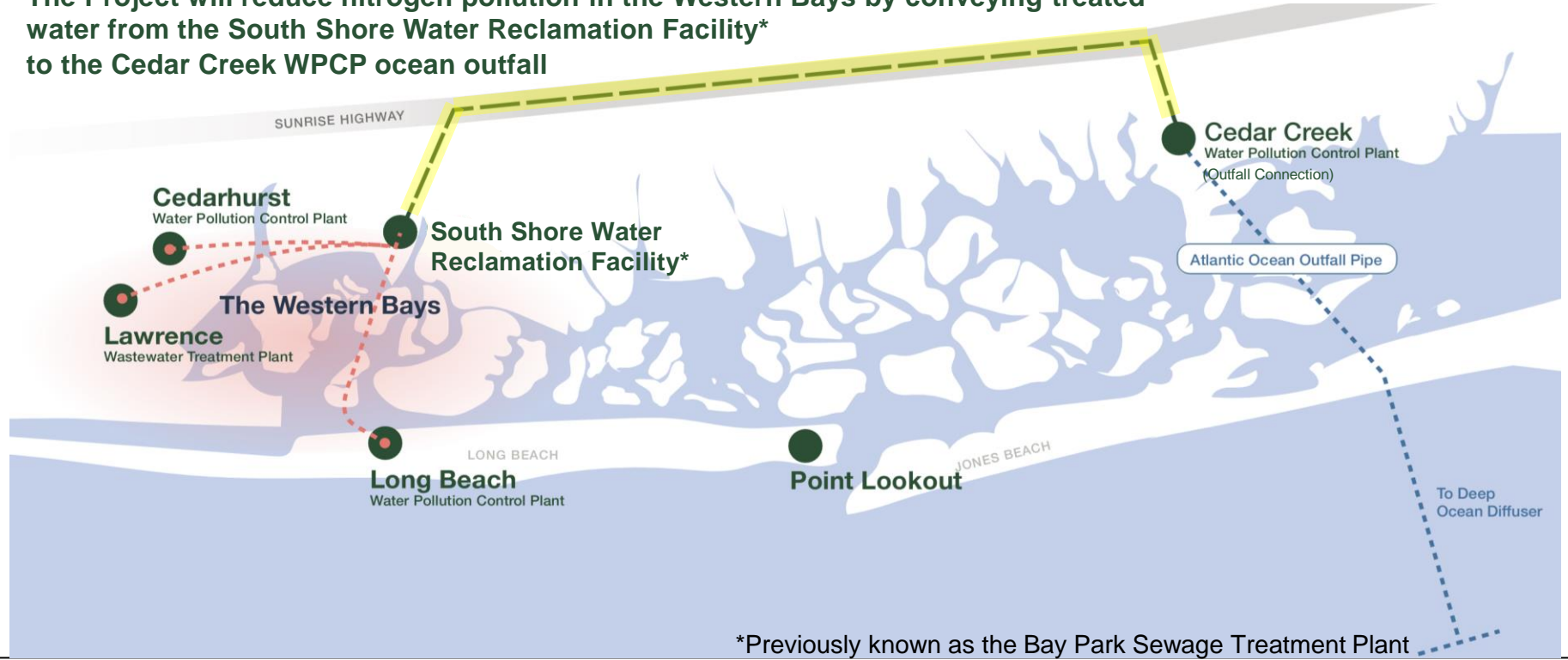
- 1. Project Background**
- 2. Construction Updates**
- 3. Stakeholder Engagement**
- 4. Question and Answer Session**



Project Background

The Bay Park Conveyance Project

The Project will reduce nitrogen pollution in the Western Bays by conveying treated water from the South Shore Water Reclamation Facility* to the Cedar Creek WPCP ocean outfall



*Previously known as the Bay Park Sewage Treatment Plant

Project Benefits



Storm Protection

Spur the rapid ecological recovery of the Western Bays marshlands which will protect coastal communities from storm surge and sea level rise



Quality of Life Factors

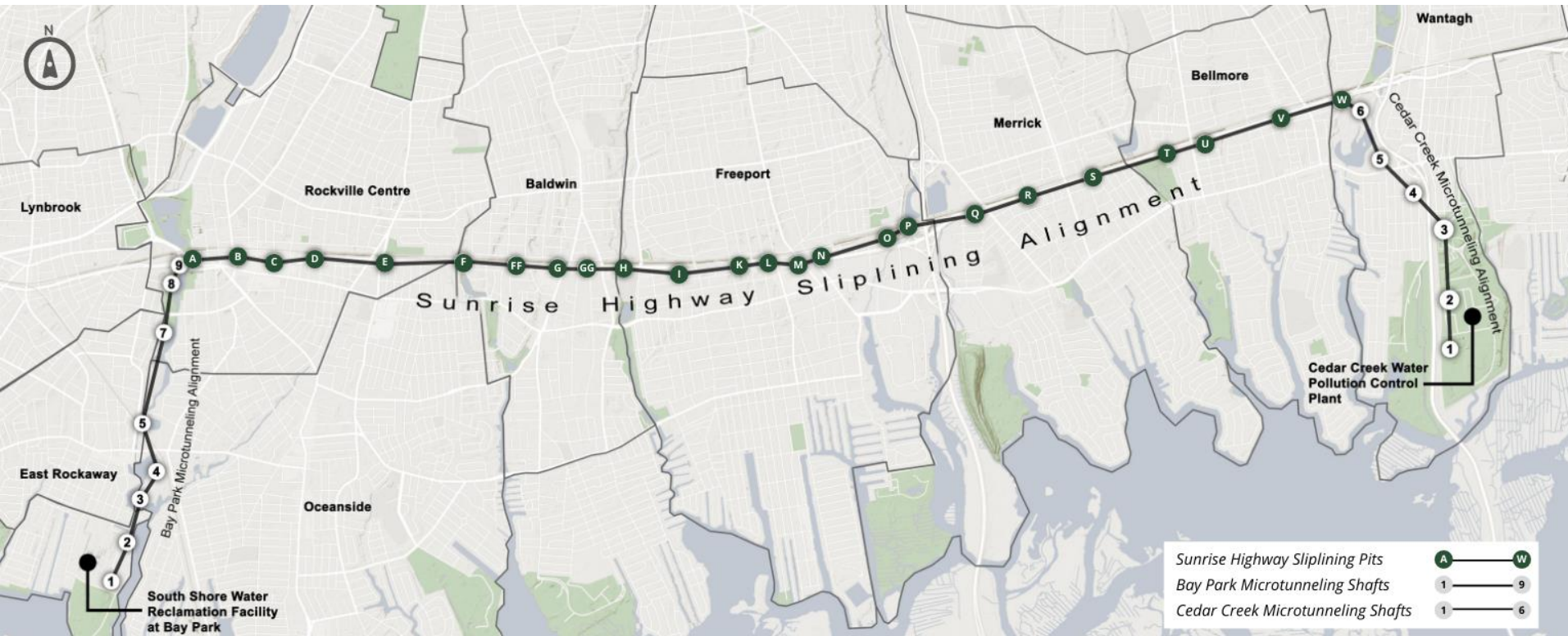
Maximize quality of life by providing residents a place to work and play



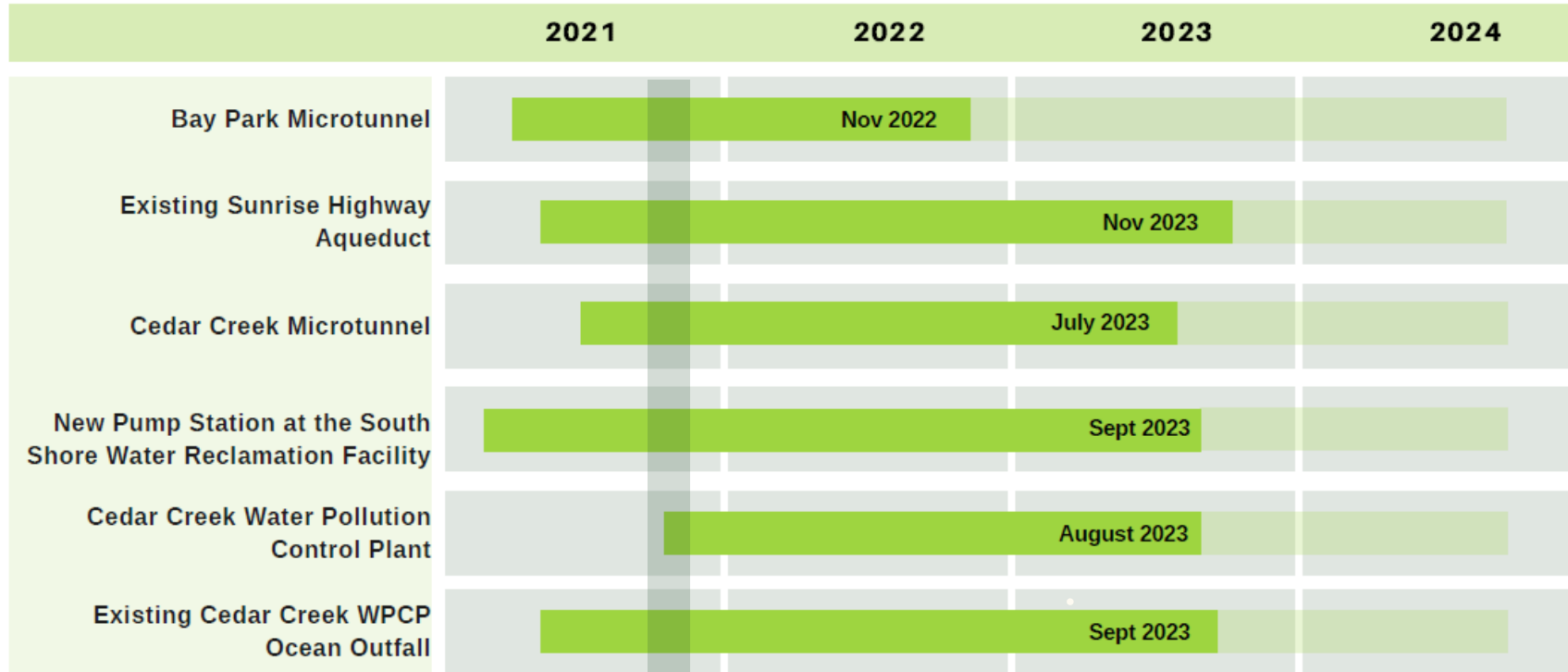
Economic Benefits

The ecological recovery of the Western Bays and improved water quality will enhance and expand water-based recreational and commercial opportunities

Bay Park Conveyance Project Overview



Project Timeline



Final Acceptance Aug 2024

We Are Here

2021 Microtunnel Boring Machine Naming Contest

- In October, project partners, the Nassau County DPW and NYSDEC announced the 2021 Microtunnel Boring Machine (MTBM) Contest for students.
- The contest was open to students in grades 6 through 8 across the project corridor.
- 35 students from 6 schools suggested a name through either an essay or a video.





WESTERN BAYS CONSTRUCTORS
PICONE | NORTHEAST REMSCO



The Bay Park Conveyance Project
INTRODUCING
"P.O.S.E.I.D.O.N."
WINNER OF THE 2021 MICROTUNNEL BORING MACHINE NAMING CONTEST
CONGRATULATIONS TO
Nicco Fontanelli, Sophia Kenn,
Isla Valentino, Matthew Vlahakis
inside School #3, Kristin Stea's Grade 6 Class



Construction Techniques

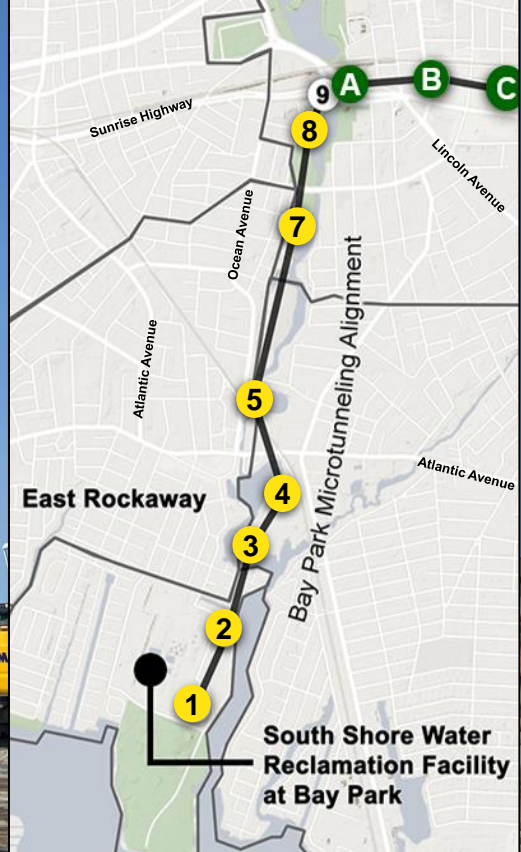
- **Microtunneling** - A technique used to install piping deep into the ground
- **Sliplining** - Utilizes existing infrastructure by inserting a new pipe into an existing pipe
- **Support of Excavation (SOE)** - Used to support the earth during excavation
- **Jet Grouting** - A technique used as a means for groundwater control





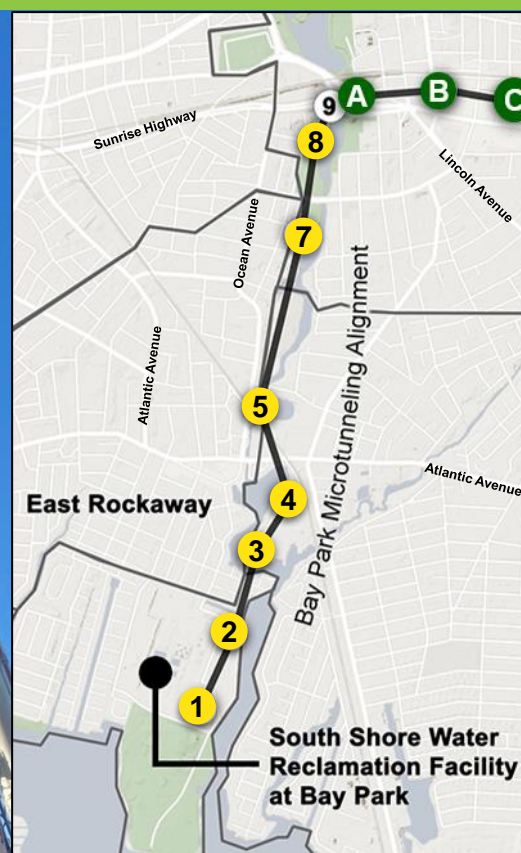
Construction Updates

Bay Park Alignment



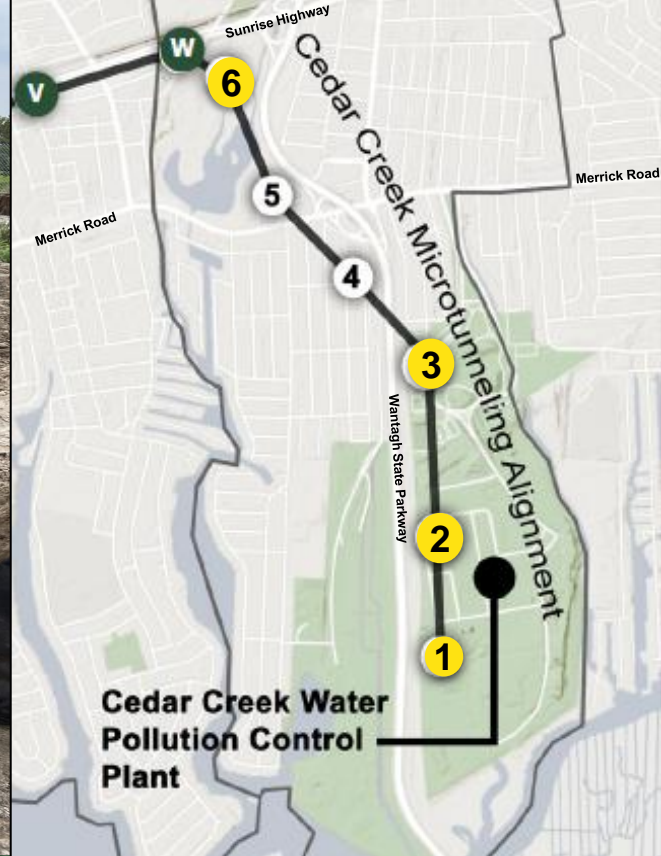
- BP 1: SOE/Wet well Complete, Secant piles 100% Installed, Jet Grout Ongoing
- BP 2: MTBM has been mobilized to the site, Assembly nearing completion
- BP 3: CSM Panels Installed, Jet Grout to follow
- BP 4: Crews are beginning to mobilize to shaft site

Bay Park Alignment



- BP 5: Existing Infrastructure removed and stored, Ongoing Site Setup
- BP7: Site has been prepared in advance of SOE
- BP8: CSM Rig Mobilized to the site
- BP9: Maintenance and Protection of Traffic (MPT) has been installed. Ongoing Site Preparation

Cedar Creek Alignment



- CC 1 and CC 2: Utility relocation complete.
- Machinery and equipment will be brought to both sites throughout November.
- CC2 Secant Piles 50% installed. MBTM mobilization anticipated to begin 11/18/21.
- CC 3: Guide wall installed, SOE installation to commence.

Sunrise Highway Alignment



- Test Pits and Survey Work Ongoing from Pits A – O.
- Pit Q Sheet Pile Installation anticipated to occur first week in December
- A construction entrance has been established at Pit D at Joyce Field in Rockville Centre for storage and laydown of materials
- A construction entrance has been installed at BP Shaft 9/Pit A located at the Sunrise Hwy/Merrick Rd Interchange

Addressing Sunrise Highway Construction Impacts

- Work Zone Traffic Control (WZTC) and Maintenance and Protection of Traffic (MPT) Signage will be in place to assist motorists and pedestrians around lane closures
- Variable Message Signage (VMS) boards will be in place in advance of lane closures
- Text “roadwork” to “888777” to receive updates on County-wide daily road and lane closures



Spotlight on Safety & Construction Site Tidiness



- All work pits and shafts will be enclosed and protected with fencing, inaccessible to the public
- Following all OSHA guidelines
- Community Air Monitoring Program (CAMP) active during construction
- Monitoring for air quality, dust and vibrations
- Quality control team will be present during each operation



Public Outreach

Community Outreach Program

- Door-to-door canvassing
- Construction lookaheads and e-blasts
- Regular meetings with project stakeholders
- Dedicated 24/7 project hotline, email, Facebook and website
- 23 virtual or in-person meetings since NTP
- “Before You Go” Facebook campaign posted every Friday
- Coordination with Nassau County Police Department
- “What’s Happening Here” signs at each work location
- MTBM Naming Contest launched, winners announced
- Attendance at Bellmore Fair on September 25



Nassau County Hazard Mitigation Committee Meeting

- On 11/9/21, the project team hosted the Nassau County Hazard Mitigation Committee Meeting at our Community Information Center in Rockville Center
- Discussed the project and how it relates to the tremendous amount of work being undertaken by Nassau County to increase resiliency across the Island
- First of many in-person meetings to be held at the CIC.



Contact Us



24/7 Project Hotline
(516) 252-6121



Community Information Center
265 Sunrise Highway
Rockville Centre, New York, 11570
**See website for hours*



Email
BayParkConveyance@gmail.com



Facebook
@BayParkConveyance



Website
www.BayParkConveyance.org



Question and Answer Session



Thank You!