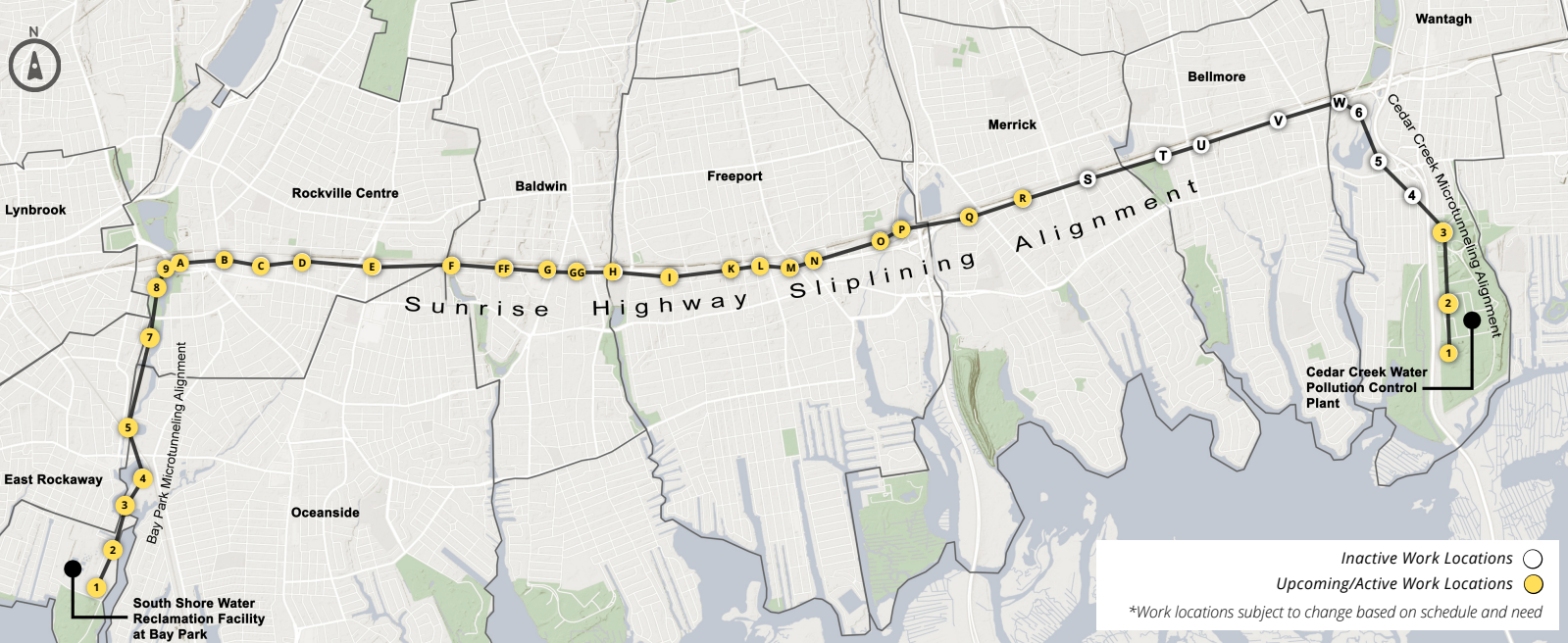


CONSTRUCTION LOOK AHEAD December 2021



Note: The project work locations and description of activities explained below are dynamic and subject to change due to various factors such as equipment and supply delivery or weather. Visit our Facebook page @BayParkConveyance for weekly and more frequent updates regarding project activities, locations, and lane closures. Call the 24/7 Project Hotline at (516) 252-6121 with concerns and questions. Text "roadwork" to "888777" to receive updates on County-wide daily road and lane closures.

SUNRISE HIGHWAY SLIPLINING

During sliplining activities and for the duration of the Project, we ask for your cooperation adhering to traffic safety along work zone areas. Western Bays Constructors (WBC) is coordinating with New York State Department of Transportation (NYSDOT) to communicate lane closures on their Variable Message Signs (VMS). WBC is also communicating with Nassau County Traffic Management about weekly lane closures.

- Pit Q is located just west of Babylon Turnpike in Merrick. In advance of work activities at Pit Q, crews will place long-term Maintenance and Protection of Traffic (MPT) and Work Zone Traffic Control (WZTC) signage and barriers at the pit location.
 - Sheet pile installation is expected to begin in mid-December and continue for approximately four weeks.
 - Work at this location will take place overnight, from 9PM - 6AM. During these hours, two eastbound lanes will be closed, and one eastbound lane will remain open. Three lanes of traffic will be maintained during the day from 6AM - 9PM.
 - Commuters will notice concrete barriers, barrels, and signage in the eastbound middle lane of Sunrise Highway for the remainder of construction at Pit Q from approximately the Meadowbrook Parkway to Babylon Turnpike.
 - Construction at this location is anticipated to be complete in spring 2022.
- Pit R is located on the south side of Sunrise Highway, east of the Meadowbrook Parkway in Merrick between Hewlett Avenue and Wynsum Avenue.
 - Towards the end of December, WBC will mobilize to Pit R in advance of construction.
 - In advance of work activities, MPT and WZTC signage will be placed in the area.
 - Work at this location will take place overnight, from 9PM - 6AM. During these hours, two eastbound lanes will be closed, and one eastbound lane will remain open. Three lanes of traffic will be maintained during the day from 6AM - 9PM.

SUNRISE HIGHWAY SLIPLINING

- A construction entrance has been established at Pit D, located at Joyce Field in Rockville Centre on the north side of Sunrise Highway, for storage and laydown of materials.
 - The sidewalk in front of Joyce Field, between Morris Avenue and N. Forest Avenue, is closed for the duration of the Project until 2024. MPT and WZTC signage have been placed in the area to assist pedestrians.
 - When walking past Pit D, pedestrians will be directed to cross Sunrise Highway at either N. Forest Avenue or Morris Avenue.
- A construction entrance has been set at Bay Park Shaft 9/Pit A, located at the Sunrise Highway/Merrick Road Interchange in Rockville Centre.
 - One eastbound lane on the Merrick Road exit ramp onto Sunrise Highway is closed throughout the duration of construction at this location, which is expected to last through 2022. MPT and WZTC signage have been placed in the area to assist with the flow of traffic.



Construction at Pit P along the Sunrise Highway Alignment (October 2021)

BAY PARK MICROTUNNELING

In the immediate areas surrounding Bay Park and Cedar Creek microtunneling shaft sites, residents will notice an increase in construction vehicles and crews in the area. WBC will continue to monitor and control any potential noise, dust, vibrations, and settlement from construction activities. Unless otherwise specified, work activities are expected to occur between 6AM – 5PM, Monday through Friday.

BAY PARK SHAFT 1

Shaft 1 is located within the footprint of the South Shore Water Reclamation Facility at Bay Park (formerly known as the Bay Park Sewage Treatment Plant). Next to Shaft 1, crews are building a new pump station, a wet well, and a diversion structure. This will be the first receiving shaft for the Microtunnel Boring Machine (MTBM) arriving from Bay Park Shaft 2.

- Crews are continuing to install jet grout to seal Shaft 1 from groundwater infiltration. Following this activity, extensive testing of the jet grout layer will commence.
- In early December, crews will complete excavation of Shaft 1. Once completed, crews will begin reinforcing shaft walls in advance of microtunneling.
- Work activities at Shaft 1 will continue through December. Following installation of jet grout, crews will begin to excavate the wet well.



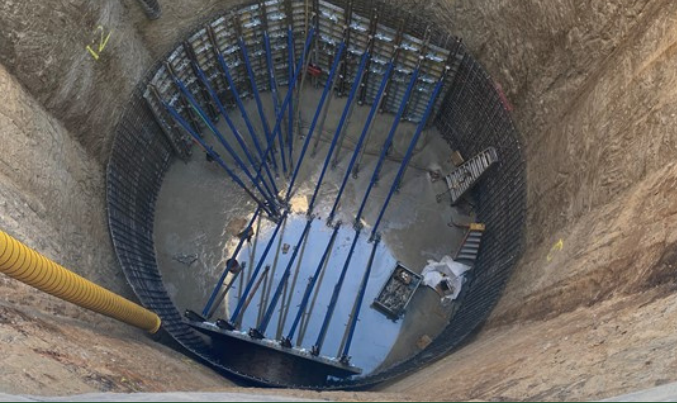
Shaft excavation at Bay Park Shaft 1 (November 2021)

BAY PARK SHAFT 2

Shaft 2 is located within the boundaries of Nassau County's Bay Park, at the northeast corner of Marjorie Lane.

- Shaft 2 is constructed in advance of microtunneling to Shaft 1. The first of two MTBMs has arrived on site and is in the final stages of assembly.
- Once the MTBM is assembled, preparations will continue throughout December so that microtunneling can begin in January 2022.
- Microtunneling is a safe, effective way to install piping deep into the ground, avoiding long trenches and surface disturbance.
- The parking lot on Marjorie Lane, adjacent to Shaft 2, has been reduced to 21 spots for the duration of construction at this location. Work is expected to last until approximately spring 2022.
 - The one-way exit out of this parking lot will remain closed for the duration of construction at this location. The current entrance has been repurposed for two-way traffic during this time.

BAY PARK MICROTUNNELING



Rebar Installation at Bay Park Shaft 2 (November 2021)



MTBM named MARSH-MELLOW at Bay Park Shaft 2 (November 2021)

BAY PARK SHAFT 3

Shaft 3 is located on private property, off New Street in Oceanside, which is temporarily leased for construction purposes.

- Crews have completed the installation of Support of Excavation (SOE) as well as jet grout at Shaft 3
- In December, WBC will begin excavating Shaft 3.

BAY PARK SHAFT 4

Shaft 4 is located on private property, off New Street in Oceanside, which is temporarily leased for construction purposes.

- Crews are preparing the area of Shaft 4. Machinery and equipment will continue to be brought to the site throughout December.

BAY PARK SHAFT 5

Shaft 5 is located at the East Rockaway Oxbow Park, off Ocean Avenue near the East Rockaway LIRR Station.

- Crews are preparing the area of Shaft 5. Machinery and equipment will continue to be brought to the site throughout December.
- Oxbow Park will remain closed until approximately August 2022.

BAY PARK SHAFT 7

Shaft 7 is located at the Rockville Centre Department of Public Works Yard, off Mill River Avenue and Riverside Rd.

- Crews have prepared the area and will continue to store materials at the site in preparation for SOE equipment mobilization which is expected to occur in January 2022.

BAY PARK SHAFT 8

Shaft 8 is located at Rockville Centre's Lister Field, at the Mill River Complex Park.

- Following successful mobilization from Bay Park Shaft 3, crews will continue to utilize the Cutter Soil Mix (CSM) rig in anticipation of jet grout installation, expected to begin in January.
- Ongoing coordination with Rockville Centre is taking place to minimize impacts to the recreational use of Lister Field.



Installation of CSM Panels at Bay Park Shaft 8 (November 2021)

BAY PARK SHAFT 9

Shaft 9 is located at the Sunrise Highway/Merrick Road Interchange in Rockville Centre.

- A construction entrance has been set at Shaft 9/Pit A. Please refer to the Sunrise Highway Sliplining section for activities impacting Sunrise Highway and lane closures.
- MPT are in place throughout the duration of this work until late 2022.

CEDAR CREEK MICROTUNNELING

CEDAR CREEK SHAFT 1

Shaft 1 is located within the footprint of the Cedar Creek Water Pollution Control Plant (WPCP). Work at this location will have no noticeable impact to Cedar Creek Park users.

- Crews are continuing to perform utility relocation at Shaft 1. Following utility relocation, crews will begin to install guide wall during the month of December.

CEDAR CREEK SHAFT 2

Shaft 2 is located within the footprint of the Cedar Creek WPCP. Work at this location will have no noticeable impact to park users.

- Crews are beginning to install jet grout at Shaft 2 throughout December.
 - This activity is expected to last from 6AM - 7PM, Monday through Friday, for approximately four weeks.
 - Following this activity, excavation of Shaft 2 will commence in January 2022.
- In early December, the second MTBM will continue to be delivered to Shaft 2.
 - No road closures or traffic impacts are anticipated to occur as a result of this delivery.



SOE installation at Cedar Creek Shaft 2 (November 2021)

CEDAR CREEK SHAFT 3

Shaft 3 is located at Cedar Creek Park, near the entrance to the Wantagh State Parkway and Jones Beach Bike Path.

- SOE installation which began in November will continue throughout December.
 - This activity is expected to last from approximately 6AM - 7PM, Monday through Friday for approximately four weeks.
 - The Jones Beach Bike Path will remain open to the public throughout construction. While all active work will be confined to a fenced-in site, construction-related vehicles will need to enter and exit the site. Please be mindful of construction vehicles as they enter and exit the park and follow signage and/or direction from flagging personnel in the area.

For the most up-to-date information on lane closures on a weekly basis, please visit the Project Facebook page.

Did you know?

At its peak in the mid-nineteenth century, the Great South Bay employed hundreds of Long Island residents and supported the commercial oyster and clamming operations which spanned the entire length of the Island. Later, overfishing and changes in water quality led to the decline of the Great South Bay's oyster industry in the 1930s and the hard clam population in the 1980s. Initiatives to improve water quality and restore shellfish populations across the Island continue today.



Ocker's Oyster Plant, West Sayville NY (Circa: 1890)

Credit: LongIslandTraditions.org