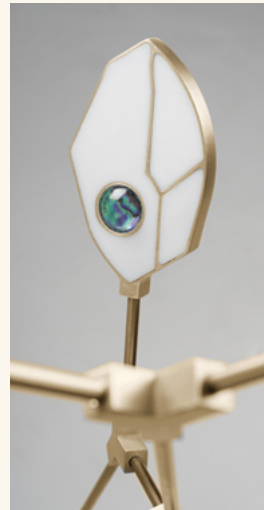
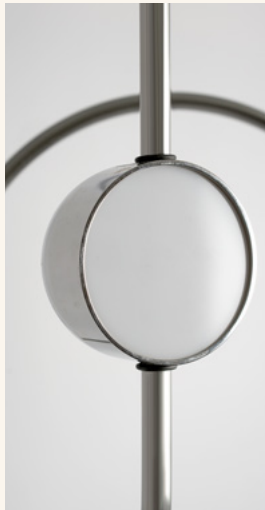




OVATURE STUDIOS



Dawn Collection

ABOUT MATT HOLLEMAN

Spending his early years in Papua New Guinea where his parents served as missionaries, Matthew Holleman's journey has been as creative as his work. After two years studying medicine in New Zealand, Matt dropped out to live on a boat touring the Pacific Islands. It was here he discovered a love for musical composition. After graduating from The New Zealand Music School, Matt joined an NGO in Kenya and it was almost seven years later when a yearning to explore his creative side was rekindled. Matt moved to London and was introduced to the world of sculptural lighting.

"The world of sculptural lighting was where I felt I had truly discovered my artistic fit."

This marked the beginnings of Cameron Design House where Matt would eventually create work for Elton John and One World Trade. With so many ideas in his newfound creative outlet, Matt needed space to explore his own vision. He moved to Sweden with his partner and it was here where Matt married the simplicity of Sweden's nature with the chaos of his own wanderlust.

When Matt isn't in his studio, he's spending time with his children, Forest and Bonnie, or working on his classic 1945 Triumph motorcycle. He lives and works on the East Coast of Sweden with his partner Sofia and their family.







Bonnie

The Bonnie range is designed around the stylized form of a Saffron flower, known around the world for its valuable beauty, fragrance, and essence.

Each organic flower-like form is stamped, molded and polished by hand from solid brass or stainless steel (depending on the required finish). They reflect a hidden LED light source, resulting in a warm and decorative glow.



BONNIE CONFIG 1



BONNIE CONFIG 2



BONNIE CLUSTER





Dia

Dia is a sculptural chandelier inspired by the theme of juxtaposed melody lines. Each frame (or melody) is hand-rolled with all joints discretely concealed within the circular light source. These LED light sources can be articulated to angle ambient light in desirable directions.



DIA CURVE SINGLE



DIA CURVED, CONFIG 1 & 2



DIA STRAIGHT

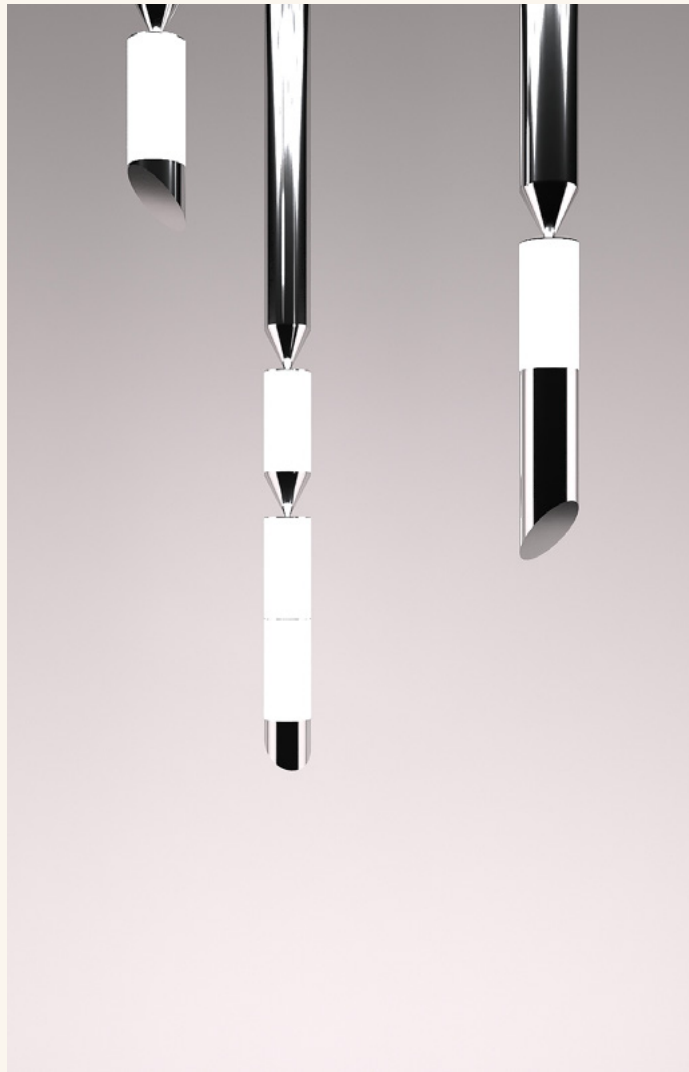




Gwen

Like stalactites, the silhouette of the Gwen range is as pivotal to the experience as the shape of the object itself. Subtle asymmetric shapes allow the piece to take different forms at every angle.

The functional LED light source is softly diffused by whitened glass, contrasting the hand-polished semi-precious metal sections. Gwen can both make a statement as a stand-alone pendant, or be grouped in arrangements for dramatic effect.



GWEN CEILING



GWEN FLOOR



GWEN TABLE





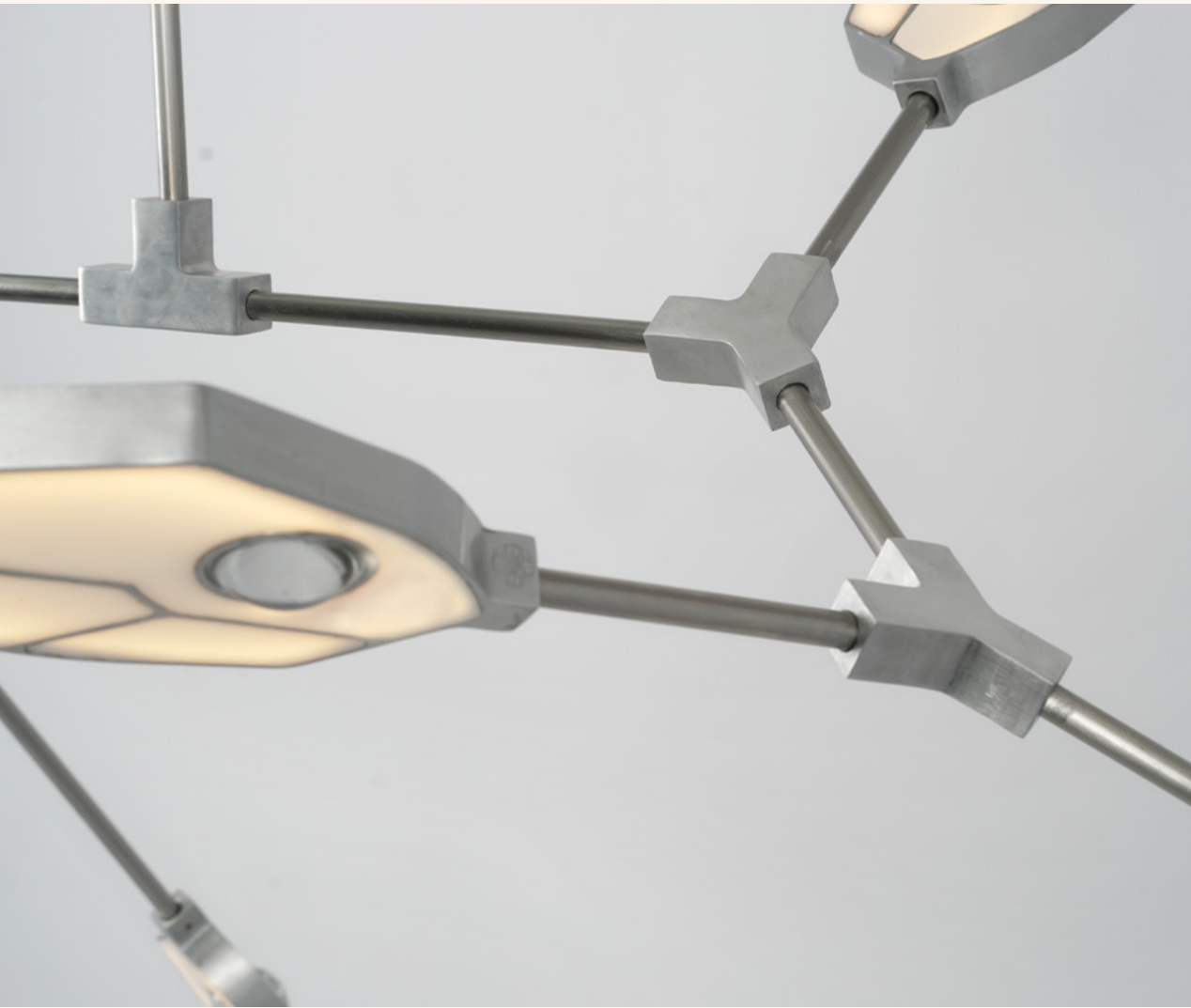
Joni

Taking inspiration from the necessity of light for life, the Joni range is a portrayal of photosynthesis, the process by which plants convert sunlight to food.

Within each leaf-like LED light structure, a crystal hemisphere magnifies an iridescent Paua shell, native to New Zealand's east coast. Joints at every intersection of the brass frame allow the piece to be arranged into unique variations on hanging.



JONI CONFIG. 1



JONI CONFIG. 2





Laur

Inspired by the three states of matter, Laur combines semi-precious elements of brass, onyx, and hand-blown glass in playful interconnecting arrangements, some with functional LED light and others in ornamental configurations.

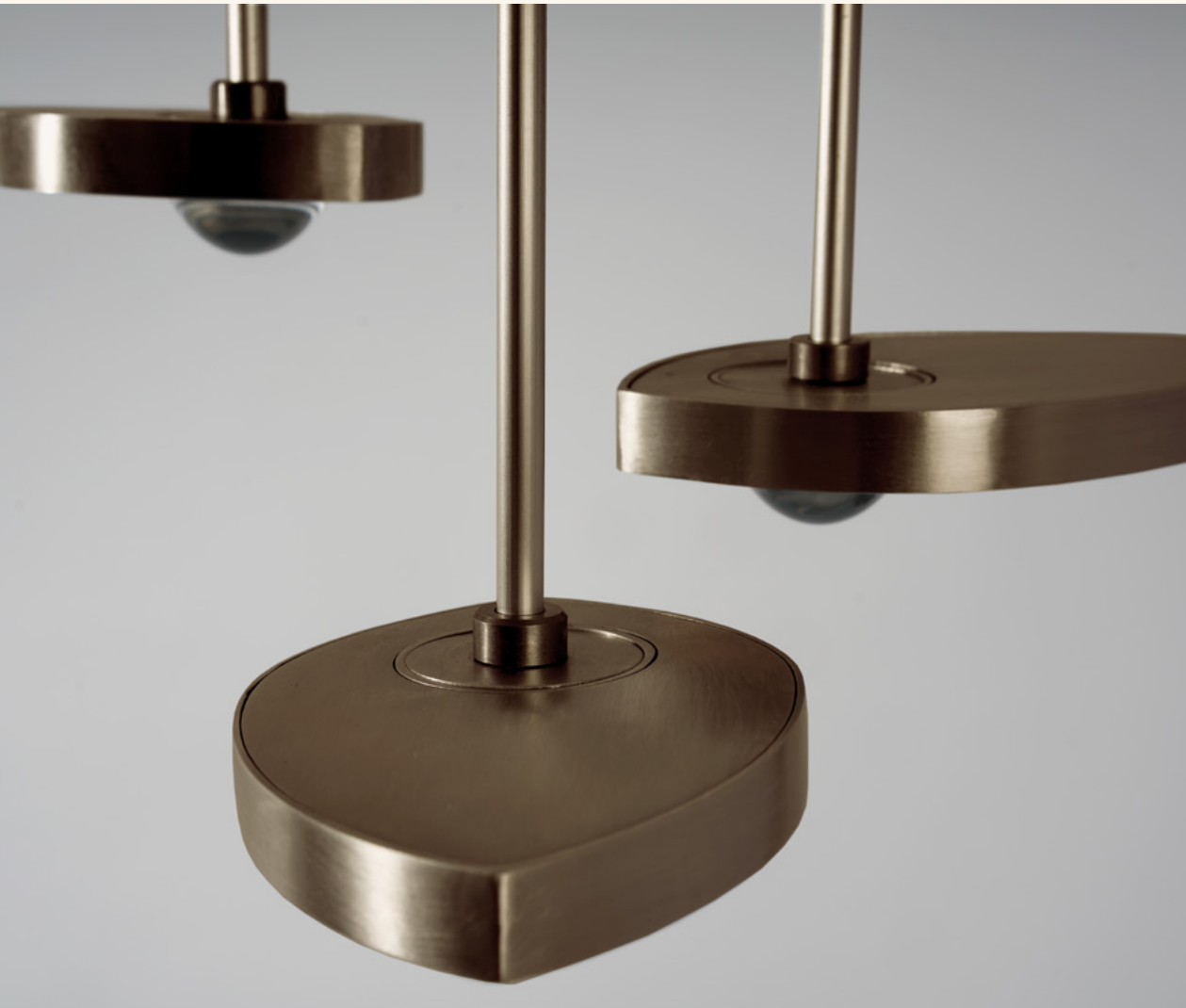


LAUR CHANDELIER - SMALL CLUSTER



LAUR CHANDELIER - MEDIUM CLUSTER



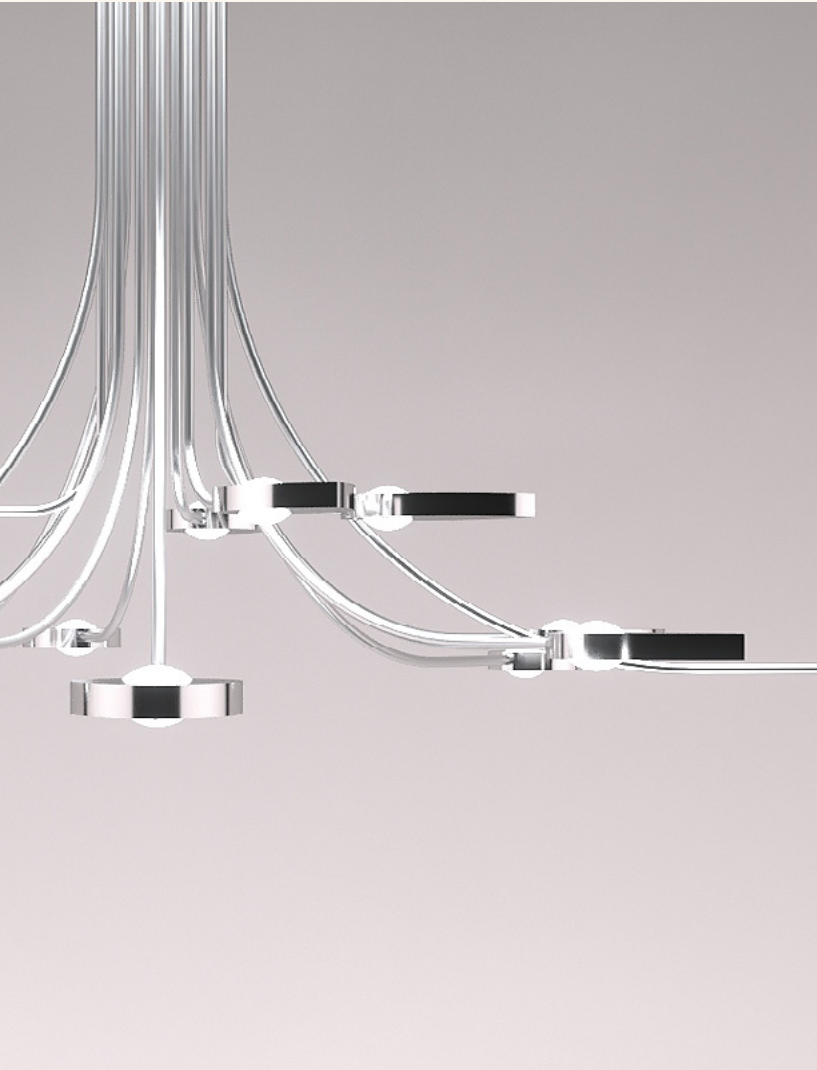


Lilly

Lilly is a contemporary chandelier that challenges the differentiation of room and object. Formed from solid brass milled petals, each LED light source contains a single crystal hemisphere, absorbing and reflecting its environment to make it part of the piece.



LILLY CONFIG. 1



LILLY CONFIG. 2





Rone

The Rone range is an exploration of the delicate balance of humble forms. In simplicity, quality is at the utmost importance and our solid brass or stainless parts (depending on required finish) are painstakingly CNC milled or spun before being hand-finished. Functional LED light is evenly diffused by whitened glass.



RONE CEILING



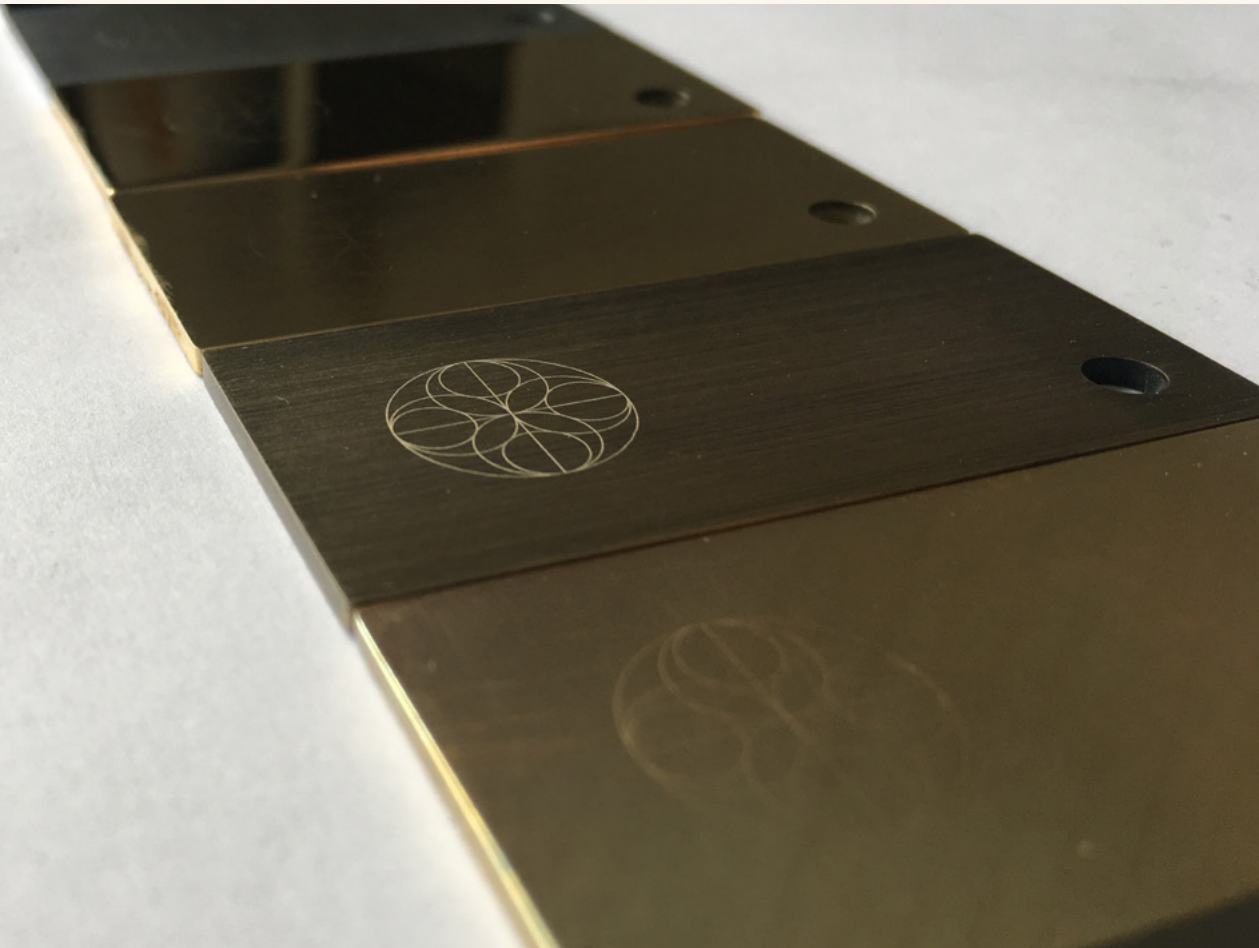
RONE FLOOR



RONE SCONCE



RONE TABLE



Materials and Finishes



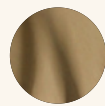
Brushed Brass



Brushed Chrome



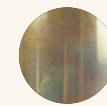
Antiqued Bronze



Polished Brass



Polished Chrome



Scalded Brass



Scalded Silver