



Working together to improve early childhood development outcomes by strengthening connections for families

DATA COLLECTION

A wide range of community voices were gathered via:

- Surveys
- Focus Groups
- Interviews
- Service Provider engagement
- EDI Data review (HELP)
- Strengthening Transitions to Kindergarten (SEY2K) SD survey

KEY SOCIOECONOMIC & GEOGRAPHIC INFLUENCES

Key community characteristics impacting families are:

- Rapidly gentrified community
- Very high housing costs and high cost of living
- Young population with many new families
- Lack of certain direct services in the Village, including health care
- Some families experience food insecurity

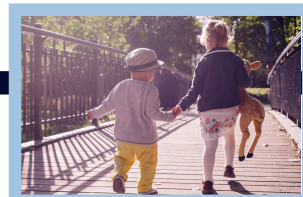


Parenting Challenges

- A lot of newcomers and parents lacking family supports and/or supportive friendships
- Concerns over child development, separation anxiety and lack of socialization
- Lack of parent awareness of resources and supports and/or how to access them
- Parent stress levels are high and parents indicate needs for respite and more support
- Isolation during Covid and resulting inconsistency in program delivery and participation

Community Strengths

- Identified cohesion in communities; often noted as connected, vibrant & welcoming
- Many families in Cumberland with safe neighbourhoods for children to play
- Strong range of early years community programs and offerings
- Great accessibility to nature, outdoor play and community infrastructure
- Informal social groups and connections often form organically
- Responsive Village government and great community events



PARENT & COMMUNITY VOICES

There is lack of knowledge and access to support programs and resources

We need more programs for under 3's & more inclusive programming

We need to support families in emerging from Covid and reconnecting each other and accessing supports

My child hasn't learned social cues or about routines and structures to prepare for school

I don't know how or where to get information or support for parenting

There is so much to do in Cumberland!

I feel very connected here. I am close with my neighbours and the kids are always playing in the neighbourhood

I see an overwhelming number of other parents suffering from anxiety and depression and some are disengaged and fearful

I don't have any extended family here or people to lean on

There is a lot of childhood anxiety in the kindergarten classrooms

PARENT VISIONING: THEMES

HEALTHY CHILDREN, CONNECTED FAMILIES

Parents have supports and deeper connections to manage stress and improve wellbeing

Families are accessing services supports and resources to understand & meet their child's needs

The welcoming and vibrant characteristics of Cumberland expand to all families in an inclusive and engaging way

Children are socially comfortable and confident with tools to manage anxiety and healthy child development

PARENT VISIONING: IDEAS

Offer more diverse and inclusive opportunities for families to connect and children to play and develop

Host an open house series for families to network & access resources and services

Create a Family navigator role to build support and connections for families and connection w/ community partners & initiatives

Establish a communication tool to connect families and coordinate meet ups

Develop an awareness & outreach campaign to reconnect parents as we emerge from Covid

Create safe & covered outdoor early childhood play and gathering spaces

Identify indoor meetup spaces for parents to gather and socialize (days and evenings)

Participate in the newly proposed Community Health Care centre advocate and partner for EY supports

Encourage & support self-starting moms to create informal networks and peer interactions

NEXT STEPS

1. Host a meeting with parents to review the ideas above. Identify gaps, prioritize choices and expand upon proposed ideas
2. Continue to attend community meetings and explore partnerships and existing initiatives
3. Host a community meeting to review and discuss innovation ideas and assess for feasibility & viability. Select top 1 or 2 choices
4. Develop an innovation plan and begin steps to implement it

