



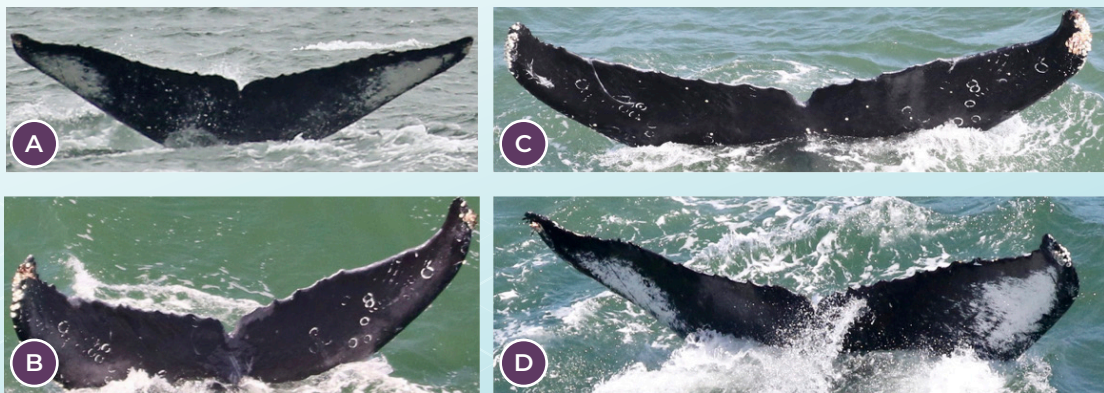
## Have you ever wondered how scientists tell different whales apart?

Humpback whales are found in all of the world's major oceans, and a common site in California near The Marine Mammal Center's hospital, as well as the waters of Norway near Kvarøy Island. To better understand how the whales behave and if they are healthy, scientists need to know each individual whale. Luckily, each humpback whale looks a little different and by looking at the colors and pattern on their fluke, or tail, it is just like a name tag!

Take a look at the pictures of humpback whale flukes from researchers at The Marine Mammal Center. Notice each one is special and like a fingerprint for a humpback whale.



Can you help researchers figure out if they are seeing the same humpback whales? Take a look at the pattern and see if you can match up the pictures of the same humpback whales! **(If you get stuck, there's an answer key on the next page!)**



### Save the Marine Mammals!

Complete this exercise and post your results to your social account (or DM us). When you tag #KvaroyKids, we'll donate \$1 for every completed activity, until we reach \$1000!



The Marine Mammal Center.

# Whale spotting key

A and D, and B and C are the same humpback whales!

