

TEN
THIRTY
THREE

plug work

“Just Press Power”

Turnkey. Tech Included.

CLASS A LOFT OFFICE



Chicago's
7th true
Turnkey
Solution

Fully furnished and technology equipped office suites enhanced by a modern food and beverage program.

“

We cut your installation cost, so you can focus on successfully running your business.

”

Flexible & All-Inclusive

Plug + Work's flexible commitment structure provides the convenience of a turnkey all-inclusive suite of services and products ideal for a quick and painless relocation and installation.



Amenities Included



Fully Furnished Office Spaces



High Speed Wifi



Parking



On Call Service



One flat Payment



Technology



(Re) Loaded Pantry



Flexible Commitment



Security



Privacy



Bike Parking



24/7 Access

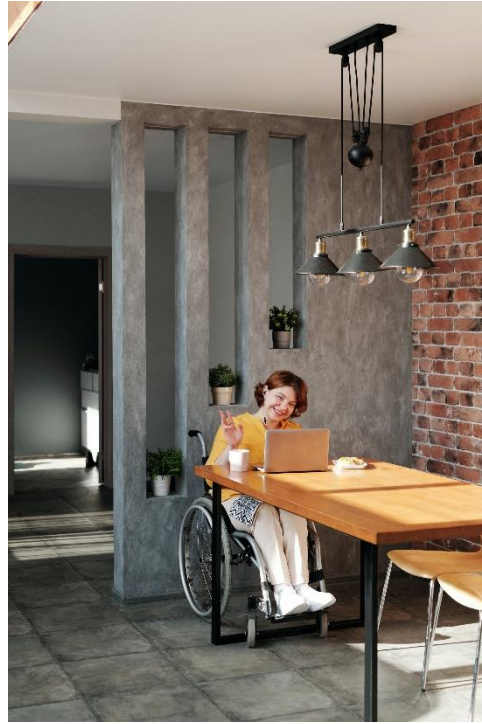


Speed


30-40 days

to a fully functioning office





Your Space. Your Team.
Your Privacy.

	WeWork	plug  work
Model	Co-working, shared space	Private Class A office space
Pricing	Dependent on per desk/office acquired - typically above market	Competitive market pricing based on space and services
Lease terms	<ul style="list-style-type: none"> • Short term leases at premium pricing • Transient locations 	<ul style="list-style-type: none"> • 1 - 10 Year Leases • Dedicated Presence

**Why
we are
*different***

JUST PRESS POWER

plug work



Fulton South

Office that
can't go
unnoticed



Abundant
Parking



Brick & Timber
Creative Loft



True Turnkey
Solution

Turn the Key, We'll take care of the rest

Spaces starting at 4,000 square feet, comfortably distancing 25 or more employees.

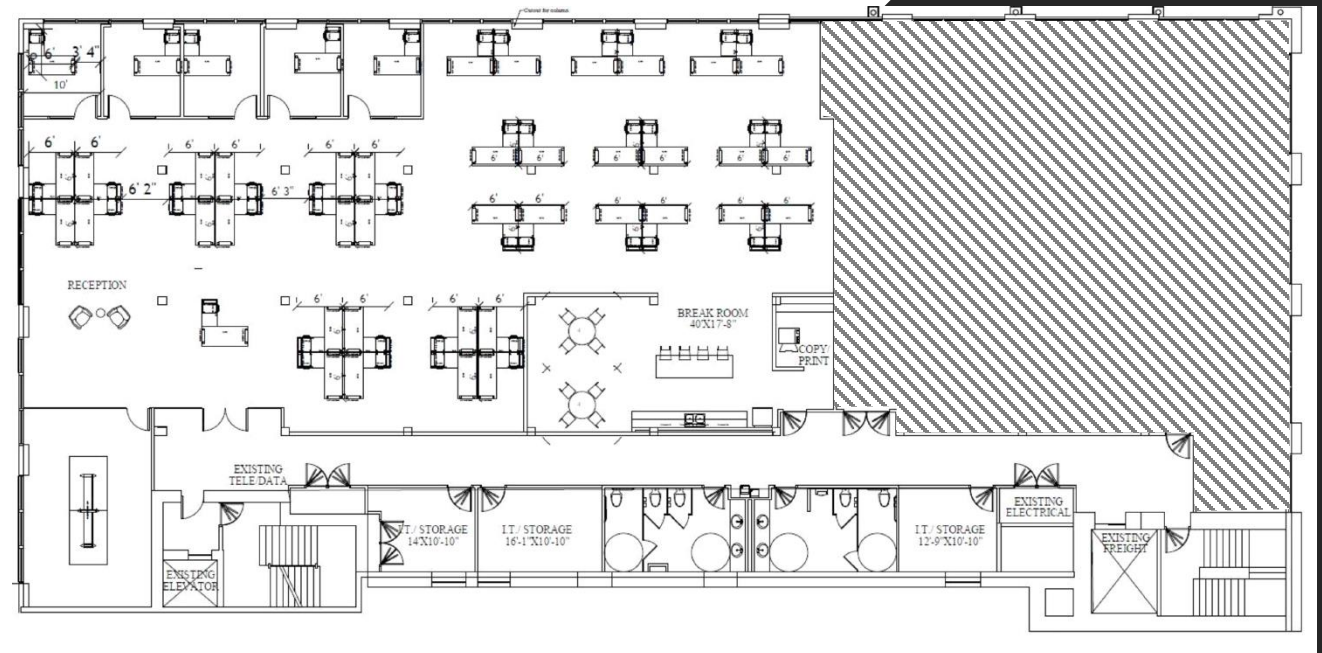


SPACES FROM
4,000 RSF

12,500 RSF
FLOOR PLATE

49,293 RSF
block spanning
floors 2-5

Representative Suite 200 · 8,159 sf



plug + work

Get in touch

WWW.1033WVB.COM

Brittany
Hughes

312 424 8028

brittany.hughes@cushwake.com

Jack
McKinney Jr.

312 819 4404

jack.mckinneyjr@cushwake.com