

# THE VEGA

MADE FOR DURHAM. BUILT FOR LIFESTYLE.



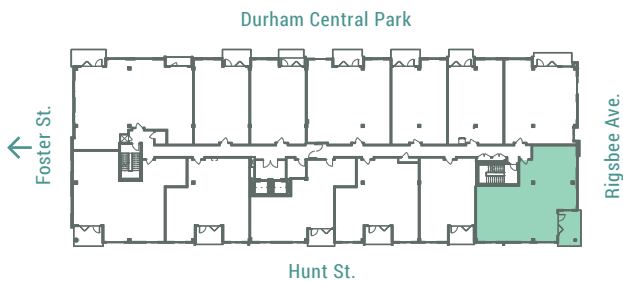
## RESIDENCE | B5

2 Bedroom with Den, 2 Bath  
1,548 Interior SF, 181 Terrace SF

### FEATURES

- City view
- Gourmet kitchen
- Hardwood flooring in living areas
- Expansive windows
- 10' wide folding glass terrace doors with integrated screen

FLOORS 3-7 | 308,410,508,608,708



Photography, renderings, floor plans, project descriptions, and details provided herein are to describe and highlight features and amenities of the MHA Works Lambert Development plans and are used for marketing purposes only. This website is for informational purposes only and is subject to change without notice. Features, dimensions, room configurations identified herein may vary during construction and finishes may deviate from what is stated herein. Brands, products, and materials with similar superior quality may be substituted by product or material availability if deemed necessary. Furniture layouts shown are for concept only. 6/20

919.973.1516 | [THEVEGADURHAM.COM](http://THEVEGADURHAM.COM)