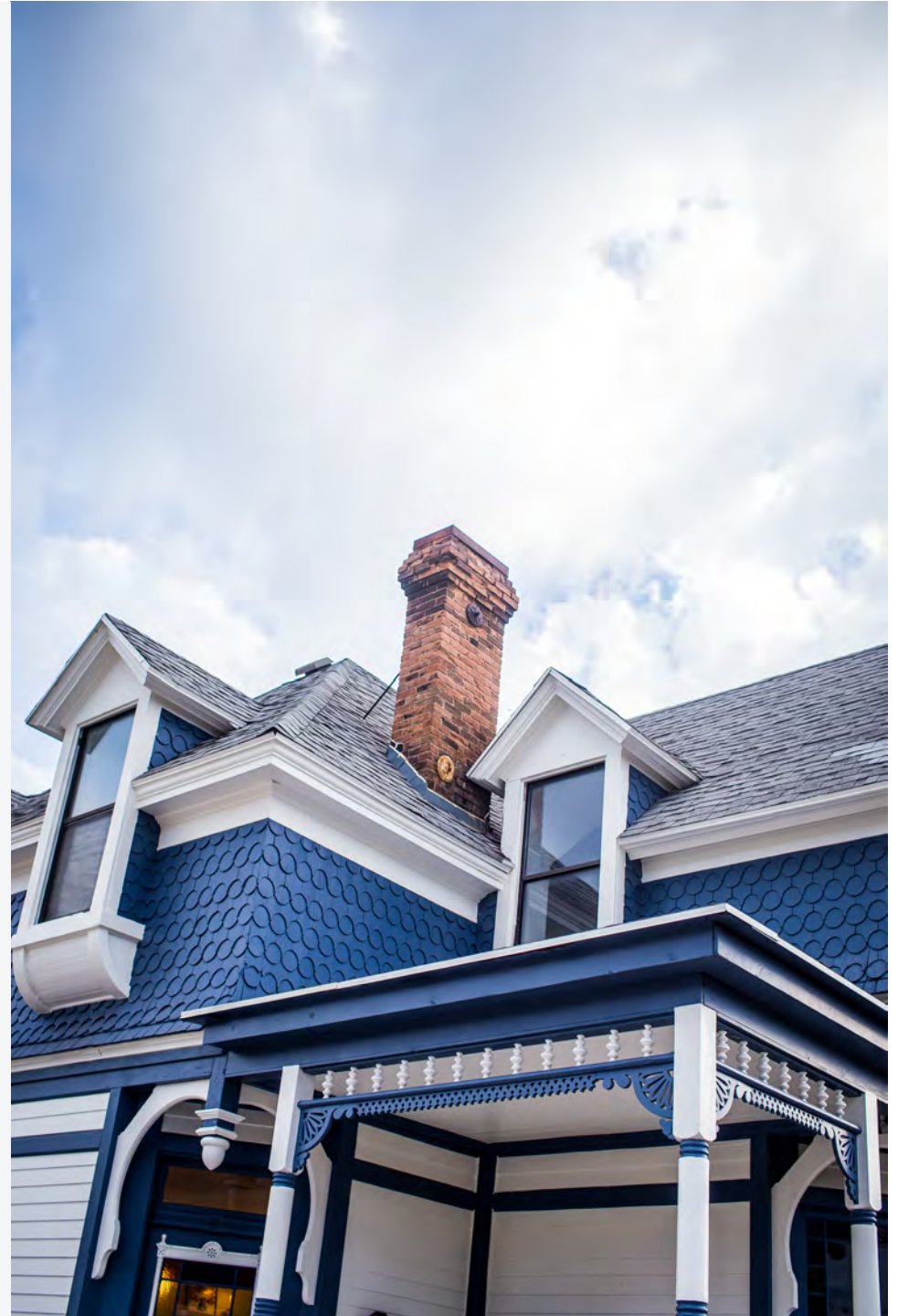


ENCIRCLE
**ANNUAL
REPORT**

2017



NO SIDES

OUR MISSION

embrace and sustain every
LGBTQ+ youth, every family,
and every community

ONLY LOVE



AT A GLANCE

MONTHLY VISITORS

750

AMOUNT DONATED

\$560k



PROGRAMS

Programs are the heart of Encircle. They're inspired by research, customized for connection, and designed for every single LGBTQ+ individual.

WEEKLY
PROGRAMS

8

SUPPORT
GROUPS

11

WEEKLY THERAPY
SESSIONS

25

WEEKLY
VOLUNTEERS

35

ELEVATE

Speaker series in which Encircle invites successful, thriving, inspirational LGBTQ+ individuals with diverse backgrounds and life journeys from the community to come and share their story. Elevate gives LGBTQ+ youth a story that they can connect with and relate to, creates the space for parents to attend with their youth, and leaves families feeling inspired and hopeful.

35

AVG. NO. OF
ATTENDEES /
WEEK



SERVE



30

NO. OF
COMMUNITY
ORGANIZATIONS
SERVED IN 2017

SERVE is a service based program designed to foster connection between youth, their families, and the community at large. As we bring the community and families together through service, we create the space for validation, empathy, and understanding, and we are able to embrace and sustain all members of the community.

60

EDUCATIONAL TOPICS
DISCUSSED

21

AVERAGE AGE OF
GUESTS



TOOLS TO THRIVE

TOOLS TO THRIVE is a discussion-based program meant to facilitate growth and discovery in an intimate setting where community members can talk openly about the challenges faced by LGBTQ+ people, and their families and friends, and share tools they've used to overcome these challenges.

LUNCH WITH LISA

10

AVG. NO. OF
PARENTS IN
ATTENDANCE/WEEK



LUNCH WITH LISA is an opportunity for parents of LGBTQ+ children to gather to share sorrows & successes. Parents bring their own lunches and meet together to eat and to talk.

BECOMING

BECOMING is an ongoing program to strengthen understanding and dialogue between gender variant persons and their family members, allies, and community.

95%

GUESTS SAY THEIR
UNDERSTANDING OF
TOPICS INCREASED

97%

GUESTS FEEL SAFE TO
ASK QUESTIONS



40%

TRAVEL FROM OUTSIDE
OF UTAH COUNTY



LOVE LOUDER ART SERIES

We enrich the lives of participants by allowing them to explore the creative arts and experience a variety of cultural events in order to enhance their personal expression and experiences.

MOST WELL-ATTENDED PROGRAMS

BEYOND

A night of music in which all members of the community are welcome to come sing, play/bring instruments, laugh, and jam together. It is intentionally unstructured, giving an informal and casual feel for families and LGBTQ+ youth to connect through music, a way that speaks to so many people when it might be difficult to find words in a different way.

35

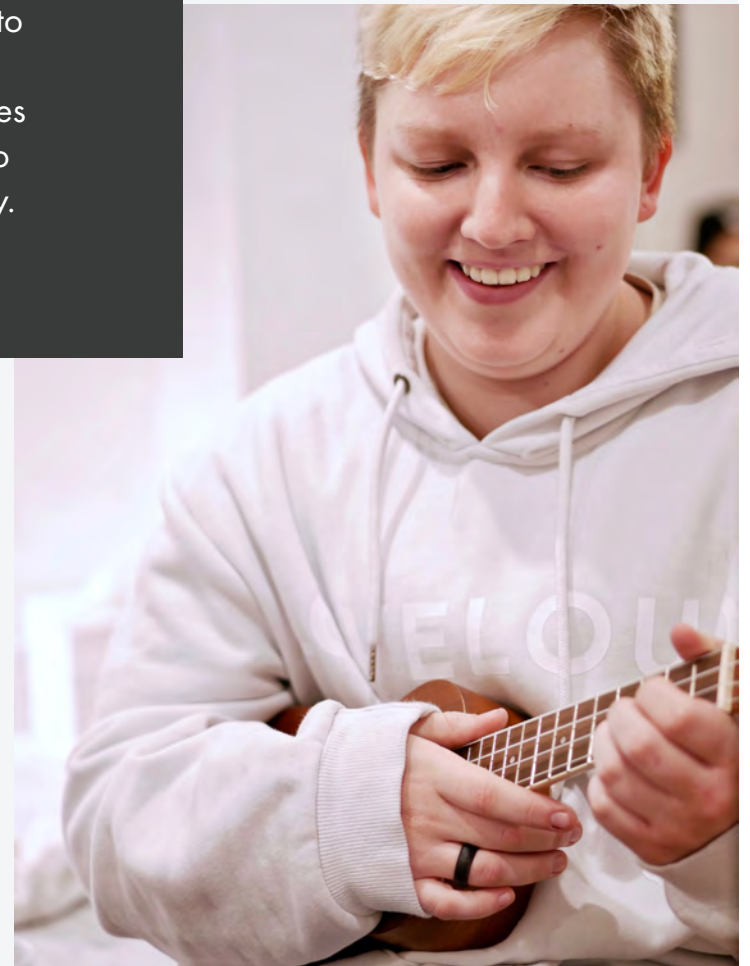
AVERAGE
ATTENDANCE / WEEK

20%

FIRST TIME ATTENDEES
/ WEEK

20%

ATTENDEES WHO'VE
ATTENDED 21+ TIMES





BLUE SKY

Writing has the ability to foster creativity, preserve memories, and establish connection in an extremely powerful way. It allows our LGBTQ+ youth to find validation within themselves and for each other.

60%

ATTENDEES IDENTIFY AS GENDER
DIVERSE/GENDERFLUID/ETC

50

AVERAGE ATTENDANCE
/ MONTH

RAINBOW MUTUAL



Rainbow Mutual is an opportunity for LGBTQIA+ youth, siblings, and allies to come together for a fun monthly event ranging from game nights to petting zoos to talent shows.

FRIENDSHIP CIRCLES

Friendship Circles are a safe and confidential space for individuals to come together and share similar life experiences. We currently offer 11 FC's per week, all specifically designed for various demographics.

60%

ATTENDEES FEEL THEIR
FAMILIES AREN'T
SUPPORTIVE

96%

ATTENDEES REPORT FEELING
CONNECTED AND SUPPORTED BY THEIR
GROUP MEMBERS AND GROUP LEADERS





MILESTONES

GRAND OPENING

FEBRUARY 14, 2017





HRC AWARD

JUNE 24, 2017

LOVELOUD FESTIVAL

AUGUST 27, 2017



20,000

IN ATTENDANCE



IGNITE SUMMIT

DECEMBER 2017

400

YOUTH

200

VOLUNTEERS



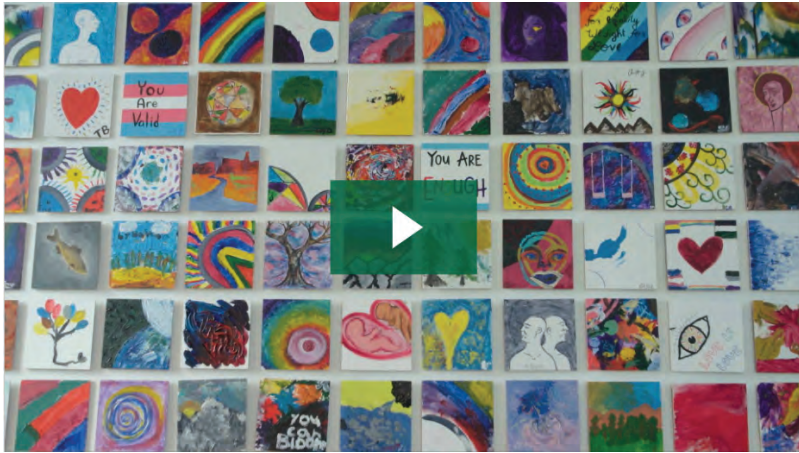
IN THE NEWS



MEET THE MORMON MOM WHO OPENED A RESOURCE CENTER FOR LGBTQ YOUTH

Stephenie Larsen, a Mormon mother of six from Orem, Utah, says she used to think that “being gay was a sin.” Now she joins Megyn Kelly TODAY to talk about why she opened a resource center for LGBTQ youth in Provo. “The No. 1 thing Christ wants us to do is love others,” she explains.

DECEMBER 18, 2017



UPSTANDERS: LOVE FOR ALL IN UTAH

The center, called Encircle, was coming to life in a majestic, two-story, blue-and-white Stick-style house a block away from a large, new Mormon temple. And it was buzzing with activity.

OCTOBER 19, 2017



TM



OUTFRONT: FORMER MORMON OPENS CENTER FOR LGBTQ TEENS, FAMILIES

They called it Encircle LGBTQ+ Family and Youth Resource Center. “No sides, only love,” is its theme.

FEBRUARY 23, 2017



WHY THIS MORMON MOM OPENED AN LGBTQ HOUSE A BLOCK AWAY FROM A CHURCH TEMPLE

“I hope that we can make it easier for gay kids to thrive in America,” says Stephenie Larsen.

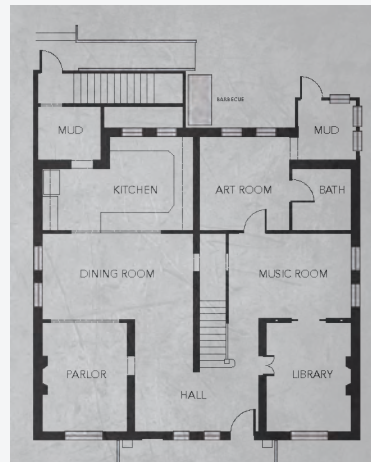
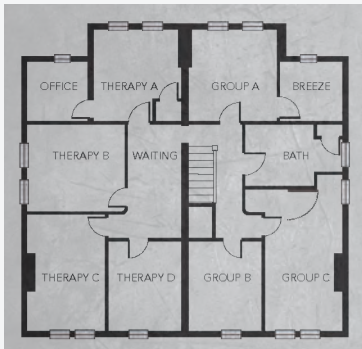
OCTOBER 18, 2017

HUFFPOST



GOALS FOR 2019

JOHN WILLIAMS ENCIRCLE



John Williams Encircle in Salt Lake City will open on Valentine's Day.

The house is named in honor of John Williams - a benefactor of Encircle who passed away May 2016.

ENCIRCLE ST. GEORGE

Encircle St. George has plans to open in 2019 with no official opening date available at this time.





DIGITAL OUTREACH

Encircle is larger than Utah. Encircle is needed in states across the nation. In 2019, we'll be working to bring some of the Encircle experience and original content to those who may not have an Encircle home nearby that they can visit.

ENCIRCLE LIBRARY

We plan to continue to grow our library of resources for youth, families, and the community. Upcoming resources include a new Parent's Book, a "What About Gender" pamphlet, and a publication inspired by LGBTQ+ youth stories and writings from our BLUE SKY program.





Barb Young
Board Co-Chair



Will Spendlove
Board Co-Chair



Holly Alden
Board Member



Nina Brostrom
Board Secretary



Stephenie Larsen
Founder

OUR BOARD

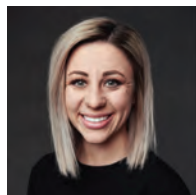
OUR TEAM



Stephenie Larsen
Chief Executive Officer



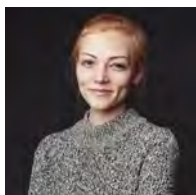
Jacob Dunford
Chief Operating Officer



Jordan Sgro
Chief Program Officer



Landon Creer
Chief Financial Officer



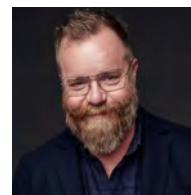
Ingrid Rawle
Chief of Staff



David Eccles Hardy
Development Director



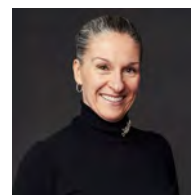
Lisa Hansen
PhD LFMT
Clinical Director



Paul Tew
Marketing Consultant



Jasmine Fullmer
Provo Program Manager



Traci Clarida
Volunteer Coordinator

FINANCIALS

	2017	2016
Beginning Net Assets	199,648.00	-
Total Revenue	560,529.00	228,250.00
Monthly Donations	60,966.00	
Special Events / Fundraisers	101,653.00	
Grants	67,963.07	
General Donations	329,946.93	
Total Expenses	397,577.00	29,639.00
Program	319,755.00	
Management & General	34,993.00	
Fundraising	42,829.00	
Change in Net Assets	177,703.00	199,648.00
Ending Net Assets	377,351.00	199,648.00

DONATIONS

11%

MONTHLY DONORS

13%

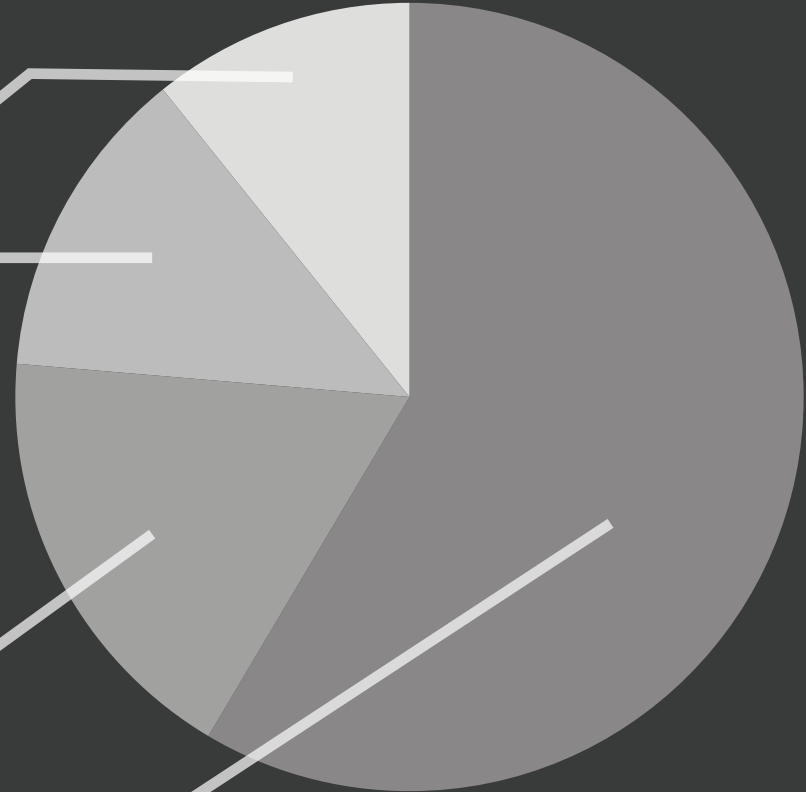
CORPORATE / FOUNDATION GRANTS

18%

SPECIAL EVENTS

58%

GENERAL DONATIONS



EXPENSES

8.8%

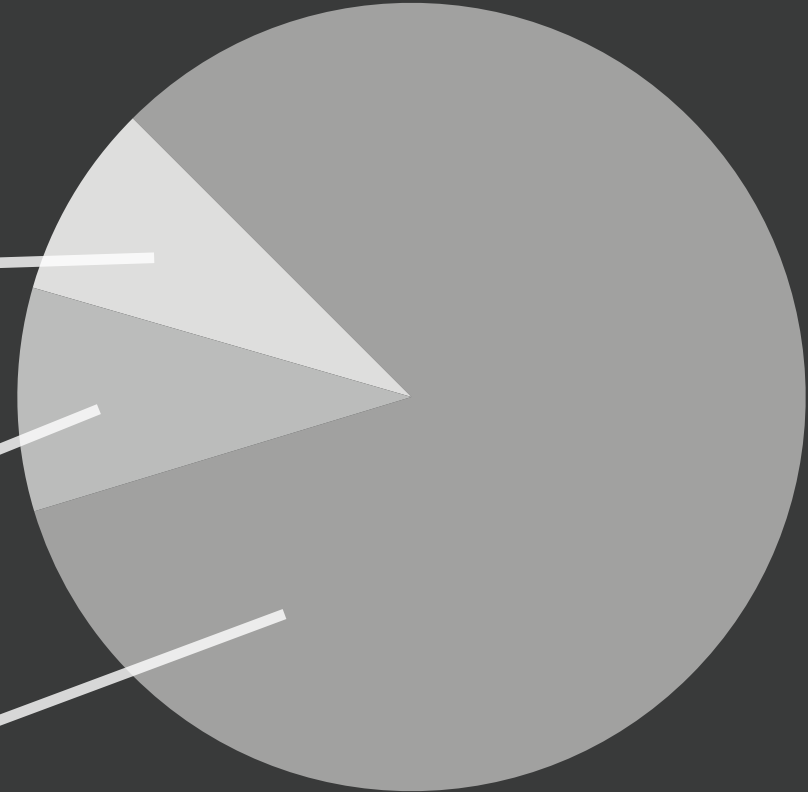
MANAGEMENT & GENERAL

10.8%

FUNDRAISING

80.4%

PROGRAMS



NO SIDES
ONLY
LO
VE

CONTACT

info@encircletogether.org

LOCATIONS

PROVO

91 W 200 S
Provo, UT 84601

JOHN WILLIAMS ENCIRCLE

331 S 600 E
Salt Lake City, UT 84102