



2020 Annual Report
No Sides, Only Love

CONTENTS

I MESSAGE FROM THE CEO
5 2020 AT A GLANCE
II PROGRAMS OFFERED IN 2020
17 NATIONAL EXPANSION
25 NEW PROGRAMMING LINEUP
30 OUR IMPACT
31 OUR PARTNERS
33 OUR TEAM
35 OUR BOARD
37 FINANCIAL SUMMARY



Our Mission

*To Bring the Family and Community Together
to Enable LGBTQ+ Youth to Thrive*

Message from the CEO

Dear Friends, Donors, Volunteers and Community Leaders:

Wow, what a year it has been, one full of countless emotions that I find difficult to articulate. COVID-19 has affected the entire world in various unexpected, frightening and painful ways. This global pandemic was difficult for everyone, especially those who already felt isolated and alone, which includes our LGBTQ+ youth. On behalf of the entire Encircle family, I want to express our love and support to those who have experienced loss of any kind due to COVID-19. Despite the many challenges that Encircle faced, our team came together, worked tirelessly and were able to finish 2020 on a positive note. Our mission was always at the forefront of our minds and hearts; bringing together families and communities to enable our LGBTQ+ youth to thrive. Things may have looked different, but because of the astounding support by the community we were able to fulfill that mission.

When the entire world was forced to shut down, our programming team quickly revamped all of the in person services we offered, making them accessible online. We hosted virtual friendship circles, parent support groups and most importantly, continued to serve youth by moving our life saving therapy sessions online. The pandemic made it clear that the services we offer are especially critical in rural areas where youth cannot visit Encircle homes in person. We have learned that offering online services, especially therapy, to LGBTQ+ youth is a very important component of Encircle's mission.

Encircle will continue to offer these services online to those living in a space or location that make it difficult or impossible to feel connected and loved.

The Encircle St.George renovation was completed in April 2020 but, due to the pandemic the doors remained closed to in person gatherings. In October we held a very small ribbon cutting where over 300 people gathered, socially distanced, wearing masks, to show love and support for the LGBTQ+ youth in Southern Utah. At the Grand Opening Jared Turner, who had purchased the naming rights, dedicated the home to his parents Kim and Terry, making it The Kim and Terry Turner Encircle Home.

Our future looks big and bright. In December we reorganized the Encircle Board of Directors, welcoming a powerful group of community leaders who are committed to creating a more loving and inclusive place for all LGBTQ+ people. We also launched an online campaign in December raising just over \$350,000.00, making it possible for us to bring our life saving services to the Wasatch Back. We continue to work extremely hard on expansion and are focusing heavily on providing the best mental health therapy for LGBTQ+ youth and their families. Thanks to the combined donations from Ryan and Ashley Smith, Apple Inc., along with Dan Reynolds and his wife Aja Volkman donating his childhood home, located in Las Vegas, Encircle kicked off our "\$8 Million Dollars, 8 New Encircle Homes" campaign. This campaign will make it possible for Encircle to expand outside of Utah, into Nevada, Idaho and Arizona. We are committed to making the world a more loving, accepting and safer place for LGBTQ+ youth and will utilize these donations to ensure this happens in every way possible.

It takes a community and I am continually moved by the people who show up for these kids. My sincere thank you to everyone who has supported us during one of the most challenging times we have faced. Thank you to all of our donors and volunteers, every dollar matters and every minute you serve makes a difference. "Buckle-Up" is our new internal mantra, it's going to be an exciting ride. We are committed to serving the LGBTQ+ youth and their families along with educating the community, bringing joy, hope and love, something we are all deserving of.

Much Love,



Stephenie Larsen
FOUNDER & CEO, ENCIRCLE
SHE/HER

Our LGBTQ+ Youth Remain At Risk.

-
- 40% OF LGBTQ+ YOUTH have seriously considered attempting suicide in the past 12 months.
 - 1 IN 3 LGBTQ+ YOUTH reported that they had been physically threatened or harmed in their lifetime due to their LGBTQ+ identity.
 - MORE THAN HALF OF TRANSGENDER YOUTH have seriously considered suicide.
 - According to the Utah Suicide Prevention Plan, 2017-2021, “gay and transgender teens who are highly rejected by their parents and communities are MORE THAN EIGHT TIMES AS LIKELY TO ATTEMPT SUICIDE.”
 - 86% OF LGBTQ+ YOUTH said that recent politics have negatively impacted their well-being.
 - 46% OF LGBTQ+ youth report they wanted psychological or emotional counseling from a mental health professional but were unable to receive it in the past 12 months.
-

2020 At A Glance

60,000

Individuals Served

2,312

Therapy Sessions

\$2,378,120

Total Amount Raised

4

Encircle Homes

Motivated by an increasing number of sexual and gender minority youth experiencing alienation from their families and communities, including high rates of suicide, Encircle began building homes in conservative communities across Utah in 2017 to provide life-saving and affirming programming to LGBTQ+ youth and their families. Encircle utilizes a neutral approach: No Sides, Only Love. This focus is emblematic of Encircle's mission—bringing families and communities together to enable LGBTQ+ youth to thrive.



The Year Encircle Moved Online

MOVING ONLINE

On March 12, 2020, Encircle closed the Provo and Salt Lake City Homes, moving services online due to the global pandemic. Encircle immediately organized online services to reach our communities. Since March 16, 2020 Encircle’s services have included 12 online Friendship Circles per week, including groups like the Queer Black, Indigenous, and People of Color (QBIPOC) Friendship Circle for adults (18+) and Connect, a program for the parents and allied loved ones of LGBTQ+ people. Our online services have seen participants from across Utah, the United States, Brazil, and Mexico. Over 20 volunteers from our Provo, Salt Lake City, and St. George Encircle communities have come together to facilitate these online services and ensure our LGBTQ+ youth, young adults, and their families feel supported, loved, and encouraged during this trying, isolating time. Although the Encircle Homes re-opened for in-person services in October 2020, Encircle’s volunteers still remain committed today to providing online services for those who may still not be able to come back to an Encircle Home.

REOPENING

On October 19, 2020, Encircle reopened the Provo and Salt Lake City Homes. Additionally, Encircle opened the St. George Home’s doors to the public for the very first time. All Homes resumed Encircle’s in-person services—Drop-In Hours, Friendship Circles, and daily activities were implemented alongside measures to protect Encircle’s guests and to prevent the spread of COVID-19. Since October 2020, Encircle has required masking, social distancing, and temperature checks upon entry for every guest. Guests have the choice to voluntarily opt-in to participate in contact tracing, just in case there should ever be a COVID-19 exposure at the Homes. Sanitization procedures have been updated and made more frequent to align with the CDC’s guidelines, and signage has been posted in all Homes to provide guests with information to prevent the spread of COVID-19. Since reopening, all Homes have been able to operate without having to close due to COVID-19 exposure, thus serving those LGBTQ+ youth and young adults acutely needing connection and belonging during the pandemic.

ENCIRCLE TELETHERAPY

In March, Encircle adapted to provide teletherapy to protect patient health during the global pandemic. Teletherapy has proven to be critical for the LGBTQ+ youth. Encircle has been able to continue providing this vital service, while keeping patients and therapists safe. People with many different circumstances such as lack of transportation, location in rural areas, and work schedule have been able to attend therapy sessions that would not have otherwise been possible. Moreover, we've been able to hire therapists with expertise that may not be local to an Encircle home. We will continue to offer teletherapy due to the overall success and outreach we have experienced.

1,800

TELE-THERAPY SESSIONS

2,250

TOTAL THERAPY SESSIONS



Programs Offered During 2020

ELEVATE

A speaking series in which Encircle invites diverse, thriving, inspirational LGBTQ+ individuals with diverse backgrounds and life journeys from the community to come and share their story.

95% OF GUESTS REPORT BEING ABLE TO
CONNECT TO SPEAKER'S STORY

TOOLS TO THRIVE

Designed for LGBTQ+ college students, Tools to Thrive is a discussion-based program meant to facilitate growth and discovery in an intimate setting where community members can talk openly about the challenges faced by LGBTQ+ people and their families and friends and share tools they've used to overcome these challenges.

60 OUTSIDE FACILITATORS, EXPERTS, & PANELISTS BROUGHT
IN TO EDUCATE OUR GUESTS ACROSS BOTH LOCATIONS

SERVE

Our most popular family and ally program, Serve is a service-based program designed to foster connection between LGBTQ+ youth, their families, and the community at large.

60 ORGANIZATIONS ENCIRCLE HAVE
WORKED WITH ACROSS BOTH LOCATIONS





CONNECT

Connect is a program for parents and loved ones of LGBTQ+ individuals in which parents & loved ones are invited to listen to guest speakers, engage in discussions, participate in a book group, and participate in a variety group activities. All aspects of the program are geared toward parents & loved ones as they navigate their child's/loved one's coming out process and beyond.

15 AVERAGE NUMBER OF GUESTS
PER WEEK ACROSS BOTH LOCATIONS

95% OF GUESTS REPORT LEARNING
SOMETHING NEW EACH WEEK

96% OF GUESTS REPORT FEELING HOPE REGARDING THEIR
LGBTQ+ LOVED ONE AFTER PARTICIPATING IN CONNECT

LUNCH WITH LISA

Lunch with Lisa is an opportunity for parents of LGBTQ+ children to gather to share sorrows, strengths, and successes. Parents bring their own lunches and meet together to eat, talk, and process experiences relevant to being a parent of an LGBTQ+ child.

10 AVERAGE NUMBER OF GUESTS IN
ATTENDANCE PER WEEK PER LOCATION

85% OF GUESTS IN ATTENDANCE HAVE
TRANSGENDER/GENDER DIVERSE CHILDREN

LOVE LOUDER ART

This program is hosted by local artists and masters of their craft and provides new skills and coping strategies, promoting creative and artistic expression.

45% OF GUESTS TRAVEL FROM OUTSIDE
UTAH AND SALT LAKE COUNTIES

98% OF GUESTS REPORT ENGAGING IN A
POSITIVE EMOTIONAL EXPERIENCE



BEYOND: A NIGHT OF MUSIC

A night of music in which all members of the community are welcome to come sing, play/bring instruments, laugh, jam, & connect together.

30 AVERAGE GUESTS IN ATTENDANCE
PER WEEK PER LOCATION

96% OF GUESTS REPORT FEELING CONNECTED TO
EACH OTHER THROUGH MUSIC

BLUE SKY

Facilitated by writing professionals, this program provides a safe space for participants to find their voice through writing.

96% REPORT HAVING ENGAGED IN A POSITIVE
AND FULFILLING CREATIVE WRITING EXPERIENCE

15 AVERAGE NUMBER OF GUESTS IN ATTENDANCE
PER WEEK PER LOCATION

BECOMING

An ongoing program to strengthen understanding and dialogue between gender diverse persons and their family members, allies, and community.

95% OF GUESTS FEEL SAFE TO ASK HARD
QUESTIONS RELATIVE TO WEEKLY CONTENT

96% OF GUESTS IDENTIFY WITH THE
TOPICS DISCUSSED AT BECOMING

RAINBOW MUTUAL

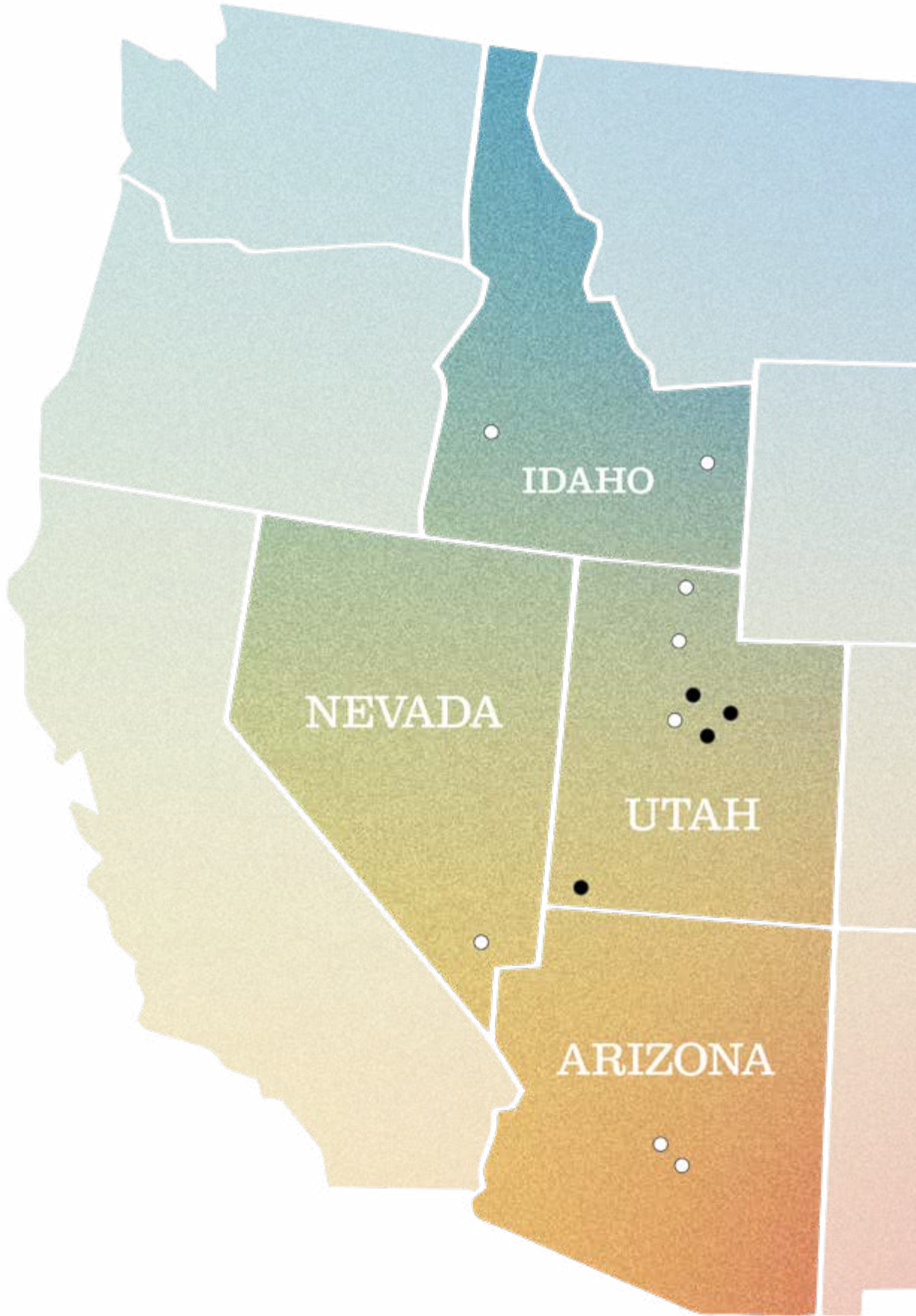
An opportunity for LGBTQ+ youth, siblings, and allies to come together for a fun monthly event ranging from game nights to petting zoos to talent shows.

50 AVERAGE NUMBER OF GUESTS
IN ATTENDANCE PER PROGRAM

National Expansion

Encircle, whose motto is "no sides, only love," was created with the goal of bringing together families and communities, to enable LGBTQ+ youth to thrive. To further that vision and reach even more people, today Encircle is launching a new "\$8 Million, 8 Houses" capital campaign, which will establish eight new Encircle homes in four states: Arizona, Idaho, Nevada, and Utah. Encircle already has three Utah homes in Provo, Salt Lake City and St. George, and a fourth under construction in Heber.

To jumpstart the campaign, Qualtrics founder and Utah Jazz owners Ryan and Ashley Smith will contribute \$2 million, and Imagine Dragons' lead singer Dan Reynolds and his wife, recording artist Aja Volkman will donate Dan's childhood home--valued at \$1 million--in Las Vegas. In addition, Apple will donate \$1 million and contribute products that promote digital connection, creativity and education. Apple CEO Tim Cook, Ryan and Ashley Smith, and Dan Reynolds and Aja Volkman will also serve as honorary co-chairs of Encircle's new campaign, supporting the non-profit's expanding efforts to build community, acceptance and understanding for young LGBTQ+ people and their families.





"All LGBTQ+ people should feel safe and supported enough to be open about who they are with their community and themselves," said Cook, who has visited the organization's Provo house. "Encircle is helping to bridge divides and bring people together — sending a powerful message that the greatest thing you can aspire to become is who you truly are. It's my hope that every young person who feels alone or unsupported can find connection and community at this incredible organization."

"Ashley and I have seen the amazing work Encircle does to benefit LGBTQ+ youth. We're grateful for the opportunity to contribute to their mission of creating more inclusive communities and providing much needed hope and support to youth," said Ryan Smith. "Encircle is an incredible example of the entrepreneurial spirit and drive that motivates people to create a better, more accepting world. Working with Tim Cook, Apple and Dan and Aja on the '\$8 Million, 8 Houses' campaign to improve the experience of LGBTQ+ youth is just the beginning. Encircle's innovative and loving approach is a model that can and should be adopted globally."

"We are extremely grateful that these global leaders see the vision of the profound work we are doing for LGBTQ+ youth and families throughout our communities," said Stephenie Larsen, CEO & Founder of Encircle. "Studies repeatedly have shown that LGBTQ+ youth across the country struggle with depression and suicidality far more than their heterosexual peers, and the pandemic has made that sense of isolation so many feel harder than ever before. We strive to give these kids a positive and loving environment that builds support within their communities where they can realize their full potential, and it works - we have not lost a single youth to suicide. This incredible support makes our nationwide expansion possible and will improve countless LGBTQ+ lives - reminding them that they are perfect, just as they are."




"Encircle is about bringing young LGBTQ+ people and their families together, by including the community and strengthening the bonds that connect us," said Dan Reynolds and Aja Volkman.

"Being a part of this organization means so much to both of us — and we know the house Dan grew up in will be a loving and supportive home to every young LGBTQ+ person who crosses the threshold."



"Encircle is a visionary organization. We cannot overstate the impact they are having on the lives of young people who struggle daily with acceptance and inclusion," said Utah Governor Spencer Cox. "We are grateful for the impact Encircle has had in our communities and are excited to see their leadership and vision expanding nationwide. The commitment Tim, Ryan and Ashley, and Dan and Aja have shown to the LGBTQ+ community by supporting this cause is inspiring. I will do everything in my power to share that same sense of love and commitment with LGBTQ+ youth everywhere."



A photograph of two men sitting on a bench in a room. The man on the left is wearing a light blue short-sleeved button-down shirt and blue jeans, with a tattoo on his left arm. The man on the right is wearing a dark blue short-sleeved button-down shirt and khaki pants. They are facing each other and appear to be in conversation. The background wall is covered with a grid of many small, framed black and white portraits of various people. A white door with glass panes is visible behind the man on the right.

To ENCIRCLE someone is to provide a shelter, a protection, a sense of belonging and ultimately a safe place to learn and grow. Encircle's programs are designed to foster connection, the greatest protective factor for the prevention of mental illness and suicide.

WE ARE MEETING OUR OBJECTIVES *over 92% of the time.*
50 GUESTS VISIT EACH ENCIRCLE HOME *every day.*
850 GUESTS VISIT EACH ENCIRCLE HOME *every month.*
10,200 GUESTS VISIT EACH ENCIRCLE HOME *every year.*

New Online Programming Lineup

Based on participant feedback, participation statistics, and the impact of the COVID-19 global pandemic on daily operations, Encircle recently restructured and reimagined its suite of life-affirming programming to include the following hybrid schedule of in-person and online offerings. This restructuring provides flexibility as the COVID-19 situation develops and offers multiple options for the communities we serve:

ENCIRCLE IN-PERSON THEMATIC MONTHLY ACTIVATIONS

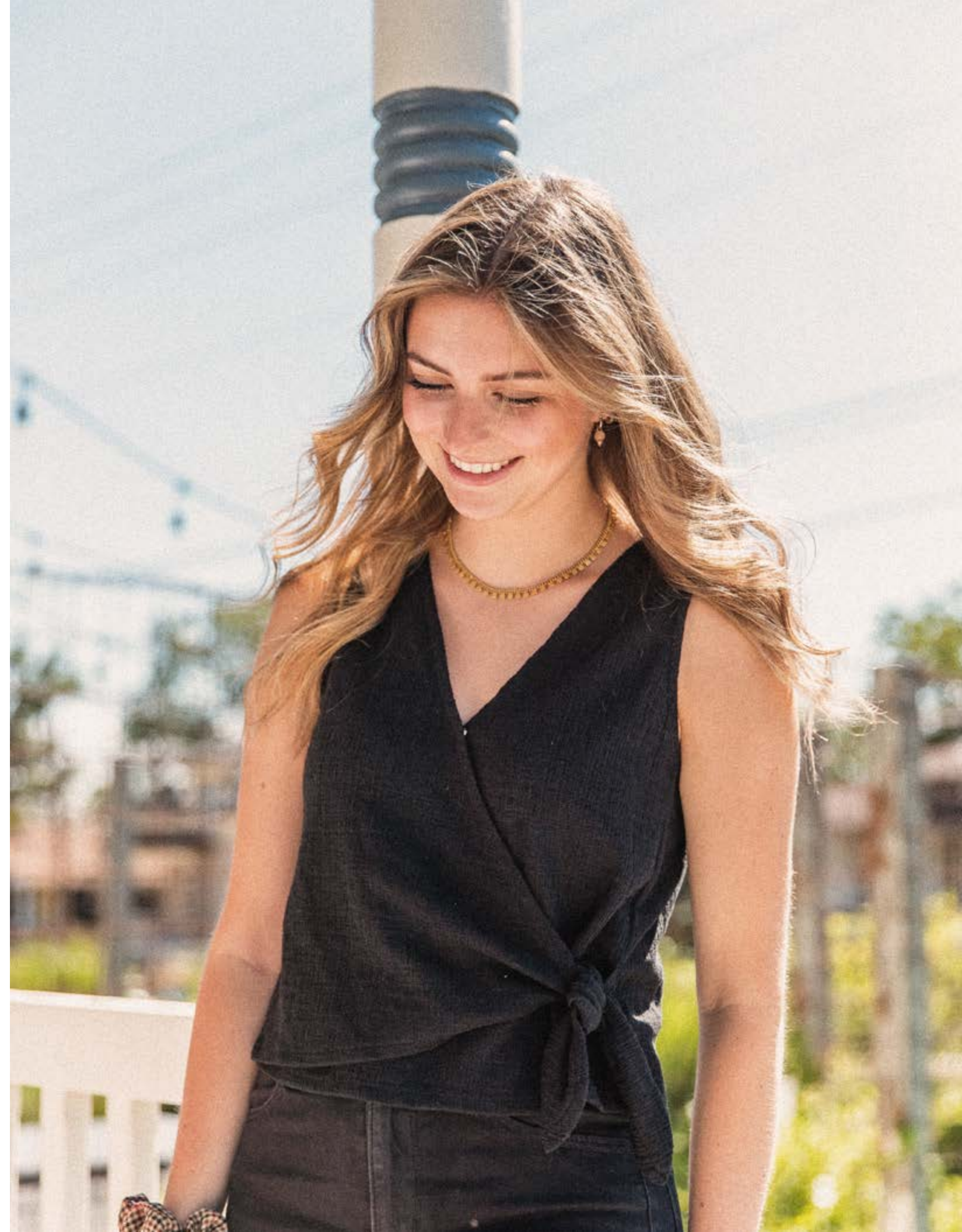
A community outreach initiative focused on engaging LGBTQ+ youth around monthly themed events to help create connection, support, and a sense of belonging for youth during Covid-19. Each month on a designated date, LGBTQ+ youth are invited to come in-person to the Encircle homes to pick up care-packages carefully curated around monthly themes including “Back To School,” “Self-Care,” “Treat Yourself,” “Thankful For You,” and “Year-End Reflection.” Our first activation was held on August 28th and served 425 LGBTQ+ youth across all homes.

LUNCH WITH LISA

A weekly Wednesday opportunity for parents of LGBTQ+ children to share sorrows, regrets, loss, strengths, and successes over lunch. Lunch with Lisa will be held in-person in Provo beginning in September 2020 and also online for individuals preferring to participate via ZOOM.

CONNECT

A Tuesday evening speaker program held over ZOOM for parents and loved ones of LGBTQ+ youth to provide support to each other as they navigate their child’s coming out process and beyond. Participation in this program has included up to 90 participants at a single session.





GSA NIGHT

Gender and Sexuality Alliance (“GSA”) Night engages youth aged 12-18 from GSA and Queer-Straight Alliance (“QSA”) clubs across Utah for a Wednesday evening program designed to foster connection and community among diverse student populations across the state. Participants in the program will come together weekly over ZOOM to engage in game nights, discussion groups, and workshops. The youth will take part in selecting the weekly topic and activity to ensure that the chosen activities are age-appropriate and reflect student interest and need.

ENCIRCLE LIVE PODCAST SERIES

Encircle has begun initial planning for a new weekly podcast series to promote a greater understanding of the Utah queer community and LGBTQ+ youth mental health. The podcast will decrease feelings of lost connection and belonging during Covid-19. Each episode will contain targeted, succinct, and affirming information for youth and their families to incorporate into everyday living.

PEER-TO PEER DAILY FRIENDSHIP CIRCLES

Encircle hosts 12 Friendship Circles per week, which now includes a new Queer Black, Indigenous, and People of Color (QBIPOC) Friendship Circle, for adults (18+). Friendship Circles provide opportunities for sharing, connection, self-acceptance, and support through discussion of issues and experiences relevant to each group, often exploring the intersectionality of conservative cultures, religion, mental health, social issues, and loss. The Friendship Circles offer a safe space to help identify healthy, effective coping techniques to mitigate feelings of shame, angst, fear, pain, and loss.

80% of Friendship Circle attendees report attending 21+ times or more

96% of guests report feeling a sense of belonging and connection to other group members and themselves

22 groups hosted weekly across all locations in 2019



Our Impact

Our core objectives are designed to afford LGBTQ+ youth, their families, and their communities the most critical components of a healthy emotional and mental life. These are:

1. AUTHENTICITY

Humans thrive when they are working toward self-designed, meaningful goals.

2. SOCIAL CONNECTION

Healthy social connections are consistently and positively associated with all indicators of psychological well-being.

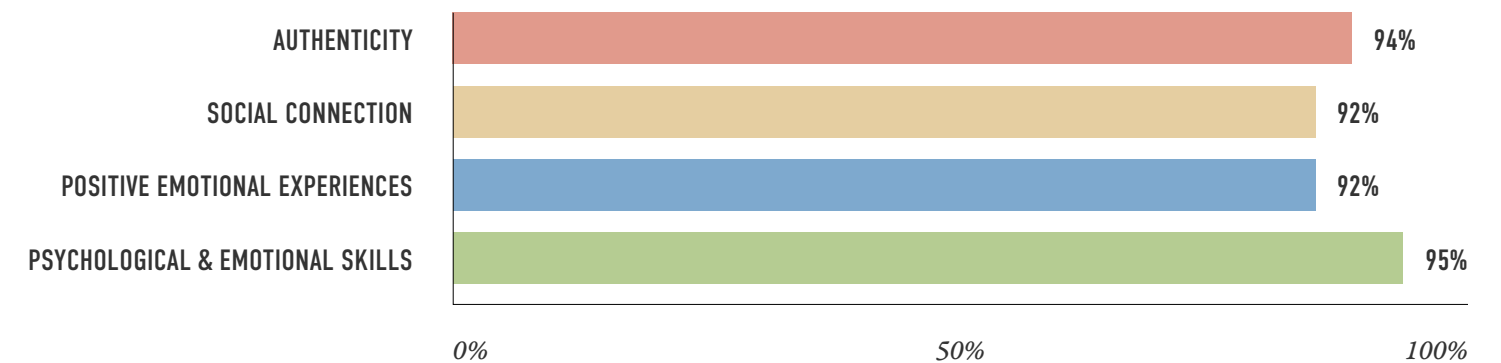
3. POSITIVE EMOTIONAL EXPERIENCES

People who have positive emotions in their everyday lives tend to be happier and healthier, learn better, and get along well with others.

4. PSYCHOLOGICAL & EMOTIONAL SKILLS

Skills like sharing emotions, countering negative thought patterns, and mindful acceptance of emotion all contribute to greater mental health and increased well-being.

RESPONDENTS WHO AGREE OR STRONGLY AGREE THAT ENCIRCLE PROGRAMS ACCOMPLISH CORE OBJECTIVES



Our Partners

Apple Inc.	BNY Mellon Charitable Gift Fund	Grand Lodge Charity Foundation	The LGBTQ Community Endowment Fund at the UCF	Jive Communications	WarnerMedia
LOVELOUD Foundation	David Kelby Johnson Memorial Foundation	Hansen Sisters Foundation	American Express Company	Kacey Foundation	Templin Family Brewing
Marriott Daughters Foundation	The Drake Bettner Foundation	Intermountain Community Care Foundation Community Giving	Ebay	L3 Technologies	Washington Country Board of Realtors
Aetna	TisBest Philanthropy	Lexus Pursuit of Potential	Equitable	Masonic Foundation of Utah	Target Corporation
B.W. Bastian Foundation	Walmart Giving	Liahona Academy for Youth	Merrill Lynch	Nature Conservancy	United Way of Central and Southern
Diane Warnock Family Charitable Fund	Lawrence & Janet Dee Foundation	Marathon Pétrole Corporation	Utah Valley Hospital	Planned Parenthood Association of Utah	ChargeItPro Inc
Miller Family Philanthropy	Gatehouse no. 1	Pluralsight	Bungie Foundation	The Collin Lewis Charitable Fund	Beans and Brews
The WayOUT LGBTQ Foundation	United West Title Insurance Agency	Preston Grant Estate	Nice and Easy Bartending Company	The Education Architect, LLC.	Dayton Foundation
The Kahlert Foundation	Senzee Family Fund	Sentry Financial Corporation	Colin Lewis Campbell Charitable Fund	The Susan A. And Donald P. Babson Charitable Foundation	GLAAD Inc.
Utah County CARES Nonprofit Grant Program	Discover	The Discover Brighter Futures Fund	Qualtrics	The Utah Bears Inc	Utah Pride Center
Dominion Energy Charitable Foundation	Kulynych Family Foundation II	The Emergent Fund (Amalgamated Foundation)	Underbelly Creative	Vivint Gives Back	Epic Brewing Company
Nuskin	The John C. Kish Foundation	The Jeffrey & Helen Cardon Foundation	Twitter	United Way of Salt Lake	Tinwell
The Huntsman Foundation	Willard Eccles Foundation	The Will Ascend Foundation	Fortress Investment Group	FIG LLC	Kodiak Cakes
Washington County Utah	Weyerhaeuser Giving Fund	Visa Inc.	Salesforce	Melville Inc	Stewarts Pest Control
Adobe Inc.	E. Rhodes & Leona Carpenter Foundation	Meridian Insurance	Frontstream	Alibi Lounge LLC	Western Region Division of Child and Family Services
Dancing Llama Foundation	Hemingway Foundation	Utah Medical Association Foundation	Geneva Rock Products	Raytheon	Arturus LLC
State of Utah	UPS Foundation	BD	Linderman Family Fund	T-Mobile	Mckinsey
AT&T Foundation	Google	Block Restaurant Group	Northrop Grumman Foundation	Wasatch Mental Health	YourCause, LLC
Intermountain Healthcare (IHC Health Services)	Matthew Driggs Family Limited Partners	Magicspace Entertainment	State Farm Companies Foundation	Snow College	Fresh Wata
The Starbucks Foundation	Vanguard Charitable	Schwab Charitable Fund	The Fox Foundation	LTI Maintenance LLC	Ayco Charitable Foundation
Chevron Salt Lake Refinery	Microsoft	Ancestry	Cambia Health Solutions Fund of The Oregon Community Foundation	Deseret Management Corporation	Expedia
The Sam & Diane Stewart Family Foundation	Goldman, Sachs & Co. LLC.	Select Health	Jerry R. Anderson Construction LLC	Community Foundation of Utah	Salt Lake Goodtime Bowling League
	Gold Key Realty Inc	The John N and Karen B Gardner Charitable Fund	The Beckham Ashe Foundation	David Bohnett Foundation	The Shallenberger Family Foundation
			Estee Lauder Companies	Eva Carlston Academy LLC	Healthequity, Inc.
			Connected 2 Therapy	Making a Difference Foundation	Davis Wright Tremaine LLP
			Corning Incorporated Foundation	Painter Family Foundation	Global Impact
			Deseret Trust Company	Patent Law Works LLP	Holland & Hart LLP
			edXponential, LLC	UJET	Kim Mascherino Giving Fund
			HCA Caring for the Community	Utah Association of School Psychologists	

Our Team



STEPHENIE LARSEN
Founder & CEO
She/Her



JACOB DUNFORD
Chief Operating Officer
He/Him



JAKE BARNEY
Chief Development Officer
He/Him



CAMLYN GIDDENS
Community Engagement Coordinator | Provo |
She/Her



ADAM WHITE
Programs Director
He/Him



LAKSHAN LINGAM
Executive Asst. Operations
They/Them



ERIK JORGENSON
Bookkeeper
He/Him



JORDAN SGRO
Chief Program Officer
She/Her



KENT CAROLLO
Marketing Director
He/Him



BROOKE JORGENSON
Donation Relations Manager
She/Her



MEGAN MERRILL
Member Experience Rep.
She/Her



CHRISTINE MASON
Development Officer
She/Her



RICHARD BINGHAM
Director of Expansion
He/Him



WILLIAM BATES
Chief Legal Officer
He/Him



JARED KLUNDT, PH.D
Clinical Director
He/Him



AMBER MCMILLAN
Chief of Staff
She/Her



CHLOE AGYIN
Home Director | SLC
They/Them



SEAN ALLSOP
Community Gifts Manager
He/Him



MARILYN TAYLOR
Events Coordinator
She/Her



ALISON DAY
People & Culture Coordinator
She/Her



GENEVA SOULIER
Art Curator
She/Her



JULIE BENSON
Home Director | St. George
She/Her



ANNA PRESTON
Asst. Home Director
St. George
She/Her



ANA CHAVARRI
Home Director | Provo
She/Her



MADELEINE ELIASON
Asst. Home Director | Provo
She/Her



GENTRY WHITE
Account Donor Rep.
She/Her



DEVIN PRESTON
Executive Asst. Operations
She/Her



DANNY VAZQUEZ
Graphic Designer
He/Him



HEATHER MANAVEL
Development Officer | Idaho
She/Her

Our Board



CURTIS ANDERSON, ESQ.
HE/HIM



HOLLY ALDEN
SHE/HER



JENN ARMSTRONG-SOLOMON
SHE/HER



BRUCE BASTIAN
HE/HIM



DAVID PARKINSON
HE/HIM



ALLISON PHILLIPS BELNAP
SHE/HER



DAN REYNOLDS
HE/HIM



JARED SANDBERG TURNER
HE/HIM



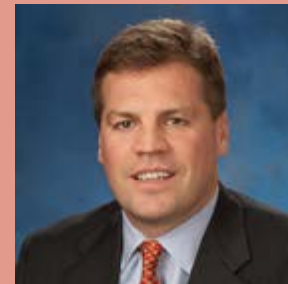
ROB BROUGH
HE/HIM



BRAD CLARK
HE/HIM



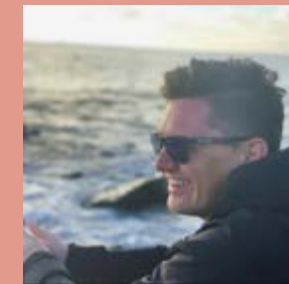
CLINT FORD
HE/HIM



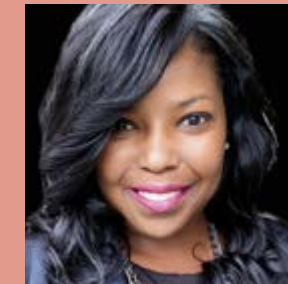
DAVID LANG
HE/HIM



MICHELLE SMITH
SHE/HER



BRIAN SPITTLER
HE/HIM



Y. NIKKI WALKER
SHE/HER



BARB YOUNG
SHE/HER



MIKE LEVINTHAL
HE/HIM



ROGER MCOMBER
HE/HIM



RICO NELSON
HE/HIM



MIKE OSTERMILLER
HE/HIM

Financial Summary

STATEMENT OF FINANCIAL POSITION SUMMARY

YEAR	TOTAL ASSETS	TOTAL LIABILITIES	TOTAL NET ASSETS
2017	\$400,159.00	\$17,375.00	\$382,784.00
2018	\$2,083,411.00	\$161,745.00	\$1,921,666.00
2019	\$2,387,717.00	\$64,235.00	\$2,323,482.00
2020	\$3,273,442.00	\$91,562.00	\$3,181,880.00

STATEMENT OF ACTIVITIES SUMMARY

YEAR	REVENUES	EXPENSES	CHANGE IN NET ASSETS
2017	\$518,114.00	\$325,244.00	\$192,870.00
2018	\$2,274,050.00	\$717,880.00	\$1,556,169.00
2019	\$1,981,496.00	\$1,280,616.00	\$437,558.00
2020	\$2,387,730.00	\$1,509,465.00	\$878,265.00

ALLOCATION OF EXPENSES





ENCIRCLETOGETHER.ORG

Encircle encourages LGBTQ+ youth to practice self-acceptance and express themselves without fear of ridicule, discrimination, bullying, or harassment. Our programs are designed to foster connection, the greatest protective factor for mental illness and suicide.

With your help, we can continue to bring the family and community together to enable LGBTQ+ youth to thrive. Please visit ENCIRCLETOGETHER.ORG/DONATE