



**STAGE 2: CREATING A SHARED VISION  
ACTIVITY BOOK**

# INTRODUCTION

## We need your voice at the upcoming workshops for Stage 2 of the Westside Evolves planning process!

The Planning Team has been hard at work and recently wrapped up Stage 1 of the planning process: Understand The Neighborhood. The first three months focused on understanding the people and geography of the neighborhood. The planning team gathered information on both the past and present of the community via surveys, interviews, observations, and creative conversations.

**Thank you to all who participated in Stage 1 of the planning process!**

## Upcoming Workshops

The upcoming workshops will mark the start of **Stage 2: Create a Shared Vision**. In addition to sharing key findings from all the information gathered in Stage 1, the planning team will lead participants in a series of exercises and conversations to begin to shape a shared vision for the future of the neighborhood. These workshops will include discussions about priorities and preferences for the plan regarding new housing, neighborhood retail and amenities, transportation, public infrastructure, supportive service programs, and more. The shared vision that emerges during Stage 2 will guide the design of a detailed draft plan to come in Stage 3 of the planning process.

Since the Covid-19 pandemic limits our ability to gather together in-person to have these important discussions, we are looking for creative ways to get additional feedback from residents and stakeholders. In addition to joining us for the virtual workshops noted above, this Activity Book is an opportunity for you to participate in designing your neighborhood. The content in this book reflects much of the material to be presented in the workshops and enables you to share your ideas and comments that will help inform decisions for the future of the Westside Community.

## MARCH 2021 ■ Workshop 1 ■ Workshop 2

|       |      |      |      |       |      |      |
|-------|------|------|------|-------|------|------|
| Su    | M 1  | T 2  | W 3  | Th 4  | F 5  | S 6  |
| Su 7  | M 8  | T 9  | W 10 | Th 11 | F 12 | S 13 |
| Su 14 | M 15 | T 16 | W 17 | Th 18 | F 19 | S 20 |
| Su 21 | M 22 | T 23 | W 24 | Th 25 | F 26 | S 27 |



If you have a smart phone, use your camera to scan this QR code to join the workshops directly and for project updates!



# ACTIVITY BOOK CONTENTS

|   |                                   |       |
|---|-----------------------------------|-------|
|   | How to Participate .....          | 4     |
|   | #PictureThisWestside .....        | 4     |
| <b>BUILDINGS, PLACES<br/>&amp; CONNECTIONS</b>  | About You .....                   | 5     |
|   | Community Character Surveys ..... | 6-11  |
|   | Let's Draw .....                  | 12-15 |
| <b>PEOPLE, SERVICES<br/>&amp; OPPORTUNITIES</b> | Programs & Services Part I .....  | 18-19 |
|   | Programs & Services Part II ..... | 20-21 |
|   | Word Search .....                 | 23    |
|   | Checklist* .....                  | 24    |
|   | Comments .....                    | 25    |

**\*NOTE:** Turn in your Activity Book to enter for a chance to win **\$100!** See page 24 for details.

# HOW TO PARTICIPATE

## Westside Community Planning Workshops

The Activity Book is for you to participate in designing your Neighborhood. The Westside Evolves team will use your feedback to inform decisions for the future Westside Community. Please use a black or blue pen to fill out the activity book.

Please choose a time slot below for each topic that's convenient for you.

Follow the website link [www.westsidееvolves.com/updates](http://www.westsidееvolves.com/updates) to connect virtually or call +1 (301) 715-8592 and type in the Meeting ID: 948 2729 6619 to join.

### WORKSHOP 1

**BUILDINGS, PLACES &  
CONNECTIONS**

Saturday, March 6: 10:00-12:00 pm  
Tuesday, March 9: 11:30-1:30 pm  
Thursday, March 11: 12:00-2:00 pm

### WORKSHOP 2

**PEOPLE, SERVICES &  
OPPORTUNITIES**

Monday, March 8: 2:30-4:30 pm  
Saturday, March 13: 10:00-12:00 pm  
Monday, March 15: 4:00-6:00 pm

# #PICTURETHISWESTSIDE

**Text photos of your favorite places or important features!**

### What is your favorite spot in the community?

Grab your camera or cellphone and head outside. Collect your neighbors and friends. Your pictures may be used for public art!

**Get your camera ready for some great shooting.**

Text your pictures to the Westside Connects Text Line at (423) 954-0128 with your name, (first and last) and the name of the spot that you took a picture of.

**Take your mask and have a blast!**

# ABOUT YOU

## Where do you live in the Westside Community?

- I live in College Hill
- I live in Gateway Tower
- I live in another housing development in the Westside
- I do not live in the Westside Community

## How long have you lived in the Westside Neighborhood?

- Less than one year
- 1-5 Years
- 6-10 Years
- 11-20 Years
- More than 20 Years
- I do not live in the Westside Neighborhood



# HOUSING CHARACTER SURVEY

Fill in the circle above your selection.

Can you see the following housing in the Westside Community?



DEFINITELY YES, IN THE RIGHT LOCATION NO OPINION PROBABLY NOT NO



DEFINITELY YES, IN THE RIGHT LOCATION NO OPINION PROBABLY NOT NO



DEFINITELY YES, IN THE RIGHT LOCATION NO OPINION PROBABLY NOT NO



DEFINITELY YES, IN THE RIGHT LOCATION NO OPINION PROBABLY NOT NO

## Highlights from data collected during Stage 1: Understand the Neighborhood

- Great views throughout site
- Front porch culture
- Aging housing and infrastructure
- Need for ADA living units
- Underutilized assets
- Vacant commercial spaces
- Challenging site topography

Can you see the following housing in the Westside Community?



DEFINITELY YES, IN THE RIGHT LOCATION NO OPINION PROBABLY NOT NO



DEFINITELY YES, IN THE RIGHT LOCATION NO OPINION PROBABLY NOT NO



DEFINITELY YES, IN THE RIGHT LOCATION NO OPINION PROBABLY NOT NO

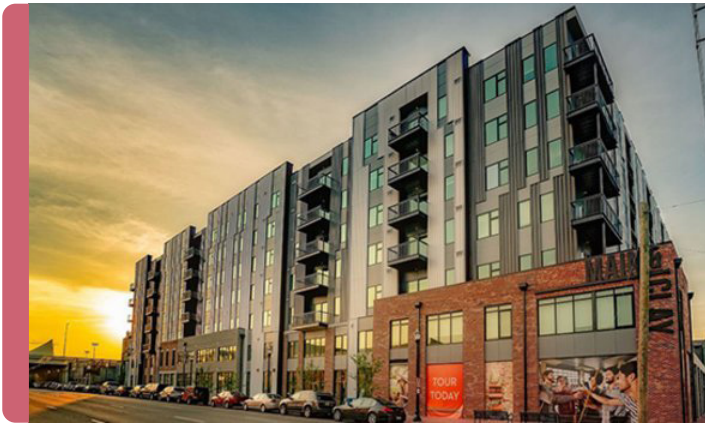


DEFINITELY YES, IN THE RIGHT LOCATION NO OPINION PROBABLY NOT NO

# HOUSING AND STREETScape CHARACTER SURVEY

Fill in the circle above your selection.

Can you see the following housing in the Westside Community?



○ — ○ — ○ — ○ — ○  
DEFINITELY YES, IN THE RIGHT LOCATION NO OPINION PROBABLY NOT NO



○ — ○ — ○ — ○ — ○  
DEFINITELY YES, IN THE RIGHT LOCATION NO OPINION PROBABLY NOT NO



○ — ○ — ○ — ○ — ○  
DEFINITELY YES, IN THE RIGHT LOCATION NO OPINION PROBABLY NOT NO



○ — ○ — ○ — ○ — ○  
DEFINITELY YES, IN THE RIGHT LOCATION NO OPINION PROBABLY NOT NO



## Highlights from data collected during Stage 1: Understand the Neighborhood

- Good connectivity to Riverfront and Downtown
- Nearby transit access but long commute times
- Highway 27 is a barrier to Downtown
- Good sidewalk network but unsafe underpasses
- Limited mobility for people with disabilities

Can you see the following streets/sidewalks in the Westside Community?



DEFINITELY YES, IN THE RIGHT LOCATION NO OPINION PROBABLY NOT NO



DEFINITELY YES, IN THE RIGHT LOCATION NO OPINION PROBABLY NOT NO



DEFINITELY YES, IN THE RIGHT LOCATION NO OPINION PROBABLY NOT NO



DEFINITELY YES, IN THE RIGHT LOCATION NO OPINION PROBABLY NOT NO

# OPEN SPACE CHARACTER SURVEY

Fill in the circle above your selection.

Can you see the following open spaces in the Westside Community?



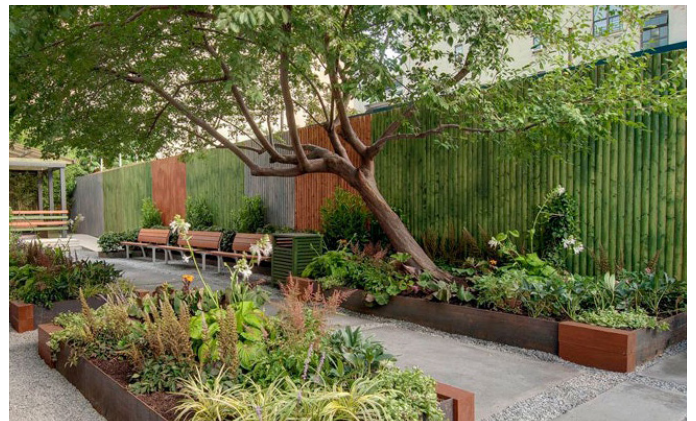
DEFINITELY YES, IN THE RIGHT LOCATION NO OPINION PROBABLY NOT NO



DEFINITELY YES, IN THE RIGHT LOCATION NO OPINION PROBABLY NOT NO



DEFINITELY YES, IN THE RIGHT LOCATION NO OPINION PROBABLY NOT NO



DEFINITELY YES, IN THE RIGHT LOCATION NO OPINION PROBABLY NOT NO

## Highlights from data collected during Stage 1: Understand the Neighborhood

- Largely zoned High Density Residential (R-3)
- Close proximity to Tennessee Riverwalk
- Significant amount of underutilized land
- Vacant commercial spaces within study area
- Few commercial services nearby
- Planned investments around study area

Can you see the following open spaces in the Westside Community?



○ — ○ — ○ — ○ — ○

DEFINITELY    YES, IN THE RIGHT LOCATION    NO OPINION    PROBABLY NOT    NO



○ — ○ — ○ — ○ — ○

DEFINITELY    YES, IN THE RIGHT LOCATION    NO OPINION    PROBABLY NOT    NO



○ — ○ — ○ — ○ — ○

DEFINITELY    YES, IN THE RIGHT LOCATION    NO OPINION    PROBABLY NOT    NO



○ — ○ — ○ — ○ — ○

DEFINITELY    YES, IN THE RIGHT LOCATION    NO OPINION    PROBABLY NOT    NO

# LET'S DRAW

Use your pen or crayons to answer and draw, and have FUN!

1. Where should housing be located in the Westside Community?

(ex: Where would you like to live and why?)

---

---

---

Draw and label housing on the map to the right (see housing examples below).

2. What are the special places within the Westside Community?

(ex: Grace the tree, flag pole, favorite gathering spots...)

---

---

---

Draw and label the special places on the map to the right.

3. What open spaces do you want in the Westside?

(ex: playground, bbq, community garden, ball fields...)

---

---

---

Draw and label your answers on the map to the right.



Townhomes



Midrise Buildings



Highrise Buildings



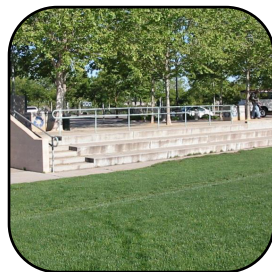
Lowrise Buildings



Community garden



Basketball Court



Playfield



Playground

# LET'S DRAW

## Add notes or drawings to images of the community below!

Write or draw on the images below - what would you like to see preserved, improved or changed in the neighborhood? How do you experience these places today and what would you like them to look and feel in the future? Reference the map and example images on the previous pages as needed.



**GROVE STREET**



**12TH STREET**



**COLLEGE HILL COURTS**



**BOYNTON DRIVE**

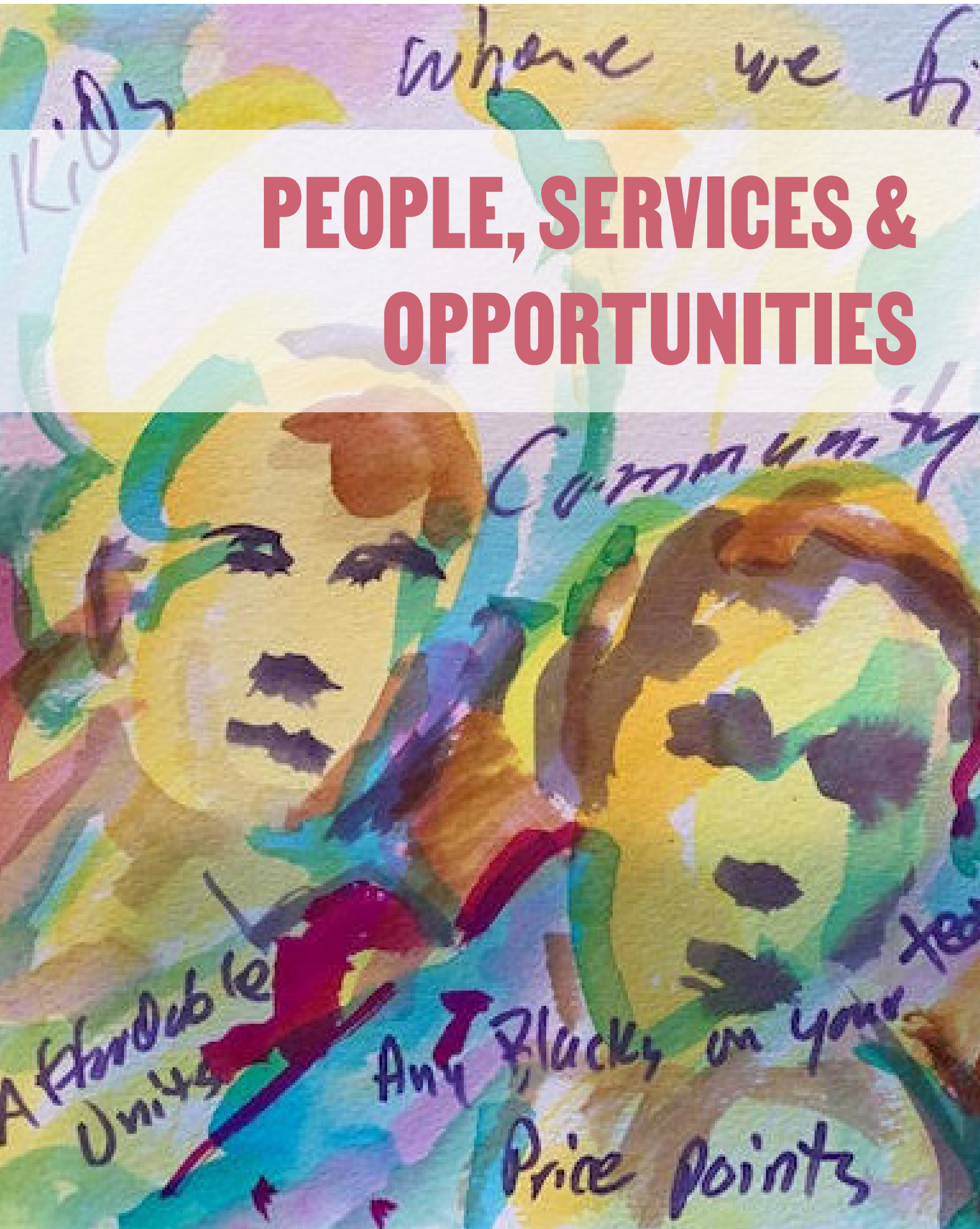


**MLK BOULEVARD**



Original Artwork by Charlie Newton (Artist in Resident)





where we fi

# PEOPLE, SERVICES & OPPORTUNITIES

Community

A Florida  
Unit

Any Blacks on your  
Price points

yes

# PROGRAMS & SERVICES PART I

**RANK YOUR TOP THREE**    1 = Most Important    2 = 2nd Most Important    3 = 3rd Most Important

Based upon this data and what you know about the Westside neighborhood from living, working and/or worshipping there, please help us to determine the most important topics for the Westside Evolves plan to address.

## What are the three (3) most important topics for the plan to address related to HEALTH & WELLNESS?

- Access to medical home/primary care physician
- Access to dental services
- Support managing chronic health issues like hypertension, asthma, diabetes
- Mental health services
- Support for persons with disabilities
- Strategies to address food insecurity
- Strategies to support recreation and physical activity
- Other (please name): \_\_\_\_\_

## What are the three (3) most important topics for the plan to address related to EDUCATION & YOUTH?

- Early Learning Programs and Supports for Caregivers of Young Children
- Strategies to address Chronic Absenteeism
- Academic Supports, such as tutoring
- Out of School Time programming
- Mentoring Programs
- Programs that help Parents/Caregivers to support school-age children
- Access to affordable/reliable internet and devices
- Other (please name) \_\_\_\_\_

## What are the three (3) most important topics for the plan to address related to INCOME & EMPLOYMENT?

- Job Skills/Vocational Training leading to career ladder employment
- Soft Skills Training for chronically un- or under-employed
- Affordable Child Care
- GED/ABE
- Barriers to employment such as Criminal Record, Transportation, etc.
- Job Training/Assistance specifically for persons with disabilities
- Access to affordable/reliable internet and devices
- Financial Literacy, i.e. budgeting, credit repair, banking services
- Other (please name) \_\_\_\_\_

## Highlights from data collected during Stage 1: Understand the Neighborhood:



- College Hill and Gateway Tower residents have access to health insurance at comparable or higher rates than the city, although insurance rates in the Westside as a whole are slightly lower.
- Nearly half of residents report using the hospital emergency room or urgent care most often when they are sick or in need of medical advice.
- The greatest unmet health need is dental services.
- Westside residents report chronic health conditions such as asthma, diabetes, hypertension as well as poor mental health at 2-3 times the rate in Chattanooga.
- Large need for services tailored to persons with a disability including assistance with activities of daily living, mental health services, and accessible transportation and housing.
- The top non-health related need is emergency food assistance and many Westside residents report that the cost and limited availability of fruits and vegetables are barriers to healthy eating.



- Approximately half of the 95 children under age 5 at College Hill participate in a center-based early-learning program, many at the HeadStart program offered by YFD in the neighborhood.
- Westside students are concentrated in 5 schools: Battle Academy, Brown International Academy, Orchard Knob Middle, Howard Connect Academy, and The Howard School.
- Rates of chronic absence and out of school suspensions among Westside students are more than twice the rates in the district and state.
- Approximately 75% fewer Westside students achieved proficiency on standardized tests than their counterparts in the district and state in SY 2018-2019.
- Less than 40% of school age children at College Hill participate in youth programs or other out-of-school-time activities. Covid-19 safety concerns was the number one barrier cited.



- Median household income in the Westside is approximately \$12K per year, which is only 20-25% of the city and state median incomes.
- The employment rate for work-age individuals living in the Westside is approximately half of the city and state rates.
- Nearly 40% of Westside residents who are employed work in service occupations which is more than twice the rate in Chattanooga.
- College Hill residents report multiple barriers to employment, but disability and related issues was the number one challenge identified, impacting 1 in 3 survey respondents.
- More than half of Westside households do not have affordable or reliable access to the internet and computing devices.

# PROGRAMS & SERVICES PART II

**Answer the questions below to the best of your ability.**

An array of supportive services and programs will be needed to address the priorities in Health & Wellness, Education & Youth, and Income & Employment that you identified in the previous exercise. To help the planning team begin to develop strategies in these areas, please share your thoughts on the following questions.

- 1. What programs and services do you value and use in the community, whether located directly in the Westside or nearby?**

---

---

---

---

---

- 2. What are the most critical services you believe are missing/needed in the community?**

---

---

---

---

---



3. What keeps residents from taking advantage of services that are currently available?

---

---

---

---

---

4. Which providers/organizations should be part of the conversation going forward?

---

---

---

---

---



Playground in the Courts. Photograph by Andrew Travis

# WORD SEARCH

Circle the 19 hidden words. They may be found across, down, diagonally, backwards and can overlap.

E D T N C G S V N P G R T H O R G E R  
I T R I G G E R T H E H O R S E E H Y  
S R Z S S O E W F L E Y W E P O H N A  
E F A E G R O V E P O A E I A A N I W  
R E Y L N G O A H A E N R R Y F L A E  
M D R K N R L G Y E C I S A R A Y B T  
A T E S G A O L Y A W E G D I R R C A  
P T S C S C N E L O P G A L F R N A G  
L L C O E E H I R C F I I L S E E M N  
E L E L D Y W A N A I E A S E W H E E  
R I S L A T P E G T O O E R K T A R D  
J H F E L L O W E P H R T D R A S O L  
S N S G B Y P E T G P S Y K G R E N O  
B O M E R A L S O Y J S T M O Z M H G  
I T L H E E A T C E D N W R B P A I R  
O N T I L R R S S O H H A A E L J L O  
Y Y N L L S A I O D T G A T L E N L G  
R O O L O O H D Z P E N D R E N T R O  
E B E T R I N E L E U G N R S R B G N

BOYNTONHILL  
CYPRESS  
GOLDENGATEWAY  
JAMESAHENRY  
POPLAR

TOWERS  
ZAYRES  
CAMERONHILL  
ELKS  
GRACE

MAPLE  
RIDGEWAY  
TRIGGERHORSE  
COLLEGEHILL  
FLAGPOLE

GROVE  
NINTHSTREET  
ROLLERSKATES  
WESTSIDE

# RETURN INSTRUCTIONS

## Return your Activity Book at one of the listed locations for a chance to WIN \$100

We hope you will take the time to complete the Activity Book and the postcard exercise. Please drop them off in Westside Evolves boxes at the following locations:

- At Gateway Tower, Dogwood Manor and Boynton Terrace, a Westside Evolves box will be in the building lobby, if applicable, or at the entry to your building.
- At College Hill Courts, a Westside Evolves box will be located outside the office door at the Grove Street management office.
- At the James A Henry building on Grove Street, a Westside Evolves team member will be present to collect materials or answer questions in-person from 2:00-4:00pm on Tuesday, March 16, Wednesday, March 17 and Thursday, March 18.

Contact info below is optional but required to enter drawing

Name: \_\_\_\_\_

Email: \_\_\_\_\_

Phone: \_\_\_\_\_

## Activity Book Checklist (complete as many as you can, and have FUN!)

- Picture This**
- Housing - Community Character Survey**
- Streetscape - Community Character Survey**
- Open Space - Community Character Survey**
- Let's Draw - Mapping Exercise**
- Rank Your Top 3**
- Questions & Answer**
- Word Search (optional)**





**THANK YOU  
FOR YOUR  
PARTICIPATION**

**EJP**  **PLANNING TEAM**

For more information, please visit [www.westsideevolves.com](http://www.westsideevolves.com)