

nonlinearcircuits

BALTER build & BOM

This module is a dual VC gate delay. Using CV or the panel pot, delay can be set from 7ms to 1 minute; longer times can be obtained by replacing the 1uF caps with larger values, say 10uF.

The output gate signal is on only if the incoming signal is still on. When the incoming gate finishes the output finishes. Technically this module only delays the *start/rising edge* of the incoming gate.

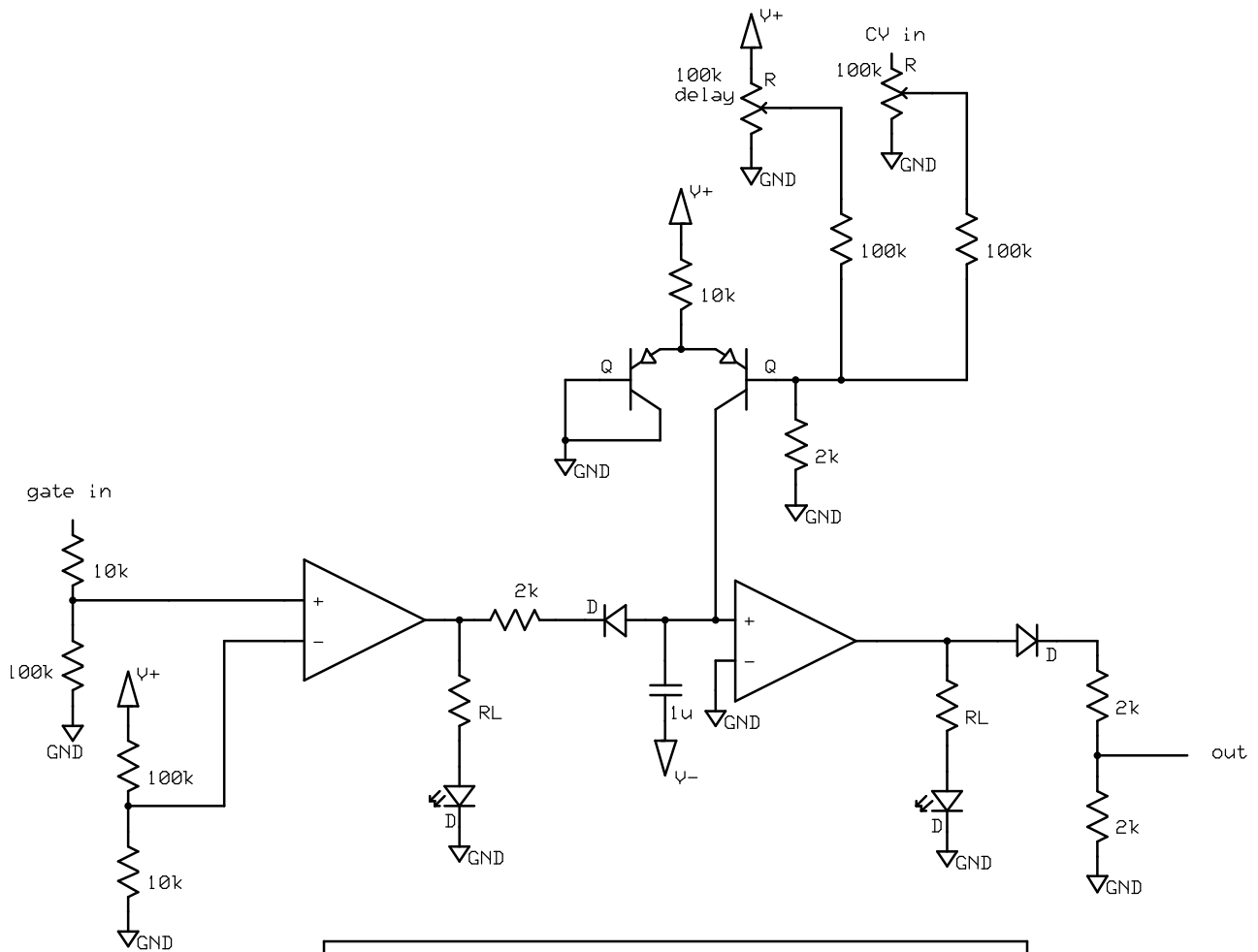


BOM – The Tayda part numbers are given as examples, feel free to buy from your favorite retailer if you prefer.

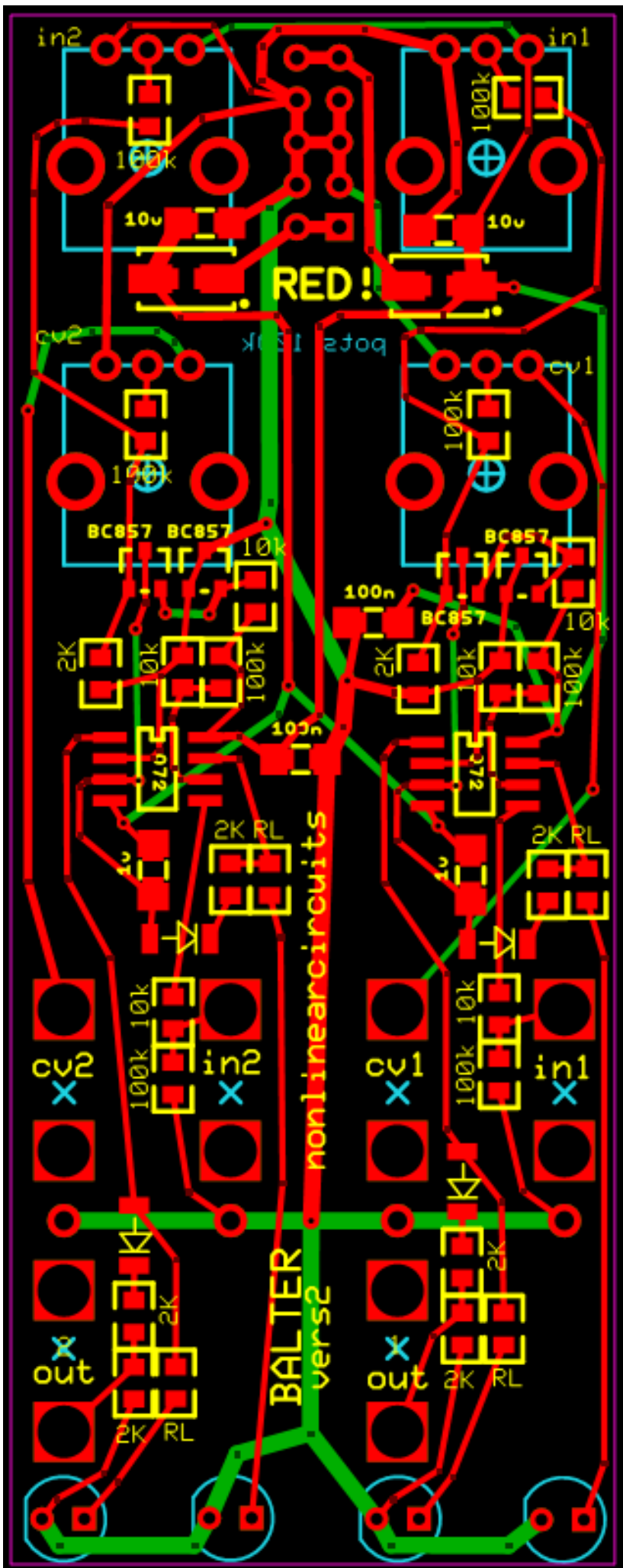
VALUE	QUANTITY	DETAILS
100n	2	0805 OR 1206 25V rating or higher
1 μ F	2	0805 OR 1206 25V rating or higher
10 μ F	2	0805 OR 1206 25V rating or higher
RL (resistor for LED)	4	0805, select to suit LED brightness (I use 10k)
2K	8	0805
10k	6	0805
100k	8	0805
BC857	4	Tayda: A-1345
LL4148 diodes	4	
TL072 or TL082	2	soic Tayda: A-1139
LED for panel	4	3mm
100k (B) pot	4	Tayda: A-1848
Eurorack 10 pin power connector	1	Tayda: A-198
Schottky, power rectifier or 10R, optional - for reverse voltage protection...or not	2	SMD, Schottky (best option) or standard power rectifier diode 50-600V 1A or more, dot on PCB indicates CATHODE (stripe on component) Or use a resettable fuse or just a 10R. SEE NOTES #2
3.5MM SOCKET Kobiconn style	6	Tayda: A-865 or preferably get Thonkiconn Jacks (PJ301M-12) from Thonk or Modular Addict

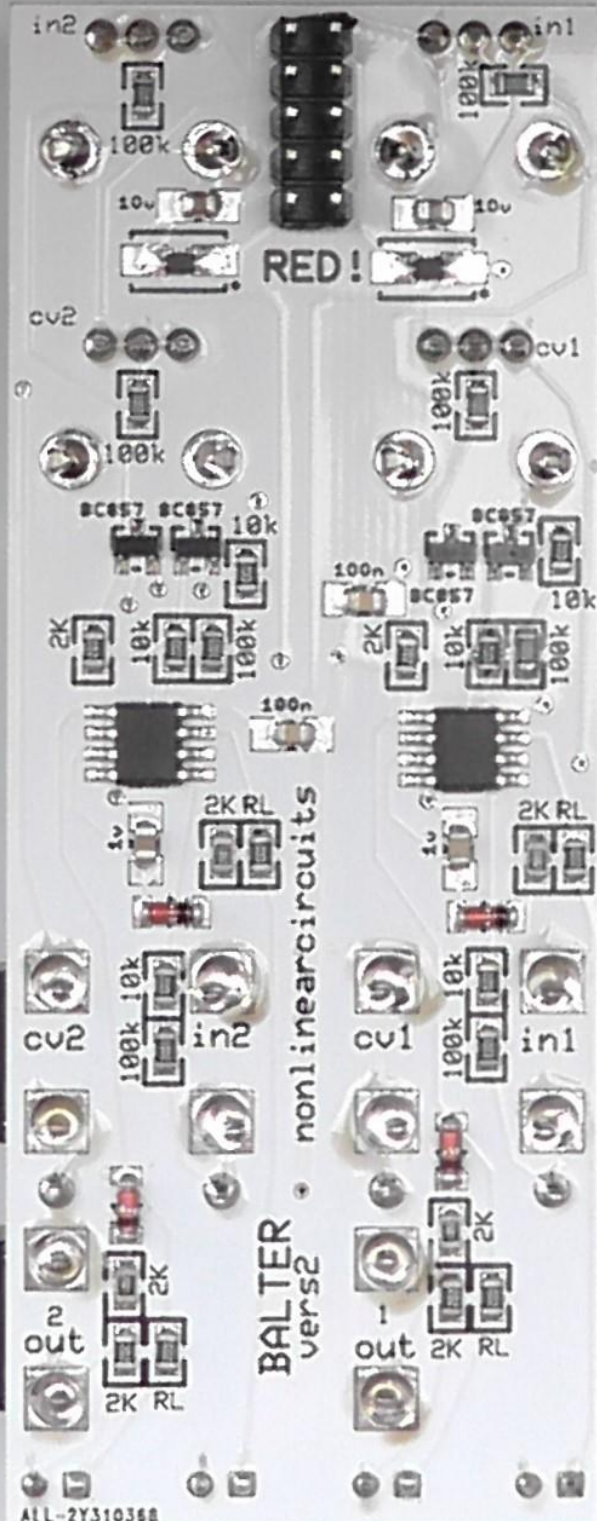
Additional notes:

1. Capacitors can be 0805 or 1206, whatever is easiest to find.
2. Some power diodes: PMEG2005EGWX SCHOTTKY RECT, AEC-Q101, 20V, SOD-123, PMEG2005EH DIODE, SCHOTTKY, 0.5A, 20V, 1N400x or S1JL or similar
3. The resistors, caps and transistors are cheapest from Tayda. Diodes from Mouser/E14/Farnell/etc.
4. Join the Nonlinearcircuits Builders Guild on FB: <https://www.facebook.com/groups/174583056349286/> and ask questions there if you have any. If you prefer not to FB then email is fine.
5. Also, please note the pots go on the side of the PCB that has the pot symbol screenprinted, this is different to previous NLC PCBs.



nonlinearcircuits		
Balter (VC gate delay)		
andrewF	Rev 1.0	Page # or name
	17 Oct 2018	





Jose Luis Torrente

ALL-2C310369