



Zyter Thermal Alert TM

"Helping gain visitors, customers and employees confidence back"



Connect . Integrate . Collaborate .

DISTRIBUTED BY:

MTN EMERGENCY SERVICES



Thermal Alert™ What Zyter® Offers



Helping gain visitors, customers and employees confidence back

A dual spectrum thermal imaging solution with high-accuracy live temperature tracking in visible and thermal spectrum modes

DISTRIBUTED BY:



MTN EMERGENCY SERVICES



Thermal Imaging

Ability to measure human body temperature of multiple people simultaneously through non-contact monitoring



Multiple Install Options

Setup options include standalone, central or drive-through detection modes (including the ability to connect to customer's network)



User Experience

Smart alerts on monitor, mobile and web – Highly customizable with optical, thermal images and body temperature



Crowd Detection and Distance

Able to detect multiple individuals (up to 6) within the temperature detection zone from a distance of 20 feet away



Military Grade Security

Device-to-device 256 bit AES encrypted. HIPAA, FedRAMP and FISMA compliant DoD / VA Authority to Operate

CORE SERVICES



Custom Chat



SMS/MMS



Voice Calls



Video Calls



Secure Cloud



Async Messaging



Geo Location



Broadcasts



Alerts



Campaigns



File Transfers



Authentication



3rd Party APIs



Scheduling

Zyter Thermal Alert™

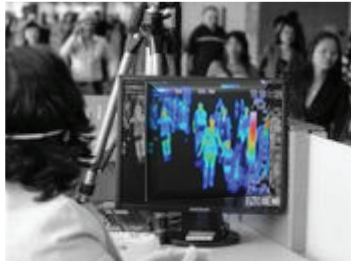


DISTRIBUTED BY:



MTN EMERGENCY SERVICES

A dual spectrum thermal imaging solution with high-accuracy live temperature tracking in visible and thermal spectrum modes



SETUP OPTIONS

Setup options include standalone, central or drive-through detection modes. Graphical views can be customized by customer and user groups

TEMPERATURE

Easily capture and track temperatures between 68 F TO 122 F.

ACCURACY

High precision non contact temperature measurement, error ± 0.3 C or ± 0.55 F

INTUITIVE

High resolution infrared imaging accurately pinpoints people with an abnormal body temperature.

DUAL SENSORS

Intelligent algorithm for visible and thermal imaging camera system, face detection with accurate temperature measurement.

SMART ALERTS

Automatic real time alarms and customizable threshold temperature for abnormal body temperature.

LIVE TRACKING

24/7 real time rapid body temperature screening.

EASY DEPLOYMENT

Camera & PC constitutes a small temperature measurement station, supporting offline and online deployment.

ADAPTABILITY

Adaptable to small facilities such as entrances, stores, set up options such as walls and posts and more.

MOUNTING

Tripods and wall mounts are included for floor and wall mounting.

WIDE RANGE

Temperature detection zone is between 6 to 15 feet.

CROWD DETECTION

Able to detect multiple individuals (up to 6) within the temperature detection zone.

NETWORK

IP enabled cameras distribute live feeds via internal network.

SECURITY

Infrared non contact temperature measurement reduces the risk of cross infection.

EFFICIENT

Detect multiple people simultaneously with detection time < 1 s.

Zyter Credibility



- ✓ Zyter instance currently live at a Military Treatment Facility (MTF)
- ✓ The communication platform underpinning Zyter processes over **500 billion** messages a year
- ✓ Authority to operate (ATO) at DoD and VA
- ✓ Contract awarded to expand Zyter platform to 16 US Military Hospitals based on superior performance
- ✓ Zyter prescreening and virtual care for COVID-19 pandemic containment (DHA approval in place for Gov cloud deployment)

DISTRIBUTED BY:



MTN EMERGENCY SERVICES

Zyter solution already live at

- ✓ Federal
- ✓ Commercial Healthcare
- ✓ Events & Entertainment
- ✓ Transportation

Thermal Imaging in action – Pls click URL below to play v



[Video URL](#)

Case Study #1: Large Retail Giant



DISTRIBUTED BY:



MTN EMERGENCY SERVICES

Leading American department store chain having 3200+ distribution centers and retail centers across United States.



Zyter Solution: Smart Screening

Thermal Imaging Cameras at the entrance checks the temperature providing seamless user experience and enables streamlined non-contact temperature monitoring at scale

Advanced AI-powered analytics integration a broad range of data sources



A graphical view can be customized to user requirement and user groups

Potential Benefits

Customizable

Customizable to the unique circumstances and specific business requirements

Efficient

Efficient by directing attention and resources where it matters most with efficiency through automation and integration of workflows

Risk aware

Risk aware through AI-powered data analytics to model and assess risks and inform decisions

Case Study #2: Hospital System



DISTRIBUTED BY:



MTN EMERGENCY SERVICES

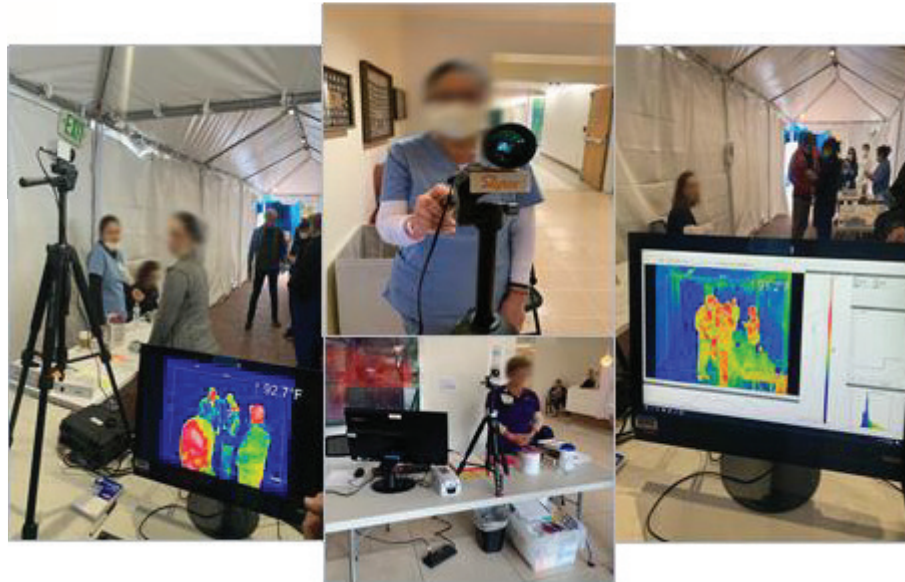
Leading clinical research center, hospital and graduate medical school located in California, United States.



Zyter Solution: Smart Screening & Care Coordination

Thermal Imaging Cameras mounted at the entrance of the clinic / tents automatically checks the temperatures of the patients / members as they enter into the arena. The solution provides the live screening of the patients on dedicated readers.

Advanced AI-powered analytics integration a broad range of data sources



Potential Benefits

Care Coordination

Triggering alerts to the nursing staff / care team & Emergency virtual care coordination with specialists as required

Efficient

Efficient by directing attention of doctors where it matters most with efficiency through automation and integration of workflows

Data Analysis & Alerts

Thermal camera data analysis and alerts to the emergency response team as required based on the results

Zyter Thermal Alert™ Specifications



DISTRIBUTED BY:



MTN EMERGENCY SERVICES



PRODUCT PERFORMANCE

- Measurement range: 86 degrees F to 113 degrees F
- Accuracy: $\leq \pm 0.5^\circ$ Fahrenheit
- Temperature display: Display the maximum temperature point
- Alarm: 1*input, 1*output
- Network protocol: Support HTTP; TCP; RTSP; RTP; UDP; RTCP; support ONVIF 28181
- Web: Support Web Configuration
- Video Compression: H.265/H.264/MJPEG
- Power supply: DC12V
- Installation method: By bracket/By Pole/By tripod



VISIBLE CAMERA SYSTEM

- Image Sensor: 1/2.8" 2MP CMOS
- Resolution: 1920*1080
- Min. Illumination: Color: 0.005Lux; B/W: 0.0005Lux; 0Lux (IR on)



THERMAL CAMERA SYSTEM

- Sensor: Uncooled vox sensor
- Resolution: 320*240
- Spectral range: $8\mu\text{m} \sim 14\mu$
- NETD: $\leq 50\text{mK}@77^\circ\text{F}$, F#1.0
- Focal Length: 12mm/20mm a thermal lens
- Image process: DDE image enhancement/3D digital Noise Reduction/Accurate blind elimination/No bright spots and dark spots in the FOV
- Image Mirroring: Left-Right/Up-Down/Opposite Angles
- Digital zooms: 1.0~8.0X continuous zoom, digital zoom picture in picture eagle chart display
- Pseudo color: Support White/Hot, Black /Hot, and other 16 type pseudo color



ENVIRONMENTS

- Working temperature: -40°F to approximately 149°F
- Humidity: $\leq 95\%$
- Vibration: 4.3g, Random vibration, all axial
- Shock: 40g, 11ms, ack peak sawtooth wave, all axial
- Ingress Protection: IP66, Anti-lighting TVS 6000V, Surge protection



DISTRIBUTED BY:



MTN EMERGENCY SERVICES

THANK YOU

2600 Tower Oaks Blvd,
Rockville, MD 20852, (USA)



(301)355 7727



info@zyter.com



<https://www.zyter.io>