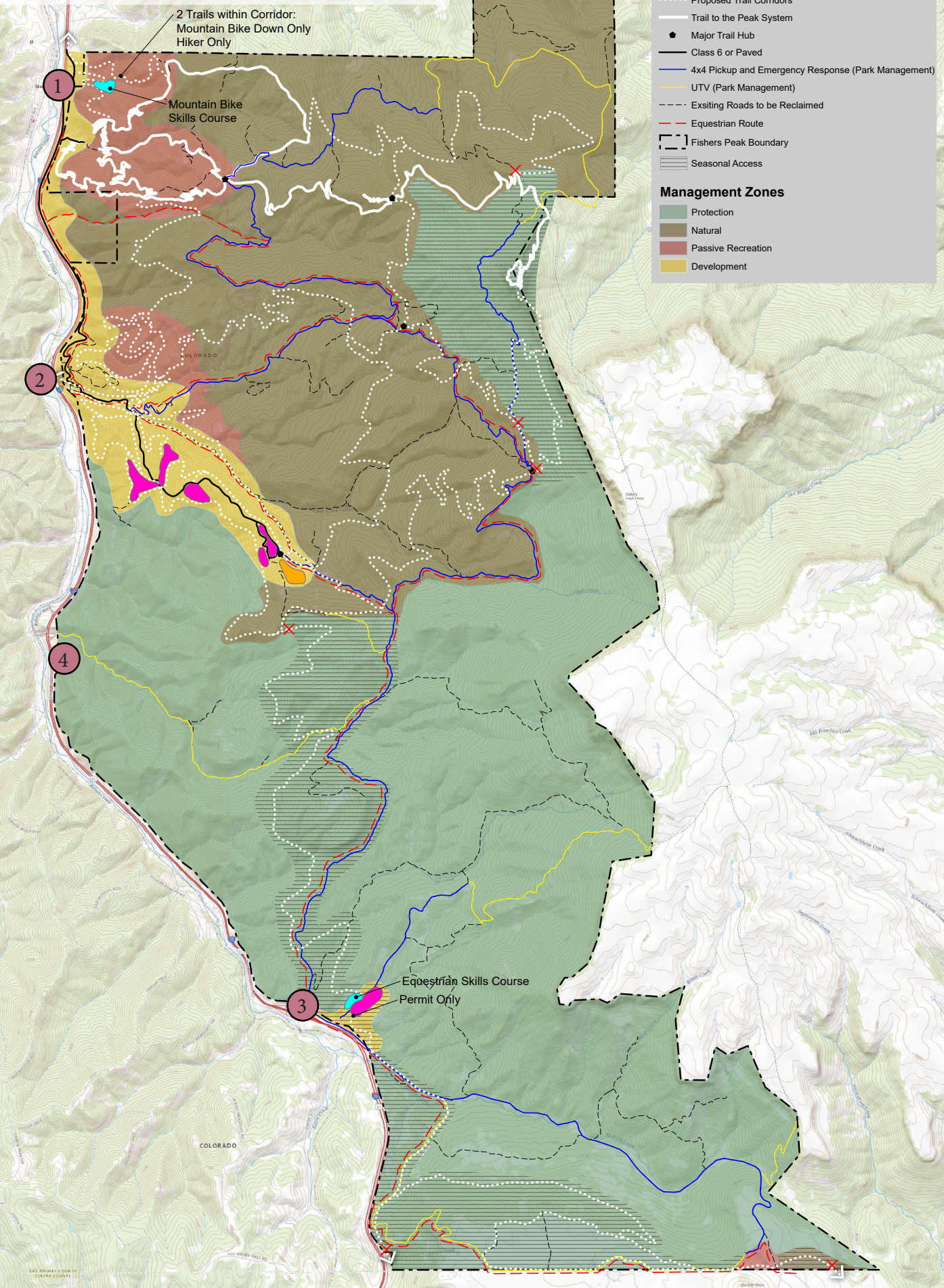


**FISHERS PEAK STATE PARK,
FRAMEWORK CONCEPT**

DATE: 9/28/2021 ↑ N
 0 750' 1500' 3000' 4500'
 COLORADO STATE WILDLIFE The Nature Conservancy THE TRUST FOR PUBLIC LAND ttk associates, inc.



PARK FEATURE ALTERNATIVE - MAIN PARK ENTRANCE

1. Exit 11 (preferred)

Benefits

- Takes advantage of new interchange and Frontage road
- Closest access to Trinidad using public R.O.W.
- Space for entry gate and trailhead
- Ability to manage most of the Park access from one location
- Protects historic ranch HQ setting
- Provides good access to the Trail to the Peak
- Support from CDOT
- Historic interpretation opportunities

Drawbacks

- May require property acquisition
- Requires improvements to frontage road

2. Exit 8

Benefits

- Shorter distance to visitor center
- Uses the historic main entrance to the ranch

Drawbacks

- Requires improvements to Exit 8
- Impacts the historic ranch HQ setting
- More impacts to the Clear Creek riparian area

3. Exit 2

Benefits

- Access to the southern half of the Park
- Plenty of space
- Provide access to the Park close to the pass

Drawbacks

- Does not connect easily to the main development area of the Park
- Does not provide good access to the trail to the Peak
- Impacts McBride riparian area
- Hard to control access to the north end of the Park

4. Exit 6

Benefits

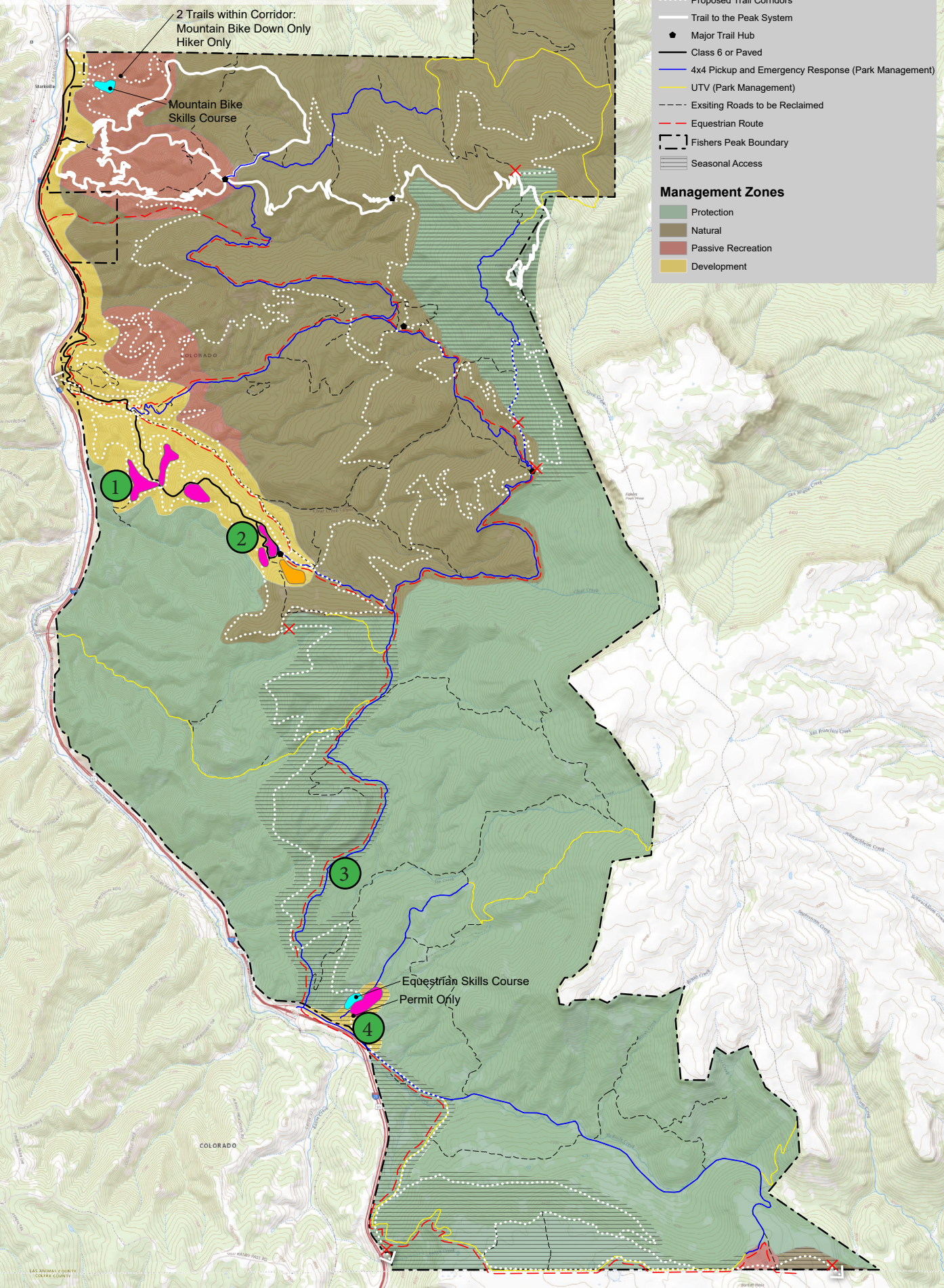
- Access to the center of the Park

Drawbacks

- No space
- Rough terrain
- Does not connect to development areas well
- Requires improvements to interchange
- Hard to control access to north end of the Park

FISHERS PEAK STATE PARK, FRAMEWORK CONCEPT

DATE: 9/28/2021 ↑ N



PARK FEATURE ALTERNATIVE - DEVELOPED CAMPING

1. Above the Visitors Center (preferred)

Benefits

- Views to Fishers Peak
- No highway noise
- Close to visitor center/camper services
- Gentle terrain
- Connected to major trail corridor system

Drawbacks

- Top of ridge exposed to the weather

2. West of Big Flats (preferred)

Benefits

- No highway noise
- Gentle terrain
- Connected to major trail corridors system

Drawbacks

- Impacts to Big Flats
- Not close to visitors center/camper services
- Top of ridge exposed to the weather

3. Below Little Baldy

Benefits

- Gentle terrain
- No highway noise

Drawbacks

- Less accessible
- No views to Fishers Peak
- Not close to visitor center/camper services
- Less connected to major trail corridor system

4. Exit 2 (preferred)

Benefits

- Good access to back Country
- Can accommodate large vehicles

Drawbacks

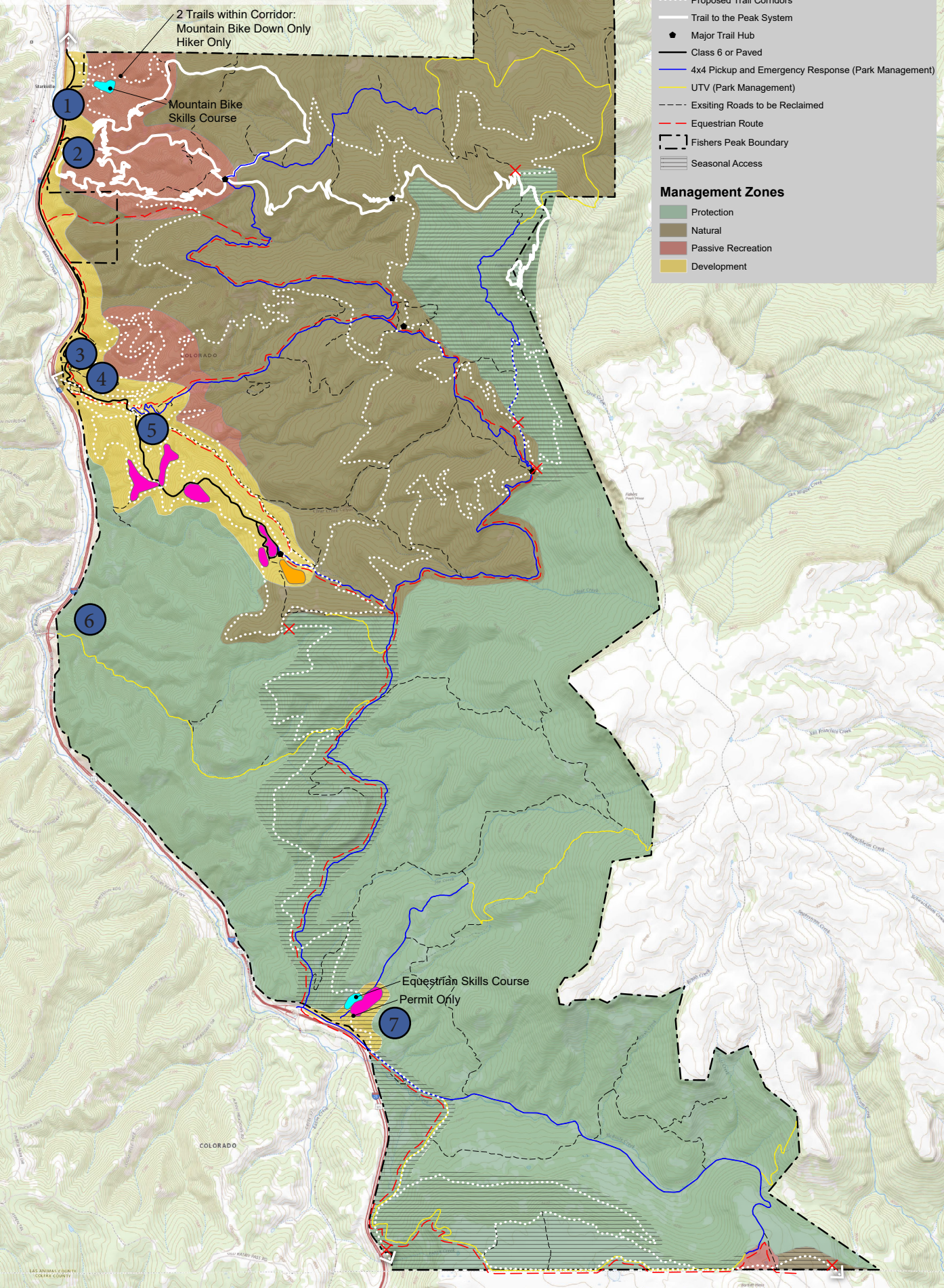
- Some highway noise
- More challenging terrain
- Limited space for camping
- Not close to visitor center/camper services
- Not located near major trail corridor system
- Far from Fishers Peak

**FISHERS PEAK STATE PARK,
FRAMEWORK CONCEPT**

DATE: 9/28/2021 ↑ N







Legend

- Campsite
- Cabins
- Skills Course
- ✗ Seasonal Closure
- Proposed Trail Corridors
- Trail to the Peak System
- Major Trail Hub
- Class 6 or Paved
- 4x4 Pickup and Emergency Response (Park Management)
- UTV (Park Management)
- Existing Roads to be Reclaimed
- Equestrian Route
- Fishers Peak Boundary
- Seasonal Access

Management Zones

- Protection
- Natural
- Passive Recreation
- Development

PARK FEATURE ALTERNATIVE - TRAILHEADS

1. Coal Pile (preferred)

<p>Benefits</p> <ul style="list-style-type: none"> Close and easy connection to Trinidad Disturbed area Ample parking Connects into the Trail to the Peak Ample room for a mountain bike skills course Interpretation opportunities 	<p>Drawbacks</p> <ul style="list-style-type: none"> Some highway noise Coal debris
--	---

2. Fishers Peak (Existing Public Trailhead)

<p>Benefits</p> <ul style="list-style-type: none"> Gentle terrain Ample parking Direct access to the Trail to the Peak It already exists 	<p>Drawbacks</p> <ul style="list-style-type: none"> Can be subject to flooding Some highway noise
---	--

3. Above HQ (preferred)

<p>Benefits</p> <ul style="list-style-type: none"> Direct access to a SP overlook with picnicking Provides access to close in trail loops 	<p>Drawbacks</p> <ul style="list-style-type: none"> More challenging terrain Limited parking Some highway noise
--	---

4. Lower Clear Creek (preferred)

<p>Benefits</p> <ul style="list-style-type: none"> Provides access to HQ and ranch buildings Provides access to close in Trail Loops Ample parking 	<p>Drawbacks</p> <ul style="list-style-type: none"> Some highway noise Close to Clear Creek
--	--

5. At Visitors Center (preferred)

<p>Benefits</p> <ul style="list-style-type: none"> No highway noise Ample parking including large vehicles and horse trailers Forested terrain/setting 	<p>Drawbacks</p> <ul style="list-style-type: none"> Close to Clear Creek
--	--

6. Exit 6

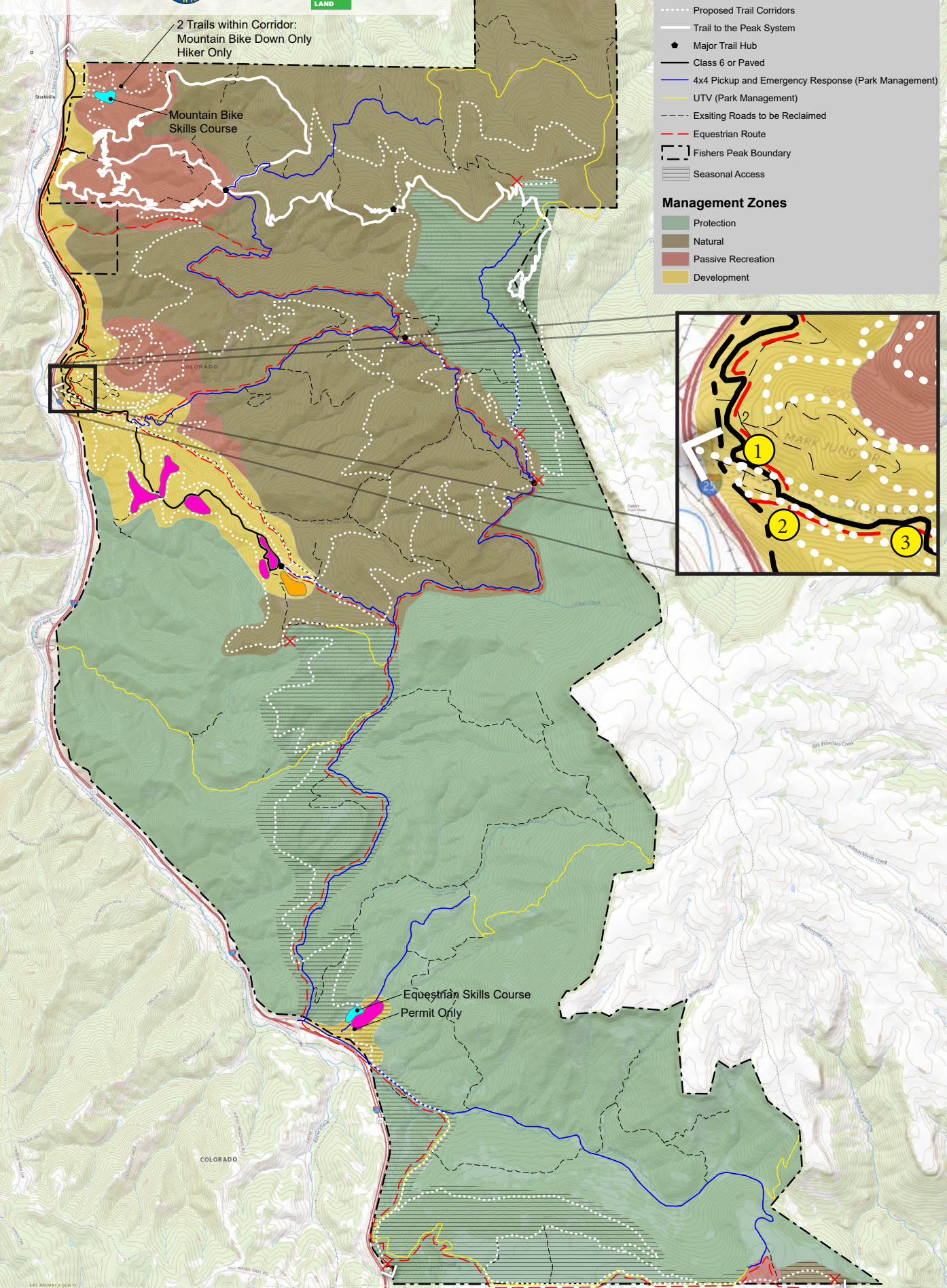
<p>Benefits</p> <ul style="list-style-type: none"> Close to Exit 6 on I-25 	<p>Drawbacks</p> <ul style="list-style-type: none"> Limited parking Highway noise Challenging terrain (very tight canyon) Very limited access to trail system Standalone entrance off I-25 (management issue)
--	---

7. Exit 2 (preferred)

<p>Benefits</p> <ul style="list-style-type: none"> Direct access to southern end of trail system Ample parking including large vehicles and horse trailers Forested terrain/setting 	<p>Drawbacks</p> <ul style="list-style-type: none"> Standalone entrance off of I-25 (management issue) Highway noise
---	---

**FISHERS PEAK STATE PARK,
FRAMEWORK CONCEPT**

DATE: 9/28/2021 ↑ N
 0 750 1500 3000 4500
 COLORADO STATE WILDLIFE THE NATURE Conservancy THE TRUST FOR PUBLIC LAND ttk associates, inc.



Legend

- Campsite
- Cabins
- Skills Course
- ✗ Seasonal Closure
- ⋯ Proposed Trail Corridors
- Trail to the Peak System
- Major Trail Hub
- Class 6 or Paved
- 4x4 Pickup and Emergency Response (Park Management)
- UTV (Park Management)
- Existing Roads to be Reclaimed
- Equestrian Route
- Fishers Peak Boundary
- ▨ Seasonal Access

Management Zones

- Protection
- Natural
- Passive Recreation
- Development

PARK FEATURE ALTERNATIVE - VISITOR CENTER

1. HQ Area

Benefits

- Developed area
- Open terrain
- Ranch HQ history/context
- Ample parking

Drawbacks

- No views
- Highway noise
- Building and parking may destroy historic HQ setting
- No connection to park terrain and resources

2. Above Corral Area

Benefits

- Disturbed area
- Gentle terrain
- Slight view of Fishers Peak
- Ample parking

Drawbacks

- Partial view
- Some highway noise
- Less interesting site/context

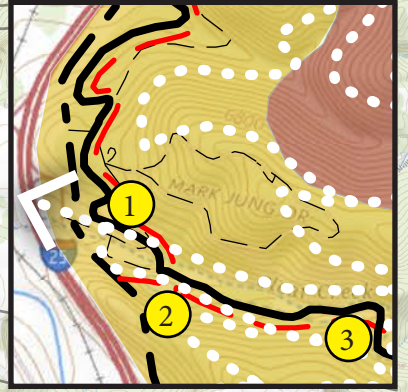
3. Confluence Area (preferred)

Benefits

- Impressive view of Fishers Peak, mesa, and canyons
- Forested terrain/setting
- Proximity to camping and trails

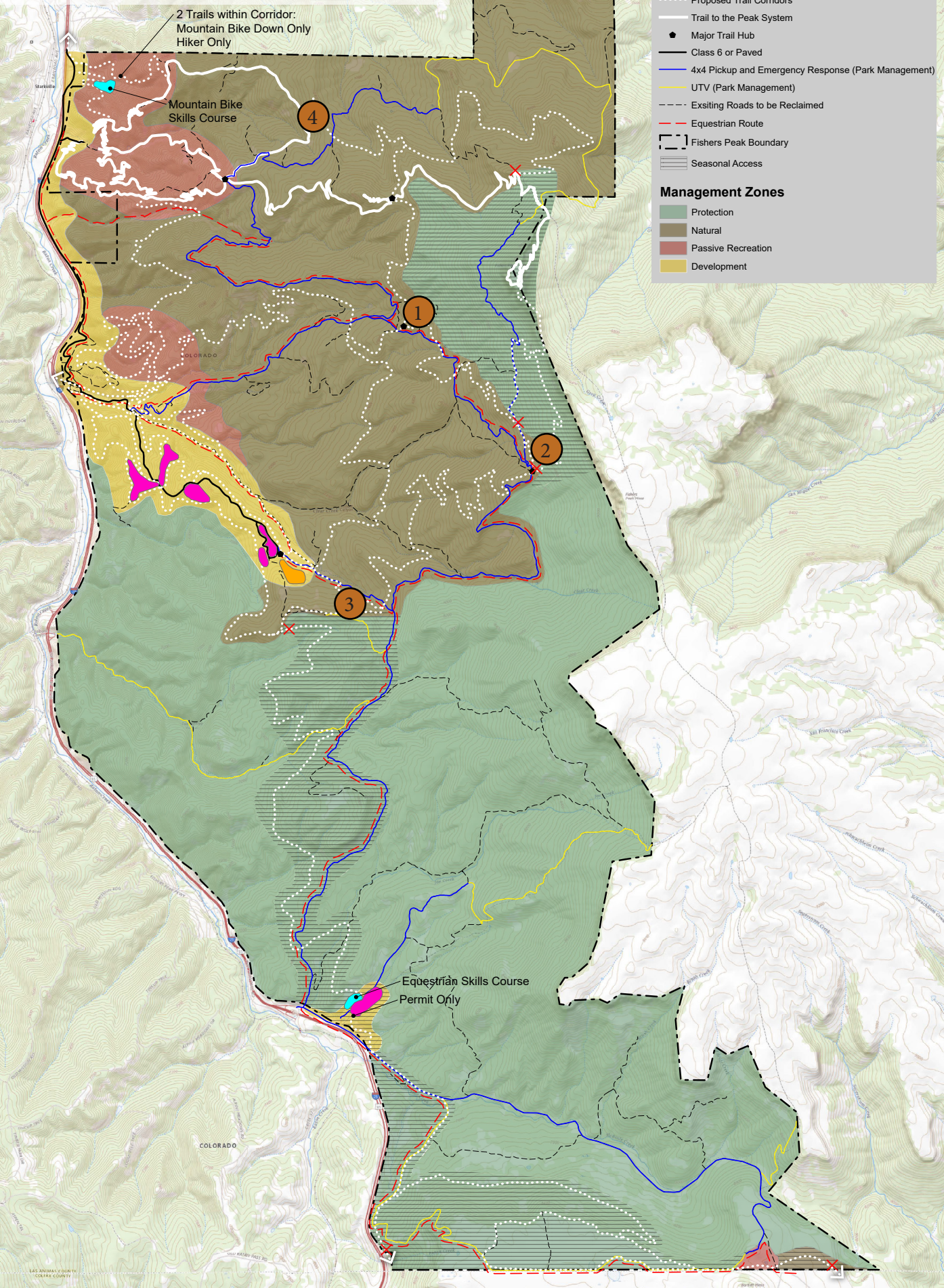
Drawbacks

- Challenging terrain
- Limited space for parking



**FISHERS PEAK STATE PARK,
FRAMEWORK CONCEPT**

DATE: 9/28/2021 ↑ N
 0 750 1500 3000 4500
 COLORADO STATE WILDLIFE The Nature Conservancy THE TRUST FOR PUBLIC LAND ttk associates, inc.



PARK FEATURE ALTERNATIVE - BACK COUNTRY CAMPING

1. Above Maxwell Road (preferred)

Benefits

- Gentle terrain
- Can access with maintenance vehicle
- Great views to Fishers Peak
- Provides great second day access to Fishers Peak
- Ample room for campsites

Drawbacks

2. North of Marion Flats (preferred)

Benefits

- Can access with maintenance vehicle
- Great views west and south across the Park
- Provides great second day access to Fishers Peak

Drawbacks

- Fewer opportunities for camp sites due to steeper terrain
- Close to Protection Management Zone (camping may have seasonal closures)
- Could have impacts to Marion Flats

3. Above Big Flats (preferred)

Benefits

- Gentle terrain
- Can access with maintenance vehicle
- Great views of Fishers Peak, the northern end of the Park, and Big Flats
- Provides great second day access to the north or south end of the Park (in the middle of the Park)

Drawbacks

- Could have impacts to Big Flats
- Exposed to the weather

4. North End

Benefits

- Gentle Terrain
- Can access with maintenance vehicle
- Great views of Fishers Peak

Drawbacks

- Too close to the Front Country
- Less than halfway to the Peak
- Exposed to the weather