

**Legend**

- 0% - 7%
- 7% - 12%
- 12% - 20%
- 20% - 26%
- 26% - 35%
- 35% - 45%
- 45%+
- FISHERS PEAK BOUNDARY
- EXISTING ROADS

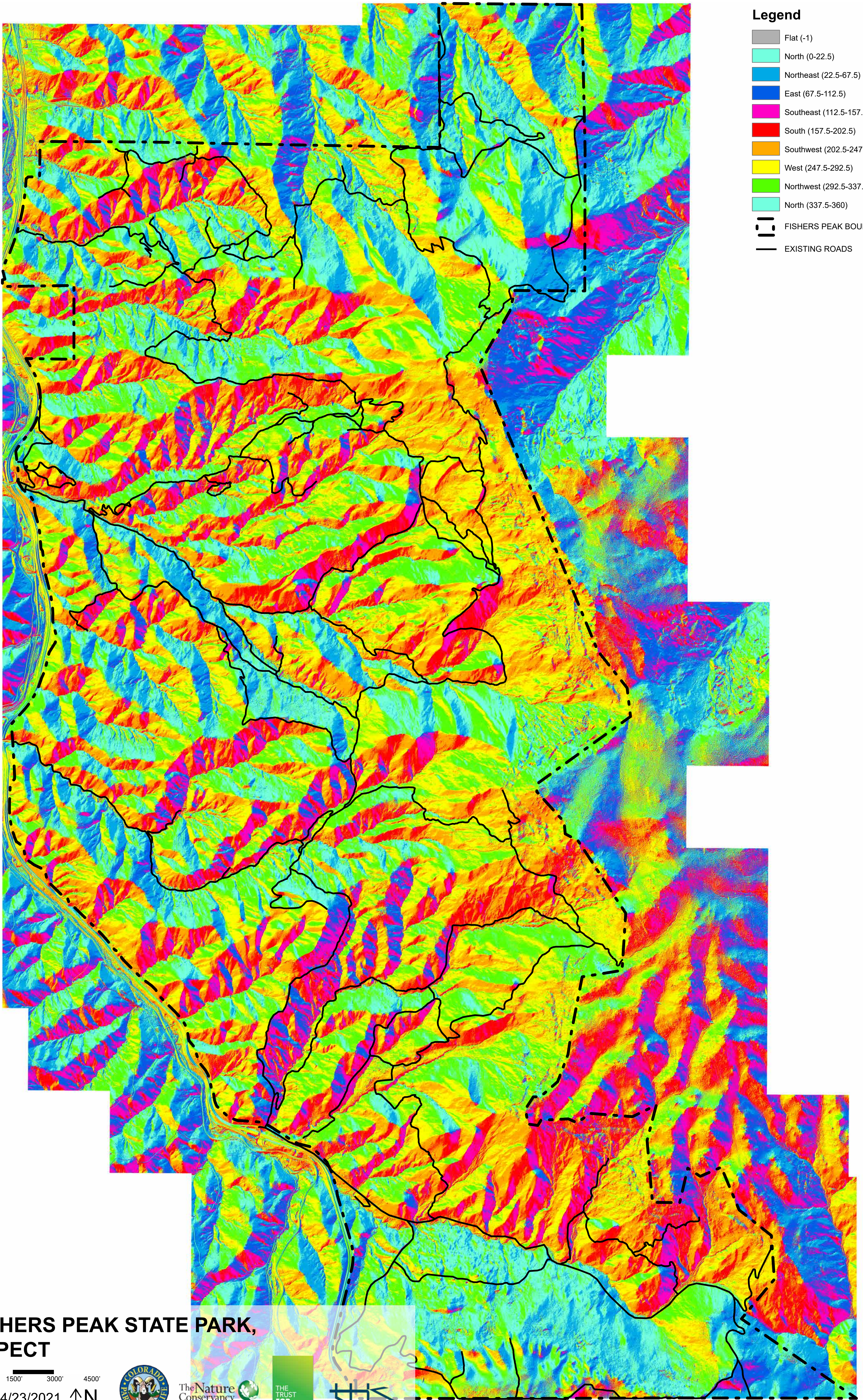
**FISHERS PEAK STATE PARK,  
SLOPE**

0' 750' 1500' 3000' 4500'

DATE: 4/23/2021 ↑N







**FISHERS PEAK STATE PARK,  
ASPECT**

0' 750' 1500' 3000' 4500'

DATE: 4/23/2021 ↑ N

