

BACS™ Tube

You Are The Key.

Multi-biometric Access Control for Industrial Automation Security

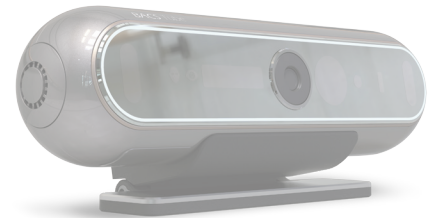


An innovative solution for protecting assets using face and iris biometric authentication.

Tube reduces time and effort required in the existing card or password logon process while maintaining quality control through an efficient access control process.

BACS™ Tube is the world's first multi-biometric access control solution for the industrial automation environment. It features an array of cutting-edge technologies, including iris and facial recognition authentication. BACS™ Tube delivers convenience and highly accurate non-contact authentication to enterprise engineers in any conditions. With a simple look into the mirrored panel, BACS™ Tube provides the reliable security technology the industry has been waiting for.

Powered by 2G Hz Hexa Core ARM CPU, an ultra fast focusing sensor system, and a 3-step identification algorithm; BACS™ Tube offers top-rated card & PIN-free security, in under a second. Maximize your productivity and protect your assets with BACS™ Tube, the future of industrial automation security.



I Security and Reliability I

- Multi-biometric authentication - Face & iris
- AES 256 data encryption
- Remote data management, firmware update and access control management via CruAMS (CrucialTrak Access Management System)

I Performance I

- High-speed data processing
- Support sound and LED indicator
- Various management functions such as time and attendance, restricted area, Distance control, etc.
- Logging for up to 100,000 events

I Compatibility I

- Easy integration with diverse supporting connections : Wifi, Ethernet, RS-485, RS232C, Wiegand
- Supports built-in relay

I Convenience I

- Simultaneous authentication
- Full mirror display for optimal UX



	BACS™ Tube	
CPU	2 G Hz Hexa Core ARM CPU	
Memory / Storage	2 G / 32 G	
Built-in Display	Motion-activated light	
Audio Out	Sound effect	
Proximity Sensor	Built-in	
Optional Display	HDMI monitor (Debug, FHD must be supported)	
Operation Mode	Iris, Face (Single and multi-mode)	
Biometric Recognition	Iris	Face
Camera	5 M Pixel	1.3 M Pixel
Focus	Liquid Lens auto focal	Fixed focal
Recognition Distance	Up to 60 cm / 23.6 in	~2 m / ~6.5 ft
FAR / FRR of Algorithm	0.000001 / 0.1	0.001 / 0.1
Capacity	Up to 1,000 Iris	Up to 500 faces
Lighting Source	Infra Red	Natural Light (min 600 lux)
Encryption	AES256	
Safety	IEC - 62471	
Event Log Capacity	100,000 events	
Communications	Wi-Fi, Gigabit Ethernet, RS - 485, USB 2.0	
External Interface	USB 2.0 & HDMI (Debug)	
Remote Control	Built-in WEB server	
Input / Output	RS485, RS232C, Wiegand out, Relay x 1 GPO x 3 (open drain port), 18p socket, RJ45, HDMI micro 4p (Debug), USB 2.0 (Debug)	
Power	12V DC / 3A	
Dimensions	180 mm x 57 mm x 55 mm / 7.1 in x 2.2 in x 2.1 in	
Weight	0.4 kg / 0.9 lb	
Color	Pearl Black	
Languages	English (Customization available)	
Operating Temperature	0 ~ 60 °C / 32 ~ 140 °F	
Operating Humidity	5% ~ 80%	
Housing Materials	Flame retardant ABS, Poly Carbonate, PP	
Management SW	CruAMS (CrucialTrak Access Management System)	
Mounting	Piggy back mounting	
Certifications	CE, NRTL, TUV, FCC, KC	

Korea Headquarters | 62 Pangyo-ro 255, Bundang, Seongnam 13486, Korea
 US Headquarters | 820 Gessner Road, Suite 1275, Houston, TX 77024

BACS and You Are The Key are trademarks of CrucialTrak Inc. Specification are subject to change without notice.
 Copyright © All rights reserved by CrucialTrak Inc.



CrucialTrak is available in the Americas through a strategic
 business alliance with CBC AMERICA.



CORP HQ. +1 (919) 230-8700 | WEST COAST +1 (310) 222-8600
ganzsecurity.com/crucialtrak 04/19