

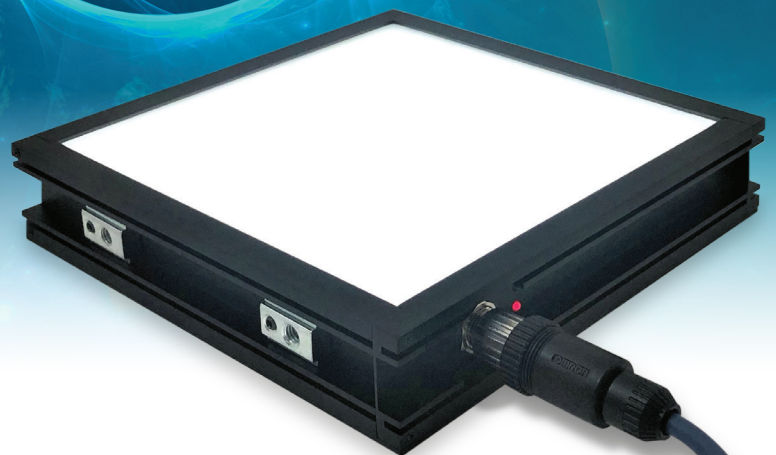


TRIDENT

**CONTINUOUS
MODE**

**BRIGHTNESS
CONTROL**

**STROBE
MODE**



Powered by



VS TECHNOLOGY
MACHINE VISION OPTICS

What is Trident?

Trident series has 3 built-in function which will be controlled by external electricity input. It's a different concept from other general VAL models which require additional controller to control brightness, overdrive etc. Trident series will be connected directly to your system (saving cost).

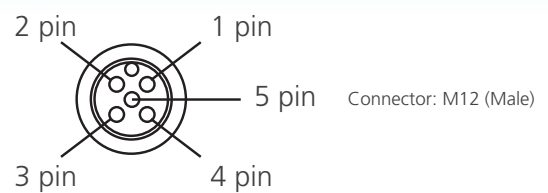
**CONTINUOUS
MODE**

**BRIGHTNESS
CONTROL**

**STROBE
MODE**

Connection

Pin No.	Pin Assignment
1	DC 24V
2	Trigger (NPN)
3	GND
4	Trigger (PNP)
5	Brightness Control (1-10V)



Indicator

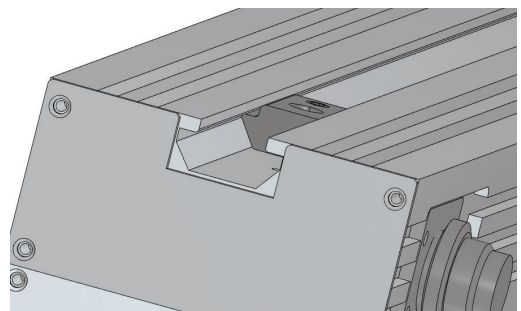
All the Trident models has indicator to understand the status of both 24V in and lighting mode (Continuous or Strobe).



Lamp	Detail
● Red	ON: 24V connected / OFF: No D24V in/out
● Green	ON: Strobe Mode / OFF: Continuous mode

T-Slot design

Bar Light and Back Light, Top Light has T-slot which is useful for clamping.



Bar Light / VL-T-AB series

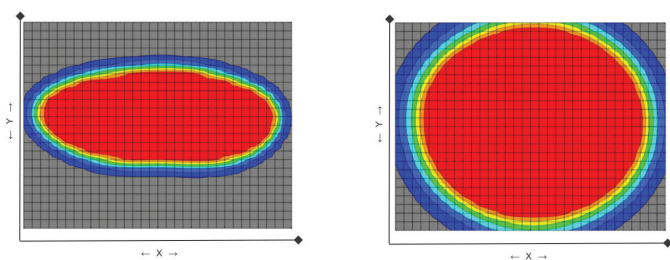


Model No.	Dimension of Lighting Area	Color
VL-T-AB15030W-1	150 x 30 (mm)	○ White
VL-T-AB30030W-1	300 x 30 (mm)	○ White
VL-T-AB45030W-1	450 x 30 (mm)	○ White

Light Distribution

Left / FOV 160 x 120mm / LWD 65mm

Right / FOV 160 x 120mm / LWD 265mm

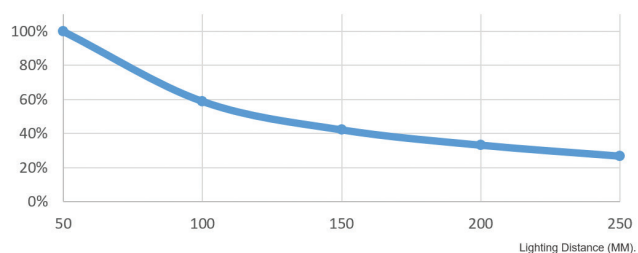


Brightness Distribution

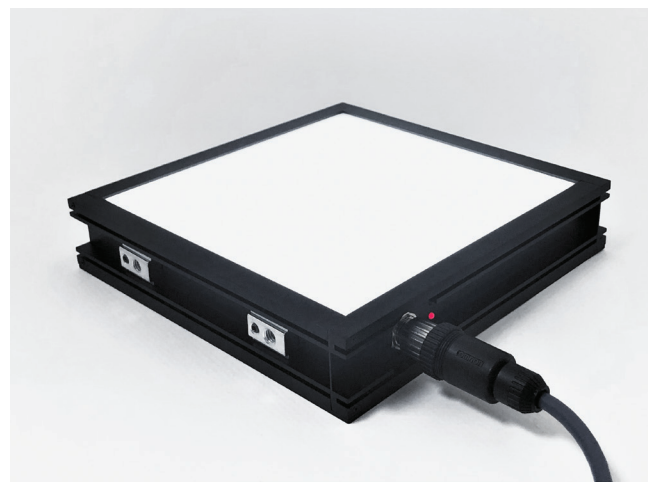
Luminance Max. 78,000lux (Continuous Mode)

Relative Luminance

* Luminance on the optical axis.



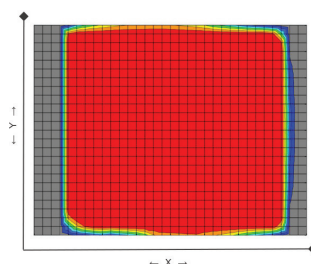
Bar Light / VL-T-ADB series



Model No.	Dimension of Lighting Area	Color
VL-T-ADB1515W	150 x 30 (mm)	○ White
VL-T-ADB3030W	300 x 30 (mm)	○ White

Light Distribution

Left / FOV 150 x 90mm / LWD 0mm

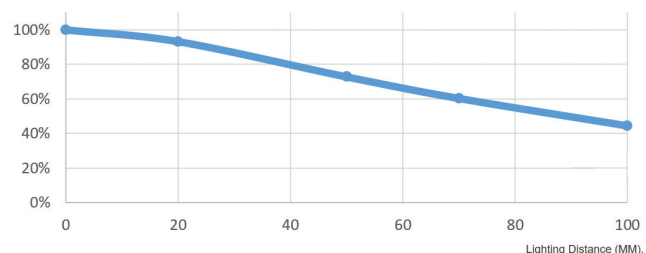


Brightness Distribution

Luminance Max. 44,000lux (Continuous Mode)

Relative Luminance

* Luminance on the optical axis.



Square Light / VL-T-ADS serie

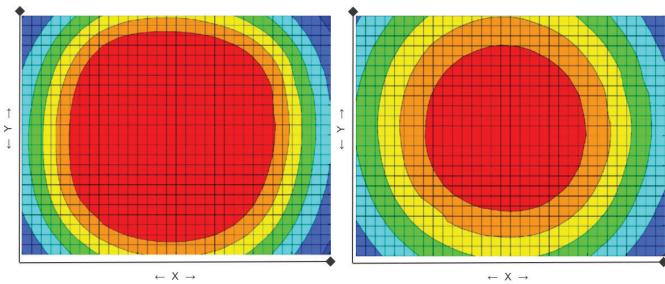


Model No.	Dimension of Lighting Area	Color
VL-T-ADS1010W	ID52 / 100 mm	O White

Light Distribution

Left / FOV 150 x 115mm / LWD 130mm

Right / FOV 150 x 115mm / LWD 200mm

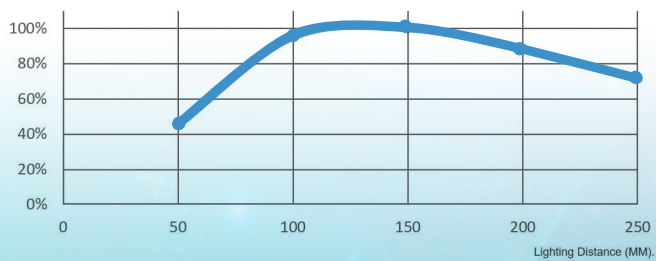


Brightness Distribution

Luminance Max. 42,000lux (Continuous Mode)

Relative Luminance

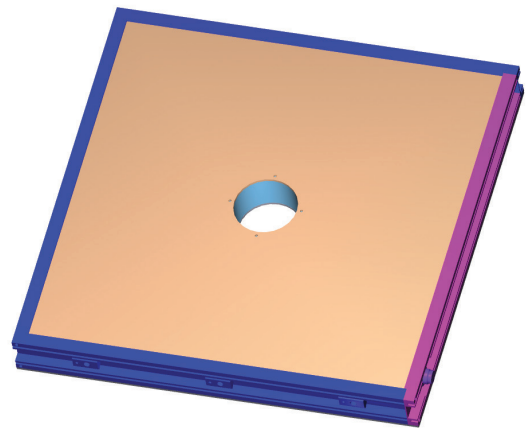
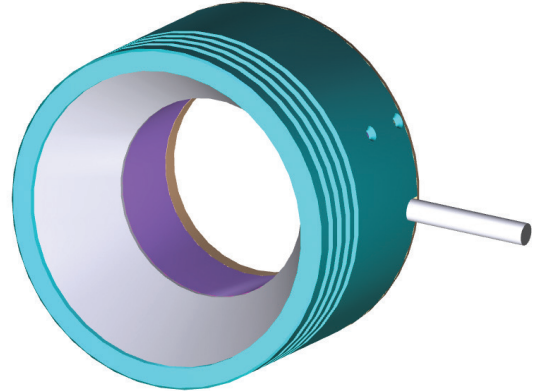
* Luminance on the optical axis.



Remark: This technical data is a reference data. All the information above are measured by our own equipment. The value will be changed depends on conditions and method. So the data does not guarantee the performance.

Other Models

- Top Light
- Diffused Low Angle Ring Light
- Other wavelength is also available.



www.val-mvlight.com