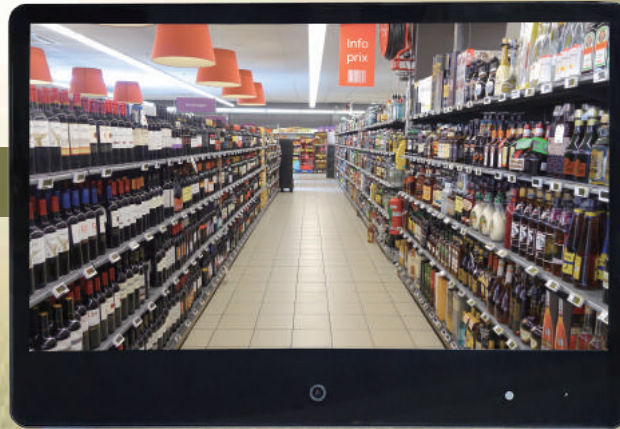
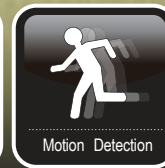




IP HD PVM



ONVIF



32IPHPVM

OVERVIEW

The ORION Images 32 inch IP HD PVM (Public View Monitor) with built in camera and motion detection becomes a highly effective theft deterrent tool creating awareness that a security surveillance system is in place.

FEATURES

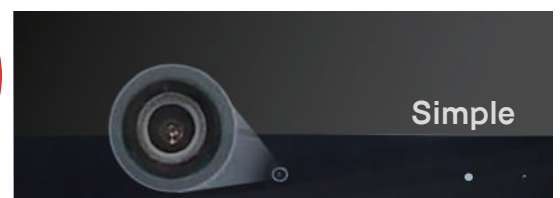
- » Built-In 1 / 2.8" SONY CMOS
- » 3.6mm fixed focus, Horizontal field of view: 87.6° / Vertical field of view: 46.4°
- » 1920 x 1080 Resolution, 400 Nits, 1300:1 Contrast
- » 3D Comb Filter / Noise Reduction / DeInterlace
- » Motion Detection On/Off
- » Frame Rate Up to 30fps@1920x1080p
- » BNC (CVBS) Out, HDMI 1 In, VGA 1 In, Audio 1 In(PC)
- » Non-polar input 24V DC Power
- » Metal Chassis with Tempered Glass
- » Multi Media Play support (Optional)



Industrial



Interface



Simple



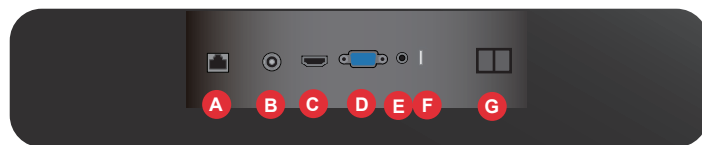
Built to run 24 x 7 x 365
Continuously

SPECIFICATIONS

32IPHPVM	
Display	
Screen Size	32 Inch
Backlight Unit	LED BLU
Max. Resolution	1920 x 1080 @ 60Hz
Pixel Pitch	0.3638 x 0.3638mm
Brightness	350cd/m²
Contrast Ratio	1200 : 1
Aspect Ratio	16 : 9
Viewing Angle (H/V)	178° / 178°
Display Color	16.7 Million
Response Time	< 8ms
Video System	NTSC / PAL
Interface	
Internal Camera Out (BNC Out)	1 Out
LAN RJ45	1 In
HDMI In	1 In
VGA In (15Pin D-Sub)	1 In
Audio In (PC)	1 In
MICRO SD	1 In
TERMINAL BLOCK (-/+)	1
MMP (Optional)	
Support Type	JPEG, Video, Audio
Support File Format	MPEG4, JPEG Support
Memory - External	USB (Max. 32GB)
Transmitter	
Remote Control	Yes
Audio	
Built-in Speakers	Yes (3W x 2)
Features	
Filter Type	3D Comb Filter / Noise Reduction / DeInterlace
Multi Language	English, Spanish, French, German, Italian
Camera	
Image Sensor	1 / 2.8" SONY CMOS
Active Pixel	1945(H) x 1097(V) approx. 2.13M pixels
Scanning System	progressive scan
Min. illumination	0.0001 lux/F1.2
Lens	3.6mm fixed focus, Horizontal field of view: 87.6° Vertical field of view: 46.4°
Motion Detection	Off / On
Frame Rate	Up to 30fps@1920x1080p
Video Appearance	Brightness, Contrast, Saturation, Sharpness
Ethernet Standard	10 / 100 Base-T
Protocol	TCP/IP, UDP, IPV4/V6, HTTP, HTTPS, FTP, UPnP, RTP, RTSP, RTCP, DHCP, ARP, Zeroconf, Onvif
Security	Multi User Authority, IP Filtering, HTTPS
General	
Outline Dimension (W x H x D)	753.6 x 490.3 x 58.8 mm (29.67" x 19.30" x 2.31")
Net Weight	16.0 Kg (35.27 lbs)
Material / Color	Electronic galvanized Iron / Black
Part / Labor	3year / 3year
Consumption: < On	< 52W
Electrical Ratings	DC 24V
Operating Temperature	0° ~ 40° C / 32° ~ 104° F
Storage Temperature	-20° ~ 60° C / -4° ~ 140° F
Mounts	
VESA™ Mount Size	200 x 200mm
Wall	WB-5, 10, 30, 31
Ceiling	CMK-01

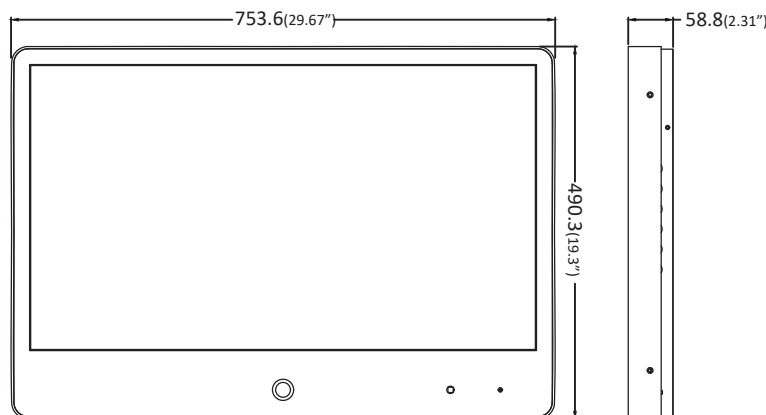
*Design and specifications are subject to change without notice

INPUT INTERFACE



A ONVIF RJ45 OUT	B BNC (CVBS) OUT	C HDMI IN	D VGA IN
E AUDIO IN	F MICRO SD	G DC 24V IN	

DIMENSIONS



OPTIONAL MOUNTS



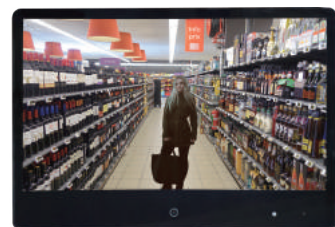
ADVANTAGES

Motion Detection & Media play (MMP)

Built-in ONVIF compliant Full HD IP Camera supports motion detection
 No Motion : Play Content (MPEG4, JPEG) from USB
 Motion detection : Display Live Camera View



No motion (Media play)



Motion detected (Live Camera View)

