



### The Old Logo

While the Seattle Public Library's current logo has worked well, there are several areas where it could be improved:

- The current look of the logo is outdated- its simple color palette and old-style serif typeface do not reflect the Library's innovative outlook and forward-thinking goals
- The current feel of the logo is static- there is little variability within the logo which does not reflect the Library's ability to provide information in a variety of media relevant to not only today's generation, but also past and future generations

### Inspiration



# Initial Brainstorming + Sketches

VALNEK AKI CENTER  


DESIGN SPRINTS  
 THE SEATTLE PUBLIC LIBRARY

## NAMES

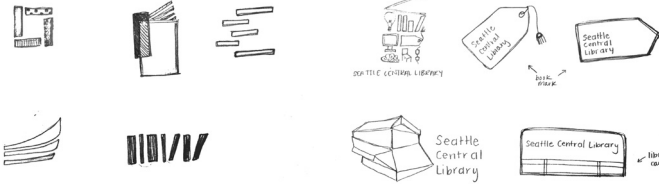
- The Reading Place
- SPL
- PLP PBP
- Public Learning Place
- BOOKS ON BOOKS
- DEWEY DEC
- DeweyDEC
- S\*READS
- Imagination Station
- SP LIBRY
- Seattle (Research) center
- Seattle (Reading) center
- Seattle (Learning) center
- Le Page
- P&P (Pages & Pages)
- Seattle Center
- SP LIBRY
- Seattle (Research) center
- Seattle (Reading) center
- Seattle (Learning) center
- Le Page
- P&P (Pages & Pages)

## TAGLINES

- Learn On
- The Imagination Station
- rustering imagination, opportunity, and community
- LIVE + GROW / LITERACY + GROW
- A public space of knowledge
- let's learn / let's read
- A legacy of learning
- Discover
- Live Learned
- Tackle knowledge
- Tackle Information in a Modern World
- Learn + Do
- Screw Books (JK)

## IMAGERY

- books (open)
- Diamond MohF / pattern
- building (unique architecture)
- people
- Brain
- computer
- hands
- squares
- Glasses
- Geometric shapes (triangles)
- card catalog
- paper texture
- hunking head
- nozzle
- lightbulb
- rain
- umbrella
- space needle
- stamp
- bookcum
- library card
- rectangles
- book binding
- book shelf
- book cart
- library card
- folded page
- bookmark
- stack of books
- Table of contents
- Index/Glossary (useful elements, rows in info org.)



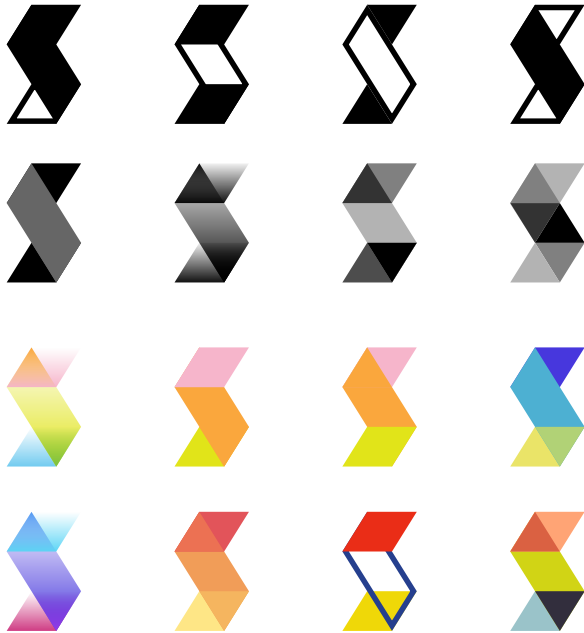
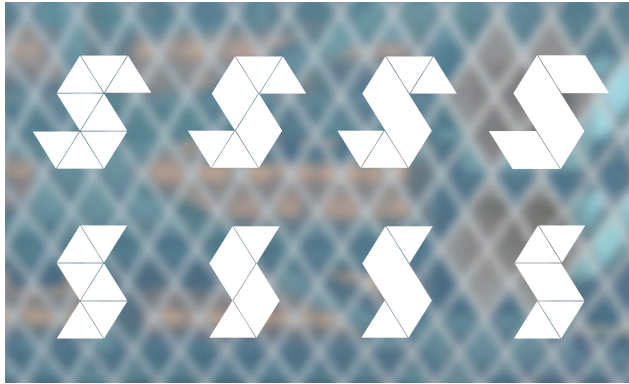
## Mission Statement

The Seattle Public Library brings **people**, **information**, and **ideas** together to enrich lives and build community.

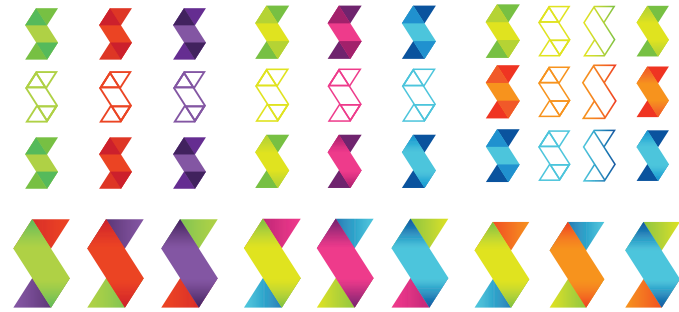
## Vision for Seattle

A city where **imagination** and **opportunity** thrive

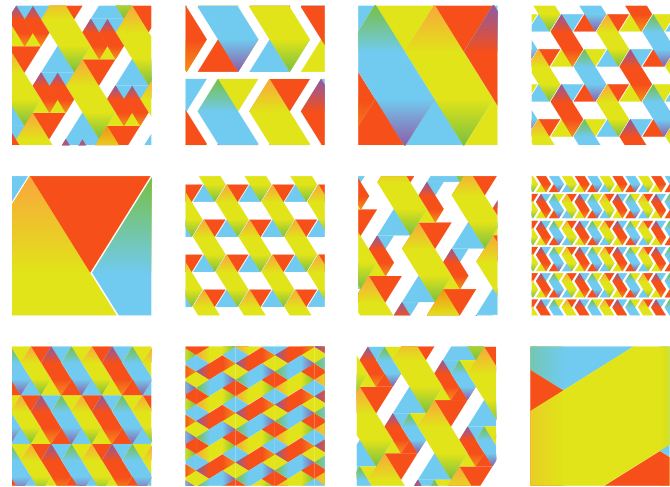
## Logo Development



## Color Exploration



## Pattern Exploration





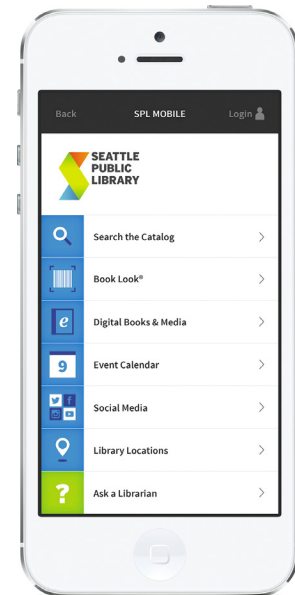
## The New Logo

The final logo abstractly represents the Seattle Public Library's mission of bringing "people, information, and ideas together to enrich lives and build community." People are represented by orange at the top of the S. Ideas are represented by blue at the bottom of the S. Information is represented by green at the spine of the S, acting as the connecting point of people and ideas. The use of gradients suggest continuums for all three components:

**People:** the Library welcomes people of all ages and backgrounds

**Information:** the Library provides information and resources in old and new formats to cater to diverse audiences and the changing world of information delivery

**Ideas:** the Library supports learning, whether it be a child getting lost in a land of fantasy or an adult conducting research for a new innovative idea





**SEATTLE PUBLIC LIBRARY**  
 100 Fourth Ave.  
 Seattle, WA 98104



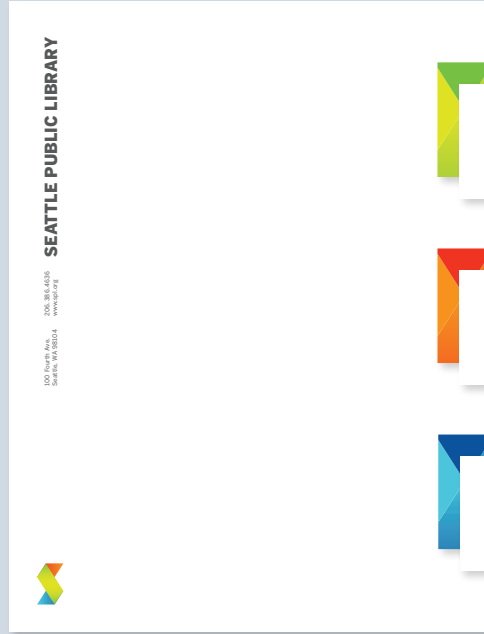
This card may be used to borrow materials from any location of the Seattle Public Library.



2 1236 6528 23442 5

Cardholder

In signing this card, I accept responsibility for all materials borrowed and agree to all library policies in effect.  
 206.286.4636 | www.spl.org



**SEATTLE PUBLIC LIBRARY**

100 Fourth Ave.  
 Seattle, WA 98104  
 206.286.4636  
 www.spl.org



**SEATTLE PUBLIC LIBRARY**  
**MARCELLUS TURNER**  
 City Librarian  
 1000 Fourth Ave.  
 Seattle, WA 98104  
 206.286.4647  
 ct@seattlepubliclib.org  
 www.spl.org

**SEATTLE PUBLIC LIBRARY**  
**JEFF CHRISTENSEN**  
 Direct Services  
 1000 Fourth Ave.  
 Seattle, WA 98104  
 206.122.4638  
 jchristensen@spl.org  
 www.spl.org

**SEATTLE PUBLIC LIBRARY**  
**LYNN PIGOTT MOWE**  
 Board Officer, President  
 1000 Fourth Ave.  
 Seattle, WA 98104  
 206.286.4330  
 lpmowe@seattlelib.org  
 www.spl.org



Seattle Public Library Rebrand