

2019+ Ram Factory Front Footwell LED Boards



2019+ DT Ram 1500
Lonestar, Bighorn, Sport, and Rebel Trims
(Equipped with factory front footwell LED lighting)

2019+ DJ/D2 Ram 2500/3500
Laramie, Longhorn, and Limited Trims

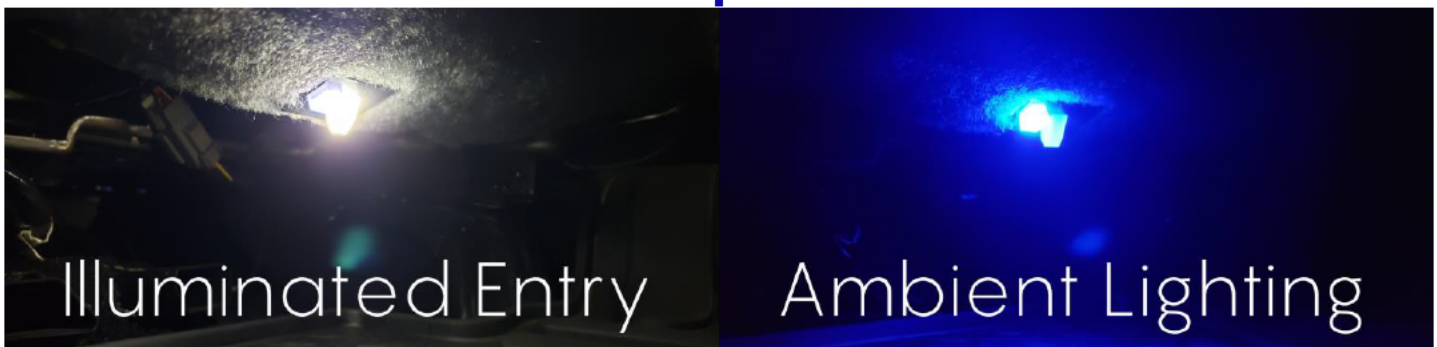
Product Features

-Paragoptics footwell lighting kits are designed to upgrade the factory footwell lighting to a brighter, brilliant color while preserving the factory integrity and functionality of your vehicle.

-Are you tired of being greeted by the yellow footwell lighting each time you open the doors to get into your vehicle? Good news is you don't have to settle for them anymore. With these footwell LED boards we ditched the factory yellow entry LEDs and replaced them with 21 Lumen 6200k cool white LED chips. These new LED chips provide a nice modern appearance along with an increase in brightness compared to factory. With the doors closed and headlights on, The entry LEDs turn off, and the ambient lighting LEDs remain on to provide vibrant color that enhances the driving experience while cruising around at night.

- Activates/deactivates when you open/close the doors of the vehicle

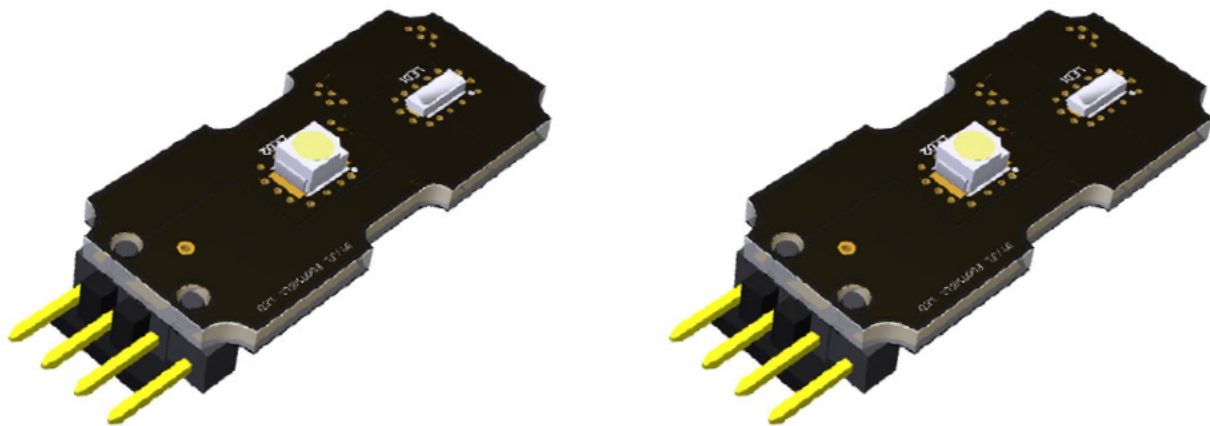
- Also activates/deactivates when you open/close the doors of the vehicle
- Activates when the headlights are on.
- Dimmable with factory switches (see page 7 for factory dimming controls)



Kit Contents

Replacement LED Boards & Hardware
(LED Housings are not included)

Factory Front Footwell LED Boards
QTY. (2)



!WARNING!

Take extensive care when handling all LED assemblies as they contain components that are sensitive to excessive shock, applied force, and direct contact with fluids. Failure to take precaution in handling LED boards during installation may result in part damage and/or failure.

Footwell LED Housing Removal

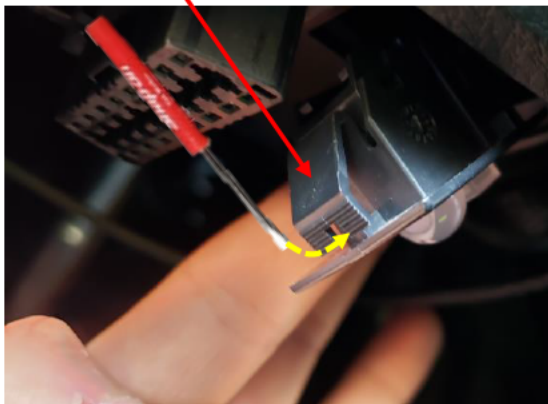
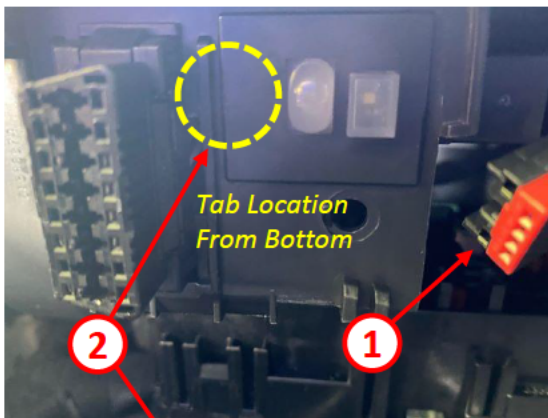


Front
Footwell LED
Housing

Tools Needed:

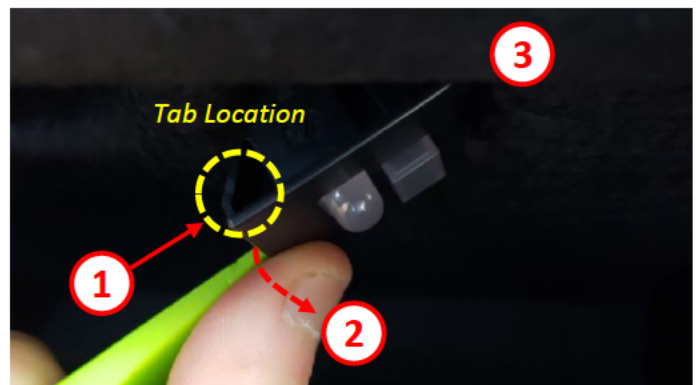
Plastic Trim Tool, Pocket screwdriver

Driver Front Footwell LED Housing Removal



1. Disconnect the wire harness connector from the footwell housing.
2. Using a pocket screwdriver depress the tab from the top side of the footwell LED housing, then remove the housing from the kick panel.

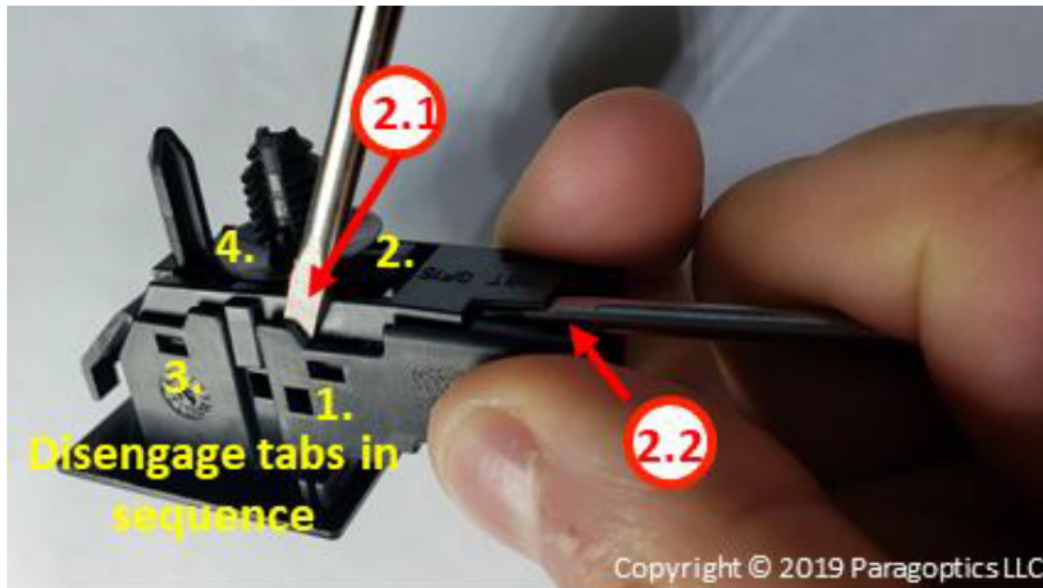
Passenger Front Footwell LED Housing Removal



1. Slide the end of your plastic trim tool between the closeout panel and the front of the footwell LED housing
2. Depress the indicated tab, then pull down on the Footwell LED housing to remove it from the closeout panel.
3. Disconnect wire harness connector

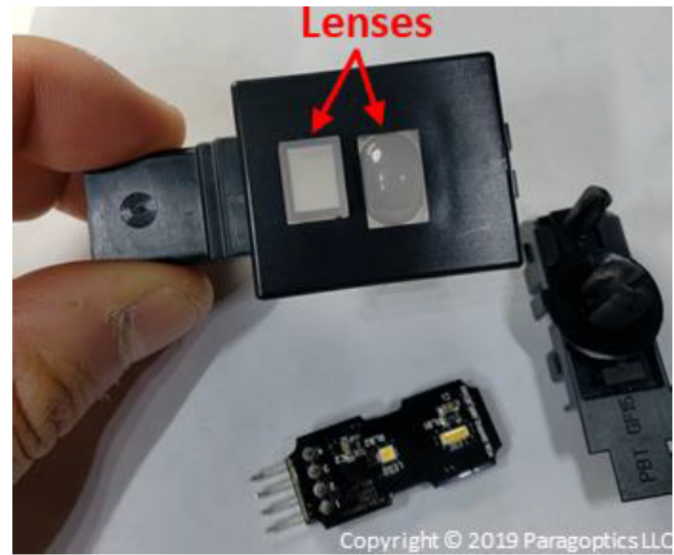
Footwell LED Board Removal And Installation

Tools Needed: 2 pocket screwdrivers.

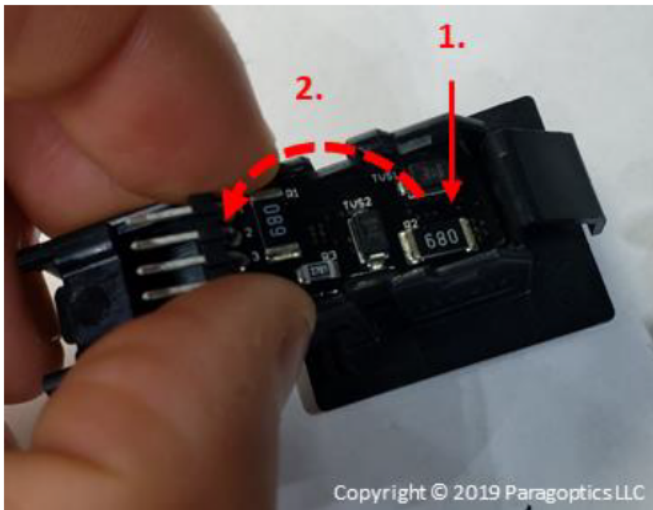


2.1 Using one pocket screwdriver CAREFULLY slide the end of the screwdriver between the lid and the housing to disengage tab (1.) shown above. **(Do not pry on the housing excessively as the corners of each tab are easy to break.)**

2.2 Once tab (1.) has been released gently lift on the lid of the housing using a second pocket screwdriver (as shown). Continue to hold steady pressure with the second screwdriver while you disengage the remaining tabs in sequence with the first pocket screwdriver. **(following this step will prevent the tabs from locking back in place while you disengage the rest of the tabs in sequence.)**



3. With your pocket screwdriver gently lift on the back of the LED board to loosen it. Remove the stock footwell LED board from the housing.
(Be careful not to lose the lenses when removing the LED board. If the lenses fall out of the housing don't worry, they can easily be re-installed)



4. Place the front of the LED board in the housing (1.) then press down on the back of the LED board until it bottoms out in the housing (2.)

5. Place the lid on top of the housing and firmly push down on the lid until all 4 tabs lock in place.

(Refer to next page for factory dimming controls)

Factory Dimming Controls

-The dimmer controls are inboard and adjacent to the headlight switch located on the left side of the instrument panel. The ambient lights will turn on each time you open the doors, unlock the vehicle, or turn the parking lights/ headlights on.

-From the factory, your Ram is equipped with one of the two headlamp switch designs pictured below. Identify which headlamp switch your Ram is equipped with and then read the operation procedures that follow

Headlamp switch types

Dual dimmer design



Dimmer Controls

1 - Ambient Light Control

2 - Instrument Panel Dimmer Control

With the parking lights or headlights on, rotating the right dimmer control **(2)** upward will increase the brightness of the instrument panel lights. Rotating the left dimmer control **(1)** will adjust the interior and ambient light levels.

Note:

The ambient lights will NOT come on if the Instrument Panel Dimmer(2) is set at the maximum upward setting. Rotate Instrument Panel Dimmer(2) downward 1 position before the maximum setting to turn on the ambient lighting.

Single dimmer design



Dimmer Controls

1-Instrument Panel/Ambient Light Dimmer Control

With the parking lights or headlights on, rotating the dimmer control **(1)** upward will increase the brightness of the instrument panel lighting and the ambient lighting simultaneously.

Note:

The ambient lights will NOT come on if the Instrument Panel/Ambient Light Dimmer (1) is set at the maximum upward setting. Rotate the Instrument Panel/Ambient Light Dimmer (1) downward 1 position before the maximum setting to turn on the ambient lighting.