

LEISURE AND TOURISM

by JTart | HKASP



TOP 100
WORLD'S
LANDSCAPE



LEISURE AND TOURISM

TOP 100 WORLD'S LANDSCAPE

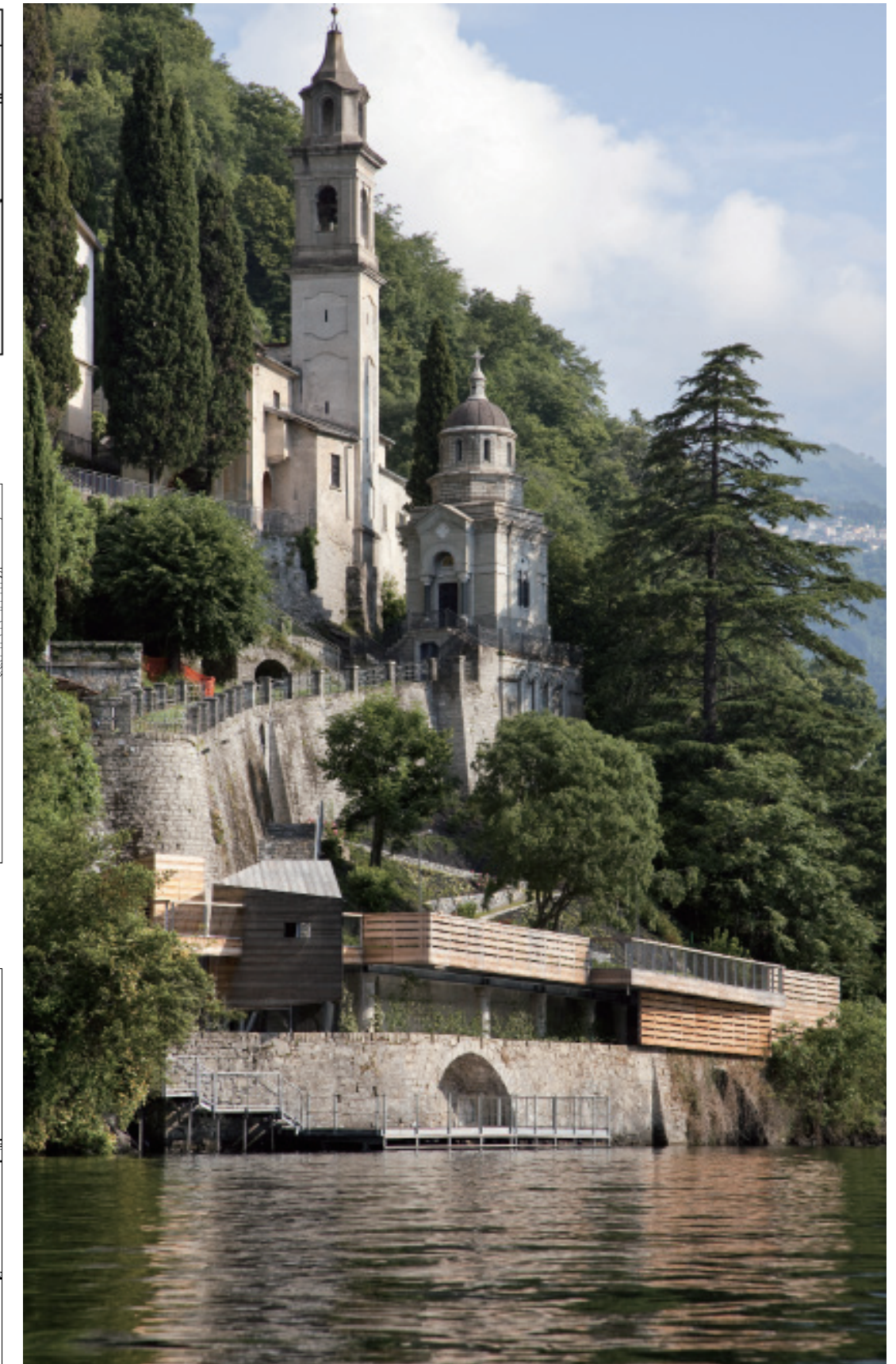
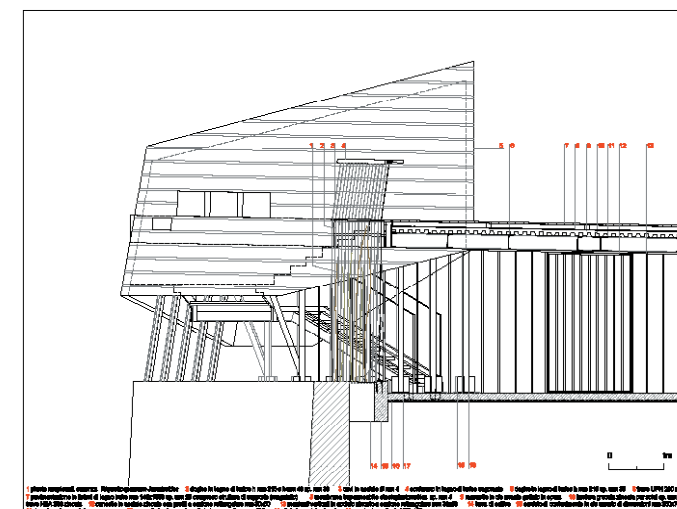
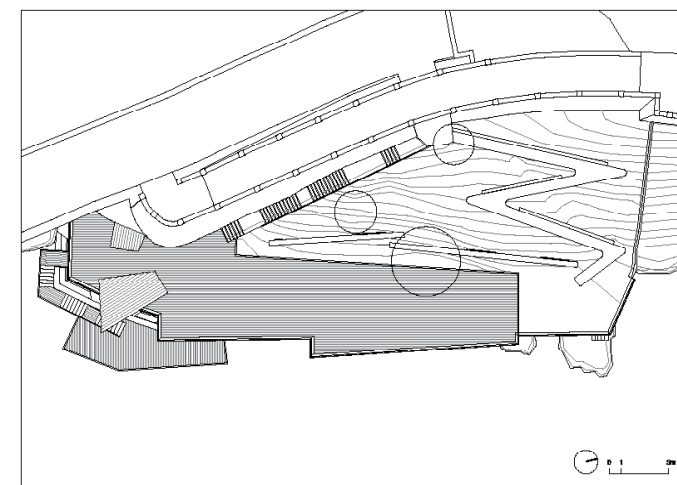
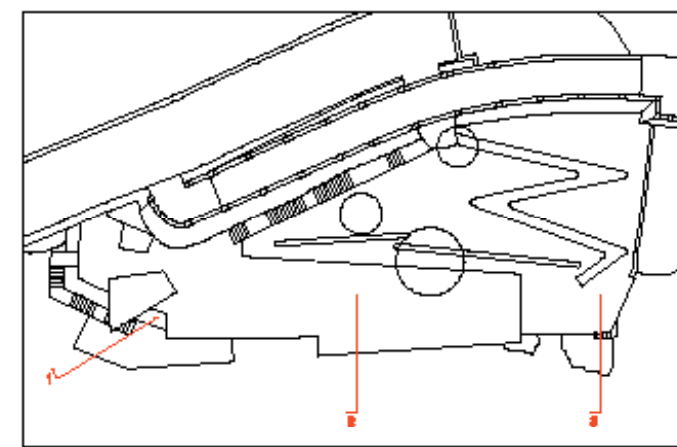
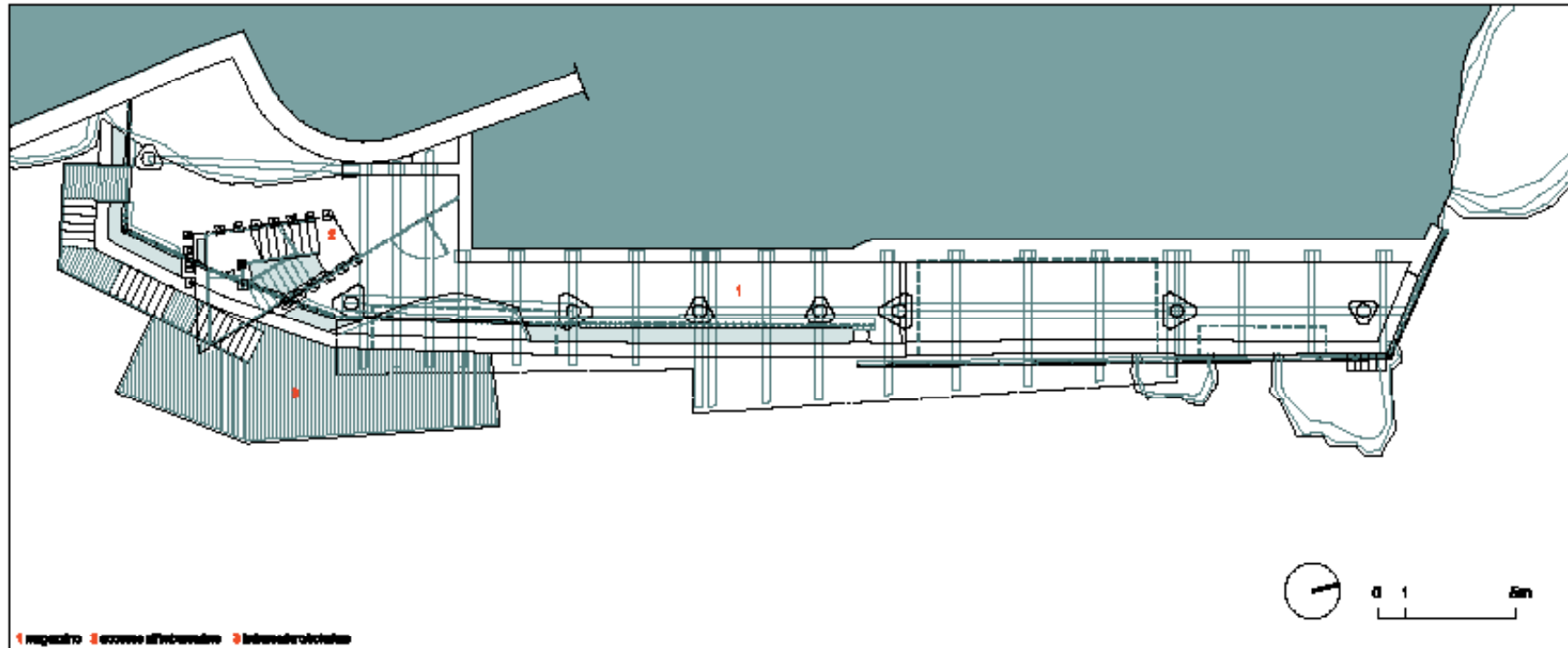
by JTart | HKASP

VIA REGINA PUBLIC GARDEN

Landscape Architects: Lorenzo Noè Studio
Team: Angelica Tortora, Marco Sessa, Chiara Zanetti, Linda Greco
Location: Brieno, Como, Italy
Photographer: Marco Introini

BACKGROUND

When you reach Brieno, you can still appreciate the dimension of a village on Como's lake shore. Unlike the other villages of the region, the territory has not suffered, during the last twenty years, neither for the sprawl, nor for bad restoration, probably because the main road passed through the houses, and Brieno has not turned into a tourist destination. In 2000 a by-pass gallery has been built. After that, the Municipality, instead of to pursue a regardless development policy, has devised to conserve the historical centre and to provide the village with a small parking and a square on the lake shore.



PROFILE

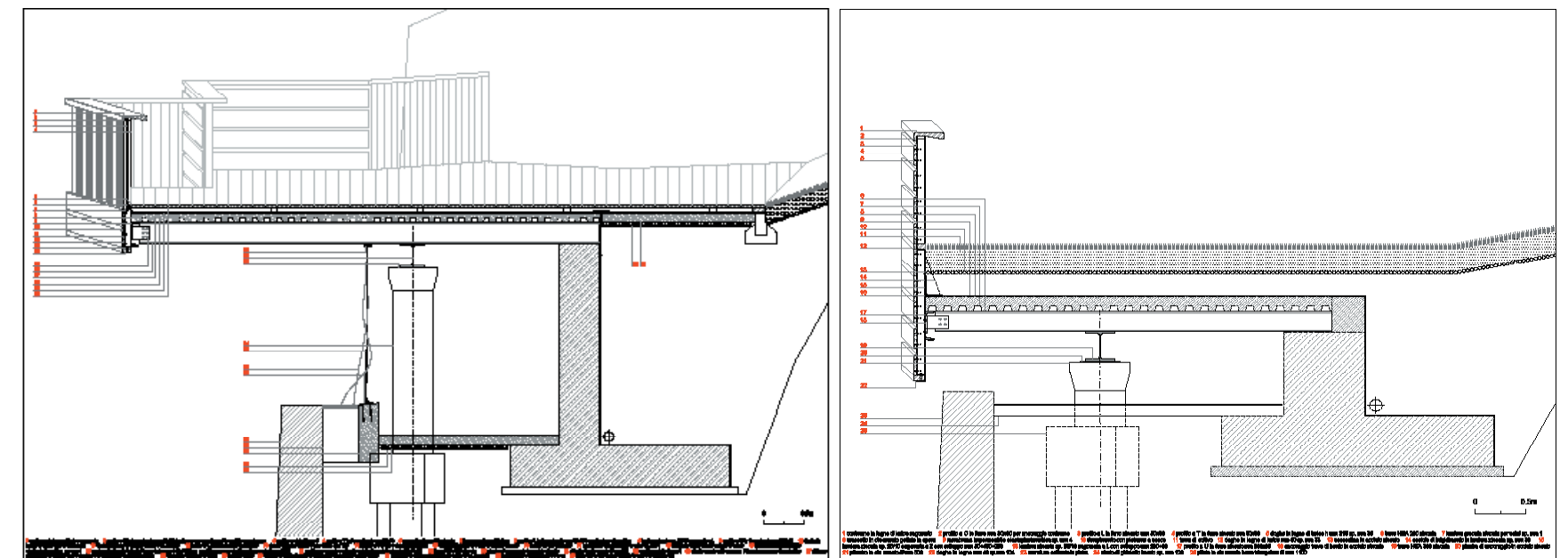
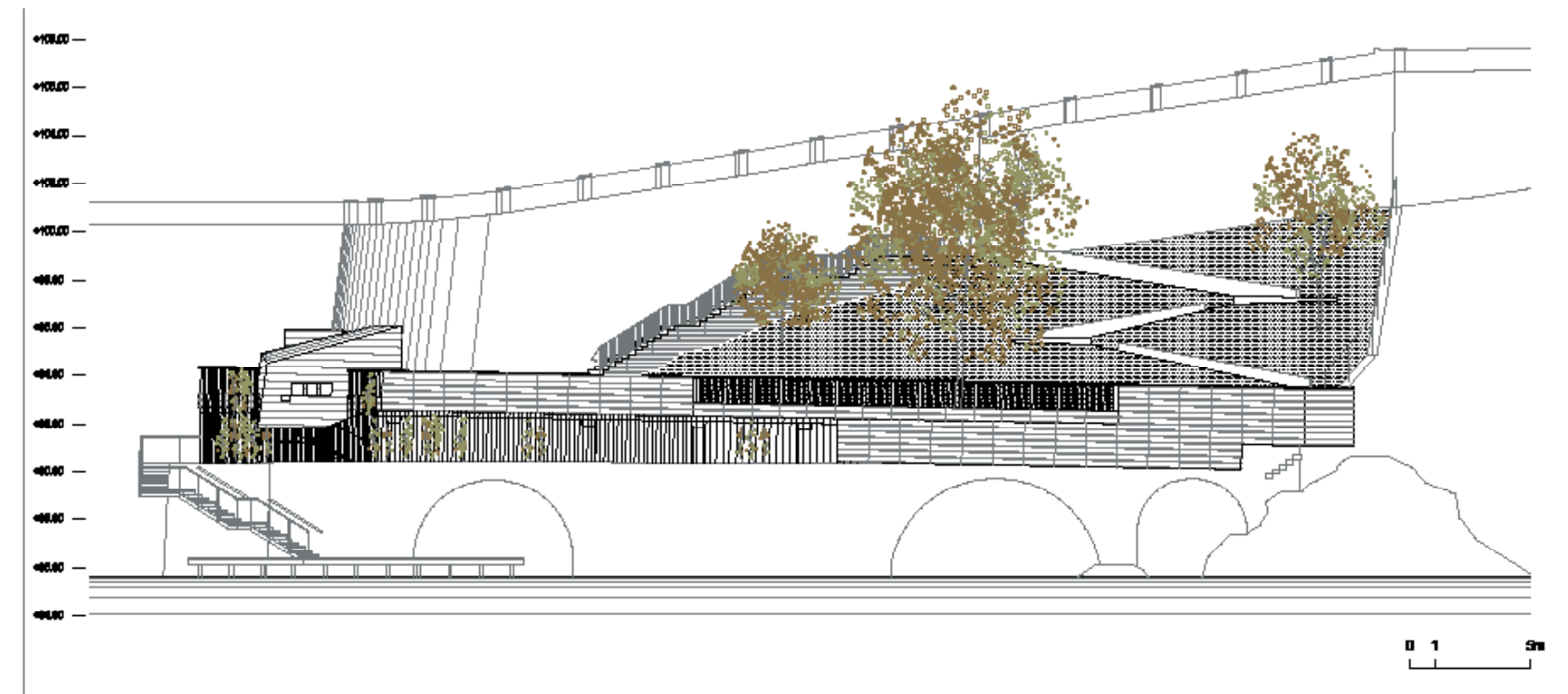
The design of these public works had to be respectful of the landscape and not expansive, and Lorenzo Noè and Gian Maria Bellasio - a structural engineer - were chosen in a public selection to project the square.

The site is northbound the centre, downstream the cemetery's church, built in the XVII century. Here a stone wall with three arches contains an embankment of about six meters in height over the average level of the water of the lake. The wall cannot be modified and it cannot bear ulterior loads.

ELEMENTS

To permit use of the escarpment a structure has been built over the lake, resting on recessed columns with individual foundations and micropiles for support below. The project is composed of a few elements: the stone staircase, the wooden deck and the landing stage. The surface of the plaza is slightly sloped toward the north, amplifying its sense of space and transforming it into a small stage that commands new views of the historical center and the opposite shore.

To the south, the park concludes with two wooden volumes: the rest rooms and the access staircase to the storage facility, and the dock for the boats. The space between the plaza and the previous ground level is bordered by steel cables that serve as supports for climbing plants.



COST CONTROL

Limited costs (of budget and maintenance), high landscape and historical value of the site and respect for the existing structure are approached not as limitations, but as stimuli for a sustainable design.

