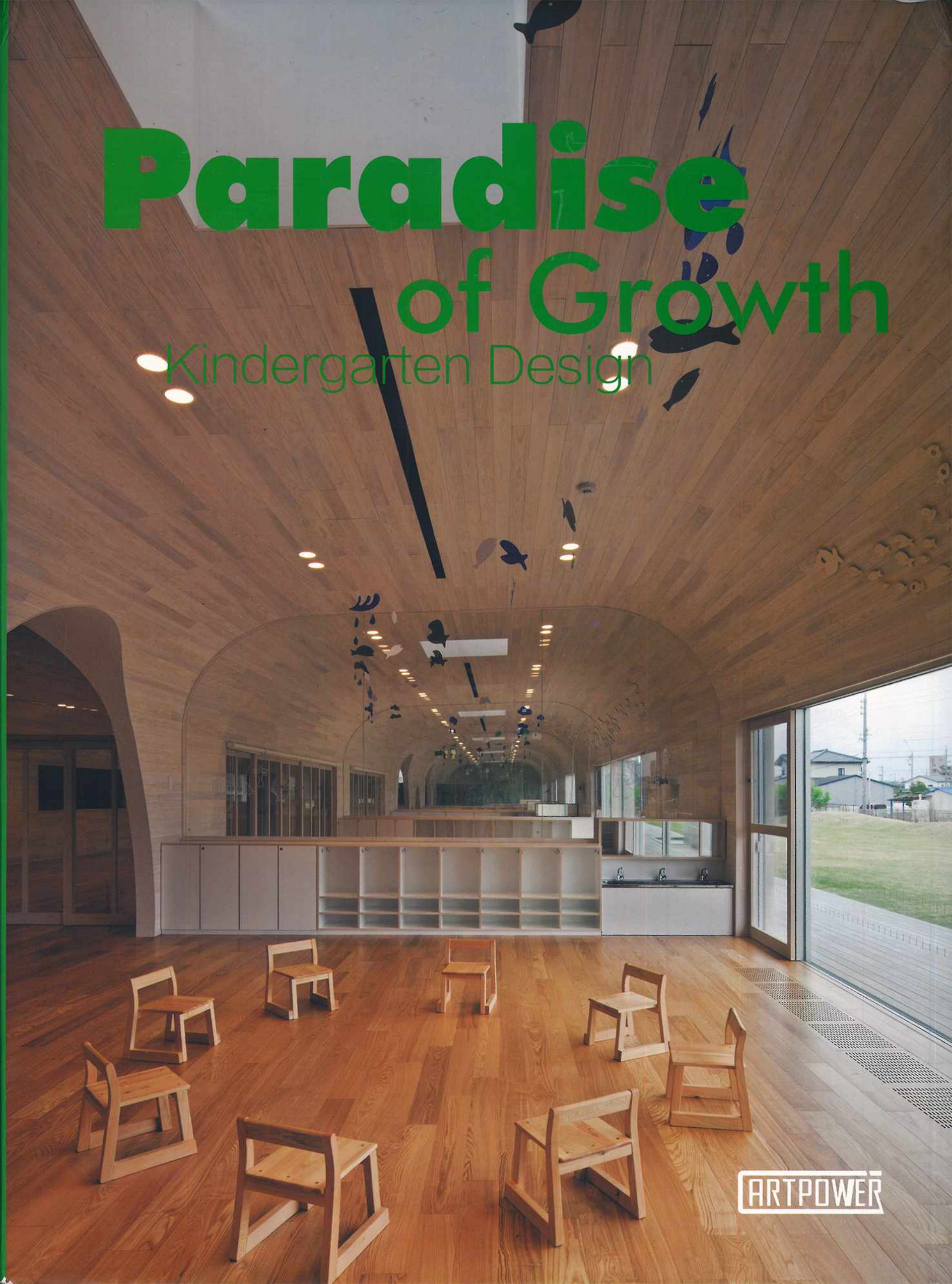


Paradise of Growth

Kindergarten Design



Paradise of Growth — Kindergarten Design

Copyright © Artpower International Publishing Co., Ltd.



Designer: Luo Xunjie
Chief Editor: Xia Jiajia

Address: Room C, 9/F., Sun House, 181 Des Voeux Road
Central, Hong Kong, China
Tel: 852-31840676
Fax: 852-25432396

Editorial Department:
13B, Zijing Ge, Fa Zhan Xing Yuan, No. 1, Mintian Road, Futian
District, Shenzhen, China
Tel: 86-755-82913355
Fax: 86-755-82020029

Web: www.artpower.com.cn
E-mail: artpower@artpower.com.cn

ISBN 978-988-68243-3-7

No part of this publication may be reproduced or utilised in any form by any means, electronic or mechanical, including photocopying, recording or by any information storage and retrieval system, without prior written permission of the publisher.

All images in this book have been reproduced with the knowledge and prior consent of the designers and the clients concerned, and every effort has been made to ensure that credits accurately comply with information applied. No responsibility is accepted by producer, publisher, or printer for any infringement of copyright or otherwise arising from the contents of this publication.

Printed in China

•CONTENTS•

Te Mirumiru

008

Kindergarten Lotte

022

Nursery in the
Jardines de Malaga
in Barcelona

032

Leimond-Shonaka
Nursery School

040

Nursery School La
Malpensata

050

The Leimond
Nursery School in
Sakado

056

Kindergarten Nido
Piccolo

114

Kindergarten
"Taka-Tuka-Land"

106

Azahar Children's
School

122

Wisdom Stars
Kindergarten

128

Nursery School
CEDEI_SESC

138

Kindergarten
Vimeteres

144

Lorenzo Noè Studio di Architettura

Nursery School La Malpensata



The layout of kindergarten is very simple. It is organized on a promenade, which runs for about 100 metres, from the glazed entrance hall to the garden.

On the north side we can find the main units, constituted of two rooms, one dressing space, and one bathroom. The bathroom borders the rooms, so the children will be safely able to learn by themselves how to use it.

On the other side we find the special rooms: dormitory, painting room and the room for physical activities.

This one is an involving space. Inside you feel like in a grotto with an ice floor. Outside the room looks like a space ship landed in the garden. Light gets in from eighteen portholes, set on the wall and on the vault at different levels, and it always changes during the day and the seasons.

The outer shell is made of copper sheets; the inner surface is covered with lime, contrasting with the floor made of resin.

There is always a straight connection

between classrooms and open spaces. In fact the school has a big garden on the south-west side and smaller gardens on the other side.

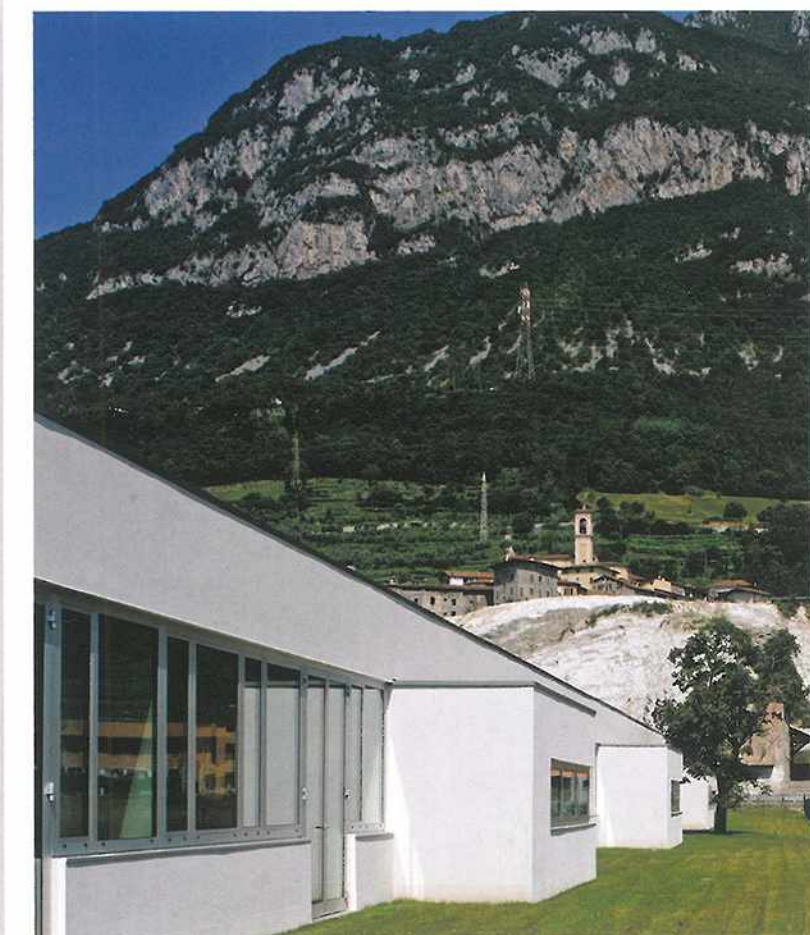
The natural light illuminates the inner spaces in different ways: the classroom's windows are conventional, the restroom's windows are ribbon and child-sight tall, and the dormitories' windows are high.

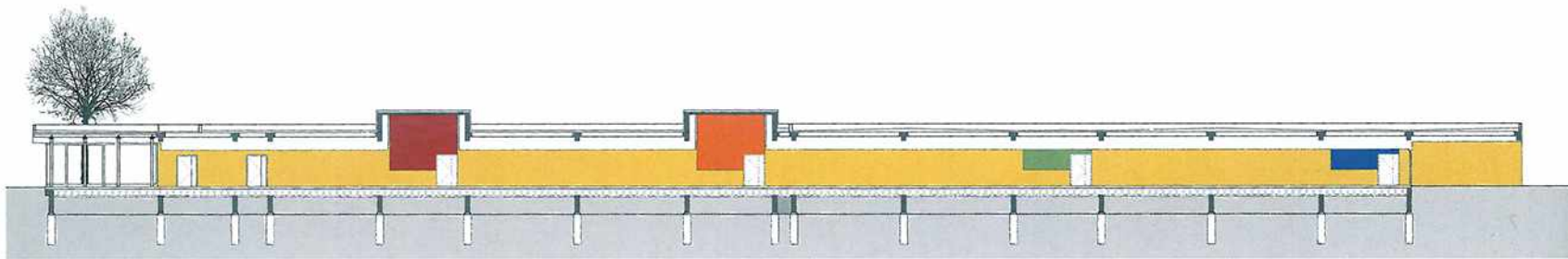
The inside promenade must seem like a motion-picture's sequence. After the entrance, glazed and bright, there is a shady corridor that brings to the section's classrooms which entries are lighted from on high.

The corridor toward the garden is glazed and looking out from this space it is possible to see the psychomotor classroom that, with its external shape, frames the panorama of historic centre.

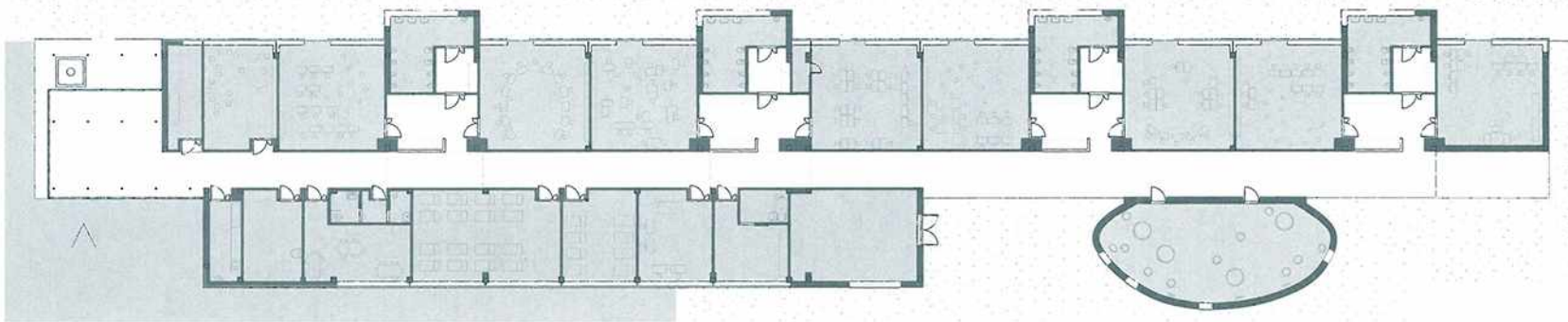
Color and Light

The classroom's partition walls and ceilings are painted with neutral colors that encourage the attention.





interior elevation



Entrance space and restrooms are painted with four colors: green, blue, red and orange.

The north wall of the inner promenade is yellow as the external wall that goes outside in the garden. The other external vertical painted surface is the south-west wall of the technological station.

The dormitory's surfaces are painted with different sky-blue: the ceiling's lights reproduce Pisces's and Cancer's constellations that induce sleep, as in the astrology's suggestion.

The kind of light's and color's experience that the designer looked for was multipurpose.

Rectangular and regular rooms contrast with involving spaces and the height of the ceilings changes continuously.

The straight space of the inner promenade meets the leisure room, rectangular, and the psychomotor classroom.

In the common garden can take place many activities that involve all the classes, whereas the smaller section's garden can be used as open air laboratories or kitchen gardens.

Structure

All the school's structures are designed to be resistant also during an earthquake. The main volume has a structure made by concrete pillars and beams.

Whereas the structure of the psychomotor classroom is made by steel shell-shaped portals, with a transversal secondary structure that supports the first layer of a wooden facing.

