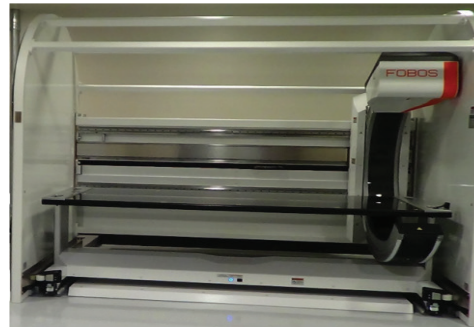




Portable/Mobile X-Ray
e.g. MinXray, Kubtec, Carestream



Whole Body X-Ray
e.g. Lodox, FOBOS



CT (Computed Tomography)
e.g. ImaTrex, GE

Imaging Technique Characteristics:

Portable / Mobile X-Ray

Whole-Body X-Ray

CT (Computed Tomography)

Produces 2D images (most common diagnostic imaging technique), typically used to view:

- Bone disease
- Degeneration
- Fractures
- Dislocations
- Infections
- Tumors

✓
✓
✓
✓
✓
✓

✓
✓
✓
✓
✓
✓

✓
✓
✓
✓
✓
✓

Produces 3D images - more sophisticated and powerful x-ray system that takes:

- 360 degree view
- Cross sectional view of the body
- ~3,500+ images

X
X
X

X
X
X

✓
✓
✓

...typically used to view very clear and detailed images of:

- Internal organs
- Spine
- Bones
- Soft tissue
- Stab wounds

X
X
X
X
X

X
X
X
X
X

✓
✓
✓
✓
✓

...to more easily diagnose:

- Cancer
- Heart disease
- Musculoskeletal disorders
- Trauma
- Infectious diseases

X
X
X
X
X

X
X
X
X
X

✓
✓
✓
✓
✓

Imaging Systems - Target Market:

- Forensic Pathologists - before performing an autopsy (1)
- Forensic Pathologists - instead of performing an autopsy (1)
- Coroner and Medical Examiner offices - when a forensic pathologist is not available (1)

✓
X
X

✓
X
X

✓
✓
✓

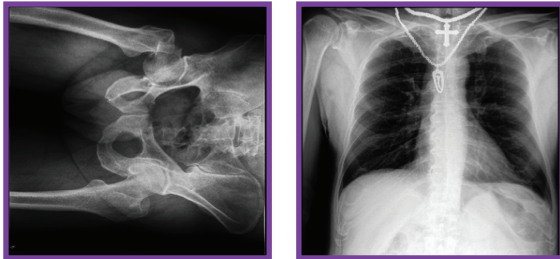
Virtual Autopsy Friendly (1)

X

X

✓

Portable/Mobile X-Ray



2D Images of Various Body Sections

Whole Body X-Ray

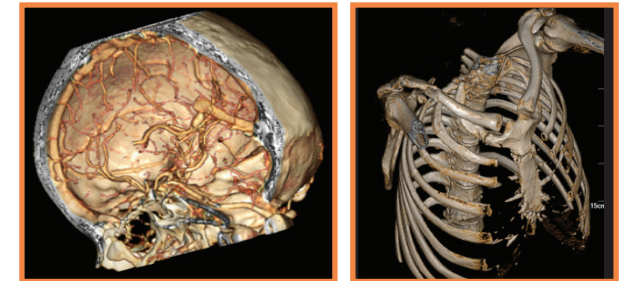


2D Image of Whole Body

CT (Computed Tomography)



2D Image of Whole Body



3D Images of Various Body Sections and/or Whole Body (2)



Cross Sectional Image