

Capture KENT COUNTY



A better state of care.

Understanding the unique health needs of our community is our business. At University of Maryland Shore Regional Health, we make sure that the health care you need is right here, close to home. Our network of physicians and providers work side-by-side with University of Maryland School of Medicine specialists to bring a higher level of expertise to the communities we serve across the Eastern Shore. You don't need to travel far for advanced care with a personal touch. It's here in your own backyard, just as it has been for more than a century. Better treatments and better outcomes.

That's a better state of care.

Learn more at umshoreregional.org.



UNIVERSITY of MARYLAND
SHORE REGIONAL HEALTH

Dr. Gina Exantus-Bernard,
UM Shore Medical Group - Pediatrics

CAROLINE | DORCHESTER | KENT | QUEEN ANNE'S | TALBOT

2022 Silver Sponsor



Photo credit: Sam Shoge, Shore Studios



Thank
You!

OUR SPONSORS 2022

Diamond Sponsor: Talkie Communications

Platinum Sponsor: PNC Bank
Think Big Networks, LLC

Gold Sponsor: Advisors Financial, Inc.
Atlantic Broadband
Dixon Valve & Coupling Company
Kent County, Maryland
KVN Partners
Shore United Bank

Silver Sponsor: ChesaDel Crier
Davis, Moore, Shearon & Associates, LLC
The Peoples Bank
University of Maryland Shore Regional Health
Washington College

Bronze Sponsor: Atlantic Security Inc.
Chesapeake Bank and Trust Company
David A. Bramble, Inc.
KRM Construction Company, LLC
KRM Development Corporation
Sears Hometown Store
Sparkle Pools, Inc.

Cover Image: Brian Palmer
Publication Design: Mullin/Ashley Associates
Publication Printing: Delmarva Printing

TABLE OF CONTENTS

Message from the President 3

Message from the Executive Director 5

About the Chamber 7

History 11

Economic Facts..... 15

Government 21

Communities 25

Arts..... 29

Business 33

Education 39

Healthcare 47

Places of Worship 53

Membership Business Category Listing 57

Index of Advertisers..... 89

Membership Application..... 91



MESSAGE FROM THE PRESIDENT

BRYAN MATTHEWS

On behalf of the Kent County Chamber and its community, we are pleased to present a reference guide to our Chamber members and visitors, as well as a comprehensive list of community programs and services. I would especially like to welcome our new members and thank the current members who have renewed their membership.

The Chamber takes pride in our efforts to promote, represent, and advocate for the businesses of Kent County. Our goal is to enhance the environment of the business community, help our businesses succeed and grow, and in doing so improve the quality of life and well-being of the residents and visitors of Kent County. Whether hosting events to connect members, advocating on behalf of county businesses, or providing opportunities to promote our members, we take your business seriously!

This has been a busy year for the Chamber, and despite the challenges and limitations imposed by COVID-19, our organization continued to grow and improve. We are better at communicating with our members and the community through e-newsletters, social media, email blasts, and our web presence. We are introducing new businesses through ribbon cuttings and Chamber Mixers. We are promoting community events like the BrewFest to create fun outlets, and the Pre and Post-Legislative Session Discussions to provide important information flow. We have taken steps to better advocate for our businesses and to provide meaningful events for the community.

We will continue to search for new ways to enhance member-related services, and to better serve the businesses of Kent County.

Regards,

Bryan Matthews

President

Kent County Chamber of Commerce

Photo credit: Tim Fields Photography

BUSINESS CATEGORY LISTING

Agribusiness	Land Trust
Animal Care	Landscape & Nursery
Apartments/Rentals	Legal Services
Arborist	Library
Architects	Lodging
Art Galleries/Dealers	Manufacturing
Automotive	Marinas
Building / Construction Materials & Supplies	Marine Services
Business Services	Marketing Services
Car Rentals	Media
Churches	Minority-owned
Cleaning Services	Moving/Storage & Supplies
Commercial Construction	Nonprofit Organizations
Commercial Printing	Party/Wedding Rentals
Communications	Personal Services
Computer Technology	Photographers
Consulting	Picture Framing
Contractors	Property Management
Distillery	Real Estate Services
Education	Recreation
Electric Companies	Recruiting Services
Energy Services	Recycling
Engineers	Restaurants & Food Services
Financial Services	Retail
Firearms & Gunsmithing	Retirement Community
Fitness	Roofing
Food Service	Sales & Service
Fulfillment	Security
Fundraising	Surveyors
Government	Transportation
Grocery Stores	Utilities
Health & Fitness	Warehousing & Transloading
Healthcare	Waste Removal
Healthcare – Mental Health	Wineries
Individual Members/Retirees	Women-owned
Insurance	



MESSAGE FROM THE EXECUTIVE DIRECTOR
SAMUEL SHOGE

Greetings and welcome to our 2021 – 2022 membership directory. Out of all the benefits associated with being a member of the Kent County Chamber of Commerce, our members report being published in the annual directory as one of the most popular benefits. We take pride in putting this publication together annually and are humbled by the advertising support we consistently receive—thank you.

This year’s publication features exciting changes. For the first time, we featured complimentary advertorials from advertisers to better share their organizations’ successes during the past year. We are looking forward to making this an annual tradition so our members have a more valuable platform to tell their unique story.

In addition, we’ve added a new section to the publication to highlight things to do around the county with children. Copies of our directory are available for the public to pick up in our office located in the Kent County Visitors Center and many copies were picked up by families who just moved to Kent County. We also published a comprehensive list of health department approved food trucks in Kent and Queen Anne’s Counties so our nonprofit and community organizations who put on our communities’ events we all love and adore, have ready access to a diverse list of food service providers to support their event.

These are but some of the many ways we are being responsive to our members and the community. We relish being a part of the Kent County community and our member organizations can always count on the Kent Chamber to be a strong advocate for business and a partner in uplifting our community.

In Service,
Samuel Shoge
Executive Director
Kent County Chamber of Commerce



CHAMBER OF COMMERCE

MISSION STATEMENT

The Kent County Chamber of Commerce will be the leading advocate for business in the County by serving our members in ways that enhance our business community, the quality of life, and the well-being of residents and visitors.



ABOUT THE CHAMBER

With more than 300 member businesses, nonprofits, and individuals, the Chamber is Kent County's premier business-to-business facilitator. Through our many unique programs, events, and advocacy, we provide a platform for leaders from the private, public, and nonprofit sectors to engage with each other to grow their respective organizations for the ultimate benefit of Kent County and its residents.

The Kent County Chamber of Commerce works tirelessly to build and maintain relationships with key leaders and stakeholders throughout multiple industry sectors and government on behalf of our members. By being the number one champion and advocate for business in Kent County, we provide our members with direct access to business decision-makers, thought-leaders, and elected officials to amplify their message so they can get the job done.

The Kent County Chamber of Commerce boasts a robust and highly engaged email subscriber list, offering members the very best value when it comes to marketing their business or organization. Advertisement e-blasts go right to the inbox of business leaders, presenting members with unprecedented access to the decision-makers that determine which businesses to contract with. Sponsors of the Chamber get the added benefit of being featured on all Chamber documents and marketing materials, showcasing their organization as a premier supporter of Kent County's business climate and quality-of-life.

Membership

Membership is open to all businesses, individuals, and nonprofit organizations in Kent and neighboring counties. The cost of membership is based on the number of employees and membership dues are billed annually on the anniversary date of the member.

Sponsorship

The Kent County Chamber offers members the opportunity to increase their recognition in the community with five levels of sponsorship. Sponsor benefits include a recognition plaque prominently displayed in the Chamber office, advertising and promotion at all Chamber events, recognition in all Chamber communications tools, advertising discounts in our publications, tickets to Chamber events, and promotional links on our website.

The Kent County Chamber of Commerce was founded in 1928 as the Kent County Business Men's Association. The Association was incorporated in 1958 and evolved into the Kent County Chamber of Commerce. Today the Chamber is the leading advocate for business in the County, serving our members in ways that enhance our business community, the quality of life and the well-being of residents and visitors.

Sponsorships levels:

Diamond	\$5,000
Platinum	\$3,000
Gold	\$2,000
Silver	\$1,000
Bronze	\$500

For details and information about sponsorship benefits call the Chamber office at **410-810-2968**.

Photo credit: Steven G. Atkinson, ShoreTideFun Photography

CHAMBER MEMBERSHIP HAS ITS BENEFITS

1. BUSINESS REFERRALS

The Chamber office receives requests for information on availability of goods and services from local businesses every day. We gladly give referrals and recommend ONLY our Chamber members!

2. PUBLICATIONS

The Chamber promotes our members and sponsors in our annual Kent County Membership Directory and County Map publications. The member listings are also published on the Chamber’s website with members’ email and website addresses when available.

Both of these publications present a wonderful opportunity to purchase an ad that will be seen all year by residents of and newcomers to Kent County.

3. PRESS RELEASES

We spread the good news of our members by publishing press releases from our member to our website and through our newsletter.

4. MONTHLY NEWSLETTER

We publish a monthly newsletter which provides information of interest to Chamber members. The Newsletter is distributed via email and is available on the Chamber website. Reminders keep members aware of important, time-sensitive events and topics.

5. BROADCAST EMAIL SERVICE - E-BLASTS

In an effort to help you build your business and get your message out efficiently and cost effectively, the Chamber office will send an email specifically on your behalf to all Chamber members who have signed up for our mailing list. This is an excellent way to announce new products, services, or events. As a Chamber member, you can take advantage of this service at a very reasonable cost. Please contact the Chamber office for further details.

6. CHAMBER WEBSITE – INTERNET EXPOSURE

All members are listed on the Kent County Chamber of Commerce website in the online directory. Your address and website are established as links from the Chamber’s site, which can mean an increase in customers.

7. SCORE MENTORING

The Chamber provides members with direct access to SCORE mentors who are uniquely qualified to help with any aspect of your business at *no cost* for as long as you need them. Seasoned professionals from diverse business backgrounds can help you launch a new business or grow your existing business. Your relationship with SCORE can last just a few sessions or a number of years, based on your needs.

8. BUSINESS DISPLAY

Display of your materials in the Chamber Resource Area of the Visitors Center is available to Chamber members for free.

9. RIBBON CUTTING & OPEN HOUSES

We conduct Ribbon Cutting ceremonies and Open Houses to announce new Chamber members or the relocation of current members.

10. PROUD MEMBER LOGO

The Chamber has created a “Proud Member” logo that is available digitally and can be used for just about any advertising or promotion for your business; an added value that we know will help grow your customer base. Use this logo in your business print ads, direct mail, business cards, web sites, email blasts, promotional items, and much more! The logo lets your client base know that you are proud to be a Kent County Chamber of Commerce member.

11. MEMBER-TO-MEMBER BENEFITS PROGRAM & MEMBERSHIP CARD

The Chamber issues Membership Cards to Chamber members that work in conjunction with the Chamber’s Member-to-Member Benefits Program that promotes buying local to support member businesses.

Member businesses that participate in this program offer discounts or specials to other Chamber members presenting their Membership Card, with current year identification, in advance of their purchase. Even if you do not offer a discount, as a Chamber member, you may take advantage of the discounts offered by fellow members. This allows members to save some money while supporting local businesses. If you wish to have an offer listed, contact the Chamber office at **410-810-2968** or **director@kentchamber.org**.

12. SPECIAL EVENTS

We hold networking events such as business-after-hours and breakfasts to showcase our member businesses. Members that attend these events are provided opportunities to network and promote their business. Together with SCORE, we host educational seminars on topics of interest to local businesses. Annually, we sponsor the Pre and Post-Legislative Session Discussion to keep our members informed on current events.

13. COMMUNITY EXCELLENCE AWARD PRESENTATION

We recognize the county’s best businesses, nonprofits, and leaders at our annual Community Excellence Award event.

14. BULK MAILING PRIVILEGES

The Chamber offers exclusively to its members the use of its Bulk Mail Permit. For detailed information on using the Bulk Mail Permit, please contact the chamber office at **410-810-2968** or **director@kentchamber.org**.

15. MEMBER MAILING LABELS

The Chamber’s membership list is available on labels for a small fee to any interested Chamber member.

16. BUSINESS ANNIVERSARY RECOGNITION

We celebrate our members who are celebrating business anniversaries ending in ‘0’ or ‘5’ by presenting them with an official Certificate of Recognition from the Kent Chamber and Kent County Economic Development.



Board Members – 2022

Executive Committee:

Barbara Foster, President
Meghan Livie, Vice President
Karyn Dustin, Treasurer
Bryan Matthews, Past-President

Board Members:

Steven Atkinson
Zane Carter
Genevieve Croker
Karyn Dustin
Barbara Foster
Joseph Goetz
Sarah King
Meghan Livie
Jim Luff
Bryan Matthews
Kevin Shearon
Kate Van Name

Chamber of Commerce Leadership 2022

President – **Barbara Foster**,
Sumner Hall (G.A.R. Post #25, Inc.)

Vice President – **Meghan Livie**,
The Peoples Bank

Treasurer – **Karyn Dustin**,
Chesapeake Bank and Trust
Company

Past President – **Bryan Matthews**,
KRM Development Corporation

Executive Director – **Samuel Shoge**

Kent County Chamber of Commerce

122 North Cross Street
P.O. Box 146
Chestertown, MD 21620

Phone: 410-810-2968

director@kentchamber.org
www.kentchamber.org



KENT COUNTY

1642

The year Kent County was founded.

KENT COUNTY

HISTORY

In 1706, the Maryland General Assembly pressed for the establishment of a “New Town” along the Chester, where trade could be centralized, warehouses built, and customs collected – and Chestertown was founded. In the 1730’s, Kent County became a center of colonial economic activity, as the first Maryland county to diversify, turning from tobacco to a grain-based economy, and the shortest route from the Virginia Colony to points north. George Washington really did sleep in Kent County. Other famous visitors included Thomas Jefferson, Patrick Henry, and James Madison.

Chestertown became an international port. Locally built ships, known for their sleekness and speed, were particularly useful for sailing along the coast, from New England to the Caribbean Islands. Craftsmen moved into the town, as did powerful planter merchants who built their mansions along the river. Respectable brick homes lined the streets. Chestertown was not only a center of economic activity, but of colonial culture. The wealthy enjoyed balls, horse races, a gentlemen’s club, and traveling theatre troupes.

The labor force in the 1600s was largely supplied by indentured servants. By the late 1600s, captured Africans began to be imported and sold as slaves. In the transition from tobacco to less labor-intensive wheat, slaves were sometimes freed, as it was often cheaper to hire people during planting and harvest. Quakers, who had abandoned slavery in the 1770s, led the moral outrage against slavery. An abolitionist society was formed in Chestertown in the late 1700s, and a free black population established itself. Washington College was founded in 1782 - the 10th oldest college in America, and the first college in the United States. By 1790 Chestertown was the geographic center of the American population.

But as land opened up to the west, Baltimore became the preeminent port, and by 1800, Kent County wheat and other products were shipped across the Bay. Although prosperity continued, the heyday of international trade was over in Kent County. The free black population continued to expand, and black owned businesses joined in the prosperity. Although the number of slaves continued to decrease, slavery remained a constant. The underground railroad had “guides” in Kent County, and a number of slaves managed dramatic escapes to freedom. On the eve of the Civil War, political tension grew. Southern sympathies were strong,

Photo credit: Sam Shage, Shore Studios

Did you know?

Although the first English settlement in Maryland was established in 1631 on Kent Island, once part of Kent County, it wasn’t until the 1650’s that Colonists settled in present day Kent County, (bounded by the Chesapeake Bay, the Chester and the Sas-safras Rivers), on Eastern Neck Island ... primarily focused on tobacco production.



Photo credit: Steven G. Atkinson, ShoreToBeFun Photography



KEEP MOVING FORWARD

Looking to start, advance or expand your career? Chesapeake provides a pathway to build a great resume. Prepare for your next opportunity with Chesapeake's flexible and affordable credit classes and workforce training.

Learn how we can help get you there at www.chesapeake.edu

 **Chesapeake College**
Your time. Your place. Your path.

We Make Building an Art Form.

 **BLUE HERON CONTRACTING**

*Whether It's a Renovation, New Home, Custom Cabinetry or Millwork
Call Blue Heron Contracting for
Stunning Work on a Competitive Budget*



*Quality Craftsmanship,
No Matter What Size the Project*

410-810-3850
114 South Cross Street,
Chestertown, Maryland

MHIC #127862 Torr Howell, Owner

but local white leaders cautioned strongly against secession, a certain path to economic ruin. Even those who were pro-union, however, were also largely anti-abolition. Eastern Shore men fought on both sides of the war, truly brother against brother in many cases. Hundreds of Kent County black men served, many of them escaping slavery by steamships that went up and down the bay recruiting union soldiers.

The steamship era played a key role in the local economy through the 1800s and into the 1900s, transporting local goods and produce across the Bay, and often returning with tourists. The Victorian resorts of Betterton and Tolchester became two of the most popular destinations on the Chesapeake into the 1960s.

In the late 1800s the railroad enhanced the ability of local farmers to send produce north. Transportation and technology along with canning and refrigeration, boosted the fishing industry, and Rock Hall became a major hub of the Chesapeake seafood industry.

For African Americans the burden of Jim Crow laws replaced that of slavery. Nonetheless, they continued to play an integral role in Kent County life. In Chestertown, African American performance venues attracted nationally known performers and regional audiences throughout the 1950s and 60s, bringing a vibrancy that would otherwise have been lacking in town life.

To this day, agriculture plays a dominant role in the economy. Watermen continue to ply their trade, although pollution of the watershed and Bay has reduced their numbers enormously. Several decades ago a preservation effort began in Chestertown that led

Photo credit: Tim Field Photography



to the creation of a National Landmark Historic District that boasts more historic homes in use than any Maryland community except Annapolis. Preservation has also saved many of the historic

country homes, a number of them lived in by the same families for centuries.

The County retains its sense of community. Local businesses know residents by name, and support the County's nonprofit organizations that

also serve the community. There is a tremendous sense of place in Kent County, and an understanding that the history of this region is integral to both its present, and its future.

We focus on you, so you can

FOCUS

on what matters most!

Use our innovative and convenient services to keep your business growing!

Online & Mobile Banking
Remote Deposit Capture
Visa Debit Cards • Wire Transfers
ACH Origination • Merchant Services

Switch to Shore United Bank today!

899 Washington Avenue
Chestertown, MD
410.810.0591



Shore United Bank
Maryland • Delaware • Virginia

ShoreUnitedBank.com | 877.758.1600 | **MEMBER FDIC**

2022 Gold Sponsor



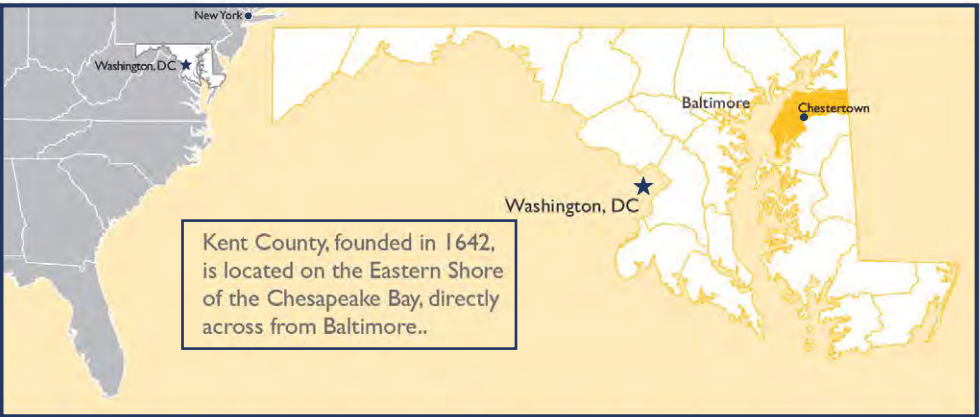
KENT COUNTY
\$643 MILLION
2019 Private sector economic output

KENT COUNTY
ECONOMIC FACTS

Information presented by the Maryland Department
of Commerce Brief Economic Facts

Kent County, founded in 1642, sits directly east of Baltimore and the Chesapeake Bay with Washington DC 50 miles to the southwest and Philadelphia 60 miles to the northeast. The county is located within 90 minutes of three international airports and three major seaports. Route 301 links Maryland to Delaware thus making the county a prime location for warehouse and distribution operations and commercial transportation. The county's private sector industries generate over \$770 million in gross regional product.

With its diverse business landscape, affordable land, and low cost of living, it is a great place for businesses and new residents. Kent County is one of only five counties in Maryland with no business personal property tax and offers sales & use exemption for qualified datacenters. It has put significant investment into its open-access fiber broadband availability becoming one of the most connected counties in the state



while encouraging the growth of diverse businesses such as datacenters, call centers, cyber security, telemedicine, training, and education centers.

Kent County is ideal for emerging technologies including environmental, aquaculture, and agriculture businesses, with over 134,000 acres of farmland, 265 miles of tidal shoreline, and proximity to federal labs and research centers. For more information visit www.kentcounty.com/business

LOCATION

Driving distance from Chestertown:	Miles	Kilometers
Atlanta, Georgia	692	1,113
Baltimore, Maryland	64	103
Boston, Massachusetts	381	613
Chicago, Illinois	747	1,202
New York, New York	170	274
Philadelphia, Pennsylvania	81	131
Pittsburg, Pennsylvania	283	456
Richmond, Virginia	173	279
Washington, DC	76	122

CLIMATE AND GEOGRAPHY¹

Yearly Precipitation (inches)	44.1
Yearly Snowfall (inches)	16.4
Summer Temperature (°F)	75.3
Winter Temperature (°F)	35.7
Days Below Freezing	89.5
Land Area (square miles)	278.3
Water area (square miles)	25.3
Shoreline (miles)	343
Elevation (ft)	sea level to 102

POPULATION^{2,3}

	Kent County Households	Kent County Population	Upper Eastern Shore*	Maryland
2010	8,175	18,671	235,623	5,773,552
2020	7,850	18,130	240,130	6,074,750
2030**	8,600	19,340	261,360	6,413,690

*Caroline, Cecil, Dorchester, Kent and Talbot counties
**Projections
Selected places population (2010): Chestertown 5,252; Rock Hall 1,310; Galena 612; Millington 605; Butlertown 505

POPULATION DISTRIBUTION^{2,3} (2019)

Age	Number	Percent
Under 5yrs	995	4.9
5 - 19 yrs	3,436	17.0
20 - 44 yrs	5,503	27.2
45 -64 yrs	5,866	29.0
65 and over	4,397	21.8
Total	20,197	100.0

Photo credit: Madison Berlen Photography

LABOR AVAILABILITY^{3,4,5} (BY PLACE OF RESIDENCE)

Civilian Labor Force (2019 avg.)	County	Labor Mkt. Area*
Total civilian labor force	10,205	135,965
Employment	9,796	130,715
Unemployment	409	5,250
Unemployment rate	4.01%	3.86%
Residents commuting outside the county to work (2015-2019)	Number 3,938	Percent 43.2%
Employment in selected occupations (2014-2018)		
Management, business, science and arts	3,526	37.9
Service	1,851	19.9
Sales and office	2,019	21.7
Production, transp. and material moving	1005	10.8

*Kent, Caroline and Queen Anne's counties, MD, and Kent County, DEK.

MAJOR EMPLOYERS^{6,7} (2020-2021)

Employer	Product/Service	Employment
Washington College	Higher education	435
Dixon Valve & Coupling	Valves and couplings	381
LaMotte	Chemical testing equipment	256
University of Maryland Shore Regional	Medical services	225
USA Fulfillment	Promotion fulfillment	210
David A. Bramble	Paving and road constr.	191
Heron Point of Chestertown	Nursing care	180
Kent Center	Services for the disabled	172
Gillespie & Son and Gillespie Precast	Concrete products	151
Angelica Nurseries*	Plants and flowers	136
YMCA Camp Tockwogh*	Recreation facility	130
Waterman's Crab House*	Restaurant	85
Haven Harbour*	Marina	85
Peoples Bank	Banking services	80
Chester River Yacht & Country Club*	Yacht and country club	71
Resorts at Chester River Manor	Nursing care	68
The Molly's Group	Retail and restaurant	61
Eastman Specialties	Plasticizers, synthetic oils	52
98 Cannon Riverfront Grille	Restaurant	55
Georgetown Yacht Basin	Marina	47
Living at Home Health Services	Nursing care	36
CreaFill	Cellulose Fiber Mfg	36

Excludes post offices, state and local governments, national retail and national foodservice; includes higher education

EMPLOYMENT⁴ (2019)

Industry	Estab-lishments	Annual Avg. Empl.	Empl. %	Avg. Wkly. Wage
Federal Government	11	61	0.77	\$986
State Government	7	256	3.22	850
Local Government	16	757	9.52	878
Private Sector	685	6,876	86.48	790
Natural resources and mining	32	276	3.47	883
Construction	73	471	5.92	936
Manufacturing	24	910	11.45	1,032
Trade, Transportation, and utilities	137	1,323	16.64	651
Information	6	41	0.52	845
Financial activities	46	262	3.30	1,080
Professional and business services	97	496	6.24	1,296
Education and health services	97	1,863	23.43	756
Leisure and hospitality	94	986	12.40	431
Other Services	77	248	3.12	610
Total	801	7,951	100.00	801

Includes civilian employment only

HOURLY WAGE RATES⁴ (2020)

Selected Occupations	Median	Entry	Skilled
Accountants	\$30.58	\$19.83	\$38.99
Aerospace engineers	\$21.14	\$16.76	\$24.98
Bookkeeping/accounting clerks	\$20.44	\$14.64	\$24.62
Computer systems analysts	\$26.31	\$15.11	\$33.82
Computer user support specialists	\$19.15	\$12.80	\$24.51
Customer service represenatives	\$17.11	\$13.17	\$20.27
Electrical engineers	\$48.24	\$32.05	\$66.19
Freight, stock and material movers	\$13.83	\$11.66	\$16.85
Industrial truck operators	\$16.88	\$13.37	\$19.06
Information security analyst	\$43.80	\$22.83	\$53.27
Inspectors, testers, sorters	\$18.11	\$13.22	\$23.04
Machinists	\$26.81	\$20.36	\$30.10
Maintenance workers, machinery	\$20.90	\$16.50	\$24.46
Mechanical Engineers	\$35.05	\$26.64	\$39.89
Network support specialists	\$30.09	\$25.27	\$34.07
Packaging/filling machine operators	\$13.61	\$11.53	\$15.60
Packers and packagers hand	\$15.28	\$11.76	\$18.34
Secretaries	\$18.24	\$13.37	\$21.98
Shipping/receiving clerks	\$16.95	\$13.14	\$19.70
Stock clerks and order fillers	\$12.24	\$11.19	\$14.94
Team assemblers	\$16.56	\$13.52	\$19.05

Wages are an estimate of what workers might expect to receive on the Upper Eastern Shore (Caroline, Dorchester, Kent, Queen Anne's and Talbot counties) and may vary by industry, employer and locality

SCHOOLS AND COLLEGES^{3,8}

Educational Attainment - age 25 & over (2015-2019)		
High school graduate or higher	88.63%	
Bachelor's degree or higher	35.13%	
Public Schools		
Number: 3 elementary; 1 middle/comb.; 1 high		
Enrollment: 1,812		
Cost per pupil: \$14,989		
Students per teacher: 11.7		
High school career / tech enrollment: 359		
High school graduates: 116		
Nonpublic Schools Number: 8		
Higher Education (2019)	Enrollment	Degrees
2-year institution		
Chesapeake College*	1,904	301
4-year institutions		
Washington College	1,089	317

*A regional community college serving residents of Kent County; main campus is located in adjacent Queen Anne's County

TAX RATES⁹

	Kent County	Maryland
Corporate Income Tax (2021)	none	8.25%
Base – federal taxable income		
Personal Income Tax (2021)	3.20%	2.0-5.75%
Base – federal adjusted gross income		
*Graduated rate peaking at 5.75% on taxable income over \$300,000		
Sales & Use Tax (2021)	none	6.0%
Exempt – sales for resale; manufacturer's purchase of raw materials; manufacturing machinery and equipment; purchases of materials and equipment used in R&D and testing of finished products; purchases of computer programs for reproduction or incorporation into another computer program for resale		
Real Property Tax (FY 22)	\$1.012	\$0.1120
Effective rate per \$100 of assessed value		
In an incorporated area, a municipal rate will also apply		
Business Personal Prop. Tax (FY 21)	none	none
Rate per \$100 of depreciated value		
No county personal property tax on ordinary business property		
\$2.555/\$100 applicable to utility-scale electricity generating equipment only		
In an incorporated area, a municipal rate may apply		
Major Tax Credits Available		
Enterprise Zone, Job Creation, More Jobs for Marylanders, R&D, New Jobs, Biotechnology and Cybersecurity Investment, A&E District		

INCOME³ (2015-2019)

Distribution	Percent Households		
	Prince George's Co.	Maryland	U.S.
Under \$25,000	18.8	13.10	19.20
\$25,000 - \$49,999	25.2	17.00	21.20
\$50,000 - \$74,999	14.6	15.30	17.20
\$75,000 - \$99,999	10.6	13.20	12.70
\$100,000 - \$149,999	16.4	19.00	15.10
\$150,000 - \$199,999	6.8	10.50	6.80
\$200,000 and over	7.7	12.70	7.70
Median household	\$58,598	\$84,805	\$62,843
Average household	\$86,130	\$111,417	\$88,607
Per Capita	\$36,813	\$42,122	\$34,103
Total income (millions)	\$719	\$245,697	\$10,699,831

HOUSING^{2,3,10}

Occupied Units (2015-2019) (69.20% owner occupied)	
Housing Transactions	
Units Sold	433
Median Selling Price	\$332,523

*All multiple listed properties excludes auctions and FSBO

BUSINESS AND INDUSTRIAL PROPERTY⁶

Industrial sites in the county range in size and price, depending on location and infrastructure. Wireless broadband is available.

Radcliffe Creek Business & Professional Park - Located on Route 291 in Chestertown with campus-style professional and industrial buildings.

Chestertown Business Park - Located on High Street in the heart of Chestertown with campus-style professional, industrial and manufacturing buildings.

Interstate 301 Industrial Area - Easy access to MD Route 301 near the town of Millington and less than 20 miles south of Middletown, DE.

Kent County is home to many diverse businesses such as, oyster farms, wineries, hydroponic farms, professional services, biotechnology, manufacturing, restaurants, and healthcare. The county welcomes clean industrial development and agriculture, biomedical, and technology partners.

Market Profile Data (2019)	Low	High	Average
Land – cost per acre			
Industrial	\$50,000	\$160,000	\$122,500
Office	\$115,000	\$173,000	\$144,000
Rental Rates – per square foot			
Warehouse / Industrial	\$6.00	\$8.00	\$7.00
Flex / R&D / Technology	\$6.00	\$8.00	\$7.00
Class A Office	\$12.00	\$17.00	\$14.00

TRANSPORTATION

Highways: U.S. 301 and MD 213

Rail: Maryland & Delaware Railroad Company with access to Norfolk Southern Railway; Amtrak passenger service provided in Wilmington, Delaware approximately 60 miles from Chestertown

Truck: More than 100 local and long-distance trucking establishments are located on the Upper Eastern Shore

Water: Served by the Port of Baltimore, 50' channel; a leading U.S. automobile and break-bulk port; seven public terminals including the state-of-the-art Intermodal Container Transfer Facility

Air: Served by Baltimore/Washington International Thurgood Marshall Airport (BWI), approximately 64 miles from Chestertown, and Philadelphia International Airport (PHL), approximately 72 miles from Chestertown; Massey Aerodrome (3000' turf runway) is approximately 19 miles from Chestertown

RECREATION AND CULTURE

Parks: Nine county parks; in addition, Eastern Neck National Wildlife Refuge, Chesapeake Farms, Turner's Creek and the Sassafra River Natural Resource Management Area appeal to nature lovers

Recreation: Public beaches, marinas, county-owned landings, private yacht clubs, fishing charters and other boat charters provide opportunities for water-related activities; hunting of geese, ducks, deer and upland game, fishing and paddling are other recreational pastimes

Attractions: 18th and 19th century buildings, several museums, and open landscapes that complement Kent County's Chesapeake Country National Scenic Byway, Star-Spangled Banner Trail, and Maryland certified Stories of the Chesapeake Heritage Area

Arts & Entertainment District: Chestertown

Events: Tea Party, Taste of the Town, National Music Festival, River Arts Studio Tour and Show, Music in the Park, Chestertown Antiques Show and Sale, Historic Chestertown House Tour, Sultana Downrigging, Dickens of a Christmas, and HP Festival in Chestertown; Rock Hall's Pirates & Wenches Weekend, Rock Fish Tournament, FallFest and Rock Hall Crawl New Year's Eve Celebration; Betterton Day; Galena Dogwood Festival; Massey Air Show; and the Kent County Fair

UTILITIES

Electricity: Delmarva Power and Choptank Electric Cooperative, Inc.; customers of investor-owned utilities and major cooperatives may choose their electric supplier

Water: Municipal systems in Betterton, Chestertown, Galena, Millington and Rock Hall; county systems serve Edesville, Fairlee, Kennedyville, Millington and Worton

Sewer: Municipal systems in Betterton, Chestertown, Galena, Millington and Rock Hall; county systems serve Edesville, Fairlee, Galena, Kennedyville, Millington, Quaker Neck, Rock Hall, Tolchester and Worton

Telecommunications: Verizon Maryland, BridgeMAXX, Delmarva Wifi, AT&T, Sprint, Thinkbig Networks, Tidewater Wifi and others; cable provided by Atlantic Broadband; satellite TV provided by Direct TV

GOVERNMENT¹¹

County Seat: Chestertown

Government: Three commissioners elected at large for four-year terms; code home rule government allows for broad local legislative authority

P. Thomas Mason, President, Board of County Commissioners
410.778.4600

Shelley Heller, County Administrator 410.778.4600

Website: www.kentcounty.com

Kent County Economic & Tourism Development:

Jamie L. Williams, Director

400 High Street, 3rd Floor

Chestertown, Maryland 21620

Telephone: 410.778.0416

Email: econdev@kentgov.org

www.kentcounty.com/business

Sources:

1 National Oceanic and Atmospheric Administration (1981-2010 normals); Maryland Geological Survey

2 Maryland Department of Planning

3 U.S. Bureau of the Census

4 Maryland Department of Labor, Office of Workforce Information and Performance

5 U.S. Bureau of Labor Statistics

6 Kent County Economic and Tourism Development

7 Maryland Department of Commerce

8 Maryland State Department of Education; Maryland Higher Education Commission

9 Maryland State Department of Assessments and Taxation; Comptroller of the Treasury

10 Maryland Association of Realtors

11 Maryland State Archives; Maryland Association of Counties

CHESTERTOWN Business Campus



It's been an exciting and busy four years for **KRM Development**, **KRM Construction**, and the **Dixon Group** as the three entities collaborated to create the Chestertown Business Campus (CBC). Together as a team they envisioned, designed, developed, and constructed three beautiful buildings meant to stand the test of time. Working with planners and architects to create the vision and design of the new Dixon Headquarters, Distribution/Training Center, and Manufacturing Center was a labor of love, as this is where the global operations of the Dixon Group will live for many years to come. The Dixon Group employs 360 people in Chestertown, and over 1600 worldwide.

Infrastructure for Growth

The three Dixon buildings are just the beginning of the Chestertown Business Campus. The infrastructure is designed and built to provide for additional commercial buildings that can attract new businesses and jobs to Chestertown. We look forward to the CBC growing over the years and helping Chestertown, Kent County and the region prosper.

Working together with the leaders of the YMCA of the Chesapeake, Dixon and KRM are thrilled to see this come to fruition. This is a fantastic facility and will be a wonderful addition to the Chestertown and Kent County community.



World Trade Center • 401 E. Pratt Street • Baltimore, MD 21202
Telephone: 410.767.6300 • TDD/TTY: 410.333.6926

888-246-6736 | commerce.maryland.gov



KENT COUNTY GOVERNMENT

Kent County is governed by a three-member Board of Commissioners, elected by the public for four-year terms. Kent County is a “code county” meaning that the County has adopted the optional powers of home rule as provided under Article XI-F of the Maryland Constitution.

The Commissioners strive to be responsive to the needs and concerns of its citizens. The Commissioners are committed to the creation of accessible, affordable, robust, and high capacity internet access to meet the technological needs of today, tomorrow, and in the future.

The Upper Shore Regional Council

The Upper Shore Regional Council (USRC) is a regional planning and development agency for Cecil, Kent & Queen Anne’s counties. The mission of the USRC is to foster physical, economic and social development and to improve the quality of life on Maryland’s Upper Shore Region. Projects focus on agricultural, technological and economic improvements in the region.

The USRC ‘s members include elected officials from Cecil, Kent, and Queen Anne’s Counties, municipalities, and members of the Maryland General Assembly. For more information contact the USRC Office at **410-810-2124**, email **soneill@kentgov.org**, or visit **www.usrcmd.org**.

Kent County Office of Economic Development

Kent County Economic Development promotes activities that seek to enhance the business community, the services and income opportunities available to residents, as well as the social well-being and quality of life for all members of the county. We take pride in our economic diversity by hosting and providing opportunities for various industries to grow and prosper. With over 130,000 acres of agricultural land, 265 miles of shoreline, and located in close proximity to major US highways, Kent County’s location has been a strategic asset for many of our industries while providing the rural lifestyle that many desire. Kent County Economic Development supports existing and new businesses in growth and prosperity, focusing on improving the County’s business climate. The importance of a healthy business environment is critical to maintaining the quality

Photo credit: Mullin/Ashley

Our Vision — Kent County Government

To ensure accountability to the County’s citizens for the delivery of essential services consistent with our mission statement.

The County Commissioners may meet on Tuesday evenings at 6:00 p.m., but shall meet at least two Tuesdays each month, or at other times. The public is encouraged to attend. Agendas and minutes for each meeting are published on the Kent County website: **www.kentcounty.com/government**.



Photo credit: Steven G. Atkinson, ShoreToBeFun Photography

of life the County has enjoyed for over 400 years. Economic Development coordinates with public and private organizations for sustainable economic growth. For more information, contact the Economic Development Office at **410-810-2168**, or visit **www.kent-county.com/business**.

Kent County Office of Tourism Development

As the marketing arm of Kent County, the mission of the Tourism Office is to increase visitation to the County, through advertising, social media, media relations, content development,

public relations and internal marketing support to tourism related organizations, attractions and businesses. Its vision is for Kent County to be a tourism destination that primarily utilizes and is compatible with its existing character, heritage, natural resources and its way of life. The Office works closely with the Kent County Tourism Advisory Board and the State Office of Tourism in the creation, development and implementation of communication strategies. For more information please contact the Tourism Development Office at **410-778-0416**, or visit the Kent County website at **www.kentcounty.com**.

Photo credit: Robert Percock Photography



A wide array of Kent County
Business Support Services
are right at your fingertips...



Business Directory



Startup Resources



Commercial Property Search



Workforce Development



Funding / Incentives



Promotion & Media Outreach



LEARN MORE AT
KENTCOUNTY.COM/BUSINESS



2022 Gold Sponsor

2021 KENT COUNTY CHAMBER OF COMMERCE
**COMMUNITY EXCELLENCE
AWARD WINNER**



Rebuilding Together Kent County

Congratulations to Rebuilding Together Kent County for being a 2021 Kent County Chamber of Commerce Community Excellence Award Winner!

The Kent Chamber is proud to present Rebuilding Together Kent County with a Community Excellence Award for the way they have touched the lives of many here in Kent County. Providing critical home repairs to those in need, Rebuilding Together Kent County has replaced roofs, installed handicap-accessible ramps, and provided other repairs that allowed Kent County residents to remain in their homes. These repairs have also allowed the residents to maintain equity in their homes. Because the equity in one's home is often the only source of wealth for many, the work Rebuilding Together Kent County does also has the added benefit of preserving housing equity in our community.



Wayne Rickert, Executive Director



KENT COUNTY
5 TOWNSHIPS
... are the number of incorporated municipalities.

KENT COUNTY
COMMUNITIES

Chestertown - County Seat

Chestertown was chartered in 1706 and was once a bustling Royal Port of Entry for the colonies. Today it is a National Historic Landmark district where brick side-walks are lined with Georgian, Federal and Victorian homes and independently owned shops and restaurants. The town is home to Washington College, the 10th oldest liberal arts college in the United States, and the records in the county court house are the oldest in the State, dating to the 1640s.

Chestertown draws families and retirees who want to experience small town living and a rich cultural life on the Eastern Shore. Visitors from across the country enjoy strolling, gallery-hopping, shopping, and dining in the charming Historic District. Boaters can now enjoy the totally renovated municipal marina on the Chester River, just two short blocks from the heart of downtown.

The Town knows how to throw great parties: thousands come to Chestertown each Memorial Day weekend to re-live colonial history at the Chestertown Tea Party Festival, one of a half dozen annual festivals that also include the National Music Festival, African American Legacy Day, Downrigging Weekend, The Chestertown Jazz Festival, the HP Fest of wizarding, and Dickens of a Christmas. And every Saturday, the award-winning Farmers Market fills Fountain Park with fresh vegetables, flowers, baked goods and more!

Millington

The Town of Millington is located a short distance from the Delaware State line. Records dating back to 1672 or earlier identify this area as “Head of Chester”. It was named Millington in 1818 when the Town of Bridgetown, on the Kent side of the river, was merged with Sandtown, on the Queen Anne’s County side. One of the mills for which the town was named, built in 1763, still stands. Not without its tragedies, Millington experienced several devastating fires. One in 1904 destroyed more than 100 structures. And in 1918 water rose from a broken dam and flooded portions of the town. Misfortune notwithstanding, Millington continues to thrive. Visitors enjoy peaceful visits to restored Victorian homes with winding gardens on tidy streets and pathways.

A wonderful sense of community exists throughout Kent County, created by the eclectic mixture of families who have lived here for generations, and newcomers who have moved into their midst.

The word ‘neighbor’ means more than just the person who lives next door. Kent County has many small, rural towns and villages, with five major communities.



Photo credit: Steven G. Atkinson, ShoreToBeFun Photography

Photo credit: Sam Stage, Shore Studios

Building Careers in Kent County Since 1976

Your Future Starts Here:

- Manufacturing
- Distribution & Logistics
- Engineering
- Information Systems
- Customer Service & Sales
- And Much More!

Uncommon Excellence • Uncommon Excellence • Uncommon Excellence • Uncommon Excellence

DIXON
The Right Connection®

US Manufacturer
1 Dixon Square
Chestertown, MD 21620
dixonvalve.com

2022 Gold Sponsor

Rock Hall

Rock Hall, also known as the ‘Pearl of the Chesapeake’ is a working watermen’s town. It is a popular destination for pleasure boaters and has spectacular views of the Bay. Twelve miles south-west of Chestertown on Route 20, it was originally known as Rock Hall Cross-roads, established in 1707. Washington, Madison and Jefferson traveled through Rock Hall often. Since water routes were often the safest routes to travel, it was an important port for packets bringing people from the South and Western Shore to inland routes headed north to Philadelphia and New York. For over 300 years, locals have earned their living from the water. The town museum in the municipal building and the Watermen’s Museum next to Haven Harbour Marina offer a closer view of Rock Hall’s history. Nature lovers enjoy the abundance of wildlife on Eastern Neck Island, a federal wildlife refuge since the 1960s. Rock Hall’s Ferry Park affords some of the most splendid sunsets in the area.

Betterton

Betterton, located on the north end of the county where the Sassafras River meets the Chesapeake Bay, dates back to 1664 when it was called Fish Hall. In

1715, Mr. Edward Crew leased the property for one ear of corn and changed the name to Crew’s Landing. Then, in 1851, William Townsend Turner named the town after the family of his wife, Elizabeth Betterton. In 1870, the location began to draw wealthy patrons from Washington and Newport who would travel by steamboat and stop on their way to New York and Boston. Expensive and extravagant hotels offered accommodations for the wealthy and the popularity of Betterton continued to grow. In 1906, the town of Betterton was officially incorporated. The town’s popularity continued to 1930, when restaurants, taverns, dance halls, bowling alleys, and amusement arcades all helped create the town’s resort image. After 1930, the popularity declined as fewer steamboats made the trip.



Photo credit: Sam Shog, Shore Studios

Today, there is no better place to lounge on the beach, fish, or swim in the nettle-free waters. Visitors can stop by and see the Victorian homes or tour the Betterton Heritage Museum to learn about the town’s rich history. Residents and visitors alike enjoy the beautiful view, good food, and lively conversation at Barbara’s on the Bay and can also be found grabbing a pizza, sub, or salad at Marzella’s. Seasonal residents who come back year after year say that the beauty and serenity of Betterton makes it a charming place to live.

Galena

A small rural town located at the cross-roads of Maryland Routes 213 and 290, Galena’s history dates back prior to the Revolutionary War. The town was founded in 1763 as Downes Crossroads, a name derived from Mr. William Downes, a local businessman who owned a tavern frequented by George Washington. In the early nineteenth century, the town was renamed Georgetown Crossroads. When Galena ore was discovered in a local, silver mine, the town once again underwent a name change and became known as Galena. Galena has become known as the antiques center, embracing new businesses that help maintain that growth at an even pace. Life in Galena is pleasant and quiet with family and community being fundamental to its existence.

Know

working together makes a community better.

A community that works together achieves together. That’s why PNC is proud to be part of the Kent County Chamber of Commerce.

Call Heather McClay
410-778-6110
heather.mcclay@pnc.com
pnc.com

PNC BANK
for the achiever in you®

©2021 The PNC Financial Services Group, Inc. All rights reserved.
PNC Bank, National Association. Member FDIC.

2022 Platinum Sponsor

2021 KENT COUNTY CHAMBER OF COMMERCE

COMMUNITY EXCELLENCE AWARD WINNER



Minary’s Dream Alliance

Congratulations to Minary’s Dream Alliance, Incorporated for being a 2021 Kent County Chamber of Commerce Community Excellence Award Winner!

The Kent Chamber is proud to present Minary’s Dream Alliance with a Community Excellence Award for their outstanding contributions to the Kent County community during the past year. From ensuring young children having the ability to enjoy an Easter egg hunt during COVID-19 to preparing meals for first responders, Minary’s Dream Alliance touched the lives of many. Most notably, MDA rallied an entire community to deliver 200 bags of groceries to homebound seniors during the height of the pandemic.



Co-Founders Doncella Wilson and Paul Tue



KENT COUNTY ARTS

Kent Cultural Alliance

The Kent Cultural Alliance (formerly the Kent County Arts Council) serves the residents of Kent County supporting and creating inclusive artistic and cultural experiences designed to connect communities through shared conversations. It is the vision of the Kent Cultural Alliance that all residents of Kent County engage in important civic and social conversation using artistic and cultural experiences as a conduit for connection. The KCA provides competitive grant funding for nonprofit arts organizations, community groups and independent artists. In 2021 the KCA will open its new Vincent & Leslie Prince Raimond Cultural Center as a hub for artistic and cultural exchange and featuring a year-round visiting artist residency program. For more information please go to www.kentculture.org.

Garfield Center for the Arts at the Prince Theater

The Garfield Center for the Arts at the Prince Theatre's mission is to invigorate the cultural life of our community by nurturing, celebrating and supporting arts and artists through performance and education. Their vision is a community where arts and artists thrive, are accessible, and are an essential element of life. The building at 210 High Street, known first as the New Lyceum and later as the Prince Theatre, operated as a movie house for most of its history. In 2002, the Prince Theatre Foundation Inc was established as a Nonprofit organization and was renamed to the Garfield Center Foundation Inc in 2012.

The Garfield Center produces a variety of entertainment and educational programming throughout the year, including self-produced live plays and musicals, theatre camps for kids, educational outreach programs, and live music events featuring local, regional and national artists. Partnering with over a dozen community organizations for fundraising and other events that benefit us all, the Garfield Center is recognized and valued as a unique community and cultural center for the arts on the Upper Eastern Shore. To learn more about the GCA, visit www.garfieldcenter.org.

Photo credit: Steven G. Atkinson, ShoreToBeFun Photography

Kent County's diverse offerings draw a wide audience: art and music lovers, heritage and eco-tourists, day-trippers, week-enders, romantic retreaters, families, and outdoor enthusiasts. Our serene natural environment, vibrant cultural life, well-preserved historic district, and small town charms combine to create a remarkable quality of life on Maryland's Eastern Shore. Along an enchanting stretch of coastline with historic small towns, rolling farmlands, scenic wildlife preserves, and bustling marinas, residents and visitors can enjoy museums, galleries, boutiques and gift shops, concerts, farmers' markets, and restaurants offering Chesapeake Bay cuisine at its best.

RiverArts

With a mission to grow community, creativity, and connection through the Arts, RiverArts is a hub for artists, art lovers, and the art-curious from our local community and beyond. Since 2012, RiverArts has been an active and growing part of the lively Kent County arts scene. Anchored by monthly exhibits in the main Gallery on High Street and online in a virtual viewing room, and a full calendar of annual arts events including Paint the Town, the Studio Tour, and the winter Holiday Show, RiverArts is also home to a myriad of Arts related programs and activities for people of all ages, with robust online programs, activities, and shopping opportunities as well as in person programs in Chestertown.

KidSPOT, RiverArts’ children’s creativity center, serves children and families through free drop-in arts exploration sessions, enrichment programs offered both independently and through the local public schools, Arts Summer Camps, guided “Kids in the Gallery” tours, KidSPOT Craft Bag giveaways, and collaborations with other community organizations. ArtsAlive offers classes for teens and adults at all levels and in an array of mediums and techniques, weekly Salon discussions on interesting topics with local luminaries and thinkers as special guests, hosts groups for arts enthusiasts including photographers, life drawing artists, and plein air painters. The RiverArts Clay Studio offers all kinds of ceramics classes, special events, and provides equipment, studio space, and a warm and vibrant community of area potters.

The Mainstay

The Mainstay is a 501(c)(3) nonprofit dedicated to the arts and serving Rock Hall and the surrounding region having the mission of invigorating the cultural experience of Eastern Shore life by presenting outstanding musical programming and providing a setting for creativity, inquiry and conversation. The Mainstay programs a diverse offering of concerts by local, regional, national, and international musicians at a reasonable ticket price. Including our weekly Mainstay Monday series, the Mainstay is programming 100+ concerts each year. The Mainstay is especially proud of its reputation for jazz excellence dating back to our early association with jazz great Charlie Byrd.

The 125 (mismatching) seat room is cozy, quirky, and intimate and offers a near perfect listening experience without a bad seat in the house. The Mainstay is continually growing in its programming reach and vision, and is increasingly proving to be one of the best places to see a concert in all of the Mid-Atlantic.

The National Music Festival

he National Music Festival brings together inspiring mentors and the next generation of gifted musicians, providing education, scholarships and affordable, adventurous public performances. The Festival, a division of OuterArts Maryland, Inc., combines world-class mentor musicians and gifted pre-professional apprentice musicians for an intense Festival experience the first two weeks of each June. All apprentices receive full scholarships and housing in private homes. The two groups rehearse and perform side by side in orchestral, chamber, solo recital, choral

and chamber opera repertoire. In two weeks, these musicians present over 30 concerts and over 200 free open rehearsals for music lovers from around the world. Each year the Festival serves approximately 110 apprentices and employs approximately 30 mentors (including the Artistic and Executive Directors, who also teach). Musicians come to the Festival each year from more than 15 countries and 30 U.S. states. The average age of apprentices is 22, although some are older and have already completed their advanced degrees and have begun their careers.

Chestertown Arts & Entertainment

Chestertown’s Arts & Entertainment District was certified in 2015 under a program administered by the Maryland Department of Commerce and the State Comptroller’s Office. The District encompasses 51 acres of the historic downtown area, stretching from the Chester River waterfront to Mill Street. It offers state and local tax abatements for qualified artists who create and sell their creative works in the District and for property owners who build or renovate structures for qualified arts purposes.

The A&E designation highlights the importance of the visual, performing and literary arts to the Chestertown community and their positive impact on quality of life. Arts patrons visit downtown galleries and performing arts venues to be entertained, enlightened, challenged and inspired. They stay to dine in downtown restaurants and cafes, shop in independently owned boutiques, stroll historic tree-lined streets, and explore the natural beauty of the Chester River.

KENT AND QUEEN ANNE’S COUNTIES
FOOD TRUCKS

Kent County

- Aretha’s Creative Touch arethascreativetouch@gmail.com
- Fil Ah Belly LLC slois0528@gmail.com
- Papa Smurf’s BBQ papasmurfs14@yahoo.com
- The Grill Meister, Inc 410-648-6805
- Willey’s Food Wagon
- Walker Family..... mdwalker@atlanticbb.net
- Phat Daddy’s BBQ info@phatdaddysbbq.com
- Crazy Rick’s crazyricksfoodtruck@gmail.com

Queen Anne’s County

- Big Pig Roger L’Heureux lahroe@yahoo.com 732-979-4988
- Blue Monkey Street Tacos macqueen1@mac.com 443-994-4487
- BBQ Bueno..... mande@bbqbueno.com 732-979-4988
- Chesapeake Celebrations info@chesapeakecelebrations.com 410-725-8468
- Chester River 301 chesteriverclam@gmail.com 443-239-3815
- C Legg Seafood CLEGGSEAFOOD86@gmail.com 410-490-5748
- Cold Stone..... VIRGINIAKING78@yahoo.com..... 302-727-1004
- Commerce Street Creamery Truck creamerycafebistro@gmail.com 410-758-6779
- Coneheads wreckers@aol.com 732-267-6489
- Country Concessions..... ctyconcessions@aol.com..... 443-277-5007
- Cup O’Dough/Oh My Chocolate bob@ohmychocolate.com..... 410-827-5877
- Danielle’s Pit Stop grillmasterone@verizon.net 410-490-7669
- El Nene Latin Food Mobile Unit 1 baysideoillc@gmail.com 240-615-0414
- Isiah’s Ice Cream Delight..... Ldoddjr24@gmail.com 410-490-0813
- J.R.Thomas Seafood & Catering..... raythom@yahoo.com 410-725-0007
- Jack Frost Snowballs On Wheels jackfrost1104@gmail.com 443-618-0120
- Java Express..... lora4alm@libertea.us..... 901-922-1999
- Jimmy’s Fat Rolls jimmysfatrolls@gmail.com..... 302-245-1755
- Paul Gunther Catering paulgunther14@gmail.com 410-758-1065
- Pete’s PeteZa petespeteza@gmail.com 443-298-9160
- Pupuseria Kent Island Mobile irvingpadilla@ymail.com 410-490-9898
- Pura Vida Bowls & Java..... puravidajavabowl@gmail.com..... 443-786-5332
- Rock and Rye Bistro..... annapolitanpalate@gmail.com..... 410-972-1030
- Shore Good Eats..... patty@chesapeakechef.com 410-971-0031
- Smokin J’s BBQ smokinjsbbqemail@gmail.com..... 443-889-4963
- Smoky Mozz Pizza kurt@chesapeakechefs.com 410-829-0307
- So Coast..... socoast2021@gmail.com 443-362-6244
- Spanky’s Soulfood and BBQ..... spankysbbq77@gmail.com..... 301-442-7528
- Stony Man Coffee..... brooks@stonymancoffee.com 410-660-5772
- Taqueria Y Pupuseria Norma irvingpadilla@ymail.com 410-490-9898
- Tasty Toucan Mobile..... tastytoucanicecream@gmail.com 410-533-1050
- The Red Shef theredshef@gmail.com..... 443-735-7373
- Yo Java Bowl creamerycafebistro@gmail.com 410-758-6779





KENT COUNTY
265 MILES
... of shoreline along the Chesapeake Bay and Chester
and Sassafras Rivers.

KENT COUNTY BUSINESS

Kent County's major industries include Agriculture, Education, Healthcare, Manufacturing, and Tourism.

Kent County, founded in 1642, is located on the Eastern Shore of Maryland, directly east of Baltimore. The boundaries include the Sassafras and Chester Rivers, the State of Delaware, and the Chesapeake Bay. The county is located within 90 minutes of three international airports and three major seaports. Route 301 provides a major north-south artery for commercial transportation, linking Maryland to Delaware and making the area a perfect location for warehouse and distribution operations.

A border-to-border, open-access, high-capacity, fiber-optic network with an international point of presence in the county encourages the growth and development of diverse businesses such as data centers, call centers, cyber security, telemedicine, training and education centers. In addition, Kent County is the perfect locale for emerging technologies including environmental, aquaculture, and agriculture businesses, with over 133,000 acres of farm land, 265 miles of tidal shoreline, and close proximity to federal laboratories and research centers. Chestertown, the county seat, is home to a Maryland Arts & Entertainment District and a state Enterprise Zone offering tax credits for job creation and investment. Commerce Zone and Job Creation Tax Credits are available throughout the county. Kent's rural setting provides an excellent quality of life with easy access to urban areas.

Downtown Chestertown Association (DCA)

The DCA is a business membership organization representing retailers, restaurants, professional services and lodgings. Their mission is to work together to create a healthy and prosperous downtown economy through activities that promote tourism and encourage residents to shop and dine locally. They sponsor First Fridays in Chestertown and collaborate in numerous festivals and events throughout the year. Contact downtownchestertown@gmail.com for information

Photo credit: Kate Livi



Photo credit: Steven G. Atkinson, ShoreToBeFun Photography



Photo credit: Steven G. Atkinson, ShoreToBeFun Photography

SCORE® Upper Shore - Chapter 670

The Upper Shore chapter of SCORE is dedicated to helping new entrepreneurs as well as seasoned business owners achieve success. SCORE provides free, confidential assistance and direction to people seeking information on all aspects of starting and operating a business. To receive assistance, call **410-810-2969** to set up an appointment. Anyone interested in volunteering as a SCORE counselor is also welcome to call. Additional information via: **www.uppershore.score.org**



Photo credit: Robert Peacock Photography

Upper Shore Division of Workforce Development & Adult Learning (DLLR)

The Upper Shore Division of Workforce Development and Adult Learning, within the Maryland Department of Labor, Licensing and Regulation and operated the Maryland Workforce Exchange, a Website that provide Maryland job opportunities throughout the state. In the Upper Shore, with assistance of partners DLLR/DWDAL operates the American Job Centers that creatively and effectively coordinates job seeker services and training, business services, adult learning programs, and labor market information. The goal is to ensure that businesses have skilled workers and job seekers have access to employment and training resources and services. Locally, services are provided at the American Job Center – Chestertown (Kent County Career Center, 115 A South Lynchburg Street in Chestertown. Call **410-778-3525** or visit **www.dllr.maryland.gov**.

Small Business Development Center

The Maryland Small Business Development Center (MD SBDC) Network is a partnership between the U.S. Small Business Administration and the University of Maryland, College Park. This partnership links private enterprise, government, higher education and local economic development organizations to provide management training and technical assistance to Maryland’s small businesses. The SBDC Eastern Region offers free counseling services, a comprehensive resource library, and affordable training programs. Contact Richard Loeffler at Chesapeake College at **410-827-5304** or email **rloeffler@chesapeake.edu**.

Kent County Lodging Association

The Kent County Lodging Association provides a united voice for independent local inns and B&Bs. Members address proposed legislation, shared accommodation availability, and educational

and promotional opportunities. The organization meets regularly around the County and membership is open to people with lodging businesses in Kent County. Information is available at **www.kentcounty.com/lodging**.

Greater Rock Hall Business Association

The Greater Rock Hall Business Association is a member based non-profit organization dedicated to promoting business in the Rock Hall area. We advertise, educate and serve as an advocate for our member businesses and we support community events that contribute to the success of our membership. For more information, contact **rockhallbusiness@gmail.com**.



LEASING OPPORTUNITIES

• CHESTERTOWN • STEVENSVILLE • SMYRNA •
• SEAFORD - COMING 2022 •



Locate your business in one of our quality, affordable locations.


For Leasing Info: **410-810-1574**
WWW.KRM-DEV.COM

2022 Bronze Sponsor

**THE PEOPLES BANK**

Join **Peoples Perks!**

- Instant Issue Debit Cards
- Fixed-Rate Mortgage Loans
- Remote Deposit Capture
- Round Up Savings
- Banking Anywhere
- Bill Pay Services



www.pbkc.com
410-778-3500

Member **FDIC**



2022 Silver Sponsor

**2021 KENT COUNTY CHAMBER OF COMMERCE
COMMUNITY EXCELLENCE
AWARD WINNER**

Main Street Chestertown

Congratulations to Main Street Chestertown for being a 2021 Kent County Chamber of Commerce Community Excellence Award Winner!

The Kent Chamber is proud to present Main Street Chestertown with a Community Excellence Award for their outstanding contributions to the Chestertown community during the past year. Main Street Chestertown, in addition to its core mission of revitalizing downtown Chestertown, launched four initiatives directly aimed at supporting the shops, merchants, and restaurants being impacted by the pandemic and resulting distribution to business.



Kay Macintosh, Executive Director (Retired)

Building Your Business on the Eastern Shore



Since its formation in 2005, the **Upper Shore Chapter of SCORE** has served as a trusted advisor to aspiring entrepreneurs and small business owners in Kent, Queen Anne's, and Cecil County. Our business mentors are experienced professionals from diverse business backgrounds. Our mentors are eager to help you with such matters as developing a business plan, marketing program, or by providing guidance on loans or other funding sources. If you are thinking about starting a business or need help taking your business to the next level, we can help. For more information visit www.uppershore.score.org

Mentors Wanted

If you're already an experienced professional, you can be a business mentor too. The skills, knowledge and business savvy you developed in your commercial or nonprofit career are valuable resources for entrepreneurs here on the Eastern Shore. Whether you are retired or still in the workforce, if you have business experience to share and want to help others, you welcome to join our team. As a SCORE volunteer you'll use your knowledge and experience helping others succeed, while supporting our community in a meaningful way. As a mentor you'll provide the encouragement, business savvy, and experienced perspective that every aspiring entrepreneur needs to succeed. The satisfaction that comes from helping local businesses flourish is as rewarding for our mentors as it is for our clients.

Volunteer Today!

The waning COVID-19 pandemic has released the entrepreneurial spirit in our area, and requests for mentoring are growing. The Upper Shore SCORE chapter, located in Chestertown, is looking for more volunteers. Its orientation and mentoring certification program will provide you with everything you need to be a successful volunteer. SCORE is a nonprofit organization funded by the U.S. Small Business Administration with support from local governments and allied organizations.

If you would like more information, contact our Chapter Chair, Tim Abeska, at **(410) 639-2496**, or by email at timothy.abeska@scorevolunteer.org



Proudly serving
Kent, Queen Anne's,
and Cecil Counties



Bob Altieri,
President & CEO



Rob Thompson,
Sr. Lender



Justin Varga,
Lender



Kristen Owen,
CFP®



Karyn Dustin,
Branch Manager



Sue St. Amour,
Asst. Branch Manager

*Our focus is
totally here.*

Chesapeake Bank & Trust is a full-service bank committed to providing the highest possible customer service to our local community. All of our decisions are made here, in Chestertown, which enables us to work efficiently, effectively and with complete confidentiality. Because we work where we live, we feel connected to our clients.

To learn more about our complete line of custom financial services and solutions, visit us at either of our two branches at 245 High St. or 301 Morgnec Rd.. We look forward to meeting you!



CHESAPEAKE
BANK AND TRUST COMPANY

truly local

410-778-1600
chesapeaketrust.com

WASHINGTON COLLEGE
FOUNDED 1782

The first college founded in the United States after the Revolutionary War, Washington College educates leaders and responsible citizenry for a changing world.



KENT COUNTY
EDUCATION

Board of Education

The Board of Education consists of a 5-member panel elected to staggered four-year terms by the citizens of the County. The Board determines the policies of the county school system under the guidance and direction of the State Board of Education and State Superintendent of Schools. Public meetings normally take place on the second Monday of every month at 6:30 p.m.

Character Counts!
Kent County

Character Counts Kent County is a nonprofit community-based Character Education program whose mission is to strengthen our community by encouraging a culture of kindness and strong ethical values through The Six Pillars of Character: Trustworthiness, Respect, Responsibility, Fairness, Caring, and Citizenship. CCKC is the leading facilitator of character education lessons in Kent County. The organization provides educational tools and support to community members who desire to make a difference in the lives of children in their schools and communities. These dedicated individuals teach lessons that reflect one or more of the six pillars. The strength of the program lies in the work of the volunteer character coaches. The success of the coaches' efforts will result from the demonstrative support from teachers, school staff members in the schools and parent involvement at home. The Character Counts program is conducted in Kent County Public Schools, the Chestertown Christian Academy and Kent School.

Kent County Public Schools

Anchored in excellence, Kent County Public Schools will provide personal learning experiences within a collaborative community of learners that inspire our students to reach their highest potential and become engaged global citizens. This is the mission of the Kent County Public Schools. To accomplish this goal, the Kent County Public School System recognizes that our schools must challenge and support all students; provide a safe and orderly environment; prepare students to be responsible citizens and promote recognition and respect of diversity and multiculturalism. By achieving these objectives, the system prepares students to lead in a

Residents of Kent County have excellent choices in education with both public and private school options for students from pre-kindergarten through post-secondary levels. A number of adult education programs are also offered by the County School District as well as at our local colleges to provide continuing education opportunities and work force training assistance.



Photo credit: Steven G. Atkinson, ShoreToBeFun Photography

Photo credit: Steven G. Atkinson, ShoreToBeFun Photography

global technological society and enables students to enjoy the opportunities offered as information systems change. The Kent County Public School System sees these responsibilities as a shared endeavor among teachers, parents, students, and the community. Kent County Public Schools are committed to the continuous improvement required in a world of exponential change. The Kent County Public School System includes five schools: one comprehensive high school, one middle school, and three elementary schools. Additionally, there is an Intensive Behavior and Academic Learning Center offered as an alternative school program in the district. As a comprehensive High School, Kent County is able to provide a rigorous academic program, as well as access to nine Career and Technology Pathways. High school students may also partici-

pate in dual credit enrollment opportunities with both Washington College and Chesapeake Community College, including participation in a variety of sports and clubs that are offered as part of the well-rounded high school experience.

Through strong community partnerships, Kent County Middle School students have the opportunity to engage in project-based learning where academic skills are applied to real-life problem solving. Students earn service-learning hours by becoming actively engaged in their communities. Kent County Public Schools provide personalized instruction to the students in a caring family atmosphere. Free full day universal pre-kindergarten is offered to all children who reside in Kent County. Kent County Public Schools prides in providing all students a designated technology device throughout the school year, with unlimited digital access to educational resources both in and outside of school. Students in kindergarten through grade six (6) receive instruction on computational thinking and coding through their Media curriculum, with additional specialized course opportunities in STEM and Advanced Placement at the secondary level. Secondary students in the Science, Technology, Engineering, and Mathematics (STEM) Academies learn in a platform that provides ubiquitous information and personalized learning. KCPS offers a variety of summer learning experiences in the areas of fine arts, physical education, and critical and creative thinking. System-provided transportation makes these opportunities available to all students. The Kent County community continues to rally behind the school system efforts to offer qual-

2021 KENT COUNTY CHAMBER OF COMMERCE
COMMUNITY EXCELLENCE
AWARD WINNER

The Kitchen at the Imperial

Congratulations to The Kitchen at the Imperial for being a 2021 Kent County Chamber of Commerce Community Excellence Award Winner!



Steve Quigg, Chef and Owner

hit and many were forced to work from home or seek unemployment benefits, our hospital staff diligently reported to work to care for the ill. With few customers to serve, owner and chef Steve Quigg reached out to the hospital offering to cook and deliver meals for the night shift at the hospital. This is just one example of how The Kitchen reinforced the principles it abides by--being a community restaurant.

The Kent Chamber is proud to present The Kitchen at the Imperial with a Community Excellence Award for their many outstanding contributions to the community--especially our hospital staff during the onset of COVID-19. When the pandemic



Kent School

Kent School serves children from Preschool through Grade 8.
Our unparalleled environment for learning on the bank of the Chester River offers a safe, nurturing environment where childhood is preserved and students are prepared for success in secondary schools and beyond.

Integrity
Respect



Responsibility
Friendship

6788 Wilkins Lane Chestertown
410-778-4100
admissions@kentschool.org
www.KentSchool.org

ity programs services. The Character Counts program supports the character development of students and is made possible because of the many dedicated volunteers. Additionally, Kent County Public Schools' students benefit from the services provided by Echo Hill, SEEC, Sultana, Washington College staff and many other partners in learning such as Kent County Arts Council and River Arts.

Kent School

Located just outside of historic Chestertown on the beautiful Chester River, Kent School offers an unparalleled environment for learning serving boys and girls from Pre-Kindergarten through Grade 8. Kent School's mission is to help students realize their full academic promise. The school accom-

plishes this by setting high academic and personal standards; by understanding how each student learns best; by having a devoted and highly skilled faculty; and by actively living its community values of integrity, respect, responsibility, and friendship. Kent School educates students through active learning experiences which develop understanding of academic content, appreciation of the arts, use of learning skills, ability to engage in critical thinking, and a strong sense of community. The School is known for its nationally recognized Chesapeake Bay Studies program and uses mind, brain and education science from its work with the Center for Transformative Teaching and Learning to inform program. Special talents and passions

are nurtured and celebrated. Kent School is accredited by the Maryland State Department of Education and the Association of Independent Maryland DC Schools (AIMS MDDC). It is a member of AIMS MDDC and the National Association of Independent Schools (NAIS). Learn about us online at **www.kentschool.org** and then visit us to see firsthand how joyful learning can be.

The Gunston School

Founded in 1911 and serving approximately 205 students, The Gunston School is an independent, co-educational, college-preparatory school for students in grades 9 through 12. The Gunston School offers an intellectually rigorous, highly personalized, and nurturing college preparatory educa-

THINGS TO DO WITH KIDS

Kent County Parks and Recreation

- **Worton Park** – 10932 Worton Road, Worton
- **Betterton Beach** – 5 Ericsson Avenue, Betterton
- **Toal Park** – 13753 Augustine Herman Highway, Galena
- **Edesville Park** – 22020 Lovers Lane, Rock Hall
- **Kent Agricultural Center** – 21349 Tolchester Beach Road, Chestertown
- **Bayside Landing Pool** – 20927 Bayside Avenue, Rock Hall
- **Millington Pool** – 154 Millington Road, Millington

Chestertown Parks:

- Ajax Park
- Bailey Park
- Gateway Park
- Henry Highland Garnet Elementary School Playground
- Kent County Middle School Basketball Court
- Wilmer Park

Kid Friendly Business and Organization

Visit: www.kentcounty.com/category/edu-dir

- Echo Hill Camp
- Echo Hill Outdoor School
- Garfield Center for the Arts Summer Camps
- Hester Academy of Irish Dance
- Imagination Library
- Kent County Public Library – Chestertown
- Kent County Public Library – North County
- Kent County Public Library – Rock Hall
- Millington Community Center and Free Library
- Music Life
- River Arts Chestertown KidSPOT
- Rock Hall Yacht Club Sailing School
- Sultana Education Foundation
- Worthmore Equestrian Center
- Kent County YMCA
- YMCA Camp Tockwogh

tional experience. Valuing a healthy balance between mind and body, a strong sense of community, the creative process, and our connection to the Chesapeake Bay, Gunston strives to educate ethically and environmentally minded scholars, citizens, and leaders for our globalized society. The Gunston School is accredited in the Middle States Association of College and Secondary Schools, the Association of Independent Maryland and DC Schools, and is a member of the National Association of Independent Schools. For additional information contact us at **410-758-0620**, or visit **www.gunston.org**.

Chestertown Christian Academy

Chestertown Christian Academy was founded in 1979 as a ministry of Chestertown Baptist Church. CCA's mission is to assist families and the local community in cultivating the next generation to be spiritually, academically, socially and physically well-balanced. A complete academic program is offered in Pre-K through twelfth grade with a strong college preparatory emphasis for secondary students. Daily Bible classes and weekly chapel services are also integrated into the curriculum. CCA is a member of the Delaware Valley Athletic Conference as well as the Maryland Association of Christian Schools. Athletic opportunities include soccer, volleyball, and basketball. For more information, please call **410-778-5855** or visit our website at **www.chestertownchristian.org**.

Radcliffe Creek School

The mission of Radcliffe Creek School is to empower children in a dynamic environment that celebrates unique

learning. At Radcliffe Creek School, the student is at the center of the learning process, therefore classroom instruction is tailored to each individual student with a 3:1 student to teacher ratio. This process begins with the identification of each student's strengths and weaknesses. The School creates an environment where customized learning goes hand-in-hand with academic success and better self-awareness. Radcliffe Creek School believes that as each student develops a positive belief about oneself, he or she is able to engage in the learning process and become a more self-regulated and independent learner. Radcliffe Creek draws students from across Maryland and also includes a preschool, Little Creek, for infants through pre-kindergarten. For more information, call **410-778-8150** or visit **www.radcliffecreekschool.org**.

Chesapeake College

Chesapeake College, Maryland's first regional community college, serves Kent County residents of all ages. Located in Wye Mills, the comprehensive two-year college offers associate's degree programs, workforce training and personal enrichment. Students choose their own paths and Chesapeake helps them reach their goals – whether it is training for a new career or earning credits toward a degree.

Noncredit career training, including skilled trades instruction and health career programs, provides expanded learning opportunities for the community. Adult Basic Education classes allow students to earn a GED or study English as a Second Language. Personal enrichment classes are designed to



Photo credit: Steven G. Atkinson, ShoreToBeFun Photography

develop skills and discover talents from computers to cooking. High school students can get a head start on college with credits they earn in Chesapeake's Dual Enrollment Program.

Businesses in the region turn to Chesapeake College to help their employees acquire new skills and keep up with industry changes. Chesapeake will design customized on-site training programs and workforce development courses for both the public and private sectors. For more information, please visit our website at **www.chesapeake.edu**

Washington College

The first college founded in the United States after the Revolutionary War, Washington College was established in Chestertown in 1782 under the patronage of George Washington, to educate leaders and responsible citizenry for a changing world.

As one of the nation's leading liberal arts institutions, Washington College provides students with a distinctively hands-on education that often draws on the history and ecology of the region. WC's three signature centers regularly enrich the area's cultural life:

The Starr Center for the Study of the American Experience engages

students in local explorations of history and hosts prominent authors and experts for public lectures and special events. The **Center for Environment & Society** promotes interdisciplinary learning, research, and stewardship of natural and cultural resources, monitoring the health of its waterways, training the next generation of environmentalists at the River and Field Campus, and presenting national experts in areas of biodiversity, sustainability, food production, and more. The **Rose O'Neill Literary House** hosts significant writers, poets, and editors for readings and workshops. Campus visitors are welcome to attend an array of public lectures and sporting events, as well as performances in music, theater and dance, and exhibitions of visual art, in its Gibson Center for the Arts.

This private liberal arts college with an enrollment of about 1,450 also offers a rich variety of continuing education courses through the **Washington College Academy for Lifelong Learning (WC-ALL)**. Residents who join The 1782 Society are invited to special campus events and are eligible to use the College's fitness facilities for an additional annual fee. **www.washcoll.edu**.



Kent County Public Schools meet the COVID-19 challenge.

Navigating a school system during COVID-19 was challenging. In Spring 2020, the Kent County Public Schools (KCPS) was forced to close in-person operations and quickly pivot from traditional practices to an instructional delivery model that focused largely on virtual learning. In a school system of five schools, three elementary schools, one middle school and one high school, the interruption of in-person operations created significant logistical challenges.

Planning Was Key

To steer the school system through these challenges, KCPS developed complex plans. Throughout the pandemic, the system had to pivot into plans that provided high quality remote instruction, deployed re-sources to deliver meals to students, navigated the lack of internet connectivity for many families, and finally, transitioned into a hybrid instructional

model that provided simultaneous in-person instruction and remote learning for students. Navigating these challenges were comparable to flying a plane while undergoing construction. Enormous resources were required at every organizational level.

Working the Plan

Capitalizing on all available in-house resources and expanding into the identification of resources within the community were the keys to success. Support our Schools (SOS) worked collaboratively with KCPS to create Learning Hubs throughout the county that provided additional support to students during virtual learning. The district deployed school buses to provide mobile internet services to communities in need and purchased internet hot spots to support additional families. The district also worked to provide connectivity support at the Learning Hubs. Feeding students

and delivering meals into the community was an enormous challenge for a small school system. Resources were deployed within the system to package over 12,500 meals a month, deliver those meals to fifteen (15) meal sites throughout the community, and provide adequate staffing to man meal sites. Success was vastly due to the dedication of KCPS foodservice workers, bus drivers, and instructional assistants. KCPS resources were also combined with partnerships from the Social Action Committee, Minary's Dream Alliance, and included a wide range of community volunteers. It was a community endeavor!

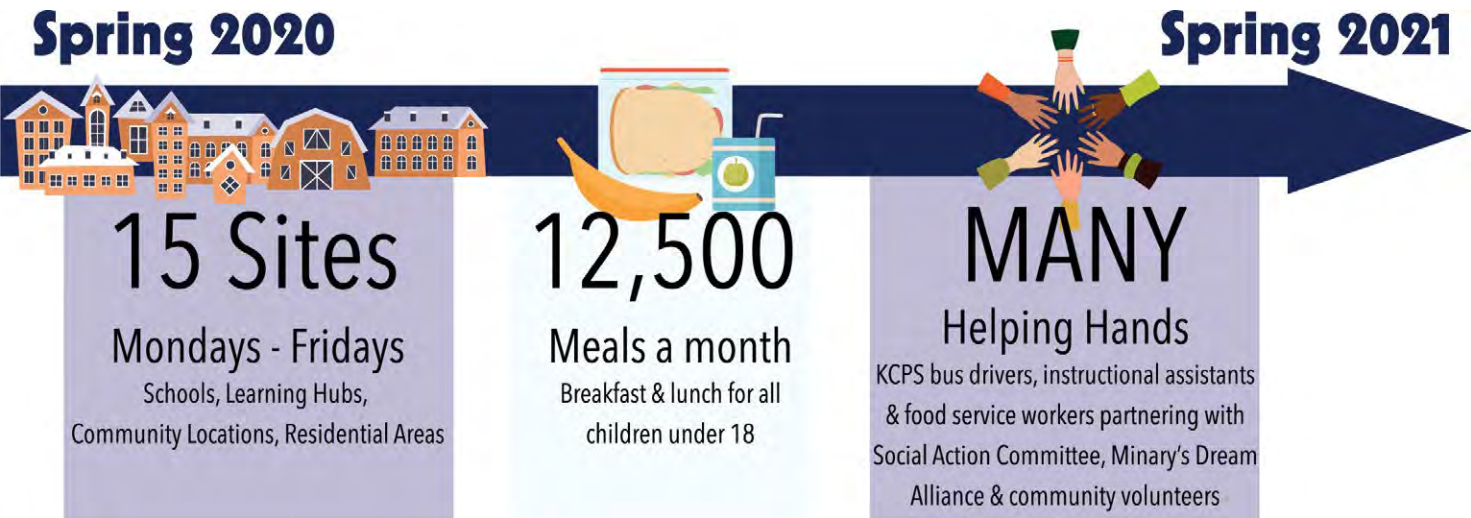
Fall 2020

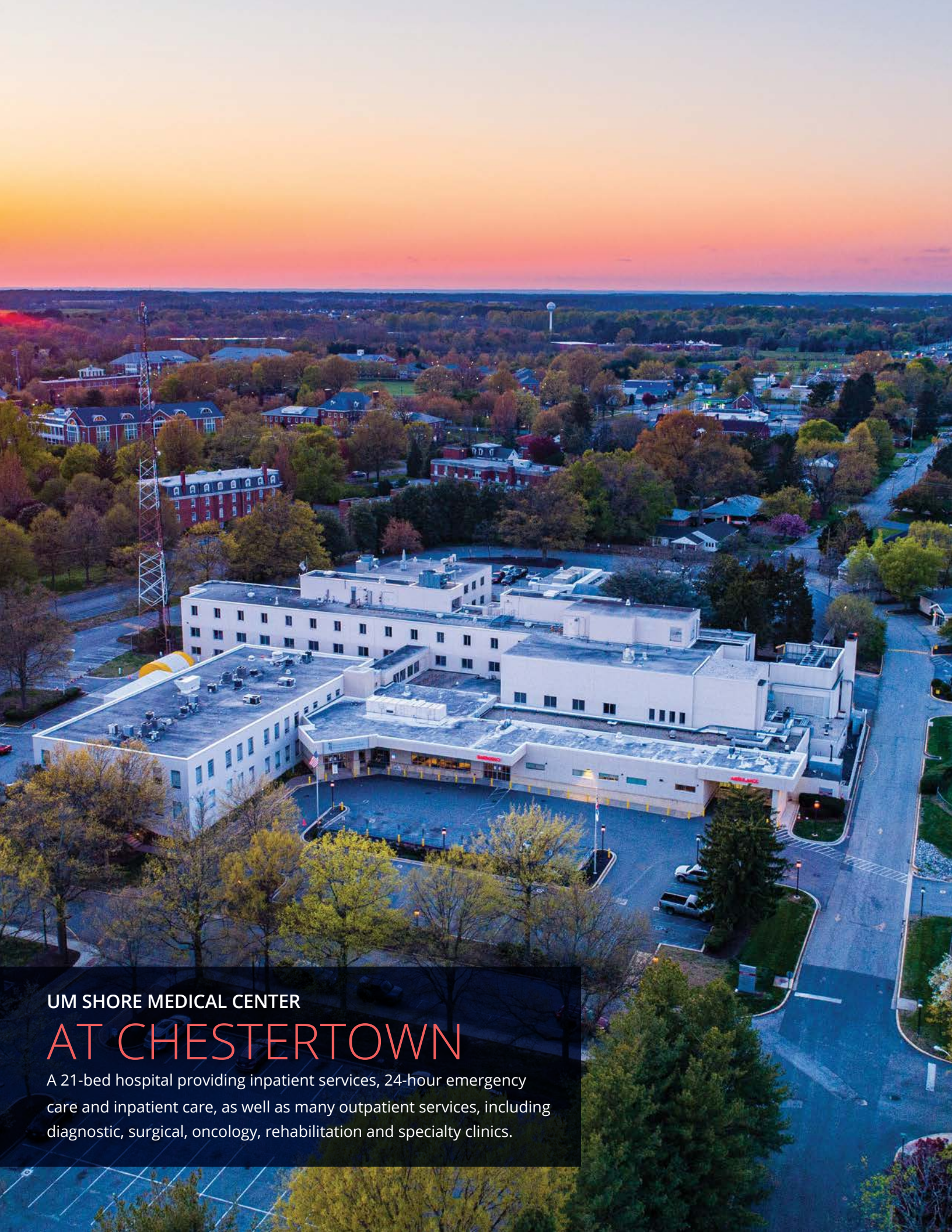
As the pandemic evolved, students continued to be positioned in challenging learning situations. Lessons learned during remote learning in Spring 2020 informed the hybrid instructional model that was implemented in Fall 2020, Requirements to socially dis-

tance students during the pandemic, mandated the plan for a new instructional learning model. Students at the elementary and high school level were divided into two learning cohorts. The students in these cohorts received two days of in-person and three days of remote instruction respectively. Kent County Middle School, however, was able to provide four days of in-person instruction due to the even distribution of students who opted for remote and face-to-face instruction. As a result, Kent County Middle School provided more in-person instructional days than any other school in the state of Maryland! Hybrid instruction required teachers to expertly deliver simultaneous lessons to students who were learning remotely and attending schools for face-to-face instruction. KCPS teachers became experts at pivoting through new instructional systems, methods, and expectations for teaching and learning.

Positive Change

Due to the expertise and perseverance of staff, these challenges catapulted KCPS into new horizons that forever changed the system. Teachers are using technology to leverage new teaching and learning opportunities for students. This leverage will help KCPS transition into remote learning if needed in the future. Teachers mastered the use of digital tools to build strong relationships with students and use digital strategies to engage with students, families, and staff. Teachers also provide more remote opportunities for tutoring, conducting parent/teacher conferences, scheduling virtual meetings, and providing virtual meeting options for extra-curricular activities. COVID-19 may have disrupted KCPS operations; however, it did not dampen the spirits of staff who persevered some of the most challenging times in public education. Agility in the face of adversity is the new normal for KCPS!





UM SHORE MEDICAL CENTER
AT CHESTERTOWN

A 21-bed hospital providing inpatient services, 24-hour emergency care and inpatient care, as well as many outpatient services, including diagnostic, surgical, oncology, rehabilitation and specialty clinics.

KENT COUNTY
HEALTHCARE

Kent County Health Department

As a member of the University of Maryland Medical System (UMMS), University of Maryland Shore Regional Health is a coordinated network providing comprehensive health care services to the residents of Caroline, Dorchester, Kent, Queen Anne’s and Talbot counties. The network includes:

- UM Shore Medical Centers at Chestertown, Dorchester and Easton;
- UM Shore Emergency Center at Queenstown;
- UM Shore Medical Pavilions at Chestertown, Dorchester, Denton, Easton and Queenstown;
- UM Chester River Home Care and UM Shore Home Care;
- Multiple physician practices and outpatient diagnostic, rehabilitation, and clinical services located in Kent County and throughout neighboring Caroline, Dorchester, Queen Anne’s and Talbot counties;
- Regional physicians specializing in endocrinology, family care, ENT, urology, OB/GYN, pulmonology and cardiology at Shore Medical Center – Chestertown or at the Shore Medical Pavilion at Chestertown;
- Urgent Care Centers, in partnership with ChoiceOne, in Denton and Easton.

University of Maryland Shore Medical Center at Chestertown

UM Shore Medical Center at Chestertown is a 21-bed hospital providing inpatient services, 24-hour emergency care and inpatient care, as well as many outpatient services, including diagnostic, surgical, oncology, rehabilitation and specialty clinics. The hospital is licensed by the Maryland Department of Health and Mental Hygiene and accredited by The Joint Commission. With generous financial support from the community and the University of Maryland Medical System (UMMS), the hospital opened the Eleanor and Ethel Leh Women’s Health Center in 2013; a new, expanded and state-of-the-art emergency department in 2014; and a renovated and updated Critical Care Unit in 2016. Compass Regional Hospice operates a four-bed inpatient hospice unit on the third floor of the hospital. The medical staff currently includes more than 130 active and consulting physicians representing many specialties.

Photo credit: Sam Sloger, Shore Studios

The Kent County Health Department provides many services including:

- Cancer Screening (Colorectal, Breast, Cervical, Skin)
- Communicable Disease
- Environmental Health
- Child Health and School Health
- Family Planning
- Medical Adult Day Care
- Geriatric Evaluation Services
- Medical Assistance – Personal Care & Monitoring
- Medical Assistance
- Transportation
- Diabetes Prevention Program
- Quit Tobacco Program
- Addictions Treatment

Transitional and Post Acute Care Services

UUM Shore Regional Health's **Transitional Nurse Navigator (TNN)** and **Outpatient Palliative Care** programs assist patients in managing chronic and/or life-limiting conditions after discharge from the hospital. The transitional nurse navigator at UM Shore Medical Center at Chestertown works with the patient, his or her physicians and nurses, case manager and other personnel to make arrangements for the patient's care after discharge and identify any special needs that may be met through various community resources, including transportation and home care. The goal of the transitional care program is to provide patients and their loved ones with the support and education needed to manage their condition and maintain their best possible health in their home environment. The **Outpatient Palliative Care Program**, which is staffed by physicians and nurses with special expertise in palliative care, works with patients and their primary care and specialist providers to alleviate symptoms and complications of various chronic, life-limiting conditions (for example, cancer, COPD, congestive heart failure, advanced dementia, etc.). Palliative Care is a medical specialty focused on preventing, treating and relieving pain and other debilitating effects of serious and chronic illnesses. With the goal of improving the quality of life for patients and families dealing with a condition that is chronic and/or advanced, palliative care provides education and support at any stage during an illness. For more information

about TNN care, call **410-822-1000, ext. 5359**. For more information about Outpatient Palliative Care, call **410-822-1000, ext. 5041**.

University of Maryland Chester River Home Care

UM Chester River Home Care provides home health care to citizens of Kent and Queen Anne's counties in the comfort of their own homes. Under the direction of the patient's personal physician, an individualized plan of care is followed. Home care services are especially recommended for patients recently discharged from the hospital or who are in recovery from a recent surgery or a wound. Nurses provide disease and medication management and instruction; physical, occupational and speech therapists help to optimize patients' functional skills and activities of daily living so they may enjoy the best possible quality of life; home health aides provide personal care; and social workers help patients and their loved ones navigate financial and family issues and connect them to community resources. For information on home care, please call UM Chester River Home Care, **410-778-1049, 410-758-3238** or toll free, **877-778-1049**.

Chester River Health Foundation

Chester River Health Foundation raises funds to support the patient care services provided by UM Shore Medical Center at Chestertown (formerly Chester River Hospital Center) and Chester River Home Care. The Foundation is governed by a volunteer Board of local community representatives. Funds are raised through a variety of programs,

including special events such as the annual golf tournament, annual gifts, memorial gifts, charitable gift annuities, grants and bequests. Contributions remain in the local community and are used to purchase new technology, enhance facilities, add new services and provide staff training and development. The Foundation is a member of University of Maryland Shore Regional Health. For more information contact the Chester River Health Foundation, **410-810-5660**.

Compass Hospice

Compass Hospice provides hospice care and grief support services to people of all ages in Kent, Queen Anne's and Caroline Counties. "Care on your terms" is the promise that guides us as we care for patients in private residences, nursing homes, assisted living facilities, and our residential Hospice Centers in Chestertown, Centreville and Denton. Through our Palliative Care program, we offer resources for people who have been diagnosed with a life-limiting illness and are not yet ready for hospice. Compass Kids specializes in hospice and palliative care for the youngest, medically frail patients along with support programs and counseling for their families. The Hope & Healing Center hosts the annual grief retreat Camp New Dawn and a collection of support groups, individual counseling and school-based programs designed to help children, teens and adults live beyond significant losses. As a non-profit organization, Compass Hospice relies on financial support from the community to provide services not covered by Medicare, Medicaid and private insurance. For more information, call

443-262-4100 or visit **www.compassregionalhospice.org**.

The Eastern Shore Area Health Education Center

The Eastern Shore Area Health Education Center (AHEC) is a private, non-profit, 501(C) 3 organization, which became operational in 1997. Governed by a 16 person Board of Directors, AHEC services the nine counties comprising Maryland's Eastern Shore. To accomplish our mission, AHEC works to recruit and retain health professionals in the medically underserved areas on the Eastern Shore and offers health care education programs for health professionals in the service area and students from colleges and universities

in Maryland and surrounding areas. For information: **esahec@esahec.org, 410-221-2600, www.esahec.org**.

Kent Center

Kent Center is a not-for-profit charitable organization that provides 24-hour a day services for adults with developmental and intellectual disabilities. Through various programs – including Supported Employment, Residential, Special Olympics/Athletic Club, Day/Vocational, and Community Volunteering – we elevate each individual's diverse abilities to comprise a meaningful, fulfilling, and independent life. Additional occupational training is provided through our enterprises: Hidden Treasures thrift store, Confidential

Shredding, and Kent House Kitchen. For more information, visit **www.kentcenter.org** or call **410-778-7303**.

Assisted Living in Kent County

Kent County has many assisted living facilities – residences for those who need help with daily activities that may include mobility, medications, meal preparation, and household chores. The definition of assisted living" excludes skilled nursing care. These facilities are set up in a home-like configuration that promotes independence. Assisted living facilities are certified for specific levels of care by the Federal and State governments. Most accept Medicaid payments.

2021 KENT COUNTY CHAMBER OF COMMERCE PERSON OF THE YEAR

Dr. Gerard S. O'Connor
General Surgeon (Retired)

Congratulations to Dr. Gerard O'Connor, a practicing general surgeon in Chestertown for the past 38 years, for being the 2021 Kent County Chamber of Commerce Community Excellence Person of the Year!

The Kent Chamber is proud to present Dr. O'Connor with the Community Excellence Person of the Year Award for his outstanding contributions to Kent County. Dr. O'Connor dedicated his medical career to serving the surgical needs of Kent County residents. In addition to being a medical professional, Dr. O'Connor was extremely active in the community, serving with several community organizations. Recently, he is most recognized for his dedicated efforts in launching a grassroots movement--Save Our Hospital--to preserve inpatient care at the Chestertown Medical Center. This movement was instrumental in paving the way for the Chestertown Medical Center being designated a Maryland Rural Hospital.



MEET THE ARC CENTRAL CHESAPEAKE REGION



For 60 years, The Arc Central Chesapeake Region (The Arc) has provided person-centered supports for people with intellectual and developmental disabilities to live, work, learn, and connect with their communities. We are a regional organization that has been proud to support Kent County since 2012. At The Arc, there's no one-size-fits-all approach to our services. We provide services throughout a person's life—from the time a child is diagnosed with a disability through the span of their life. Our team takes time to fully understand each person's hopes and dreams to develop opportunities that are a perfect fit for the people and families we support. The Arc has been a leader in creating greater access and opportunities for people with intellectual and developmental disabilities to Maryland's Eastern Shore. While possessing a distinct history, culture, and opportunities for

the families that call it home, the region remains underserved, with a shortage of service providers that support people with intellectual and developmental disabilities.

In other parts of Maryland, more than ten providers may support people with intellectual and developmental disabilities in one county—a range of options not present on Maryland's Eastern Shore. It is imperative that people with disabilities have choices that support their needs in the same manner that all people have options for unique support services.

The Arc remains committed to providing these options so that people we support and those who have yet to choose our support services can request and receive resources and supports that are best for themselves.

Our commitment is bolstered by the tremendous support we have received



from families like Sharon and Erin, a mother and daughter, residing in the Mid-Shore region. Erin's mother Sharon had worked with people with intellectual and developmental disabilities throughout her career in education. It didn't hit home what challenges parents face for their adult children with disabilities until she and her husband decided to move to Florida and Erin decided to stay on the Eastern Shore.

Prior to making a connection with The Arc, Erin struggled with developing relationships with others. However, as Erin began working on her personal goals with assistance from The Arc, she gained the confidence she needed and chose to live in a house close to her sister yet independently from her family. As Sharon notes, "It's been like a 180-degree turn for the best, and Erin has thrived. We are surprised to see how much she interacts with others to-

day. I'm not worried about being so far away from my daughter because I know she is safe and happy with The Arc."

Sharon also expressed her desire for The Arc to be an option for others. "I really hope The Arc grows on the Eastern Shore. I feel like many people and organizations forget about the Eastern Shore, which is why there are so few providers there. I want more people to have the same resources that Erin has."

Over the next three years, The Arc aims to grow its Eastern Shore programs by at least 60 percent, serving 150 people with intellectual and developmental disabilities to live, work, and connect with their community. We are proud to continue to support Kent County and families like Erin's all across the region.

ABOUT THE ARC CENTRAL CHESAPEAKE REGION

The Arc Central Chesapeake Region (The Arc) is a dynamic, regional organization providing person-centered supports for people with intellectual and developmental disabilities to live, work, learn, and connect with their communities. We advocate for equity and access for people with intellectual and developmental disabilities to live self-determined lives and foster opportunities towards self-sufficiency. To learn more, visit www.thearcccr.org.



KENT COUNTY

PLACES OF WORSHIP

Chestertown

Asbury United Methodist Church
8979 Georgetown Road
Chestertown, MD 21620
Phone: 410-778-7184

Bethel A.M.E. Church
237 North College Avenue
Chestertown, MD 21620
Phone: 410-778-2833

Boardly Chapel AME Church
100 Hynson Road
Chestertown, MD 21620
Phone: 410-928-5677

Bond Chapel Evangelical Methodist Church
6735 Quaker Neck Road
Chestertown, MD 21620
Phone: 410-778-2457

Calvary Chapel of Chestertown
11015 Augustine Herman Highway
Chestertown, MD 21620
Phone: 410-348-5702

Chester River Friends Meeting
124 Philosopher's Terrace
Chestertown, MD 21620
Phone: 410-778-2797

Chestertown Baptist Church
401 Morgnec Road
Chestertown, MD 21620
Phone: 410-778-5844

Chestertown Church of the Nazarene
6943 Church Hill Road
Chestertown, MD 21620
Phone: 410-778-6146

Chestertown Havurah Jewish Community
101 North Cross Street
Chestertown, MD 21620
Phone: 410-778-5145

Chestertown Seventh Day Adventist Church
305 North Kent Street
Chestertown, MD 21620
Phone: 410-778-4333

Christ United Methodist Church
401 High Street
Chestertown, MD 21620
Phone: 410-778-0911

Emmanuel Episcopal Church
101 North Cross Street
Chestertown, MD 21620
Phone: 410-778-3477

Emmanuel United Methodist Church
6698 Church Lane
Chestertown, MD 21620
Phone: 410-778-0430

First Baptist Church of Chestertown • Chestertown Baptist Church
401 Morgnec Road
Chestertown, MD 21620
Phone: 410-778-5844

First United Methodist Church
105 N. Mill Street
Chestertown, MD 21620
Phone: 410-778-2977

Gospel Church of God
201 N. Lynchburg Street
Chestertown, MD 21620
Phone: 410-778-4216

Grace Community A Bible Fellowship Church
Pastor James Reff
400 Morgnec Road
Chestertown, MD 21620
Phone: 410-778-0390
jamesreff81@gmail.com
www.gracebfcchestertown.org

Hope Fellowship
892 Washington Avenue
Chestertown, MD 21620
Phone: 410-778-3577

Janes United Methodist Church
120 South Cross Street
Chestertown, MD 21620
Phone: 410-778-0633

Jehovah's Witness Kingdom Hall
2020 McGinnes Road
Chestertown, MD 21620
Phone: 410-778-5075

Liberty Lighthouse Apostolic Church
116 Liberty Lane
Chestertown, MD 21620
Phone: 410-778-6521

Living Water Greater Highway Church of Christ
211 Maple Avenue
Chestertown, MD 21620
Phone: 410-810-3856

Mt. Pleasant United Methodist Church
9175 Fairlee Road
Chestertown, MD 21620
Phone: 410-810-3185

New Life Christian Outreach
101 Country Day Road
Chestertown, MD 21620
Phone: 410-643-6737

Potters House Ministries
8814 Fairlee Road
Chestertown, MD 21620
Phone: 410-778-0100

Presbyterian Church of Chestertown
905 Gateway Drive
Chestertown, MD 21620
Phone: 410-778-6057

Photo credit: Mullin/Ashley

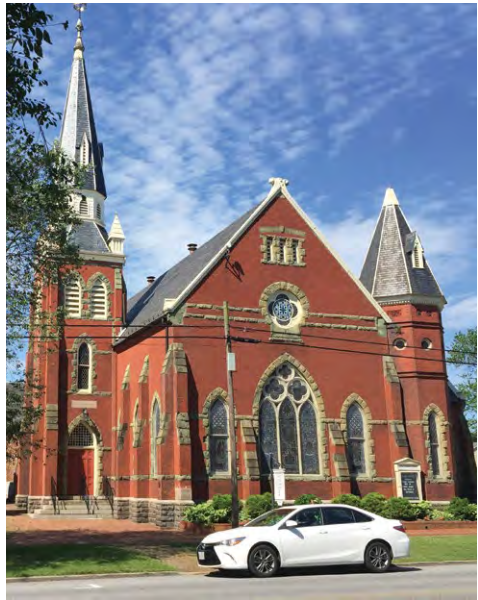


Photo credit: Mullin/Ashley

Sacred Heart Catholic Church
508 High Street
Chestertown, MD 21620
Phone: 410-778-3160

Salem Church Fairlee
23000 Old Fairlee Road
Chestertown, MD 21620
Phone: 410-778-9130

St. Paul's of Kent
7579 Sandy Bottom Road
Chestertown, MD 21620
Phone: 410-778-1540

Trinity Lutheran Church
101 Greenwood Avenue
Chestertown, MD 21620
Phone: 410-778-2744

Unitarian Universalist Fellowship of the Chester River
914 Gateway Drive
Chestertown, MD 21620
Phone: 410-778-3440

Word of God Ministry
819 High Street
Chestertown, MD 21620
Phone: 410-810-0688

Crumpton

Crumpton United Methodist Church
115 2nd Street
Crumpton, MD 21628
Phone: 410-928-3357

Galena

Eastern Shore Bible Church
13984 Gregg Neck Road
Galena, MD 21635
Phone: 410-648-6744

Olivet Pentecostal Church of Love
31579 Galena Sassafras Road
Galena, MD 21635
Phone: 410-648-5510

Olivet United Methodist Church
115 S. Main Street
Galena, MD 21635
Phone: 443-877-5391

St. Dennis Catholic Church
153 N. Main Street
Galena, MD 21635
Phone: 410-648-5145

Kennedyville

Calvary Chapel of Chestertown
11015 Augustine Herman Highway
Kennedyville, MD 21645
Phone: 410-348-5702

Kennedyville United Methodist Church
12008 Augustine Herman Hwy.
Kennedyville, MD 21645
Phone: 410-348-5502

Shrewsbury Parish Church
12824 Shrewsbury Church Road
Kennedyville, MD 21645
Phone: 410-348-5944

Strike First Pentacostal Church
Rt. 213 & Creamery Road
11925 Augustine Herman Highway
Kennedyville, MD 21645
Phone: 410-348-2313

Lynch

Lynch United Methodist Church
Lynch Road
Lynch, MD 21678

Massey

St. Clements Episcopal Church
32940 Maryland Line Road
Massey, MD 21650
Phone: 410-928-5051

Millington

Asbury United Methodist Church
10769 Chesterville Forest Road
Millington, MD 21651
Phone: 410-928-3703

Faith Unity Fellowship
31850 Millington Road
Millington, MD 21651
Phone: 410-778-9976

Faith Unity Fellowship Ministries
116 Liberty Lane, Chestertown
410-778-4300

Graves Chapel UAME
10280 Big Stone Road
Millington, MD 21651
Phone: 410-928-3736

Harmony Christian Church
108 Legion Road
Millington, MD 21651
Phone: 410-928-9955

John Wesley United Methodist Church
430 Cypress Street
Millington, MD 21651
Phone: 410-928-5245

Mt. Pleasant Church
1701 Dudley Corners Road
Millington, MD 21651
Phone: 410-928-5161

Work in Progress Ministries
104 Legion Road
Millington, MD 21651
Phone: 410-928-6085

Rock Hall

Holy Trinity AME Church
22072 Martin Wagner
Rock Hall, MD 21661
Phone: 410-639-2521

Raum Chapel
5272 Skinners Neck Road
6190 Rock Hall Road
Rock Hall, MD 21661
410-639-2144

Rock Hall Church of God
6528 Rock Hall Road
Rock Hall, MD 21661
Phone: 410-639-9002



Home Of The Brave!

As the world responds to COVID-19, the UM Shore Medical Center at Chestertown is working hard to protect and care for our patients, visitors, staff and community.

Every day, our frontline workforce, including physicians, nurses and the ancillary staff of technicians, therapists, pharmacists, registrars, maintenance, etc., demonstrate heartfelt compassion, bravery and most importantly their absolute commitment to our community's health. In every sense of the word, they are heroes!

Charitable gifts help make much of your hospital's state-of-the-art medical equipment possible, which our exceptional staff depend on to help care for you!

Please consider making your gift today!



www.umcrhf.org • (410) 810-5660

Rock Hall Seventh Day Adventist Church
21366 Sharp Street
Rock Hall, MD 21661
Phone: 410-639-2926

Rock Hall United Methodist Church
5730 Main Street
Rock Hall, MD 21661
Phone: 410-639-2144

St. John's Catholic Church
5585 North Main Street
Rock Hall, MD 21661
Phone: 410-778-3160

Wesley Chapel Church
6065 Rock Hall Road
Rock Hall, MD 21661
Phone: 410-639-7181

Still Pond

RMt. Zion United Methodist Church
13720-13640 MD-292
Still Pond, MD 21667

NCCOL United Methodist Church
Rt. 292
Still Pond, MD 21667
Phone: 410-348-5002

Worton

Christ Church at I.U.
25238 Lambs Meadow Road
Worton, MD 21678

Mt. Olive AME Church
24840 Lambs Meadow Road
Worton, MD 21678
Phone: 410-778-3328

New Christian Chapel of Love
26826 Big Woods Road
Worton, MD 21678
Phone: 410-348-2272

St. George United Methodist Church
11730 Saint James Newtown Road
Worton, MD 21678
Phone: 410-810-0301

St. James United Methodist Church
St. James & Newtown Road
Worton, MD 21678
Phone: 410-778-3498

Union Colemans Corner United Methodist Church
13223 Wyble Road
Worton, MD 21678
Phone: 410-348-5902

Worton United Methodist Church
10756 Worton Road
Worton, MD 21678
Phone: 410-648-5212



MEMBERSHIP BUSINESS CATEGORY LISTING

Agribusiness

Chesapeake Farms

Mark Conner
7319 Remington Drive
Chestertown, MD 21620
410-778-8402
Mark.C.Conner@corteva.com
www.corteva.us/Resources/chesapeake-farms.html

Grand View Farm

Pat Langenfelder
11974 Blacks Station Road
Kennedyville, MD 21645
410-348-5505
soooo43@gmail.com
www.langenfelderpork.com

Harborview Farms

Christy Hill
5376 Eastern Neck Road
Rock Hall, MD 21661
410-639-7844
christy@baybroadband.net
www.harborviewfarms.net

Hickman Farm Management

Joe Hickman
10057 Perkins Hill Road
Chestertown, MD 21620
410-778-9122
francisjhickman@gmail.com

MidAtlantic Farm Credit

Sharon Redding
102 Morgnec Road
Chestertown, MD 21620
410-778-0757
sredding@mafc.com
www.mafc.com
See ad on this page

Red Acres Hydroponics

Bryan Williams
25367 Lambs Meadow Road
Worton, MD 21678
410-778-1687
Bryan@RedAcresHydro.com
www.redacreshydro.com

Wildly Native Flower Farm

Liza Goetz
7060 Broad Neck Road
Chestertown, MD 21620
443-457-8475
wildlynative@gmail.com
www.wildlynativeflowerfarm.com

Animal Care

Al's Animals, LLC

Alan Moghul
P.O. Box 876
Chestertown, MD 21620
443-282-0960
info@AlsAnimals.com
www.alsanimals.com

Eastern Shore Animal Hospital, LLC

Daniel Peck
6327 Church Hill Road
Chestertown, MD 21620
410-778-1200
esah@atlanticbbs.net
www.easternshoreanimalhosp.com



UNLOCK THE POSSIBILITIES



Homeownership doesn't have to be out of your reach.
Let Farm Credit finance your perfect piece of quiet.

Contact us today to discuss your options.



FARM CREDIT
888.339.3334 | mafc.com | [f](#) [t](#) [i](#) [c](#)

M3 architecture

Residential and Commercial
design and consultation



Max E. Ruehrmund, III, AIA

Phone: (410) 708-0659
Email: maxr3@verizon.net

30+ years' experience
working closely with Eastern Shore clients
to create great solutions for their
lifestyles and budgets.

See more projects on Houzz and Facebook!

High Street Veterinary Practice, LLC

Rachel Mowell
841 High Street
Chestertown, MD 21620
410-778-2188
mowellr@gmail.com
www.highstreetvetpractice.com

The Animal Care Shelter for Kent County

Richard Keaveney
10720 Augustine Herman Highway
Chestertown, MD 21620
410-778-3648
rkeaveney@gmail.com
www.kenthumane.com

Apartments / Rentals

Colonial Manor Apartments

Lee Davis
100 Hadaway Drive
Chestertown, MD 21620
410-778-3049
nlbeckkentcrossingapts@gmail.com
www.chestertownapartments.com

Kent Crossing Apartments

Nancy Beck
101 Morgnec Road
Chestertown, MD 21620
410-778-3049
nlbeckkentcrossingapts@gmail.com
www.chestertownapartments.com

LEADing edge inspections

Deborah Jill Payne
24291 Chestertown Rd.
Chestertown, MD 21620
443-480-3755
dj.payne@hotmail.com
www.facebook.com/Www.jillpayneinspections

Arborist

Bartlett Tree Experts

Judge Anthony
204 Old Love Point Road
Stevensville, MD 21666
410-708-3385
janthony@bartlett.com
www.bartlett.com

Architects

John Hutchison Architecture

John Hutchinson
635 High Street
Chestertown, MD 21620
410-449-0466
johnhutcharch@gmail.com
www.johnhutcharch.com

M3 Architecture

Max Ruehrmund, III
6546 Tolchester Road
Rock Hall, MD 21661
410-708-0659
maxr3@verizon.net
www.facebook.com/M3-Architect-1430261510617396
See ad on page 58

South Fork Studio Landscape Architecture, Inc.

Miles Barnard
10810 Cliff Rd
Chestertown, MD 21620
410-778-1098
miles@southforkstudio.com
www.southforkstudio.com

Art Galleries/Dealers

Chestertown RiverArts

Maria Wood
315 High Street, Suite 106
Chestertown, MD 21620
410-778-6300
info@chestertownriverarts.org
www.community.chestertownriverarts.org

Les Poissons Gallery

Rusty Poisson
207 Silver Heel Road
Chestertown, MD 21620
410-708-0017
lespoissonsgallery@gmail.com
www.lespoissonsgallery.com

Massoniart - Carla Massoni Gallery

Carla Massoni
203 High Street
Chestertown, MD 21620
410-778-7330
cmassoni@me.com
www.massoniart.com

Reflective Photography

Michelle Gladu
5761 Main Street, P.O. Box 434
Rock Hall, MD 21661
410-639-4366
michelle@reflectivephotography.us
www.reflectivephotography.us

Automotive

American Rock Hall Service Center

Steve Lepnard
195 Defense Highway
Annapolis, MD 21401
443-446-3100
Service@AmericanRockHall.com
www.AmericanRockHall.com

Chestertown Auto Plus & Marine

Philip DeMarco
711 Washington Avenue, #8
Chestertown, MD 21620
410-778-2566
pjd12@atlanticcbbn.net
www.chestertowngoodyear.com

K & L Services, Inc.

David Keating
609 High Street
Chestertown, MD 21620
410-778-0241
knautoservices@yahoo.com
www.knlservicesautorepair.com

Ramsey GMC, Inc.

Tina Zabetakis
6716 Church Hill Road
Chestertown, MD 21620
410-778-2484
ramsey32@verizon.net
www.ramseygmc.com

Todd's Body Shop, Inc.

Todd Smith
416 Morgnec Road
Chestertown, MD 21620
410-778-5868
tbsmith7@verizon.net
www.toddsbodyshopinc.com

Building / Construction Materials & Supplies

David A. Bramble, Inc.

Megan Owings
705 Morgnec Road
Chestertown, MD 21620
410-778-3023
megan@davidabrambleinc.com
www.davidabrambleinc.com
See ad on page 58

Gillespie & Son, Inc.

Jim Gillespie
100 Dixon Drive
Chestertown, MD 21620
410-778-0900
jimg@gillespieandson.com
www.gillespieandson.com
See ad on this page



READY MIX CONCRETE

Rebar
Reinforcing Wire
Expansion Joint
Exposed Aggregate

LANDSCAPING PRODUCTS

Retaining Wall Systems
Paving Bricks & Stones
Stones & Gravels

MASONRY PRODUCTS

Lightweight Blocks
Bagged Goods
Access Panels
Vents
Sand
Accessories

STORE PRODUCTS

Levels
Trowels & Floats
Wheelbarrows
Shovels & Rakes
Tarps
Sealing Compounds
Patching Materials
Transits
Hand Tools
Silt Fence
Grade Stakes
Drainage Pipe
Drainage Fabric

PRECAST CONCRETE PRODUCTS

Septic Tanks
Distribution Boxes
Dosing Chambers
Grease Traps
Curb Stops
Boat Ramps
Goose Pits

www.gillespieandson.com

410-778-0900 • 410-778-2304

PO Box 450 • 100 Dixon Drive
Chestertown, Maryland 21620

GENERAL CONTRACTORS
DAVID A.
BRAMBLE
INC
CHESTERTOWN, MD

www.davidabrambleinc.com

Site Contractor

- Hot Mix Asphalt Paving
- Stormdrain, Water, and Sewer
- Mass Excavation
- Site Grading

Retail Sales

- Hot Mix Asphalt
- Recycled Materials
- Sand, Gravel, and Topsoil

Office Locations:

Home Office
Servicing Upper Shore
705 Morgnec Rd
Chestertown, MD
410-778-3023
Salisbury Office
Servicing Lower Shore
28101 Old Eden Rd
Eden, MD
410-742-8484

Hot Mix Plant Locations:

Wye Mills Plant
Wye Mills, MD
410-758-3677
Massey Plant
Conveniently located 13 miles
south of Middletown, DE
Massey, MD
410-928-3870



2022 Bronze Sponsor

Mind your own business!

We can help.

SCORE's local, seasoned professionals from diverse business backgrounds will help you plan and launch a new business or grow your current one.

It's free. It's confidential.



Upper Shore SCORE
410-778-2969
uppershore.score.org



Commercial & Residential Construction

www.krmcostruction.com

410-810-1393

2022 Bronze Sponsor

Business Services

Assist with H.R.

Jean Leverage
13825 Still Pond Road
Still Pond, MD 21667
410-708-1678
assistwithhr@gmail.com

Community Mediation Upper Shore, Inc.

Penni Walker Doyle
100 N. Cross Street
Chestertown, MD 21620
410-810-9188
info@CMUSmediation.org
www.cmusmediation.org

Eastern Shore Business Services, LLC

Betta Fraccaroli
8979 Orchard Drive
Chestertown, MD 21620
410-708-3875
esbizserv@gmail.com
www.esbizserv.com

LEADing edge inspections

Deborah Jill Payne
24291 Chestertown Rd.
Chestertown, MD 21620
443-480-3755
dj.payne@hotmail.com
www.facebook.com/www.jillpayneinspections

RCM Strategic Consulting

Rebecca Murphy
635 High Street
Chestertown, MD 21620
443-840-0586
rcmstrategicconsulting@gmail.com
www.rcmstrategicconsulting.com

SCORE Upper Shore Chapter 670

122 N. Cross Street
Chestertown, MD 21620
Tim Abeska, Chairman
timothy.abeska@scorevolunteer.org
www.score.org
See ad on this page

Small Business Development Center/SBDC

Richard Loeffler
Economic Development Center, Chesapeake College
Wye Mills, MD 21679
410-827-5304
rloeffler@chesapeake.edu
www.salisbury.edu/sbdc

The UPS Store

David LeClair
503 Washington Avenue
Chestertown, MD 21620
410-778-9446
store1198@theupsstore.com
www.theupsstorelocal.com/1198

WCTR Radio

Leslie Sea
231 Flatland Rd
Chestertown, MD 21620
410-775-WCTR
wctr.leslie.sea@gmail.com
www.wctr.com

Car Rentals

U-SAVE Car & Truck Rental

Philip DeMarco
6407 Church Hill Road
Chestertown, MD 21620
410-778-3036
pjd12@atlanticbbn.net

Cleaning Services

Marigold Staffing Services | Cleaning

Sherlene Stevens
503 Washington Avenue, #315
Chestertown, MD 21620
410-671-5372
cleaningservicesinquiry@gmail.com
marigoldstaffingservices.weebly.com

Merry Maids

Chelsea Goodnow
8161 Teal Drive, Suite 203
Easton, MD 21601
410-749-0100
www.merrymaids.com

Mid-Atlantic Facility Services, LLC

Louis Costanzo
P.O. Box 942
Chestertown, MD 21620
410-793-7172
louis@mafslc.com
www.mafslc.com

Commercial Construction

KRM Construction Company, LLC

Kenny Gray
913 Washington Avenue
Chestertown, MD 21620
410-810-1393
kgray@krmconstruction.com
www.krmconstruction.com
See ad on page 19 and 60

Commercial Printing

Delmarva Printing, Inc.

Bill Contarino
2110 Windsor Drive
Salisbury, MD 21801
410-912-0980
bill@delmarvaprinting.com
www.delmarvaprinting.com

Communications

Atlantic Broadband

Georg Zimmerman
330 Drummer Drive
Grasonville, MD 21638
410-827-6441, Ext. 4429
gzimmerman@atlanticbb.com
www.atlanticbb.com

Maryland Broadband Cooperative

Tyler Patton
2129A Northwood Drive
Salisbury, MD 21801
410-341-6322
tpatton@mdbc.us
www.mdbc.us

Talkie Communications

Andre DeMattia
99 Talbot Boulevard
Chestertown, MD 21620
844-5talkie (844-582-5543)
Sales@TalkieFiber.com
www.talkiefiber.com
See ad on this page

Think Big Networks, LLC

Elissa Bell
519 Morgnec Road
Chestertown, MD 21620
888-318-1372
Sales@ThinkBigNets.com
www.thinkbignets.com

WCTR Radio

Leslie Sea
231 Flatland Rd
Chestertown, MD 21620
410-775-WCTR
wctr.leslie.sea@gmail.com
www.wctr.com

Computer Technology

BAON Enterprises

Scott Gornall
525 N Kent Street
Chestertown, MD 21620
443-643-6000
baon@baonenterprises.com
www.baonenterprises.com



2022 Diamond Sponsor



Your Business IT Solutions Partner

- End User Remote Helpdesk Support
- Server & Desktop Management
- Backup as a Service
- 24/7 Monitoring
- Networking
- Servers
- Wireless
- Managed Services
- Cybersecurity
- Office 365 Backup



BayTechTeam.com • 443.282.0282
Chestertown, Maryland

Bay Tech Team

Joe Dalto
105 Pine Tree Road
Chestertown, MD 21620
443-282-0282
info@baytechteam.com
www.baytechteam.com
See ad on this page

Consulting

Assist with H.R.

Jean Leverage
13825 Still Pond Road
Still Pond, MD 21667
410-708-1678
assistwithhr@gmail.com

Encore Health Management & Advisory Services

Stewart Seitz
25803 Collins Avenue
Chestertown, MD 21620
410-271-1617
seitz0724@gmail.com
www.encorehealthcareadvisors.com

Heritage Strategies, LLC

Elizabeth Watson
P.O. Box 277
Birchrunville, PA 19421
410-725-1272
[aelizabethwatson@gmail.com](mailto:aelizabhwatson@gmail.com)
www.heritagestrategies.com

James M. Luff Consulting

Jim Luff
8978 Orchard Drive
Chestertown, MD 21620
941-376-1922
jml24706@yahoo.com

KVN Partners

Katharine Van Name
108 Spring Avenue
Chestertown, MD 21620
410-991-2662
kate@kvnpartners.com
www.kvnpartners.com

LEADing edge inspections

Deborah Jill Payne
24291 Chestertown Rd.
Chestertown, MD 21620
443-480-3755
dj.payne@hotmail.com
www.facebook.com/Wwww.jillpayneinspections

M3 Architecture

Max Ruehrmund, III
6546 Tolchester Road
Rock Hall, MD 21661
410-708-0659
maxr3@verizon.net
www.facebook.com/M3-Architecture-1430261510617396
See ad on page 58

RCM Strategic Consulting

Rebecca Murphy
635 High Street
Chestertown, MD 21620
443-840-0586
rcmstrategicconsulting@gmail.com
www.rcmstrategicconsulting.com

Small Business Development Center/SBDC

Richard Loeffler
Economic Development Center, Chesapeake College
Wye Mills, MD 21679
410-827-5304
rloeffler@chesapeake.edu
www.salisbury.edu/sbdc

Sunburst Support LLC

Brian Barrett
4 Byford Court
Chestertown, MD 21620
240-676-6162
brian@sunburstsupport.com
www.sunburstsupport.com

WCTR Radio

Leslie Sea
231 Flatland Rd
Chestertown, MD 21620
410-775-WCTR
wctr.leslie.sea@gmail.com
www.wctr.com

Contractors

A Plus Sanitation, LLC

Bill Skinner
P.O. Box 72
Chestertown, MD 21620
410-708-5301
aplussanitation18@gmail.com
www.aplussanitation.com
See ad on page 63

A-Plus Septic Services, LLC

Wayne Edwards
13083 Hickory Drive
Galena, MD 21635
410-778-6629
aplussepticsservice@yahoo.com
www.aplussepticllc.com
See ad on page 63

Alton E. Darling Construction Company

Alton Darling
6506 Church Hill Road
Chestertown, MD 21620
410-810-0961
darling_construction@verizon.net
www.aedarling.com
See ad on page 64

Blue Heron Contracting, LLC

Torr Howell
114 S. Cross Street
Chestertown, MD 21620
410-810-3850
thowell@blueheroncontracting.com
www.blueheroncontracting.com
See ad on page 12

Chesapeake Boat Lift Services, LLC

Duncan Welsh
7015 Church Hill Road
Chestertown, MD 21620
410-708-1409
duncan@chesapeakeboatlifts.com
www.chesapeakeboatlifts.com
See ad on page 84

A-Plus Sanitation, LLC

Bill Skinner

P.O. Box 72
Chestertown, MD 21620

410-778-9145
443-480-6382
aplussanitation18@gmail.com



A-PLUS SEPTIC SERVICE

LOCALLY OWNED AND OPERATED

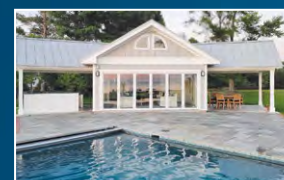
- Septic Tank Pumping
- Onsite Septic System Service and Repair
- Licensed Septic Inspections
- Sewer Line Camera Inspection
- Line Jetting

Proudly Serving Kent & Queen Anne's Counties.



13083 Hickory Drive, Galena, MD 21635 • 410-778-6629 • aplussepticllc.com

HORSEY CONSTRUCTION LLC.



For 40 years offering affordable custom high-end construction for all new and remodeling projects



OWNER: GARY E. HORSEY

- ♦ CUSTOM BUILT HOMES ♦
- ♦ RENOVATIONS ♦
- ♦ ADDITIONS ♦

phone 410-778-4549
fax 410-778-2121



M.H.B. 3502
M.H.I.C. 27771

www.horseyconstruction.com • horseyconst@gmail.com



STARKEY MECHANICAL, INC.

325 CYPRESS ST., MILLINGTON, MD.



HEATING & COOLING

Complete Installation and Service
Specializing in Custom Built Homes
Service Contracts with 24 hr. Emergency Service
CALL # 410-928-5900 / 877-587-5900

www.starkeymech.com

starkeymech@gmail.com

MIKE STARKEY
OWNER

A.E. Darling Construction LLC

New Home Construction / Renovations / Additions / Property Management



Serving Kent, Queen Annes, Talbot, Caroline, and Cecil Counties
6506 Church Hill Rd., Chestertown, MD 21620 • 410-810-0961
darling_construction@verizon.net • www.aedarling.com

Chesapeake Family Flooring, LLC

Bob Schaubert
7306 Church Hill Road
Chestertown, MD 21620
410-778-3181
bobschauber@gmail.com
www.chesapeakefamilyflooring.com

David A. Bramble, Inc.

Megan Owings
705 Morgnec Road
Chestertown, MD 21620
410-778-3023
megan@davidabrambleinc.com
www.davidabrambleinc.com
See ad on page 58

Dependable Pest Management

Clint Lappe
150 Morgnec Road
Chestertown, MD 21620
410-778-5658
alibylappy@msn.com
www.dependablepestmanagement.com

Horsey Construction, LLC

Gary Horsey
23828 Annie Crow Road
Chestertown, MD 21620
410-778-4549
horseyconst@gmail.com
www.horseyconstruction.com
See ad on page 63

KRM Construction Company, LLC

Kenny Gray
913 Washington Avenue
Chestertown, MD 21620
410-810-1393
kgray@krmconstruction.com
www.krmconstruction.com
See ad on page 19 and 60

Montgomery Heating & Cooling

Michael Gibbs
153 Flatland Road
Chestertown, MD 21620
410-778-1212
mheatandcool@gmail.com
www.mheatandcool.com

North Shore Restoration, LLC

Stephen Redding
P.O. Box 398
Galena, MD 21635
888-677-8330
steve.nsr@verizon.net
www.northshorerestoration.net

Owen Excavation, LLC

Christopher Owen
8875 Center Lane
Chestertown, MD 21620
443-350-0498
chris@owenexcavation.com
<https://www.facebook.com/OwenExcavation/>

Smartech Electrical, Inc.

Victor Shepard
6512 Church Hill Road
Chestertown, MD 21620
443-282-0176
admin@smartechelectrical.com
www.smartechelectrical.com

Sparkle Pools, Inc.

Raymond Glaeser, Jr.
6305 Church Hill Road
Chestertown, MD 21620
410-810-2999
raymond@sparklepoolsinc.com
www.sparklepoolsinc.com

Starkey Mechanical, Inc.

Mike Starkey
325 Cypress Street
Millington, MD 21651
410-928-5900
starkeymech@gmail.com
www.starkeymech.com
See ad on this page

Stoltzfus Roofing, Inc.

Marian Stoltzfus
6408 Church Hill Road
Chestertown, MD 21620
410-810-1504
admin@sunrisesolarmd.com
www.stoltzfusroofingmd.com

Distillery

Cassinelli Distilling/Bad Alfred's

Al Cassinelli
323 High Street
Chestertown, MD 21620
443-282-0163
BadAlfredsDistilling@gmail.com
www.badalfreds.com

Education

Character Counts Kent County

Deann Jones
1 Dixon Square
Chestertown, MD 21620
410-708-6617
director@cckentcounty.org
www.cckentmd.org

Chesapeake College

Clifford Coppersmith
1000 College Circle
Wye Mills, MD 21679
410-827-5236
ccoppersmith@chesapeake.edu
www.chesapeake.edu
See ad on page 12

Chestertown Christian Academy

Joseph Baugher
401 Morgnec Road
Chestertown, MD 21620
410-778-5855
info@chestertownchristian.org
www.chestertownchristian.org

Chestertown RiverArts

Maria Wood
315 High Street, Suite 106
Chestertown, MD 21620
410-778-6300
info@chestertownriverarts.org
www.community.chestertownriverarts.org

Echo Hill Outdoor School

Elizabeth McCown
13655 Bloomingneck Road
Worton, MD 21678
410-348-5880
info@ehos.org
www.ehos.org

Friendship Montessori School

Holli Mathison
P.O. Box 6
Worton, MD 21678
410-778-5663
info@friendshipmontessori.org
www.friendshipmontessori.org

Horizons of Kent and Queen Anne's

Amy Crowding
116 South Lynchburg Street, Suite B
Chestertown, MD 21620
410-778-9903
acrowdinghorizons@gmail.com
www.horizonskentqueenannes.org



KENT COUNTY PUBLIC SCHOOLS

Growing a Community of Leaders

3 ELEMENTARY SCHOOLS

Galena, H.H. Garnet & Rock Hall

- UNIVERSAL PRE-K
- CARING ENVIRONMENTS
- SMALL CLASS SIZES
- FIELD TRIPS/OUTDOOR ED
- PERSONALIZED LEARNING
- GARNET & ROCK HALL ARE "COMMUNITY SCHOOLS"



KENT COUNTY MIDDLE SCHOOL

- COMPETITIVE LEARNING ENVIRONMENT
- MUSIC, LANGUAGE, ARTS, NJHS
- AFTER SCHOOL CLUBS & PROGRAMS
- COMMUNITY ENGAGEMENT
- ATHLETICS



KENT COUNTY HIGH SCHOOL

- DUAL HIGH SCHOOL + COLLEGE CREDITS
- 9 CTE PROGRAMS: Agricultural Sciences, Automotive Tech, Radio Broadcasting, Construction Trades, Culinary Arts, Fire & Rescue, Intro to Engineering, Teacher Academy, Nursing
- BLOCK SCHEDULE
- THE ONLY STUDENT RADIO STATION IN MD
- PARTNERSHIPS WITH WASHINGTON COLLEGE, CHESAPEAKE COLLEGE, LOCAL BUSINESSES & ORGANIZATIONS
- ATHLETICS, NHS, ARTS, MARCHING BAND & MORE!

WE NEED YOU!

Become a substitute teacher, donate supplies to a classroom or school, attend sporting events, go to Board of Ed meetings, volunteer to read to a class or student, sign up for career day. Contact Dan Hushion, Supervisor of HR at 410-778-7135 or DHUSHION@KENT.K12.MD.US.

Kent County Public Schools
5608 Boundary Ave | Rock Hall, MD 21661b | 410-778-1595 | KENT.K12.MD.US

Kent County Public Schools

Dr. Karen Couch
5608 Boundary Avenue
Rock Hall, MD 21661
410-778-7137
kcouch@kent.k12.md.us
www.kent.k12.md.us
See ad on this page and 44-45

Kent School, Inc.

Nancy Mugele
6788 Wilkins Lane
Chestertown, MD 21620
410-778-4100
nmugele@kentschool.org
www.kentschool.org
See ad on page 41

Anthony, Judge & Ware

Certified Public Accountants

James A. Judge, CPA

Arraminta Ware, CPA

Michelle L. Pepper, EA



Services

- Income Tax Return Preparation
- Bookkeeping Services
 - Accounting
- Management Advisory Services
 - Complete Payroll Services
- Member:
QuickBooks® Professional
Advisors Program



925 Gateway Drive
P. O. Box 447
Chestertown, MD 21620

Phone: **410.778.0164**

Fax: **410.778.6299**

®Registered trademark of Intuit Inc.

Modern Stone Age Kitchen

Christina Schindler
236 Cannon Street
Chestertown, MD 21620
908-627-1573
christina@eatlikeahuman.com
www.modernstoneagekitchen.com

Radcliffe Creek School

Kim Nistler
201 Talbot Boulevard
Chestertown, MD 21620
410-778-8150
info@radcliffecreekschool.org
www.radcliffecreekschool.org

The Gunston School, Inc.

John Lewis
911 Gunston Road
Centreville, MD 21617
410-758-0620
jlewis@gunston.org
www.gunston.org

UM Extension, Kent County

Dr. Paul Rickert
709 Morgnec Road, Suite 202
Chestertown, MD 21620
410-778-1661
prickert@umd.edu
www.extension.umd.edu/kent-county

Washington College

Victor Sensenig
300 Washington Avenue
Chestertown, MD 21620
410-778-2800
vsensenig2@washcoll.edu
www.washcoll.edu

Wye River Upper School

Tracie Spence
316 S. Commerce Street
Centreville, MD 21617
410-758-2922
traciespence@wyeriverupperschool.org
www.wyeriverupperschool.org

Electric Companies

Sunrise Solar, Inc.

Katie Jester
6408 Church Hill Road
Chestertown, MD 21620
410-810-1504
katie@sunrisesolarmd.com
www.sunrisesolarmd.com

Energy Services

Avalon Energy Services, LLC

Jim McDonnell
P.O. Box 220
Galena, MD 21635
888-484-8096
jmcdonnell@avalonenergy.us
www.avalonenergy.us

Engineers

Davis, Moore, Shearon & Associates, LLC

Kevin Shearon
P.O. Box 80
Centreville, MD 21617
443-262-9130
kjs@dmsandassociates.com
www.dmsandassociates.com
See ad on page 67

Financial Services

Advisors Financial, Inc.

Joseph Van Name
8391 Old Courthouse Road, Suite 205
Vienna, VA 22182
703-883-0300
afi@advisorsfinancial.com
www.advisorsfinancial.com

Anthony, Judge & Ware, LLC

Arraminta Ware
925 Gateway Drive
Chestertown, MD 21620
410-778-0164
aware@ajwcpa.com
See ad on this page

BB&T, now Truist

Amanda Wallace
501 Washington Avenue
Chestertown, MD 21620
410-778-2900
amanda.wallace@bbandt.com
www.bbt.com

Cedar Chase Consulting

Robert Miller
106 Spring Avenue
Chestertown, MD 21620
240-475-1512
robert@cedarchaseconsulting.com
www.cedarchaseconsulting.com

Chesapeake Bank and Trust Company

Kristen Owen
245 High Street
Chestertown, MD 21620
410-778-1600
kowen@chesapeakeitrust.com
www.chesapeakeitrust.com
See ad on page 37

Chesapeake Investment Advisors, Inc.

Martin Knight
106 Spring Avenue
Chestertown, MD 21620
410-810-0735
mknight@chesadvisors.com
www.chesadvisors.com

Fiduciary's Friend, LLC, The

Sally Camp
119 A-4 North Main Street
Galena, MD 21635
410-648-6866
sally@fiduciarysfriend.com
www.fiduciarysfriend.com

First Home Mortgage

Tom Draper
1200 Butterworth Court Lower Level Unit A
Stevensville, MD 21666
443-786-9887
tdraper@firsthome.com
www.firsthome.com

H & R Block

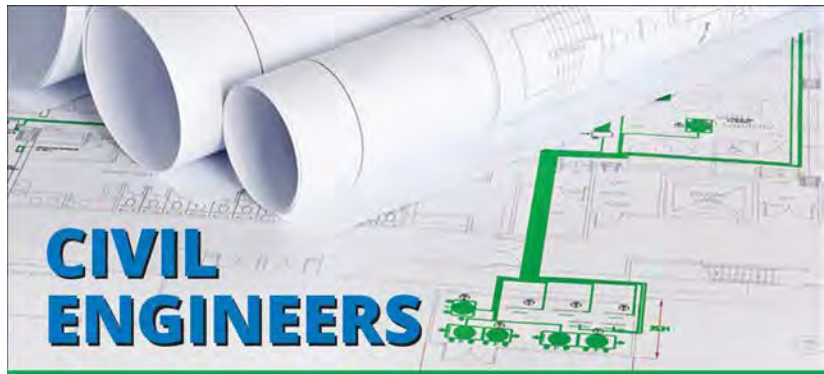
Cheryl Hurd
301 Morgnec Road
Chestertown, MD 21620
410-778-4272
cheryl.hurd@hrblock.com
www.hrblock.com/local-tax-offices/maryland/chestertown/301-morgnec-rd/19398

Maryland Capital Enterprises, Inc.

Maurice Ames
P.O. Box 213
Salisbury, MD 21803
410-546-1900
info@marylandcapital.org
www.marylandcapital.org

MidAtlantic Farm Credit

Sharon Redding
102 Morgnec Road
Chestertown, MD 21620
410-778-0757
sredding@mafc.com
www.mafc.com
See ad on page 57



- Design and Consulting
- Environmental Assessments
- Buffer Management Plans
- Land Planning
- Surveying
- LEED Certified



DMSandAssociates.com • 443.262.9130

Serving Maryland's Eastern Shore

2022 Silver Sponsor

PNC Bank

Heather McCay
803 Washington Avenue
Chestertown, MD 21620
410-778-7541
heather.mccay@pnc.com
www.pnc.com
See ad on page 27

Queenstown Bank of Maryland

Kathleen Kendall
7101 Main Street
Queenstown, MD 21658
410-827-8881
kkendall@queenstownbank.com
www.queenstownbank.com

Radcliffe Corporate Services

Randy Cooper
870 High Street, Suite 1
Chestertown, MD 21620
410-778-1099
rcooper@radcliffecorp.com
www.radcliffecorp.com

Shore United Bank

Diane Brandt
899 Washington Avenue
Chestertown, MD 21620
410-810-0591
diane.brandt@shoreunitedbank.com
www.shoreunitedbank.com
See ad on page 13

The Macielag Group Merrill Wealth Management

John Macielag
114 Bay Street, Bldg. D
Easton, MD 21601
800-380-8614
john_macielag@ml.com
www.fa.ml.com/john_macielag

The Peoples Bank

Meghan Livie
100 Spring Avenue
Chestertown, MD 21620
410-778-3500
mlivie@pbkc.com
www.pbkc.com
See ad on page 34

Valliant Wealth Strategies

Nicole Caringal
110 S. Queen Street
Chestertown, MD 21620
410-810-0800
Nicole.Caringal@RaymondJames.com
www.valliantwealth.com

Wye Financial Partners

Talli Oxnam
16 N. Washington Street, Suite #1
Easton, MD 21601
410-763-8543
talli.oxnam@wyefinancial.com
www.WyeFinancialPartners.com



Hank Starkey, Agent LUTCF

948 Washington Avenue
Chestertown, MD 21620-3322
Bus 410 778 0647
Fax 410 778 4949
www.hankstarkey.com
hank@hankstarkey.com



The greatest compliment you can give is a referral.



ANTHONY'S FLOWERS & LANDSCAPING, INC.

7200 Church Hill Road
Chestertown, Maryland 21620

*Complete Landscaping & Hardscaping Services
Flowers for all occasions*

TOM AND BETSY HERR

PHONE 410-778-2525

Insurance

Assist with H.R.

Jean Leverage
13825 Still Pond Road
Still Pond, MD 21667
410-708-1678
assistwithhr@gmail.com

Avery Hall Benefit Solutions, Inc.

Cindy Whaley
408 N. Washington Street, Suite A
Easton, MD 21601
410-822-7300
info@averyhall.com
www.averyhall.com

Avon Dixon Insurance Agency

Ginny Biondi
2977 4-H Park Road
Centreville, MD 21617
410-758-0757
ginny.biondi@avondixon.com
www.avondixon.com

Dukes-Moore Insurance Agency

Michael Moore
205 High Street
Chestertown, MD 21620
410-778-2346
mrmoore@dukesmoore.com
www.dukesmoore.com

Fleetwood Insurance Group

Creg Fleetwood
100 Talbot Boulevard
Chestertown, MD 21620
410-778-2260
cfleetwood@fleetwoodins.com
www.fleetwoodinsurancegroup.com

Hogans Agency, Inc.

Kathryn Hogans
Historic Stam's Hall, 220 High Street
Chestertown, MD 21620
410-778-1665
matt@hogans.com
www.hogans.com

Riddleberger Insurance Agency

Matthew Riddleberger
7332 Church Hill Road
Chestertown, MD 21620
410-778-5700
mriddleberger@riddlebergerins.com
www.riddlebergerinsurance.com

State Farm Insurance

Hank Starkey
948 Washington Avenue
Chestertown, MD 21620
410-778-0647
hank@hankstarkey.com
www.hankstarkey.com
See ad on this page

Land Trust

Eastern Shore Land Conservancy

Owen Bailey
114 S. Washington Street, Suite 101
Easton, MD 21601
410-690-4603
obailey@eslc.org
www.eslc.org

Landscape & Nursery

Angelica Nurseries, Inc.

Bernard Kohl, Jr.
11129 Locust Grove Road
Kennedyville, MD 21645
410-928-3111
bkohl@angelicanurseries.com
www.angelicanurseries.com

Anthony's Flowers & Landscaping, Inc.

Betsy Herr
7200 Church Hill Road
Chestertown, MD 21620
410-778-2525
erherr50@gmail.com
www.anthonysflowers.net
See ad on this page

Chester River Landscaping/Neff & Son, Inc.

Stormy Neff
301 Clovelly Lane
Chestertown, MD 21620
410-778-9686
stormy@chesterriverlandscaping.com
www.chesterriverlandscaping.com

Greenscapes Land Care, LLC

Casey Hurd
11427 Still Pond Road
Worton, MD 21678
410-348-2500
info@greenscapeslandcare.net
www.greenscapeslandcare.net

Unity Landscape Design/Build, Inc.

Sandy Appel
3621 Church Hill Road
Church Hill, MD 21623
410-556-6010
www.unitylandscape.com

Legal Services

Law Office of Thomas N. Yeager

Thomas Yeager
203 Maple Avenue
Chestertown, MD 21620
410-810-0428
info@yeagerlawoffice.com
www.yeagerlawoffice.net

Leveque IP Law, P.C.

Michelle Leveque
241 E. 4th Street
Frederick, MD 21701
301-668-3073
info@levequeip.com
www.levequeintellectualpropertylaw.com

MacLeod Law Group, LLC

Charles MacLeod
110 N. Cross Street
Chestertown, MD 21620
410-810-1381
info@mlg-lawyers.com
www.mlg-lawyers.com
See ad on page 71

Mid-Shore Pro Bono, Inc.

Sandy Brown
8 South West Street
Easton, MD 21601
410-690-8128
info@midshoreprobono.org
www.midshoreprobono.org

Rasin, Wootton & Hurd, LLC

Kathleen Hurd
207 Court Street
Chestertown, MD 21620
410-778-3515
khurd@rwlawoffice.com
www.rwlawoffice.com

Library

Kent County Public Library

Christopher Walmsley
408 High Street
Chestertown, MD 21620
410-778 3636
jadams@kent.lib.md.us
www.kentcountylibrary.org

Lodging

Brampton Bed and Breakfast Inn

David Reinhart
25227 Chestertown Road
Chestertown, MD 21620
410-778-1860
innkeeper@bramptoninn.com
www.bramptoninn.com
See ad on outside back cover

Brittland Estates

Natalie Turner
205 Cannon Street, Ste. 1
Chestertown, MD 21620
443-282-0860
nturner@brittlandestates.com
www.brittlandestates.com

Comfort Inn & Suites

Cathy Sinvil
150 Scheeler Road
Chestertown, MD 21620
410-778-0778
sathakrar@neemahospitality.com
www.choicehotels.com/maryland/chestertown/
comfort-inn-hotels/md364

Great Oak Manor

Holly McKee
10568 Cliff Road
Chestertown, MD 21620
410-778-5943
info@greatoakmd.com
www.greatoakmd.com

Haven Harbour Marina Resorts

Charlie Petosa
20880 Rock Hall Avenue
Rock Hall, MD 21661
410-778-6697
email@havenharbour.com
www.havenharbour.com
See ad on page 73

Inn at Huntingfield Creek, LLC

Jim & Joanne Rich
4928 Eastern Neck Road
Rock Hall, MD 21661
410-639-7779
huntingfieldcreek@verizon.net
www.huntingfield.com



MACLEOD
LAW GROUP LLC

Serving clients across the Eastern Shore

CHESTERTOWN OFFICE
110 N. CROSS STREET
CHESTERTOWN, MARYLAND 21620

DENTON OFFICE
300 MARKET STREET, SUITE 104
DENTON, MARYLAND 21629

REAL ESTATE • BUSINESS • GENERAL COUNSEL

410.810.1381

www.mlg-lawyers.com



**SPRING COVE
MARINA**
ROCK HALL, MD
(410) 639-2110 • SPRINGCOVE.US

- SEASONAL DOCKAGE
- CATAMARANS WELCOME
- WATERFRONT WEDDINGS
- HIGH SPEED WIFI
- CAPTAIN'S LOUNGE
- BREATHTAKING SUNSETS

Bob Jacob
Co-Founder & CEO
bjacob@chesapeakecnc.com

**CHESAPEAKE
CNC**
Manufacturing Center, Inc.

Chesapeake CNC

Manufacturing Center Inc.
25498 Mary Morris Road
Chestertown, MD 21620
www.chesapeakecnc.com

Swiss Screw Machining
Phone: 410-778-2233
Fax: 410-778-2114

ISO 9001 Certified Quality System • ITAR Compliant

Kent County Lodging Association

Joanne Rich
4928 Eastern Neck Road
Rock Hall, MD 21661
410-639-7779
huntingfieldcreek@verizon.net
www.kentcounty.com/lodging

Kent Crossing Apartments

Nancy Beck
101 Morgnec Road
Chestertown, MD 21620
410-778-3049
nlbeckkentcrossingapts@gmail.com
www.chestertownapartments.com

Kitty Knight, LLC

Sueann Hall
14028 Augustine Herman Highway
Georgetown, MD 21930
410-648-5200
shall@kittyknight.com
www.kittyknight.com

Osprey Point Inn, Restaurant & Marina

Terry Nelson
20786 Rock Hall Avenue
Rock Hall, MD 21661
410-639-2194
innkeeper@ospreypoint.com
www.ospreypoint.com

Rock Hall Landing Marina & Mariners Motel

Chris Bovee
5657 South Hawthorne Avenue
Rock Hall, MD 21661
410-639-2224
dockmaster@rockhalllanding.com
www.rockhalllanding.com

SHM Great Oak Landing Marina LLC

Brenda Wright
22170 Great Oak Landing Road
Chestertown, MD 21620
410-778-5007
bwright@shmarinas.com
www.shmarinas.com/locations/safe-harbor-great-oak-landing

Sunset Lodge

Meagan Wick
4480 Eastern Neck Road
Rock Hall, MD 21661
410-639-7846
info@sunsetlodgeonthebay.com
www.sunsetlodgeonthebay.com

White Swan Tavern, The

Sarah Crump
231 High Street
Chestertown, MD 21620
410-778-2300
info@whiteswantavern.com
www.whiteswantavern.com

Manufacturing

Chesapeake CNC Manufacturing

Bob Jacob
25498 Mary Morris Road
Chestertown, MD 21620
410-778-2233
bjacob@chesapeakecnc.com
www.chesapeakecnc.com
See ad on this page

CreaFill Fibers Corp

Lori Toevs
10200 Worton Road
Chestertown, MD 21620
410-810-0779
fiber@creafill.com
www.creafill.com

Dixon Valve & Coupling Company

Bob Grace
1 Dixon Square
Chestertown, MD 21620
410-778-2000
www.dixonvalve.com
See ad on page 19 and 26

Eastman Specialties Corporation

Greg Andrews
10380 Worton Road
Chestertown, MD 21620
410-778-1991
gandrews@eastman.com
www.eastman.com

LaMotte Company

Maria Coakley
802 Washington Avenue
Chestertown, MD 21620
410-778-3100
mcoakley@lamotte.com
www.lamotte.com

Marinas

Haven Harbour Marina Resorts

Charlie Petosa
20880 Rock Hall Avenue
Rock Hall, MD 21661
410-778-6697
email@havenharbour.com
www.havenharbour.com
See ad on page 73

Osprey Point Inn, Restaurant & Marina

Terry Nelson
20786 Rock Hall Avenue
Rock Hall, MD 21661
410-639-2194
innkeeper@ospreypoint.com
www.ospreypoint.com

Port of Chestertown Marina

Samantha Branham
207 S. Water Street, Suite A
Chestertown, MD 21620
410-778-3616
amanda@chestertown.com
www.chestertownmarina.com

Rock Hall Landing Marina & Mariners Motel

Chris Bovee
5657 South Hawthorne Avenue
Rock Hall, MD 21661
410-639-2224
dockmaster@rockhalllanding.com
www.rockhalllanding.com

Rock Hall Yacht Club

Mike Galiszewski
22759 McKinleyville Road
Rock Hall, MD 21661
410-639-2182
manager@RockHallYachtClub.org
www.rockhallyachtclub.org

SHM Great Oak Landing Marina LLC

Brenda Wright
22170 Great Oak Landing Road
Chestertown, MD 21620
410-778-5007
bwright@shmarinas.com
www.shmarinas.com/locations/safe-harbor-great-oak-landing

Spring Cove Marina

Madelyn Reni
21035 Spring Cove Road
Rock Hall, MD 21661
410-639-2110
springcovemarinarockhall@gmail.com
www.springcove.us
See ad on page 72

Tolchester Marina

Cathy Bramble
21085 Tolchester Beach Road
Chestertown, MD 21620
410-778-1400
office@TolchesterMarina.com
www.tolchestermarina.com

Worton Creek Marina, LLC

Libby Patnovic
23145 Buck Neck Road
Chestertown, MD 21620
410-778-3282
marina@wortoncreek.com
www.wortoncreek.com



**HAVEN HARBOUR
MARINA RESORTS**

410.778.6697 • HAVENHARBOUR.COM



Need a better website?

You've come to the right place!

- Clean, purposeful web design
- Easy, intuitive browsing and navigation
- Client-friendly development process
- Simple to manage and maintain

mullin MA ashley

410.778.2184 • mullinashley.com

"Very pleased with the implementation of our website ... questions or problems have always been addressed quickly. Tyler has been great at communicating how effective the website is with regular analysis reports. Very happy with Mullin/Ashley!!"

— Doug Ashley

See our new websites built for Kent and Queen Anne's clients!
mullinashley.com/local

Marine Services

Haven Harbour Marina Resorts

Charlie Petosa
20880 Rock Hall Avenue
Rock Hall, MD 21661
410-778-6697
email@havenharbour.com
www.havenharbour.com
See ad on this page

Jim's Marine, Inc.

Tami Heavlow
96 East Cross Street
Galena, MD 21635
410-648-5106
sales@jims-marine.com
www.jims-marine.com

Tolchester Marina

Cathy Bramble
21085 Tolchester Beach Road
Chestertown, MD 21620
410-778-1400
office@TolchesterMarina.com
www.tolchestermarina.com

Marketing Services

Alosa Communications

Kate Livie
10151 Mill Hollow Lane
Chestertown, MD 21620
410-708-6232
quitebrackish@gmail.com
www.alosacommunications.com

Mullin/Ashley Associates, Inc.

Stephanie Edwards
332 Cannon Street
Chestertown, MD 21620
410-778-2184
sedwards@mullinashley.com
www.mullinashley.com
See ad on page 73

Tidewater Trader

George Kennedy, Sr.
813 S. High Street
Chestertown, MD 21620
410-778-1262
george@tidewatertrader.com
www.tidewatertrader.com

WCTR Radio

Leslie Sea
231 Flatland Rd
Chestertown, MD 21620
410-775-WCTR
wctr.leslie.sea@gmail.com
www.wctr.com

Media

90.5 WKHS Radio

Ken Collins
25301 Lambs Meadow Road
Worton, MD 21678
410-778-4249
kcollins@kent.k12.md.us

APG Kent County News

Daniel Divilio
29088 Airpark Drive
Easton, MD 21601
410-822-1500
ddivilio@thekentcountynews.com
www.apgchesapeake.com

ChesaDel Crier

Steven Atkinson
P.O. Box 222
Worton, MD 21678
302-464-0313
info@shoretobefun.com
www.chesadelcrier.com

The Chestertown Spy

Dave Wheelan
102 E Dover Street
Easton, MD 21601
410-708-0524
dave@spycommunitymedia.org
www.chestertownspy.org

We are all deserving of *dignity* and *compassion*,
through to our final days.

SPECIALIZING IN

Hospice Care | Grief Services | Supportive Care

If you're struggling to find the balance of medical and emotional support, let our care team of nurses, social workers, and volunteers work for you.

 **443-262-4100**
compassregionalhospice.org

 COMPASS

Tidewater Trader

George Kennedy, Sr.
813 S. High Street
Chestertown, MD 21620
410-778-1262
george@tidewatertrader.com
www.tidewatertrader.com

WCTR Radio

Leslie Sea
231 Flatland Rd
Chestertown, MD 21620
410-775-WCTR
wctr.leslie.sea@gmail.com
www.wctr.com

What's Up? Media

Ashley Raymond
201 Defense Highway, Suite 203
Annapolis, MD 21401
410-266-6287, Ext. 1115
araymond@whatsupmag.com
www.whatsupmag.com

Minority-Owned

Bayside H.O.Y.A.S., Inc.

John Queen
104 Spring Street #22
Chestertown, MD 21620
baysidehoyas2013@gmail.com
www.baysidehoyas.org

Les Poissons Gallery

Rusty Poisson
207 Silver Heel Road
Chestertown, MD 21620
410-708-0017
lespoissonsgallery@gmail.com
www.lespoissonsgallery.com

Men On The Move

Jose Medrano
243 Devon Drive
Chestertown, MD 21620
443-480-2615
men_onthemove@hotmail.com
www.menonmove.com

Optimal Health Care, Inc.

Mark Weldon
11377 Robinwood Drive
Hagerstown, MD 21742
301-790-4962, ext. 501
mweldon@ohc-inc.com
www.ohc-inc.com

Phat Daddy's BBQ & Catering LLC

William Holland
205 Spring Ave.
Chestertown, MD 21620
443-282-0028
info@phatdaddysbbq.com
www.phatdaddysbbq.com

RCM Strategic Consulting

Rebecca Murphy
635 High Street
Chestertown, MD 21620
443-840-0586
rcmstrategicconsulting@gmail.com
www.rcmstrategicconsulting.com

Shore Studios

Sam Shoge
503 Washington Avenue, Suite 212
Chestertown, MD 21620
443-406-8082
info@shorestudios.co
www.shorestudios.co

Moving/Storage & Supplies

Kingstown Climate Controlled Self-Storage

Jay Viers
6430 Church Hill Rd
Chestertown, MD 21620
443-282-0030
kingstownstorage@gmail.com
www.kingstownstorage.com/6430-church-hill-rd-chestertown-md-21620

Men On The Move

Jose Medrano
243 Devon Drive
Chestertown, MD 21620
443-480-2615
men_onthemove@hotmail.com
www.menonmove.com

Nonprofit Organizations

Bay Area Assoc of REALTORS®

Curtis Cunningham
1712 Main Street, Suite 200
Chester, MD 21619
443-249-3442
info@bayarearealtors.com
www.baar.realtor

Bayside H.O.Y.A.S., Inc.

John Queen
104 Spring Street #22
Chestertown, MD 21620
baysidehoyas2013@gmail.com
www.baysidehoyas.org

Benedictine

Scott Evans
14299 Benedictine Lane
Ridgely, MD 21660
410-634-2112, Ext. 1125
scott.evans@benschool.org
www.benschool.org

Better Business Bureau of Greater Maryland

Angie Barnett
502 S. Sharp Street, Suite 1200
Baltimore, MD 21201-2445
410-347-3990
info@greatermd.bbb.org
www.bbb.org

Camp Fairlee

Sallie Price
22242 Bay Shore Road
Chestertown, MD 21620
410-778-0566
sprice@esdel.org, fwaggoner@esdel.org
www.campfairlee.com

CASA of the Mid-Shore

Jane Crawford
1 South Washington Street
Easton, MD 21601
410-822-2866
jc@casamidshore.org
www.casamidshore.org

Characer Counts Kent County

Deann Jones
1 Dixon Square
Chestertown, MD 21620
410-708-6617
director@cckentcounty.org
www.cckentmd.org

Chester River Chorale

Andrea Buntz Neiman
P.O. Box 461
Chestertown, MD 21620
443-480-8291
info@chesterriverchorale.org
www.chesterriverchorale.org

Chester Valley Ministers Association

Penni Walker Doyle
P.O. Box 227
Chestertown, MD 21620
518-225-6966
chestervalleyministersassoc@gmail.com
www.chestervalleyministers.org

Chestertown RiverArts

Maria Wood
315 High Street, Suite 106
Chestertown, MD 21620
410-778-6300
info@chestertownriverarts.org
www.community.chestertownriverarts.org

Chestertown Rotary Club

Lisa Webb
P.O. Box 247
Chestertown, MD 21620
410-810-4024
chestertownrotaryclub@gmail.com
www.chestertownmdrotary.wixsite.com/home

Chestertown Tea Party Festival

Sabine Harvey
P.O. Box 526
Chestertown, MD 21620
443-480-8576
contact@chestertownteaparty.org
www.chestertownteaparty.org

Community Mediation Upper Shore, Inc.

Penni Walker Doyle
100 N. Cross Street
Chestertown, MD 21620
410-810-9188
info@CMUSmediation.org
www.cmusmediation.org

Compass Hospice

Heather Guerieri
160 Coursevall Drive
Centreville, MD 21617
443-262-4100
info@compassregionalhospice.org
www.compassregionalhospice.org
See ad on page 74

Crossroads Community, Inc.

John Plaskon
120 Banjo Lane
Centreville, MD 21617
410-758-3050
plaskonj@ccinonline.com
www.ccinonline.com

Delmarva Community Services, Inc. / Transit

Mary Handley
315 High Street, Suite 203
Chestertown, MD 21620
410-778-0215
maryh@dcsdct.org
www.dcsdct.org

Downtown Chestertown Association

Marjorie Adams
P.O. Box 745
Chestertown, MD 21620
downtownchestertown@gmail.com
www.downtownchestertown.org

Eastern Shore Area Health Education Center (AHEC)

Jacob Frego
814 Chesapeake Drive
Cambridge, MD 21613
410-221-2600, Ext. 101
etracy@esahec.org
www.esahec.org

Eastern Shore Land Conservancy

Owen Bailey
114 S. Washington Street, Suite 101
Easton, MD 21601
410-690-4603
obailey@eslc.org
www.eslc.org



People. Community. Opportunity.

Increasing access to supports and opportunities for people with intellectual and developmental disabilities, and building community through meaningful connections in Kent County.

Learn more and make an impact
at: thearcccr.org



Echo Hill Outdoor School

Elizabeth McCown
13655 Bloomingneck Road
Worton, MD 21678
410-348-5880
info@ehos.org
www.ehos.org

For All Seasons, Inc.

Beth Langrell
516 Washington Avenue
Chestertown, MD 21620
410-822-1018
blangrell@forallseasonsinc.org
www.forallseasonsinc.org

Garfield Center for the Arts

Steven Arnold
210 High Street
Chestertown, MD 21620
410-810-2060
sarnold@garfieldcenter.org
www.garfieldcenter.org

Greater Rock Hall Business Association

Suzanne Einstein
P.O. Box 16
Rock Hall, MD 21661
410-935-3491
firstandonlymate@aol.com
www.welcometorockhall.com

Historical Society of Kent County

Barbara Jorgenson
301 High Street
Chestertown, MD 21620
410-778-3499
director@kentcountyhistory.org
www.kentcountyhistory.org

HomePorts

Karen Wright
118 N. Cross Street, 2nd Floor
Chestertown, MD 21620
443-480-0940
info@homeports.org
www.homeports.org

Horizons of Kent and Queen Anne's

Amy Crowding
116 South Lynchburg Street, Suite B
Chestertown, MD 21620
410-778-9903
acrowdinghorizons@gmail.com
www.horizonskentqueenannes.org

Kent Association of Riding Therapy, Inc.

Renee Bench
11570 Still Pond Road
Worton, MD 21678
410-870-5596
kentridingtherapy@gmail.com
www.kentridingtherapy.org

Kent Attainable Housing

Darius Johnson
P.O. Box 501
Chestertown, MD 21620
410-708-9138
kentattainablehousing@gmail.com
www.kentattainablehousing.org

Kent Center, Inc.

Melissa Owen
215 Scheeler Road
Chestertown, MD 21620
410-778-7303
mowen@kentcenter.org
www.kentcenter.org

Kent County Learning Center

Mary Reedy
P.O. Box 93
Rock Hall, MD 21661
410-639-9008
reedy5@verizon.net
www.rockhalllearningcenter.com

Kent County Lodging Association

Joanne Rich
4928 Eastern Neck Road
Rock Hall, MD 21661
410-639-7779
huntingfieldcreek@verizon.net
www.kentcounty.com/lodging

Kent Cultural Alliance

John Schratwieser
101 Spring Avenue
Chestertown, MD 21620
410-708-9751
john@kentculture.org
www.kentculture.org

League of Women Voters of Kent County, MD

Cece Trainor
P.O. Box 374
Chestertown, MD 21620
410-810-1883
www.kent-lwvmaryland.nationbuilder.com

Lions Clubs of Kent County

Ken Roderick
126 Church Hill Farm Lane
Sudlersville, MD 21668
410-924-2810
kroderick73@gmail.com
www.chestertownlions.org

Main Street Chestertown

Nina Fleegle
118 N. Cross Street
Chestertown, MD 21620
410-778-2991
director@mainstreetchestertown.org
www.mainstreetchestertown.org

Maryland Capital Enterprises, Inc.

Maurice Ames
P.O. Box 213
Salisbury, MD 21803
410-546-1900
info@marylandcapital.org
www.marylandcapital.org

Mid Shore Behavioral Health, Inc.

Pat Doyle
28578 Marys Court, Suite 1
Easton, MD 21601
410-770-4801
MSBH.Finance@midshorebehavioralhealth.org
www.midshorebehavioralhealth.org

Mid-Shore Community Foundation

William Duncan
102 E. Dover Street
Easton, MD 21601
410-820-8175
wduncan@mscf.org
www.mscf.org

Mid-Shore Pro Bono, Inc.

Sandy Brown
8 South West Street
Easton, MD 21601
410-690-8128
info@midshoreprobono.org
www.midshoreprobono.org

Minary's Dream Alliance

Doncella Wilson
P.O. Box 35
Denton, MD 21629
minarysdreamalliance@gmail.com
www.minarysdreamalliance.org

NAMI Kent & Queen Anne's

Lainie Surette
P.O. Box 966
Chestertown, MD 21620
443-480-0565
namikentandqueenannes@gmail.com
www.nami.org/home

National Music Festival

Caitlin Patton
P.O. Box 284
Chestertown, MD 21620
443-480-0221
caitlin@nationalmusic.us
www.nationalmusic.us

Rebuilding Together Kent County, MD

Wayne Rickert
905 Gateway Drive
Chestertown, MD 21620
410-708-9936
info@rtkc.org
www.rebuildingtogetherkcmd.org

Salvation Army - Mid-Shore

Wendy Parsons
105 N. Mill Street
Chestertown, MD 21620
410-228-2442, Ext. 1005
Bo.Parsons@uss.salvationarmy.org
Wendy.Parsons@uss.salvationarmy.org
www.uss.salvationarmy.org

SCORE Upper Shore Chapter 670

122 N. Cross Street
Chestertown, MD 21620
Tim Abeska, Chairman
timothy.abeska@scorevolunteer.org
www.score.org
See ad on this page 36 and 60

ShoreRivers

Isabel Hardesty
114 S. Washington Street, Suite 301
Easton, MD 21601
443-385-0511
info@shorerivers.org
www.shorerivers.org

Small Business Development Center/SBDC

Richard Loeffler
Economic Development Center, Chesapeake College
Wye Mills, MD 21679
410-827-5304
rloeffler@chesapeake.edu
www.salisbury.edu/sbdc

Sultana Education Foundation

Drew McMullen
200 S. Cross Street
Chestertown, MD 21620
410-778-5954
dmcmullen@sultanaeducation.org
www.sultanaeducation.org

Sumner Hall (G.A.R. Post #25, Inc.)

Barbara Barrett Foster
206 S. Queen Street
Chestertown, MD 21620
443-282-0023
2ndVP@summerhall.org
www.garpost25.org

The Animal Care Shelter for Kent County

Richard Keaveney
10720 Augustine Herman Highway
Chestertown, MD 21620
410-778-3648
rkeaveney@gmail.com
www.kenthumane.com

The Arc Central Chesapeake Region

Deena Kilmon
1332 Donald Avenue
Severn, MD 21144
410-384-4015
dkilmon@thearcccr.org
www.thearcccr.org
See ad on page 76 and 50-51

SARAH PAIGE STUDIO SALON

312 CANNON STREET, SUITE 3 CHESTERTOWN

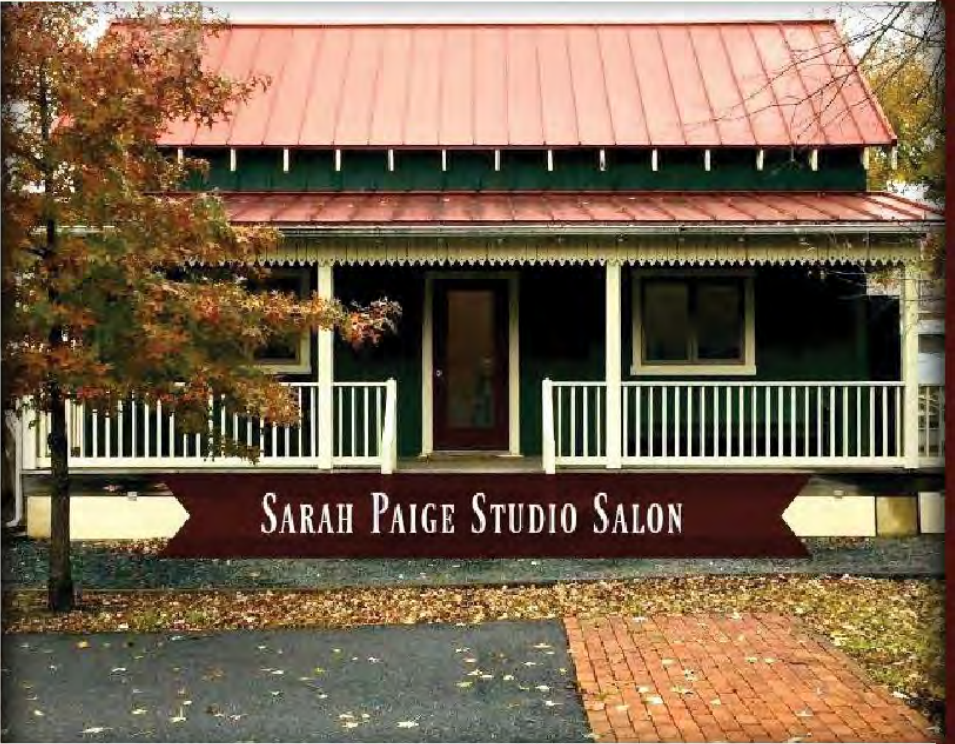
Be our guest

HAIR CUTS, HAIR COLOR,
TEXTURE SERVICES,
PERMS, NAILS, PEDICURES,
WAXING AND MAKEUP

sarahpaigesalon.com

online booking / phone 443-282-0092

GIFT CERTIFICATES AND EGIFT CARDS





Upper Shore Regional Council

Providing regional planning and programming, for the development of Cecil, Kent and Queen Anne's Counties.

For more information, please visit our website:

USRCMD.org

Or contact

Susan O'Neill at soneill@kentgov.org

Upper Shore Regional Council

122 North Cross St.

Chestertown, MD 21621

Uniting Strategic Resources for our Communities

The Community Food Pantry

Susan Basener
401 High Street
Chestertown, MD 21620
410-778-0550
foodpantry@atlanticbb.net
www.kentfoodpantry.org

The Mainstay

Bets Durham
5753 Main Street
Rock Hall, MD 21661
410-639-9133
info@mainstayrockhall.org
www.mainstayrockhall.org

UM Chester River Health Foundation

Maryann Ruehrmund
100 Brown Street
Chestertown, MD 21620
410-810-5660
mruehrmund@umm.edu
www.umcrhf.org
See ad on page 55

United Needs & Abilities, Inc.

Michael Dyer
688 E Main Street
Salisbury, MD 21804
410-543-0665
Mike@UNA1.ORG
www.UNA1.org

United Way of Kent County

Beth Everett
114 South Lynchburg Street, Suite B
Chestertown, MD 21620
410-778-3195
info@unitedwayofkentcounty.org
www.unitedwayofkentcounty.org

Upper Shore Regional Council

Susan O'Neill
122 N. Cross Street
Chestertown, MD 21620
410-810-2124
soneill@kentgov.org
www.usrcmd.org
See ad on this page

Upper Shore Workforce Investment Board

Joanne Gannon
1000 College Circle
Wye Mills, MD 21679
410-822-1716
jgannon@chesapeake.edu
www.uswib.org

Party/Wedding Rentals

Eastern Shore Tents and Events

Adam Beaudry
25452 Commerce Lane
Chestertown, MD 21620
410-810-0686
adam@estents.com
www.estents.com

Personal Services

A Shear Design

505 Washington Avenue
Chestertown, MD 21620
410-778-0898

College Heights Barber Shop

507 Washington Avenue
Chestertown, MD 21620
410-778-1097

Fellows, Helfenbein & Newnam Funeral Home, P.A.

Kirk Helfenbein
130 Speer Road
Chestertown, MD 21620
410-778-0055
kirk@fhfuneralhome.com
www.fhfuneralhome.com
See ad on this page

Flow Salonspa

Jaye Owings
305 High Street
Chestertown, MD 21620
410-810-1881
info@flowsalonspa.com
www.flowsalonspa.com

Marigold Staffing Services | Cleaning

Sherlene Stevens
503 Washington Avenue, #315
Chestertown, MD 21620
410-671-5372
cleaningservicesinquiry@gmail.com
www.marigoldstaffingservices.weebly.com

Maryland Appliance Repair, LLC

Mike Willard
267 Tidewater Circle
Preston, MD 21655
866-629-0917
mikewillard@mdappliancerepairllc.com
www.mdappliancerepair.com



Fellows, Helfenbein & Newnam

FUNERAL HOME, P.A.

Chestertown, Maryland
(410) 778-0055
www.fhfuneralhome.com

Sarah Paige Studio Salon

Cindy Newsome
312 Cannon Street Suite 3
Chestertown, MD 21620
443-282-0092
sarahpaigestudiosalon@gmail.com
www.sarahpaigesalon.com
See ad on page 78

Spa Angels Boutique and Spa

Patricia Kelly
310 Cannon Street, Suite #2
Chestertown, MD 21620
443-924-9478
spaangelsboutiqueandspa@gmail.com
www.spaangelsboutiqueandspa.com

Photographers

Reflective Photography

Michelle Gladu
5761 Main Street, P.O. Box 434
Rock Hall, MD 21661
410-639-4366
michelle@reflectivephotography.us
www.reflectivephotography.us

Shore Studios

Sam Shoge
503 Washington Avenue, Suite 212
Chestertown, MD 21620
443-406-8082
info@shorestudios.co
www.shorestudios.co

Picture Framing

Finishing Touch, The

Bob Ramsey
311 High Street
Chestertown, MD 21620
410-778-5292
bob@finishingtouchshop.com
www.finishingtouchshop.com

Reflective Photography

Michelle Gladu
5761 Main Street, P.O. Box 434
Rock Hall, MD 21661
410-639-4366
michelle@reflectivephotography.us
www.reflectivephotography.us

Property Management

Emory Hill Companies

Robert Hill
10 Corporate Circle, Suite 100
New Castle, DE 19720
302-322-9500
emoryhill@emoryhill.com
www.emoryhill.com

Hickman Farm Management

Joe Hickman
10057 Perkins Hill Road
Chestertown, MD 21620
410-778-9122
francisjhickman@gmail.com

LEADing edge inspections

Deborah Jill Payne
24291 Chestertown Rd.
Chestertown, MD 21620
443-480-3755
dj.payne@hotmail.com
www.facebook.com/www.jillpayneinspections

Stoltzfus Property Management

Raymond Stoltzfus
11925 Chesterville Road
Kennedyville, MD 21645
410-648-5579
raystoltzfus@gmail.com
www.stoltzfuspropertymanagement.com



THE *Lifestyle* PROPERTY SPECIALIST



Looking for property?
Let us guide you in
the right direction...
We're outstanding
in our Field!

WWW.CSREALTORS.COM | 410.778.3779
201 S. CROSS STREET, CHESTERTOWN, MD 21620

Real Estate Services

Amy Larrauri with RE/MAX Executive

Amy Larrauri
1919 Main St
Chester, MD 21619
443-261-2500
amio915@gmail.com
www.buysellwithamio.com

Bay Area Assoc of REALTORS®

Curtis Cunningham
1712 Main Street, Suite 200
Chester, MD 21619
443-249-3442
info@bayarearealtors.com
www.baar.realtor

Coldwell Banker Real Estate Company

Hugh Smith
114B South Cross Street
Chestertown, MD 21620
410-778-0330
hsmith@cbchesapeake.com
www.cbchesapeake.com

Cross Street Realtors, LLC

Stacy Kendall
201 S. Cross Street
Chestertown, MD 21620
410-778-3779
info@csrealtors.com
www.csrealtors.com
See ad on this page

Doug Ashley Realtors, LLC

Doug Ashley
227 1/2 High Street
Chestertown, MD 21620
410-810-0010
doug@dougashleyrealtors.com
www.dougashleyrealtors.com

Emory Hill Companies

Robert Hill
10 Corporate Circle, Suite 100
New Castle, DE 19720
302-322-9500
emoryhill@emoryhill.com
www.emoryhill.com

Gunther McClary Real Estate

Christopher McClary
P.O. Box 699
Cecilton, MD 21913
410-648-5658
realestate@gunthermcclary.com
www.gunthermcclary.com

Hogans Agency, Inc.

Kathryn Hogans
Historic Stam's Hall, 220 High Street
Chestertown, MD 21620
410-778-1665
matt@hogans.com
<http://www.hogans.com>

Keller Williams Select Realtors

Bonnie Camarata
306 Cannon Street, Suite 1
Chestertown, MD 21620
443-282-0027
paulareeder1@gmail.com

KRM Development Corporation

Bryan Matthews
205 Cannon Street, Suite 1
Chestertown, MD 21620
410-810-1574
bmatthews@krm-dev.com
www.krm-dev.com
See ad on page 19 and 35

LEADing edge inspections

Deborah Jill Payne
24291 Chestertown Rd.
Chestertown, MD 21620
443-480-3755
dj.payne@hotmail.com
www.facebook.com/www.jillpayneinspections

Liddy Campbell - Realtor, GRI with TTR

Sotheby's International Realty
Liddy Campbell
359 High Street, Suite #1
Chestertown, MD 21620
410-708-5433
lcampbell@ttrsir.com
www.ttrsir.com
See ad on page 81

Mullin Appraisal Service

James Mullin
1676 Glebe Road
Earleville, MD 21919
410-275-8999
jimmullinsra1@gmail.com

RCM Strategic Consulting

Rebecca Murphy
635 High Street
Chestertown, MD 21620
443-840-0586
rcmstrategicconsulting@gmail.com
www.rcmstrategicconsulting.com



TTR | Sotheby's
INTERNATIONAL REALTY

Liddy Campbell — Realtor, GRI
410.708.5433 | lcampbell@ttrsir.com

Proudly selling Maryland's
Eastern Shore lifestyle
for over TEN years.

TTR Sotheby's International Realty | 410.643.3344
17 Goldsborough Street, Easton, MD 21610

Richardson Properties Corporation

Russ Richardson
15 Smithbridge Road
Chester Heights, PA 19017
610-459-2600
russ.richardson@rpcrealtors.com
www.rpcrealtors.com

Robert L. Davis Real Estate, Inc.

Lee Davis, Jr.
852 Washington Avenue
Chestertown, MD 21620
410-778-2610
leedavisrealestate@verizon.net
www.chestertownapartments.com

Rock Hall Properties Real Estate

Cindy Genter
5820 Main Street
Rock Hall, MD 21661
410-639-4003
cindy@rockhallproperties.com
www.rockhallproperties.com

Sommers Enterprises, Inc.

Peg Sommers
903 Washington Avenue, Suite 1A
Chestertown, MD 21620
410-708-6745
milsommers@verizon.net

Stoltzfus Property Management

Raymond Stoltzfus
11925 Chesterville Road
Kennedyville, MD 21645
410-648-5579
raystoltzfus@gmail.com
www.stoltzfuspropertymanagement.com

Swope Lees Commercial Real Estate

Chuck Swope
208 E. Market Street
West Chester, PA 19382
610-429-0200
chuck@swopelees.com
www.swopelees.com

Village Real Estate Company

John Carroll
119A-2 N. Main Street
Galena, MD 21635
410-648-6844
john@villageagents.com
www.villageagents.com

Wyble Enterprises Realtors, LLC

Hugh Wyble
219 High Street
Chestertown, MD 21620
410-778-3050
hugh.wyble@gmail.com
www.wybleenterprisesrealestate.com

Recreation

BayShore Campground, LLC

Meagan Wick
4228 Eastern Neck Road
Rock Hall, MD 21661
410-639-7485
camping@BayShorecamping.com
www.bayshorecamping.com

Blue Crab Chesapeake Charters

Mark and Suzanne Einstein
Sharp Street Pier at Waterman's Crab House
Rock Hall, MD 21661
410-935-3491
bluecrabcc@aol.com
www.bluecrabcharters.com
See ad on this page

Chester River Yacht and Country Club

Jerren Wetterau
7738 Quaker Neck Road
Chestertown, MD 21620
410-778-3818
jwetterau@crycc.org
www.crycc.org



BLUE CRAB CHESAPEAKE SAILING CHARTERS

ROCK HALL'S
ORIGINAL SUNSET CRUISE
Day Sails – Sunset Cruises

Ninety minute cruises departing
up to five times daily from
the Sharp Street Pier
at Waterman's Crab House

Capt. Mark Einstein, USCG 100 Ton Master

410-708-1803
www.bluecrabcharters.com

Call Now To Sail This Season! Check Out Our Reviews on Trip Advisor

Kent County Parks and Recreation

Myra Butler
11041 Worton Road
Worton, MD 21678
410-778-1948
info@kentparksandrec.org
www.kentparksandrec.org

Rock Hall Yacht Club

Mike Galiszewski
22759 McKinleyville Road
Rock Hall, MD 21661
410-639-2182
manager@RockHallYachtClub.org
www.rockhallyachtclub.org

Worthmore Enrichment Center

Pamela Kuster
11570 Still Pond Rd
Worton, MD 21678-1703
410-708-8973
worthmoreec@gmail.com
www.worthmoreequestrian.com

Recruiting Services

Sunburst Support LLC

Brian Barrett
4 Byford Court
Chestertown, MD 21620
240-676-6162
brian@sunburstsupport.com
www.sunburstsupport.com

Recycling

Infinity Recycling, Inc.

R. Schumann, Jr.
31850 Millington Road
Millington, MD 21651
410-928-3333
infinrecy@aol.com
www.infinityrecycling.org

PIP'S Discount Liquors

**1 Washington Square
Chestertown, MD 21620**

410-778-0123

Pipscurbsideanddelivery@gmail.com

Restaurants & Food Services

98 Cannon Riverfront Grille

Joe Elliott
98 Cannon Street
Chestertown, MD 21620
443-282-0055
info@98cannon.com
www.98cannon.com

Beverly's Family Restaurant

Beverly Chance
13723 Augustine Herman Highway
Galena, MD 21635
410-778-1995
momb_21635@yahoo.com
www.beverlys-family.edan.io

Cassinelli Distilling/Bad Alfred's

Al Cassinelli
323 High Street
Chestertown, MD 21620
443-282-0163
BadAlfredsDistilling@gmail.com
www.badalfreds.com

Evergrain Bread Company

Kelly Holton
201-203 High Street
Chestertown, MD 21620
410-778-3333
www.evergrainbreadco.com

Figg's Ordinary

Ingrid Hansen
207 S. Cross Street, #102
Chestertown, MD 21620
443-282-0061
ingrid@figgsordinary.com
www.figgsordinary.com

Fish Whistle

Jeffrey Carroll
100 George Street
Georgetown, MD 21930
410-275-1603
amuse_bouchecatering@yahoo.com
www.fishandwhistle.com

Germaine's Uptown Carryout

Germaine Lanaux
827 High Streets
Chestertown, MD 21620
443-282-0048
germaine.lanaux@gmail.com
www.Germainescarryout.com

Java Rock, LLC

Jim Rich
21309 Sharp Street
Rock Hall, MD 21661
410-639-9909
huntingfieldcreek@verizon.net
www.javarockmd.com

Kitty Knight, LLC

Sueann Hall
14028 Augustine Herman Highway
Georgetown, MD 21930
410-648-5200
shall@kittyknight.com
www.kittyknight.com

Luisa's Cucina Italiana

Vincenzo Assante
849 Washington Avenue
Chestertown, MD 21620
410-778-5360
luisascucina@gmail.com
www.luisasrestaurant.com

Osprey Point Inn, Restaurant & Marina

Terry Nelson
20786 Rock Hall Avenue
Rock Hall, MD 21661
410-639-2194
innkeeper@ospreypoint.com
www.ospreypoint.com

Phat Daddy's BBQ & Catering LLC

William Holland
205 Spring Ave.
Chestertown, MD 21620
443-282-0028
info@phatdaddysbbq.com
www.phatdaddysbbq.com

SHM Great Oak Landing Marina LLC

Brenda Wright
22170 Great Oak Landing Road
Chestertown, MD 21620
410-778-5007
bwright@shmarinas.com
www.shmarinas.com/locations/safe-harbor-great-oak-landing

Stam's Luncheonette

Teresa Brandywine
215 High St
Chestertown, MD 21620
410-885-6722
stamsluncheonette@gmail.com
www.stamsluncheonette.com

The Kitchen at the Imperial

Steve Quigg
208 High Street
Chestertown, MD 21620
410-778-5000
www.imperialchestertown.com

Waterman's Crab House

Bill Weldon
21055 Sharp Street
Rock Hall, MD 21661
410-639-2261
wch.info@gmail.com
www.watermanscrabhouse.com

Retail

Anthony's Flowers & Landscaping, Inc.

Betsy Herr
7200 Church Hill Road
Chestertown, MD 21620
410-778-2525
erherr50@gmail.com
www.anthonysflowers.net
See ad on page 70

Chestertown RiverArts

Maria Wood
315 High Street, Suite 106
Chestertown, MD 21620
410-778-6300
info@chestertownriverarts.org
www.community.chestertownriverarts.org

Finishing Touch, The

Bob Ramsey
311 High Street
Chestertown, MD 21620
410-778-5292
bob@finishingtouchshop.com
www.finishingtouchshop.com

Frank B. Rhodes Furniture Maker

Frank Rhodes
535 Morgnec Road
Chestertown, MD 21620
410-778-3993
office@frankbrhodes.com
www.frankbrhodes.com

Haven Harbour Marina Resorts

Charlie Petosa
20880 Rock Hall Avenue
Rock Hall, MD 21661
410-778-6697
email@havenharbour.com
www.havenharbour.com
See ad on page 72

JBK ACE Hardware & Rental

John Price
18 Washington Square
Chestertown, MD 21620
410-778-9600
jbkinfo@jbkhardware.com
www.jbkhardware.com
See ad on this page

JJ's Deli and Liquors

Penny Usilton
511 Washington Avenue
Chestertown, MD 21620
443-282-0091
jjsdeliandliquors@gmail.com
www.jjsdeliandliquors.com

Molly's Place, LLC

Chikki Shajwani
12503 Augustine Herman Highway
Kennedyville, MD 21645
410-348-9160
chikki@mymollys.com
www.mymollys.com

Pip's Liquors

Rob Connell
#2 Washington Square, Washington Avenue
Chestertown, MD 21620
410-778-0123
rtconnell@live.com
See ad on page 82

Reflective Photography

Michelle Gladu
5761 Main Street, P.O. Box 434
Rock Hall, MD 21661
410-639-4366
michelle@reflectivephotography.us
www.reflectivephotography.us

Selkie Books of Rock Hall

Used, New & Rare Books

*Be enchanted, Be transformed
Fall under the spell of a Selkie book...*

**6202 Rock Hall Road~Route 20~21661
On Facebook
selkiebooksrh@yahoo.com**



JBK **ACE** Hardware & Rental

**18 Washington Square
Chestertown, MD 21620
410-778-9600 ♦ www.jbkhardware.com**



Riverside Unique

Michael Riggan
227 High Street
Chestertown, MD 21620
410-778-2073
docmerchandise@yahoo.com
www.riversideunique.com

Sears Hometown Store - Chestertown

Penelope Kelly
19 Washington Square
Chestertown, MD 21620
410-778-2335
peekent@atlanticbcbn.net
www.searshometownstore.com

Selkie Books of Rock Hall, LLC

Marta Kumer
6202 Rock Hall Road
Rock Hall, MD 21661
443-496-6135
selkiebooksrh@yahoo.com
www.selkiebooksrockhallllc.com
See ad on this page

Spa Angels Boutique and Spa

Patricia Kelly
310 Cannon Street, Suite #2
Chestertown, MD 21620
443-924-9478
spaangelsboutiqueandspa@gmail.com
www.spaangelsboutiqueandspa.com

The Bookplate, LLC

Thomas Martin
112 S. Cross Street
Chestertown, MD 21620
410-778-4167
contact@thebookplate.net
www.bookplate.biz

Tiny Tots Boutique, LLC

Sharon Puckett
114A S. Cross Street
Chestertown, MD 21620
443-282-0100
smpuckett00@gmail.com
www.tinytotsboutique.net


Tractor Supply, Inc.

Kristi Mogle
711 Washington Avenue, Suite 1B
Chestertown, MD 21620
410-778-2047
str1989@tractorsupply.com
www.tractorsupply.com

Twigs and Teacups

Paul Heckles
111 S. Cross Street
Chestertown, MD 21620
410-778-1708
paulheckles1@gmail.com
www.facebook.com/TwigsTeacups

Where loving-kindness lives.



Acts
RETIREMENT-LIFE COMMUNITIES®
Heron Point of Chestertown
ABOUTACTS.COM/KENT-COUNTY

501 E CAMPUS AVENUE, CHESTERTOWN, MD 21620
410-778-7300

Village House

Erin Zierfuss
103 S. Cross Street
Chestertown, MD 21620
410-778-5766
erin@villagehouse.net
www.villagehouse.net

Retirement Community

Heron Point of Chestertown

Catherine Leclerc
501 East Campus Avenue
Chestertown, MD 21620
410-778-8300
catherine.leclerc@actslife.org
www.actsretirement.org/communities/maryland/heron-point-of-chestertown
See ad on this page

Roofing

Stoltzfus Roofing, Inc.

Marian Stoltzfus
6408 Church Hill Road
Chestertown, MD 21620
410-810-1504
admin@sunrisesolarmd.com
www.stoltzfusroofingmd.com

Sales & Service

Chesapeake Boat Lift Services, LLC

Duncan Welsh
7015 Church Hill Road
Chestertown, MD 21620
410-708-1409
duncan@chesapeakeboatlifts.com
www.chesapeakeboatlifts.com
See ad on this page

Security

Atlantic Security, Inc.

Jennifer Wayne
944 Washington Avenue
Chestertown, MD 21620
410-778-6112
jen@atlanticsecurityinc.com
www.atlanticsecurityinc.com

Surveyors

McCrone, Inc.

David Strouss
320 Pennsylvania Avenue
Centreville, MD 21617
410-758-2237
dstrouss@mccrone-engineering.com
www.mccrone-engineering.com

Chesapeake Boat Lift Service LLC



At Chesapeake Boat Lift Services, LLC, we provide our customers high-quality service personalized to their unique needs. We install top-quality lifts and perform maintenance and repairs on all brands of lifts. We can help you design and plan your new pier, and install dock bumpers to protect your boat and build custom piling caps.

Offices in Chestertown and Easton
Call: 410-810-1019
Visit: chesapeakeboatlift.com
7015 Church Hill Road | Chestertown, MD
MD Home Improvement License # 101968
MD Marine Contractor License # 003(E)

Michael A. Scott, Inc.

Melanie Dalziel
400 South Cross Street, Suite 3
Chestertown, MD 21620
410-778-2310
melanie@michaelascottinc.com
www.michaelascottinc.com

Transportation

Delmarva Community Services, Inc. / Transit

Mary Handley
315 High Street, Suite 203
Chestertown, MD 21620
410-778-0215
maryh@dcsdct.org
www.dcsdct.org

Phillips Trucking, LLC

Joshua Phillips
11420 Browntown Road
Kennedyville, MD 21645
410-348-5135
phillipstrucking@hotmail.com
www.phillipstruckingllc.net
See ad on page 85

J.A. Phillips Trucking
FROM LOCAL TO LONG DISTANCE
Josh Phillips



410-348-5135
11420 Browntown Road
Kennedyville MD 21645

410-348-5396 Fax
www.phillipstruckingllc.net
phillipstrucking@hotmail.com

Prince Limousine, Inc.

Charles Prince
8249 Mt Pleasant Plantation Lane
Chestertown, MD 21620
410-778-4860
princelimousine2@gmail.com

Utilities

Alger Oil & Propane

Robert Clemson
25445 Commerce Lane
Chestertown, MD 21620
410-778-0600
mrg@algeroil.com
www.algerenergy.com

Biggs Fuel Company, Inc.

Curtis Biggs
100 East Cross Street
Galena, MD 21635
410-648-6001
biggsfuel@gmail.com
www.biggsfuel.com
See ad on this page

Chesapeake Utilities

M.Q. Riding
500 Energy Lane, Suite 100
Dover, DE 19901
1-800-427-2883
jmartin@chpk.com
www.chpkgas.com

Choptank Electric Cooperative

Kevin Wright
P.O. Box 430
Denton, MD 21629
410-479-8645
kevinw@choptankelectric.coop
www.choptankelectric.coop

PHILLIPS STATION
• WAREHOUSE & SUPPLY •

Joshua Phillips

11999 Augustine Herman Hwy.
P.O. Box 6
Kennedyville, MD 21645

410-348-5135
Fax# 410-348-5396
phillipstrucking@hotmail.com

BIGGS
FUEL COMPANY, Inc.

• Fuel Oil
• Diesel Fuels
• Gasoline
• Soy Diesel

Automatic Delivery • Budget Plans

Kent County: 410-648-6001
Chestertown: 410-810-7099
Southern Cecil Co.: 410-755-6999

 www.biggsfuel.com

Galena, MD
Serving Kent County
& Upper Queen Anne's County

Delmarva Power

Renee Sheehy
2600 Centreville Road
Centreville, MD 21617
410-758-4127
renee.Sheehy@delmarva.com
www.delmarva.com

Owen Excavation, LLC

Christopher Owen
8875 Center Lane
Chestertown, MD 21620
443-350-0498
chris@owenexcavation.com
www.facebook.com/OwenExcavation

Service Energy Poore's Propane

Jane Jensen
1010 Washington Avenue
Chestertown, MD 21620
410-778-0002
jane@poorespropane.com
www.poorespropane.com

Tri Gas & Oil Co., Inc.

Clyde Ellis
13255 Augustine Herman Highway
Galena, MD 21635
410-648-5856
cellis@trigas-oil.com
www.trigas-oil.com

Warehousing & Transloading

Phillips Station, LLC

Joshua Phillips
11999 Augustine Herman Highway
Kennedyville, MD 21645
410-348-5135
phillipstrucking@hotmail.com
www.phillipstrucking.net
See ad on this page

Waste Removal

A Plus Sanitation, LLC

Bill Skinner
P.O. Box 72
Chestertown, MD 21620
410-708-5301
aplussanitation18@gmail.com
www.aplussanitation.com
See ad on page 63

A-Plus Septic Services, LLC

Wayne Edwards
13083 Hickory Drive
Galena, MD 21635
410-778-6629
aplussepticsevice@yahoo.com
www.aplussepticllc.com
See ad on page 63

Complete Rolloff Services, LLC

Jennifer Richardson
10946 Kennedyville Road
Kennedyville, MD 21645
443-480-9623
completerolloffs@gmail.com
www.completerolloffs.com
See ad on this page

GFL Environmental

Jared Dulin
604 Cannery Ln
Towensend, DE 19734
302-378-5400
jared.dulin@gflenv.com
www.gflenv.com

Wineries

Crow Vineyard & Winery, LLC

Judy Crow
12441 Vansant Corner Road
Kennedyville, MD 21645
410-648-5687
crowfarmmd@gmail.com
www.crowvineyardandwinery.com

Woman-Owned

Amy Larrauri with RE/MAX Executive

Amy Larrauri
1919 Main St
Chester, MD 21619
443-261-2500
amio915@gmail.com
www.buysellwithamio.com

Alosa Communications

Kate Livie
10151 Mill Hollow Lane
Chestertown, MD 21620
410-708-6232
quitebrackish@gmail.com
www.alosacommunications.com

Assist with H.R.

Jean Leverage
13825 Still Pond Road
Still Pond, MD 21667
410-708-1678
assistwithhr@gmail.com

BAON Enterprises

Scott Gornall
525 N Kent Street
Chestertown, MD 21620
443-643-6000
baon@baonenterprises.com
www.baonenterprises.com

Discovering Serenity Counseling Services, LLC

Rebecca DeMattia
114 D S Lynchburg St
Chestertown, MD 21620
443-331-4708
rdemattia@discoveringserenity.com
www.DiscoveringSerenity.com

Eastern Shore Business Services, LLC

Betta Fraccaroli
8979 Orchard Drive
Chestertown, MD 21620
410-708-3875
esbizserv@gmail.com
www.esbizserv.com

Figg's Ordinary

Ingrid Hansen
207 S. Cross Street, #102
Chestertown, MD 21620
443-282-0061
ingrid@figgsordinary.com
www.figgsordinary.com

Fit Flock, LLC

Amanda Parks
118-F S Lynchburg St
Chestertown, MD 21620
410-708-3122
fittlocker@gmail.com
www.thefitflock.com

Germaine's Uptown Carryout

Germaine Lanaux
827 High Streets
Chestertown, MD 21620
443-282-0048
germaine.lanaux@gmail.com
www.Germainescarryout.com

Heritage Strategies, LLC

Elizabeth Watson
P.O. Box 277
Birchrunville, PA 19421
410-725-1272
aelizabethwatson@gmail.com
www.heritagestrategies.com

Kingstown Climate Controlled Self-Storage

Jay Viers
6430 Church Hill Rd
Chestertown, MD 21620
443-282-0030
kingstownstorage@gmail.com
www.kingstownstorage.com/6430-church-hill-rd-chestertown-md-21620

Kitty Knight, LLC

Sueann Hall
14028 Augustine Herman Highway
Georgetown, MD 21930
410-648-5200
shall@kittyknight.com
www.kittyknight.com

KVN Partners

Katharine Van Name
108 Spring Avenue
Chestertown, MD 21620
410-991-2662
kate@kvnpartners.com
www.kvnpartners.com

LEADing edge inspections

Deborah Jill Payne
24291 Chestertown Rd.
Chestertown, MD 21620
443-480-3755
dj.payne@hotmail.com
www.facebook.com/Wwww.jillpayneinspections

Liddy Campbell - Realtor, GRI with TTR Sotheby's International Realty

Liddy Campbell
359 High Street, Suite #1
Chestertown, MD 21620
410-708-5433
lcampbell@ttrsir.com
www.ttrsir.com
See ad on page 81

Marigold Staffing Services | Cleaning

Sherlene Stevens
503 Washington Avenue, #315
Chestertown, MD 21620
410-671-5372
cleaningservicesinquiry@gmail.com
www.marigoldstaffingservices.weebly.com

Massoniart - Carla Massoni Gallery

Carla Massoni
203 High Street
Chestertown, MD 21620
410-778-7330
cmassoni@me.com
www.massoniart.com

Modern Stone Age Kitchen

Christina Schindler
236 Cannon Street
Chestertown, MD 21620
908-627-1573
christina@eatlikeahuman.com
www.modernstoneagekitchen.com

RCM Strategic Consulting

Rebecca Murphy
635 High Street
Chestertown, MD 21620
443-840-0586
rcmstrategicconsulting@gmail.com
www.rcmstrategicconsulting.com/

Reflective Photography

Michelle Gladu
5761 Main Street, P.O. Box 434
Rock Hall, MD 21661
410-639-4366
michelle@reflectivephotography.us
www.reflectivephotography.us

Selkie Books of Rock Hall, LLC

Marta Kumer
6202 Rock Hall Road
Rock Hall, MD 21661
443-496-6135
selkiebooksrh@yahoo.com
www.selkiebooksrockhallllc.com
See ad on page 83

Sommers Enterprises, Inc.

Peg Sommers
903 Washington Avenue, Suite 1A
Chestertown, MD 21620
410-708-6745
mlsommers@verizon.net

Spa Angels Boutique and Spa

Patricia Kelly
310 Cannon Street, Suite #2
Chestertown, MD 21620
443-924-9478
spaangelsboutiqueandspa@gmail.com
www.spaangelsboutiqueandspa.com

Stam's Luncheonette

Teresa Brandywine
215 High St
Chestertown, MD 21620
410-885-6722
stamluncheonette@gmail.com
www.stamluncheonette.com

Valliant Wealth Strategies

Nicole Caringal
110 S. Queen Street
Chestertown, MD 21620
410-810-0800
Nicole.Caringal@RaymondJames.com
www.valliantwealth.com

Village House

Erin Zierfuss
103 S. Cross Street
Chestertown, MD 21620
410-778-5766
erin@villagehouse.net
www.villagehouse.net

Wildly Native Flower Farm

Liza Goetz
7060 Broad Neck Road
Chestertown, MD 21620
443-457-8475
wildlynative@gmail.com
www.wildlynativeflowerfarm.com



Let us provide you with the best fit for your next commercial or residential project!

Dumpsters • 10 yard • 15 yard • 20 yard • 30 yard • 40 yard

Call 443-480-9623 today for a free quote.

Locally owned and operated, serving central Delaware and Maryland's Eastern Shore ... Cecil, Kent, Queen Anne's, Caroline, and Talbot County.

completerolloffs@gmail.com | www.CompleteRolloffs.com

By supporting our local business community we bring an enhanced quality of life and well-being to our residents and visitors.

A Plus Sanitation, LLC	63
A-Plus Septic, LLC	63
Alton E. Darling Construction Company	64
Anthony, Judge & Ware, LLC	66
Anthony's Flowers & Landscaping, Inc.	70
The Arc Central Chesapeake Region.....	50-51, 76
BayTech Team	62
Biggs Fuel Company, Inc.	85
Blue Crab Chesapeake Charters.....	81
Blue Heron Contracting, LLC	12
Brampton Inn	Outside back cover
Chesapeake Bank & Trust Company	37
Chesapeake Boat Lift Services, LLC	84
Chesapeake CNC Manufacturing Center	72
Chesapeake College.....	12
Compass Hospice.....	74
Complete Rolloff Services.....	86
Cross Street Realtors, LLC	80
David A. Bramble, Inc.....	58
Davis, Moore, Shearon & Associates, LLC	67
Dixon.....	19, 26
Fellows, Helfenbein & Newnam Funeral Home, PA	79
Gillespie & Son, Inc.....	59
Fred's Firearms.....	68
Haven Harbour Marina Resorts	73
Heron Point of Chestertown.....	84
Horsey Construction, LLC.....	63
JBK ACE Hardware & Rental	83
Kent County Economic Development	22
Kent County Public Schools	44-45, 65
Kent School	41
KRM Construction Company.....	19, 60
KRM Development Corporation.....	19, 35
M3 Architecture	58
MacLeod Law Group.....	71
MidAtlantic Farm Credit	57
Mullin/Ashley Associates, Inc.	73
Phillips Station	85
Phillips Trucking, LLC	85
Pip's Liquors.....	82
PNC Bank.....	27
Sarah Paige Studio Salon.....	78
SCORE Upper Shore Chapter 670.....	36, 60
Selkie Books of Rock Hall.....	83
Shore United Bank.....	13
Spring Cove Marina.....	72
Starkey Mechanical	64
State Farm Insurance	70
The Peoples Bank.....	34
Talkie Communications.....	61
TTR Sotheby's International Realty – Liddy Campbell.....	81
University of Maryland Chester River Health Foundation.....	55
University of Maryland Shore Regional Health.	Inside front cover
USA Fulfillment	68
Upper Shore Regional Council	78

Highlighted Listings

Infinity Recycling.....	81
State Farm Insurance	70
TTR Sotheby's International Realty – Liddy Campbell....	80, 87



JOIN THE CHAMBER
Visit
▶ kentchamber.org

IMPORTANT KENT COUNTY
PHONE NUMBERS

Alcohol Beverage Office	410-810-2212
Board of Elections	410-778-0038
Business & Marriage License (MD State)	410-778-7460
Building Inspector/Building Permits.....	410-778-7423
Children & Family Services.....	410-810-2673
County Administrator	410-778-4600
County Circuit Court	410-778-7460
County Offices & Commissioners	410-778-4600
County Finance & Tax Office	410-778-7478
County Health Department	410-778-1350
County Human Resources Office	410-778-4595
County Roads	410-778-4252
Department of Natural Resources	410-928-3643
District Court	410-810-3362
Economic Development Office.....	410-810-2168
Emergency Services	911 or 410-778-7458
Environmental Health Office	410-778-1361
Fire Marshall's Office.....	410-822-7609
Humane Society of Kent County	410-778-3648
Kent County Public Library	410-778-3636
Parks & Recreation.....	410-778-1948
Planning & Zoning.....	410-778-7475
Property Tax Assessment Office.....	410-778-1410
Public Defender's Office	410-778-0809
Public Works.....	410-778-2600
Recycling and Waste Disposal	410-778-7439
Register of Wills	410-778-7466
Sheriff's Office.....	410-778-2279
Social Services.....	410-810-7600
Kent Soil & Water Conservation District	410-778-5150
State Attorney's Office	410-778-7450
Tourism Development Office	410-778-0416
UM Extension Office	410-778-1661
UM Shore Medical Center at Chestertown	410-778-3300
Upper Shore Aging, Inc.	410-778-6000
Visitors Center	410-778-9737
Zoning Appeals Board	410-778-7467

Photo credit: Mullin/Ashley



KENT COUNTY
CHAMBER OF COMMERCE
CHAMPIONING THE SUCCESS OF OUR MEMBERS

Membership Application

MISSION STATEMENT – The Kent County Chamber of Commerce will be the leading advocate for business in the County by serving our members in ways that enhance our business community, the quality of life, and the well-being of residents and visitors.

The information in this section only (except for # of Employees) is what will be published on the Chamber website and in the annual printed Chamber Business Directory.

Name of Business or Organization _____

Type of Business _____ # of Employees (2 part-time = 1 full-time employee) _____

Address _____

City _____ State _____ Zip Code _____

Mailing Address (if different from physical address) _____

Business Phone _____ Fax _____ Website _____

Designated Representative _____

Phone (if different from business phone) _____

Email _____ Date _____

Description of business, history and any information you would like the Chamber and members of the community to know about your company, organization or personal business. _____

All memberships will automatically renew annually at your anniversary date unless notification to the contrary is received in writing from member at least 30 days in advance of the anniversary date.

ADDITIONAL CONTACT INFORMATION

Billing contact (required):

Name _____

Phone _____

Email _____

Electronic communications contact(s):

Name _____

Email _____

Name _____

Email _____

Authorized Signature of Applicant

Annual membership fees are based on your number of FTE employees (2 part-time = 1 full-time). **Please circle one:**

Self-employed and up to 5 employees	\$200
6 – 10 employees	\$230
11 – 99 employees	\$310
100+ employees	\$395
Nonprofit 501 (c)3 organization	\$115
Retiree/Individual (no company listing)	\$105
Subsidiary business of current member	\$80

You can also Become a Member by visiting the Chamber website.
www.kentchamber.org/membership

☐ I am interested in becoming a Corporate Sponsor of the Chamber. Please contact me.

SPONSORSHIP LEVELS: Diamond: \$5,000 • Platinum: \$3,000 • Gold: \$2,000 • Silver: \$1,000 • Bronze: \$500

Select One: ☐ Visa ☐ MasterCard ☐ AMEX ☐ Check

Credit card number: _____ Expiration date: _____ Security code: _____

Name as it appears on the card: _____ Signature: _____

Kent County Chamber of Commerce • 122 North Cross Street • P.O. Box 146 • Chestertown, MD 21620
Telephone: 410-810-2968 • director@kentchamber.org • www.kentchamber.org



*Championing the success
of our members.*

Place
Stamp
Here

The Kent County Chamber of Commerce
122 North Cross Street
P.O. Box 146
Chestertown, Maryland 21620

These days, joining the Chamber is smarter than ever!

With your Chamber membership, you receive exclusive advertising and networking opportunities, great exposure for you and your organization, and a host of members-only perks.

Visibility

Stand out and get noticed in the community.

Networking

It's the best way business relationships are formed and maintained.

Credibility

Build and maintain your reputation through Chamber membership.

Have a Voice

Gain a say in what happens in government through the Chamber's advocacy efforts.

Learning

Take advantage of exclusive training opportunities on a variety of topics.

Discounts

Increase your purchasing power with members-only discounts and perks.

Now is the time to become a Chamber member ... and start taking advantage of these exclusive benefits today!

©2021 Kent County Chamber of Commerce. All rights reserved.



Visit: kentchamber.org





A BED AND BREAKFAST INN

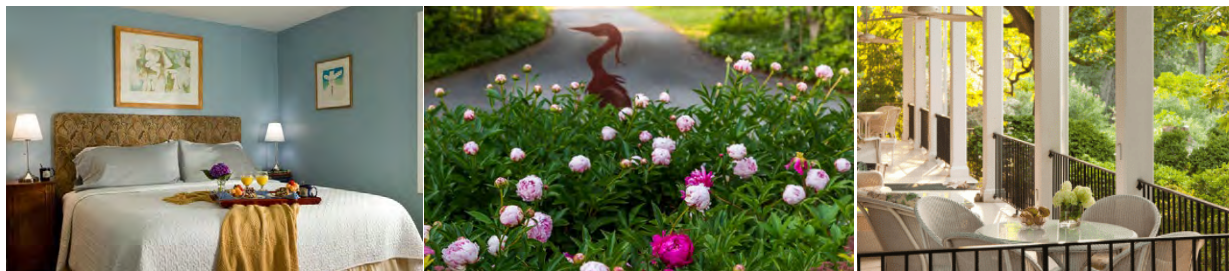
Chestertown, Maryland



WELCOME TO OUR MARYLAND INN!

A Romantic Maryland Bed and Breakfast You'll Never Want to Leave

The historic Brampton Inn sits on 35 acres of landscaped gardens, meadows, and forest on Maryland's Eastern Shore. Our small inn is a stone's throw from the quaint town of Chestertown, Maryland, and Washington College.



Brampton Bed and Breakfast Inn
25227 Chestertown Road Chestertown, MD
410-778-1860
bramptoninn.com