

Long Wharf Plan Update

Community Meeting
February 8, 2023

CITY OF NEW HAVEN
JUSTIN ELICKER, MAYOR
BOARD OF ALDERS

TOGETHER

NEW HAVEN

Today's Discussion

- Welcome
- Long Wharf Plan & District Updates
- Q&A / Next Steps

<https://www.togethernewhaven.com/>



Let's Talk about Long Wharf

Development - Health - Environment

THE PARISH HOUSE AT
BESTY ROSS SCHOOL
150 KIMBERLY AVE

A 2 Hour Discussion

Community meeting!

Wednesday
Feb 8
6 pm - 8 pm
at The Parish House
Betsy Ross School,
150 Kimberly Avenue

Speakers:



Justin Elicker
New Haven Mayor

Carmen Rodriguez
Alder 6th Ward

For More Information: www.newhavenct.gov

Long Wharf Plan

Family Park

Tech Village

*Innovation
District*

TOGETHER
NEW HAVEN



Investment Goal - \$1.9B - \$2.3B

- 7.7 SF Million new development
- 4,600 new housing units
- 3.5K new jobs
- \$14M new annual taxes



HILL NEIGHBORHOOD

Gateway Innovation

Market

Parkway

WOOSTER SQUARE

3RD ST
4TH ST
HOWARD AVE
HALLOCC AVE

ONE LONG WHARF

NEW HAVEN VILLAGE SUITES

JORDAN'S FURNITURE

REGIONAL WATER AUTHORITY

ASSA ABLOY

HUMMEL BROTHERS

LONG WHARF THEATRE

IKEA

PERELLI

UNION STATION

CT DOT

DAK STREET CONNECTOR
OLIVE ST
U.S. HWY 1

BAY VIEW PARK
SOUND SCHOOL
LONG WHARF NATURE PRESERVE

VIETNAM VETERANS MEMORIAL

Long Wharf Park

Harbor

BOAT HOUSE

LONG WHARF PIER

1 MARITIME



0 500 1000 FT

District Updates



2022 Voyage for Freedom

Discovering Amistad and the Amistad Committee
Welcome the Schooner Amistad Back to Her Homeport.

June 29 - July 4 & August 1 - September 3

FREE Dockside Tours
Aboard the Schooner Amistad
Long Wharf Pier

July 1, 4 - 6pm

JOIN US

JUNE 30
4 - 6pm Film Discussion: "Stephen Spielberg's Amistad: Fact or Fiction", Stetson Library, Q House, 197 Dixwell Avenue

JULY 1
4 - 6pm FREE Dockside Tours
6 - 8pm Artists Showcase, Canal Boat House, 475 Long Wharf Drive

Environmentally Preferred

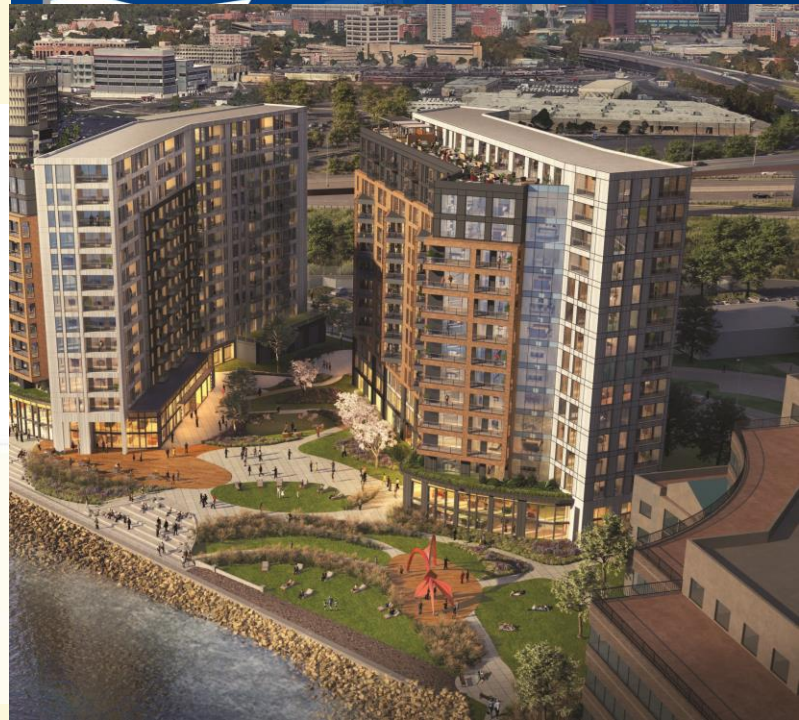
vizient.
Awarded Supplier

ASSA ABLOY

| | | |
|---|---|---|
| <p>Product TRANSPARENCY</p> <p>214 Greenguard Gold Certifications</p> <p>116 Environmental Product Declarations</p> <p>16 Declare Labels</p> <p>35 Health Product Declarations</p> <p>12 Third-Party Verified HPDs & Declare Labels</p> | <p>Waste DIVERSION</p> <p>OVER 83% Waste Diversion from Landfill at 4 Audited Plants</p> <p>OVER 92% Waste Diversion from Landfill at 4 Audited Plants</p> | <p>Product-Specific CERTIFICATION</p> <p>82 Multi-Attribute Certified Environmental Facts Labels</p> <p>27 Products with Certified Energy Savings Claims</p> |
| <p>Carbon Footprint REDUCTION</p> <p>7 Audited Facilities with Carbon Footprint Reduction</p> | <p>2025 Environmental TARGETS</p> <p>25% Reduction in Energy</p> <p>Reduction in Carbon Footprint</p> <p>Reduction in Water Consumption</p> <p>Reduction in Non-Hazardous Waste</p> <p>Reduction in Hazardous Waste</p> <p>Reduction in Organic Solvent Use</p> | |

Copyright © 2019, 2021, ASSA ABLOY Sales and Marketing Group, Inc., an ASSA ABLOY Group company. All rights reserved. Reproduction in whole or in part without the express written permission of ASSA ABLOY Sales and Marketing Group, Inc. is prohibited. T 903 1221

**TOGETHER
NEW HAVEN**



Canal Dock Boathouse



Moratorium & New Zoning

Current Status: Moratorium in place today and the City continues to draft new zoning regulations consistent with the Long Wharf Plan.

- Goals:**
- Increase Allowable Uses
 - Discourage Detrimental Uses
 - Encourage Multi-Use Spaces
 - Increase FAR and Density
 - Resiliency Requirements
 - Sustainability Co-benefits
 - Flood Protection
 - Urban Heat Island

Coastal Resiliency & Flood Wall



I-95 & Flood Wall

Long Wharf Drive

New Park Improvements

Long Wharf Park



SARGENT DRIVE

I-95



TENSILE STRUCTURE
FOOD TRUCK PAVILLION



CLIVJS MULTRUM
RESTROOMS

SOUTH PARKING LOT - 72 SPACES

FOOD TRUCK PARADISE PARKING
32 PARALLEL SPOTS
24 FOOD TRUCK SPOTS

NORTH PARKING
79 PARKING SPACES

I-95 ON RAMP



- 15 KID PLAYSCAPE
- 16 OPEN MARKET
- 17 RE SKINNED SNACK SHACK
- 18 MARSH PATHWAY

- 21 UNDERPASS PARKING
- 22 NORTH ROUNDABOUT
- 23 WOONERF

- EXISTING TREE
- PROPOSED TREE
- PROPOSED LIGHT POLES
- PROPOSED TABLES
- PROPOSED BENCHES



STONY CREEK CHIP SEAL MATERIAL
PROMENADE + FURNITURE ZONE





JS MULTRUM ROOMS



CLOCK TOWER
OPEN MARKET



PAVILIONS

NORTH PARKING LOT
79 PARKING SPACES

SHARED TRAVEL LANE
30 PARALLEL PARKING POTS

40 PARKING SPOTS
MOUNTABLE CURB

67 PARKING SPACES

14

15

16

18

20

19

21

22

23

DROP-OFF

EDGE OF EXISTING



STONY CREEK CHIP SEAL MATERIAL
— PROMENADE + FURNITURE ZONE

BIKE LANE
EXISTING REVETMENT

FEMA FLOOD ZONE

BOATHOUSE



LONG ISLAND SOUND





**TOGETHER
NEW HAVEN**

Long Wharf Drive - Harbor District

Harbor District Woonerf

Concept Design



Woonerf Inspiration



Landmark Interactive Sculpture

Pump House



Cafe Seating



Sculptural Seating



Stepping Stone Pathways



P Parking



Water Plaza



**TOGETHER
NEW HAVEN**

Gateway District



Three Key Sites

- Old Gateway
- Regional Water
- 1 Long Wharf Parking Lot

+ 20 Acres



Future

1 – New Buildings

- Education
- Health Care
- Operations / Logistics
- Retail / Commercial

2 – New Stormwater Parks

3 – New Parking Garage(s)



Potential New Developments

Gateway Career Center

- Automotive
- Transportation
- Utility
- Other

Regional Water Authority

- Administration
- Operations
- Private Commercial

New APT Building

- Administration
- Counseling
- Clinic
- Pharmacy





EXIT

EXIT



Hand sanitizer dispenser





2023 Work Plan

- Form Advisory Committee
- Acquire Old Gateway
- Advance a Development Agreement(s)
- Develop District Management Plan
- Adopt New Zoning
- Develop Site Plan
- Prepare Transportation Design

**Community
Engagement
Throughout
Process**

Thank you.

CITY OF NEW HAVEN
JUSTIN ELICKER, MAYOR
BOARD OF ALDERS

TOGETHER

NEW HAVEN