

loren stewart

*FW23*



# ALL THAT JAZZ

“I wanted to design intriguing pieces that are timeless but feel new. You can wear them today or 20 years from now.”  
– Rachel Loren

Inspired by secretive speakeasies of the 1920s where carefree women felt free to flaunt their style, the FW23 collection is an ode to the jazz age. Strings of iridescent pearls can be worn a multitude of ways—around the neck, wrists or waist. Lighthearted moons, hearts and candy-like gems dangle from huggie earrings. Silk cord and Japanese velvet neckties are adorned with playful pearl pendants. Minimal bezel and prong set gemstones like amethyst, blue kyanite, pink tourmaline and green onyx decorate classic chains.

Signature safety pin earrings are accented with sapphires or double as a brooch. Original Rod Earrings return with new details and pearl embellishments. The Boujee Pearl necklace is updated with a red thread, a symbol of courage and passion. The Evil Eye Pearl on Cord is an interpretation of the Nazar evil eye talisman, worn as a lucky charm. Opulent and sensual this jewelry is fit for illicit nightlife and beyond.





N11082-YG-16  
ZELDA PEARL NECKLACE

S11043-BL-PAIR  
CIELO MINI GEM HUGGIES



S11048-YG-DIA  
DIAMOND LONG ROD

S11031-YG-PNK  
LA CHANDELLE STUD





N11086  
CIELO AMULET NECKLACE



S11035-YG  
LA CHANDELLE LINK EARRINGS

S11031-YG-BL  
LA CHANDELLE STUD





R20020-PLT  
LINKED PHAT BAND

R11010-MIX  
CLASSIC DOOR KNOCKER RING



N11047-YG-RD-16  
BOUJEE PEARLS





S11042-YG-EC  
LANYARD HOOPS

S11040-SS  
LANYARD PEARL HOOPS





N11077  
EVIL EYE PEARL ON CORD



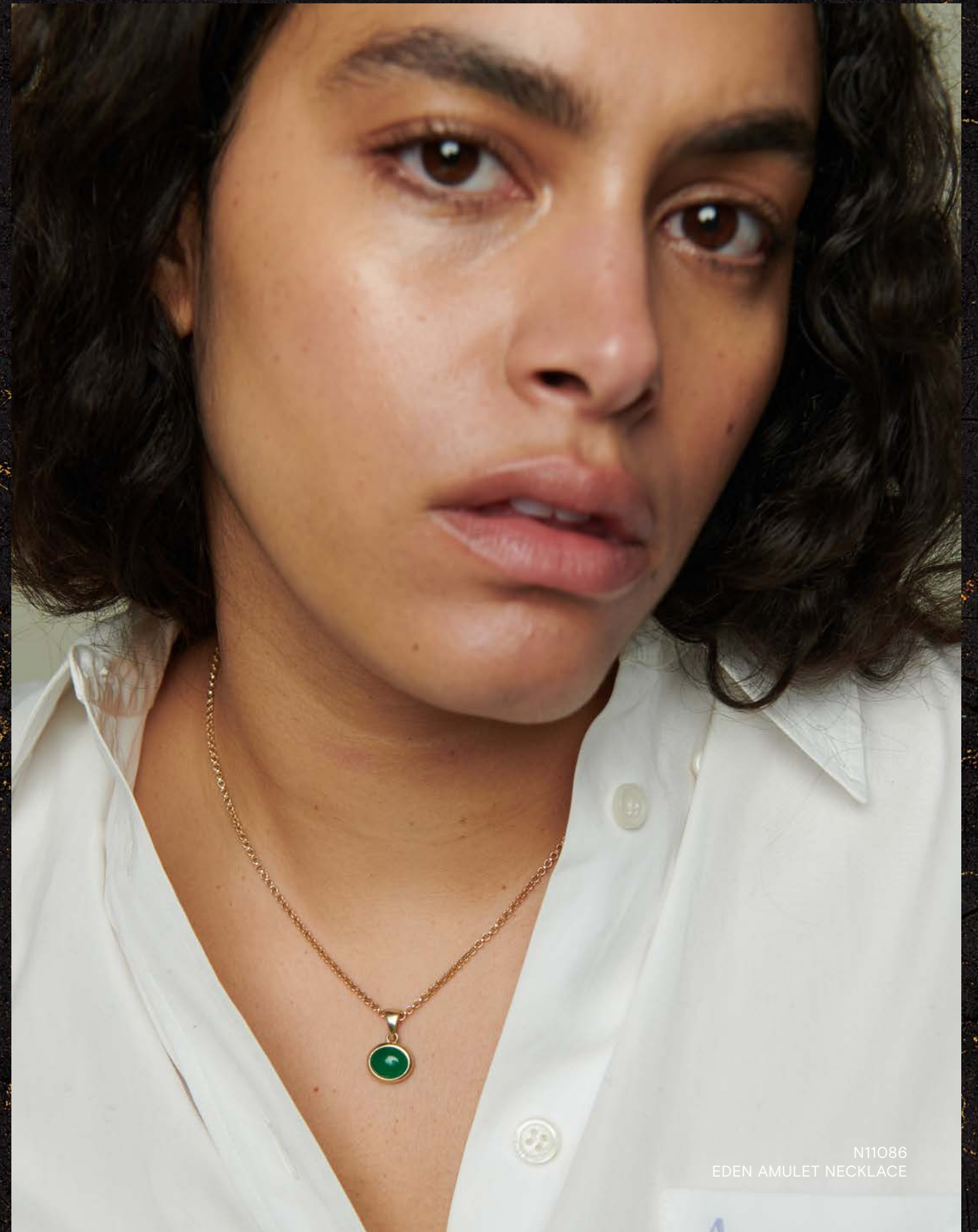
S11039-MIX-PAIR  
XL GORDITA HUGGIES





S11045-BL  
CIELO BEZEL HOOPS

S11045-GR  
EDEN BEZEL HOOPS



N11086  
EDEN AMULET NECKLACE





S11050-YG  
ROD PEARL STUD

S11052-YG-PRL-BL-SNGL  
XL PEARL GEM SAFETY PIN

S0009-YG-SNGL  
ONE DIAMOND ROD



N11047-YG-RD-16  
BOUJEE PEARLS





N11079-YG-BL-16  
GLOBO PEARLS



B11020-YG  
LA BANGLE





N11086  
CIELO AMULET NECKLACE



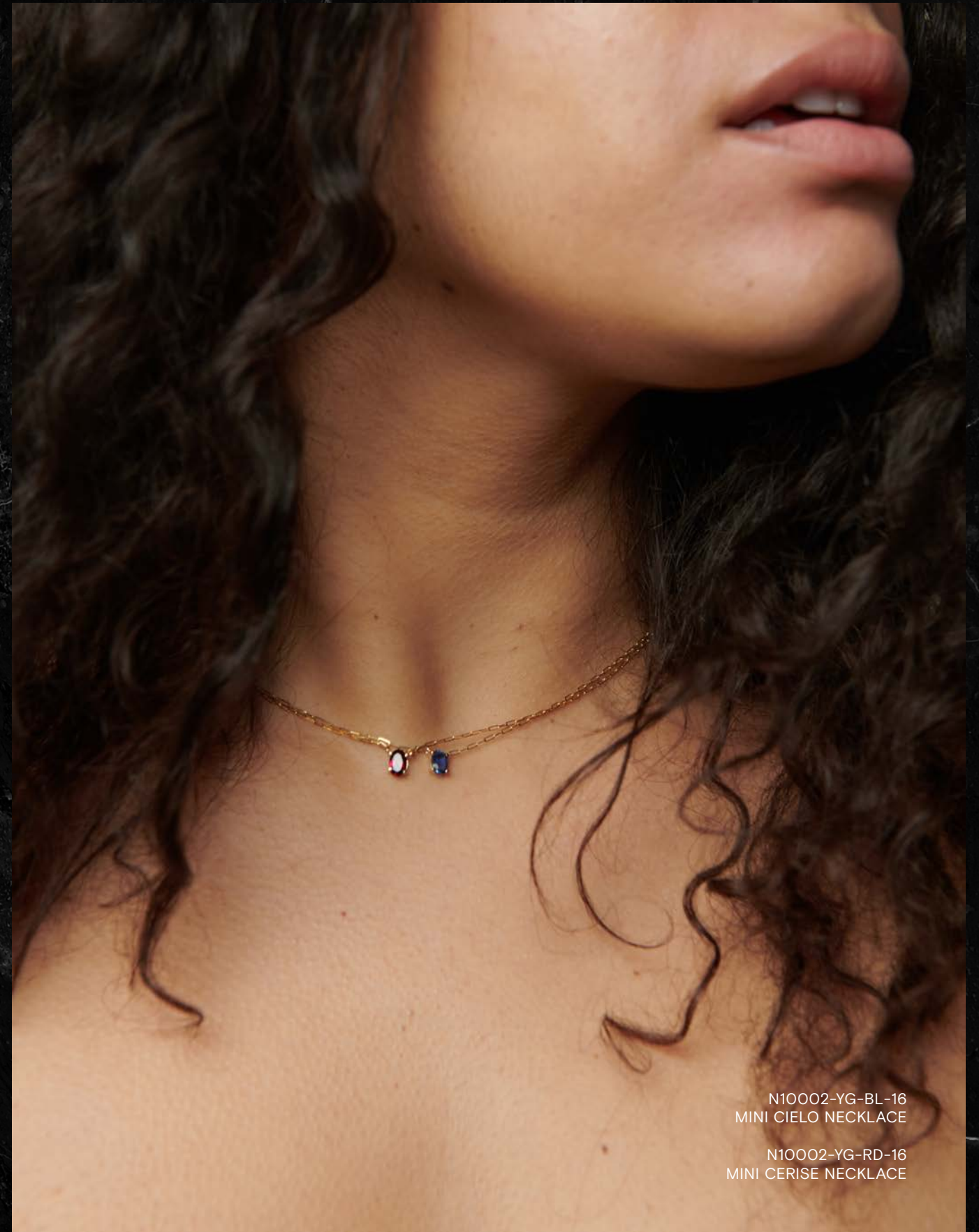
R11010-MIX  
CLASSIC DOOR KNOCKER RING

R11011-SS  
LANYARD OPEN BAND





N11083-YG-BL-43  
DULCE PEARL NECKTIE



N10002-YG-BL-16  
MINI CIELO NECKLACE

N10002-YG-RD-16  
MINI CERISE NECKLACE





S11042-YG-EC  
LANYARD EAR CUFF

S11042-SS-EC  
LANYARD EAR CUFF



N11093  
SUKI PEARL COLLAR





N11092-YG-16  
LUNA NECKLACE



S11038-YG-PAIR  
AMORE MIO HUGGIES

S11046  
LUNA HUGGIES





N11081-YG-BL-32  
OPERA WRAP PEARL STRAND



R80000-PLT  
DOUBLE PUFF BAND



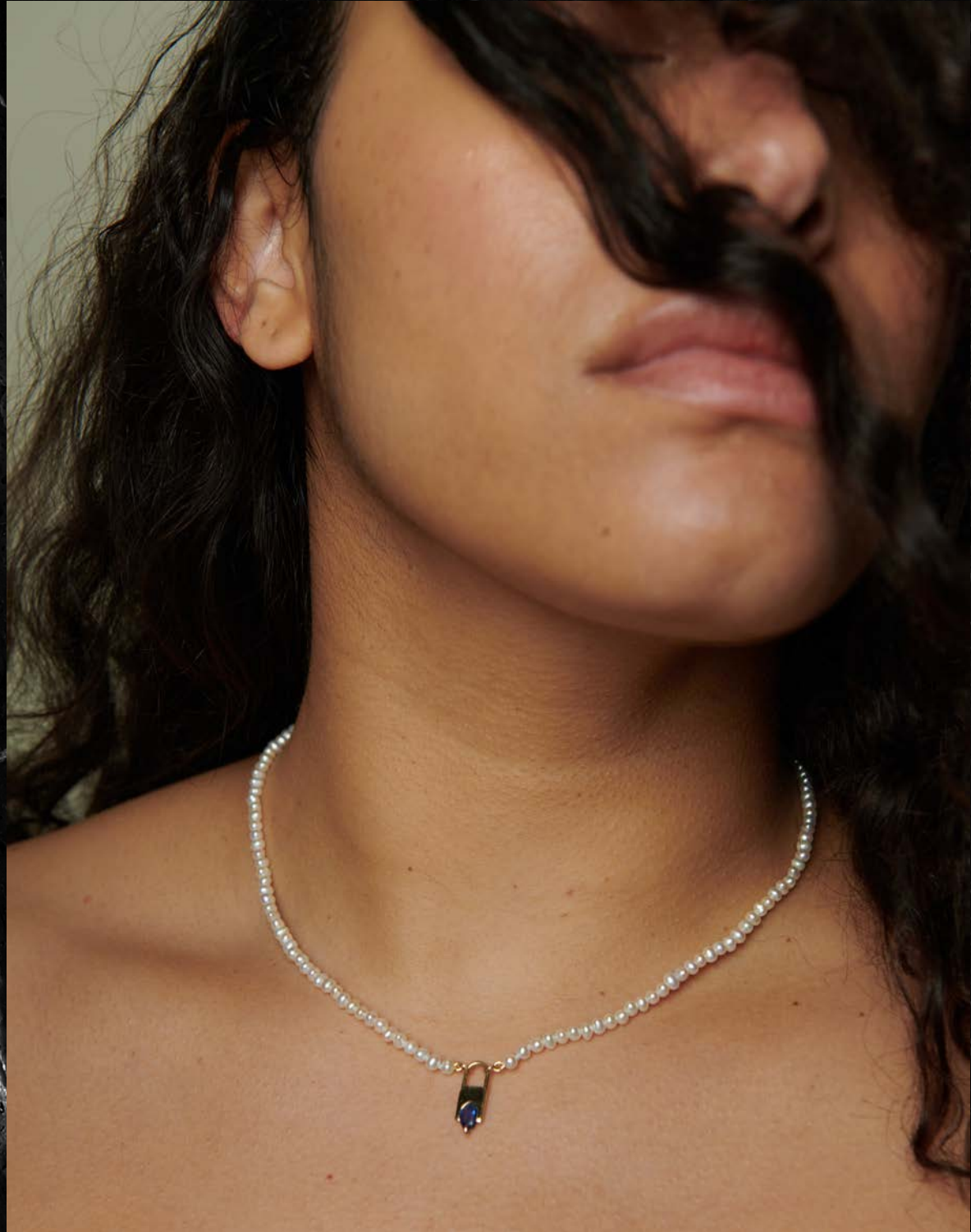


S11051-YG-BL  
GEMSTONE SAFETY PIN



N11078-YG-16  
EVIL EYE PEARL NECKLACE





N11091-YG-BL-16  
LUCHETTA PEARL NECKLACE



S11052-YG-PRL-BL-SNGL  
XL PEARL GEM SAFETY PIN



LOS ANGELES, CA  
**All That Jazz**

LOREN STEWART PRESENTS  
**Brittany Battisti**

PHOTOGRAPHS  
**Adeline Wohlwend**

DESIGN  
**Kaylee Coates**

SHOWROOM  
**Sarah@deckcollective.com**  
**917.912.4528**

PRESS  
**pr@lorenstewart.com**  
**lorenstewart.com**  
**@lorenstewart**

N11081-YG-BL-32  
OPERA WRAP PEARL STRAND