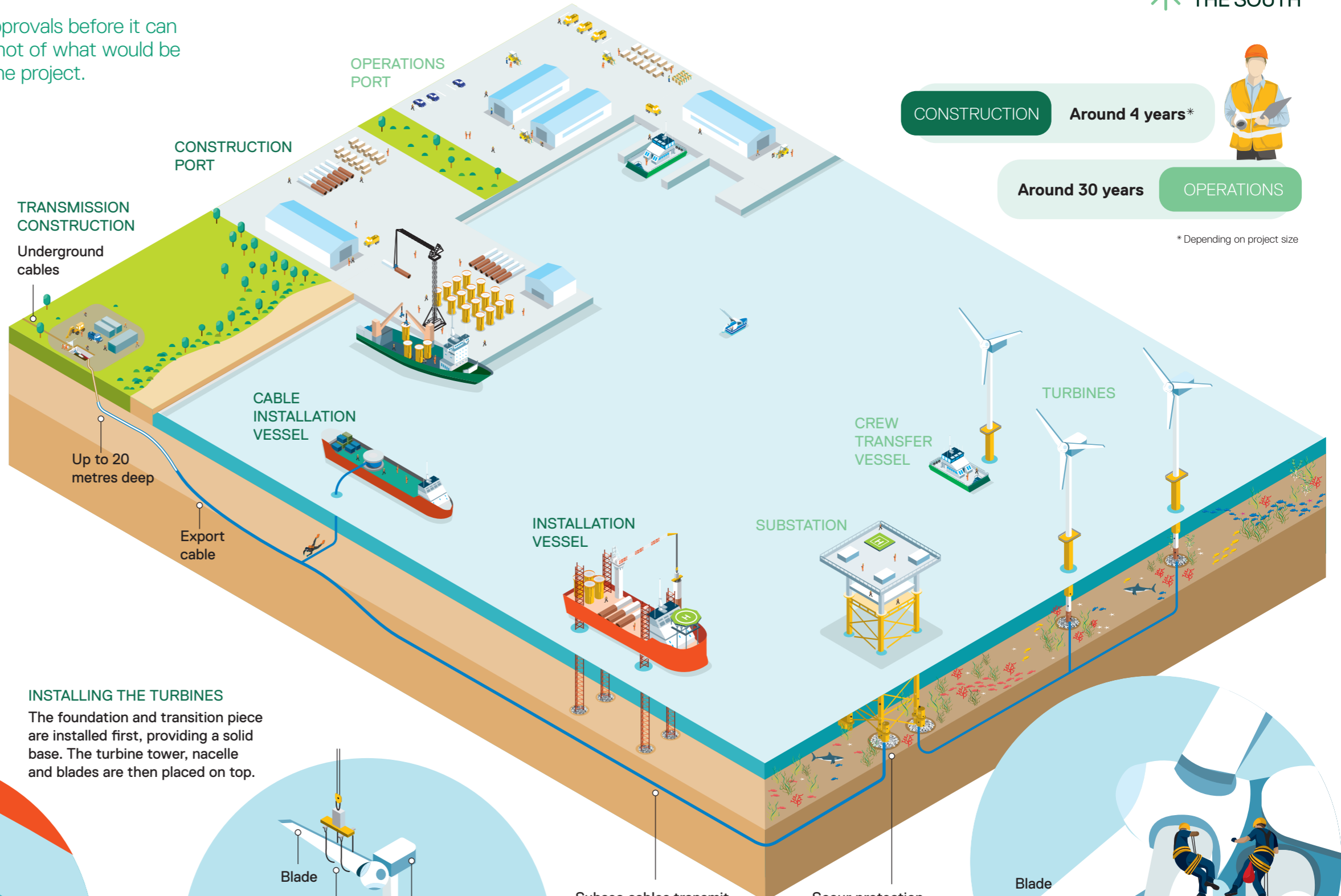
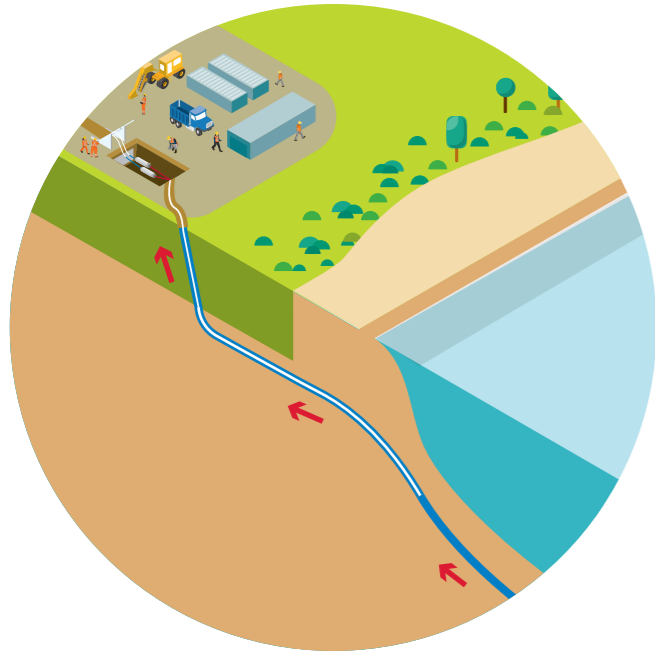


WHAT'S INVOLVED?

Star of the South will need a range of approvals before it can proceed to construction. Here's a snapshot of what would be involved in constructing and operating the project.

BRINGING CABLES TO SHORE

Cables are connected to land by pulling them underground through a duct, protecting the beach and dunes.



CONSTRUCTION Around 4 years*

Around 30 years **OPERATIONS**



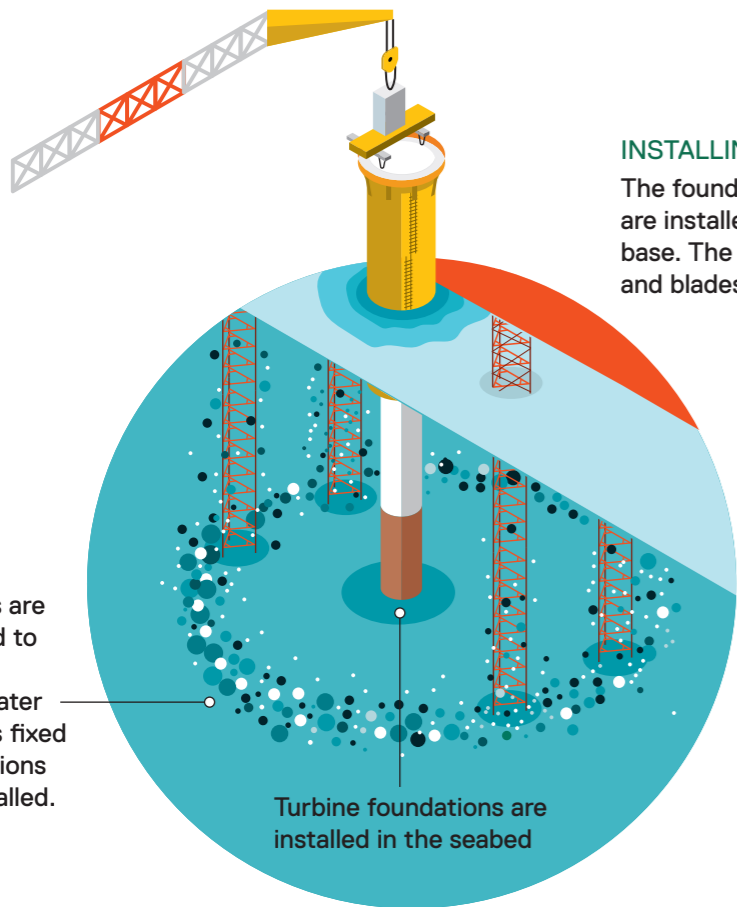
* Depending on project size

INSTALLING THE TURBINES

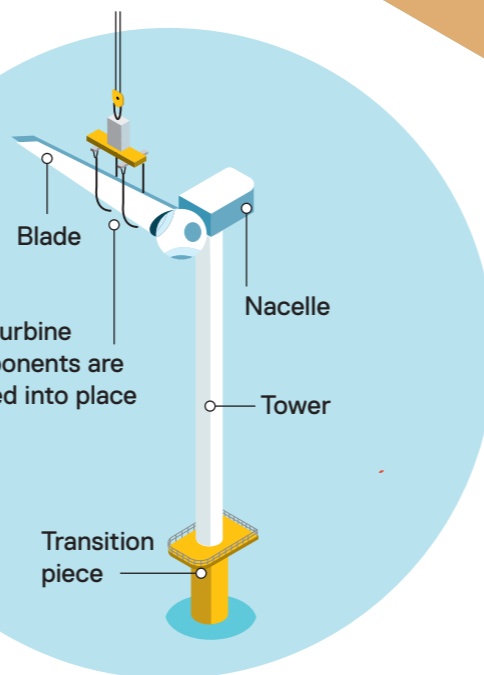
The foundation and transition piece are installed first, providing a solid base. The turbine tower, nacelle and blades are then placed on top.

Bubbles are released to reduce underwater noise as fixed foundations are installed.

Turbine foundations are installed in the seabed



The turbine components are slotted into place



Subsea cables transmit electricity from the turbines to the substation, and from the substation to shore.

Scour protection around foundation bases protects them from erosion from waves and currents.

OPERATIONS AND MAINTENANCE

Workers travel from an operations port to undertake maintenance and keep the wind farm running.

Blade Technician

