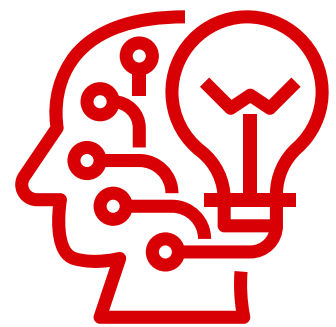
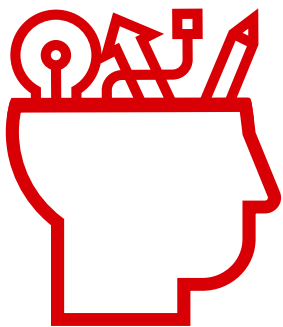


Psychology CPD WELL

Centre for Student Counselling and Development
Stellenbosch University

2021 HPCSA-accredited service provider



A comprehensive, one-year continuing professional development programme for psychologists, psychometrists and counsellors



UNIVERSITEIT
iYUNIVESITHI
STELLENBOSCH
UNIVERSITY

100
1918 - 2018

Contents

Psychology CPD WELL	1
– About us	
How does our programme work?	2
– Programme structure	
– Registration Process	
Psychology CPD WELL courses	3
Option A Full-day workshop information	4
– NEW! Student discount information	5
Course prices for 2022	6
NEW! Group rates for 2022	7

Psychology CPD WELL

About us

The Psychology CPD WELL programme at the Stellenbosch University (SU) Centre for Student Counselling and Development is a comprehensive, one-year continuing professional development programme for psychologists, psychometrists and counsellors. Our programme is registered with the Division for Short Courses at SU. As an accredited service provider, Psychology CPD WELL is designed to assist you in maintaining and developing

your academic and professional credentials as a healthcare practitioner. Our programme offers you a convenient and affordable platform with various options to acquire all the Continuing Education Units (CEUs) you need. In addition, it will help you comply with Health Professions Council of South Africa (HPCSA) regulations, as earning CEUs is mandatory to retain your professional registration.

Contact us

If you have any questions or queries, a staff member will always be happy to help. Feel free to contact us by telephone or e-mail, and we will be sure to get back to you as soon as possible.



Office hours: 08:00 – 16:30 (South Africa Standard Time, GMT +2)



37 Victoria Street, Stellenbosch 7600



021 808 4707



cpdwell@sun.ac.za

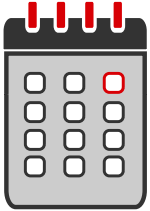


www.psychologycpdwell.com



CDP WELL Registration

How does it work?



Enrolment for our courses is done annually.



All 2022 course registrations open on 25 January and close on 14 November.

Please note that Option A is only a full-day workshop, and registration closes on 30 May.



Participants can register for one or more of the course options.



The 2022 course duration is from 15 March to 25 November.

Please note that Option A is a full-day workshop that takes place on 2 June.

Registration process

1



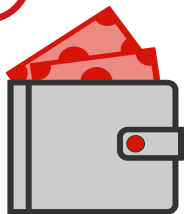
Visit www.psychologycpdwell.com and complete the online registration form.

3



Once your course payment reflects in our bank account, you will receive an e-mail from no-reply@sun.ac.za with your verification link and “SUNOnline Short Course Step 1 (of 4)” in the subject line. *Please ensure that you complete all four steps.*

2



The payment information will be sent via email.

Payment methods:

- Credit card
- Invoice requests to cpdwell@sun.ac.za
- Electronic Funds Transfer (EFT)

* For EFT payments, please use the payment reference number e-mailed to you and send proof of payment to cpdwell@sun.ac.za.

4



Once you have completed the verification process, you can access your course material via <https://online.sun.ac.za/>.

5



Electronic certificates and transcripts stating the CEUs earned will be generated and e-mailed to each participant after the course closes.

Psychology CPD WELL Courses

Option A is a one-off full-day workshop that can be attended in-person at STIAS, Stellenbosch or online via YouTube.

OPTION A (face-to-face):

Full-day workshop (2 June 2022):
Psychopharmacology
(Level 1: 7 CEUs including 1 Ethics CEU).

OPTION A (online):

Online full-day workshop (2 June 2022):
Psychopharmacology
(Level 1: 7 CEUs including 1 Ethics CEU).

OPTION C: General:

Online: Study ten topical journal articles, including two ethics articles
(Professional interest group, Level 2: 30 CEUs, including 6 Ethics CEUs)

OPTION C: Industrial Psychology:

Online: Study ten topical journal articles, including two ethics articles
(Professional interest group, Level 2: 30 CEUs, including 6 Ethics CEUs)

OPTION B & C General

OPTION B:

Online: Study PowerPoint presentations and videos
(Professional interest group, Level 2: 12 CEUs, including 3 Ethics CEUs)

OPTION C General:

Online: Study ten topical journal articles, including two ethics articles
(Professional interest group, Level 2: 30 CEUs, including 6 Ethics CEUs).

OPTION B & C Industrial Psychology

OPTION B:

Online: Study PowerPoint presentations and videos
(Professional interest group, Level 2: 12 CEUs, including 3 Ethics CEUs).

OPTION C Industrial Psychology:

Online: Study ten topical journal articles, including two ethics articles
(Professional interest group, Level 2: 30 CEUs, including 6 Ethics CEUs).

NEW OFFERINGS!

Still short on CEUs? Look no further. Fill the gap by choosing one of the options below:

TOP-UP 9 CEUs:

Online: Study three topical journal articles, including one ethics article
(Professional interest group, Level 2: 9 CEUs, including 3 Ethics CEUs)

TOP-UP 15 CEUs:

Online: Study five topical journal articles, including two ethics articles
(Professional interest group, Level 2: 15 CEUs, including 6 Ethics CEUs)

Psychopharmacology: Do you know what you need to know?

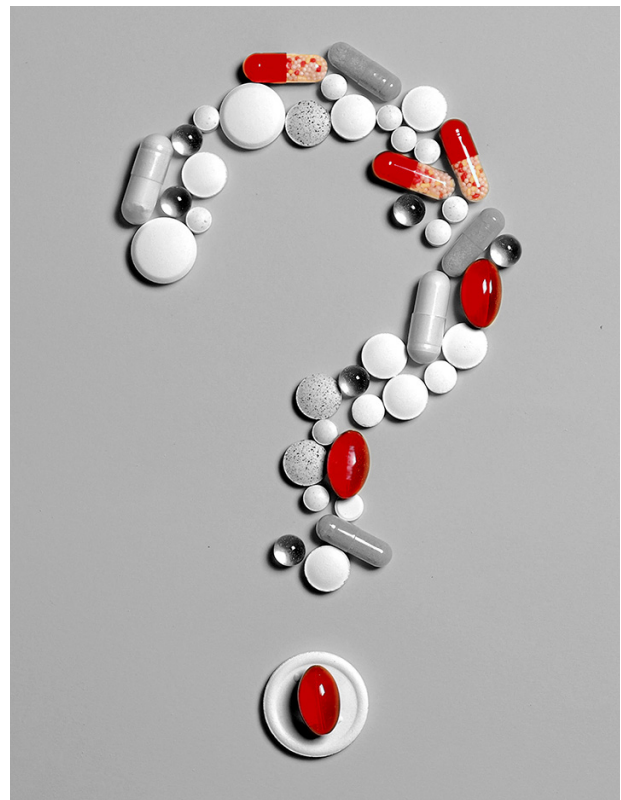
Presented by Dr Chris Verster

Option A is a CPD-accredited full-day (7 hours) workshop focusing on Psycho-pharmacology. The workshop is accredited for a total of 7 CEUs (6 CEUs and 1 Ethics CEU) and is accredited at the HPCSA for all allied professions.

Date: 2 June 2022 | **Time:** 08:30 – 16:30 | **Venue:** STIAS, Stellenbosch (face-to-face) OR online via live streaming on YouTube.

Dr Gerrit Christiaan Verster is a healthcare practitioner and currently the Head of the Clinical Unit: Psychiatry at Worcester Hospital, Western Cape. Their current interests are public mental health, sleep disorders in psychiatry and medical ethics. This full-day workshop will focus on several aspects such as psychiatric treatment methods, the development of psychopharmacology, modern psychiatric medicine, other classes of medication and lastly, considering controversial aspects of psychopharmacology. This workshop aims to rediscover psychopharmacology and provide other considerations that may be important to look out for.

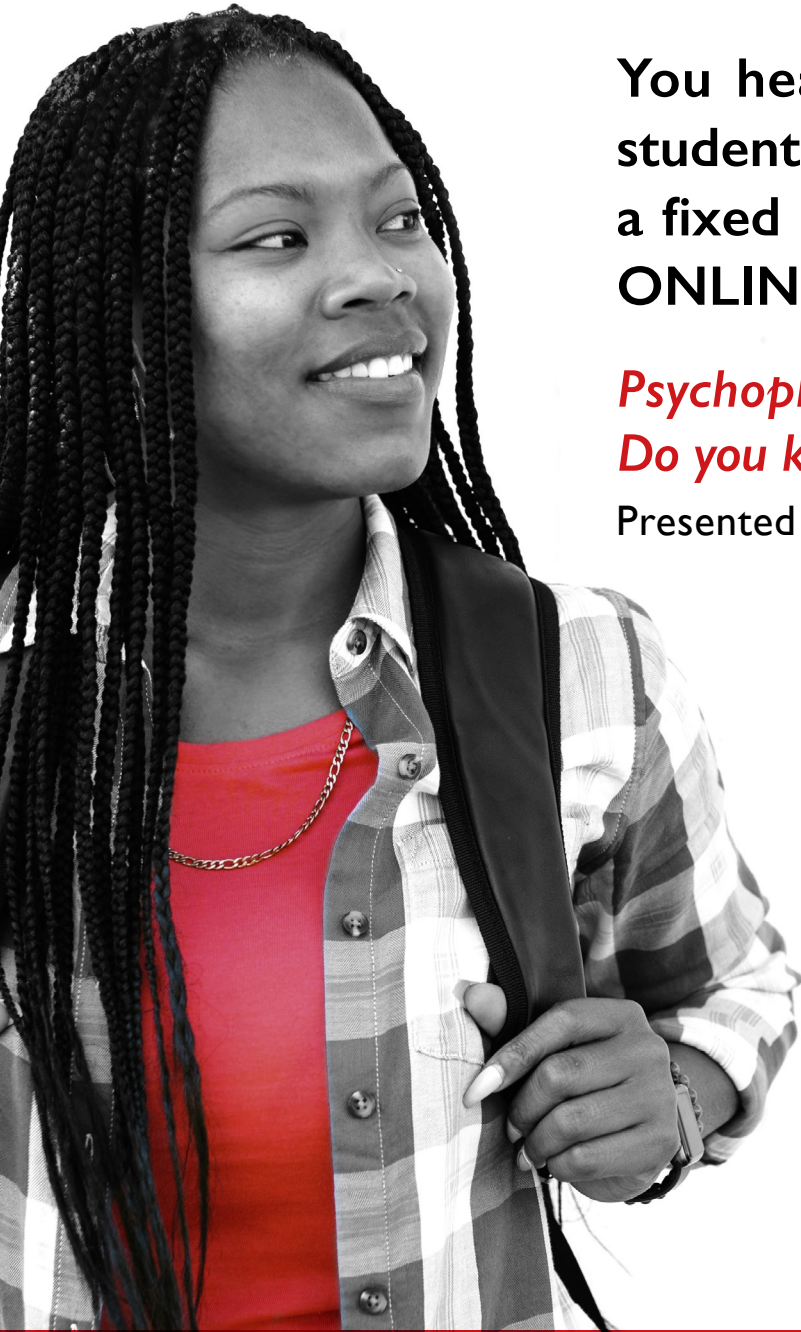
Please refer to the contents page for Option A prices and the registration process (p. II).



Student Discount

You asked for it

Special student discount on
our **ONLINE** full-day workshop!



You heard it right! All master's students and student interns pay a fixed rate of **RI 500.00** for our **ONLINE** full-day workshop.

Psychopharmacology:

Do you know what you need to know?

Presented by Dr Chris Verster

2 June 2022

08:30 to 16:30

All queries can be directed to
cpdwell@sun.ac.za / 021 808 4707

Course Prices for 2022

Option A

BEFORE 28/02/2022	Existing Clients	New Clients
Option A (Face-to-face) 2 June 2022	R2 385,00	R2 810,00
Option A (Online) 2 June 2022	R1 720,00	R2 150,00

Existing clients

OPTION	BEFORE 28/02/2022	AFTER 28/02/2022
Option C General	R3 170,00	R3 333,00
Option C Industrial Psychology	R3 170,00	R3 333,00
Option B plus C General OR Industrial Psychology	R3 750,00	R4 165,00

New clients

OPTION	BEFORE 28/02/2022	AFTER 28/02/2022
Option C General	R5 865,00	R6 545,00
Option C Industrial Psychology	R5 865,00	R6 545,00
Option B plus C General OR Industrial Psychology	R7 205,00	R7 630,00

CDP WELL: NEW Top-Up options

OPTION	BEFORE 30/06/2022	AFTER 30/06/2022
Top-Up 9 CEUs (Option C General)	R1 250,00	R1 375,00
Top-Up 9 CEUs (Option C Industrial Psychology)	R1 250,00	R1 375,00
Top-Up 15 CEUs (Option C General)	R2 050,00	R2 255,00
Top-Up 15 CEUs (Option C Industrial Psychology)	R2 050,00	R2 255,00

Group Rates 2022

Disclaimer: The group discount only applies to companies / privately owned practices / government institutions (for the 2022 course duration).

Existing clients (Registrations before 28 February 2022)

Option C General and Option C Industrial Psychology

GROUP SIZE	DISCOUNT	AMOUNT PER PARTICIPANT
5 participants	5%	R3 011,50
10 participants	10%	R2 853,00
20 participants	15%	R2 694,50

Option B plus C

GROUP SIZE	DISCOUNT	AMOUNT PER PARTICIPANT
5 participants	5%	R3 732,55
10 participants	10%	R3 536,10

Existing Clients (Registrations after 28 February 2022)

Option C General and Option C Industrial Psychology

GROUP SIZE	DISCOUNT	AMOUNT PER PARTICIPANT
5 participants	5%	R3 166,35
10 participants	10%	R2 999,70
20 participants	15%	R2 833,05

Option B plus C

GROUP SIZE	DISCOUNT	AMOUNT PER PARTICIPANT
5 participants	5%	R3 956,75
10 participants	10%	R3 748,50

Group Rates 2022

New Clients (Registrations before 28 February 2022)

Option C General and Option C Industrial Psychology

GROUP SIZE	DISCOUNT	AMOUNT PER PARTICIPANT
5 participants	5%	R5 571,75
10 participants	10%	R5 278,50
20 participants	15%	R4 985,25

Option B plus C

GROUP SIZE	DISCOUNT	AMOUNT PER PARTICIPANT
5 participants	5%	R6 844,75
10 participants	10%	R6 484,50

New Clients (Registrations after 28 February 2022)

Option C General and Option C Industrial Psychology

GROUP SIZE	DISCOUNT	AMOUNT PER PARTICIPANT
5 participants	5%	R6 217,75
10 participants	10%	R5 890,50
20 participants	15%	R5 563,25

Option B plus C

GROUP SIZE	DISCOUNT	AMOUNT PER PARTICIPANT
5 participants	5%	R7 248,50
10 participants	10%	R6 867,00

Group Rates 2022

Top-Up 9 CEUs

Registration before 30 June 2022

GROUP SIZE	DISCOUNT	AMOUNT PER PARTICIPANT
15 participants	10%	R 1 125,00

Registration after 30 June 2022

GROUP SIZE	DISCOUNT	AMOUNT PER PARTICIPANT
15 participants	10%	R 1 237,50

Top-Up 15 CEUs

Registration before 30 June 2022

GROUP SIZE	DISCOUNT	AMOUNT PER PARTICIPANT
15 participants	10%	R 1 845,00

Registration after 30 June 2022

GROUP SIZE	DISCOUNT	AMOUNT PER PARTICIPANT
15 participants	10%	R 2 029,50