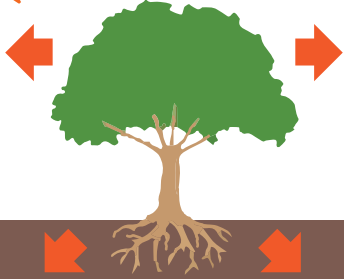


How to plant a TREE



STEP 1

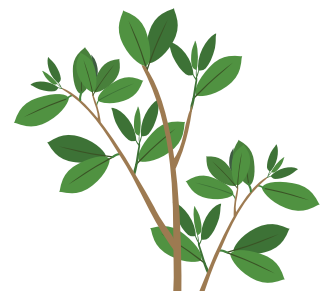
Choose a location that will allow the roots to spread and branches to grow freely; away from building foundations, walls, decks, windows and powerlines.



← 2X →

STEP 2

Dig a hole twice as wide and shallower than the root ball. The topmost root should be above ground level when the planting is done.



DON'T PLANT THE CONTAINER



STEP 3

Cut any large circling roots (approx. size of your pinky) where they begin circling. Shave* approx. 1" of the root ball all around, place root ball in hole 1-2" above soil line.



STEP 4

Fill the hole up to the soil line. The root ball should stick up above soil line by 1-2".



STEP 5

Water-in the soil to remove air pockets. Add 3" deep mulch from the sides of the root ball out to make an 8' diameter circle. **NO MULCH ON THE ROOT BALL.**

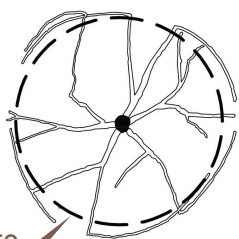


STEP 6

Apply 5 gallons of water slowly to the root ball at planting.
ONGOING:
Apply 2-3 gallons water per inch of trunk diameter, 2-3 times weekly through the next summer or longer, unless soil is already moist.

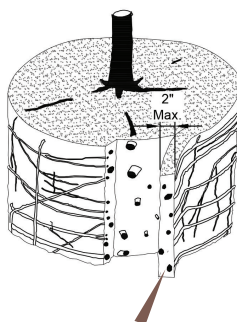
*SHAVING THE ROOT BALL

BEFORE SHAVING



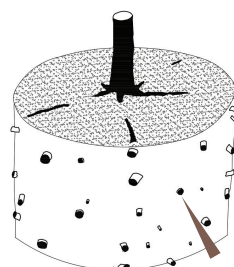
Shave root ball here to remove all roots growing on periphery.

SHAVING PROCESS



Shave outer periphery of the root ball a maximum of 2" thick.

SHAVING COMPLETE



Root tips exposed to periphery of root ball. All roots growing around periphery are removed.

NOTES:

1. Use a sharp blade or hand saw eliminating no more than needed to remove all roots on the periphery of the root ball.
2. Perform shaving just prior to planting in the hole.