

COVID-19 REOPENING SURVEY DATA

FROM THE RISK AND SOCIAL POLICY GROUP

AN INTERDISCIPLINARY COLLABORATIVE OF >15 SCHOLARS ACROSS THE UNITED STATES FUNDED BY THE NATIONAL SCIENCE FOUNDATION

DATA FROM A MAY/JUNE 2020 REPRESENTATIVE SAMPLE OF 3,059 ADULTS (AVG AGE=43) IN SIX U.S. STATES (CO, IA, LA, MA, MI, WA)

PHYSICAL AND MENTAL HEALTH

Physical Health

- 75% of participants reported excellent or good physical health; **80% said their physical health was about the same as before COVID-19**, 12% said it has gotten worse, and 8% said better

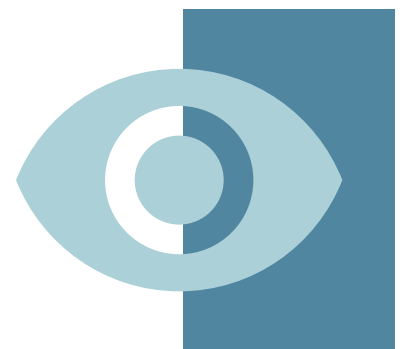
Mental Health

- 70% of sample reported excellent or good mental health; 68% said their mental health was about the same as before COVID-19, **25% said it has gotten worse**, and 5% said better



RISK PERCEPTIONS

- Participants thought there was a **28% chance they would contract COVID-19**
 - If they did contract COVID-19, participants thought there was a **34% chance they would become seriously ill** and a **22% chance they would die**
- Participants reported there was a **28% chance they would run out of money** due to COVID-19



RISK REDUCTION BEHAVIORS

Physical Distancing (6ft apart)

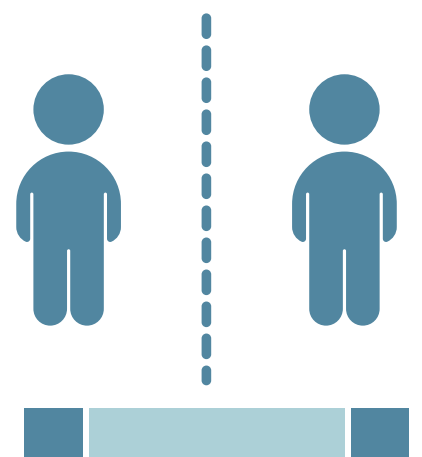
- 46% **always** physically distanced outside home

Masks

- 66% **always** wore a mask in public indoor spaces

Back to School

- 49% are somewhat/extremely likely to send their children back to school in the fall **if schools are open**



INFORMATION SEEKING

- 63%** of participants have somewhat/very closely been following **COVID-19 news coverage and information**
- 46% use **television** for COVID-19 information daily, 27% use **Facebook** daily, 20% use **government/academic sources** daily
- 49% never get COVID-19 information from **newspapers**, 46% never get COVID-19 information from **radio**



GOVERNMENT PERFORMANCE

Should policies change?

- 48% of participants said state policies should remain about the same, 31% thought they should be more strict, and 21% said restrictions were too strict in their state
- 51% disapprove/strongly **disapprove** of Trump's response
- 65% approve/strongly **approve** of responses from scientists



SEE COMPLETE REPORT AND LEARN MORE AT [RISKANDSOCIALPOLICY.ORG](https://riskandsocialpolicy.org)