



5G Small Cell Hazards & Better Technology Solutions

Cece Doucette

April 6, 2021

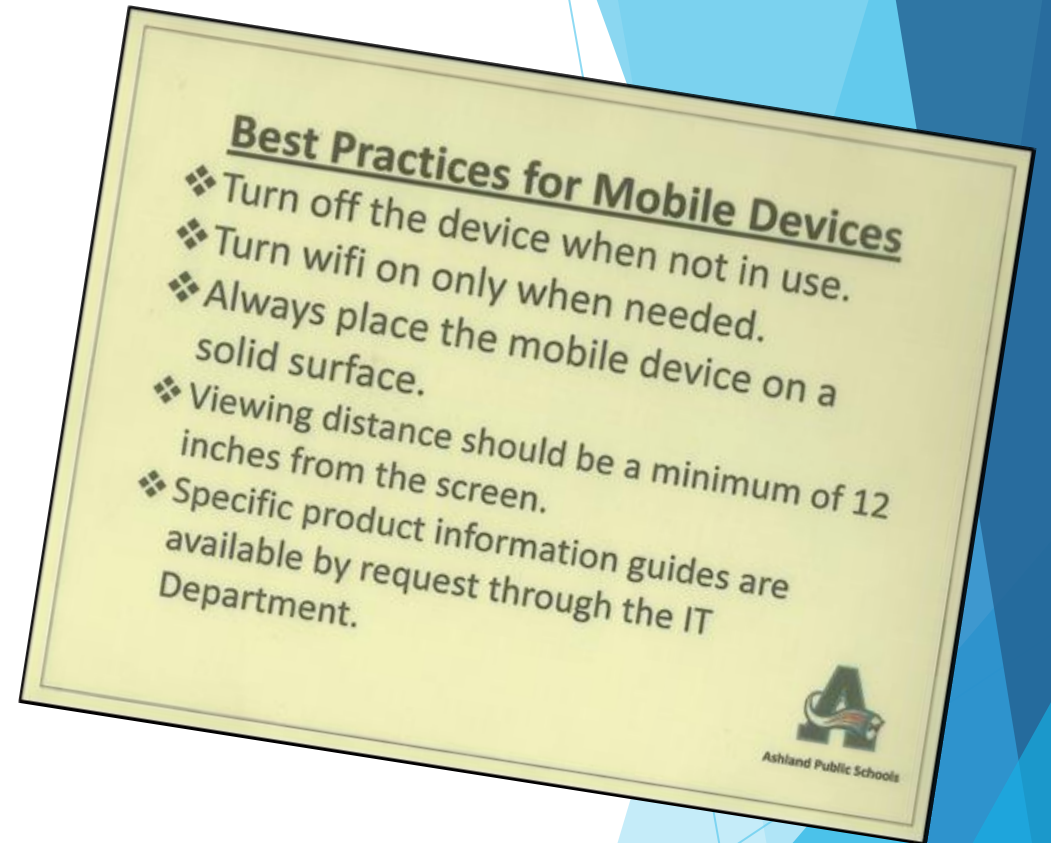
Cece Doucette, MTPW



- ▶ Helped Ashland, MA become first-in-nation with [Best Practices for Mobile Devices](#), 2014
- ▶ Introduced [legislation](#) in MA & testified in NH
- ▶ Co-founder, [Wireless Education](#), educational non-profit
- ▶ Co-founder, [Massachusetts for Safe Technology](#)
- ▶ [Co-Chair, Technology Panel, Health in Buildings Roundtable Conference @ NIH](#)
- ▶ Speaker: EMF Medical Conference [2021](#)

Overview

- ▶ Legal Fine Print
- ▶ Science
- ▶ Municipal Points of Emission
- ▶ Conflicts of Interest
- ▶ Better Solutions
- ▶ Next Steps



The Legal Fine Print

▶ See the Fine Print

▶ Settings

▶ General

▶ (About)

▶ Legal & Regulatory

▶ RF Exposure

▶ ALL wireless devices, “smart” technology, Internet of Things (IoT)

▶ Ashland, Newton, MA:
detection meter in public libraries



Science: Long-term Effects

▶ Child & Adult Cancers

▶ DNA Damage

▶ Infertility

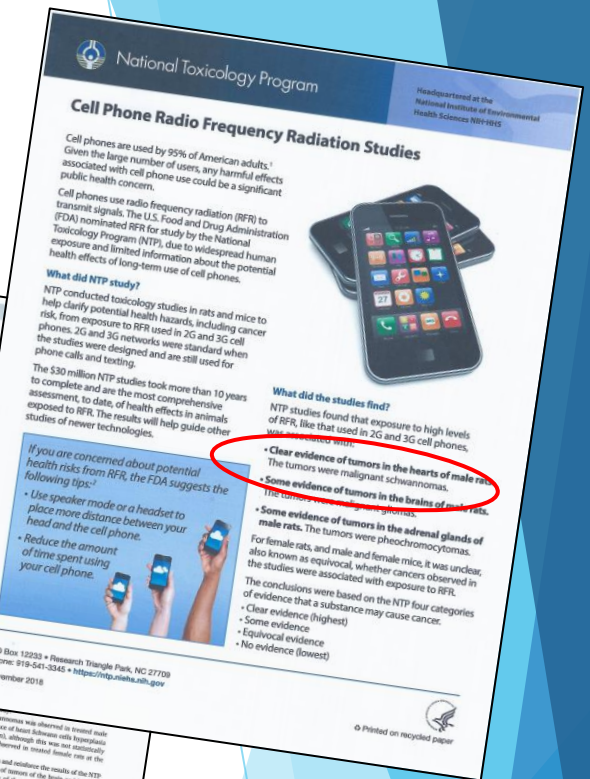
▶ Neurotoxicity

➤ ADD/ADHD

➤ Autism

➤ Alzheimer's

▶ Children are especially vulnerable (Andrea)



Science: Short-term Effects

▶ Electromagnetic Sensitivity/ADA

- Insomnia, nightmares
- Headaches
- Nosebleeds/earbleeds
- Fatigue
- Pain
- Skin abnormalities
- Irregular heartbeats
- Cognitive impairment
- Anger, behavior issues
- Anxiety, depression, suicidal ideation

Are your symptoms caused by your wireless devices?

Common symptoms of Microwave Sickness/Electro-Sensitivity

- Brain**
 - Headaches
 - Insomnia/Sleep Problems
 - Dizziness
 - Difficulty Concentrating
 - Memory Problems
 - Brain Fog
 - Fatigue
- Ears**
 - Tinnitus
 - Humming
 - Sharp Pain
 - Noise Sensitivity
- Skin**
 - Skin Rash
 - Itching
 - Burning
 - Facial Flushing
- Mood**
 - Irritability
 - Depression
 - Anxiety
- Eye**
 - Pressure In/Behind Eyes
 - Eye Twitching
 - Deteriorating Vision
 - Vision Disturbances
 - Cataract
- Heart**
 - Palpitations
 - Arrhythmia
 - Chest Pain/Pressure
 - Difficulty Breathing
 - Low/High Blood Pressure
- Other**
 - Adrenal Problems
 - Digestive Problems
 - Weight Loss/Gain
 - Tingling
 - Dehydration
 - Hair Loss
 - Flu Like Symptoms
 - Attention/Behavioral Issues

More information at www.WeAreTheEvidence.org

JAN
Job Accommodation Network

ELECTRICAL SENSITIVITY

Accommodation and Compliance: Electrical Sensitivity

About Electrical Sensitivity

There are people who report a sensitivity to electromagnetic fields. Although it has been difficult for the environmental health and medical communities to define, individuals with electromagnetic sensitivity report various symptoms including but not limited to fatigue, weakness, disturbance, nasal mucus, and anxiety. Despite the medical community's difficulty in defining electromagnetic sensitivity, individuals with the condition may benefit from job accommodations.

Electrical Sensitivity and the Americans with Disabilities Act

The ADA does not contain a list of medical conditions that constitute disabilities. Instead, the ADA has a general definition of disability that each person must meet. A person has a disability if he or she has a physical or mental impairment that substantially limits one or more major life activities, a record of such an impairment, or is regarded as having an impairment. For more information about how to determine whether a person has a disability under the ADA, see [How to Determine Whether a Person Has a Disability under the Americans with Disabilities Act Amendments Act \(ADAAA\)](#).

On This Page

- Electrical Sensitivity and the Americans with Disabilities Act
- Accommodating Employees with Electrical Sensitivity
- JAN Publications & Articles Regarding Electrical Sensitivity
- Events Regarding Electrical Sensitivity
- Other Information Regarding Electrical Sensitivity

Microwave frequency electromagnetic fields (EMFs) produce widespread neuropsychiatric effects including depression

Martin L. Pall
Professor Emeritus of Biochemistry and Basic Medical Sciences, Washington State University 631 NE 41st Avenue, Pullman, WA 99164-2342, USA

ARTICLE INFO

Received 17 April 2015
Revised 10 June 2015
Accepted 1 August 2015
Available online 21 August 2015

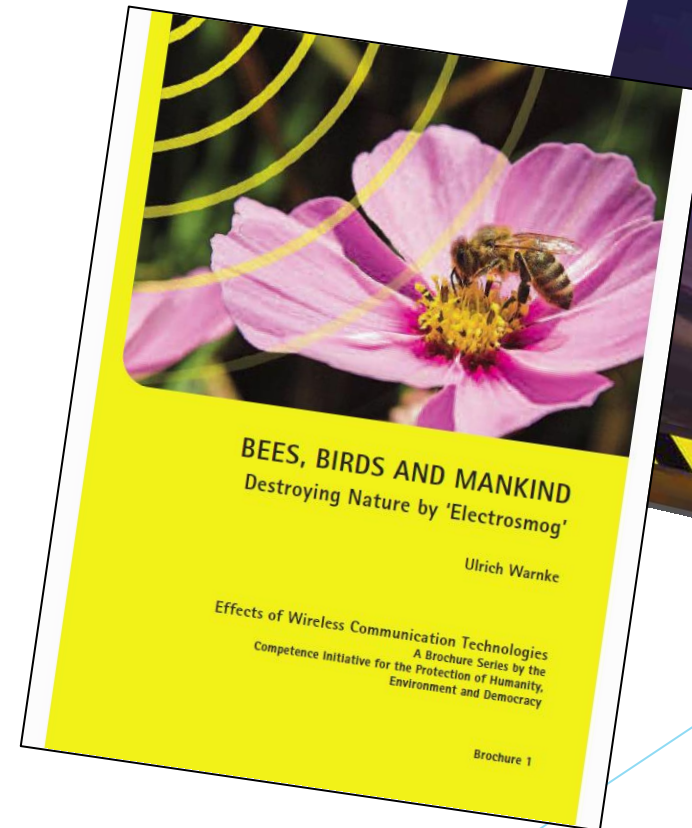
ABSTRACT

New chemical microwave/laser frequency electromagnetic fields (WEMFs) are via wireless mobile cellular phones (WEMFs) microwave/laser chemical radiation (WEMF) effects on memory, attention, and several types of additional symptoms. WEMFs are via wireless mobile cellular phones (WEMFs) effects on memory, attention, and several types of additional symptoms. WEMFs are via wireless mobile cellular phones (WEMFs) effects on memory, attention, and several types of additional symptoms. WEMFs are via wireless mobile cellular phones (WEMFs) effects on memory, attention, and several types of additional symptoms.

© 2015 The Author. Published by Elsevier B.V. This is an open access article under the CC BY license (<http://creativecommons.org/licenses/by/4.0/>).

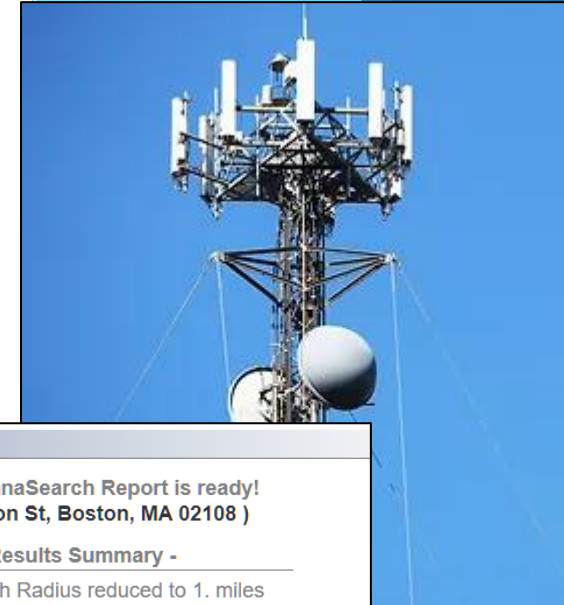
Science: Planetary Impact

- ▶ Pollinators
- ▶ Birds
- ▶ Energy consumption
 - Mineral extraction
 - Data warehouses
 - Networks
 - Personal devices
 - Streaming
 - Send/receive
 - Charging
 - Continuous app updates



Cell Towers

- ▶ Examine the non-industry funded science
- ▶ AntennaSearch.com



Understanding EMFs

Cell Towers

Cell Tower Scientific Studies

The following studies indicate cell towers are **biologically hazardous**:

- [Report of final results regarding brain and heart tumors in Sprague-Dawley rats exposed from prenatal life until natural death to mobile phone radiofrequency field representative of a 1.8 GHz GSM base station environmental emission](#) from the Ramazzini Institute in Italy concludes, "The RI findings on far field exposure to RFR are consistent with and reinforce the results of the [NTP study](#) on near field exposure, as both reported an increase in the incidence of **tumors of the brain and heart** in RFR-exposed Sprague-Dawley rats." This study, partially funded by the U. S. government, is the first large-scale study to show clear evidence of cancer risk from cell towers.
- [Epidemiological evidence for a health risk from mobile phone base stations](#) finds "**adverse neurobehavioral symptoms or cancer** in populations living **at distances < 500 meters from base stations.**" (1,640 feet)
- [Association of Exposure to Radio-Frequency Electromagnetic Field Radiation \(RF-EMFR\) Generated by Mobile Phone Base Stations with Glycated Hemoglobin \(HbA1c\) and Risk of Type 2 Diabetes Mellitus](#) indicates, "It is concluded that exposure to high RF-EMFR generated by MPBS is associated with **elevated levels of HbA1c**".

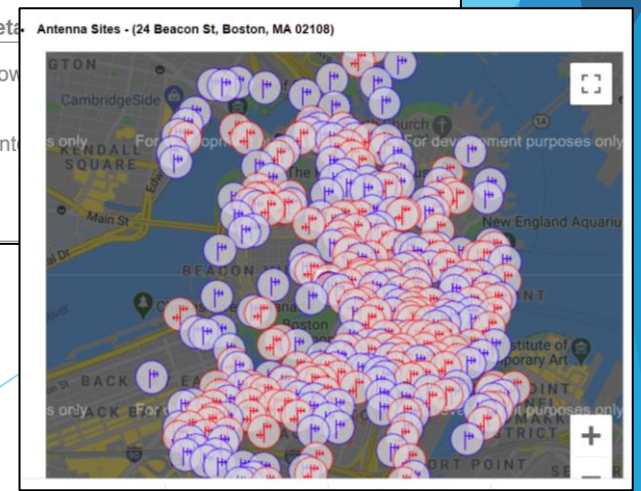
Navigation

- Introduction
- The Science
- Military Experts
- Doubts
- Cancers
- Infertility
- Impact on Children
- Wi-Fi in Schools
- Electrohypersensitiv... (EHS)
- Utility "Smart" Meters
- Cell Towers**
- 5G & IoT
- Planetary Impact
- Legal Issues
- Manufacturers
- For Health Care Providers
- For Engineers & Physicists
- For Municipal Leaders
- Media Limitations
- World Response
- Solutions
- Massachusetts EMF Bills 2019-20

Your AntennaSearch Report is ready!
(24 Beacon St, Boston, MA 02108)

- Results Summary -

- Search Radius reduced to 1. miles (High number of Antennas Detected!)
- 70 Tower** Structures Detected!
- 1 New Tower** Applications Detected as of 10/05/20!
- 1184 Antenna** Locations Found!



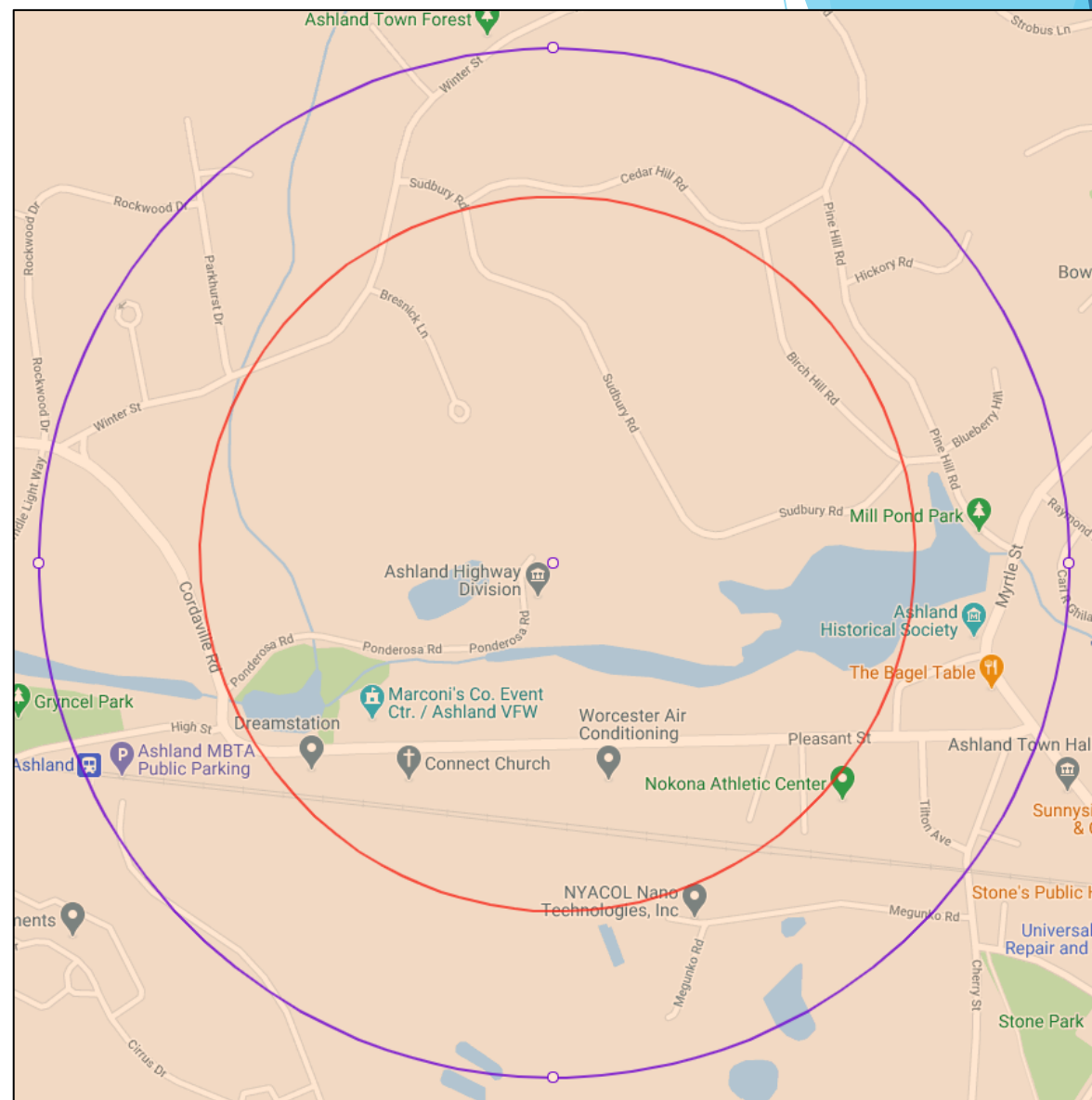
Science: Health Risks

- ▶ 500 meters/1,600 feet
- ▶ @ 135 Homes + Businesses
 - ▶ Sudbury Road
 - ▶ Birch Hill Lane
 - ▶ Bresnick Road
 - ▶ Cordaville Road
 - ▶ Ponderosa Road
 - ▶ Pleasant Street
 - ▶ Winter Street
 - ▶ Forest Avenue
 - ▶ Metcalf Avenue



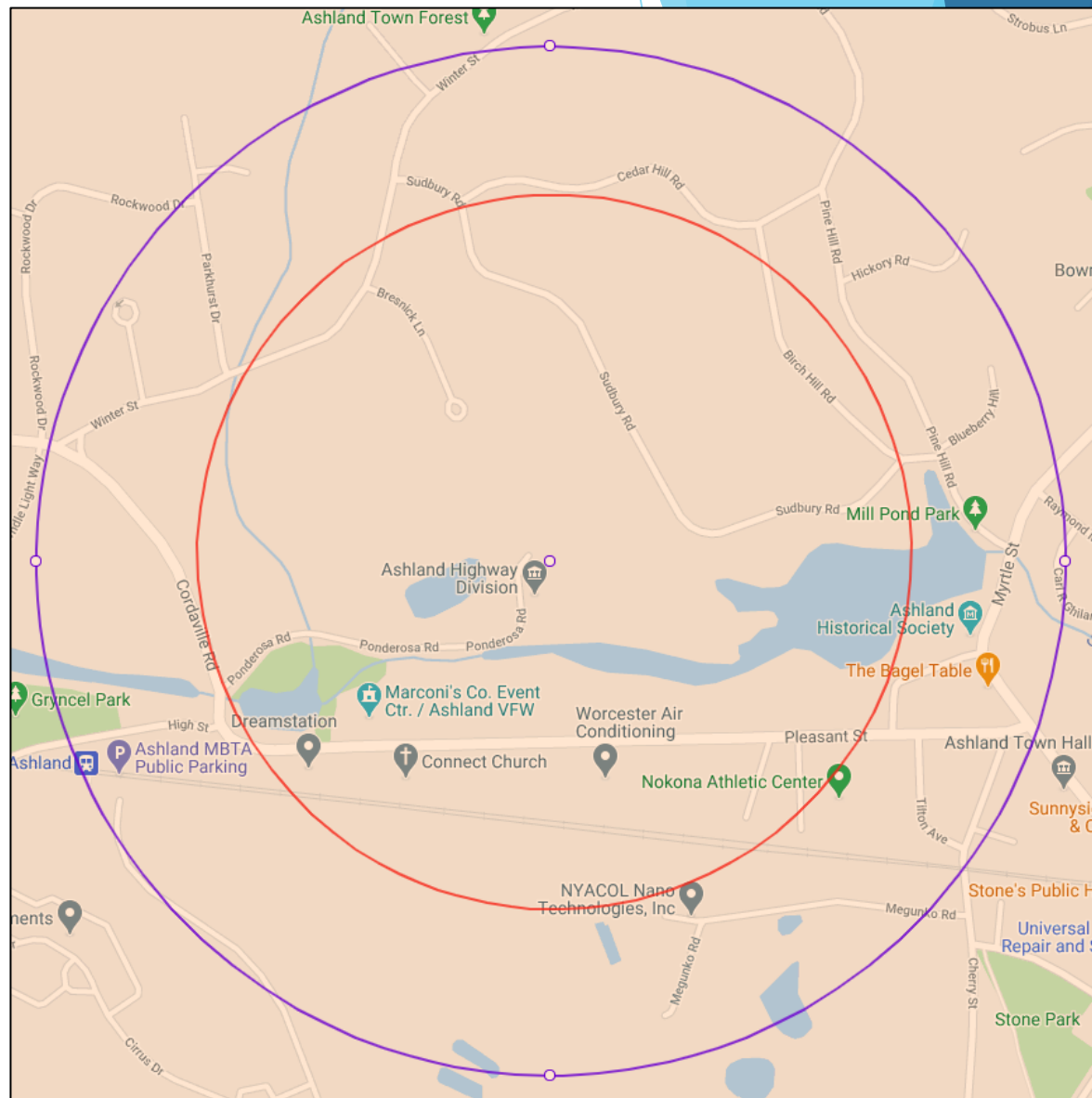
Property Values

- ▶ 720 meters/2,362 feet
- ▶ All of the preceding plus:
 - ▶ Parkhurst Drive
 - ▶ Harrington Drive
 - ▶ Shepherd Lane
 - ▶ Pine Hill Road
 - ▶ Hickory Road
 - ▶ Cedar Hill Road
 - ▶ Blueberry Hill
 - ▶ Myrtle Street
 - ▶ Water Street
 - ▶ Tilton Avenue
 - ▶ Megunko Hill
 - ▶ Raymond Marchetti Street
 - ▶ Carl R Ghilani Circle



Property Values

- ▶ 720 meters/2,362 feet
- ▶ @ 300 properties
 - ▶ Average property value: \$400K - 10% = \$40K loss in value
 - ▶ \$40K x 300 properties = **\$12,000,000 potential loss in Ashland taxable assets**



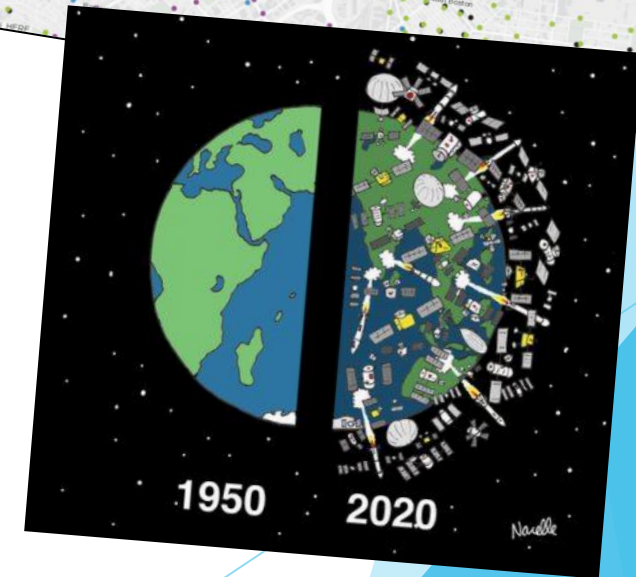
What is 5G?

- ▶ 5th Generation technology
- ▶ Promises faster entertainment downloads, smart cities, etc.
- ▶ Uses existing 3G, 4G wavelengths to penetrate buildings
- ▶ 5G is the *addition* of short millimeter waves, can't go through objects; clear-cutting trees



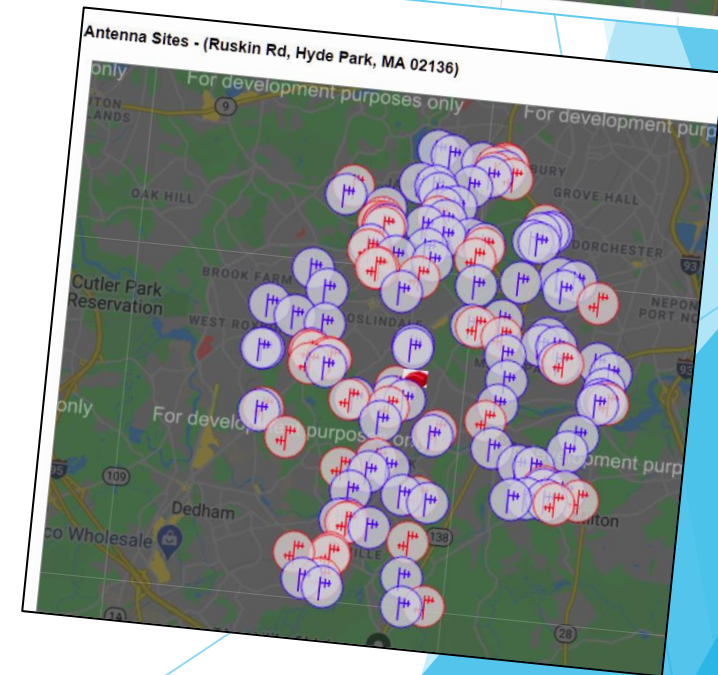
What is 5G?

- ▶ Industry goal: millions of small cells at curb outside bedrooms in public access way, every 2-12 houses; already in Boston and elsewhere
- ▶ Thousands of 5G satellites beaming radiation, polluting the sky
- ▶ Revenue streams: entertainment, data harvesting
- ▶ Industry, not consumers, driving capacity demand



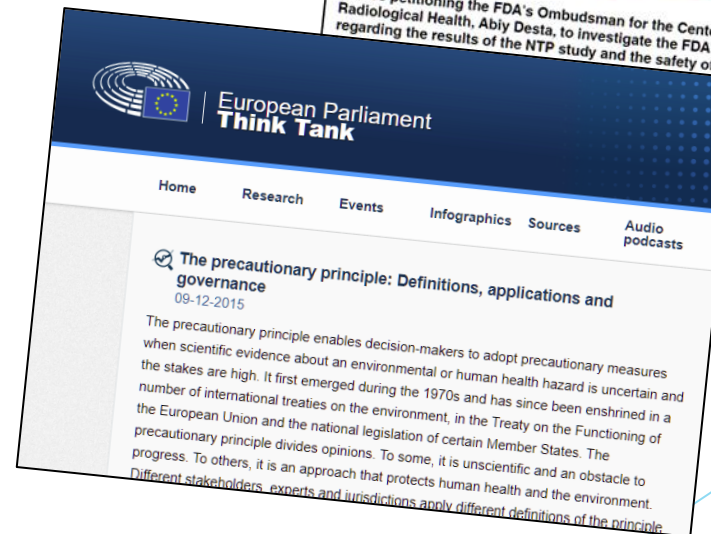
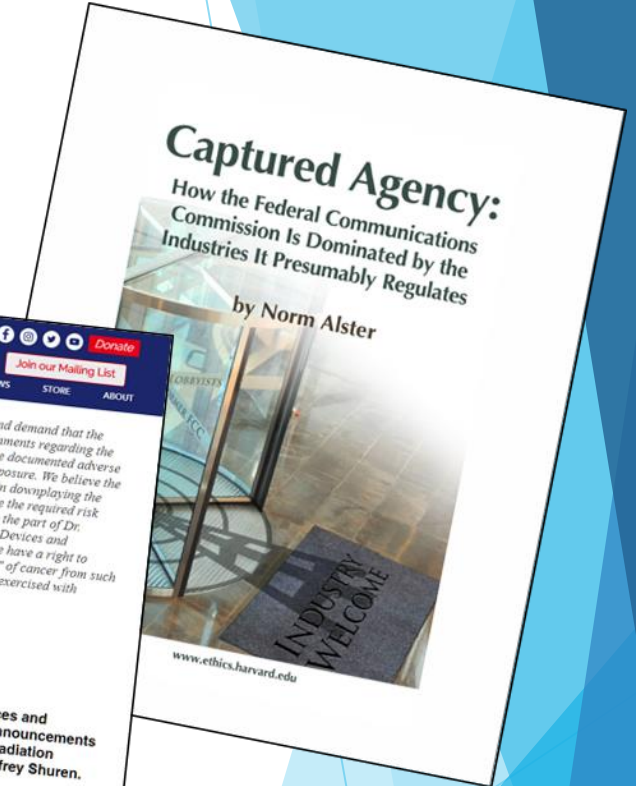
What is 5G?

- ▶ Gone from consumers to being consumed
- ▶ Boston/Hyde Park environmental justice
- ▶ Never tested for safety ([Congressional hearing](#))
- ▶ ComputerWorld: [5G a Bad Joke](#)



Why Don't We Know?

- ▶ FCC: Captured Agency
- ▶ FDA: Conflict of Interest
- ▶ Precautionary Principle



A Word of Caution: Misleading “Trustworthy” Sources

▶ New York Times

- ▶ Article, [“The 5G Health Hazard that Isn’t”](#)
- ▶ Conflict of interest: [5G Verizon lab at NYT](#)
- ▶ [Ireland: Violation of truth & accuracy code](#)

▶ World Health Organization

- ▶ [False EMF information still posted](#)
- ▶ [2020: EMF investigation reopened](#)
- ▶ [Two WHO groups: One industry-influenced, one science-based](#)



Social Norm Change

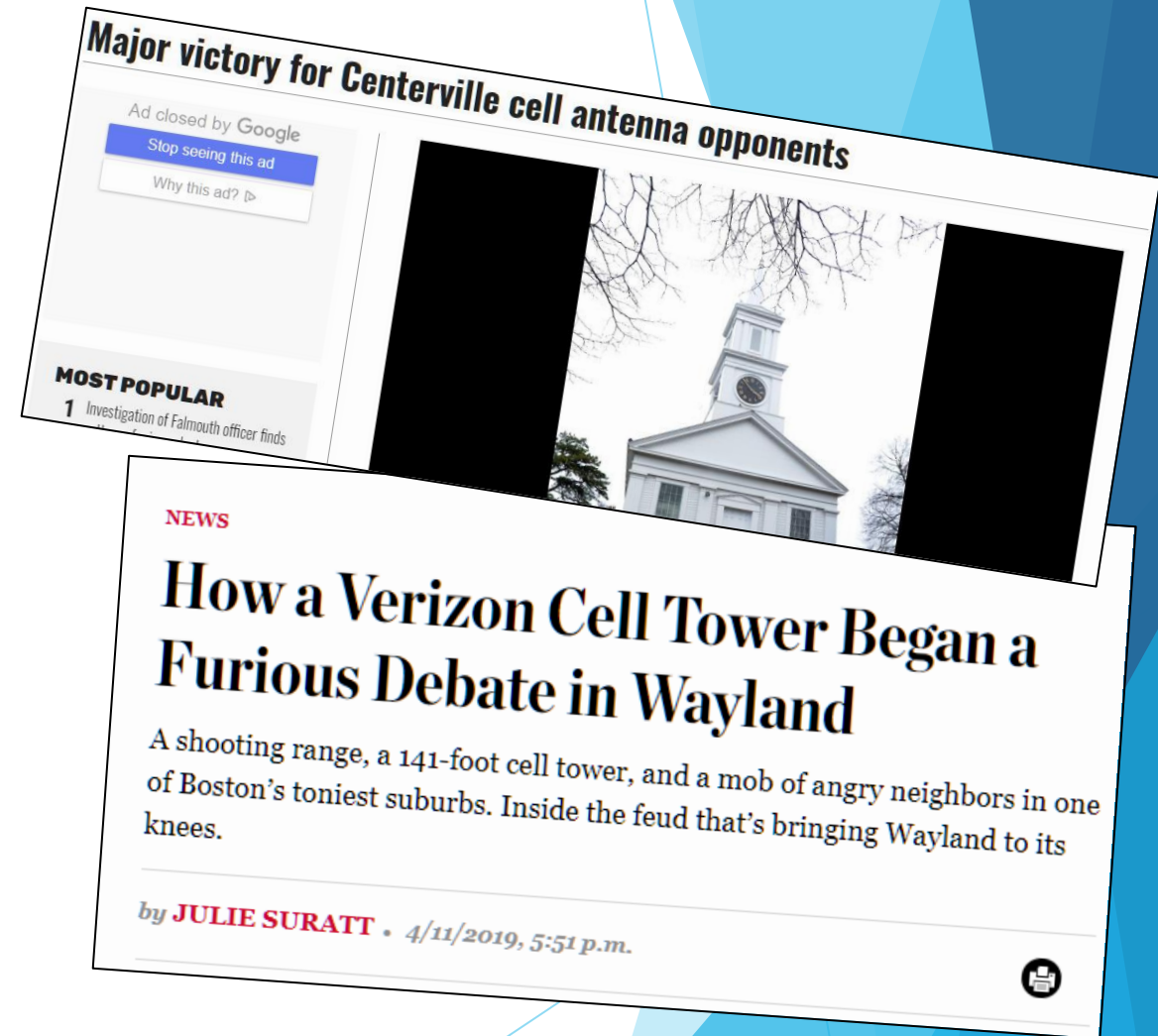
- ▶ Martin Luther King, Jr.
 - ▶ Public engages
 - ▶ Courts rule
 - ▶ Public policy enacted



Public Taking Action

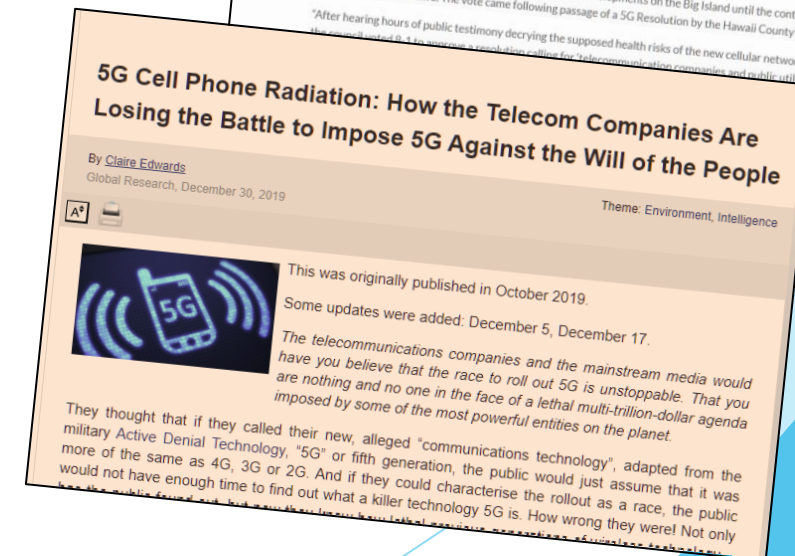
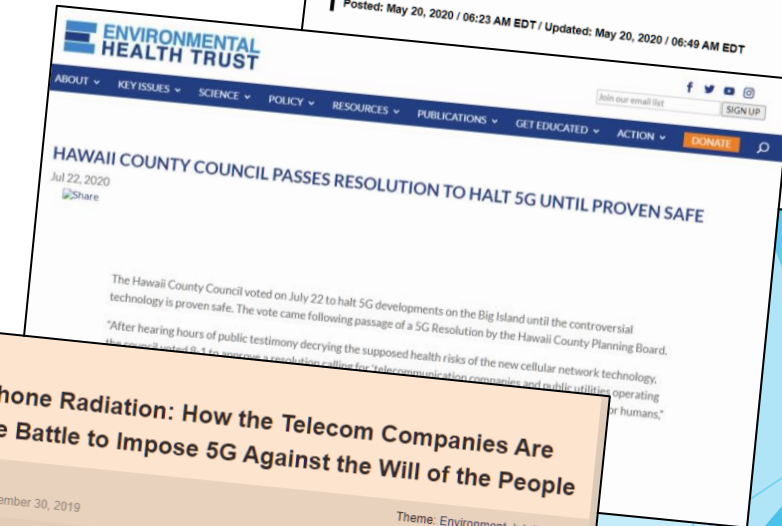
▶ Cell towers

- ▶ Shelburne, MA 1,500' setback in bylaw, 3,000' from schools
- ▶ Burlington small cell policy
- ▶ Holliston wireless antennas on power lines
- ▶ Wayland 900' setback in bylaw
- ▶ Dover-Sherborn Regional won
- ▶ Concord relocating tower
- ▶ Petersham AT&T height waiver denied



Public Servants Taking Action

- ▶ Easton, CT bans 5G
- ▶ Hawaii County bans 5G
- ▶ Bermuda temporary 5G moratorium
- ▶ Brussels & Geneva too
- ▶ Worldwide actions



Legal Solutions

- ▶ FCC being sued:
 - ▶ Ignoring the science
 - ▶ [Environmental Health Trust](#)
 - ▶ [Children's Health Defense](#)
 - ▶ CHD [OTARD Rule](#)
 - ▶ [IRREGULATORS v. FCC](#) (\$500B)
- ▶ [ADA protections Fay School](#) & [LAUSD](#)
- ▶ [ADA](#): Court recognizes non-thermal biological effects

Children's Health Defense
HISTORIC CASE CHD vs. FCC SUBMITTED!
The FCC false health guidelines are HARMING OUR CHILDREN and enabling 5G deployment
Support the Children's Health Defense and help us **STOP THE FCC!**

Children's Health Defense
CHD v. FCC – NEW CASE FILED!
Stopping the OTARD Rule, NO 5G Antennas on Homes!
Help us stop the FCC's WIRELESS WILD WEST rule and protect our rights, health and safety.
Connect us: [childrenshealthdefense.org/intard#donate](#)

United States Court of Appeals For the First Circuit
No. 18-1602
G., a 12-year-old minor suing by a fictitious name for privacy reasons; MOTHER and FATHER, suing under fictitious names to protect the identity and privacy of G., their minor child,
Plaintiffs, Appellants,
v.
THE FAY SCHOOL, by and through its board of trustees; ROBERT GUSTAVSON,
Defendants, Appellees.
APPEAL FROM THE UNITED STATES DISTRICT COURT FOR THE DISTRICT OF MASSACHUSETTS
(Hon. Timothy S. Hillman, U.S. District Judge)
Before
Howard, Chief Judge,
Lynch and Lopez, Circuit Judges.
Kam, II, with whom Markham & Read was on brief,
and Schwartz, with whom Anthony L. DeFrosopo, Jr., and FCC were on brief, for appellees.
July 17, 2019

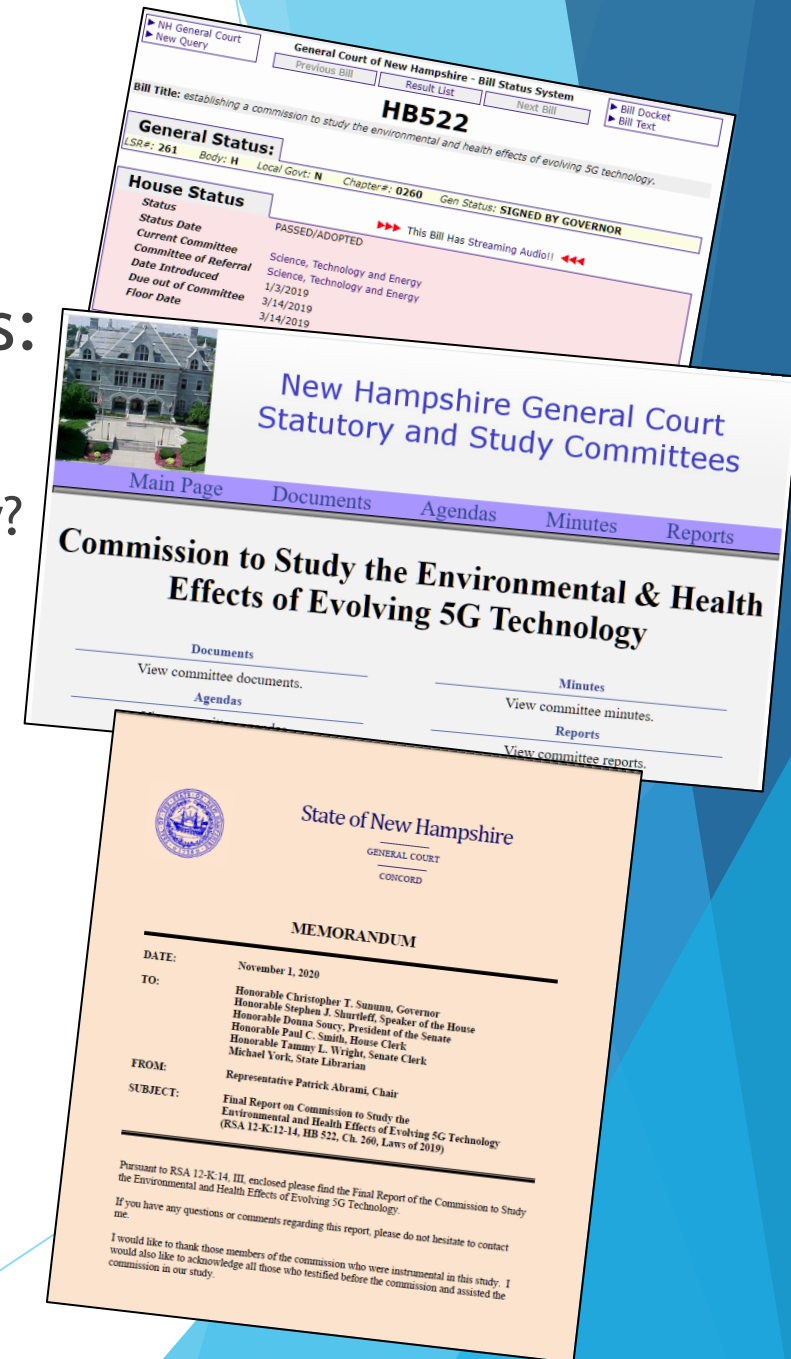
Verizon New York 2017 Financial Annual Report Excerpt: Revenues, Expenses and Profits
Corporate Operations SCANDAL
Wireless
Billions for Broadband

Item (a)	Total (b)	Nonregulated (c)	New York Local Service (d)
7 Total Operating Revenues	1,666,070,423	1,546,004,818	1,077,981,833
Operating Expenses			
Plant Specific	2,444,033,098	1,087,065,832	817,810,103
Plant Non-specific	440,183,019	55,415,744	247,758,805
Corporate Operations			
Total Operating Expenses			1,763,197,616
Net Operating Revenues			\$418,784,217

JAN
Accommodation Network
ELECTRICAL SENSITIVITY
Accommodation and Compliance: Electrical Sensitivity
About Electrical Sensitivity
Electrical Sensitivity and the Americans with Disabilities Act

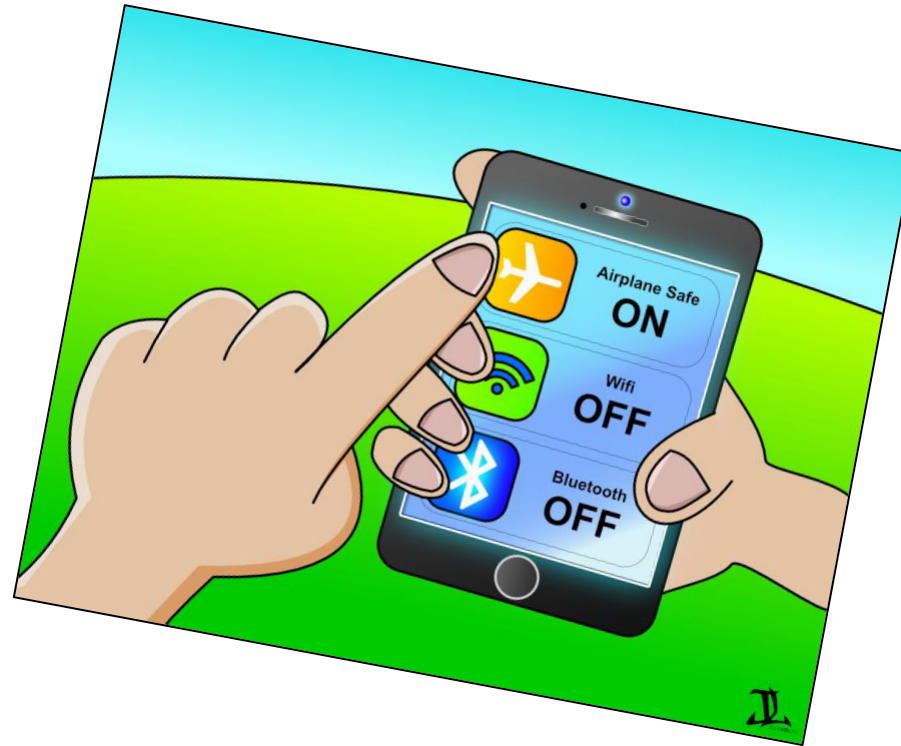
National Policy Solutions

- ▶ NH Rep. Patrick Abrami -- very pointed questions:
 - ▶ Why has the insurance industry put in RF exclusions?
 - ▶ Why does legal fine print say keep distance from the body?
 - ▶ Why are 1,000s of peer-reviewed studies ignored by FCC?
 - ▶ Why do FCC exposure limits not account for the non-thermal, non-ionizing, biological effects?
 - ▶ Why are US limits 100 times higher than other countries?
 - ▶ Why is the cumulative effect of increasing EMFs ignored?
- ▶ New Hampshire law in less than a year, groundbreaking Commission Report a year later
 - ▶ Majority Report, Minority Report: industry playbook

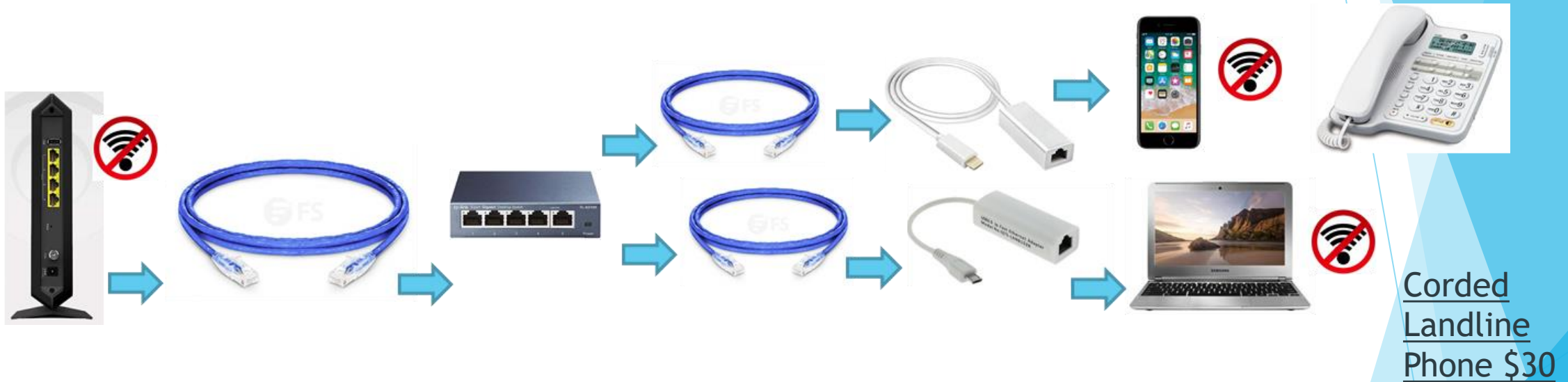


Personal Solutions: Easy & Legal

- ▶ *All devices off*
- ▶ Airplane mode
 - ▶ Cellular Off
 - ▶ Data Off
 - ▶ Wi-Fi Off
 - ▶ Bluetooth Off
 - ▶ Hotspot Off
- ▶ Second-hand radiation: people & pets



What Safe Technology Looks Like



Router

Shielded
Ethernet
Cable: Long
@ \$30

Ethernet
Switch
@ \$20

Shielded
Ethernet
Cables:
Short
@ \$4-10

Cell Phone
& Tablet
Adapters
@ \$30

Corded
Landline
Phone \$30

Professional Solutions

▶ Health Care Training

- ▶ [EMF Medical Conference](#)
- ▶ [Physicians for Safe Technology](#)

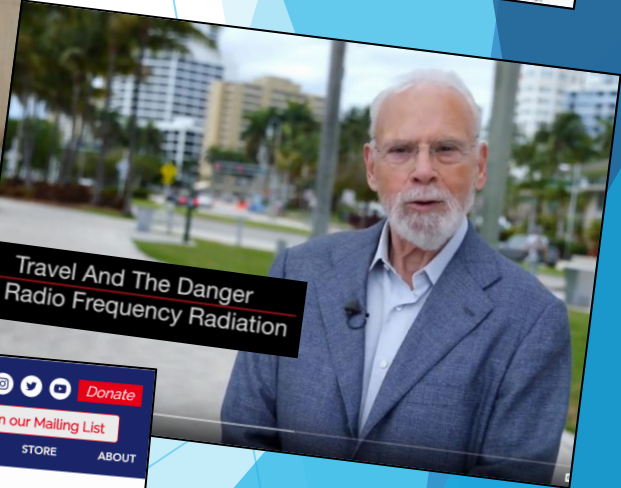
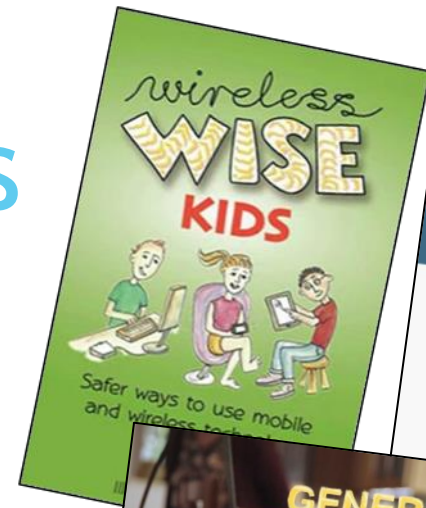


▶ Engineers, physicists, technologists, architects, etc.

- ▶ Clegg et al., [Building science and radiofrequency radiation: What makes smart and healthy buildings](#), Building and Environment, 2019
- ▶ IEEE Access: [Electromagnetic Radiation due to Cellular, Wi-Fi and Bluetooth technologies: How safe are we?](#) 2020
- ▶ Silicon Valley engineer [Jeremy Johnson TEDx Talk](#)

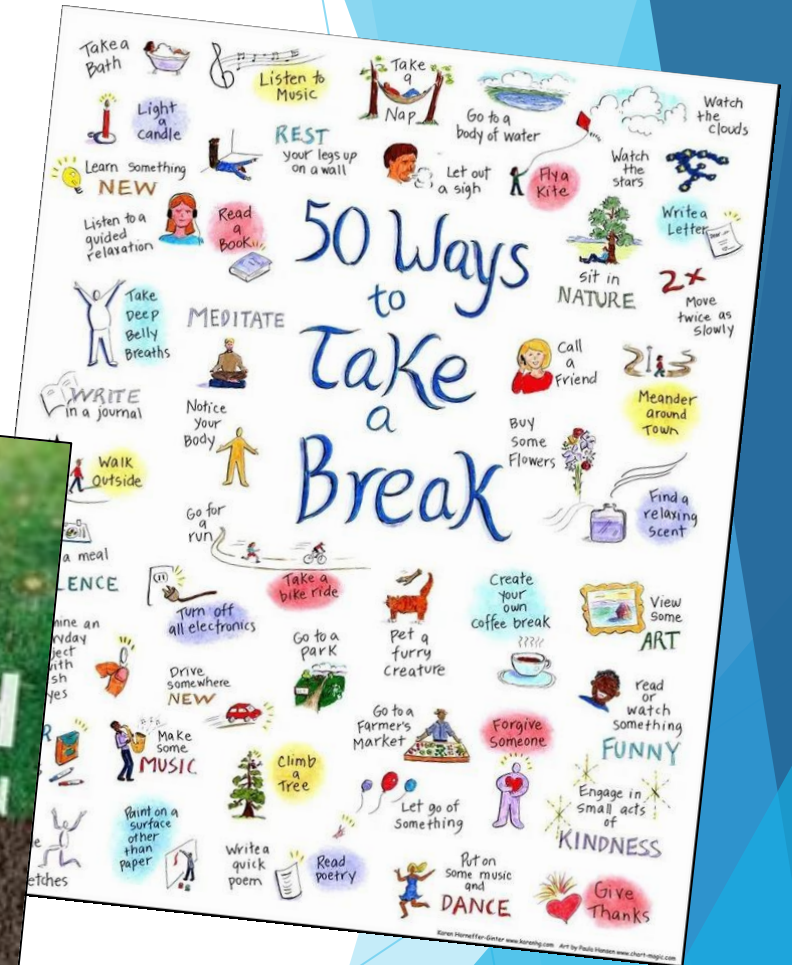
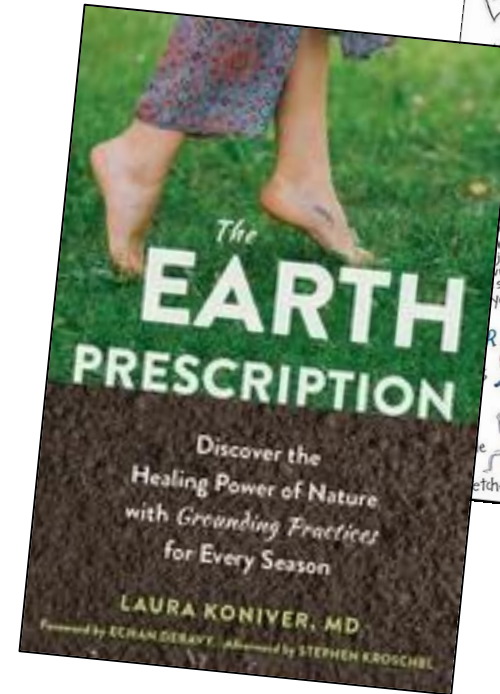
Home & Work Solutions

- ▶ [Wireless Wise Kids](#)
- ▶ Non-profit Wireless Education (@30 min. on-line)
 - ▶ [Schools & Families Course](#)
 - ▶ [Corporate Safety Course](#)
- ▶ Award-winning film [Generation Zapped](#)
- ▶ PBS Burt Wolf [1808](#) & [1809](#)
- ▶ 5GCrisis.com [Tool Kit](#)



Safe Tech Solutions: Physical & Mental Health

- ▶ Avoid excessive screen time
 - ▶ Set limits for yourself and children
 - ▶ Model good behavior
- ▶ 50 Ways to Take a Break
- ▶ The Earth Prescription



Next Steps

- ▶ Investigate:
 - ▶ Resources for [Municipal Leaders](#)
- ▶ Differentiate industry priorities vs. public's
- ▶ [ALARA](#), As Low As Reasonably Achievable (CDC)
- ▶ [Measure](#) vs. [biological effects](#)
 - ▶ [Building Biology Institute](#)

Understanding EMFs

- Navigation
- Introduction
- The Science
- Military Experts
- Doubts
- Cancers
- Infertility
- Impact on Children
- WiFi in Schools
- Electrosensitivity (ES)
- Utility "Smart" Meters
- Cell Towers
- 5G & IoT
- Planetary Impact
- Legal Issues
- Manufacturers
- For Health Care Providers
- For Engineers & Physicians
- For Municipal Leaders**
- Media Limitations
- World Response
- Solutions
- Massachusetts EMF

For Municipal Leaders

This page is designed for public servants such as selectmen, town managers, mayors, governors, state representative, senators, zoning boards, planning boards, building inspectors, public health agents, school administrators, librarians, senior center directors and others in whose hands the public has entrusted their welfare.

- For an overview of the wireless radiation issue, you are welcome to see a presentation to a **four-town board in Massachusetts**. My talk begins at 3:27. Post-note: two of the towns have since adopted the Burlington, MA Small Cell Policy (discussed further down the page):
<https://www.youtube.com/watch?v=QYxUyWPHc20>
- The following document provides **links to the resources** presented. Please feel free to share widely:
<https://docs.google.com/viewer?a=v&pid=site&srcid=ZGVmYXV0eSdGRubWVobn1mImlcnN0YXW5kaW5nZW1mc3RneDozNmEiN2Y4MjEmYjI0TjY>

The Issue: Wireless Technology is Biologically Hazardous

In 2018 the **U.S. National Toxicology Program** reported findings from a **16-year \$30M study** on wireless radiation, specifically, 2G and 3G cell phone radiation on rodents. Similar findings have been reported in **4G studies** as well. Here are

SAFE LIVING Technologies Inc. Creating Healthy Living Spaces
7 Clair Road West, P.O. Box 27051, Guelph, ON, N1L 0A6 • Tel 519.240.8735
support@slt.co • www.slt.co

RADIOFREQUENCY / MICROWAVE EXPOSURE GUIDELINES

(High Frequency Electromagnetic Waves)

1) BUILDING BIOLOGY PRECAUTIONARY GUIDELINES (SBM-2015) For Sleeping Areas

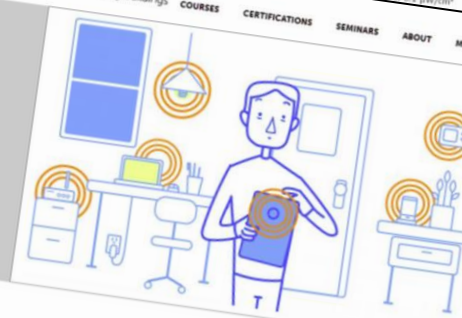
Power density	No Concern	Slight Concern	Severe Concern	Extreme Concern
microWatts per square meter $\mu\text{W}/\text{m}^2$	< 0.1	0.1 - 10	10 - 1000	> 1000
microWatts per square cm $\mu\text{W}/\text{cm}^2$	< 0.000.01	0.000.01 - 0.001	0.001 - 0.1	> 0.1
milliWatts per square meter mW/m^2	< 0.000.1	0.000.1 - 0.01	0.01 - 1	> 1
Signal strength				
Volts per meter V/m	< 0.006.14	0.006.14 - 0.061.4	0.061.4 - 0.614	> 0.614

2) BIOINITIATIVE REPORT PRECAUTIONARY GUIDELINES (2007 - 2012) www.bioinitiative.org/

Power density	No Concern	Slight Concern	Severe Concern	Extreme Concern
microWatts per square meter $\mu\text{W}/\text{m}^2$	< 0.1	0.1 - 10	10 - 1000	> 1000
microWatts per square cm $\mu\text{W}/\text{cm}^2$	< 0.000.01	0.000.01 - 0.001	0.001 - 0.1	> 0.1
milliWatts per square meter mW/m^2	< 0.000.1	0.000.1 - 0.01	0.01 - 1	> 1
Volts per meter V/m	< 0.006.14	0.006.14 - 0.061.4	0.061.4 - 0.614	> 0.614

Building Biology Institute
The science of healthy buildings

COURSES CERTIFICATIONS SEMINARS ABOUT MEMBERSHIP RESOURCES

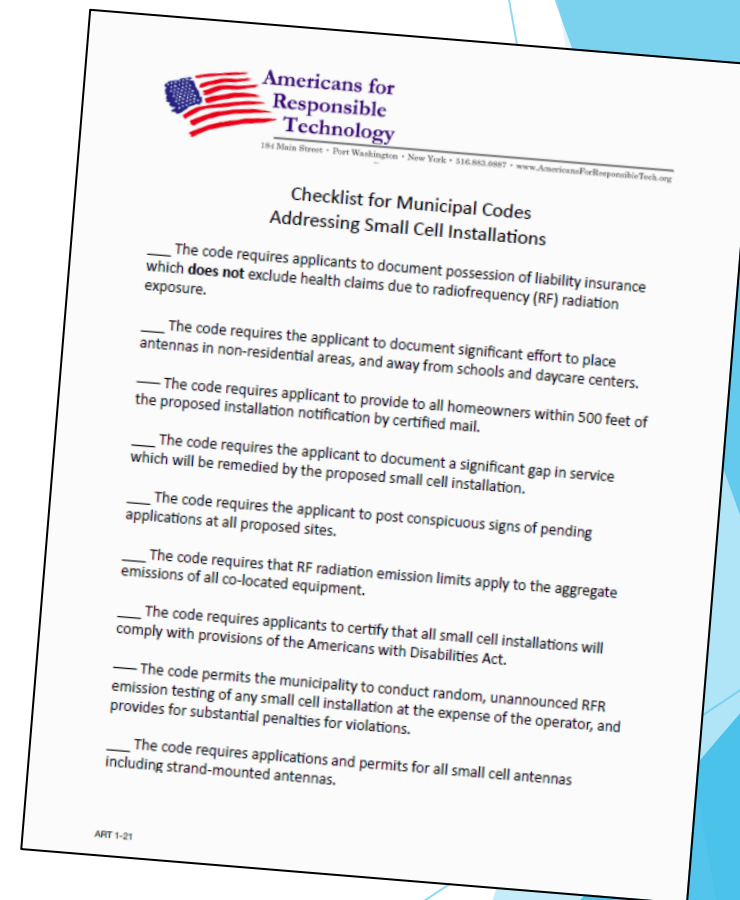


Electromagnetic Radiation Specialists
EMRS

Electromagnetic Radiation Specialists complete a rigorous training regimen which includes hands-on training in advanced electromagnetic radiation, and natural healthy building subjects. But are not BBI-certified to address indoor air quality issues (unless IAQ-certified by an authorized third party).

Next Steps

- ▶ Significant **telecom code amendments** to map antennas, monitor emissions, [5GCrisis.com tool kit](https://www.5GCrisis.com)
 - ▶ Notify public by certified mail in advance, especially EMS-disabled
 - ▶ Create low-RF safe zones
 - ▶ CityScape, Inc., to do a wireless master plan
- ▶ **Update Building Code** to comply with ADA
- ▶ EMS-safe affordable **housing & transition shelters**



Next Steps

▶ Municipality

- ▶ Refuse utility “smart” meters
- ▶ Reinventing Wires: The Future of Landlines and Networks (Schoechele)
- ▶ Legal telecom experts
- ▶ Wireless Education Corporate Course

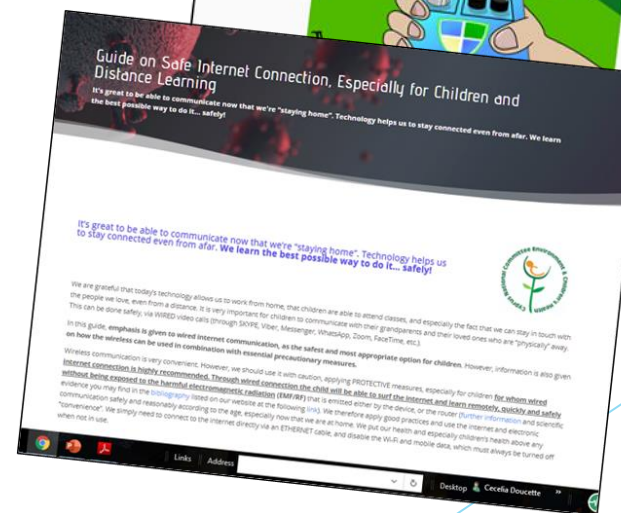
▶ EMF Medical Conference

- ▶ Public Safety: Fire & Rescue, Police
- ▶ Health Care Providers



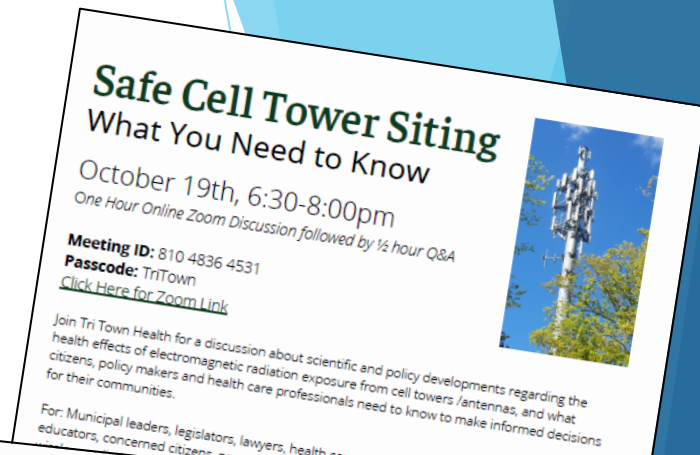
Next Steps

- ▶ Schools: Train ASAP
 - ▶ TechSafe Schools
 - ▶ Wireless Education's Schools & Families Course
 - ▶ Cyprus Guidelines



Next Steps

- ▶ Educate community
 - ▶ Sponsor [public/regional forums](#)
 - ▶ Engage professional associations (MASC, MASBO, MMA, MTA, DESE, IBEW, etc.)
- ▶ Contact [legislators](#)




Safe Cell Tower Siting
What You Need to Know

October 19th, 6:30-8:00pm
One Hour Online Zoom Discussion followed by 1/2 hour Q&A

Meeting ID: 810 4836 4531
Passcode: TriTown
[Click Here for Zoom Link](#)

Join Tri Town Health for a discussion about scientific and policy developments regarding the health effects of electromagnetic radiation exposure from cell towers /antennas, and what citizens, policy makers and health care professionals need to know to make informed decisions for their communities.

For: Municipal leaders, legislators, lawyers, health care professionals, school administrators and educators, concerned citizens, parents, neighbors and associations.



PLEASE JOIN US FOR A CRITICAL COMMUNITY CONVERSATION:
WIRELESS TECHNOLOGY RISKS & SAFER MUNICIPAL SOLUTIONS

MONDAY, MARCH 8, 11 A.M. – 1 P.M. MST
LA PLATA COUNTY EDUCATIONAL FORUM
PLEASE JOIN VIA ZOOM: [HTTPS://US02WEB.ZOOM.US/J/819094582](https://us02web.zoom.us/j/819094582)

The U.S. National Toxicology Program has found cell phone radiation causes cancer and DNA damage. Additional peer-reviewed, published studies link wireless radiation to our growing rates of insomnia, headaches, nose bleeds, nausea, pain, cognitive impairment, fatigue, behavior issues, learning disabilities, autism, anxiety, depression, suicidal ideation, neurotoxicity, digital addiction, infertility, and more. This type of radiation is constantly pulsed from our wifi devices, routers, smart utility meters, cell towers and the new close-range 4G/5G small cell antennas – unless we develop strategies to use technology safely.

Join leading experts to learn the science, risks – and safe technology solutions for La Plata:

- [Cece Doucette, MTPW Technology Safety Educator](#), introduced legislation and helped her schools become the [first in the nation](#) to safeguard students and staff
- [Timothy Schoechle, PhD, Prof. Emeritus](#) CU and CSU, telecommunications and staff [Author of Reinventing Wires: The Future of Landlines and Networks](#)
- [Sheena Symington, B.Sc., MA, Director, Electro Sensitive Society](#)
- [Virginia Farver](#), advocate and parent of son who died of brain cancer from a cell tower on school campus, petitioner with [Children's Health Defense vs. FCC lawsuit](#)
- [Coloradans and La Plata for safe Technology](#) members

In preparation we suggest you:

- Watch the award-winning film [Generation Zapped](#) (free if your library subscribes to [Scripps or Hulu](#), or download for a small fee [here](#)) and/or
- Take the quick [Schools & Families Course](#) from the non-profit Wireless Education

IF YOU ARE UNABLE TO ATTEND BUT WOULD LIKE TO JOIN ANOTHER CONVERSATION, OR PERHAPS HOST ONE OF YOUR OWN, PLEASE CONTACT CECE AT [CECE@WIRED.ORG](mailto:cece@wired.org). THANK YOU!



Jon Minn of Hilltown
regarding municipal
formation
[wired.org](mailto:info@wired.org)
info@gmail.com

Thank You!

▶ Contact:

- ▶ [Massachusetts for Safe Technology](http://MassachusettsforSafeTechnology.org)
- ▶ MA4SafeTech@gmail.com
- ▶ WirelessEducation.org

