

Openhouse
Impact Report:
2020-2021





Welcome!

Kathleen M. Sullivan, Ph.D.
Executive Director

The right experience and leadership at the right time for Openhouse:

- ◆ Ph.D. in Urban Studies and Planning with focus on housing for LGBTQ+ mid-life and older adults
- ◆ Director of Senior Services, Los Angeles LGBT Center, providing a comprehensive suite of services for LGBTQ+ older adults including healthcare, housing, and social services
- ◆ Executive Director of Generations Aging with PRIDE in Seattle, WA
- ◆ Regional Director of EngAGE NW, she was instrumental in bringing 1,100 new units of intergenerational affordable housing to the Portland metro area and rural Oregon
- ◆ Teaches two courses in Social Gerontology and Families & Aging as Adjunct Professor at Oregon Health Sciences/Portland State University School of Public Health

ON THE COVER:

Community member Jasmine G. and Openhouse staff member Joe S. share a moment at the Felicia Flames Trans Intergenerational Brunch.

📷: J Jha

📷: Saul Braumberger

...from our new Executive Director:
Dr. Kathleen Sullivan

WELCOME TO THE 2021 IMPACT REPORT. It is so empowering to read about the strength of our work and new programming like the Community Day Services Center (CDS) which opened in October of 2021. The CDS is a partnership with On Lok, the founder and leader in the Program for All-Inclusive Care for Elders (PACE). The partnership will provide support for LGBTQ+ elders so they can continue to age in community while receiving world class day services at our 75 Laguna Community Center.

I want to acknowledge that while many in our country are divided over issues like vaccinations, wearing masks, or simply agreeing on facts, Openhouse's Board of Directors, staff and volunteers are united in our commitment to centering the voices of LGBTQ+ elders and supporting our community members in overcoming the unique challenges of aging as LGBTQ+ persons.

We consistently hear from community members that our housing, direct services, and community programs make a world of difference for them, a fact recently confirmed by a new five-year study. For instance, the California Reducing Disparities Project found a significant decrease in feelings of loneliness and isolation for community members who participate in our community engagement programs such as the Friendly Visitor program even during the pandemic. This statistically significant finding clearly demonstrates the impact of Openhouse programs.

The past two years have been challenging yet filled with opportunities. Isolation, fear, and loss due to

the pandemic challenged all of us. At Openhouse, it also allowed us to create new programs like our home-delivered grocery program and online classes and support groups. The most recent innovation is our hybrid program model. With the help of technology, we can convene meetings and classes simultaneously online and in person. This will continue to grow into the new year.

Openhouse continues to evolve as an organization that puts action, not just words, in the social justice movement, particularly Black allyship. We continue to take actions in our daily work, leadership development, and policies so that we live our organizational ethos, including partnering with California Anti-Racism Alliance.

Finally, I must say that I am profoundly grateful for the opportunity to lead Openhouse. The staff is comprised of heartfelt and committed individuals who care deeply about our community and creating a space that is engaging, welcoming, and diverse. At Openhouse, our work is personal, and that caring is what makes us different.

I look forward to seeing more and more of you in person as we move to our new post-COVID-19 normal.

All my best to you and yours, and here is to healthy and joyous days to come.

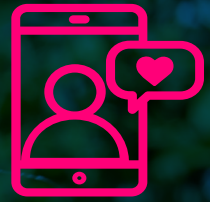
Kathleen,



“...our work
is personal,
and that
caring
is what
makes us
different.”



COMMUNITY MEMBER
KAREN R. smiles for a
photo with her Pride
Tote. 📷: Michael Kerner



5,458

phone calls to
over 470
community
members



9,000+
hours of classes
& groups for over
500 community
members



357+

food
deliveries
& errands

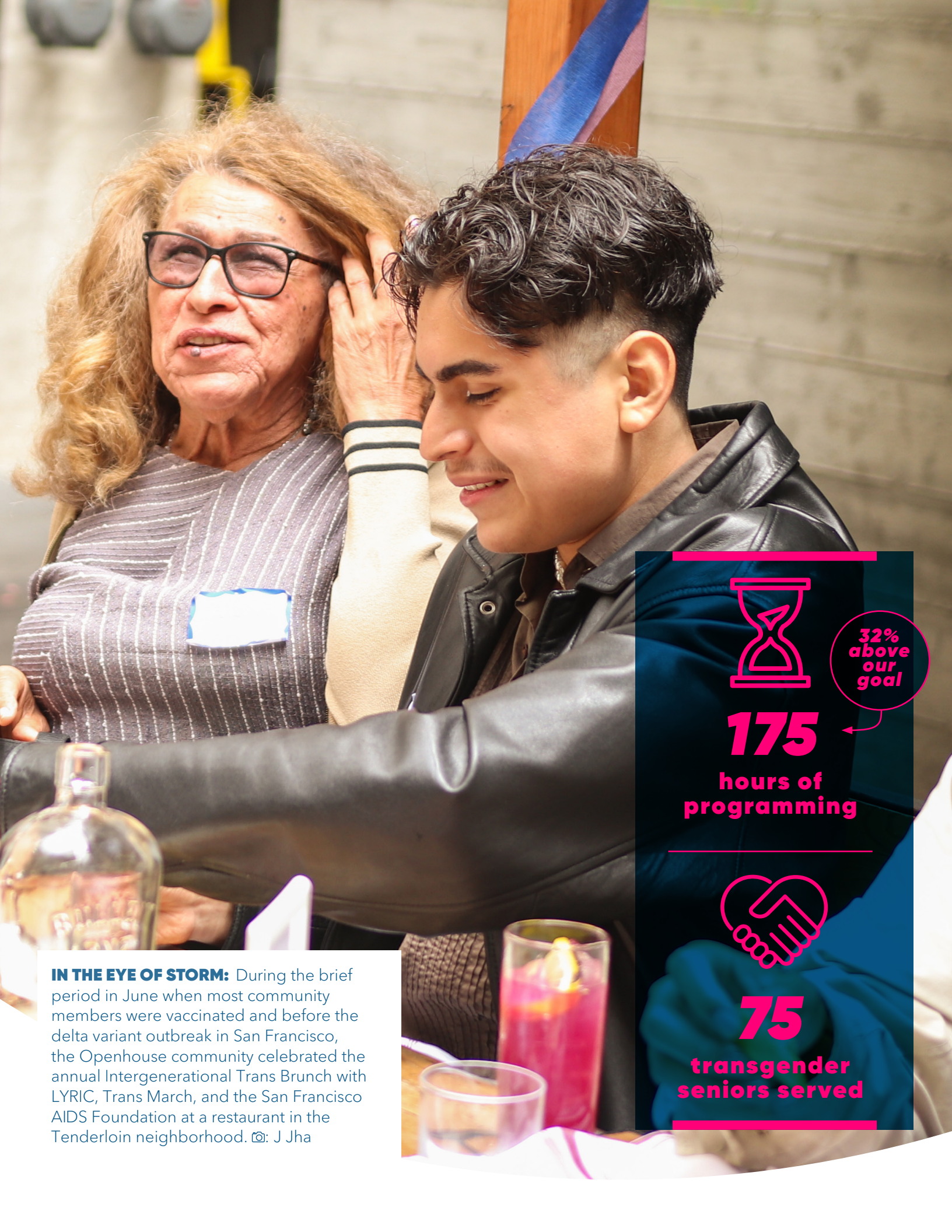
COMMUNITY TO YOU—OPENHOUSE AT THE DOORSTEP!

LGBTQ+ seniors remain at risk for COVID-19 even after vaccinations. That's why Openhouse remained shuttered for on-site programming throughout last year, and because community members could not come to Openhouse, Openhouse came to their doorsteps with deliveries of food, essential items and gift bags.

- ◆ Friendly Callers made 5,458 telephone connections with community members who requested ongoing engagement with staff and volunteers.
- ◆ 513 seniors attended more than 9,000 hours of virtual classes, workshops and emotional support groups via Zoom, or by phone.



▲ In June, Openhouse delivered love and comfort by way of 600 LGBTQ+ Pride totes, which were hand-delivered with the help of volunteers all over the Bay Area! 📍: Penn Weldon



32%
above
our
goal

175

hours of
programming



75

transgender
seniors served

IN THE EYE OF STORM: During the brief period in June when most community members were vaccinated and before the delta variant outbreak in San Francisco, the Openhouse community celebrated the annual Intergenerational Trans Brunch with LYRIC, Trans March, and the San Francisco AIDS Foundation at a restaurant in the Tenderloin neighborhood. 📷: J Jha



▲ Performers film their numbers for the Transgender Talent Showcase to celebrate San Francisco's LGBTQ+ Pride Celebration and Trans March. 📷: Penn Weldon

TRANSGENDER SENIORS ARE ESPECIALLY VULNERABLE to the health risks of social isolation and disparities in care, so we are proud to have completed the first year of the *Openhouse Transgender and Gender Non-Conforming Aging Services Program*, exceeding our outreach goal by 32% with 175 hours of programming in FY21. Transgender Services includes:

- ◆ support groups
- ◆ counseling
- ◆ classes and workshops
- ◆ food deliveries
- ◆ Intergenerational Trans Brunch
- ◆ talent shows & more



▲ San Francisco Mayor London Breed visits the Openhouse booth at the Trans March Resource Fair in June after vaccinations and before the COVID delta variant. The Intergenerational Brunch and Trans Fair gave Openhouse an opportunity to pay tribute to Felicia Flames, who passed away May 15, 2021, after a prolonged illness.

Felicia was a long-time member of Openhouse and served on the Steering Committee for Openhouse's "Living Tribute to HIV Long-Term Survivors," an art installation in the central staircase of the new community center at 75 Laguna.

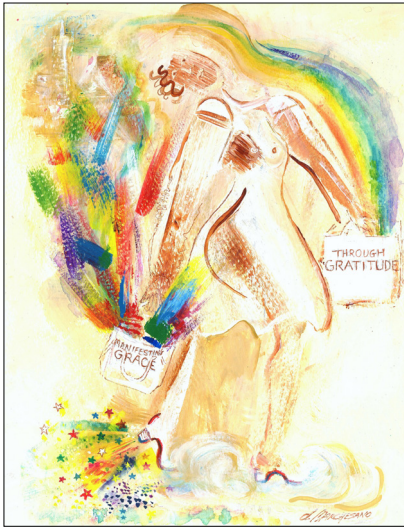
A fiercely independent voice in the transgender community, Felicia was known worldwide for her trailblazing LGBTQ+ advocacy, especially for the rights of transgender women of color. Henceforth, the annual brunch will be known as The Felicia Flames Trans Intergenerational Brunch. *Unless otherwise noted, photos courtesy of Openhouse.*



KEN AND STEVE were all too happy to welcome the volunteers that delivered their Pride totes in June. And pose for a photo! We got to see a different side of our community members during the COVID pandemic making deliveries and through our Community to You Program. @: Michael Kerner



600
LGBTQ+
Pride totes
hand delivered



▲ *Low Spark of High Heels*

“The Girl seemed to magically appear on the page and the rest of the piece just popped out and here it sits It truly represents the pride I feel inside being a part of the community for over thirty years and my love of the SF LGBT community.” – Donna Marchesano; one of four winners of the Openhouse “Pride Inside” poster contest. ▼

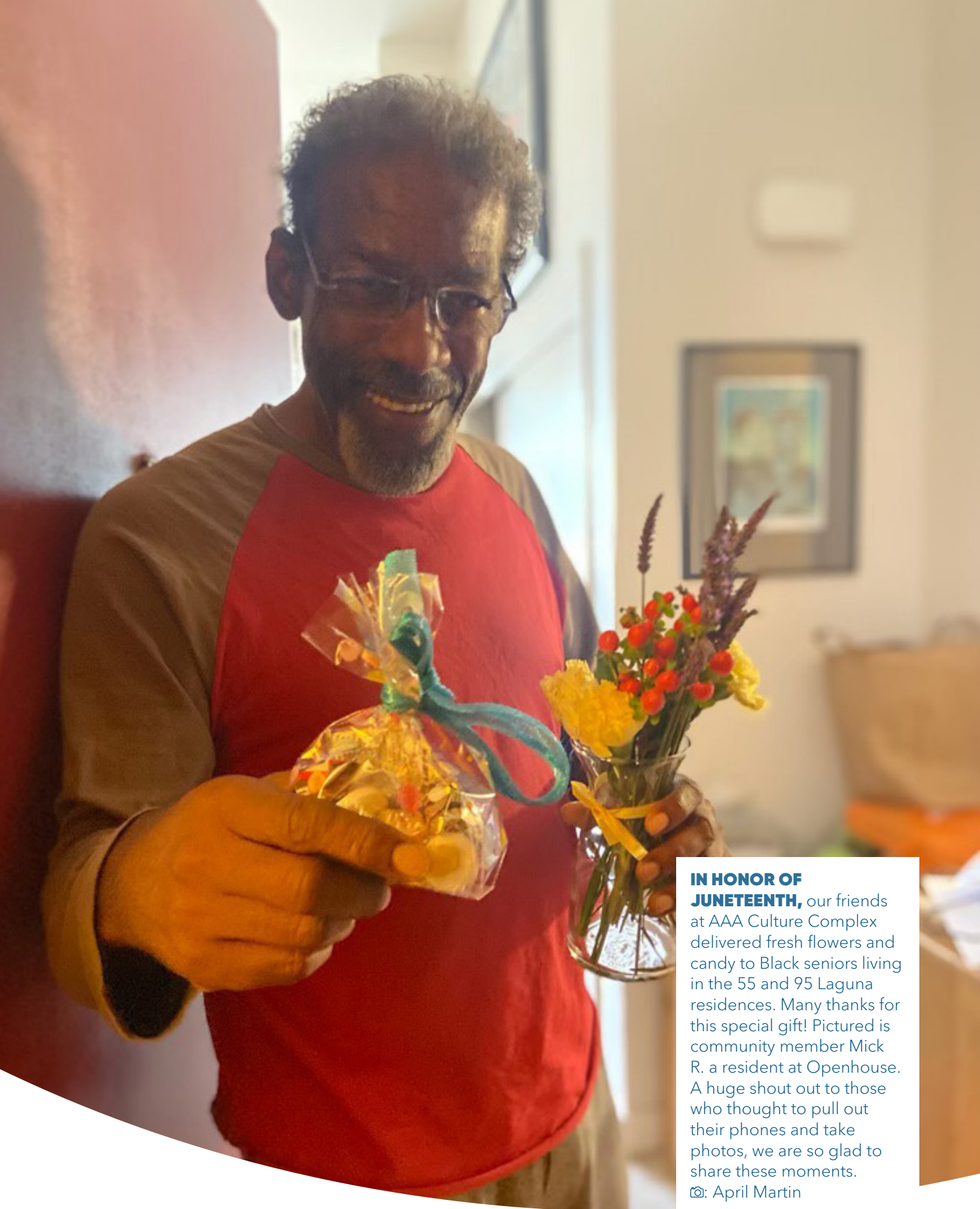


WITH A COMMUNITY OF OVER 3,000 MEMBERS, we at Openhouse continue to find creative ways to celebrate Pride Month. The San Francisco Pride Parade, a centerpiece to our activities, was canceled again this year due to the pandemic and official events were limited. Whether in person or virtually, we continue to march together to further the ambitious mission of Openhouse.

- ◆ With the help of generous donors and dedicated volunteers, we were able to hand deliver **600 Pride totes** that included a personalized message of support along with goodies and sundries.
- ◆ Community members produced two variety shows during Pride month. The **Out Loud and Proud Virtual Variety Show** was broadcast in June of 2021.
- ◆ A second variety show was produced as part of the virtual Trans March event, held on Pride weekend.
- ◆ Openhouse held a “Pride Inside” poster contest. Community members submitted artworks to be displayed as part of the Haight Street Art Center (HSAC) exhibit. Haight Street Art Center hosted six Openhouse artists for a private tour of their LGBTQ+ Pride exhibit: Queer Visions. Thanks to HSAC Executive Director, and former Openhouse staffer, Kelly Harris for having us as part of the exhibition.



▲ Left: (L to R) Artists Keith Baillie, Kered, EDDE, Lourdes Pollard, Donna Marchesano, and Kim Ringle pose with HSAC Executive Director Kelly Harris and Openhouse Case Manager Aiden Goodwin



IN HONOR OF JUNETEENTH, our friends at AAA Culture Complex delivered fresh flowers and candy to Black seniors living in the 55 and 95 Laguna residences. Many thanks for this special gift! Pictured is community member Mick R. a resident at Openhouse. A huge shout out to those who thought to pull out their phones and take photos, we are so glad to share these moments. @: April Martin

“San Francisco’s LGBTQ+ elders led a revolution for civil rights in this city and country. Having the opportunity to work with the community is the highest honor I can imagine....

Carrying on the work, with a focus on serving those in our community who are most vulnerable due to institutional racism, transphobia and discrimination and looking for new ways to further serve LGBTQ+ older adults is an opportunity I am very grateful to have. I look forward to learning from them and marching forward together, as we further the ambitious mission of Openhouse.”

– Dr. Kathleen Sullivan

FIGHTING A COVID PANDEMIC AND SOCIAL INJUSTICE against African-Americans, transgender seniors and Asian Americans, Openhouse remains dedicated to expanding our Diversity, Equity and Inclusion (DEI) footprint in San Francisco.

- ◆ Recently, we led a community response to the Third Circuit California Appeals Court decision to allow for mis-gendering and dead naming of transgender seniors in nursing facilities.
- ◆ We also co-presented two public forums with broadcaster Michelle Meow and The Commonwealth Club to address this court ruling, as well as issues facing the Queer and Transgender Asian Pacific Islander (QTAPI) community.



- ◆ Openhouse continues to partner with the Racial Equity Institute and the Kahakulei Institute in training board and staff members in racial justice and DEI community building with the goals of achieving a more diverse staff, programming that is conscious to include diverse elders, and a willingness to think and do differently so we are more inclusive now and forever.

THE OPENHOUSE PROGRAMS Department made some significant organizational changes in FY 21, advancing three program managers to directors of Community Engagement Programs, Community Support Services, and Strategic Partnerships & Training.

COMMUNITY SUPPORT SERVICES

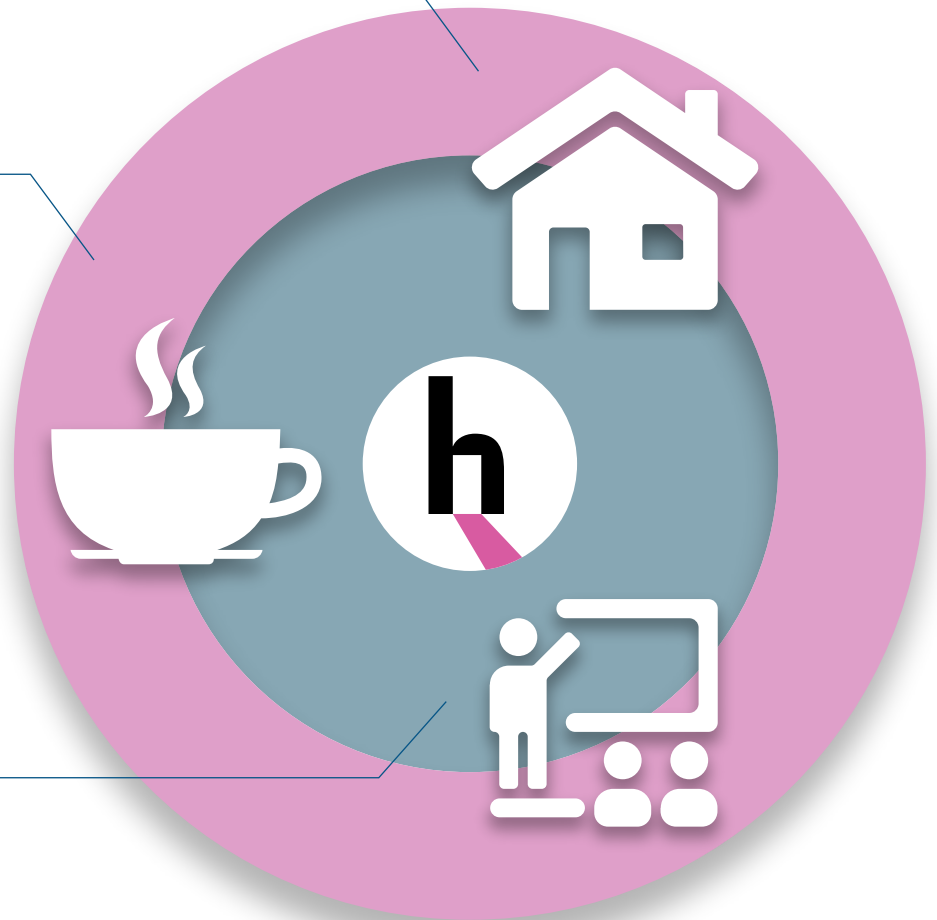
- ◆ Housing Navigation Services
- ◆ Adults with Disabilities Resource Center
- ◆ DAS Case Management
- ◆ Residents Case Management
- ◆ Care Navigation

COMMUNITY ENGAGEMENT PROGRAMS

- ◆ Community to You special event deliveries (during COVID-19)
- ◆ Friendly Caller/Visitor Program
- ◆ Volunteer Engagement program
- ◆ Intergenerational Programs
- ◆ Virtual Lifelong Learning Classes and Emotional Support Groups
- ◆ Transgender & Gender Non-Conforming Services
- ◆ Home Delivered Grocery Program

STRATEGIC PARTNERSHIPS & TRAINING

- ◆ Openhouse + On Lok Community Day Services
- ◆ Alzheimer's Association
- ◆ SAGE (Advocacy & Services for LGBT Elders)
- ◆ Fee-for-Service Training to government agencies, corporations and community organizations



OPENHOUSE COMMUNITY MEMBER DEMOGRAPHICS*

Age (this is the first time we've reported age)

Under 50	5%
50 - 65	25%
66 - 85	68%
86 - 96	2%

Race/Ethnicity

African American/Black.....	12%
Asian/Pacific Islander.....	7%
Caucasian/White.....	65.2%
Hispanic/Latinx.....	9.1%
Middle Eastern.....	.1%
Multi-Racial	3.3%
Native American/Indigenous...	2%
Other	1.3%

Sexual Orientation

Asexual6%
Bisexual	10.8%
Gay/Male.....	50.3%
Heterosexual	17.7%
Lesbian/Female	16.7%
Other	3.3%
Queer3%
Pansexual.....	.3%

Gender

Female.....	36.9%
Genderqueer	1.9%
Male	59.4%
Trans Female.....	1.7%
Trans Male1%

* Self-reported by community members.



OPENHOUSE AND MERCY

TAPPED: The San Francisco Mayor’s Office of Housing and Community Development, with support from District 8 Supervisor Rafael Mandelman, selected Openhouse and Mercy Housing as co-developers of a third LGBTQ-welcoming affordable senior housing building. Announcing the project on May 25, 2021, the City acquired a triangular 7,840 square foot lot at 1939 Market Street, just steps away from the Openhouse campus at 55-95 Laguna Street.

In a statement to the *Bay Area Reporter*, Mayor London Breed said, “We need more afford-able housing across our entire city, including the Upper Market neighborhood. 1939 Market will build on the success we’ve had developing senior housing at 55 and 95 Laguna to bring more homes for those in need and I’m excited to

keep pushing this project forward.” Supervisor Mandelman told the *BAR* in May that the project has been one of his top priorities over the last 18 months, so it is “an exciting

“1939 Market will build on the success we’ve had developing senior housing at 55 and 95 Laguna to bring more homes for those in need...”
— Mayor London Breed

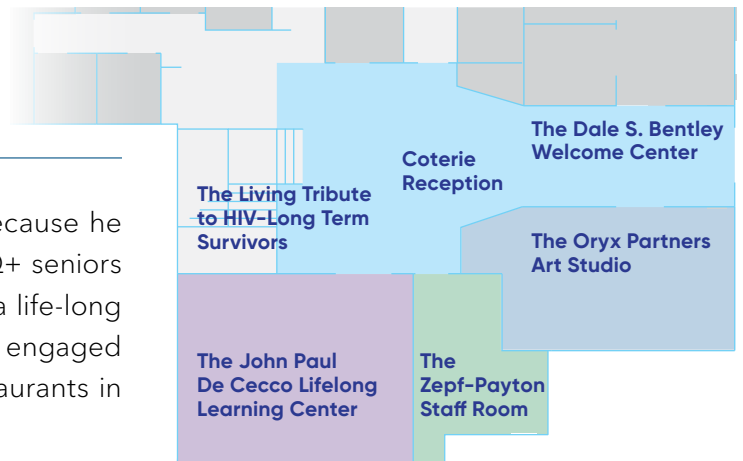
milestone to have the development team selected ahead of Pride Month.” “Mercy Housing and Openhouse have the right experience building LGBTQ-welcoming affordable senior housing at 55 and 95 Laguna to get this next

phase done,” stated Mandelman. “With this building, they will have hopefully brought 250 LGBTQ-affirming affordable senior units to a neighborhood from which far too many queer seniors have been displaced. The need for this type of housing is vast, but these buildings are a solid start.”

(Excerpted from an article in the May 25, 2021, issue of the Bay Area Reporter.)

OPENHOUSE COMMUNITY CENTER

FIRST FLOOR



The Dale S. Bentley Welcome Center

Dale S. Bentley left his entire estate to Openhouse, because he understood the unique challenges of aging among LGBTQ+ seniors and wanted to do something about it. Mr. Bentley was in a life-long partnership with C. Emerson Propps and William Andrews, engaged in the purchase and operation of hotels, motels, and restaurants in California and Nevada.

Coterie Reception

Two national developers, Related and Atria Senior Living, have joined together to form Coterie, a senior housing development company whose first two offerings will be in San Francisco and New York. In San Francisco the company is building Coterie Cathedral Hill, a 208-unit apartment complex at 1001 Van Ness Ave., which will open in March of 2022. A second development, in Manhattan's Hudson Yards, is slated to open late next year. Coterie and Openhouse are currently in discussions for further partnering opportunities.

The Zepf-Payton Staff Room

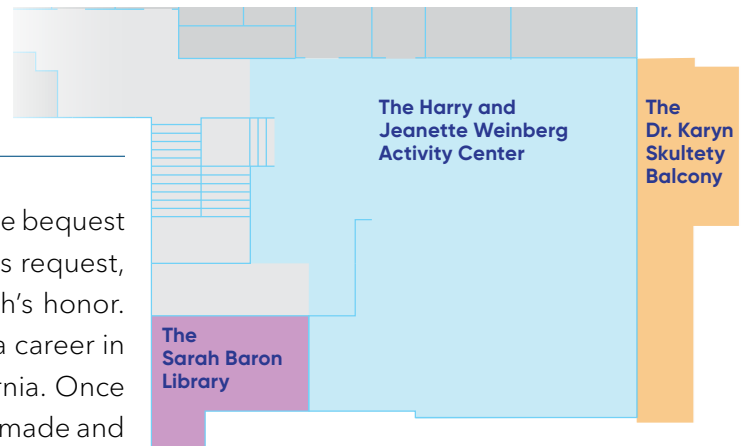
Openhouse contributors Roland Zepf and Ted Payton dedicated their expansion gift to UCSF 360: Positive Care Center & Women's HIV Program. Dr. Zepf is an Assistant Clinical Professor at the School of Nursing and the 360 Positive Care Center & Women's Program, University of California San Francisco. UCSF created the 360 Center in 1984 to offer a range of high quality services in a single location for people living with HIV/AIDS. Mr. Payton, Dr. Zepf's husband, is retired. Both continue to support Openhouse in a major way, and Openhouse hopes to partner further with Dr. Zepf and the 360 Positive Care Center & Women's HIV Program, to expand services to HIV long-term survivors at Openhouse.

The John Paul De Cecco Lifelong Learning Center

John Paul De Cecco, Ph.D., was a widely respected pioneer in LGBTQ+ studies and a longtime professor of psychology and sexuality at San Francisco State University. While at SFSU, Dr. De Cecco founded the Center for Education and Research in Sexuality Studies, and edited its *Journal of Homosexuality* for over three decades. Dr. De Cecco founded the sexuality studies program at SFSU in the late 1970s, and his classes still are remembered as the most popular on campus.

WHAT'S IN A NAME? Names are everything at our new Openhouse Community Center! They represent those organizations and individuals who helped build 75 Laguna with major expansion grants, including *The Oryx Partners Art Studio*, *The Living Tribute to HIV-Long Term Survivors* (sponsored by Gilead Sciences, Inc.), and *The Dr. Karyn Skultety Balcony* (funded by donors and friends) featured elsewhere in this report. We list and honor the other benefactors on these pages. Thank you!

SECOND FLOOR



The Sarah Baron Library

Sarah Baron was the mother of Harold Baron, who left a large bequest to Openhouse in 2002 when he died at the age of 89. At his request, Openhouse committed to naming its future library in Sarah's honor. Harold, a writer, world traveler and cultural *bon vivant*, had a career in publishing in New York, but retired in Marin County, California. Once at home alone in New York City, Marlene Dietrich personally made and brought him a bowl of chicken soup. He was court martialed by the U.S. Navy in the 1940s because he would not inform on other men for being homosexual, serving a year's sentence for falling in love with another sailor. Ironically, Harold decided to come out only at the very end of his life. "I regret that I haven't been more supportive of the gay community," he told Openhouse. "I want to make up for that now."

The Harry and Jeanette Weinberg Activity Center

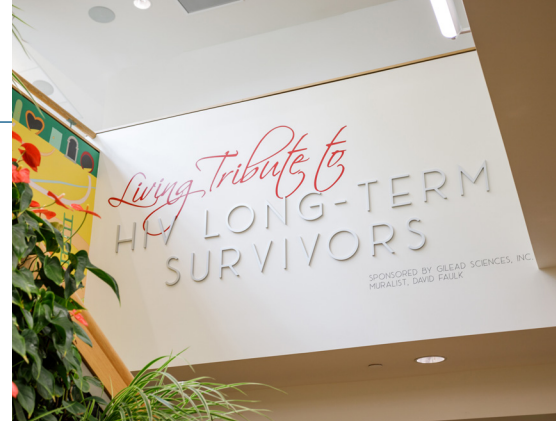
The Harry and Jeanette Weinberg Foundation, one of the largest private charitable foundations in the United States, is dedicated to meeting the basic needs of people experiencing poverty. The Foundation provides approximately \$130 million each year in total grant activity supporting nonprofits that provide direct services in the areas of Housing, Health, Jobs, Education, and Community Services. Grants support organizations that serve a range of populations, including older adults, women at risk and their children, people with disabilities, and veterans, as well as the Jewish community.

Thanks to all for turning the Openhouse dream of a community for LGBTQ+ seniors into a reality. San Francisco is a better place because of your generosity and we remember you every time we walk through the center.

OPENHOUSE COMMUNITY CENTER

The Living Tribute to HIV-Long Term Survivors

Approximately 30% of Openhouse Community members are living with HIV. Celebrating their strength and resilience, we're proud to unveil the two-story mural flanked by living walls of evergreen plants that greet visitors at the new Openhouse Community Center. Titled *The Scenic Route*, by muralist David Faulk, the artwork on the central staircase creates a playful visual map that examines and celebrates the different paths and experiences of long-term survivors. Special thanks to those who served on the Steering Committee, our Art Advisors, Habitat Horticulture, and David Faulk. This tribute is made possible by a grant from Gilead Sciences, Inc.



The Oryx Partners Art Studio

The Oryx Partners Art Studio in our new Openhouse Community Center has served us well as a staging area for all kinds of “Community to You” events including holiday and Pride deliveries, and most recently a door decorating activity (right) where volunteers prepared for residents to decorate their apartment doors for the holiday season.

Oryx Partners, founded by Juan-Carlos (“JC”) Wallace and John Ramsbacher in 2014, is a San Francisco-based real estate company active in senior housing, assisted living, and multi-family residential projects. JC and John believe deeply in giving back to the San Francisco Community and are active supporters of Openhouse. JC joined the Openhouse Board of Directors in 2019, and currently serves as its Co-Chair.



The Dr. Karyn Skultety Balcony

A Fond Farewell: Major donors and friends of Openhouse helped us reach our \$100,000 goal for naming the balcony of the new Openhouse Community Center in honor of outgoing Executive Director Dr. Karyn Skultety. Many community members, donors, board members, staff and dignitaries came to wish Karyn a fond farewell and step out on the balcony now named in recognition of her achievements and leadership during her four years at Openhouse.



BOARD OF DIRECTORS & STAFF

DURING THE FIRST FULL YEAR

of COVID-19, Openhouse grew its programming and staff in response to the needs of LGBTQ+ seniors facing month after month of social isolation. In FY21, we added a Food Service Coordinator, two Assistants for the California Reducing Disparities Project, two transgender and gender non-conforming liaisons, and a care navigator. In early FY22, an HR Generalist, Executive Assistant, community center Receptionist, and an Operations Coordinator joined the staff.

BOARD OF DIRECTORS

Maité Echaniz (she/her)
Co-President

Juan-Carlos Wallace (he/him)
Co-President

Joaquín Castillo-Arana (he/him)
Secretary

Bill Lowell (he/him)
Treasurer

Chris Davidson (he/him)

Paul Donaher (he/him)

Vinny Eng* (he/him)

Diana Feliz Oliva (she/her)

Randi Gerson (she/her)

Nanette Lee Miller (she/her)

Jenna Rapues (she/her)

Morey Riordan (he/him)

Tim Sweeney (he/him)

Ana Zamora (she/her)

Susan Zieff (she/her)

**New to the board in FY22*

EXECUTIVE STAFF

Kathleen Sullivan, Ph.D. (she/her)
Executive Director

Matthew Cimino (he/him)
Director of Finance & Operations

Sylvia Vargas (she/her)
Director of Community Engagement Programs

Carrie Schell (she/her)
Director of Community Support Services

Ephraim Getahun (he/him)
Director of Strategic Partnerships

STAFF

Colette Bryan (she/her)

Joshua Cohen (he/him)

Elisabeth Copp (she/her)

Faire Faircloth (he/him)

Zeph Fishlyn (they/them)

Aiden Goodwin (they/them)

Sage Hapke (she/her)

Charity Horst (she/her)

J Jha (all pronouns)

Dottie Luxenburg (she/her)

Alex Martinez (he/him)

Ariel Mellinger (she/her)

Fermín Muro (he/him)

Kevin O'Neal (he/him)

Adrienne Pankonin-Dahl (she/her)

Armando Paone (he/him)

Aisling Peterson (she/ella)

Jeff Racca (he/him)

Charles Renfroe (he/him)

Jose Santamaria (he/him)

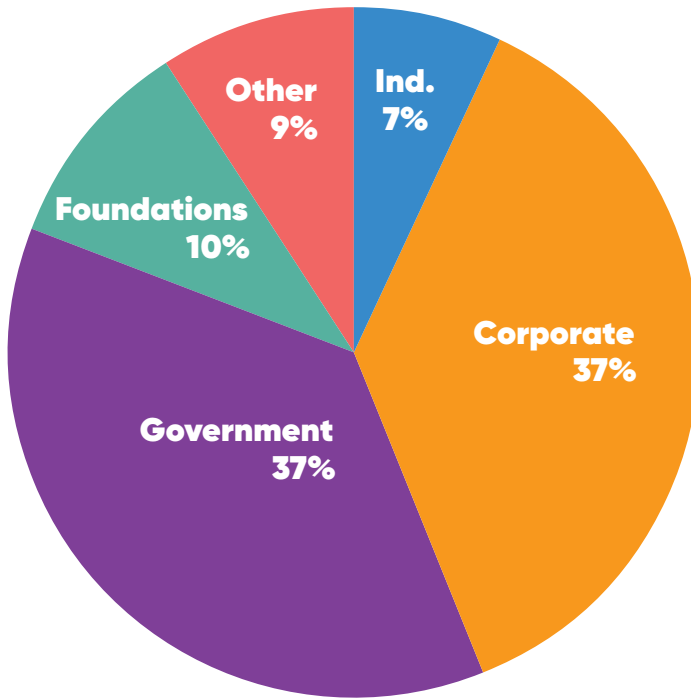
Joe Supan (he/him)

Penn Weldon (she/her)

Azeen ZiaEbrahimi (she/they)

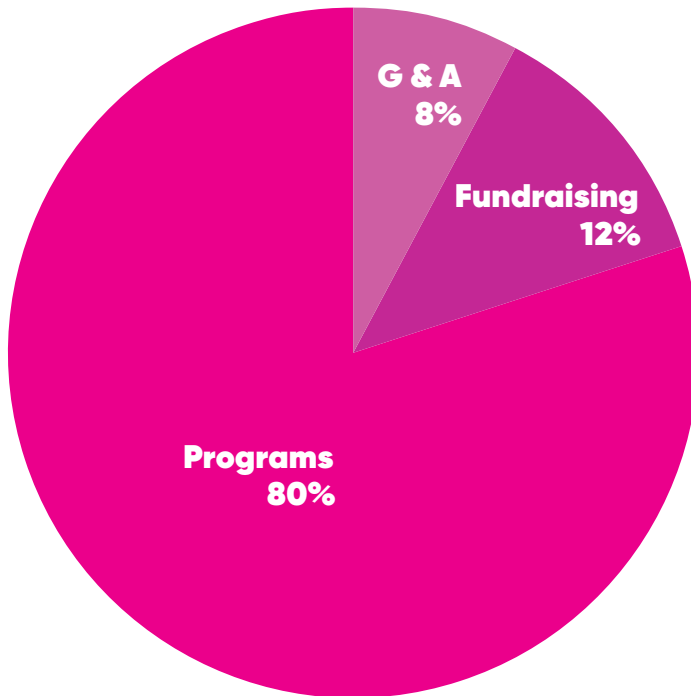


Openhouse staff members Sylvia Vargas (left) and J Jha connect at a QTAPI event.



REVENUE

Individual	\$ 334,852
Corporate	\$ 1,861,446
Government	\$ 1,874,719
Foundations	\$ 505,000
Other	\$ 487,897
Total	\$ 5,063,914



EXPENSES

Programs	\$ 3,101,999
General & Admin	\$ 316,954
Fundraising	\$ 447,975
Total	\$ 3,866,928

Assets	\$ 9,740,301
Liabilities	\$ 870,893
Net Assets	\$ 8,869,408

CIRCLE OF FRIENDS & RAINBOW CLUB DONORS



ALL OF THE ACCOMPLISHMENTS

described in this impact report were only possible through the generosity of our donors and contributors. Special appreciation goes to the Openhouse Circle of Friends, whose individual members gave at least \$1,000 last year, as well as our Corporate and Foundation Contributors. Our Board of Directors, Staff, Volunteers, and Community Members are immensely grateful for your support. We truly couldn't do any of this without you.

Please consider joining the Openhouse Circle of Friends with a gift of at least \$1,000 a year, our Rainbow Club of monthly donors, or our Legacy Circle with a bequest. Our annual giving campaign celebrates those who make all we do possible with their monetary support and their moral support of our mission to serve LGBTQ+ seniors in San Francisco. Be a part of history as we grow Openhouse into one of the nation's leading intergenerational communities fighting against ageism and for diversity and inclusion of all people under the rainbow. For more information contact Charles Renfroe on our Mission Engagement Team: crenfroe@openhouse-sf.org or 415.702.3537.

Circle of Friends

\$50,000+

Dale S. Bentley Trust
Lesbians for Good of Horizons Foundation

\$15,000+

Roland Zepf & Ted Payton
Sally Lewis

\$10,000+

Ana Zamora
James C. Hormel & Michael P. Nguyen
Mark Buchanan
Paul Donaher

\$5,000+

Ken Prag & Steve Collins
Maite Echaniz
Dr. Marcy Adelman
Margaret Mak & David Lichtman

Mark Buchanan & Shinya Kurebayashi

Neil Sims & Tim Lucas
Robert Volpe & Charles Labrecque
Victoria R. Galland

\$2,500+

Bill Lowell & Richard Davis-Lowell
Chris Davidson
Dale Barton & Erik Berglund
David P. Black Fund of Horizons Foundation
Evan Hirsch
Jenna Rapues
John Okuloski & Frank Duff
Kevin Smeds & Lissa Moran
Nanette Miller & Olga Barrera
Stanley Watson & Manny Anes

William Scherer & Dean Palompo

\$1,000+

Amanda Weitman
Brian Schneider & Robert Lieberman
Cheryl Traverse & Terry Turrentine
Cynthia Martin
Deb Stallings
Derek Gordon & Arturo Fernandez
Douglas Beck
Ed Conley
Edward Chambers
Janet Linder & Ms. Elena Moser
Jeff Lewy & Ed Eishen Gay Values Fund of Horizons Foundation
John Blazek & Mark Andrews
Kenneth Meyer
Leonie Walker & Kate O'Hanlan
Lesley Anderson & Paula Zand
Linda Gebroe

Marilyn Hayward
Mark Leno
Mary Edna Harrell & Bonnie Kates
Molly Reno & Saunterre Irish
Morey Riordan & Liz Perlman
Peter Scott
Randi Gerson & Sara Lesser
Robert-Jay Green & Holden Lee
Ruth Herring & Pamela Peniston
Scott Kramer
Sonni Zambino
Stephen Perreault
Susan Zieff
Tim Sweeney
Tong Family Fund of Vanguard Charitable
Wai Poc & Jerry Cacciotti
Yeoh Shields Fund of Horizons Foundation

Rainbow Club

Kimberly Bourque
Vince Crisostomo
Lynne Eggers
Randi Gerson & Sara Lesser
Derek Gordon & Arturo Fernandez
Emilie Alexis Gordon
Evelyn Gurevitch
Ruth Herring & Pamela Peniston

Marjorie Hilsenrad
Carole & Ron Lewis
Charlotte Lumpkins
Crisco and Margaret McCullough
Henry Milich
J O'Malley
Roger Oliver

Mindy Oppenheim
Philip Petit
Pete Renteria & Kevin Caravello
Robert Reps
William Scherer & Dean Palompo
Brian Smith
Bobbie Frederic Steinkraus

Farrel Swain
Sylvia Vargas & Shirley McGuire
Craig Waters
Randall Whitehead
Susan Wilkinson
Nate Winemiller
Roland Zepf & Ted Payton

In Memoriam: Openhouse lost several major donors and community members last fiscal year. We are saddened by their passing and feel diminished by their absence. We mourn three long-time Circle of Friends contributors and trailblazers in support of LGBTQ+ seniors and Openhouse: **Ambassador James C. Hormel, Philanthropist Alvin H. Baum, Jr.** and **Agging Services Pioneer Hadley Dale Hall.** Their leadership and generosity helped shape Openhouse and the landscape of aging in San Francisco.

In-Kind Donations

Canela Bistro & Wine Bar (600 long-stem roses and other flowers for Valentine's Day)
Genentech, Inc. (13 iPads with Apple Care & 20 WiFi Hotspot Devices)

James Morin (mattress topper for new resident)
Joan Ramo (180 designer face masks)
Michael Kerner & Kevin Zhou (graphic design & photography)

ANNUAL PARTNERSHIP PROGRAM & PARTNERS

Programs and services are also made possible by government agencies and community partners.

Alzheimer's Association California	Independent Living Resource Center of San Francisco	On Lok Lifeways
Department of Public Health	LYRIC	SAGE, Inc.
City and County of San Francisco (CCSF)	Mercy Housing California	San Francisco AIDS Foundation
Colectivo del Rescate Cultural	National Center for Lesbian Rights	San Francisco LGBT Center
		Shanti Project
		SteppingStone

We extend our thanks to the following Foundation and Corporate Partners for their generous support.

\$300,000+	Genentech	Google Employee Matching Program
Gilead Sciences, Inc.	Institute on Aging	The Curran
On Lok Lifeways	JP Morgan Chase	Visa Employee Matching Program
\$100,000+	Kaiser Permanente	
Bob A. Ross Foundation	Mixmax, Inc.	
May and Stanley Smith Charitable Trust	RAMP Foundation	\$500+
University Mound Ladies Home	Recology	Chan Zuckerberg Initiative
	San Francisco Campus for Jewish Living	Employee Matching Program
\$50,000+	\$2,500+	Dropbox Matching Gift Program
Excelerate Foundation Inc.	Archstone Foundation	Evelyn & Walter Haas, Jr. Fund
Metta Fund	Chan Zukerberg Initiative	Nonprofits Insurance Alliance of California
\$25,000+	Chemistry Hornblower Cruises and Events	Wells Fargo Foundation
Henry Mayo Newhall Foundation	James E. Roberts-Obayashi Corporation	\$100+
The Joseph & Vera Long Foundation	Meals on Wheels	AmazonSmile Foundation
\$10,000+	Pharmaceutical Researchers and Manufacturers of America (PhRMA)	Charles Schwab Foundation
Apple	Sutter Health CPMC	Docusign
BlackRock Gives		Federal Home Loan Bank San Francisco
First Republic Bank	\$1,000+	Good Today, Inc.
Freeman Foundation	Archstone Foundation	Muslims for Progressive Values
Horizons Foundation	Avenidas	Vacation SF
Waymo	Chip Conley Foundation	VMware Foundation
\$5,000+	Cisco	
Alegre Home Care		
Daniel Cooney Fine Art		

OPENHOUSE LAUNCHED ITS ANNUAL PARTNERSHIP PROGRAM

(APP) in FY21, to offer corporations, local foundations, and other non-profit organizations the opportunity to support Openhouse and LGBTQ+ seniors with an annual contribution. The single sponsorship provides partner participation and recognition all year long. We are pleased to recognize our annual partners, and thank them again for their trust and commitment in the Openhouse mission to serve and honor LGBTQ+ seniors.

PRESENTING PARTNER



CHAMPION PARTNERS



SUPPORTER PARTNER



CUSTOM LEVEL PARTNER

Genentech

ALLY PARTNERS

First Republic Bank
 Institute on Aging
 JP Morgan Chase
 Kaiser Permanente
 Recology

CUSTOM LEVEL PARTNERS

Chan Zukerberg Initiative
 Sutter Health CPMC

FRIEND PARTNERS

Alegre Home Care
 James E. Roberts-Obayashi Corporation
 Meals on Wheels
 PhRMA

INDIVIDUAL DONOR APPRECIATION

\$500–\$999

Anna Chodos
Carmella Sanders and James Sanders
Carol Rudisill and Ladi Hong-Markham
Carole Lewis
Chris Lowell and Stephen Spencer
Cornelis Van Aalst and Jeffrey Robinson
Dan Dodd and Hiro Dodd
Dennis Cramer
Donna Skultety and Robert Cooney
Erin Rooney
Javier Zamora
Jean-Paul Samaha
Jerry Rickerson
Jim Tellefson
Jules Epstein and Georgia Epstein
Kathleen Fitzpatrick
Kenneth Stokes
Kris Hermanns and Merri Baldwin
Lawrence Hilty and Donald Rathbone
Linda McKay
Marshall Kirk
McKusick and Eric P. Allman
Michael Dunn and Santiago Esparza
Michael Kay and Stephen Shearer
Michael Krupa
Nate Winemiller
Neil Lang and Joe Pessa
Pedro Mascaro and Kurt Stammberger
Randall Whitehead

Regina Meyers
Robert Reps
Robert Sass
Sandra Marilyn
Steve Vettel
Sue Martin
Sue Parsell
Sue Rosser and Patricia H. Miller
Susan Wolfson
Sylvia Vargas and Shirley McGuire
Ted Wyder
Vince Crisostomo
Warren Anderson
William Yee

\$250–\$499

Anthony Doolan
Bret Johnson
Cathy Maupin
Clifton Stubblefield
Francoise Herrmann
Fredric Holub
Gloria Cavanaugh
Hongbo Lu
J O'Malley
Jane Dahlgren and Joyce Calvert
Joy Cavanaugh
Katherine Kennedy
Larry Edwards
Laurence Costa
Lora Connolly
Lynne Eggers
Maritza Penagos
Marjorie Hilsenrad
Matt McCabe and Charles Wilson
Paul Mugnier
Sean Kreiger
Sophie Ziegler
Sumi Colligan and Gail Bobin
Timothy Scheie and Craig Sellers

\$100–\$249

Adrienne Torf
Alan Leung
Alba Barreto
Alexander Muscat
Alisha Solis
B.J. Stiles and Steven McCollom
Barbara Hodgen
Bobbie Frederica Steinkraus
Brett Turner
C. Gordon Howe and Wilma Reichard
Carl Bailey
Carol Enright
Carol Jean Wisnieski
Carol Russak
Chad Berwald
Charlotte Lumpkins
Charlotte Mao
Christine Daniel and Cecily Peterson
Clare Murphy
Crisco McCullough and Margaret McCullough
Crystal Jang and Sydney Yeong
Cynthia Neumann
Dana Washington
Dianne O'Connell
Ed Gimelli
Edward Gibbons
Elaine Musselman
Elana Nachman
Elizabeth Storey and Susan Wilson
Emilie Alexis Gordon
Farrel Swain
Fatemah Nikchehi and Val Altamirano
George Hatch
Gil Aurellano and Michael Kovitch
Harvey Co Chien

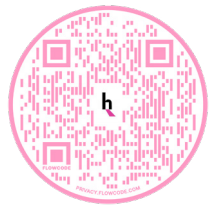
Hunter Harris
James Haas
James Marmack
James Taul and David Hopmann
Janet Spears and Rae Marie Laguna
Jason Palm
Jeffrey Weil
Jennifer Herring
Jennifer Tiexiera
Jerry Brown
Jill Hollander
Joseph Wolf
Julianna Driskel
Karen Goetz
Kate Hamel
Kathleen Healy and Marie E. Mohr
Keith Baillie
Kendra Albert
Kenneth Aron and Felicia Aron
Kevin Gerber
Kimberly Bourque
Leo Gallant
Linda Scaparotti
Louise Walter
Marc Minardi and Dennis Edelman
Margo George and Catherine Karrass
Mark Lenz
Marlys Ferrill
Matthew Cimino
Melissa Mabry
Mindy Oppenheim
Nancy Drooker and Alix Sabin
Nate Winemiller
Nirel Rillera
Noe Gutierrez
Norman Burns
Pan Haskins
Parag Chokshi
Patricia Hacker
Paul Gabriel
Pete Renteria and Kevin Caravello

Peter McGrath and Han Wang
Philip Petit
Randall Wittorp and Theodore Mazzone
Richard Sutherland
Ricki Boden and Andrea Lyons
Roger Doughty and Royce C. Lin MD
Ron Goodman
Ronald Porter
Ryan Gibo
Sandra Chu
Sarialie Pennington and Tom Herz
Sharon Adelson and Judith Federico
Sophie Roberts
Steven Tierney
Susan Englander and John Derham
Susan Ketcham and Anne Casscells
Susan Wilkinson
Teresa Baum
Thomas Lauderbach
Thomas Yaussy
Timothy Bridge and William L. Holzemer
Ting Jiang
Tom Nolan and Larry Friesen
Walter Bowman
William Conrad

\$10–\$99

Aaron Danzig
Adele Prandini
Aki Nakanishi
Alejandra Cervantes-Paras
Alejandro Torres
Alex Poulos
Alison Greene

Alison Wellsfry
Allison Sparks
Alyssa Chen
Amy Brokering and T. Mark Brokering
Amy Martens
Amy Poon
Andrew Bloom
Andrew Blotky
Andrew Ingall
Andy Schwartz
Angel Garfold
Anne Bluethenthal and Donna Rae Palmer
Anne Claiborne
Anne Teutschel
Arika Cherry-Jackson
Arlene Ruffat
Armen Hov
Arthur Peremans
Ashlea Mittelstaedt
Audrey Crane
Barbara French and Michelle Dodd
Barbara Perez
Barbara Van Almelo-Nelson
Beatrix Jones
Betty Chan Lew
Bill Ereneta
Bob Leone and Ed Decker
Bobbie Davis
Bobby Wise
Bradley Cavalier
Brandon Martinez
Brenda Kramer
Brett Mangels
Bri Barnett
Brian Smith
Bruce Prescott
Bryan Krekel
Bryant Enge
Bryn Baker
Caitlin Grimm
Carolina Diaz



Scan here if
you'd like to join
this list with a
donation!

INDIVIDUAL DONOR APPRECIATION

\$10-\$99 (con't)

Catherine Merschel and Denah Joseph
Charles Geerhart and Cathy Geerhart
Cherie Golant
Christian Edvardsen
Christian Orion
Christine Chudd
Chuck Wendling
Claudia Center
Cole Preece
Constance Weatherbe
Corinne Sue Wick and Cynthia Laird
Craig Waters
Curtis Yancy III
Dakarai Aarons
Dale Danley
Dale Kowalski
Daniel Davis
Daniel Do
Daniel Johnson
Daniel Mclane
David Randall
David Zisa
Deadre Bruetsch
Deborah Ausman
Deborah Craig
Deborah Wool
Debra Chaw
Debra Rooker
Denise Dunne
Denise Latka
Derek Jirachaikitti
Desiree Thompson
Diane Mondini and Caring Companions at Home
Dina Jacobson
Dominic Martello
Don Bardole
Douglas Leighton
Drew Rosner
Duff Axsom

Edward Galvin
Edwin Sheehan
Elana Ron
Elinor Waxman and Joanne Yeaton
Elison Derrick Lato
Elyse Anderson
Emalie Huriaux
Emelle Sonh
Emily Hargrave
Emily Konisky
Emma Castiglione
Enrique Henestroza Anguiano
Eric Blunt
Erica Anderson
Evelyn Gurevitch
Fannie Clarke
Frank Brooks
Georg Gottschalk
Glenna Murillo
Greg Rebchook
Gregory Sottolano
Gregory Tan
Guy Berryessa
Haley Marie
Hannah Noel
Heather Giovanni
Heather Jones
Helene Wenzel and Abby Zimberg
Henry Milich
Henry Ostendorf
Hilary Sun
Hugo Arenas
Hung Doan
Ingrid Nelson
Ingu Yun
Iris Biblowitz
Irving Hulteen
Isabel Chang
Isabel Penzini
Ivy Tao
Jacob Rudolph
Jacquelyn Sinatra

James Illig and Larry Dotz
James Lonergan
James Robinson
James Shalkam
Jana Gold
Jandi Lira
Jane Ziegelman
Janet Leiva
Janine Yalun
Jared Braiterman
Jason Flatt
Jayden Ziegler
Jean Libera
Jeffrey Foldvik
Jei Africa
Jennifer Gee
Jennifer Lynch
Jeri Raimondi
Jessie Aguirre
Jil Rich
Jim Brogan and James E. Brogan
Joan Bush
Joan Field
Joan Haukom
Joan Suwalsky
Joaquin Castillo-Arana
Joey Mcdaniel
John Barnaby
John Nockels
John Soter
Jon Harris
Jonathan Cheung
Jonathan Funk
Jonathan Rudolph
Jordan Chow
Judith Keyssar
Judith Lewis
Julie Flegel
Julie Valentine
Justine Cable
Karl Yaeger
Katherine Mancuso
Kathy Phillips
Keaton Ollech
Keefe Chow

Kegel Kater
Kelly Wilson Kent
Ken Kalenbach
Kenneth Kehoe
Kerry Skyles
Kimberley Jones
Kimberly Bgn
Kimberly Cranfield
Kristina Hathaway
Kristina Hudelson
Kristine Law
Kyle Wilcots
Lance Sprague
Larriana Williams
Larry Wexler
Laura McClain
Lawrence Klein
Leah Reitz
Linda Gollobher
Linda Werner and Nancy Johnsen
Lisa Altman
Lizette Medrano
Loren Michael Mortimer
Lori Inouye
Luci Bost
Manasi Kulkarni
Marc Purcell
Marna Clark
Mary Dougherty
Mary Leigh McLellan
Mary Torre
Maryn Eisenhart
Mateus Schmitt
Matt Jennings
Maulie Dass
Melinda Campero
Melody Cortez
Meredith Lloyd
Meryl Glass
Michael Cohen
Michael Hager and Hager Design Group
Michael Holth
Michael Mahaley

Michael McGary
Michael Poplaro
Michael Sorensen
Michele Davis
Mikee Socks
Minhdung Ta
Miriam Geller
Nadine James
Nan O'Connor
Nathan Potter and Melissa Potter
NiNi Yu
Ora Prochovnick and Ms. Rena Frantz
Owen Starr
Paige Leslie
Pamela Kersey
Patricia Craves
Patricia Robertson and Susan Ashton
Patrick Kelly
Patty Robertson
Paul Henning and Carol Henning
Paul Rehak
Peter Gudd
Peter Warhit
Raegena Raymond-Brunker
Rahn Anderson
Regina Tonn
Rence Uson
Richard Newton
Richard Williams
Richard Zhang
Rob Wckert
Robert Dockendorff
Robert Knight
Robin Bowen
Roger Oliver
Roland Stern
Ronda Wespalis
Rose Oser
Rudi Perez
Russell Graves
Sabine Middlemass
Sara Mahdavi

Sarah Krueger
Sarah Mark
Scott Aiu
Scott Gardner
Scott Hester-Johnson
Scott Howlett
Shannon Thorn
Sharon Slesinski
Shawn Matloob
Sherry Benson
Shireen McSpadden
Skyler Cylke
Stephanie Salas
Susan Rose
Sydney Leung
Sylvia Inchausti
Tauria linala
Taylor Hassman
Ted Kezios
Teri Runyan
Terry Bottom
Thalia Moore and Anna Kruger
Thomas Libby
Thomas Nelson
Timothy Wolfred
Tom Eaton
Tom Koester
Toni Mesec
Tony King
Tova Green
Tracy Lawson
Uncheedah Wilson
Van Rookhuyzen
Victor Floyd
Victoria Moylan
Victoria Scolini
Vikram Narayam
Westy Faison
Will Roque
Will Roscoe
William Good
William Haskell and Bob Gordon
Wolf Schweiger
Yvonne Resnick

THANK YOU!

HOLIDAY SAUCE...PANDEMIC!

For a second year, San Francisco's Curran Theatre and internationally acclaimed performance artist Taylor Mac selected Openhouse for a benefit performance. Last December, the 2020 Ibsen Award winner and MacArthur Fellow blended music, film, burlesque and random acts of fabulousness to reframe the songs you love and the holidays you hate.

Taylor Mac reminds us of the collective power of our chosen families, a message that resonates during the COVID era when so many have lost so much. At the first Holiday Sauce benefit for Openhouse in 2018, Taylor Mac literally passed the hat for LGBTQ+ seniors during the entire run of the show. ▼



VOLUNTEERS ARE ESSENTIAL to the work of Openhouse. They provide value beyond the direct services to LGBTQ+ seniors, they save Openhouse thousands of dollars, making their work critical to our success. Last year, volunteers donated more than 8,000 hours to Openhouse in a variety of ways: making emotional support telephone calls, delivering groceries and other essential items, building holiday and LGBTQ+ Pride bags/baskets, and providing technical support for on-line programming.

The California Association of Nonprofits estimates each volunteer hour is equivalent to \$33.60. Therefore, an estimate of the monetary value of volunteers and the savings to Openhouse in FY21 is over \$200,000, and their generosity and caring commitment is priceless! **We love our dedicated volunteers.**



◀ **OUR LARGEST MEAL** of the year is Fall Feast held annually in November. We can hardly wait to return to the event as pictured on the left. But until then we will continue to bring community to LGBTQ+ seniors.



© 2021 Openhouse | All rights reserved.

Openhouse

Bob Ross LGBT Senior Center
65 Laguna Street
San Francisco, CA 94102
415.296.8995
www.openhouseSF.org

Facebook: [openhouseSF](https://www.facebook.com/openhouseSF)
Twitter: [@openhouseSF](https://twitter.com/openhouseSF)
Instagram: [openhouseSF](https://www.instagram.com/openhouseSF)

Scan here to sign up to volunteer!

