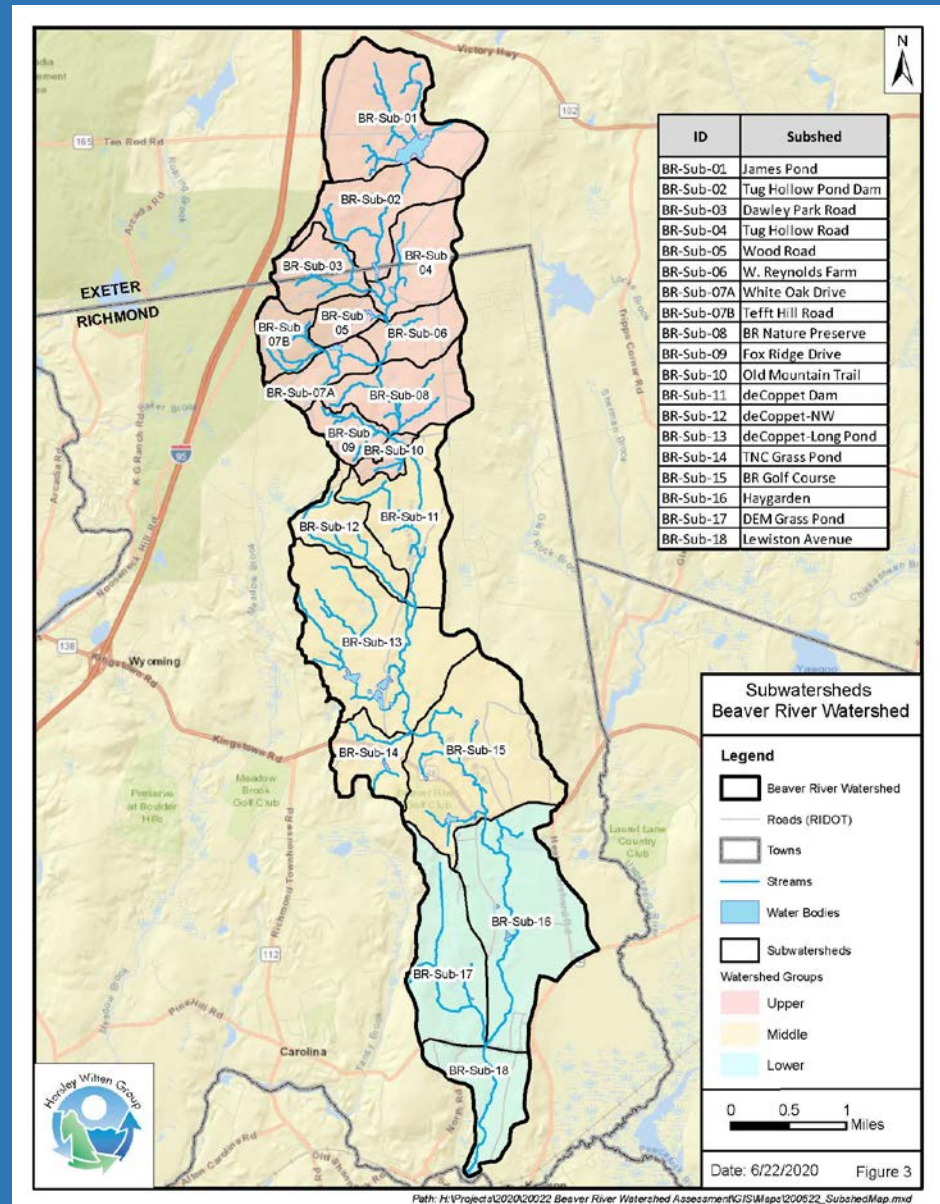


Town of Richmond: Beaver River Assessment

- 12.2-mi² watershed, 11-mile long river situated largely in Richmond
- One of 8 tributaries of the Wood-Pawcatuck River watershed designated in 2019 as federal Wild and Scenic River
- High natural resource and heritage values to the Town and project partners (RIDEM, WPWA, TU, RIBTC, TNC, BRVCA)
- Prioritizations with scoring methods for (1) potential protection of sites with high ecological importance; and (2) restoration opportunities
- Town contracted with Horsley Witten to conduct SNEP-funded study
- Desktop analysis underway with study results to be presented at public meeting in late 2020; complete study by early 2021

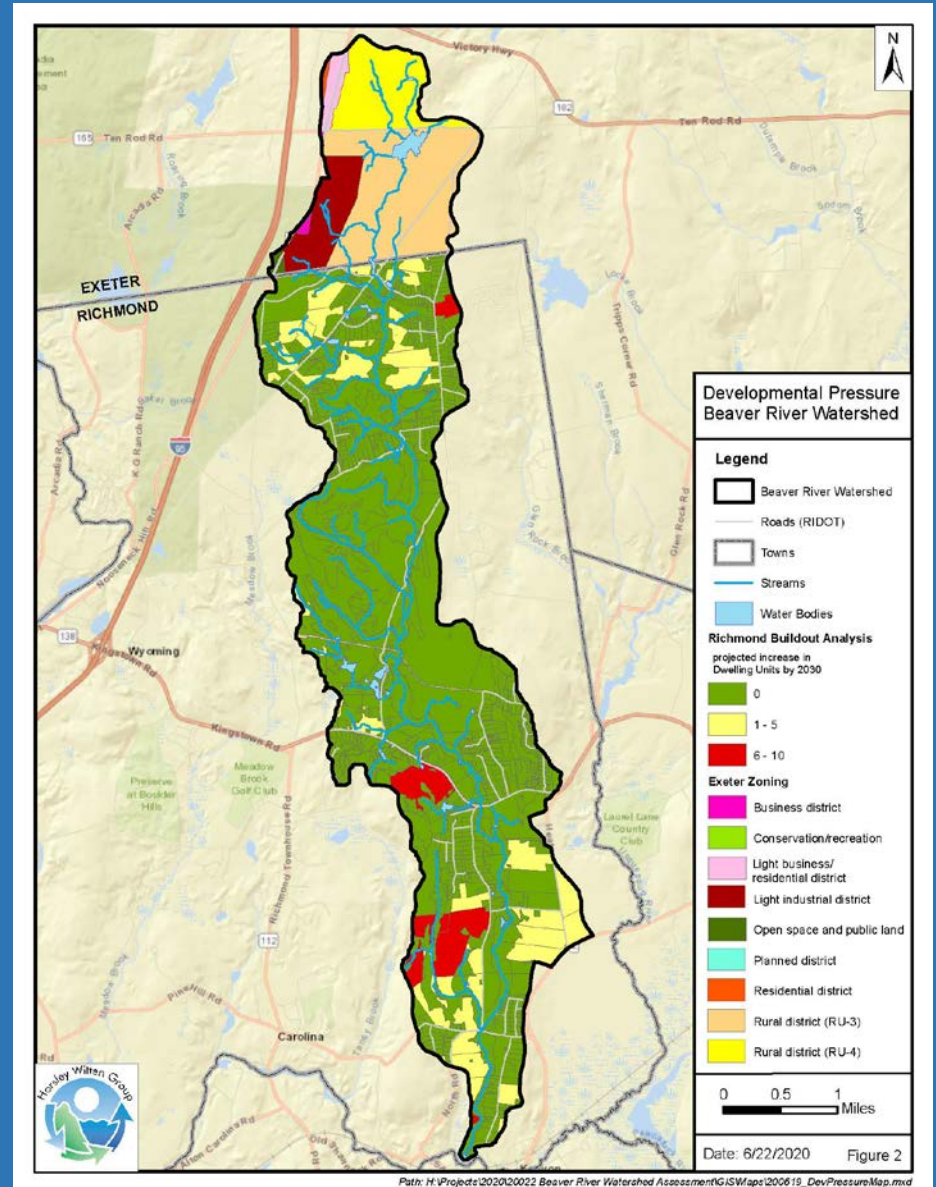
Town of Richmond: Beaver River Assessment

- HUC-12 sub-watersheds identified and delineated
- Distinguished according to land use condition and natural resource values



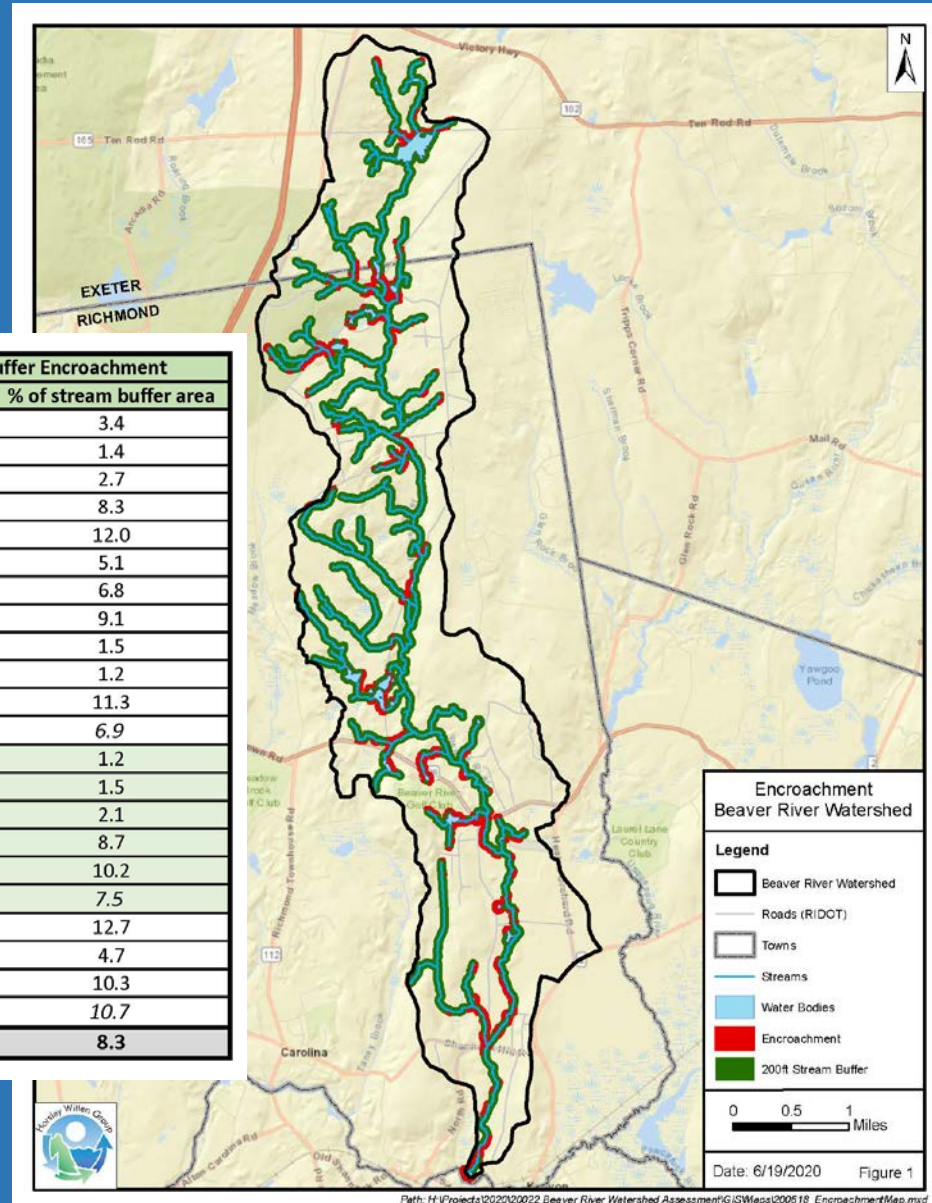
Town of Richmond: Beaver River Assessment

- Development pressure in the watershed
- Potential build-out by 2030



Town of Richmond: Beaver River Assessment

- 200-foot streams buffers



Subshed Group	Subshed	ID	Area	Stream Length	Buffer Encroachment	
			ac	miles	ac	% of stream buffer area
Upper	James Pond	BR-Sub-01	718.0	2.9	6.3	3.4
Upper	Tug Hollow Pond Dam	BR-Sub-02	428.4	2.1	1.5	1.4
Upper	Dawley Park Road	BR-Sub-03	251.9	1.6	2.1	2.7
Upper	Tug Hollow Road	BR-Sub-04	338.2	1.5	5.8	8.3
Upper	Wood Road	BR-Sub-05	123.3	0.2	3.9	12.0
Upper	W. Reynolds Farm	BR-Sub-06	218.1	0.8	1.8	5.1
Upper	White Oak Drive	BR-Sub-07A	174.3	1.2	4.1	6.8
Upper	Tefft Hill Road	BR-Sub-07B	176.5	1.4	5.5	9.1
Upper	BR Nature Preserve	BR-Sub-08	384.6	2.5	1.7	1.5
Upper	Fox Ridge Drive	BR-Sub-09	153.3	1.6	0.8	1.2
Upper	Old Mountain Trail	BR-Sub-10	73.3	0.8	4.1	11.3
<i>Upper Totals</i>			<i>3039.9</i>	<i>16.6</i>	<i>37.7</i>	<i>6.9</i>
Middle	deCoppet Dam	BR-Sub-11	489.5	3.0	1.7	1.2
Middle	deCoppet-NW	BR-Sub-12	264.2	2.4	1.7	1.5
Middle	deCoppet-Long Pond	BR-Sub-13	971.6	5.8	6.7	2.1
Middle	TNC Grass Pond	BR-Sub-14	243.3	1.2	5.6	8.7
Middle	BR Golf Course	BR-Sub-15	936.1	3.4	18.1	10.2
<i>Middle Totals</i>			<i>2904.7</i>	<i>15.8</i>	<i>33.8</i>	<i>7.5</i>
Lower	Haygarden	BR-Sub-16	952.0	3.0	19.7	12.7
Lower	DEM Grass Pond	BR-Sub-17	558.1	2.7	6.1	4.7
Lower	Lewiston Avenue	BR-Sub-18	340.3	1.3	6.4	10.3
<i>Lower Totals</i>			<i>1850.4</i>	<i>7.0</i>	<i>32.3</i>	<i>10.7</i>
Watershed Totals			7,794.97	39.4	103.7	8.3

Town of Richmond: Beaver River Assessment

- RIDEM and TU partnering in providing water temperature loggers to support desktop assessment
- 31 loggers installed based on team review of land use and natural resource coverages, plus previous monitoring by RIDEM and others
- Loggers to remain in-place through October to identify potential at-risk river and resilient reaches

