



Navigation



SIGN UP TO OUR MAILING LIST

FOLLOW:

## UPCOMING: Mary and Kiki - Two new musicals

by **Julian Eaves** on 15th July 2017 in **Features, News**

0

This week Julian Eaves took a look at two new musicals in development *Mary Stuart* and *Kiki, the Queen of Montparnasse*.



**MARY STUART, Karamel Café, Mountview Academy**

A lot of drama schools commission new work, and this is one of the primary places to go to find new and exciting musical theatre. That is emphatically what we find here in this remarkable new work in development by German writer and dramaturg, Kolja Schallenberg, and his gifted and

perfectly well-matched composer-collaborator, Paul Glaser. Schallenberg translates Schiller into English here, and while the effect is literary and worthy, in his desire to be 'authentic' and preserve the intention of the original (a rather high-bourgeois, if not actually courtly one – think of Shakespeare, but without the common touch), where this script really scores is in the chunks Schallenberg gives to Glaser to set to music.

There, the magic occurs. The combination of Glaser's contemporary, jazz-infused, gently rock-inflected scoring with Schallenberg's unfancy and yet heroic translations of Schiller's text. The combination is simply irresistible, and even more so when you consider the stunning casting decision to place in a mainly Caucasian cast the royal roles of Mary Queen of Scots and Elizabeth of England with two established and highly experienced African heritage actors, respectively Jacqui Dubois and Marion Campbell. Not only that, they have miraculous voices with the kind of power and artistry that will hold an audience either in mainstream popular shows or at Ronnie Scott's. This stroke of genius lifts the work into really interesting terrain: their performances clearly mark them apart from the rest of the cast, and their manner of delivery of the music, wholly suited to the style in which their music is composed, is wildly different from the much more straight-laced 'musical theatre' vernacular of the rest of the score, and all the score departs – quite a long way – from the austere rhetorical tenor of the dialogue.

To stage such a work is an incredible challenge. With such a divergence of 'styles' within the same work, it is going to take some time to sort out how best to give physical expression to it. What we have so far is an unobtrusive design of lots of pictureframes in a black box. But the queens wear leather, and heels, and are high-glamour objects – and are immediately much more attractive to audiences. This is going to be a fascinating developmental path to follow. Similarly, deciding what to do with the rest of the cast, and how best to use them physically in such an environment is going to be even more of a challenge. This is a new work to watch with great attention.

Find out more at [www.marystuartthemusical.com](http://www.marystuartthemusical.com)

67

1



### **KIKI, THE QUEEN OF MONTPARNASSE** **Drayton Arms Theatre**

Meanwhile, a different view of royalty is on offer in this British premiere of a sweetly charming concoction presenting a kind of potted biography of early 20<sup>th</sup>-century bohemian muse, Alice Prin, who re-invented herself under the name that gives the show its title, in a story brought delightfully to life on the French stage by Herve Devolder and Milena Marinelli (both write book and lyrics, Devolder does the music).

One of Mountview's graduate producers, Mathilde Moulin, is responsible for translating the text with Daniel Cooper, shortening it and getting in Jill Patterson (a Mountview alumna of earlier slightly earlier vintage) to direct. It's an effective one-woman show for the actress taking the part of the waif-makes-good-and-then-loses-it-all-to-drugs-and-booze tale. It has lots of light charm; the songs are pretty pastiches of 1920s, 1930s French popular tunes, without ever quite establishing their own voice.

About Julian Eaves



Julian Eaves. Writes book, music and lyrics of new musicals. Currently working on, 'ISLAND', a contemporary haunted-house, murder-mystery, college-reunion thriller. Recent productions: 'BLIND DATE', Iris Theatre; 'DREAMS THAT MONEY CAN BUY', workshop and showcase at LOST Theatre; 'TINY SHOWS', So-and-So's Arts Club; also work for Chichester Festival Theatre (National Theatre Connections), Courtyard Theatre ('A WINTER'S TALE', dir. Phil Willmott), Arc Theatre, Trowbridge and Harlequin Theatre, Redhill. Previously, Royal Court Young People's Theatre, Edinburgh Fringe ('HYSTERIA!', an original musical with Jessica Martin), National Youth Theatre.

[View all posts by Julian Eaves →](#)

**Daniel Cooper, Herve Devolder, Jacqui Dubois, Jill Patterson, Kiki Queen Of Montparnasse, Kolja Schallenberg, Marion Campbell, Mary Stuart, Mathilde Moulin, Milena Marinelli, Paul Glaser**

0 Comments

British Theatre

Login ▾

Recommend

Share

Sort by Best ▾



Start the discussion...

LOG IN WITH

OR SIGN UP WITH DISQUS

Name

Be the first to comment.

ALSO ON BRITISH THEATRE

**REVIEW: Thoroughly Modern Millie, Milton Keynes Theatre ★★**

3 comments • 6 months ago•

**Jeremy Harding** — Perhaps you and your fellow reviewers ought to actually view things from the perspective of a regular theatre goer! The crowd around me last week were in ...

**REVIEW: Dear Evan Hansen, Original Broadway Cast Recording ★★★★★**

2 comments • 6 months ago•

**BritishTheatre.com** — Thanks for the feedback Bobby. I've always admired Pasek and Paul's work and am gobsmacked by just how much emotion Ben Platt is able to put into a ...

**Top 100 Greatest Musicals Poll – Number 5 – Hamilton**

1 comment • 2 months ago•

**Nicholas Smith** — Seriously? That's like Beyonce getting into the top ten of the Great American Songbook. Too soon.

**REVIEW: Giles Terera and Friends, The Pheasantry ★★★★★**

2 comments • 8 months ago•

**BritishTheatre.com** — Thanks for your comment on the show. We've heard great things. Did anyone else see the show?

Subscribe Add Disqus to your site Add Privacy

Search...

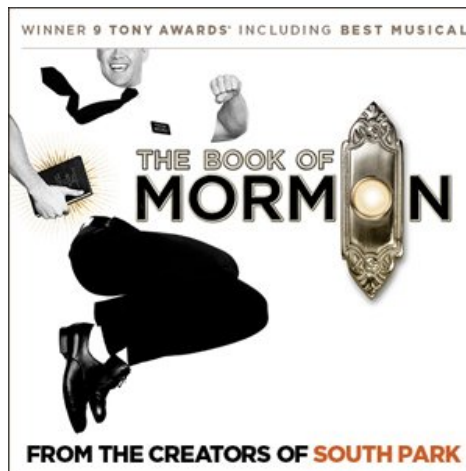


**73**  
SHARES

#### CATEGORIES

- [Amateur Stage \(11\)](#)
- [Book \(8\)](#)
- [Broadway \(128\)](#)
- [Cabaret \(21\)](#)
- [Concerts \(11\)](#)
- [Critic Round Ups \(7\)](#)
- [Dance \(8\)](#)
- [DVD \(2\)](#)
- [Edinburgh Festival \(64\)](#)
- [Events \(77\)](#)
- [Exclusive \(5\)](#)

- [Features \(217\)](#)
- [Fourthwall \(3\)](#)
- [Gallery \(136\)](#)
- [Interviews \(40\)](#)
- [LGBT \(33\)](#)
- [Music \(24\)](#)
- [News \(1,290\)](#)
- [Off West End \(880\)](#)
- [Opera \(19\)](#)
- [Red Carpet \(1\)](#)
- [Regional \(144\)](#)
- [Reviews \(1,106\)](#)
- [Touring \(450\)](#)
- [Video \(71\)](#)
- [West End \(882\)](#)



---

OPENING SOON

---

- 26 August 2017 - [The Blues Brothers Summer Special](#)
- 15 September 2017 - [Labour Of Love](#)
- 28 September 2017 - [The Toxic Avenger](#)
- 28 September 2017 - [Young Frankenstein](#)
- 30 September 2017 - [Oslo](#)
- 3 October 2017 - [Heisenberg: The Uncertainty Principle](#)

## CLOSING SOON

---

2 September 2017 - [The Mentor](#)  
9 September 2017 - [The Wind In The Willows – London Palladium](#)  
9 September 2017 - [Lady Day at Emerson's Bar and Grill](#)  
30 September 2017 - [An American In Paris](#)  
14 October 2017 - [Evita](#)  
26 November 2017 - [The Blues Brothers Summer Special](#)

---

[ABOUT](#) | [CONTACT](#) | [PRIVACY](#) | [ADVERTISE](#) | [JOIN THE TEAM](#) | [PRESS/MEDIA](#) | [OUR RATING SYSTEM](#)

© BRITISHTHEATRE.COM 2017 All Rights Reserved.

Website Design - [Busy Bee Marketing](#)