



# Gippsland Lakes Aquatic Trail

PRIORITISED & STAGED WORKS PACKAGES

September 2021

*Destination* **GIPPSLAND**





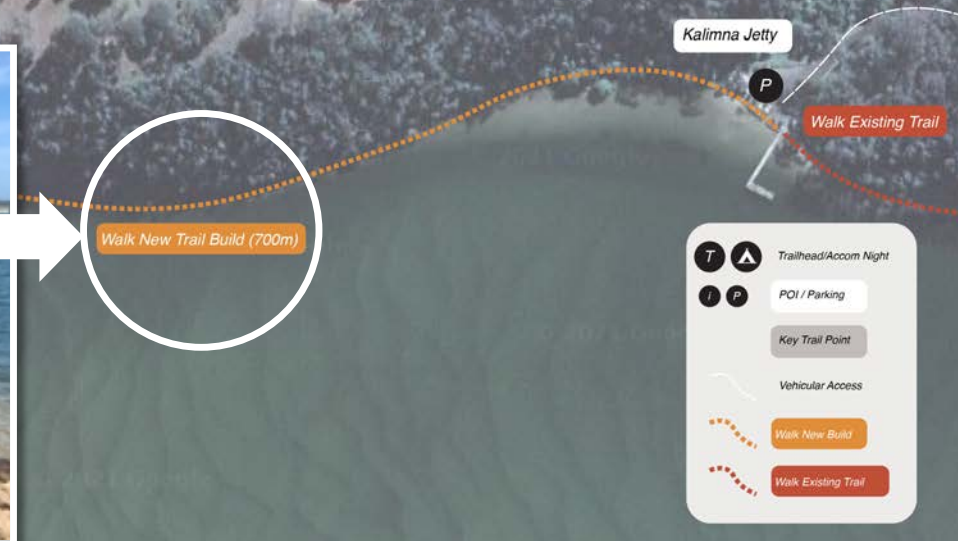
# WORKS PACKAGE 1

## Kalimna-Nyerimilang trail and footbridge

- GLAT Trail #1
- Creates stand-alone experience
- Connects community
- Visitor, economy, tourism and community benefit

### Works include:

- Assessments: engineering, marine, environmental, cultural, permits
- Design and engineering
- Construction
- Signage and wayfinding
- **Est. cost: \$2,728,500**





# WORKS PACKAGE 2

## Sperm Whale Head trails

- GLAT Trail #1, #2
- Creates stand-alone experience/s
- Substantially improves visitor experience
- Creates logical multi-activity loops
- Activates Loch Sport (& Rotamah)
- Visitor, economy, tourism and community benefit

### Works include:

- Assessments: environmental, cultural, permits
- New trail construction
- Existing trail upgrades
- Signage and wayfinding
- Trailhead
- **Est. cost: \$2,020,000**





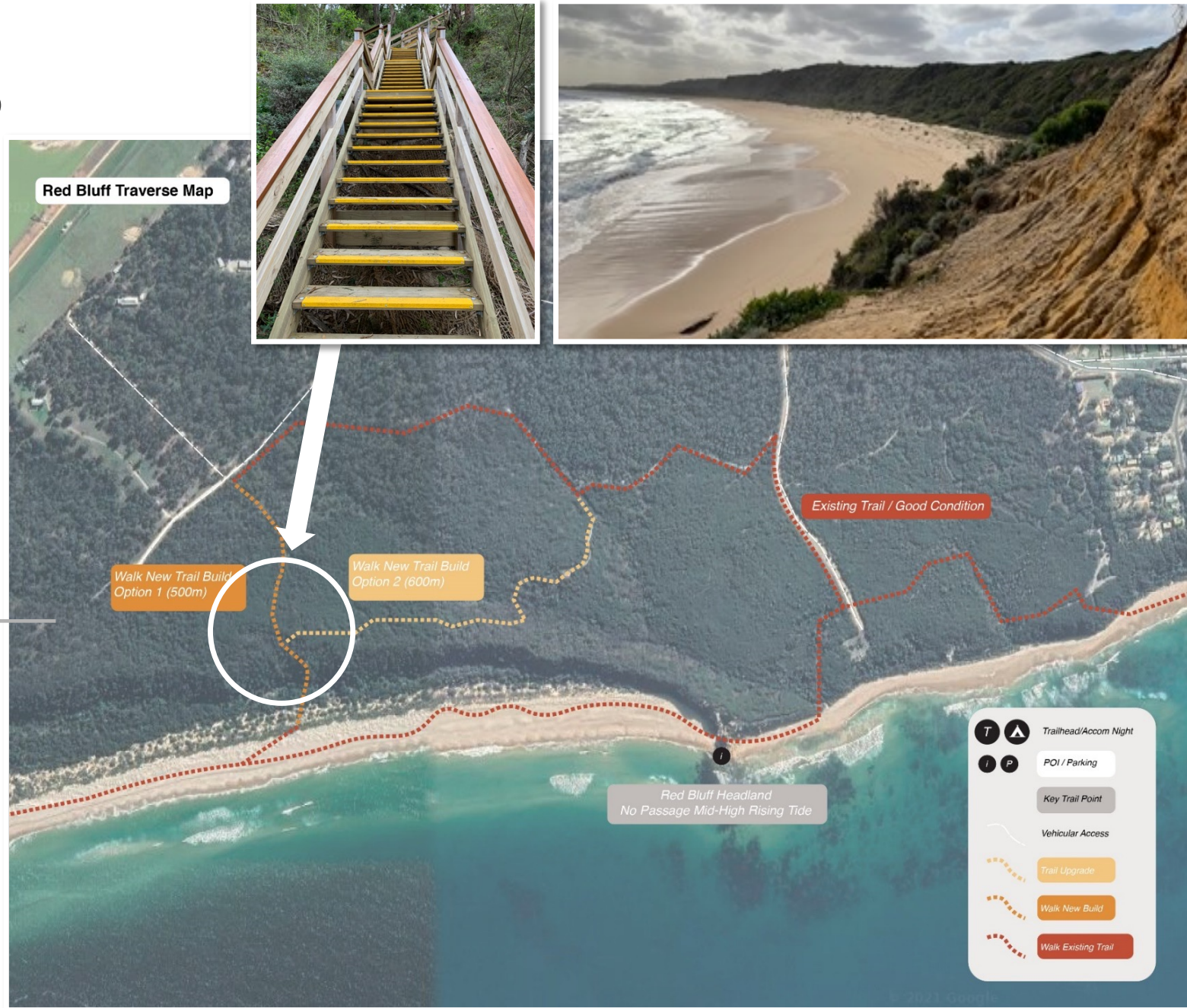
# WORKS PACKAGE 3

## Red Bluff Trail Link

- GLAT Trail #3
- Logically links Lake Tyers Beach to Lake Gippsland
- Creates stand-alone experience
- Substantially improves visitor experience
- Risk and safety outcomes
- Visitor, economy, tourism and community benefit

### Works include:

- Assessments: environmental, cultural, permits
- New trail construction incl stairs
- Remediation of walkway Lake Tyers Beach
- Signage and wayfinding
- **Est. cost: \$625,000**





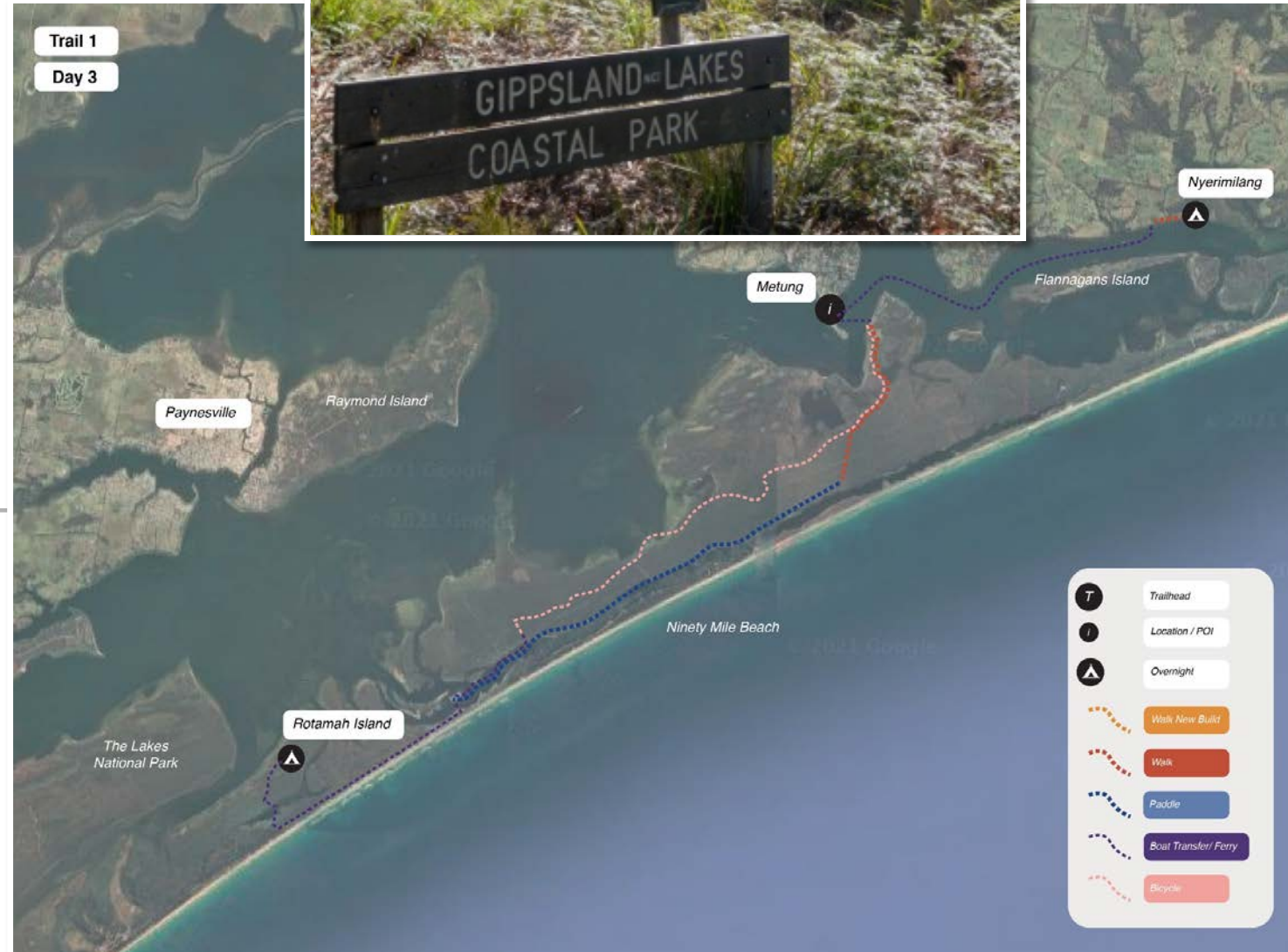
# WORKS PACKAGE 4

## Bunga Arm Trails

- GLAT Trails #1, #2
- Creates stand-alone experience/s
- Substantially improves visitor experience
- Creates logical multi-activity loops
- Activates Metung
- Visitor, economy, tourism and community benefit
- Environmental improvements

### Works include:

- Assessments: environmental, cultural, permits
- Existing trail upgrades
- Signage and wayfinding
- Infrastructure – gate, stairs
- **Est. cost: \$497,000**



# WORKS PACKAGE 5

## Kayak launch facilities

- GLAT Trail #1
- Activates land-based activities available on north side of Bunga Arm
- Creates stand alone multi-activity tours
- Sustainability outcomes
- Visitor, economy, tourism and community benefit
- Boat security

### Works include:

- Assessments: environmental, cultural, permits
- Critical infrastructure – floating etty, boat ramp, stairs, kayak tethering
- **Est. cost: \$298,300**





# WORKS PACKAGE 6

## Overnight nodes – feasibility

- GLAT Trails #1, #2
- Finalises feasibility of overnight nodes
- Identifies and sets framework for commercial operations
- Identifies potential operators

---

### Works include:

- Assessments: environmental, cultural, permits
- Commercial & cultural partnerships study
- **Est. cost: \$125,000**





# WORKS PACKAGE 7<sup>(A+B)</sup> & 8<sup>(A+B)</sup>

## ROTAMAH & NYERIMILANG O/N NODES

- GLAT Trails #1, #2
- Activates premium nature-based accommodation
- Reinvigorates Rotamah experience
- Leverages Nyerimilang experience
- Visitor, economy, tourism and community benefit
- Gunaikurnai cultural and business opportunities
- Public + Private investments

### Works include:

- Design, engineering, project management,
- Accommodation pod and facilities build
- Landscaping
- Services connection (water, power, sewage)
- **Est. cost: \$6,325,000 private**
- **Est. cost \$2,000,000 public**





# WORKS PACKAGE 9

## Latrobe River trails upgrade

- GLAT Trail #4
- Activates improved & extended cycling experience
- Improves visitor amenity
- Improved wetlands interpretation
- Sustainability outcomes

### Works include:

- Existing trail upgrades
- Signage and wayfinding
- Trailhead at Port of Sale
- **Est. cost: \$330,000**





# WORKS PACKAGE 10

## Latrobe River jetties / boat launches

- GLAT Trail #4
- Activates Latrobe River for paddlecraft
- Improves visitor and boat tour amenity
- Riverbank sustainability
- Enables multi-activity tours
- Access to wetlands



### Works include:

- Environmental, heritage, cultural assessments
- Design, build, install jetties
- Infrastructure – picnic and seating
- **Est. cost: \$595,000**



# WORKS PACKAGE 11

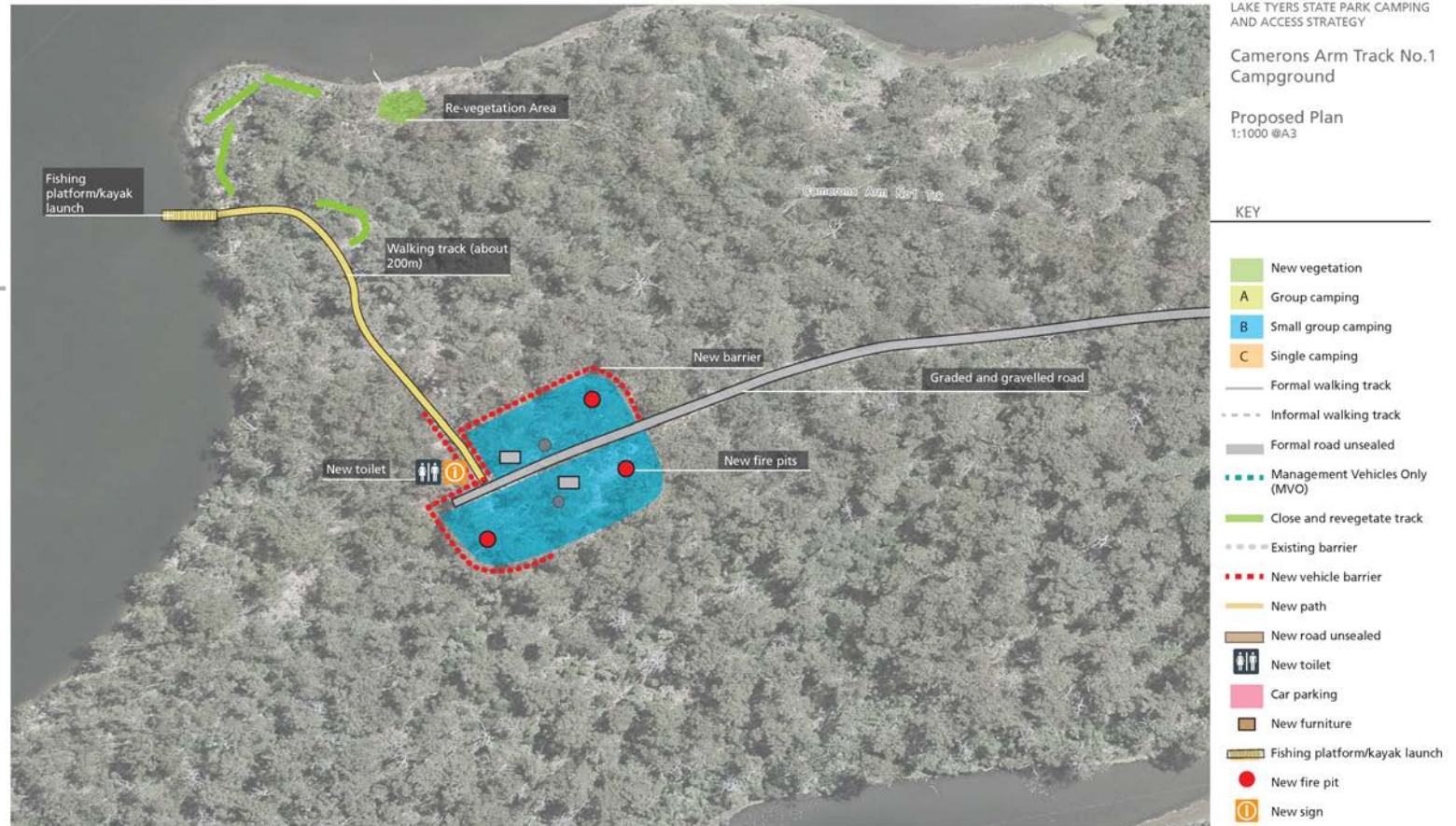
## Cameron Arm campsite upgrade

Map plan: Parks Victoria

- GLAT Trail #3
- Improved amenity at campsite for paddle in and drive in patrons
- Sustainability outcomes

### Works include:

- Toilet construction
- Paths and landscaping
- **Est. cost: \$110,500**





# WORKS PACKAGE 12

## GLAT Gateway @ Forestec

- All GLAT Trails
- Creates 'gateway' for all of GLAT
- Focus on Gunaikurnai cultural interpretation
- Improved accessibility (to Discovery Trail)
- Universal Design Principles
- Stand alone 'green/easy' cycling route

### Works include:

- Existing trail upgrades
- Signage and wayfinding
- Gateway Interpretation Forestec
- **Est. cost: \$327,000**





# WORKS PACKAGE 13

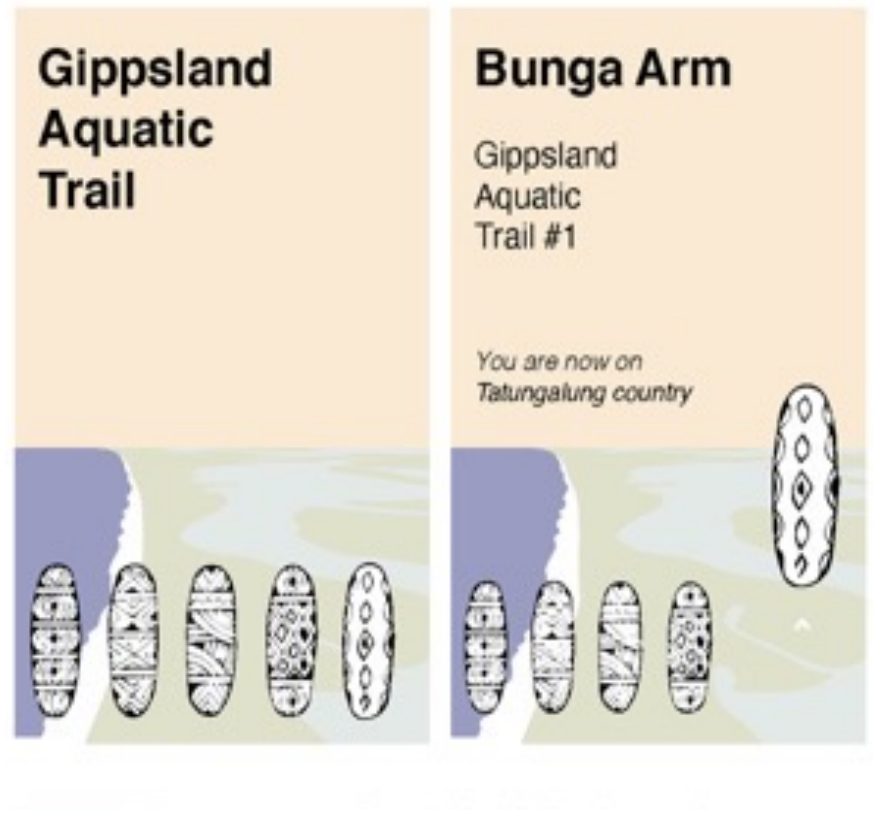
## Signage & Wayfinding Gap Analysis

- All GLAT Trails
- Finalises all waymarking
- Creates continuity across GLAT experiences
- Logical wayfinding and safety measures
- Appropriate interpretation



### Works include:

- Gap analysis
- Remaining required signage and wayfinding installed
- **Est. cost: \$130,000**





# WORKS PACKAGE 14

## Pre-trip information gap analysis & collateral

- All GLAT Trails
- Facilitates promotion and pre-trip planning
- Provides for safety and risk management
- Promotes third party services

---

### Works include:

- Information gap analysis
- Content and collateral creation
- **Est. cost: \$150,000**

