

SOMA MIDTOWN

**Practicing the
way of Jesus
together for the
life of the world**

SOMA MIDTOWN



2023 - 2024

**Annual
Ministry
Report**

**Practicing the
way of Jesus
together for the
life of the world**



**WHO WE ARE
BECOMING**

Hey Soma Church,

It's hard to put into words how refreshing it's been to get back to what feels like the first normal ministry year since 2019. I hope as you read and soak in the next few pages that you feel our profound sense of gratitude for all the generous ways you've prayed, served, and given to help us bring these realities to life.

As we're praying and dreaming about our next season, a metaphor that the Holy Spirit has recently provided me is that of trees in a forest. Throughout Scripture the embodied journey of becoming whole people is brought to life with the imagery of trees. Like humans, trees develop slowly and flourish within the context of a diverse relational ecosystem that becomes capable of sustaining life over many generations.

I believe this is the great calling and opportunity for our generation in the years to come! We hope you'll join us this year as we imagine and discover with God what it could look like to continue cultivating that kind of beautiful community at Soma.

We love you so much and are so grateful to be on this journey with you.

Peace,

Pastor Brandon
on behalf of Soma Leadership

TABLE OF CONTENTS

LOOKING BACK AT 2022 - 2023	02
Recap: Last Year's Priorities	
Vision in Action: Last Year's Fruit	
Last Year by the Numbers	
LOOKING FORWARD TO 2023 - 2024	08
"Deeper In and Further Out" & Emerging Themes	
Key Initiatives	
ANNUAL BUDGET	12
Last Year's Key Metrics (2022 - 2023)	
This Year's Budget (2023 - 2024)	
LEADERSHIP STRUCTURE	14
Elders	
Staff	
Board of Directors	



LOOKING BACK

AT 2022 - 2023

Recap

Last Year's Priorities

<p>Seek God's presence and power together</p>	<p>Enrich our community identity, commitment, & contribution</p>	<p>Justice & reconciliation</p>
<p>Created focused spaces to encounter God together:</p> <ul style="list-style-type: none"> • Annual Vision Series • Pursuit of God book study • Practicing the Way formation cohorts <p>We felt a collective, tangible sense that God blessed this desire with an increased hunger and experience of his presence in our community.</p>	<ul style="list-style-type: none"> • Fall volunteer retreat • Regular member gatherings • Preaching cohort • "Women and Men Together in Ministry" workshop with Hannah Anderson • Internally, our staff team grew with the additions of Stephanie Estes, David Haley, Cassandra Middelkamp, and Elizabeth Massaquoi. 	<p>While limited bandwidth didn't allow us the capacity to start our justice and reconciliation team, we are eager to get some traction with this focus area in the coming year. We'll begin to recruit our initial leadership team this fall.</p>

Vision in Action

Last Year's Fruit

PRACTICING THE WAY OF JESUS FORMATION

Being with Jesus, becoming like Jesus, doing what Jesus did

- Launched "Practice Cohorts" designed to build core spiritual practices into the regular rhythms of our lives
- Launched Discipleship Group Explorations to provide vision for, training for, and connection to D-Groups
- Hosted regular "Day Sabbaticals", local, day-long retreats for prayer and solitude
- Held Gender and Sexuality series for students and parents
- Engaged in weekly worship and Scripture in Soma Kids

“

Practicing the Way [practice cohorts] helps illuminate that which we leave on the table when we don't lean into the spiritual practices that Jesus emulates for us: rest, prayer, solitude, fasting, etc. It is appropriate to call it Practicing rather than Mastering so that God's Grace has the space to lead us on without any shame that comes with getting it wrong. The cohorts have helped me to better integrate my humanity against the grain of the spirit of the age that emphasizes relative individualism, which preaches you rather than your creator knows what's best for your flourishing.”

NICOLE BOZELL

Soma Arts - Advent Trinity Installation



"Women and Men Together in Ministry" workshop with Hannah Anderson



“

Soma Moms has had a huge impact on my motherhood journey! It has provided so much encouragement, wisdom & practical tips on parenting as well as walking with Jesus in the midst of raising littles. It has been such an encouragement to be in the same season as other moms, hear about what is to come from older mamas, and encourage younger moms as they are adjusting. It is something I genuinely look forward to attending and love inviting other moms to take part in!”

MONICA BROWN

**TOGETHER
COMMUNITY**

Cultivating transformative relationships marked by trust, transparency, grace, and accountability

- Launched three new MCs and numerous Discipleship Groups
- Celebrated another beautiful year of Soma Moms meeting twice a month to learn from and support each other
- Gathered overnight for a fall Volunteer Retreat for community, time with the Lord, and an epic Nerf archery fight
- Launched community building gatherings for elementary girls (and moms) and elementary boys (and dads)
- Held fall and spring retreats for Soma Students
- Enjoyed regular Members Gatherings

**FOR THE LIFE
OF THE WORLD
MISSION**

Sharing and demonstrating Jesus' love for our vulnerable neighbors through our time, resources, and relationships

- Invested needed resources in the work of PPHS, Bethany Refugee Care and Pour House through our Advent Offering
- Deepened partnership with NRN through child sponsorship and bringing a team to Nicaragua to explore future partnership opportunities
- Served the vulnerable through hosting refugee children, moving people into secure housing, Operation Christmas Child shoeboxes (Soma Students) and cards for NRN students (Soma Kids)

For metrics, see the "Last year by the numbers" section on the following page.

“

God worked [during the NRN Vision trip] to remind me of who He is. To show me beauty beyond what I could fathom before. To reignite a fire in my soul. Yet that week was just a catalyst for a transforming season of my spiritual journey. Months later, the Lord continues to work in the day to day of my life, revealing more hard ground, rocks, and weeds in my heart that had gone unnoticed and untouched for too long. I have been humbled, spiritually strengthened, emotionally moved. I have experienced a fuller depth of the Lord's grace, pleading that He continue to transform me. Asking God for more opportunities to partner with Him. Seeking a deeper relationship with Him.”

KELSEY GAUSMAN

Duffey MC Baby Shower



Spring Fling Gathering



NRN Vision Trip - Kelsey Gausman



Pour House Move-In



LOOKING BACK AT 2022 - 2023

Last year by the numbers...



194 ATTENDED
OUR GOOD
FRIDAY SERVICE



521 JOINED US
ACROSS THREE
SERVICES ON
EASTER SUNDAY



25 NEW MEMBERS
WERE COMMISSIONED
OR ARE IN PROCESS
(191 TOTAL)

350

GATHERED IN
PERSON WEEKLY
FOR WORSHIP
SERVICES



40 CHILDREN AND
PARENTS WERE
DEDICATED DURING
SUNDAY GATHERINGS

77

NEWCOMERS
ATTENDED A
SOMA DNA

40+

NEW NRN
SPONSORSHIPS

150

POUR HOUSE
MOVE INS



PROVIDED 40 PPHS
FAMILIES WITH
CHRISTMAS GIFTS

MISSIONAL COMMUNITIES

30+

NEW MC
PARTICIPANTS

250

TOTAL
PARCIPANTS

11

MCS MET
REGULARLY

32

INDIVIDUALS
PARTICIPATED IN
DAY SABBATICALS

LOOKING FORWARD

TO 2023 - 2024

Deeper In and Further Out

As our leadership team has prayed, fasted, and sought direction from the Holy Spirit, we sense an invitation to a fresh season of moving “deeper in” to life with Jesus and “further out” to the margins with Jesus.

What does that look like? Instead of rushing ahead into a premature strategic plan, we want to slow down and create space to discern where God might be inviting us into a more mature expression of “Practicing the Way of Jesus Together For the Life of the World.”

While we’re not exactly sure about the destination, we do see a pathway opening up with some emerging themes and patterns from our past that could guide us into the future.



“DEEPER IN” TO LIFE WITH JESUS

We want to wholeheartedly love and abide with Jesus in a way that creates depth, joy, and maturity even as we struggle and suffer. This will require a collective effort to lean into new formation rhythms and ministry pathways that create more consistent contexts for response and accountability.



“FURTHER OUT” TO THE MARGINS WITH JESUS

We want to go after the mission of Jesus with more intensity and maturity. This will require some new environments for sharing the gospel as well as a deeper vision of justice that begins with service but ends in biblical kinship.

Strategic simplicity in our life together

In order to go deeper in and further out with Jesus, we’ll need a commitment to a “less but better” approach to our commitments, programs, budgets, organizational structures, and relationships.

Seeding our culture to multiply leaders

In order to go deeper in and further out with Jesus, we’ll need to invest our resources into creating a bigger group of committed leaders who embody our culture.

Key Initiatives

Embodying our vision “deeper in” and “further out” this year

PRACTICING THE WAY OF JESUS FORMATION

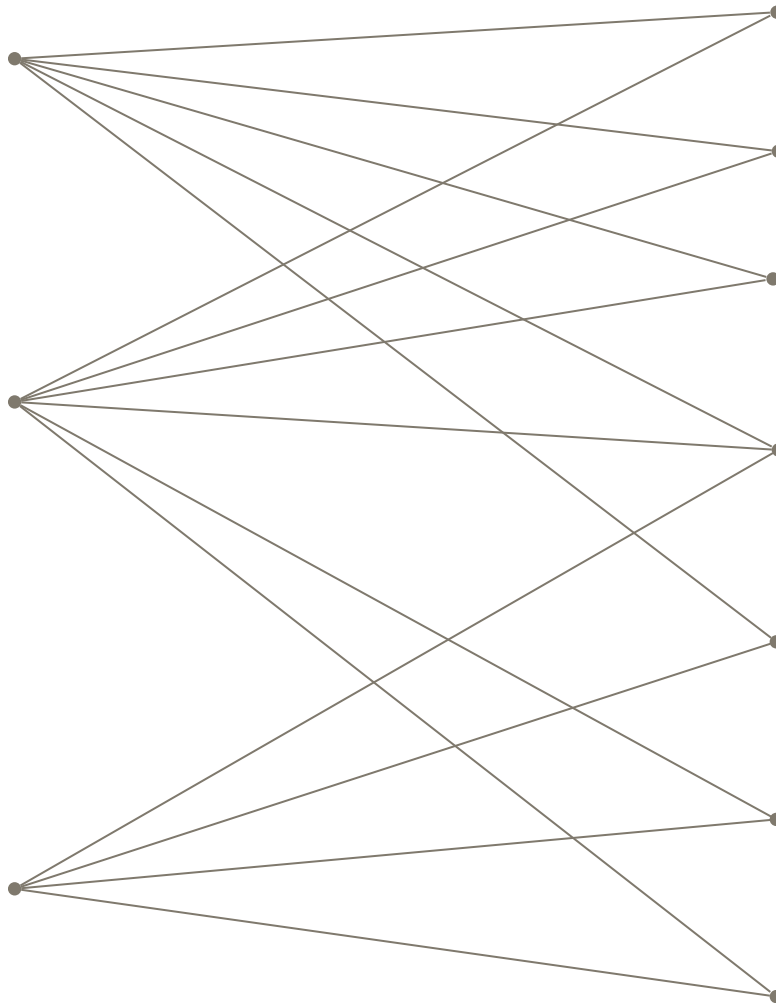
Being with Jesus, becoming like Jesus, doing what Jesus did

TOGETHER COMMUNITY

Cultivating transformative relationships marked by trust, transparency, grace, and accountability

FOR THE LIFE OF THE WORLD MISSION

Sharing and demonstrating Jesus’ love for our vulnerable neighbors through our time, resources, and relationships



Launch Expanded Community Rule of Life

Build traction towards a community-wide, practice-based Rule of Life by inviting our key leaders to join our staff and elder team in living it out.

Fall Leaders Vision Day

A one day event to cast vision for the coming year with our key leaders.

Launch Community Formation Pathway

A streamlined and focused community ecosystem with regular calendar rhythms and clear, accessible entry points.

Justice and Reconciliation Team

Create a team of members that meet regularly to help us build a clear and sustainable structure, strategy, and metrics that expand on and hold us accountable to our vision of becoming a multicultural church.

24|7 Prayer Investment Weekend

Partner with 24/7 prayer to host one of their key leaders for a weekend to invest in our staff team, key leaders, and preach on Sunday as an intentional investment in building our prayer culture.

Ministry Area Leadership Teams

Ministry area leader gatherings to invest in our volunteer leaders and open up space to co-create how to translate church-wide vision into ministry area specific initiatives.

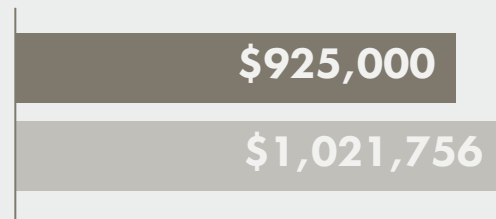
Launch Alpha

Recruit and vision a leadership team to lead the charge and activate our imagination about what hospitality-based evangelism could look like at Soma and in our time and place.

ANNUAL BUDGET

LAST YEAR'S KEY METRICS (2022 - 2023)

GIVING



10.5%
AHEAD OF
BUDGETED
GIVING

■ BUDGETED GIVING ■ ACTUAL GIVING

*does not include Advent offering or Benevolence

ADVENT OFFERING: \$58,000



RESERVES \$603,269

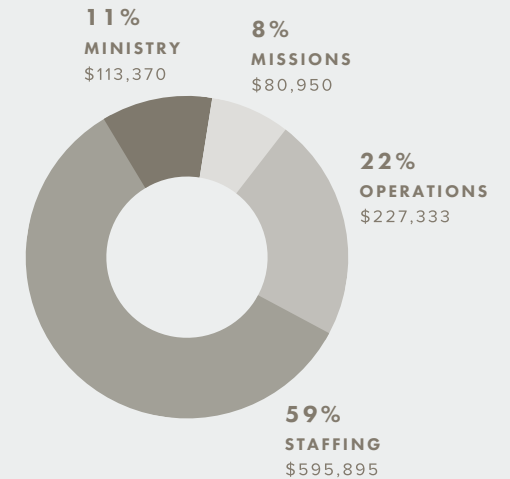
JUST UNDER 8 MONTHS
OF OPERATING EXPENSES

THIS YEAR'S BUDGET (2023-2024)

TOTAL EXPENSE
\$1,017,548

TOTAL GIVING
\$1,015,000

PROJECTED SURPLUS
-\$2,548



- **Missions Expenses** include, but are not limited to: financial support of local and global partner organizations, network support, missions trips, local and overseas missionary support, and more.
- **Operations Expenses** include, but are not limited to: mortgage, building and property maintenance, utilities, insurance, office equipment, supplies, and more.
- **Staffing Expenses** include, but are not limited to: wages, salaries, and payroll taxes for all staff and benefits.
- **Ministry Expenses** include, but are not limited to: Children's, Youth, Premarital, Music, Courses, Community, Hospitality, Events, Care and more.

LEADERSHIP STRUCTURE

AT SOMA MIDTOWN

ELDERS Our Elders provide spiritual oversight and are responsible for theological alignment and discerning church-wide vision and direction.



Torrey Mindrebo
Elder



James Pascascio
Elder



Adam Ringo
Elder



Brandon Shields
Lead Pastor, Elder

STAFF Our Staff guide their ministry areas, invest in volunteer leaders, provide care for the Soma community and oversee the day to day operations of the church.



Stephanie Estes
Director of Family Formation



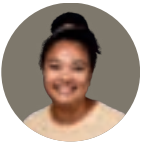
David Haley
Executive Director



Steve Jaeger
Director of Community Formation



Robin MacKinnon
Ministry Catalyst



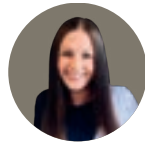
Elizabeth Massaquoi
Operations Coordinator



Miles McGuire
Director of Worship



Cassandra Middelkamp
Soma Kids Coordinator



Emily Shields
Care and Culture

BOARD OF DIRECTORS

Our Board of Directors provide organizational oversight and consultation for our staff in the areas of HR, finance, and vision architecture.



Will Claywell
Treasurer



Angie Davis
Director, Finance



David Haley



Jackie Morales
Director, HR



Torrey Mindrebo



Jackie Olson
Director, HR



Brandon Shields



Matt Waggoner
Board Chair



SOMA MIDTOWN