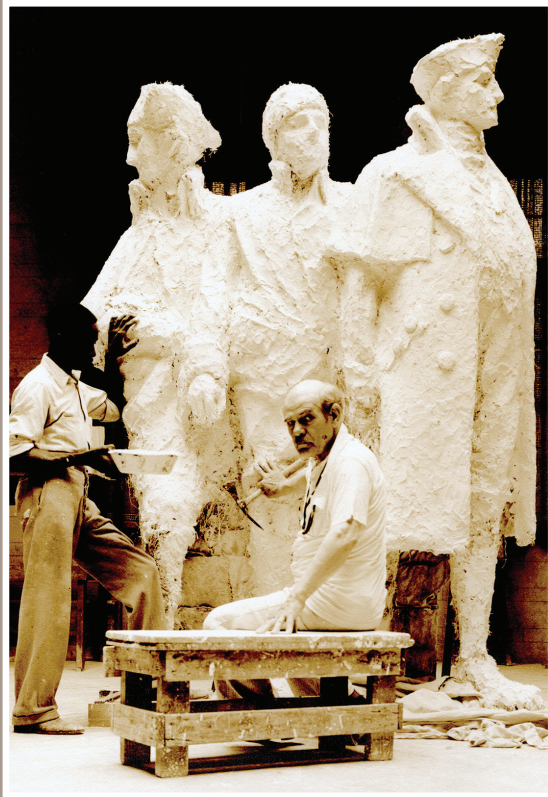


“ THAT GROUP
SHOULD HAVE BEEN
MADE OF BRONZE ”

-GUTZON BORGLUM
SEPT 27, 1938



Gutzon Borglum with assistant Charlie Johnson creating the full plaster of paris rendering in his San Antonio, TX studio, circa 1937.

LEARN MORE

Visit startwestward1787.com to learn more about the Start Westward Memorial, and to comment on the proposed conservation plan.



Start Westward Memorial Society

Directors:

Douglas Anderson: Development
David Baker: Treasurer
Johnathan Dehmlow: Secretary
Joe Grimm: President
Peggy Grimm: Vice President
Michael Johnson: Restoration & Maintenance

Meetings: Third Wednesday of every month
309 Second Street, Marietta, OH 45750

WWW.STARTWESTWARD1787.COM

Borglum Predicts “The
Start Westward” will be
unrecognizable in three
generations.

-Parkersburg Sentinel
Sept 27, 1938



Preserving the National
Memorial to the Start
Westward of the United
States for Future Generations

WWW.STARTWESTWARD1787.COM

BORGLUM'S VISION



The memorial was designed to be made of bronze, but instead was sculpted from local sandstone to stimulate employment of local workers with New Deal WPA funding.

Borglum's Original Sketch



Clay Maquette



It was also designed to face westward, but when the partially carved sculpture arrived from the sandstone quarry, Borglum decided its most favorable position was for the three standing pioneers to face the street with the boat by the river.

\$7-MILLION CONSERVATION PLAN

Muskingum Park Statue Restoration Phase

- Replace Sandstone Statue in Bronze..... 600K
 - Move Sandstone Statue to McKay Lodge for Restoration..... 240K
 - Renovate Esplanade and River Landing..... 600K
 - Installation of Bronze Statue..... 120K
- \$1.56M**

Front Street Pylon Restoration Phase

- Design and Contracting..... 17K
 - Northeast Pylon..... 56K
 - Northwest Pylon..... 57K
 - Southeast Pylon..... 99K
 - Southwest Pylon..... 80K
- \$309K**

National Memorial Visitors Center Phase

- Climate Controlled Structure..... 4M
 - Sandstone Sculpture Restoration..... 300k
 - Sandstone Sculpture Installation..... 360K
 - Perpetual Maintenance Fund..... 500K
- \$5.16M**

“Personally I think your idea of bronze is the perfect answer! Bronze is durable and what I like about it seems to promote interaction and touching. Can’t you see children climbing all over the boat pretending they are finding the wilderness? Adventurers! The Seated Lincoln statue in



Newark is a perfect example - GB wanted it set at ground level just for that reason and the governor or mayor wanted to fence it off to protect it, but GB wouldn’t allow that. Now the seat and his nose are shiny gold colored from the patina being rubbed off - because it means something to them to touch it.”

“Some years ago the Santa Fe Museum discovered a plaster bust that GB did ... [We] argued that the only reason he left anything in plaster was because no one offered to pay for the bronze! Finally they [cast it in bronze] and it’s quite handsome and now they can display it without worrying about chipping and breakage.



Robin Borglum Kennedy
January 19, 2020