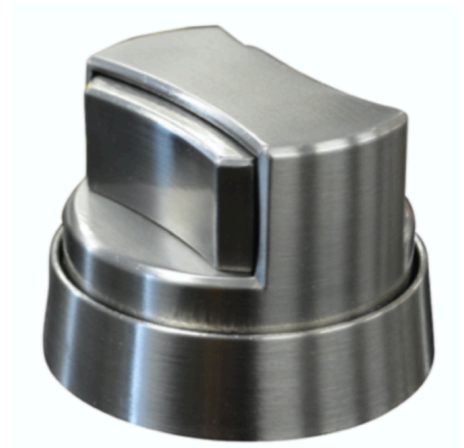




Protect Your Home & Family
With
RangeSafe Knobs™



How To Install The Insert Extension **If Needed**

We provide insert extensions with every set of RangeSafe Stove Safety Knobs™ because in some cases, the stove stem which the RangeSafe Stove Safety Knob™ attaches to is a little short for our standard insert. If the stem on your stove sticks out less than 1/2” from the front of the stove, then we suggest using the supplied insert extensions. The extension will push out the red insert by 1/4” thereby making sure the RangeSafe Knob™ will sit securely onto your stove stem.

Steps:

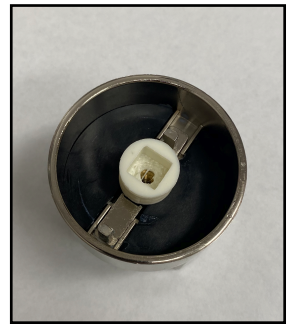
1) Turn the RangeSafe Stove Safety Knob™ so the inside of the knob is facing up, making sure not to scratch the face of the knob.



2) Using a Philips-Head screwdriver, remove the screw in the center of the insert receiver, and then take out the insert receiver.



3) Take the supplied, white insert extension and fit it into where the insert receiver previously was.



4) Push the base of the insert receiver into the square hole in the fitted insert extension.



5) Using the longer screw provided in the extension bag, reverse step 2 by screwing back in the insert receiver and the insert extension combination onto the knob.



If you are having any problems with installation, please contact us at [434-229-7401](tel:434-229-7401) or email info@rangesafe.com and we will be happy to

