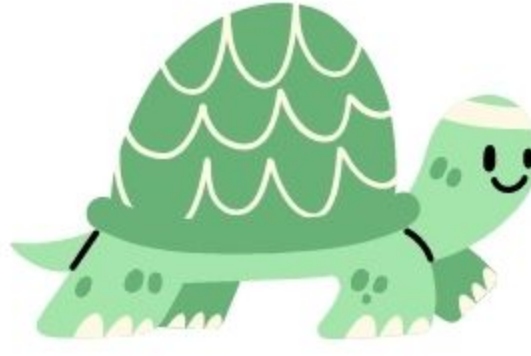


# Hibernating Animals



Ground Squirrel



Box Turtle



Bumble Bee



Bear



Land Snail



Tree Frog



Skunk



Ladybug



Garter Snake

D	N	D	G	E	B	E	A	B	H	G	K	E	S
L	O	B	R	E	U	L	A	L	B	T	T	E	A
N	B	N	O	D	M	A	R	L	O	E	A	R	O
L	L	H	U	E	B	N	E	U	X	D	T	Q	A
R	N	I	N	K	L	D	B	I	T	L	D	O	O
N	R	B	D	A	E	S	Y	L	U	U	E	O	E
N	I	E	S	N	B	N	N	Q	R	I	E	N	G
B	A	R	Q	S	E	A	T	E	T	W	B	O	U
U	E	N	U	R	E	I	U	N	L	A	R	I	B
L	T	A	I	E	G	L	B	B	E	F	E	N	Y
S	L	T	R	T	I	K	A	U	D	T	T	O	D
R	A	I	R	R	B	A	I	O	O	R	O	M	A
E	A	O	E	A	E	N	O	U	O	U	N	O	L
B	R	N	L	G	I	W	I	O	S	K	U	N	K