

**2021**

**GROUP  
RETREAT  
ESSENTIALS**



[thekineocenter.com](http://thekineocenter.com)



# WELCOME

**MISSION**  
HEALING  
AMIDST A  
HARD CALLING

Dear Retreat Leader,

Thank you for choosing the KINEO Center for your retreat! We hope you leave with a full heart and some inner renewal after your stay with us.

Please take the time to read through all of the information provided. It will help you plan well for your experience.

In order to make your retreat official, we'll need the following forms included in this packet:

- Retreat Reservation Form (filled out on Google)
- Deposit (Refundable until 30 days before Retreat)
- Copy of Liability Insurance (From Insurance Provider)

Attn: The KINEO Center  
Po Box 686  
Puerto Real, PR 00740

We look forward to collaborating with you and sharing our tropical haven with you. The team here looks forward to being with you as you find rest and rediscover truth, beauty, and goodness.

Peace,

Co-founders  
Dan & Tonya White

**SLOW DOWN  
SIT STILL  
SEEK RENEWAL**



## OUR LODGING

We are currently in an exciting renovation project that will be completed June 2021. We will have a clean, spacious, and updated lodge that host up to 16 guests. We also have an additional guest house that hosts 3. These spaces overlook the expanse of our beautiful rainforest landscape. If you need more occupancy, there are local hotels for overflow.

**Partitioned Rooms** (2 to 4 per) is 1300 sqft. A hotel style room, equipped with one private bathroom, air conditioning, cozy sitting area, outdoor porch, and a kitchenette. These rooms are on the first level and have floor to ceiling partitions that create two separate cozy rooms.

**Large Rooms** (2 to 4 per) is 1300 sqft. A hotel style room, equipped with one private bathroom, air conditioning, cozy sitting area, outdoor porch, and a kitchenette. These room are on the second floor with two queen size beds and a futon.

**Guest Suite** (3 per) is small private space with three rooms (bedroom, living room, bathroom). This space in on the other side of our property and has a modern private outdoor shower and connects to an outdoor screened in porch.

# MEAL OPTIONS



## DAILY BREAKFAST

---

Fresh fruits (mango, bananas, pineapple, parcha and more) grown on our grounds when in season. Scrambled Eggs, Bagels, Grilled Ham, and Granola all sourced from local farms on the east coast of our island. Don't forget the delicious freshly ground Puerto Rican Roast coffee from our friends Gusto's in San Juan.

**GROUP RATES AVAILABLE**

## COMMUNAL KITCHEN

We have an outdoor kitchen with a full-size refrigerator, grill, stove, and sink for use for group cooking. It is fully stocked with kitchen cookware. Feel free to make dinner, lunch, or whatever goodies you'd like for your group.





# AMENITIES

## INGROUND POOL



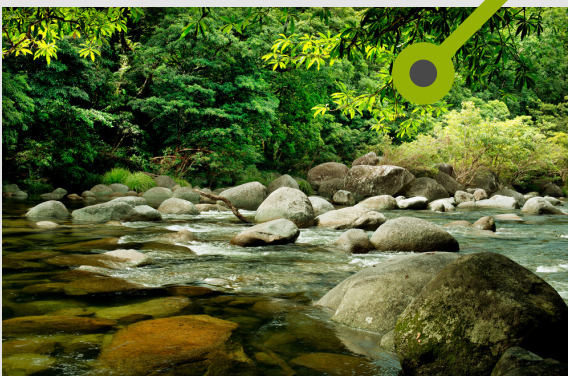
A crystal clear inground pool, outdoor gazebos, and a pool house make outdoor life comfortable. Deck chairs and comfortable seating surround the pool.

## OUTDOOR MEETING SPACE

In the midst of being built, we will have a screened in outdoor meeting room great for workshops and group sessions. With seating for 40 and equipped with all your tech needs.



## RAINFOREST



We don't like calling El Yunque Rainforest an amenity. But it is a treasure on our property. It is the only subtropical rainforest in the U.S. It's a wonderful place to walk, hike, sit, contemplate, and even swim.

# NAGUABO



The Kineo Center is on the east coast of Puerto Rico. We are a 60 min drive from the airport in San Juan. We are located on the side of Pico del Este Mountain with a view of the Caribbean Sea.

Our property offers the beauty of the rainforest in all its glory with native flora and fauna along Rio Santiago to explore during the day and the sound of the coqui to sing you to sleep at night.

## TRIPS & TRANSPORTATION

A rental car is the most economical form of transportation to move about in PR. Neither Uber or Lyft operate outside San Juan.

Some of the most beautiful beaches in the world are 10 to 15 mins away. Snorkeling, surfing, & boat trips are available. Tour a Coffee Farm. Visit Old San Juan or the Natural Waterslides at El Yunque. Take a night Kayaking trip at a Bioluminescent Bay. If you'd like assistance in planning day trips, we'd love to help.



# ADD-ONS

explore and enjoy



## CATERED DINNER

Enjoy a traditional Puerto Rican meal cooked live by our dear Chef Irving. You'll never forget the flavors.

[Ask For Group Rates](#)



## TRANSPORT YOUR GROUP

We'll shuttle your group to and from the airport. We'll also transport your group once a day wherever you'd like.

[Ask For Group Rates](#)



## GROUP YOGA SESSION

We will have one of our local instructors guide a group yoga session in the Rainforest - stretch, breathe, be present.

[Ask For Group Rates](#)



## CHILD CARE

One of our local Childcare workers will care for your child (ages 2 to 10). We can arrange this for 2 hour blocks.

[Ask For Group Rates](#)

## KINEO CURATED RETREAT

This Retreat is facilitated by the The KINEO Center Team and Partners.



**3 Sessions** will be organized exploring Pain and Possibilities. How do we find renewal when we feel burned out? How do we discover Christ below the surface of our hurt? How do process the expectations that have been projected onto us? A transformational experience will be curated with teaching sessions, worship, reflection space, and interactive processing using effective learning modalities.

Dan White Jr. (author of Love Over Fear) & Tonya Variya (certified Enneagram Coach Madanes Institute) would treasure customizing a retreat for your group's unique emotional, vocational, and spiritual needs.

**For Retreat Groups: \$1700**

# COST STRUCTURE



## Optional Room & Group Rates

**\$159**

**Room Rate per Night** (max capacity is 4 per room)

5 Rooms for 4 Nights = \$3000

5 Rooms for 3 Nights = \$2400

**+ Daily Breakfast**

4 Mornings Group Rate = \$600

3 Mornings Group Rate = \$450

**+ Live Catered Dinner**

2 Dinners Group Rate = \$800

1 Dinner Group Rate = \$400

**+ Retreat Group Transport**

Retreat Shuttle for 4 Days = \$600

**+ Curated Renewal Retreat**

Teaching/Facilitation/Reflection = \$1700

**ANY QUESTIONS? ASK TONYA: KINEOCENTER@GMAIL.COM**



# RETREAT LEADER CHECKLIST



## WHEN YOU RECEIVE THIS DOCUMENT

Ask Any Questions  
Fill Out Google Form (Dates & Needs)  
\$1500 Deposit (Refundable Until 30 Days Before)



## WHEN YOU RECEIVE YOUR ESTIMATED COST

Read Contract, Sign, and Email back to:  
kineocenter@gmail.com  
If Opting for a Curated Retreat, Schedule Call w/ Dan White Jr.  
\$1500 Deposit (Refundable Until 30 Days Before)



## WHEN YOU'RE 90 DAYS OUT

Purchase Flight Tickets to San Juan Airport (SJU)  
Send Arrival/Departure Times to: kineocenter@gmail.com



## WHEN YOU'RE 30 DAYS OUT

Finalize Retreat Schedule with Tonya @  
kineocenter@gmail.com Finalize Technology and Travel Needs  
Finalize Number of Participants and Room Assignments  
Review Stay instructions (Arrival, Rules, & Communication)



## WHEN YOU ARRIVE

Check in with Tonya (Receive Room Codes).  
Receive Tour of KINEO Center  
Make Last Minute Adjustments to Schedule