

142.89 Acre Yellow Medicine County Land Auction

Owner: Steven Ness

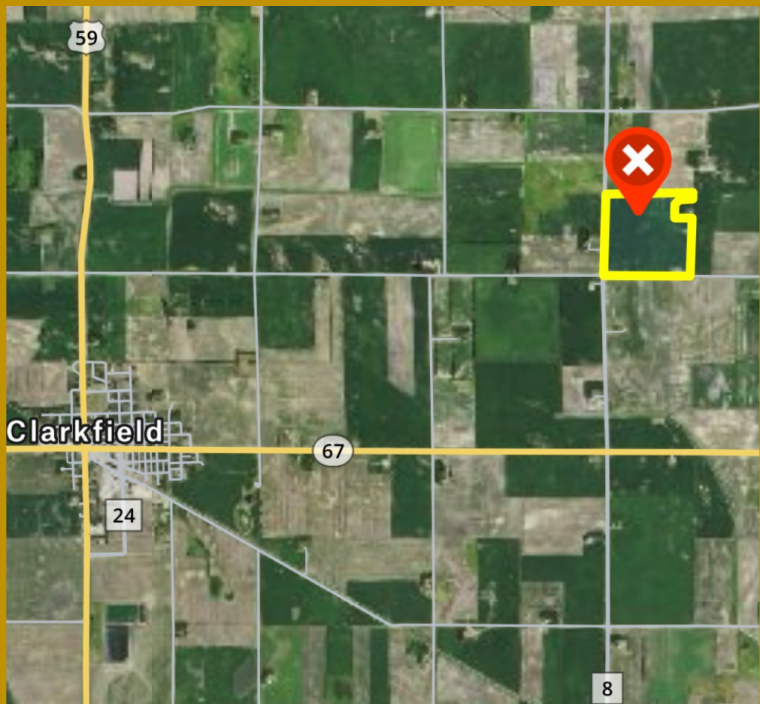
Date: Tuesday, September 17, 2024. 10:00 A.M.

Property Description: 142.86 deeded acres located in Section 36, Lisbon Twp, Yellow Medicine County, MN.



Location: On-site, 280th Ave (south side of farm). Appx. 3 mi east and 1 mi north of Clarkfield, MN.

Auctioneers Note: Deutz Auctions will be selling 142.89 deeded acres of quality farmland in one tract. The farm is located 3 miles east and 1 mile north of Clarkfield, MN and holds a CPI rating of 90.6. This will be a live auction held on-site. No buyer's premium charged; all are welcome. Establish credit with auctioneers prior to sale day. Contact auctioneer, Troy Deutz at (507) 828-5461 with any questions. Visit our website www.deutzauctions.com for full details and information packet.



Terms: 15% down payment due sale day, remaining balance due at closing November 1, 2024. Possession will take place after 2024 crops are removed. Tillage will be the responsibility of the new buyer. All 2024 taxes will be paid by sellers. Announcements on sale day are final.

Closing Attorney: Paul Goode, Marshall, MN.

DEUTZAUCTIONS.COM for more information & upcoming auctions!



Licensed Auctioneers: Tim, Chuck, Troy, & Jordan - LIC# 42-21-008
Phone: 507-530-1141 *All phone numbers listed on our website

