



I'M DISHEARTENED BY THE LACK OF EMPATHY AND COMPASSION FROM MY EMPLOYER.

IT MAKES ME WONDER IF THEY REMEMBER WE ARE REAL PEOPLE.



THIS IS HAVING A HUGE IMPACT ON MY WELLBEING

AND MAKING ME QUESTION WHETHER MY LOVE OF TEACHING IS ENOUGH TO KEEP ME IN THE PROFESSION.



STAFF IN CATHOLIC EDUCATION HAVE HAD ENOUGH!

IT'S TIME TO STEP UP OUR ACTION TO GET A NEW AGREEMENT COMPLETED!

FIND OUT MORE AND GET INVOLVED





VOTE YES!

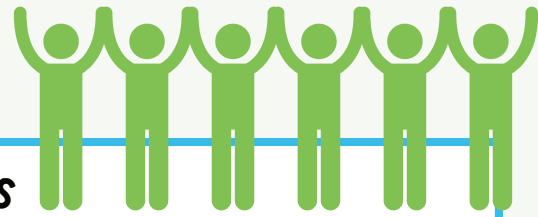
The Tasmanian Catholic Education Office has been dragging its feet in negotiations for a new agreement for over two years. Not only have they refused to bargain with us in good faith but they are attempting to push through demands that would be disastrous for staff, such as forcible transfers between schools. Enough is enough. It's time to vote Yes to give us the option of taking protected industrial action to get the deal done.

PABO - VOTE YES!

The IEU will shortly apply for a protected action ballot order (PABO) from the Fair Work Commission. A PABO is a secret ballot that allows IEU members to vote on *whether they want the option* to take protected industrial action.



WATCH OUR PABO EXPLAINER VIDEO, WHICH EXPLAINS EVERYTHING YOU NEED TO KNOW ABOUT THE PROCESS.



WHAT IS INDUSTRIAL ACTION?

Industrial action is a term commonly used to describe any form of protest, work stoppage, or strike undertaken by employees in an attempt to improve their working conditions or wages. Some examples of industrial action include:

- Going on strike
- Slowdowns
- Refusal to perform certain work, such as extra-curricular or additional hours or work



WATCH THIS VIDEO FROM WHEN IEU MEMBERS IN TASMANIAN CATHOLIC EDUCATION TOOK INDUSTRIAL ACTION IN 2014/15.



UNREASONABLE CLAIMS FROM THE TCEO

- The ability to forcibly transfer staff between schools
- Extending the school year
- Re-writing important hard-won clauses such as the scope of Consultative Committees



VISIT OUR TASMANIAN CATHOLIC BARGAINING WEBPAGE FOR MORE INFO ABOUT WHAT WE ARE FIGHTING FOR.

WHAT NEXT?

Only IEU members will be able to take industrial action if there is a Yes vote for the PABO – so make sure you tell anyone who is passionate about this campaign but is not a member to



JOIN THE UNION!



All IEU members who want to vote in the PABO must have accurate contact details. Go to Member Access to make sure you are listed in the appropriate fee category etc.



ALREADY A MEMBER?