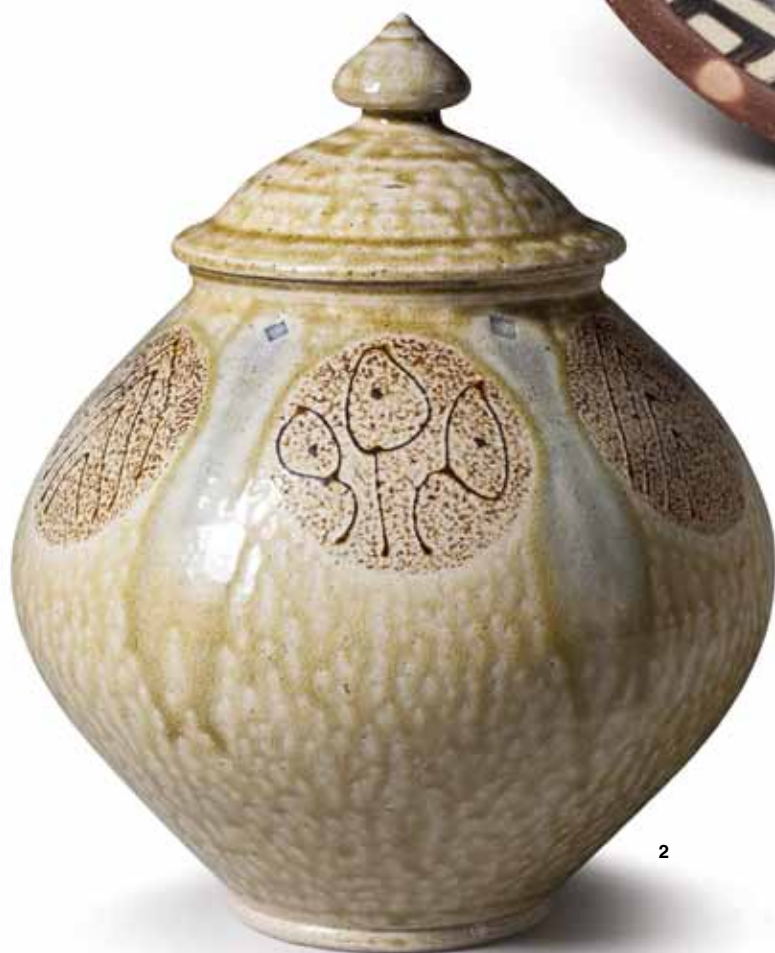


exposure

for complete calendar listings
see www.ceramicsmonthly.org





1 Matt Jones' platter, 17 in. (43 cm) in diameter, wood-fired stoneware.
 2 Mark Hewitt's *Pale Storage Jar*, 11 in. (28 cm) in height, stoneware. "Greetings from North Carolina!" at Santa Fe Clay (www.santafeclay.com), in Santa Fe, New Mexico, through November 8. 3 Stacy Snyder's pitcher, 12 in. (30 cm) in height, red stoneware, decal, enamel, multiple firings in an electric kiln, 2014. Photo: Greg Staley. 4 Dan Finnegan's *Tulip Vase*, 14 in. (36 cm) in height, stoneware, crackle slip, wood-ash glaze, salt glazed, wood fired, 2014. 5 Bandana Pottery's (Naomi Dalglish and Michael Hunt) pitcher, 12 in. (30 cm) in height, local clay, wood fired, 2014. 6 Michael Kline's platter, 16 in. (41 cm) in diameter, wheel-thrown stoneware, wax-resist decoration, melted bottle glass, copper glaze, salt glazed, wood fired, 2012. Photo: Tim Barnwell. "Pottery on the Hill," at Hill Center Galleries (www.potteryonthehilldc.com), in Washington, DC, through November 2.

exposure



1 Lauren Gallaspy's *Bling Ring 1*, 4 in. (10 cm) in height, porcelain, glaze, china paints, 2014. 2 Trent Burkett's *yunomi*, 3½ in. (9 cm) in height, porcelain, glaze, china paint, 2014. "Talk to Me: Cups that Communicate," Signature Shop and Gallery, (www.thesignatureshop.com), in Atlanta, Georgia, November 8–29. 3 Robin DuPont's latte cups, 5 in. (13 cm) in height, porcelain, soda fired, 2013. 4 Robin DuPont's chocolate pot, 7 in. (18 cm) in height, stoneware, soda fired. 5 Sarah Pike's *Cream and Sugar*, 7 in. (18 cm) in height, stoneware, oxidation fired. "Caffeine," at Discovery Gallery, Alberta Craft Council (www.albertacraft.ab.ca/discovery-gallery), in Edmonton, Alberta, Canada, through November 29, 2014.





6 Diana Farfán's *Top-Heavy*, 28 in. (71 cm) in height, white stoneware, glazes, fired to cone 6 in oxidation, mixed media, 2014. "Bread and Circus Sculpture by Diana Farfán," at Rebecca Randall Bryan Art Gallery (www.coastal.edu/bryanartgallery), in Conway, South Carolina, through November 24. 7 Lisa Marie Barber's *Yellow Hearted Woman*, 4 ft. 2 in. (1.3 m) in height, ceramic. Photo: Don Lintner. 8 Jocelyn Braxton Armstrong's *Mother and Child*, 22 in. (56 cm) in height, porcelainous stoneware, black slip. 9 Claudia Olds Goldie's *Navigating a Dream*, 20 in. (51 cm) in height, stoneware, wood, graphite pencil drawing. Photo: Will Howcroft. 10 Zhanna Martin's *There is Somebody for Everybody...*, 16 in. (41 cm) in height, clay, acrylic. "Looking at Ourselves: Contemporary Figure," at Baltimore Clayworks (www.baltimoreclayworks.org) in Baltimore, Maryland, through November 15.



exposure



1



3



5



2



4



6



7

1 Nicholas Oh's *Teapot #4*, 6 in. (15 cm) in height, porcelain, fired in oxidation to cone 6.
 2 Victoria Claire Dawes' set of platters, 36 in. (91 cm) in height (installed), earthenware, fired to cone 3 in an electric kiln.
 3 Jeremy Lee Wallace's serving platter, 15 in. (38 cm) in diameter, stoneware, wood fired to cone 13 in a train kiln.
 4 Dganit Moreno's sugar and creamer, 11 in. (28 cm) in length, stoneware, fired in oxidation to cone 10.
 5 Kyle Johns' *Double Stacked Vase*, 7½ in. (19 cm) in height, porcelain, fired in reduction to cone 10.
 6 Justin Keith Lambert's pitcher set with cups, 11 in. (28 cm) in height, porcelain blend, wood fired to cone 12 in an anagama kiln.
 7 Michael Anthony Lentini's small serving bowl, 5¾ in. (15 cm) in diameter, porcelain, fired to cone 10 in an electric kiln. "22nd Annual Strictly Functional Pottery National," at Kevin Lehman's Pottery (www.strictlyfunctionalpottery.net) in Lancaster, Pennsylvania, through November 1.

Potter's Choice

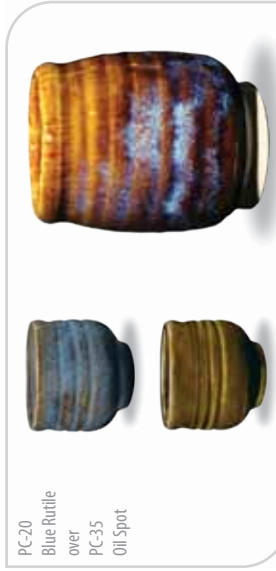
Cone 5-6 Layering



PC-4
Palladium
over
PC-35
Oil Spot



PC-12
Blue
Midnight
over
PC-35
Oil Spot



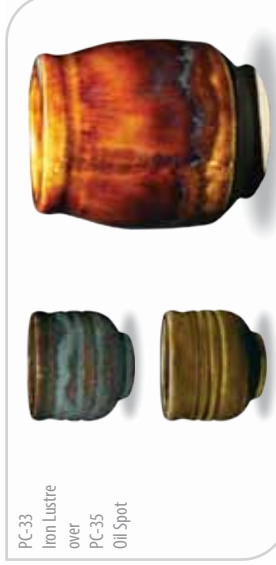
PC-20
Blue Rutile
over
PC-35
Oil Spot



PC-28
Frosted
Turquoise
over
PC-35
Oil Spot



PC-31
Oatmeal
over
PC-35
Oil Spot



PC-33
Iron Lustre
over
PC-35
Oil Spot



PC-36
Ironstone
over
PC-35
Oil Spot



PC-42
Seaweed
over
PC-35
Oil Spot



PC-43
Toasted Sage
over
PC-35
Oil Spot



PC-49
Frosted
Melon
over
PC-35
Oil Spot



PC-57
Smokey
Merlot
over
PC-35
Oil Spot

over
PC-35
Oil Spot

Clay: AMACO® Buff Stoneware No. 46

PC-35 Layering Notes: Brush on two layers of base coat. Brush on one layer of top coat. (Let dry between coats.)

www.layeringpcs.info



Join the conversation
www.facebook.com/groups/potterschoiceex

Conforms to ASTM D-4236

exposure



1



2



3



4



5



6

1 Les Miley's *Wabash Contours XI*, 12 in. (53 cm) in diameter, stoneware, salt fired, 1991. 2 David Gamble's platter, 21 in. (53 cm) in diameter, terra cotta, red glaze with blue brush strokes, 2004. 3 John Goodheart's *The All-wise Bourbon Bottle*, 15 in. (38 cm) in height, clay, metal, wood, rubber, 2001. 1-3: Photo: Scott Frankenberger. "Indiana Ceramics Celebration," at the Haan Mansion Museum of Indiana Art (www.haanmuseum.org) in Lafayette, Indiana, November 1-2. 4 Ken Price's cup, 3½ in. (9 cm) in height, glazed ceramic, ca. 1977-79. Courtesy of The Estate of Ken Price. 5 Sugimoto Sadamitsu's *Iga Mizusashi*, 8¼ in. (21 cm) in height, stoneware. 6 Georges Jeanclos' *Couple Dormeur*, 18 in. (46 cm) in length, terra cotta. 4-6: Photo: Gabriel Seri. Courtesy of Frank Lloyd Gallery. Three exhibitions ("Ken Price," "Japanese Ceramics," and "Georges Jeanclos") at Frank Lloyd Gallery (www.franklloydgallery.com) in Santa Monica, California, through November 1.