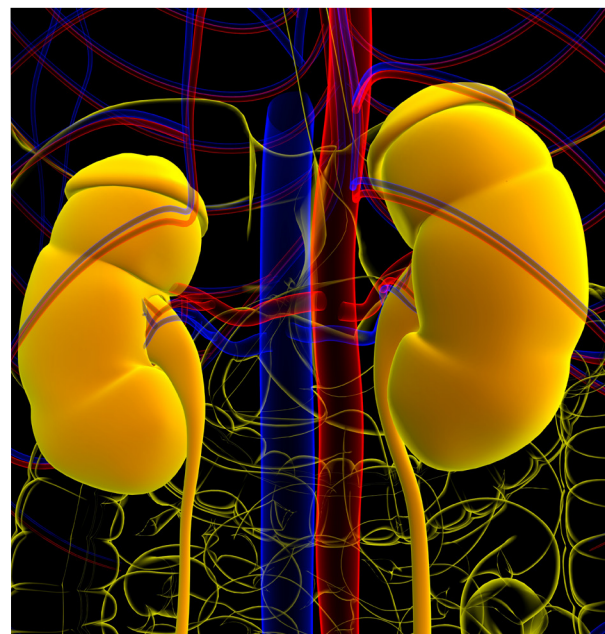


Inpatient Nephrology

Teledigm Health, in partnership with Bryan Telemedicine, sets the industry standard in telemedicine, providing a deep bench of clinical staffing resources and technical support with a focus on innovation and sustainability.

Caring for Hospitalized Patients with Nephrology Needs, Including Dialysis

- Consults and follow-up management for acute kidney injury, chronic kidney disease, end stage kidney disease and dialysis management, electrolyte disorders, volume overload and diuretic management, bone mineral disease, anemia, hypertension, cystic kidney diseases, hereditary kidney disease, nephrolithiasis, glomerular disease, geriatric and palliative nephrology
- Timely, in-depth nephrology care access 7 days a week from a team of personable, high-quality board certified nephrologists with experience in multiple care settings
- Workflow development around your dialysis program; including collaboration with local dialysis nurses and assistance with inpatient protocols and order sets based on best practices
- Increase ancillary services revenue, including laboratory, pathology, and radiology services
- Ongoing medical staff engagement, meetings and care coordination
- Various program options and coverage options to meet the needs of any facility and community



Reduce Patient Transfers

Our telemedicine programs have proven to reduce patient transfers by up to 70%.

Hospital Challenges

- Specialist shortages and associated recruitment challenges
- Limited ability to provide care for patients with dialysis needs
- Limiting outmigration of patients
- 24/7 access for patients experiencing acute kidney disease

We're with you every step of the way, partnering for the future

Teledigm Health and Bryan Telemedicine offer the region's most trusted medical partners to provide telemedicine, inpatient and specialty consultations as well as specialized medical support services.

As you explore ways to enhance care to your community, we are here to work with you offering:

- Evidence-based, best practice medical consultations and care
- Personable, patient focused physicians and health care professionals to provide the best possible communication, trust and care
- Flexibility to fit your needs
- Secure, HIPAA compliant, reliable and easy-to-use video/audio telemedicine equipment
- Cost effective solutions for physician coverage and service expansion opportunities

Learn More

Together we can provide innovative, personalized solutions to benefit your community.

Services Available to You

Experienced, board-certified health care providers offer:

Acute services in:

- Cardiology
- Hospitalist
- Infectious Disease
- Mental Health Emergency Department Assessments
- Nephrology
- Neurology & Stroke
- Nutrition & Dietary Services
- Pulmonary/Critical Care
- Psychiatry
- Speech Therapy

Outpatient clinics for:

- Counseling
- Dermatology
- Endocrinology
- Gastroenterology
- Internal Medicine
- Nephrology
- Neurology
- Psychiatry
- Pulmonology
- Rheumatology
- Others

Additional services include:

- Infectious Disease physician-led Antibiotic Stewardship
- Pharmacy support for medication review to comply with Federal and State regulations
- Dietary program support consultants
- Medical staff peer review support
- Information Technology

