

PARKS, RECREATION AND OPEN SPACE MASTER PLAN

Parks and Recreation Commission

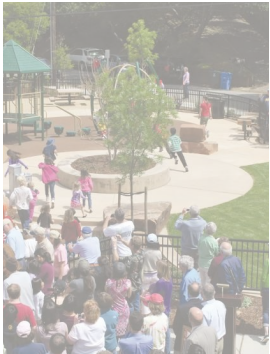
February 3, 2021



AGENDA

Purpose: Update Commission on Efforts to date and solicit input on project expectations

- 1. Project Overview**
- 2. Efforts to Date**
- 3. Desired Outcomes**



INTRODUCTIONS

Gates + Associates

Linda Gates
Casey Case
Melonie
O'Sullivan

PROS Committee

Avery Lyford
Karl Mittelstadt
Craig Michaels
Abby Sanders
Brigitte Shearer
Daniel Ourtiague
George Brunson

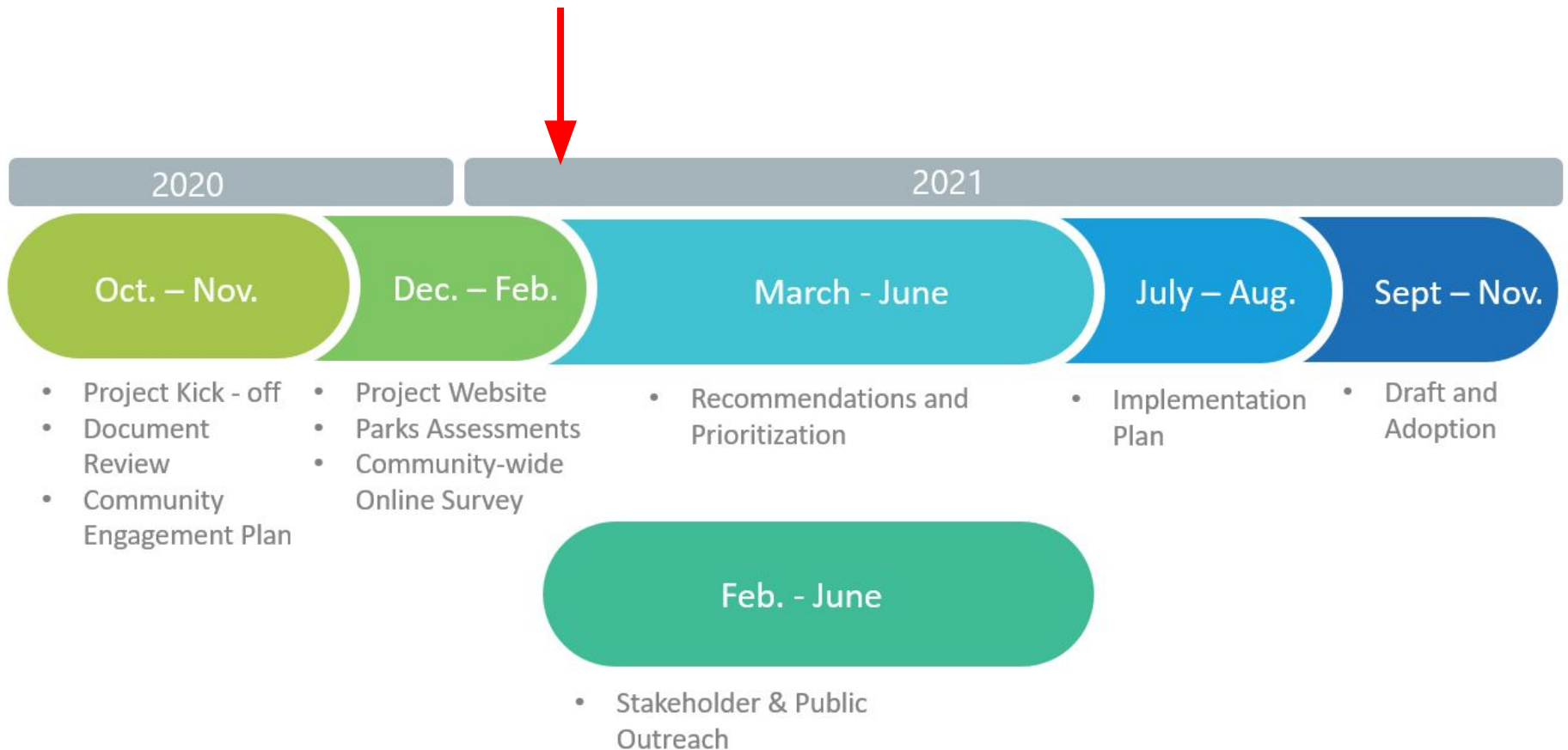
Advisory Committee

PURPOSE

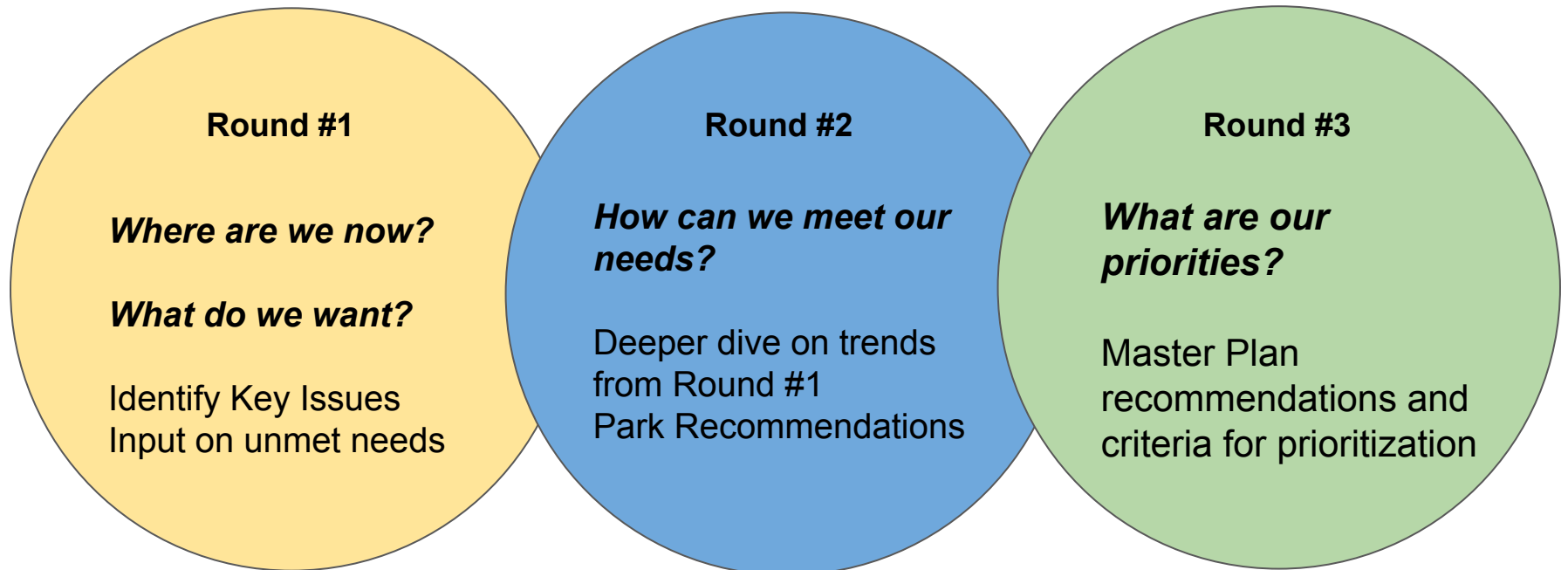
Purpose of the Master Plan

Set the **framework** for decision makers in the planning, maintenance, development, and or rehabilitation of Belmont's Parks and open space system for a **15 year horizon**.

PROCESS



PROCESS: **OUTREACH STRATEGY**



PROCESS: **OUTREACH EVENTS**

- **Project Website**
- **Advisory Committee Meetings** *(4 Total)*
- **Community-Wide Survey**
- **Stakeholder Focus Group Meetings** *(6 Total) - User Group or Topic*
(Open Space, Teens, etc., ...)
- **Neighborhood Meetings** *(6 Total)*
- **Community Pop Up Events** *(3 Total)*
- **Community Workshops** *(2 Total)*
- **Parks and Recreation Committee Presentation** *(4 Total)*
- **Planning Commission Meeting**
- **City Council Presentation** *(3 Total)*

PROCESS: **OUTREACH**

Outreach to date:

- **Brand (Logo/Tagline)**
- **Project Website**
- **Identify Community Enhancers**
- **Selected Our Channels**
- **Began Our Questions for Round #1
Survey**

PROCESS: **COMMUNITY OUTREACH**

BelmontPROSPlan.com



PROCESS: **COMMUNITY AWARENESS**



Leveraging Existing Channels

- Social Media
- Banner on City Website
- E Newsletter
- Postcard Mailers/Sheets in Activity Kits
- Signs in Parks/Trails
- Existing Email Lists (Twin Pines, Barrett Master Plan, Etc.)
- School Newsletters
- Newspapers
- Neighborhood association, clubs, groups

ADVISORY COMMITTEE: Criteria Matrix Sample

- Geographic
- Demographics
- Special Interests
- Vested Partners

SURVEY TOPICS

- Age of respondee
- Resident/ Non-Resident
- Frequency of use
- Which outdoor space used most frequently
- Reasons for use
- Barriers to use
- What do you like about the PROS
- What type of amenities would you like to see added?
- Which outdoor programs would you like to see added?
- Which community values should be reflected in the park system?
- Priorities for the PROS master plan
- Additional thoughts
- Email address to subscribe to newsletter

ONLINE SURVEY AWARENESS

Round #1 Survey Participation Boosters

Presentations to the Community

City Council

Planning Commission

Youth Advisory Committee

VOICES - Youth Volunteer group

Rotary

Neighborhood Associations

Others?

Community Enhancers

Schoolforce

Youth sports leagues

Chamber of Commerce

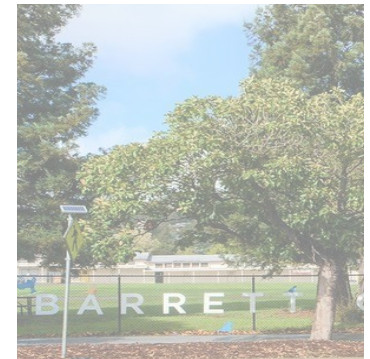
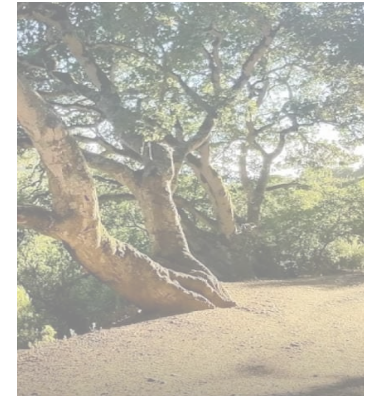
Faith based organizations

Others?

Presentations will be virtual until
in-person gatherings are permitted

HONOR THE PAST

- 2001 Athletic Field Master Plan
- 2018 ADA Transition Plan
- Parks, Recreation & Open Space element of General Plan
- Twin Pines & Barrett Master Plans & community outreach summaries
- San Juan Hills Area Plan
- Belmont Village Specific Plan
- Climate Action Plan
- Community Center Conceptual Design Report
- Green Infrastructure Design Guide
- 1998 Open Space Trail Master Plan
- 1992 Parks and Open Space Master Plan
- Park Improvement Impact Fee Nexus Study Draft
- Parcel Maps for Water Dog Lake and San Juan Canyon
- Belmont and School Joint Use Agreement
- Western Hills Area Plan
- GIS Maps of Parks



GUIDING PRINCIPLES

- **General Plan**

- Community character
- Easy mobility
- Natural beauty
- Thriving culture
- Parks create sense of community and quality of life
- Harmony with land use policies and the Circulation Element

- **PROS Master Plan RFP**

- Sustainability
- Inclusion
- Environmental stewardship
- Fire safety
- Preservation
- Historical and cultural character

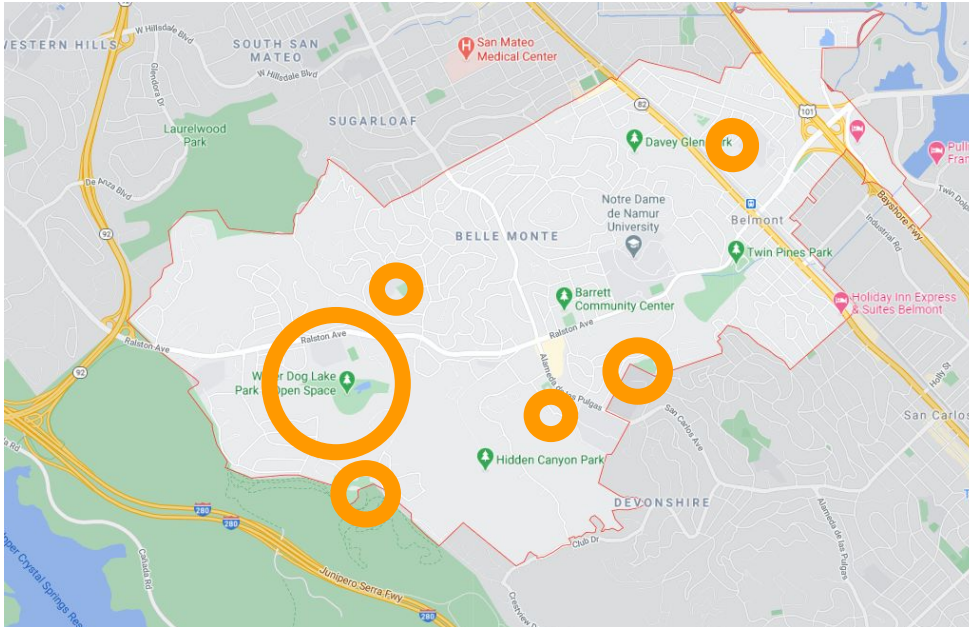
- **Other Objectives**

- Consider the mature park system, evolving (not growing) demographics and address specific challenges
- Reimagine the park system with evolving use patterns, emerging trends, embraces technology
- Focus investment on public / private collaboration, revenue generating operations and maximizing public benefit/return with a clear action plan

BENCHMARKING

Benchmarking of 3 comparable Cities

- *San Carlos*
- *Foster City*
- *Burlingame*



City Staff Park Usage Study

- **Open Space** – *Waterdog*
- **Community Parks** – *McDougal Park & Athletic Fields, Belameda Park*
- **Neighborhood Parks** – *Cipriani, Alexander Park, Hallmark Park*

EXISTING SITE ASSESSMENT

PARKS INVENTORY

PARKS INVENTORY



ALEXANDER PARK

400 Block of Yorkshire
 Type: Group C
 Size: 1.3 Acre
 Constructed:

PARK OVERVIEW

Alexander Park is a high use park within a residential neighborhood adjacent to Yorkshire Way. The park's entrance is framed by a metal trellis which establishes the park well within the surrounding neighborhood context. A concrete walk encompasses the lawn area leading to a picnic area. On site, there are two play structures, two tennis courts, a handball court, a large lawn area, half-court basketball, picnic area, new pre-fab restroom, and two horseshoe pits. Parking is limited.

EXISTING CONDITIONS

Accessibility:

- No ADA accessible benches, picnic tables. Concrete looks non-compliant in some areas.

Furnishings:

- Wood benches are in fair condition.
- Picnic tables in fair condition, BBQ in poor condition.
- Restroom is new and in good condition.
- Horseshoe pits are in poor condition and underutilized.
- Tennis courts in fair condition.

Landscape:

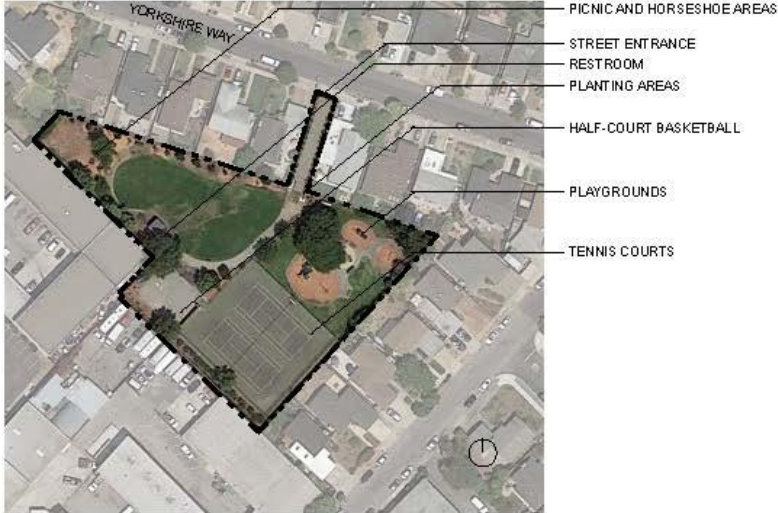
- Lawn is in fair condition.
- Trees around perimeter of site are in fair condition.
- Planting areas are bare.
- Pear trees near playground have deep crotches and problematic leaders.
- Ivy needs removal by picnic areas.
- Large oak needs removal.
- Planting near entrance in good condition.



EXISTING SITE CONDITIONS



PARK MAP



DESIRED OUTCOMES

