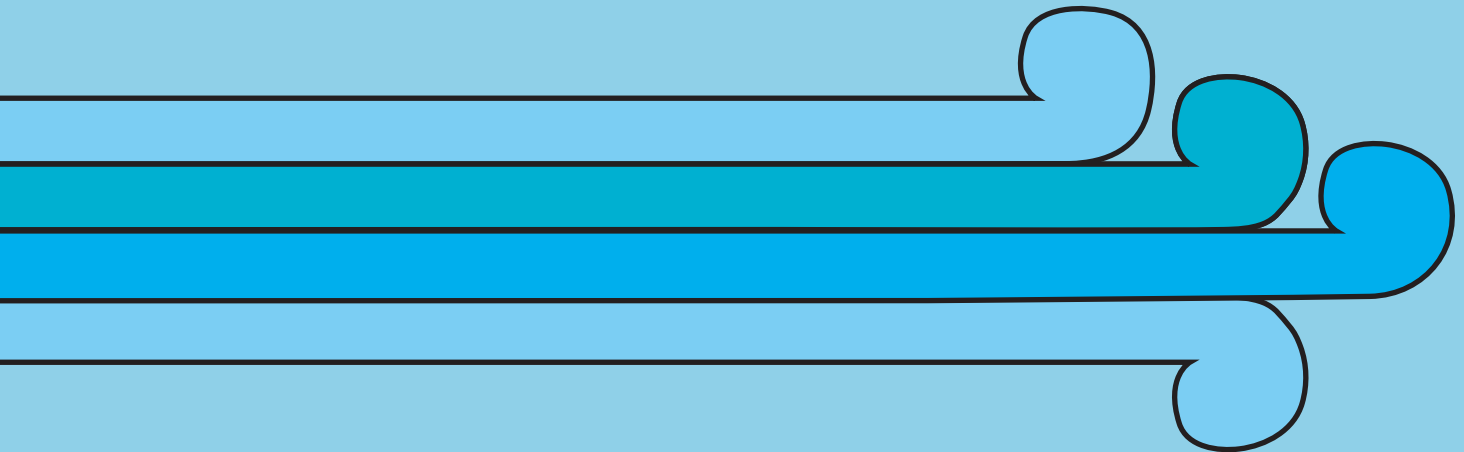


TUIA
MĀTAURANGA
PUKAPUKA MAHI // ACTIVITY BOOK
junior



View the poster through the tuia education App.
It brings the poster to life!

This is a AR experience.

Look for the Tuia Mātauranga App at the App store and
download.



KIA ORA I'm Kuaka the Explorer.

Way back, Pacific peoples followed me all the way
to Aotearoa New Zealand. I know my way around, all right!

Come with me on a new adventure and find out what makes you, you.

Find me in the Tuia Mātauranga truck.

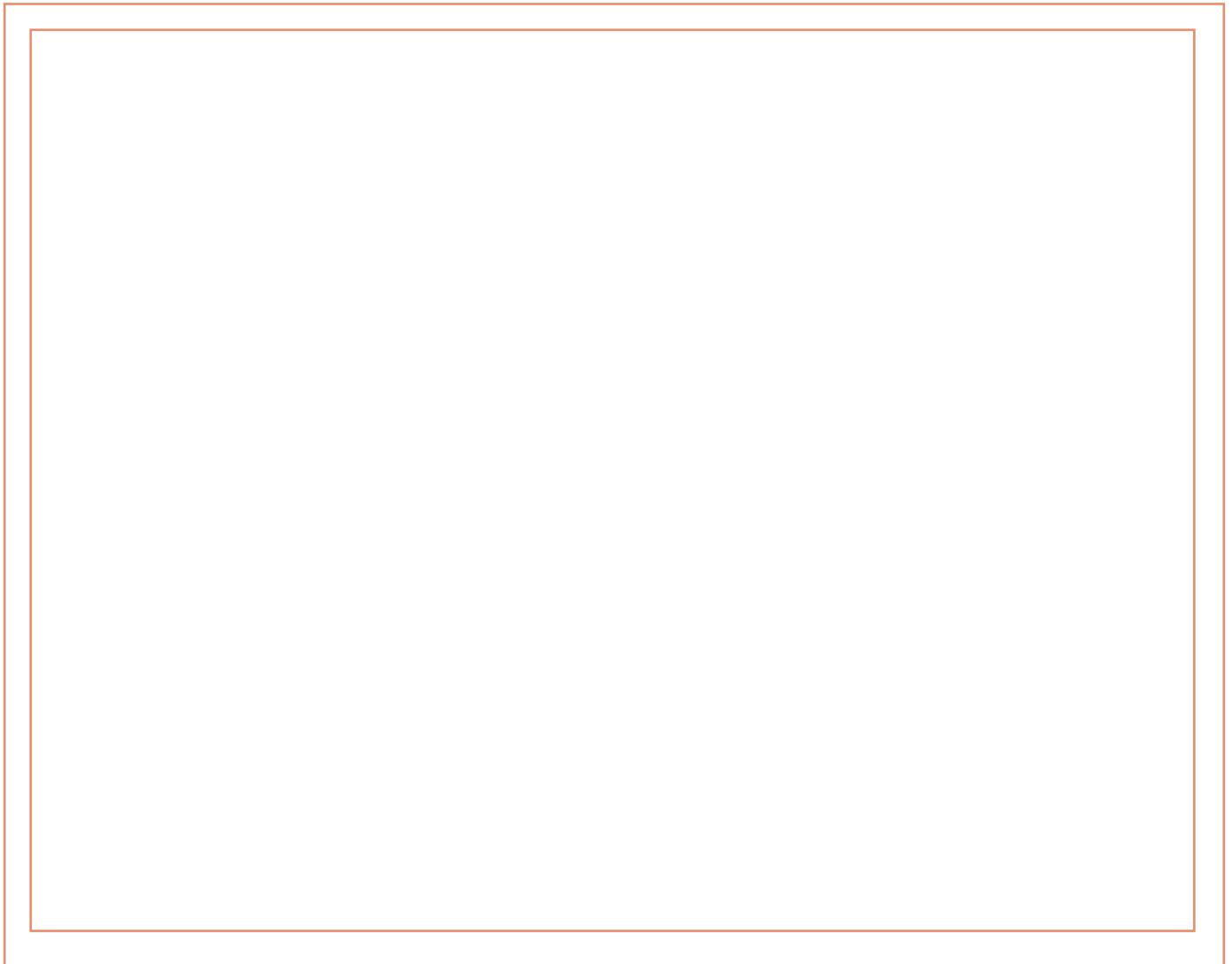
At home Draw your own kuaka.

In the truck Find me and do a rubbing.

THIS IS ME *and my* WHĀNAU

Tell us a bit about you and your whānau, what are some characteristics about your whānau that people might not know of that you like in particular.

Sketch yourself with your whanau!



A name is a gift given to identify who you are. How we got our name can tell a story.

Find out the story of your name.

My name is:

My surname is from:

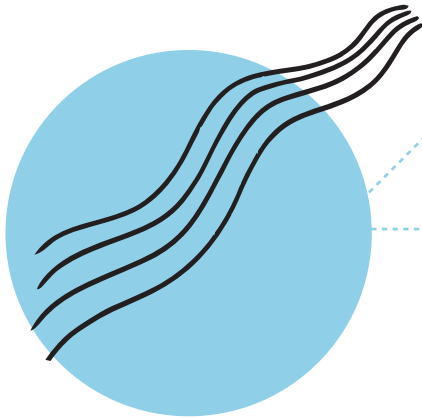
My family comes from:

TŌKU PĒPEHA

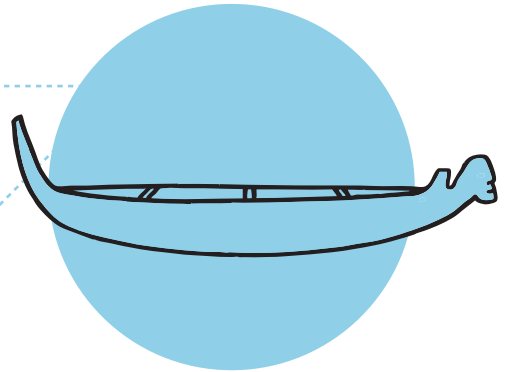
about me



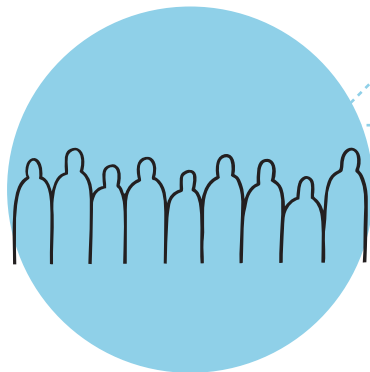
Ko te maunga.
My mountain is...



Ko te awa/roto/moana.
My river/lake/sea is...



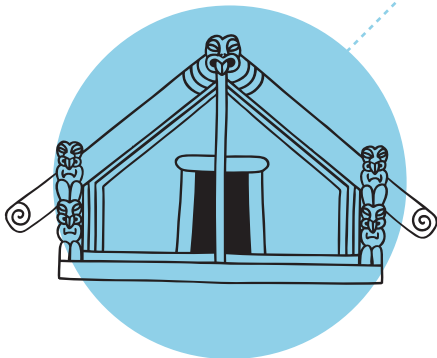
Ko te waka.
My waka is...



Ko te iwi.
My tribe is...

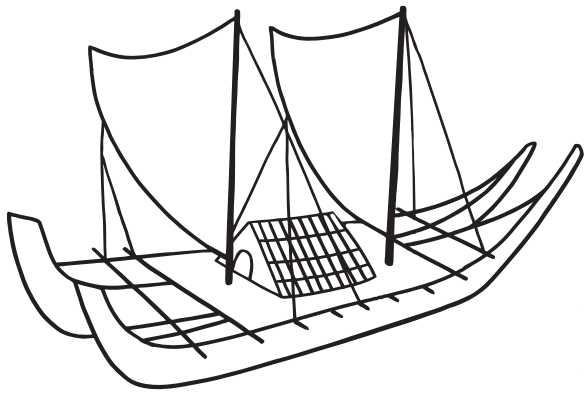


Ko te whānau.
My family is...



No ahau.
I am from...

maunga	mountain
awa	river
waka	waka
iwi	tribe
roto	lake
moana	sea
kāinga	home
whānau	family

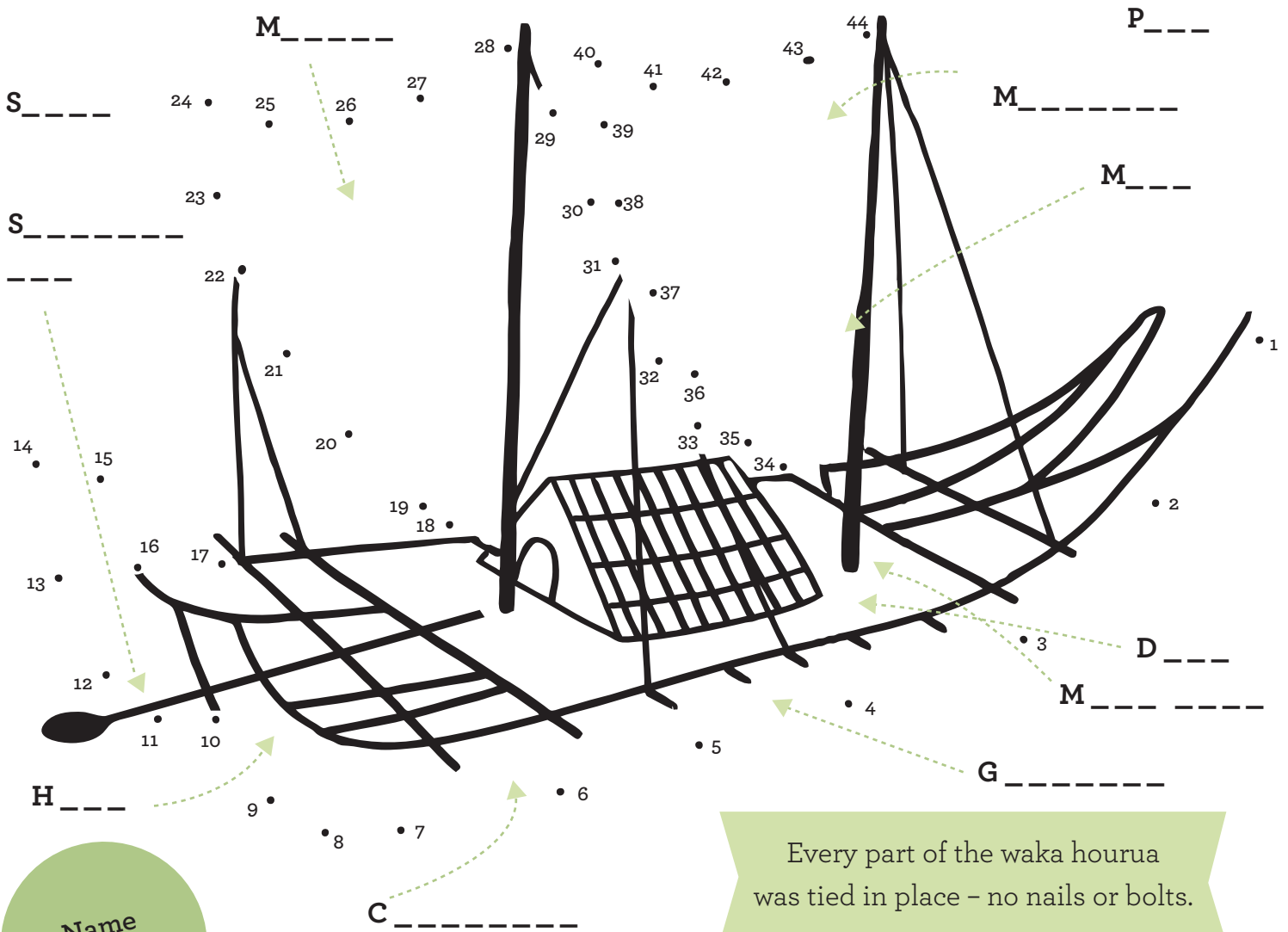


WAKA HOURUA

Pacific sailing canoes

Join the dots, then name the parts

Waka hourua have two hulls and two masts. Strong and sturdy.



Every part of the waka hourua was tied in place - no nails or bolts.

Name the parts

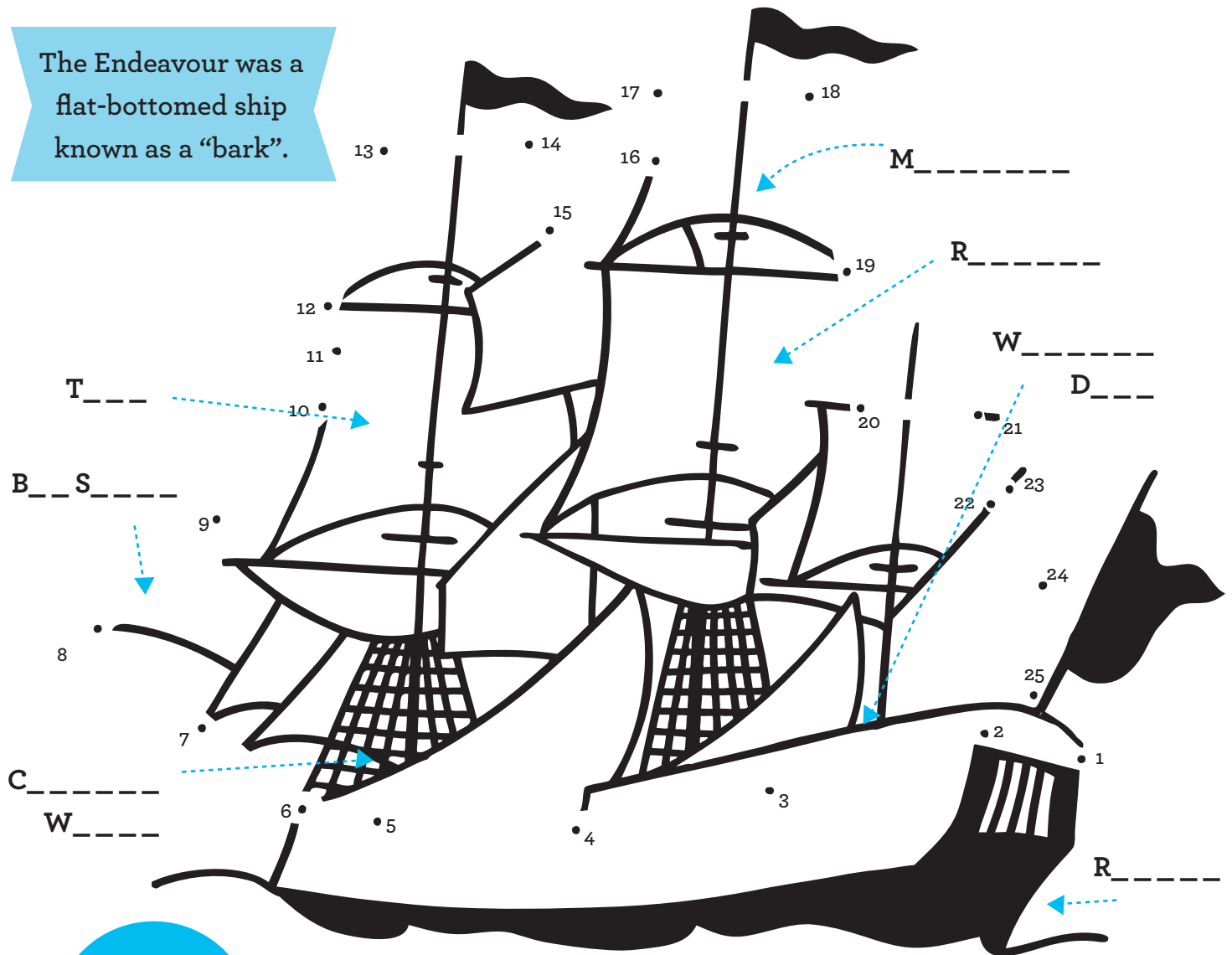
Pou Manawa	<i>Mast</i>	Kei	<i>Stern</i>
Hiwi	<i>Hull</i>	Ihu	<i>Prow</i>
Kiato	<i>Cross-beam</i>	Rā matua	<i>Mainsail</i>
Manawa	<i>Mast step</i>	Rā taunaki	<i>Mizzen</i>
Papa noho	<i>Deck</i>	Hoe tere	<i>Steering oar</i>
Rauawa	<i>Gunwales</i>		



HMS ENDEAVOUR

Join the dots, then name the parts

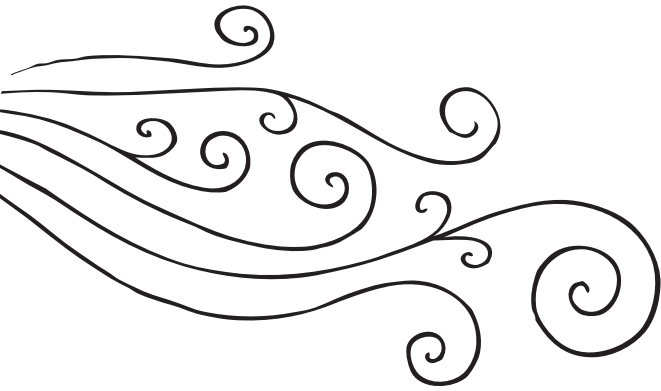
The Endeavour was a flat-bottomed ship known as a “bark”.



Name the parts

Rewa matua	Mainmast
Kāraho ātea	Weather deck
A Runga	Tops
Pītau Whakamaunga Taura	Bowsprit
Hoe Urungi	Rudder
Rīkini	Rigging
He tauru Castan	Capstan winch

It had heaps of space for storing supplies – it was originally built to carry coal.

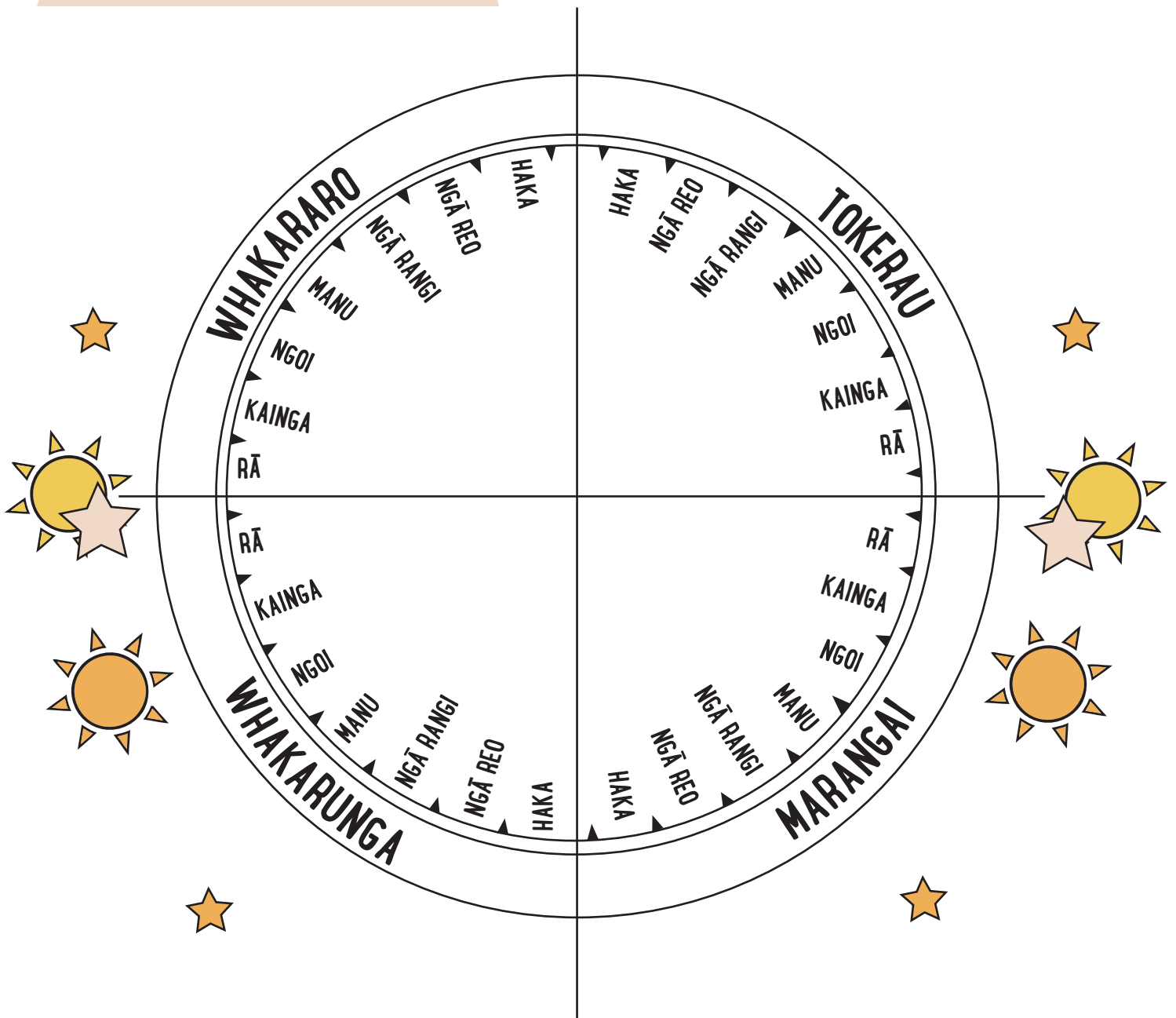


STAR COMPASS

Pacific navigators use a compass like this to help them memorise where stars rise and set.

Colour in each of the “quarters”

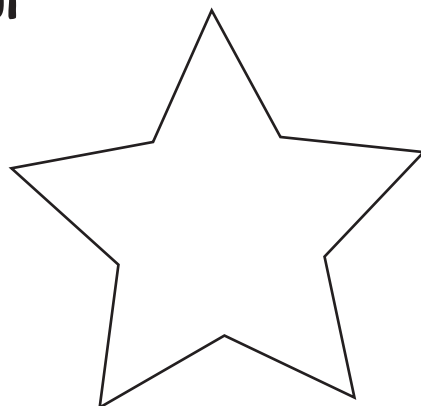
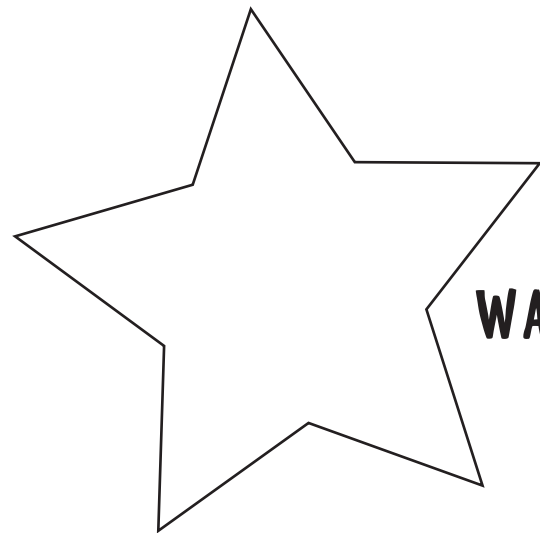
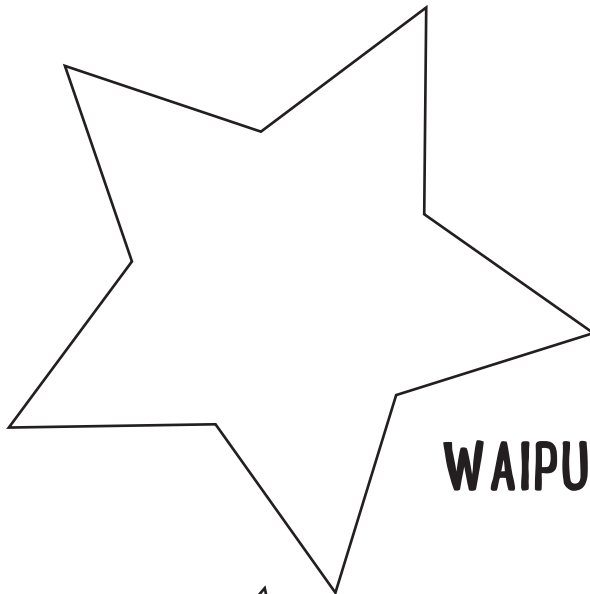
The “quarters” of the compass are named after the four winds.

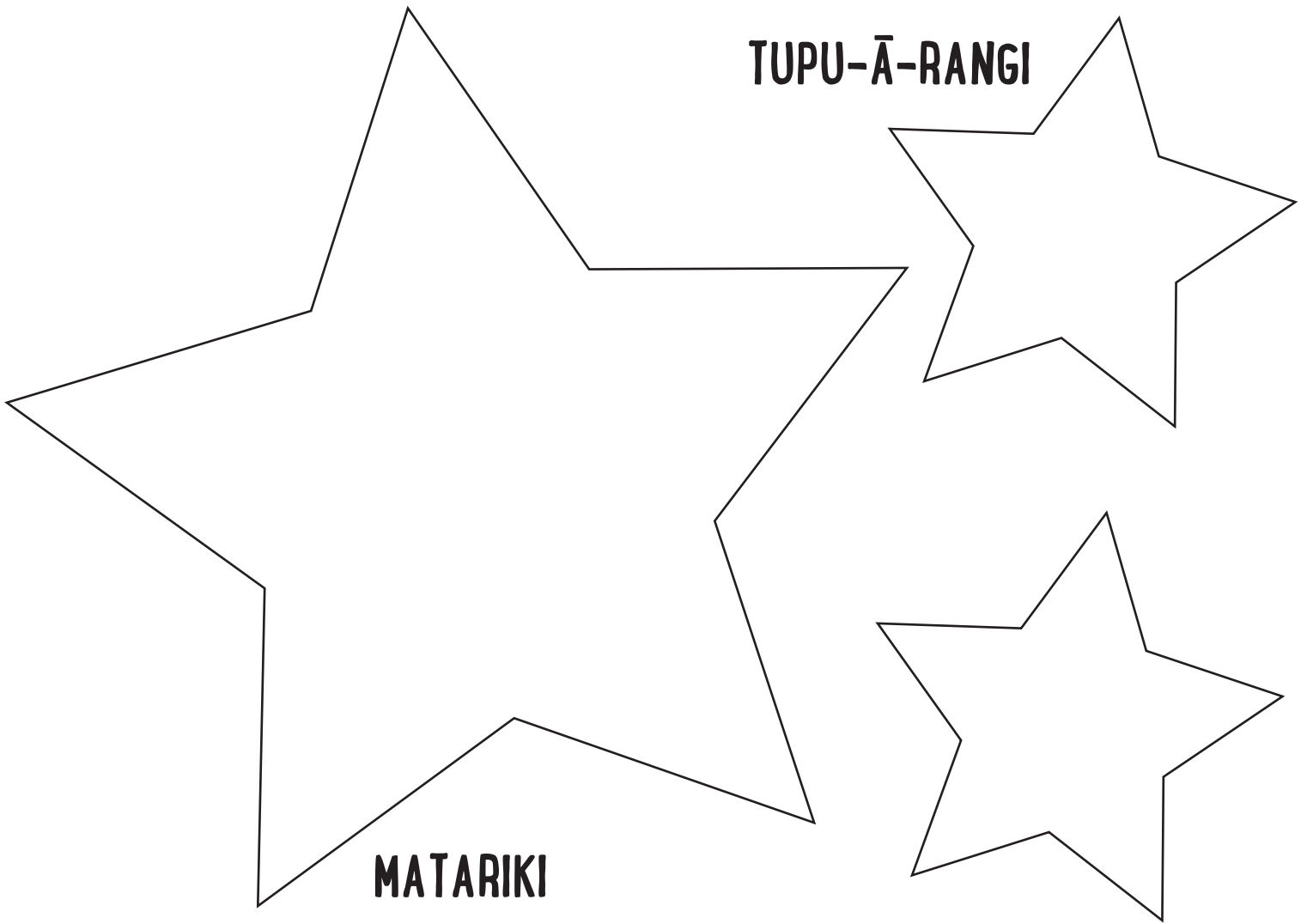


MATARIKI

Matariki is the star cluster that rises at the start of the Māori New Year in mid winter. It's also a celebration of the past and future – a time to tell stories and plan ahead.

Draw a face that suits the character of each star





MATARIKI

TUPU-Ā-RANGI

TUPU-Ā-NUKU

Tupu-ā-nuku

is a gardener.

Tupu-ā-rangi

loves to sing.

Waipunarangi

watches over the oceans, lakes, and rivers, preparing Tangaroa's children to feed the people.

Waitī

Oversees the domain of freshwater.

Waitā

Oversees the domain of saltwater.

Ururangi

gives Papatūānuku hugs, to warm her after the cold and dark of winter.

Matariki

helps all her daughters to do their very best.

Some say there are two additional stars in Matariki:

Pōhutukawa

guides those who have passed on.

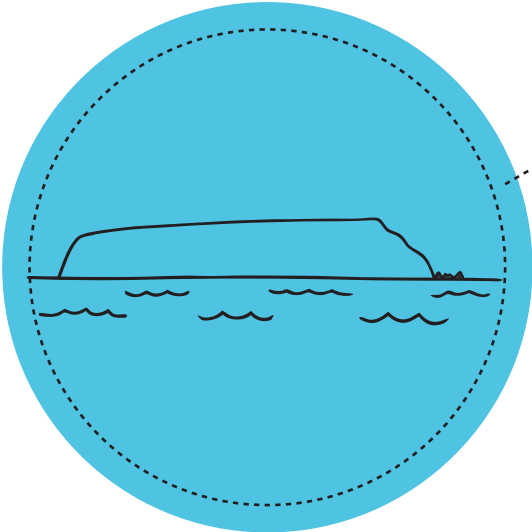
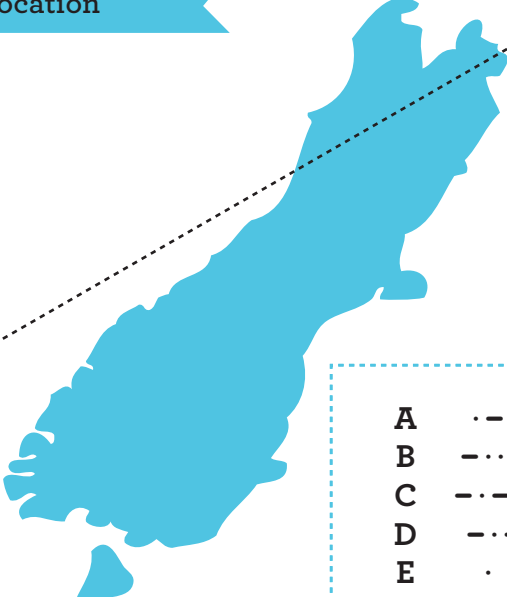
Hīwa-i-te-rangi

leaves us with hope for the year ahead.

KUPE EXPLORES AOTEAROA

The great explorer Kupe was the first person to name parts of Aotearoa - from the bottom of the South Island to Hokianga in the north. These names live on, nearly 1,000 years later!

Use morse code to name the location



A	·-	N	-·
B	-···	O	---
C	-·-·	P	·-·-
D	-··	Q	-·-·-
E	·	R	·-·
F	··-·	S	··-
G	-·-·	T	-
H	····	U	··-
I	··	V	··-·
J	·-·-·	W	·-·-
K	-·-·	X	-·-·-
L	·-··	Y	-·-·-
M	--	Z	-···

---/·/ - - / · - / - · / · - / - - - / - · - / · · - / · - - · / · /

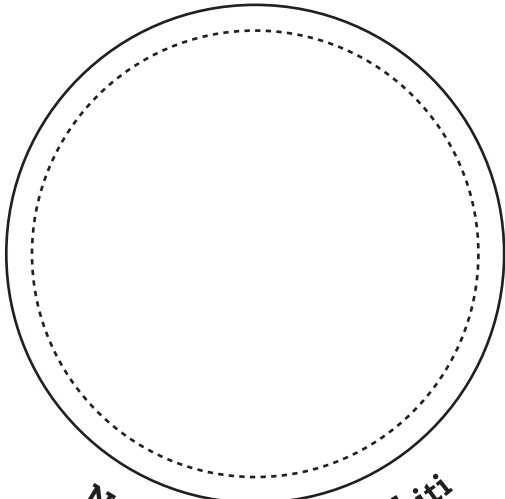
· · - / · · / - / · / - - / - - - / · - / - · / · - /

- · / · · - / · · / · - / - · - / · · / · - - / · - /

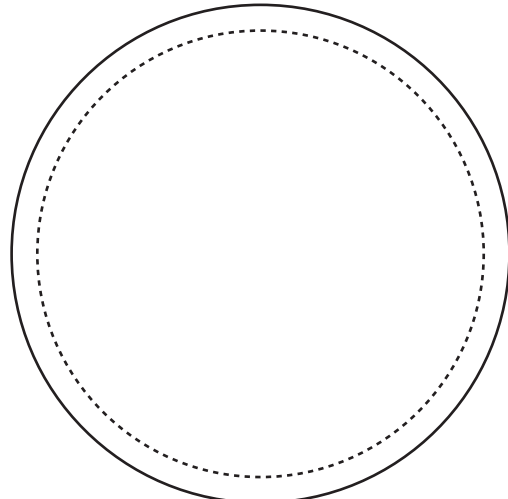
THE WAKA AND SHIPS

At home Draw your own waka and ships.

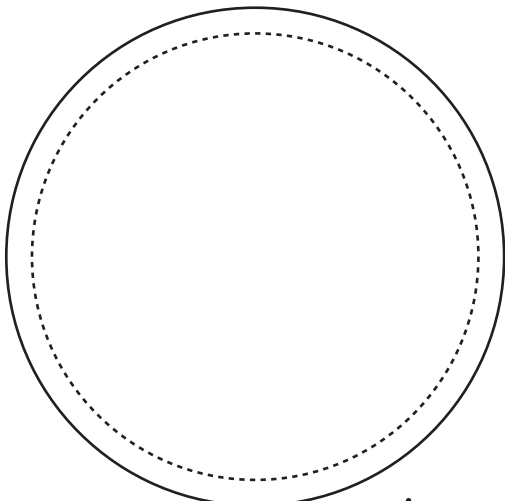
In the truck Find these waka and ships and do a rubbing.



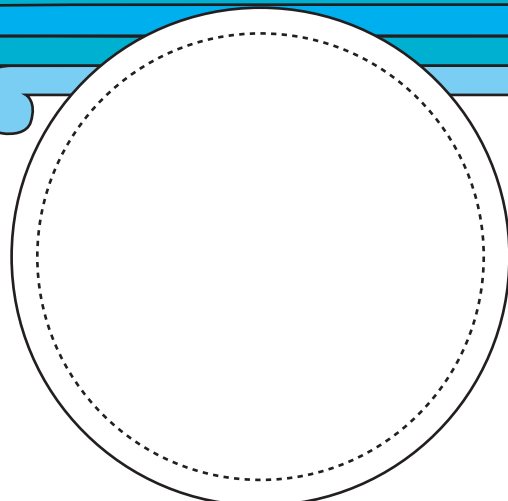
Ngahiraka mai Tawhiti



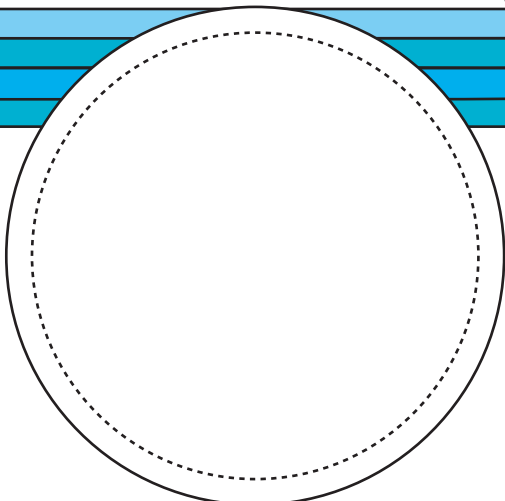
Haunui



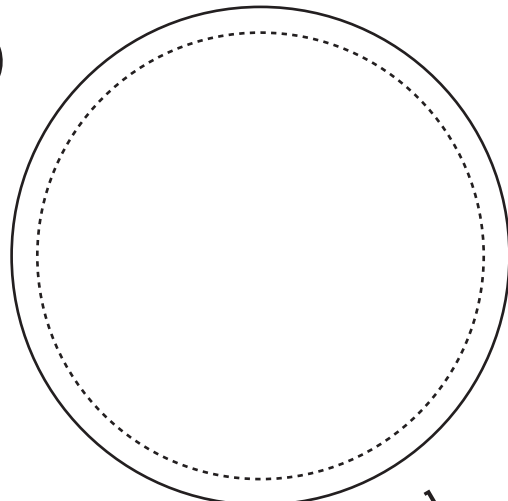
Fa'afaite i te a Māohi



HMS Endeavour



R Tucker Thompson



Spirit of New Zealand

WHICH WAKA *for the* JOB?

Waka come in many shapes and sizes. Some are made for travelling on oceans, and others are for taking short trips across rivers.

Look at these three waka. Write which one you think is good for:

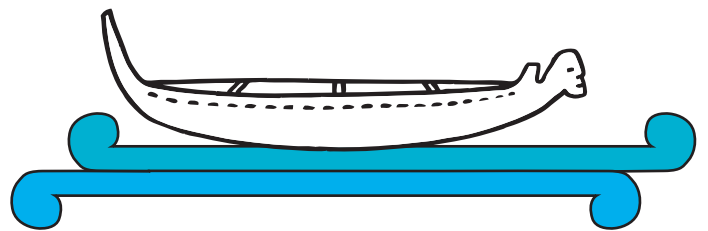
Carrying a big group of warriors

Taking small groups of people up rivers

Moving fast on the ocean

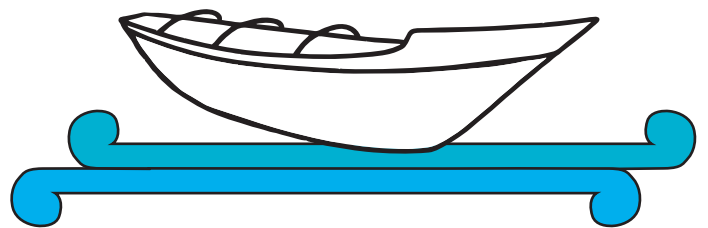
.....
.....
.....
.....

WAKA TAUA



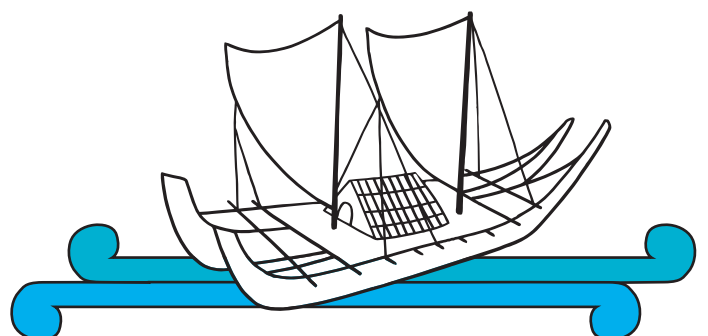
.....
.....
.....
.....

WAKA TIWAI

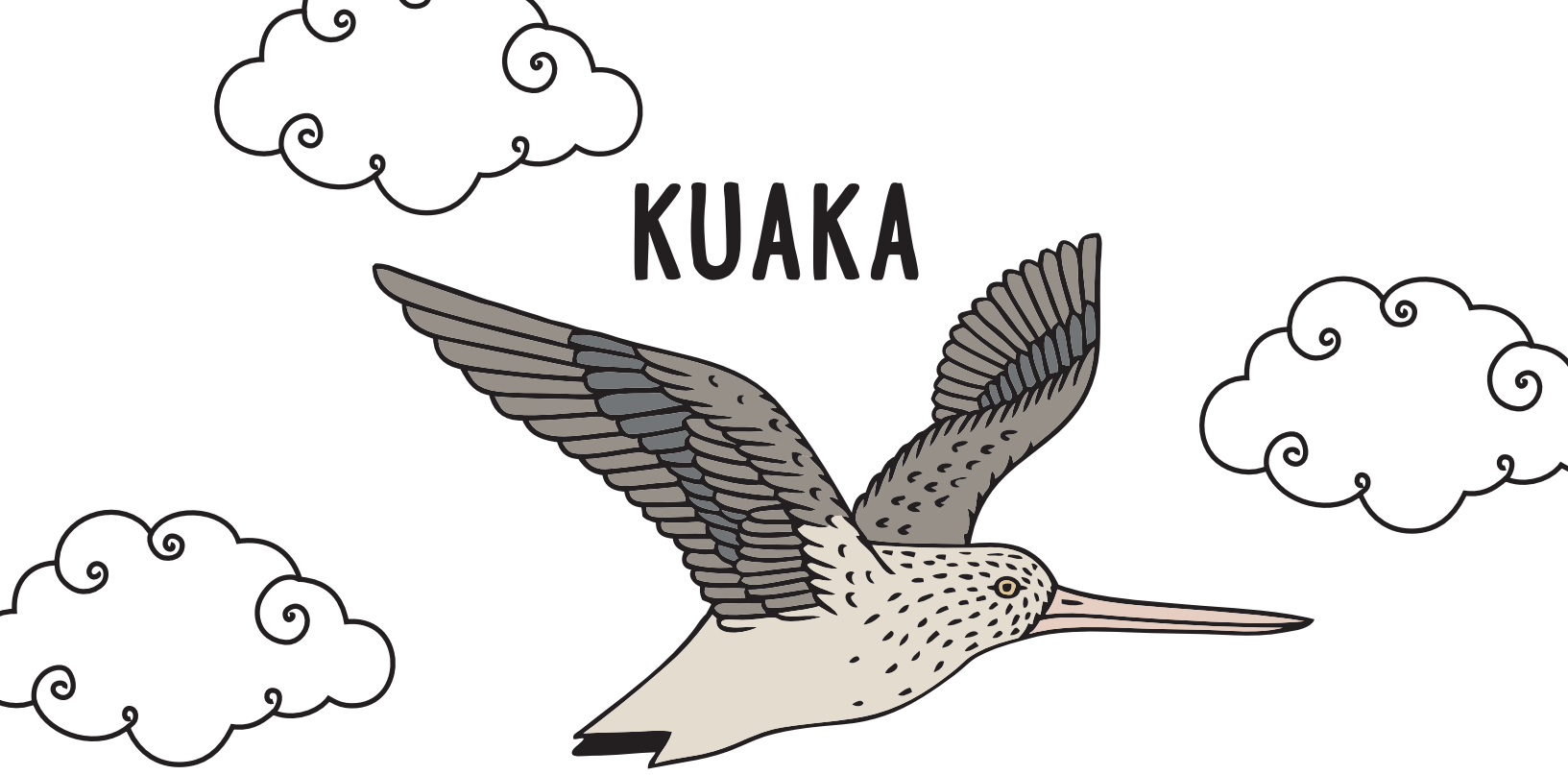


.....
.....
.....
.....

WAKA HOURUA



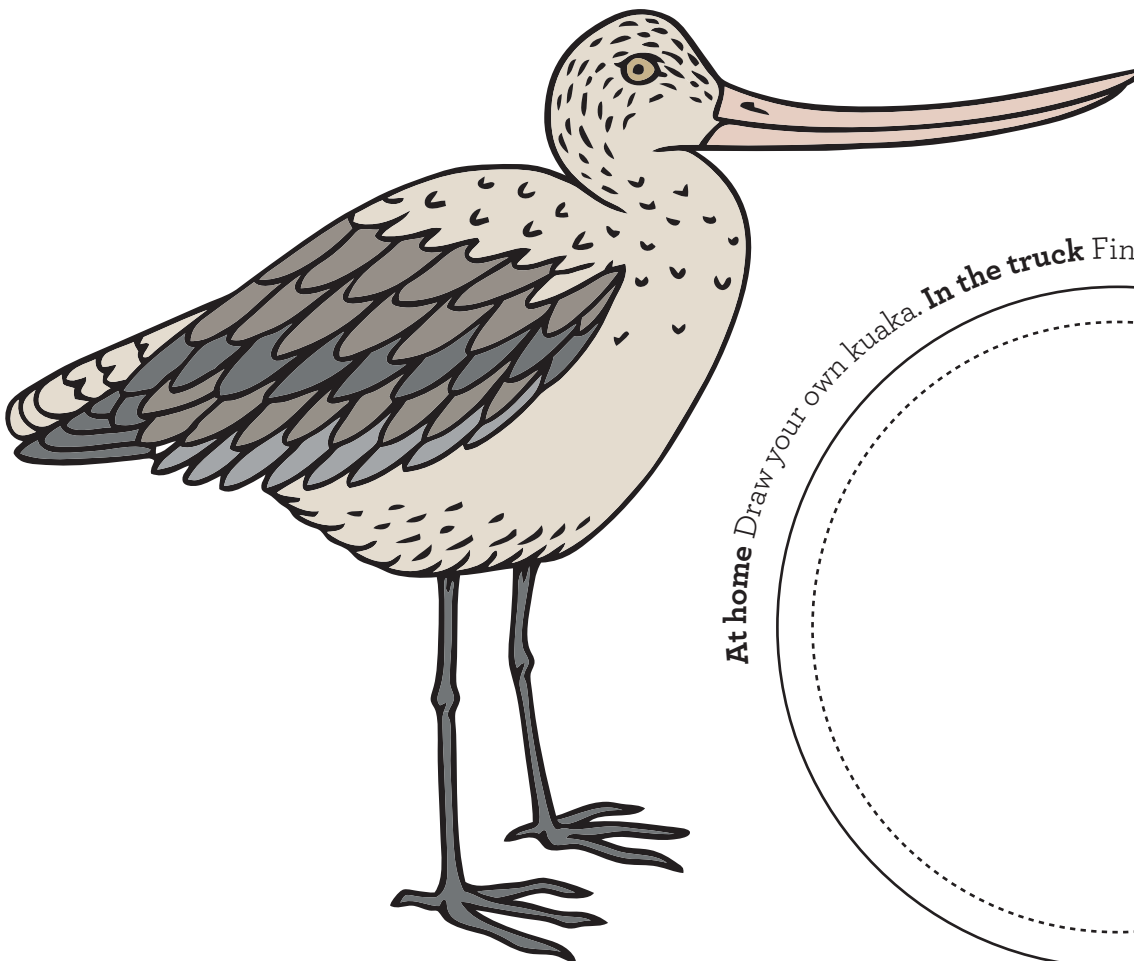
KUAKA



Kuaka (bar-tailed godwits) are amazing Pacific travellers.

Flying kuaka are known as “waka kuaka”.

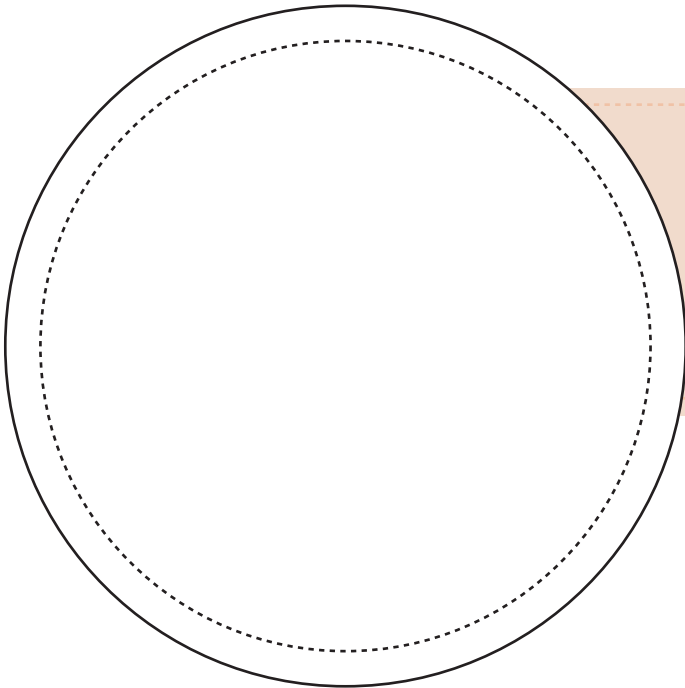
Tens of thousands of kuaka flock to Aotearoa New Zealand in spring to rest and feed on our shores.



At home Draw your own kuaka. **In the truck** Find me and do a rubbing

our **UNIQUE ANIMALS**

Many animals found nowhere else have evolved in Aotearoa New Zealand, far from other lands.
Some are downright quirky!

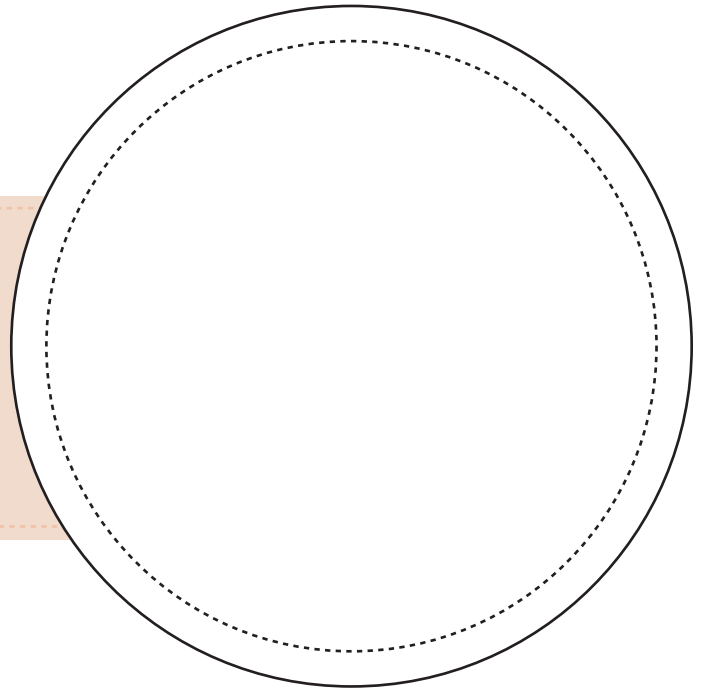


HUIA

These beautiful songbirds were treasured by Māori – only leaders could wear their white-tipped feathers. Huia were easy meals for mammals that arrived in the 1800s, and they soon became extinct.

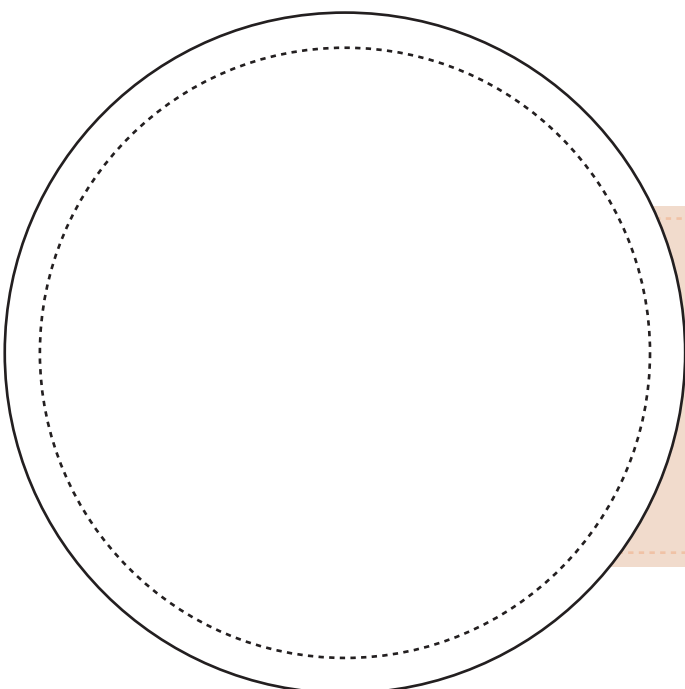
MĀUI DOLPHIN

They're the tiniest marine dolphins in the World, just 1.5 metres long, with a round "Mickey Mouse ear" dorsal fin. They get caught in fishing nets, and only about 60 adults are left.



KĀKĀPŌ

These heavy parrots can't fly, and clamber up trees for food – sometimes, they fall off!
It is the world's only night parrot. There are only about 200 kākāpō left. They're cared for on protected islands.

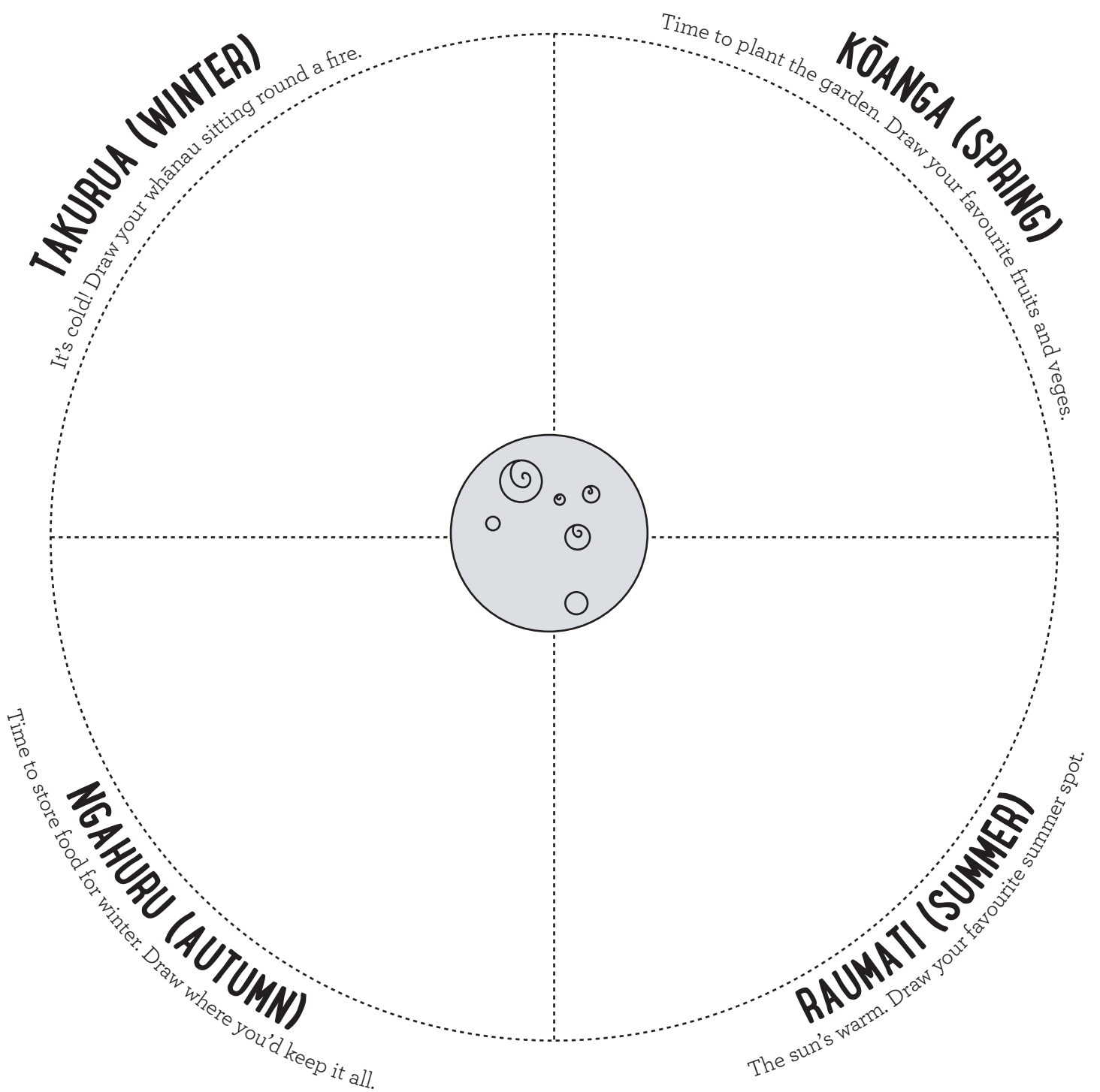


In the truck Find a huia, a māui dolphin, and a kākāpō.
At home Draw these three native animals.

What's one native animal that lives near you?
How can you help make sure it has enough food and a safe place to raise a family?

the
MARAMATAKA

The maramataka is the Māori calendar, based on the cycles of the moon.
It tells you the best times to plant, harvest, hunt, and fish.



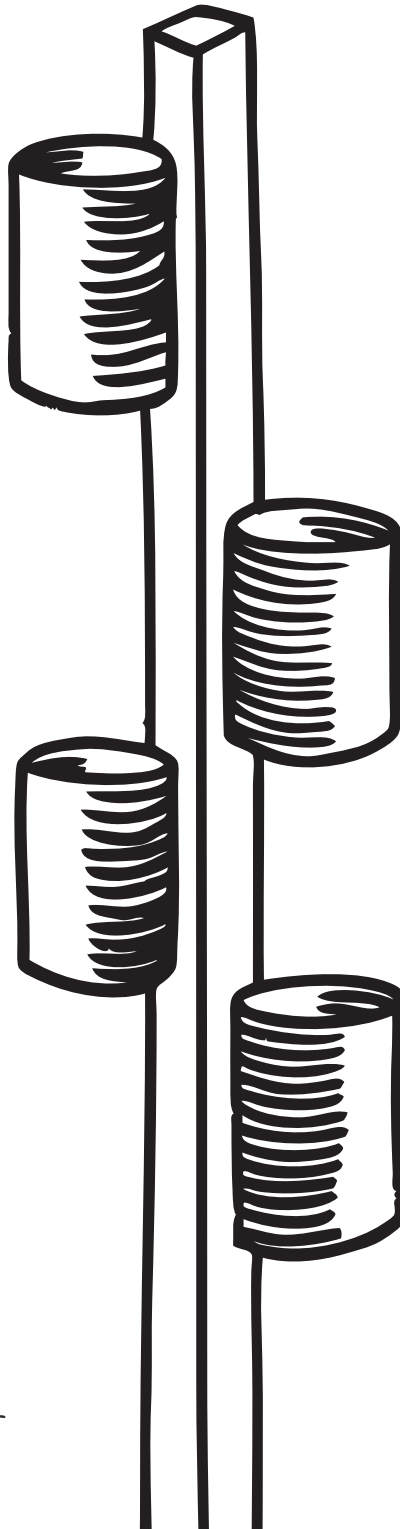


GET GROWING!

If you can grow your own food, you'll always have kai to share.
Community gardening teaches you what fruit and veges grow
best at what time of year.

This little garden is made from recycled cans.

Draw a plant you could grow in each season.



Some plants
you could
draw!



NATIVE PLANTS

Māori used native plants for everything from food and rongoā (medicine) to weaving and carving.

Joseph Banks and Daniel Solander came to Aotearoa New Zealand on the Endeavour and collected seeds and plants. Many hadn't been seen by Europeans before.

Find a plant specimen, and draw or paste it here


What plant
is that? Is it
native?



Ingoa - Name:

Ingoa o te tupu
Plant specimen name

Rā - Date:


TUIA MĀTAURANGA

Find out here: doc.govt.nz/nature/native-plants/inaturalist.nz/

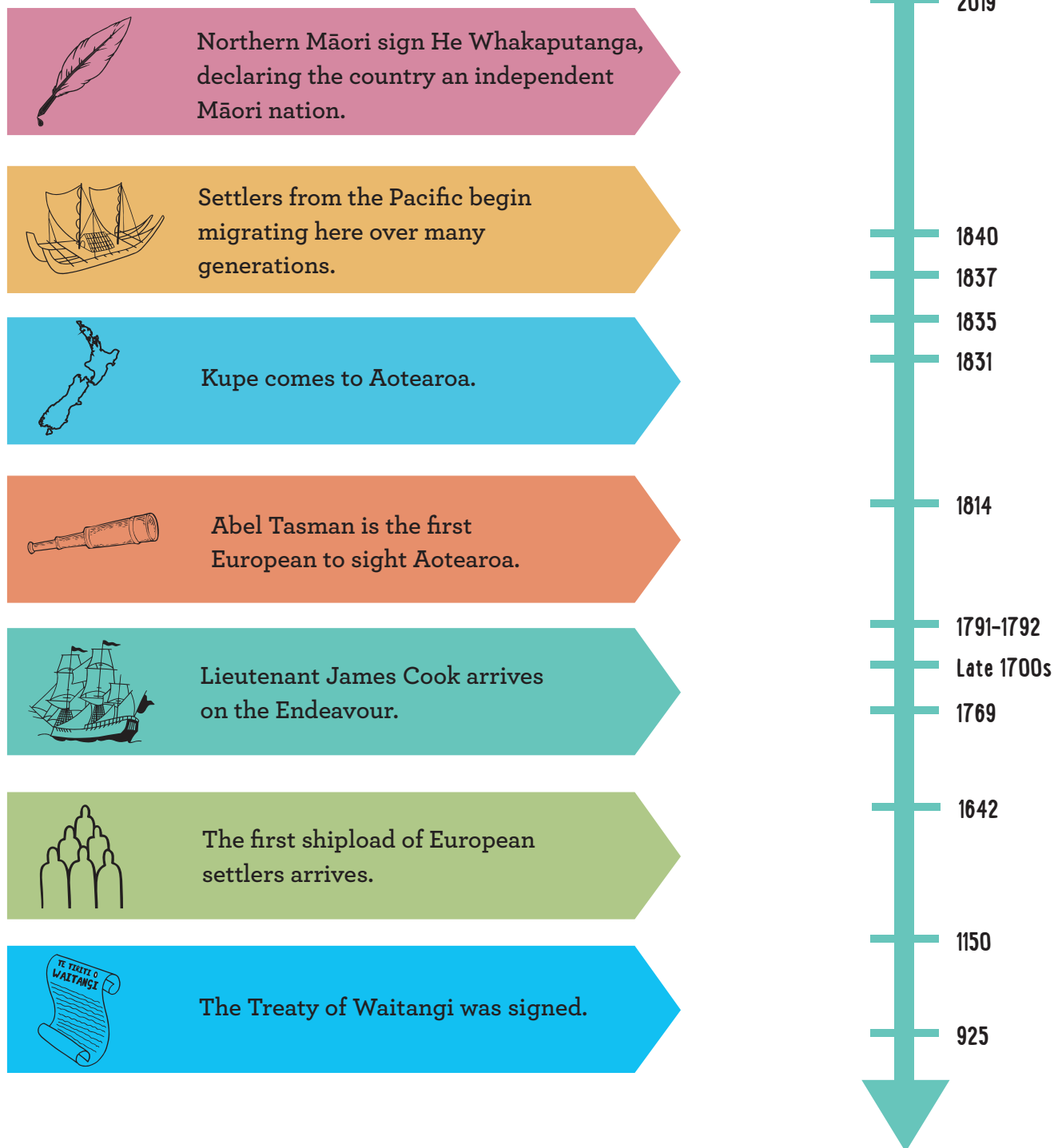
small country BIG EVENTS

The signing of the Treaty of Waitangi was an important event in the history of Aotearoa New Zealand.

But a lot happened before that!

Match the milestone to the date

Put these events in the correct order






OUR TREATY




The Treaty of Waitangi is our founding document – an agreement between Māori and Pākehā to live together in peace.

TRUE OR FALSE?




The Treaty was only signed at Waitangi.

TRUE // FALSE



The English and Māori versions were exactly the same.

TRUE // FALSE



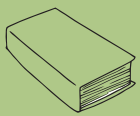
The Treaty was written super fast – in just one night.

TRUE // FALSE



No women signed the Treaty.

TRUE // FALSE



The original copies of the Treaty are at the National Library.

TRUE // FALSE

Answers: 1) False – it was taken around the country. 2) False – they made different promises about who had power over what. 3) True. 4) False – about 13 women signed it. 5) True.

Which one
is which?

THE SHEETS



Unscramble the sheets

The Treaty isn't just one document.
It was signed on nine separate "sheets".

The Waitangi Sheet

The Manukau-Kāwhia Sheet

The Waikato-Manukau Sheet
(The only sheet written in English)

The Printed Sheet

The Tauranga Sheet

The Bay of Plenty (Fedarb) Sheet

The Herald (Bunbury)

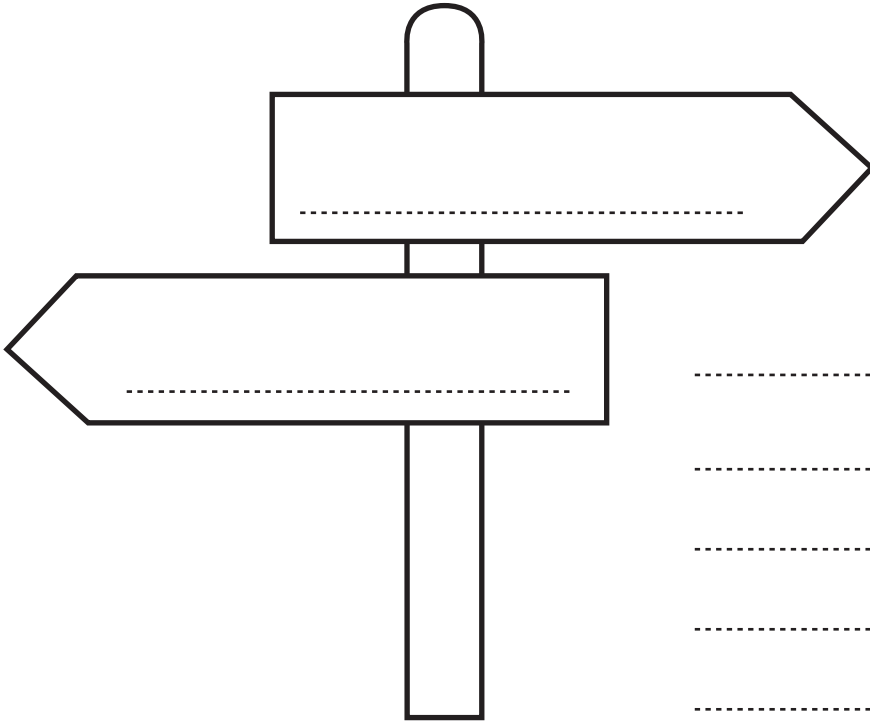
The Cook Strait
(Henry Williams) Sheet

The East Coast (Turanga) Sheet

PLACE NAMES

Place names tell you where you are, and who was here before you.

Write the name of the place you live



Write two things you like about your place:

.....

.....

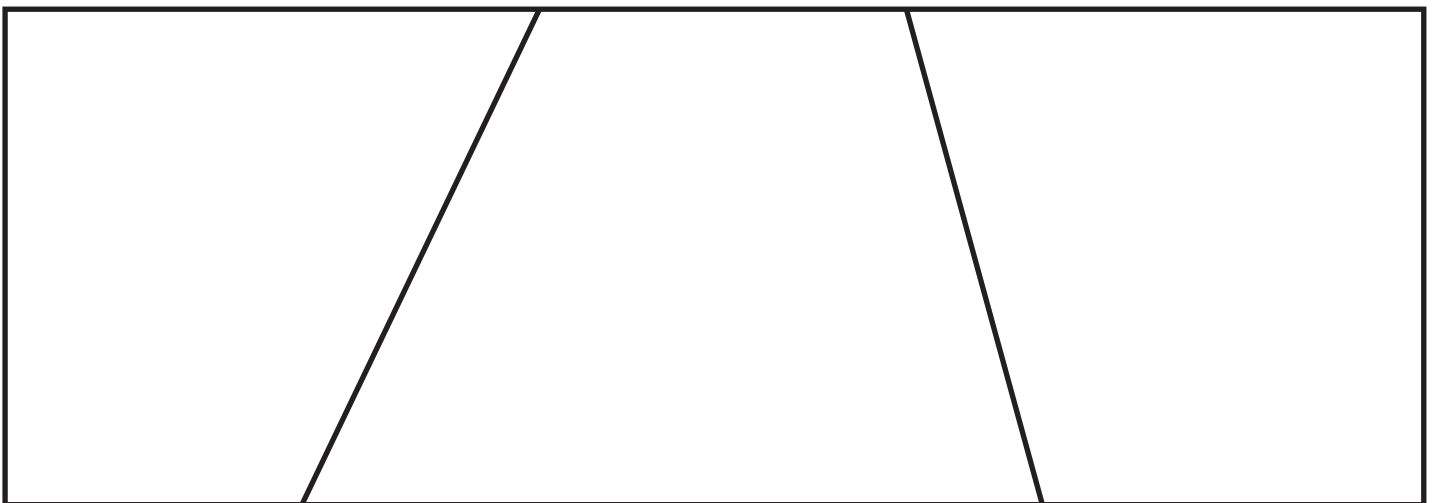
.....

.....

.....

MY PLACE

Tell a story about something amazing that happened in your town a long time ago – comic strip style!



.....

.....

STARS OF TODAY

You can help nature thrive. The environment keeps us alive.
How can you nurture it in return?

Tick what you've done already



Turn the tap off while brushing your teeth



Reuse things in another way



Recycled in your recycling bin

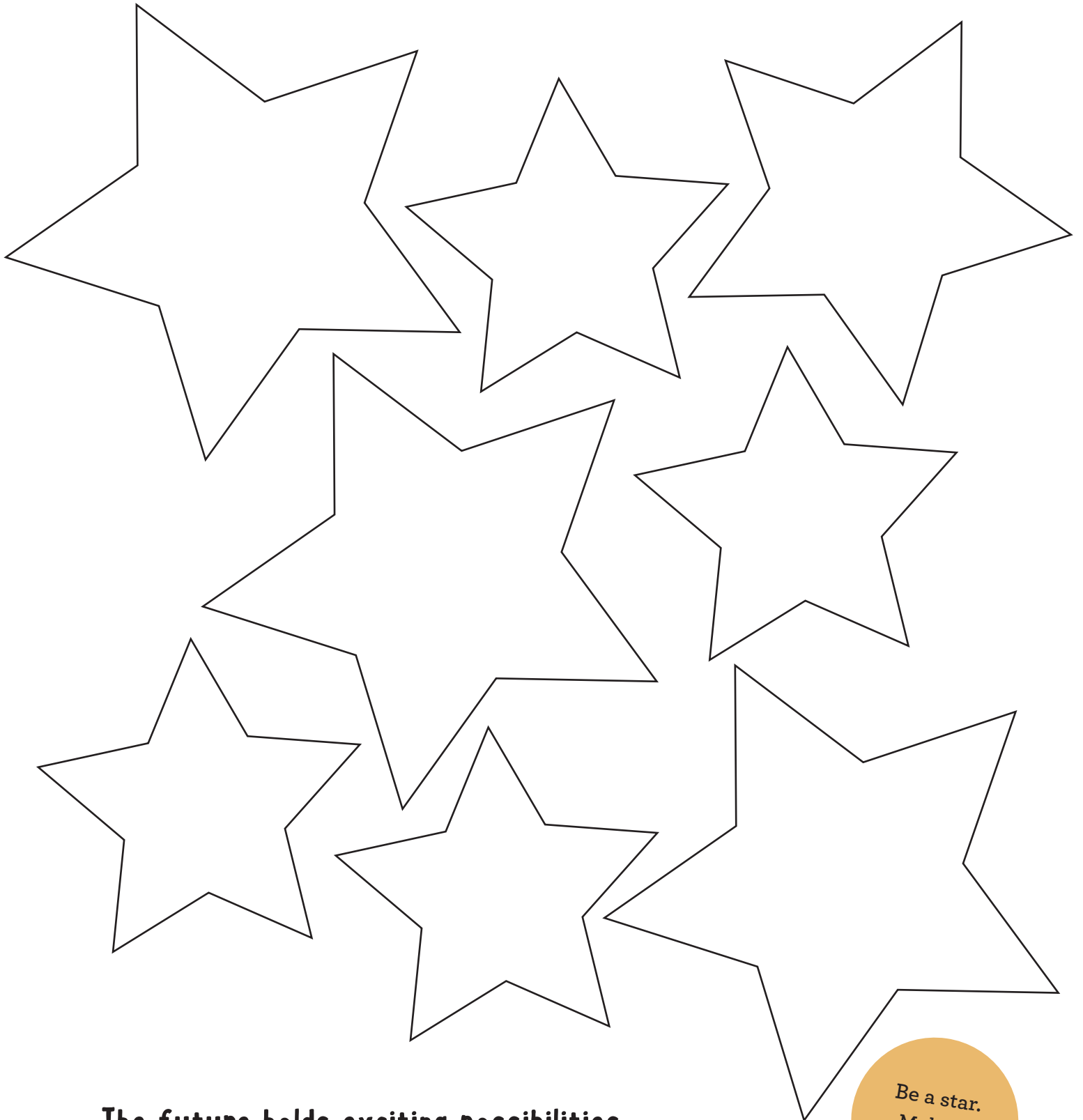


Planted a tree

STARS OF TOMORROW

New Zealand is a country of innovators and explorers.

What are your bright ideas? Draw them into one of the stars



The future holds exciting possibilities.

*Be a star.
Make it
happen.*

GLOSSARY

1-Maramataka	<i>Māori lunar calendar</i>
2-Tangaroa	<i>God of the sea and fish</i>
3-Waka hourua	<i>double canoe</i>
4-Matariki	<i>star constellation Pleiades</i>

Hiwi	<i>hull</i>
Kiato	<i>cross-beam</i>
Manawa	<i>mast step</i>
Papa noho	<i>deck</i>
Rauawa	<i>gunwales</i>
Kei	<i>stern</i>
Ihu	<i>proW</i>
Rā matua	<i>mainsail</i>
Rā taunaki	<i>mizzen</i>
Hoe tere	<i>steering oar</i>
Pou Manawa	<i>mast</i>

For more ideas and resources visit our website
tuaeducation.org.nz

The history of Aotearoa New Zealand has many perspectives,
some lesser known than others.

We present some here, and we welcome yours.

Sharing knowledge and hearing different perspectives gives us an
opportunity to learn more about the history of Aotearoa New Zealand, the
nation's identity, language and culture, and to help shape the future.

The Ministry of Education would like to acknowledge the contribution of
iwi, the waka community, historians, National Library, Land Information
New Zealand and resource collections in Te Ara Encyclopedia of New
Zealand, Te Papa and NZ History.