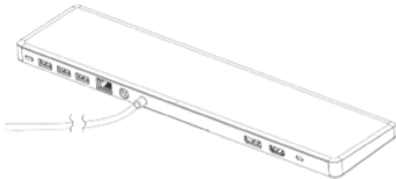


Quick Start Guide

 **Essential**
Docking Station

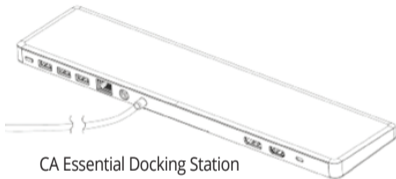


The Essential Dock for Your Desk

www.CyberAcoustics.com

CA P/N: DS2000 Rev. A00
2020-09

In the Package



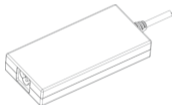
CA Essential Docking Station

Note: The Docking Station is packed below the insert in the box. Pull out the top insert to locate Docking Station below.

 **Essential
Docking Station**



Quick-Start Guide



AC Power Adapter



AC Power Cable

Table of Contents

Pages

Connecting the Power to the CA Essential Docking Station	1
Connecting the CA Essential Docking Station to Your Laptop	2
Connecting Your Peripherals to the CA Essential Docking Station	3
Cooling Function of the CA Essential Docking Station	4
Technical Specifications	5
Frequently Asked Questions	6
Contacting Customer Support	7
Safety and Precautions	8

Connecting the Power to the CA Essential Docking Station

Rear View



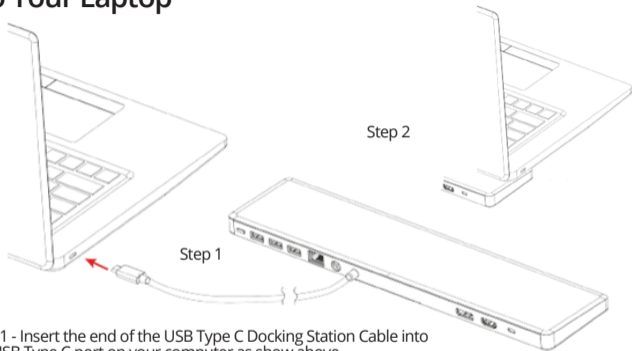
Insert the end of the cable attached to the AC Power Adapter into the Connection for the AC Power Adapter on the CA Essential Docking Station as shown.



Insert the female end of the AC Power Cable into the connector on the AC Power Adapter as shown.

Connect the other end of the AC Power Cable in a power source.

Connecting the CA Essential Docking Station to Your Laptop



Step 1 - Insert the end of the USB Type C Docking Station Cable into the USB Type C port on your computer as show above.

Step 2 - Place the laptop on the CA Essential Docking Station as shown. The Laptop should rest on the front 1/3 or 1/2 of the Docking Station to maximize the performance of the Cooling function as described on Page 4.

Note: The CA Essential Docking Station provides power to your Laptop computer when connected and will slowly charge the battery on your laptop.

Connecting Your Peripherals to the CA Essential Docking Station



3 - USB Type A Gen 2 Ports
(5V \approx 1.5A per USB Port)



USB Type C
Docking Station Cable



DisplayPort and HDMI Connection
to a TV or Monitor



Connection for
Network Ethernet
Cable - RJ45



Connection for
AC Power Adapter



Connector for Security
Lock and Cable



K-Lock

Side View



USB Type A Gen 1 Ports
(5V \approx 1.5A per USB Port)



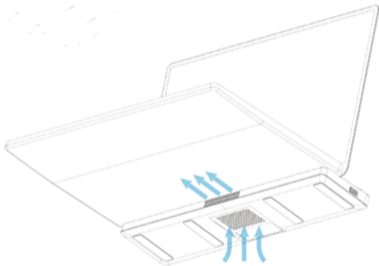
Cooling Function of the CA Essential Docking Station

Your CA Essential Docking Station provides a cooling system for your laptop. The cooling system has 3 different speeds for the internal fan that pushes the external air into the laptop to reduce the internal heat of the Laptop.

Utilize the lowest speed for the quietest fan noise and the highest speed for the air flow and cooling to you Laptop.



Cooling Button



From the Off Position:

- Press the Cooling Button one time to turn the cooling system to the low speed.
- Press the Cooling Button two times to turn the cooling system to the medium speed.
- Press the Cooling Button three times to turn the cooling system to the high speed.
- Press the Cooling Button four times to turn off the cooling system.

Technical Specification


Specifications

Power Supplied from Docking Station	<ul style="list-style-type: none">• USB-C with DP alt mode: support up to 90W Power Delivery
USB Ports	<ul style="list-style-type: none">• 3 - USB 3.1 Gen 2 Type-A port (10Gb/s)• 1 - USB 3.0 Gen 1 Type-A port (5Gb/s)
Video Output Ports and Supported Resolutions	<ul style="list-style-type: none">• DP 1.4 source with DSC – Both ports up to 2k@60Hz or a single port up to 4k@60Hz• DP 1.2 source or below – Both ports up to 1080P or a single port at 4k@30Hz <p>Note: 4K/60Hz only supported on computer with HBR3 feature.</p>
Ethernet	10/100/1000 GbE
AC Power Adapter (Dual Voltage)	Input 100-120V or 200-240V at 50/60Hz

Recommended system requirements

Supported operating system	Windows 10 64 Bit
Operating temperature	Product working at ambient temperature for 0~35°C

Frequently Asked Questions

Frequently Asked Question	Possible Solutions
The docking station is not working on with the USB-C port on your computer	<ul style="list-style-type: none">You may need to update your computer's BIOS and computer graphic drivers to the latest versions. Please refer to your Laptop manufactures User Manual for specific instructions on how to update the BIOS and graphics drivers. Older BIOS versions and drivers could result in your computer not recognizing the docking station or not functioning optimally.
Multiple displays are not working	<ul style="list-style-type: none">The docking station adapter supports dual display out and if unable to display. You can connect a peripheral to the HDMI port or DisplayPort monitor one at a time to verify the display issue.
Unable to read and write to an external SSD/HDD and optical (CD/DVD/Blu-ray) drive when connected to the docking station adapter	<ul style="list-style-type: none">Some external SSD/HDD/Optical drives require higher power than what your docking station adapter can support.It is recommended that you connect external SSD/HDD/Optical drive to your computer directly.
Power surge message pops up when connecting a peripheral to the docking station adapter	<ul style="list-style-type: none">The peripheral you connected to the docking station adapter needs more power.Disconnect other peripherals connected to the docking station adapter.For high-power peripherals, it is recommended to connect the peripheral to your computer directly.All devices will disconnect when connecting a high-power device to a USB port that is over the USB current limitation. A power surge message will be shown on the Laptop. You can remove the high-power device and the other low power device will recover automatically.This message for the power surge will not impact video functions.
Resolution on the monitor is lower than 4K at 60 Hz when connected to the HDMI or DisplayPort of the Docking Station	<ul style="list-style-type: none">Supports dual ports (DP and HDMI) of 4K resolution at 60 Hz with computers that have DisplayPort 1.4 with DSC. Computers with DisplayPort 1.2 or below, the docking supports dual ports of 1080 resolution at 60Hz or a single port of 4K resolution at 30Hz.
The docking station adapter is not charging your computer through the USB-C port	<ul style="list-style-type: none">The docking station adapter supports up to 90W max Power Delivery.The minimal power requirement for charging is platform dependent. Please refer the minimal power requirement in your platform user manual.
No video on the monitor attached to the docking station adapter	<ul style="list-style-type: none">Check the video connection cables.Disconnect the monitor from the docking station adapter and wait for 10 seconds then re-connect the monitor.
Video on the attached monitor is distorted or corrupted	<ul style="list-style-type: none">Check the video connection cables.Check and update the video resolution under Settings > Display > Display resolution
Video on the attached monitor is not displayed in extended mode	<ul style="list-style-type: none">Change the setting under Settings > Display > Multiple displaysSwitch modes by pressing the Windows Key  + P

Customer Support

If you have a question about your CA Essential Docking Station our Customer Support Team wants to assist you.

Contact us at:

www.cyberacoustics.com/support/contact

Safety and Precautions

- Read and follow all instructions – All operating and use instructions should be followed.
- Protect the AC Power Adapter and Cable from being pinched, particularly at the connectors. Unplug during lightning storms or when unused for long periods of time.
- Do not place near any heat sources such as radiators, heat registers, stoves, or other apparatus (including amplifiers) that produce heat.
- Do not make alterations to the Docking Station.
- Do not place near naked flame sources, such as lighted candles.
- Do not expose to excessive heat (e.g. from storage in direct sunlight, fire or the like)
- Use with Listed Information Technology Equipment only.

2020 Cyber Acoustics or its subsidiaries. All rights reserved. Cyber Acoustics and other trademarks are trademarks of Cyber Acoustics or its subsidiaries. Other trademarks may be trademarks of their respective owners.