

Quick Start Guide



 **Essential**
Micro Docking Station

In the Package



CA Essential Micro Docking Station



Quick-Start Guide

 **Essential**
Micro Docking Station

Table of Contents	Pages
Using the CA Essential Micro Docking Station	1 - 2
Using CA Essential Micro Docking Station with your Laptop	3 - 4
USB Type C AC Power Adapter	
Using CA Essential Micro Docking Station a USB Type C	5 - 6
15W Power Adapter (Not Included)	
Technical Specifications	7
Frequently Asked Questions	8 - 9
Contacting Customer Support	10
Safety and Precautions	11 - 13

Using CA Essential Micro Docking Station

- The CA Essential Micro Docking Station will get its power when connected to the Laptop's USB Type C port. The functionality will vary based on the power available from the Laptop's USB Type C port.
- Power available for attached peripherals and wireless charging are dependent on the power supplied by your Laptop's USB Type C port. The USB Type C port on your laptop may support either 7.5W or 15W. If the power supplied is 15W then all the functions of the CA Essential Micro Docking Station can be used simultaneously. If the power supplied is 7.5W NOT all functions of the CA Essential Micro Docking Station can be used simultaneously.
- The 7.5W power supplied by the Laptop's USB Type C port will not allow the Qi Wireless Charger, USB Type A port, USB Type C port and the HDMI port to be used simultaneously. On these Laptops the Qi Wireless Charger will be disabled when the USB Type A port and USB Type C port are being used.
- If the power supplied by the Laptop's USB Type C port is 7.5W a USB Type C 15W Power Adapter purchased separately will be necessary to power the CA Essential Micro Docking Station to allow the Qi Wireless Charger, USB Type A port, USB Type C port and the HDMI port to be used simultaneously.

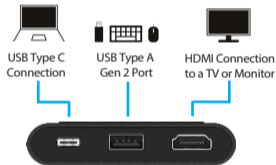
Note: USB Type C 15W Power Adapter and Cable available at www.cyberacoustics.com

Using CA Essential Micro Docking Station - Continued

Step 1: Connect CA Essential Micro Docking Station to your Laptop.



Step 2: Connect your Peripherals to the CA Essential Micro Docking Station.



Step 3: Place your device supporting Wireless Charging on the top of the CA Essential Micro Docking Station.

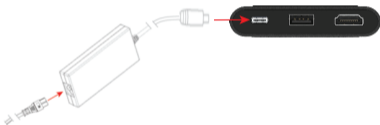


Using CA Essential Micro Docking Station with your Laptop USB Type C AC Power Adapter

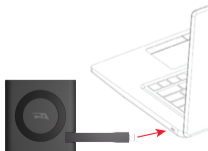
- If your Laptop computer comes with a USB Type C Power Adapter rated at 90W or higher. This power adapter can be used to power the CA Essential Micro Docking Station as well as slowly charge the battery on your laptop.

Step 1: Connect CA Essential Micro Docking Station to your Laptop USB Type C AC Power Adapter as shown on.

Step 2: Plug your Laptop USB Type C AC Power Adapter to a power source.

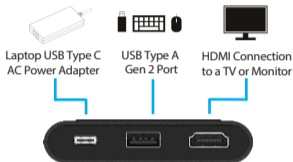


Step 3: Connect CA Essential Micro Docking Station to your Laptop.



Using CA Essential Micro Docking Station with your Laptop USB Type C AC Power Adapter - Continued

Step 4: Connect your Peripherals to the CA Essential Micro Docking Station.



Step 5: Place your device supporting Wireless charging on the top of the CA Essential Micro Docking Station.

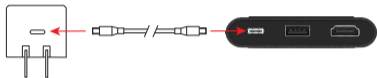


Note: The CA Essential Micro Docking Station will support standalone charging of your smartphone when the CA Essential Micro Docking station is not connected to your Laptop. The CA Essential Micro Docking Station still needs to be connected to a power source with your Laptop USB Type C AC Power Adapter.

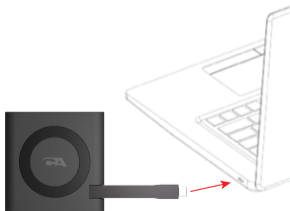
Using the CA Essential Micro Docking Station with a USB Type C 15W Power Adapter (Not Included)

Step 1: Insert the USB Type C Charging Cable into the USB Type C port on the CA Essential Micro Docking Station.

Step 2: Insert the other end of the USB Type C Charging Cable into the connector of a USB Type C 15W Power Adapter as shown and plug the USB Type C 15W Power Adapter into a power source.

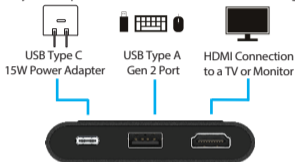


Step 3: Insert the end of the USB Type C Docking Station Cable into the USB Type C port on your Laptop as show below.



Using the CA Essential Micro Docking Station with a USB Type C 15W Power Adapter (Not Included) - Continued

Step 4: Connect your Peripherals to the CA Essential Micro Docking Station.



Step 5: Place your device supporting Wireless charging on the top of the CA Essential Micro Docking Station.



Note: The CA Essential Micro Docking Station will support standalone charging of your smartphone when the CA Essential Micro Docking station is not connected to your Laptop. The CA Essential Micro Docking Station still needs to be connected to a power source with a USB Type C 15W Power Adapter and Cable.


Technical Specification

Interface Specification	<ul style="list-style-type: none">- USB Type A: Supports USB3.1 Gen1 and Gen2- USB Type C: Supports USB3.1 Gen1 and Gen2 (Power Delivery with USB Data and DP Alt mode)- HDMI: Support HDMI2.0 with HDCP2.2- Power Delivery: Supports PD3.0 without Fast Power Role Swap
Video Output Resolution	<ul style="list-style-type: none">- Video output maximum resolutions:<ul style="list-style-type: none">- 1 x HDMI 2.0b (2 lanes DP HBR3, 3840 x 2160 @ 60Hz)- 1 x DisplayPort 1.4 (4 lanes DP1.4, 3840 x 2160 @ 60Hz)- Supports HDR10- Supports DP1.4 with DPCP
Power Requirements	<ul style="list-style-type: none">- Supports 5W Qi wireless charging.- USB Type C Bus Power: Supports 15W (5V/3A) Laptop Bus Power.- Using Laptop USB Type C AC power adapter: 90W Adapter recommended (Using less than a 90W Adapter will function, but Laptop may not charge or may experience reduced performance.)- Upstream USB Type C power delivery for charging Laptop: Maximum 65W- Supports Power Delivery pass through- PDO support: Bypass (Follow USB Type C AC power adapter's PDO)
Supported operating system	<ul style="list-style-type: none">- Windows 10 64-bit, MAC OS X 10.4.11 or Higher
Operating temperature	<ul style="list-style-type: none">- Product working at ambient temperature for 0~30°C

Frequently Asked Questions

Frequently Asked Questions	Possible Solution
The CA Essential Micro Docking Station does not charge your phone.	<ul style="list-style-type: none">- Make sure the device you are using supports Qi wireless charging.- Make sure the CA Essential Micro Docking Station is plugged into a power source.- Make sure your phone is centered in the center of the Circle Coil on the top of the CA Essential Micro Docking Station.
What does the blinking LED light on the CA Essential Micro Docking Station indicate?	Normally, the blinking LED light indicates that one of the internal safety mechanisms is activated, such as Foreign Object Detection. FOD is an embedded safety mechanism that automatically stops charging if there is interference caused by a foreign object such as metal (e.g. coins, paperclips, bankcards). If applicable, please try removing the phone case or any other accessory (e.g. pop socket, magnet, etc.) before charging to see if this solves the issue.
Why does my iPhone stop charging before it reaches 100%?	iOS 13 comes with the "Optimized Battery Charging" feature, which has been designed to increase the life span of the battery. The software keeps track of your charging habits and waits to finish charging past 80%. While "Optimized Battery Charging" can be helpful, it has disadvantages by not allowing your battery to be fully charged upon demand. This function can be disabled in the settings of the phone. To disable go to "Settings" "Battery" "Battery Health" "Optimized Battery Charging" and disable this function.
The CA Essential Micro Docking Station is not charging your computer through the USB Type C cable.	Make sure your external Type C AC power adapter is 90W or higher.
The displays are not working.	Connect a HDMI monitor to the HDMI port or DisplayPort monitor to the USB Type C port one at a time to verify the display issue.

Frequently Asked Questions (Continued)

Frequently Asked Questions	Possible Solution
Unable to read and write to an external SSD/HDD and optical (CD/DVD/Blue-ray) drive when connected to the CA Essential Micro Docking Station.	<ul style="list-style-type: none">- Some external SSD/HDD/Optical drives require higher power than the CA Essential Micro Docking Station can support.- It is recommended that you connect the external SSD/HDD/Optical drive to your computer directly.
Resolution on the monitor is lower than 4K @ 60Hz when connected to the HDMI or Type C port of the CA Essential Micro Docking Station.	<ul style="list-style-type: none">- Make sure your computer can support HDMI 2.0b, DisplayPort 1.4 or higher.- Make sure the HDMI cable being used supports HDMI 2.0b.
No video on the monitor attached to the CA Essential Micro Docking Station.	<ul style="list-style-type: none">- Check the video connection cables.- Disconnect the monitor from the CA Essential Micro Docking Station and wait for 10 seconds, then re-connect the monitor again.
Video on the attached monitors is distorted or corrupted.	<ul style="list-style-type: none">- Check the video connection cables.- Check and update the video resolution under Settings > Display > Display Resolution.
Video on the attached monitor is not displayed in extended mode.	<ul style="list-style-type: none">- Change the settings under Settings > Display > Multiple Displays.- Switch modes by pressing the Windows  Key + P.

Customer Support

If you have a question about your CA Essential Micro Docking Station our Customer Support Team wants to assist you.

Contact us at:

www.cyberacoustics.com/support/contact

Safety and Precautions

- Read and follow all instructions – All operating and use instructions should be followed.
- Protect the USB Type C AC Power Adapter and Cable from being pinched, particularly at the connectors. Unplug during lightning storms or when unused for long periods of time.
- Do not place near any heat sources such as radiators, heat registers, stoves, or other apparatus (including amplifiers) that produce heat.
- Do not make alterations to the Docking Station.
- Do not place near naked flame sources, such as lighted candles.
- Do not expose to excessive heat (e.g. from storage in direct sunlight, fire or the like)
- Use with Listed Information Technology Equipment only.

2020 Cyber Acoustics or its subsidiaries. All rights reserved. Cyber Acoustics and other trademarks are trademarks of Cyber Acoustics or its subsidiaries. Other trademarks may be trademarks of their respective owners.

Safety and Precautions (Continued)

Please take attention that changes or modification not expressly approved by the party responsible for compliance could void the user's authority to operate the equipment.

This device complies with Part 18 of the FCC Rules.

FCC Caution

This transmitter must not be co-located or operating in conjunction with any other Antenna or transmitter.

Safety and Precautions (Continued)

This device complies with Industry Canada license-exempt RSS standard(s). Operation is subject to the following two conditions:

- (1) this device may not cause interference, and
- (2) this device must accept any interference, including interference that may cause undesired operation of the device.

Le présent appareil est conforme aux CNR d'Industrie Canada applicables aux appareils radioexempts de licence. L'exploitation est autorisée aux deux conditions suivantes :

- (1) l'appareil ne doit pas produire de brouillage, et
- (2) l'utilisateur de l'appareil doit accepter tout brouillage radioélectrique subi, même si le brouillage est susceptible d'en compromettre le fonctionnement.

This equipment complies with FCC/IC RSS-102 radiation exposure limits set forth for an uncontrolled environment.

ce matériel est conforme aux limites de dose d'exposition aux rayonnements, FCC / CNR-102 énoncée dans un autre environnement.