



ST. LOUIS CHAPTER OF THE
AMERICAN SOCIETY OF LANDSCAPE ARCHITECTS

PROFESSIONAL, STUDENT AND NON-JURIED AWARDS

2021-2022

PROFESSIONAL,
STUDENT AND
NON-JURIED AWARDS

welcome back!



2021-2022

We have missed you! Last year, the onset of the Covid-19 pandemic waylaid our plans to hold an in-person Awards Event. We adapted, as Landscape Architects have always done - we celebrated virtually with videos and congratulatory emails but the fact remains that our members look forward to this awards event each year to say “hello” and to gather for celebration of the work, our region, and the profession.

As such, we are so pleased to be back together this year - safely - to celebrate all that we have come through. There has been exceptional work done in the past two years, people have held each other up in ways unseen in past years, and we have come together as a profession to support those who have discovered the joy of engaging nature and the out-of-doors with renewed vigor.

Congratulations to all entrants, recipients, partners, and collaborators represented in the Awards Event this year. We are really making a difference in our region, and we applaud you!

Michelle Ohle, ASLA Awards Chair

**PROFESSIONAL,
STUDENT AND
NON-JURIED AWARDS**

thank you, sponsors!



2021-2022

On behalf of the St. Louis Chapter of ASLA, I sincerely thank our 2021 sponsors for their continued support and flexibility as the chapter implemented a revised benefit package that focused virtual engagements. From virtual socials and CEUs to social media posts and sponsor specific newsletters. We had a mix of veteran sponsors that continued their dedicated support, like Gold Sponsors, Anova & Victory Stanley, Silver Sponsors Forms and Surfaces, Lighting Associates and Bronze sponsors Madrax. We gained back another dedicated sponsor Landscape Forms as our top tier Platinum sponsor for 2021. While we also gained a few new sponsors that filled our remaining two Gold sponsor spots with St. Louis Composting and LanDesign. Hydrodramatics also joined us at Silver, and Iron Age at our Bronze level. It is absolutely wonderful to provide opportunities of connection among our chapter members and sponsors. Thank you for your dedicated support!

Rebecca Brandl, Executive Director

platinum
sponsors

gold
sponsors



PROFESSIONAL, STUDENT AND NON-JURIED AWARDS



2021-2022

silver
sponsors

bronze
sponsors



FORMS+SURFACES®



PROFESSIONAL, STUDENT AND NON-JURIED AWARDS



2021-2022

PROFESSIONAL, STUDENT AND NON-JURIED AWARDS

SARA POETTING

chapter president

I'm so excited to be finally getting together to celebrate our chapter's achievements.

In the 2020-2021 term, we had to adapt many of our typical events to focus on keeping our members safe and healthy. We hosted our first virtual advocacy week, scheduling calls with local Missouri representatives to present how landscape architects protect public health, safety, and welfare. We also rolled out our annual awards online, recognizing the excellent work our colleagues and students have been doing. Presented in a series of videos to highlight each award, the event culminated in a virtual awards celebration. This last summer, the chapter hosted our "Summer Social" event in O'Day Park with much success. It was wonderful to see member's faces (in person!) for the first time in many months. In the fall, we kicked off the annual PARK(ing)



2021-2022

Day with a parklet installation in the Grove. I want to thank all our volunteers and partners who showed up and helped educate the public on the value of taking back space for pedestrians! Throughout the year the St. Louis chapter, partnering with our sponsors, also hosted fun virtual events including Trivia, Game Night, and CEU opportunities. This winter, our members braved the cold weather to visit the MOBOT Garden Glow.

Aside from our events, over the past two years we've made efforts to improve our chapter operations to improve member experience. We've redesigned our website and worked to streamline many of our chapter accounts to make it easier for

members to find the resources they need. We've also created a technology plan to assist transition new executive committee members and archive information.

I want to thank all our hard-working executive committee members who spend their time adding so much value to chapter membership. I especially want to thank our outgoing Trustee, Scott Emmelkamp for his dedication and support to myself and the rest of the chapter. His guidance has helped us through the several new transitions and initiatives the chapter has worked through over the past several years.

I am also excited for the future of our chapter as our President Elect Alexandra Mei and new Trustee Chris

Moon began their 2021-2022 terms.

Lastly, I want to say how grateful I am for our sponsors who have shown us so much flexibility and support these past two years. Their continued commitment to the chapter is what allows the St. Louis Chapter to meet its goals and provide education and outreach to our members.

I am excited by what is coming up in the 2021-2022 term. I look forward to connecting with members and continuing to serve as Chapter President. Thank you for a great two years!

Sara Poetting,
Chapter President

PROFESSIONAL, STUDENT AND NON-JURIED AWARDS



2021-2022

2021 CHAPTER EXCOM



PRESIDENT
sara poetting



PAST-PRESIDENT
derek don



TRUSTEE
scott emmelkamp



TREASURER
todd teuscher



SECRETARY
scott runde



ADVOCACY CHAIR
susan maag



EVENTS
kenneth brandl



COMMUNICATIONS
caroline finck



MEMBERSHIP
kaitlyn poehlein



EMERGING PROFESSIONALS
laurel harrington



AWARDS
michelle ohle



MEMBER AT LARGE
alexandra mei



MEMBER AT LARGE
brian burmeister



MEMBER AT LARGE
jonathan ryan



MEMBER AT LARGE
felipe denarvaez



MEMBER AT LARGE
jim davis

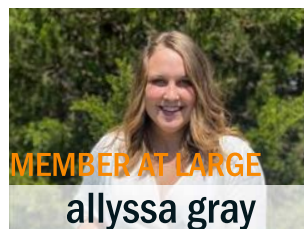
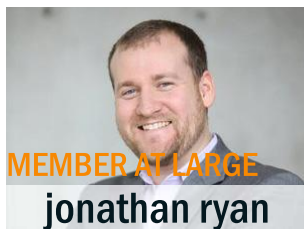
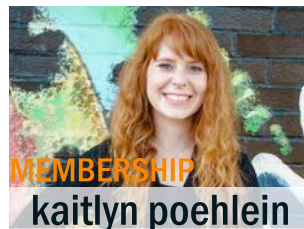


MEMBER AT LARGE
chris moon



EXECUTIVE DIRECTOR
rebecca brandl

2022 CHAPTER EXCOM



PROFESSIONAL, STUDENT AND NON-JURIED AWARDS

ASLA
ST. LOUIS

2021-2022



CHAPTER HAPPENINGS



**PROFESSIONAL,
STUDENT AND
NON-JURIED AWARDS**

CHRIS MOON
chapter trustee



2021-2022

As I start my path being the Trustee for the St Louis Chapter, I am excited about the direction ASLA is headed. From a national perspective, there are some great things happening with our new Leadership. One main item is the Strategic Plan which was presented at Conference on Landscape Architecture in Nashville, TN last fall. The main components of the strategic plan are Community, Connection, Innovation, Scale, and Voice. Some of the other items are ASLA's new partnership with Land8 and LABash; the new Women of Color Licensure program along with President Biden's appointment of Lisa E. Delplace, FASLA as the newest member of the U.S. Commission of Fine Arts.

Once again, there are some great things happening on the National perspective and looking forward to representing the St. Louis Chapter during my term.

Chis Moon, Chapter Trustee

PROFESSIONAL, STUDENT AND NON-JURIED AWARDS

SUSAN MAAG advocacy chair



2021-2022

Vigilance and participation are vital to protect licensure in Missouri. Advocacy Day 2022 marked our 10th year of meeting with state representatives in Jefferson City. Although small in numbers, nine landscape architects met with over thirty-five representatives to advocate for all Missouri landscape architects. We will always need your participation, either by allowing an employee to take a day off to join us or by personally participating in Advocacy Day 2023. This is worth your investment to keep our licensure strong and vibrant.

Efforts to deregulate and lower standards are very real and past personal connections have been key to licensure retention.

It is truly a team effort between practitioner and licensure organizations that allows a positive, equal opportunity environment for the landscape architecture profession to thrive.

Do your part and become involved! Commit yourself or an employee to joining our chapter for one day at the state capitol.

Remember, St. Louis ASLA spends substantial time and resources each year to defend licensure.

Please consider becoming a part of advocacy and a supporting member of ASLA. Contact Susan Maag – VP of Advocacy, susan@slmconsult.com for more information and thanks for your support!

Susan Maag, Advocacy Chair

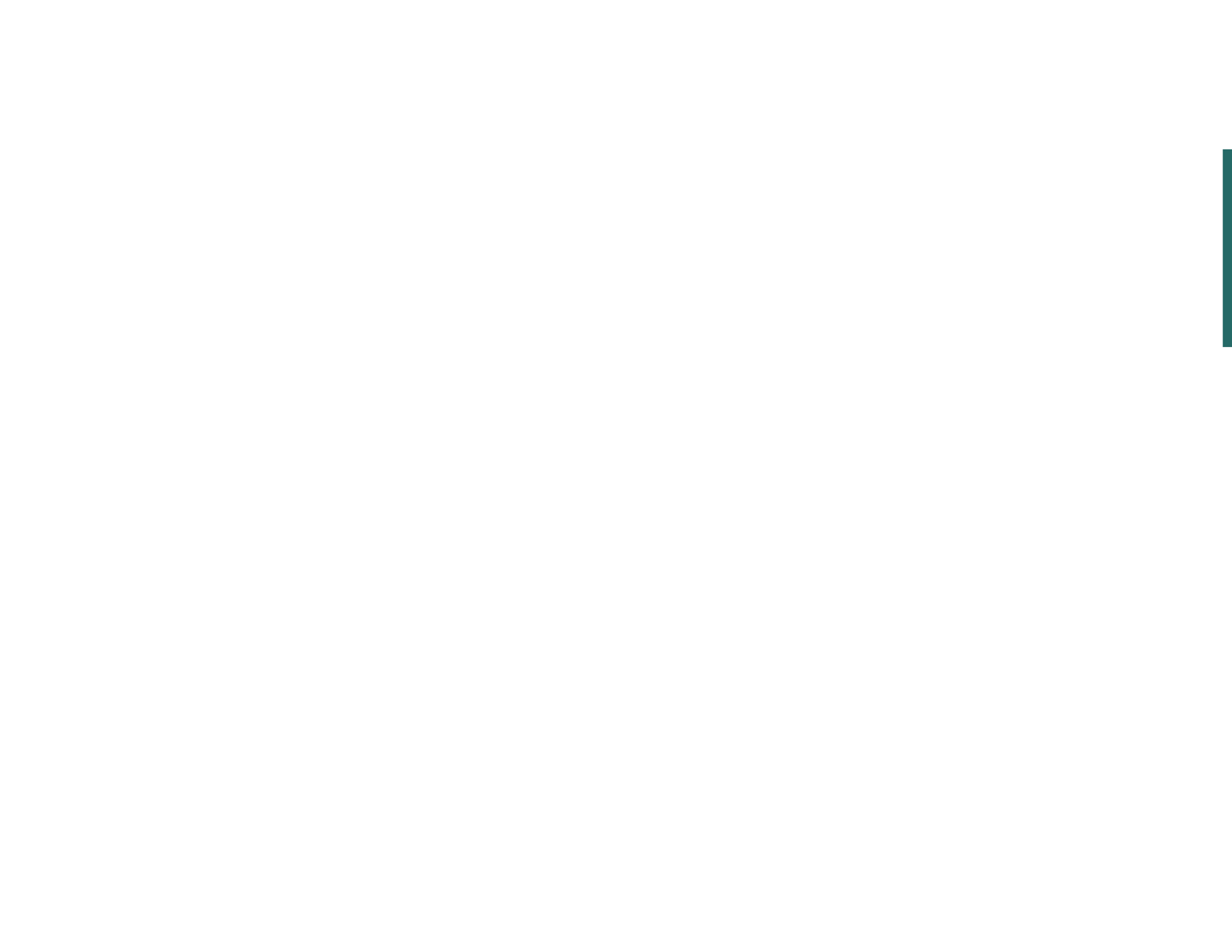




ST. LOUIS CHAPTER OF THE
AMERICAN SOCIETY OF LANDSCAPE ARCHITECTS

PROFESSIONAL, STUDENT AND NON-JURIED AWARDS

2021-2022



NON-JURIED AWARDS

civic stewardship

Acknowledging the contributions of public agencies, institutions, not-for-profits and individuals who have exhibited stewardship for the natural resources, communities, landscapes and built environment of the St. Louis region.

PROFESSIONAL,
STUDENT AND
NON-JURIED AWARDS



2021-2022

DAVID NEWBURGER

FROM THE LETTERS OF NOMINATION:

“David is a dedicated professional who has built an impactful and distinguished career, advocating and improving accessibility in buildings, streets, public spaces and facilities throughout the St. Louis community.”

**Richard T Bradley - President, Board of Public Service,
City of St. Louis**



DAVID NEWBURGER

PROFESSIONAL,
STUDENT AND
NON-JURIED AWARDS



ASLA
ST. LOUIS

2021-2022

FROM THE LETTERS OF NOMINATION:

“David enjoys a reputation for being strong but fair, helping consultants to meet accessibility codes and project goals, while allowing projects to move toward implementation.”

William Reininger, Jr. - Executive Director, Tower Grove Park





NON-JURIED AWARDS

bob goetz award

Acknowledging a chapter member's career and contributions to the profession of Landscape Architecture.

PROFESSIONAL,
STUDENT AND
NON-JURIED AWARDS



2021-2022

SUE WIEST

PROFESSIONAL,
STUDENT AND
NON-JURIED AWARDS



ASLA
ST. LOUIS

2021-2022

FROM THE LETTERS OF NOMINATION:

“Her work ethic and willingness to go beyond what is necessary to complete a job is foundational to her success as a founder of DTLS. Sue has mastered the science, art, and craft of Landscape Architecture.”

Ted Spaid - Partner, Founder, SWT Design

“Sue is a true leader and her impact on our region is known and respected by many. Her effort and contribution to our public realm is relentless.

She is an inspiration to all who have had the pleasure to work with her.”

Chip Crawford - Senior Principal, Lamar Johnson Collaborative



non-juried awards bob goetz award





611-02



PROFESSIONAL, STUDENT AND NON-JURIED AWARDS

ASLA
ST. LOUIS

2021-2022

non-juried awards bob goetz award

SUE WIEST







ST. LOUIS CHAPTER OF THE
AMERICAN SOCIETY OF LANDSCAPE ARCHITECTS

PROFESSIONAL, STUDENT AND NON-JURIED AWARDS

2021-2022



Stela | Structura



Flint Bollards | Louis Poulsen

In the sky or on the ground...
We've got you covered.



www.laiweb.net



“Beautiful site furnishings that are durable and functional should be a standard, not a premium”



1.800.448.7931 | www.madrax.com



Take-Out

landscapeforms®



Set the Mood

Designed by Rodrigo Torres, Take-Out reimagines the concept of the connected seating table through the lens of versatility. Light enough to be picked up, arranged and rearranged, Take-Out opens up new ways for people to connect in outdoor spaces.

Stacy Ernst, Site Source

816-678-2004
stacye@landscapeforms.com

816-444-4376
sitesource@landscapeforms.com

DESIGN. CULTURE. CRAFT.



STUDENT AWARDS

AWARDS

Student work serves to inspire, drive, and irrevocably change and evolve the profession of Landscape Architecture. Professional engagement with students through studio, internships, and organization activities assists both students and practitioners - we all learn from each other.

PROFESSIONAL,
STUDENT AND
NON-JURIED AWARDS



2021-2022

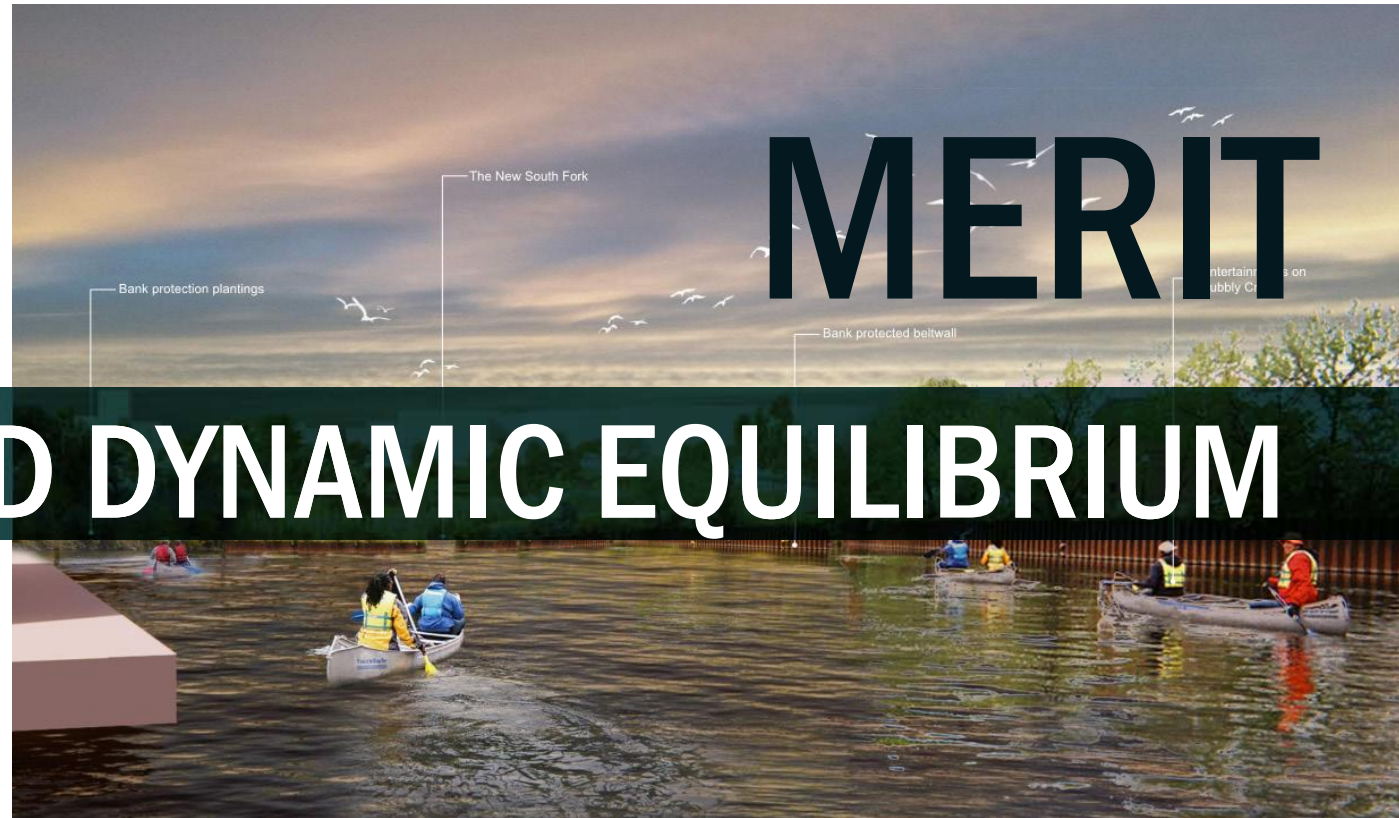
JURY SAYS: “Really beautiful, robust analysis drawings - dense with information and evocative.”



PROFESSIONAL, STUDENT AND NON-JURIED AWARDS

ASLA
ST. LOUIS

2021-2022

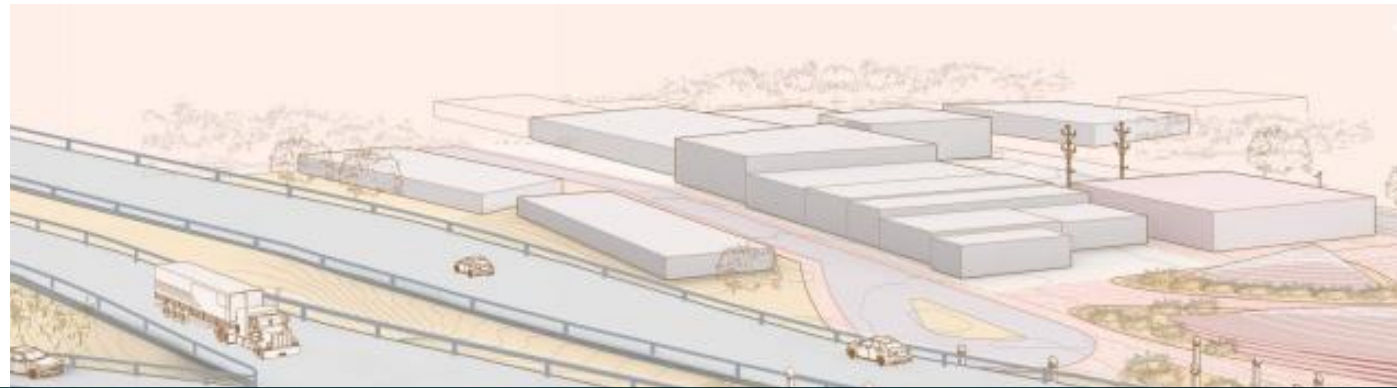


BROWNFIELD DYNAMIC EQUILIBRIUM

Annie Liu

JURY SAYS: “Really well done - you should be very proud of your work here!”



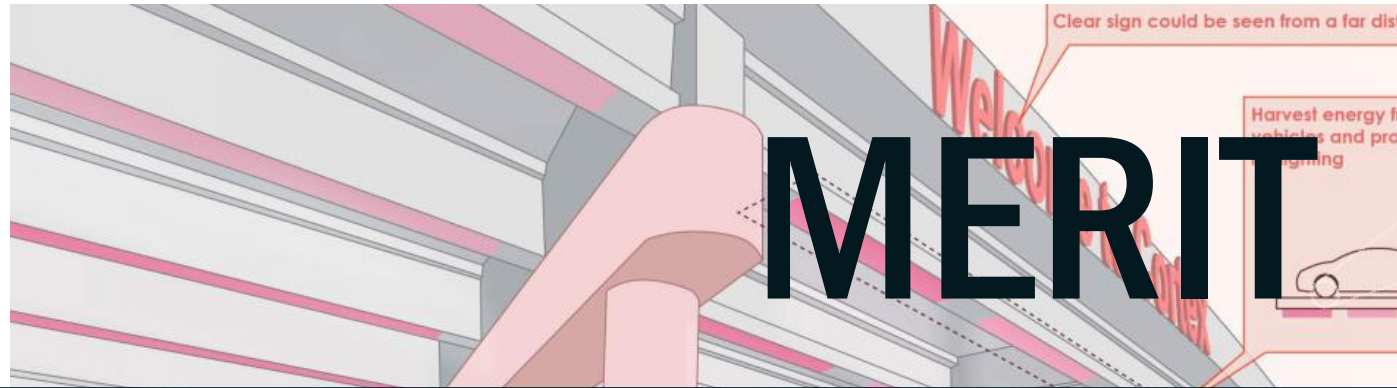


JURY SAYS: “Capturing energy from movement is a very interesting idea and you have invested time into trying to capture it in many ways here.”

PROFESSIONAL, STUDENT AND NON-JURIED AWARDS

ASLA
ST. LOUIS

2021-2022



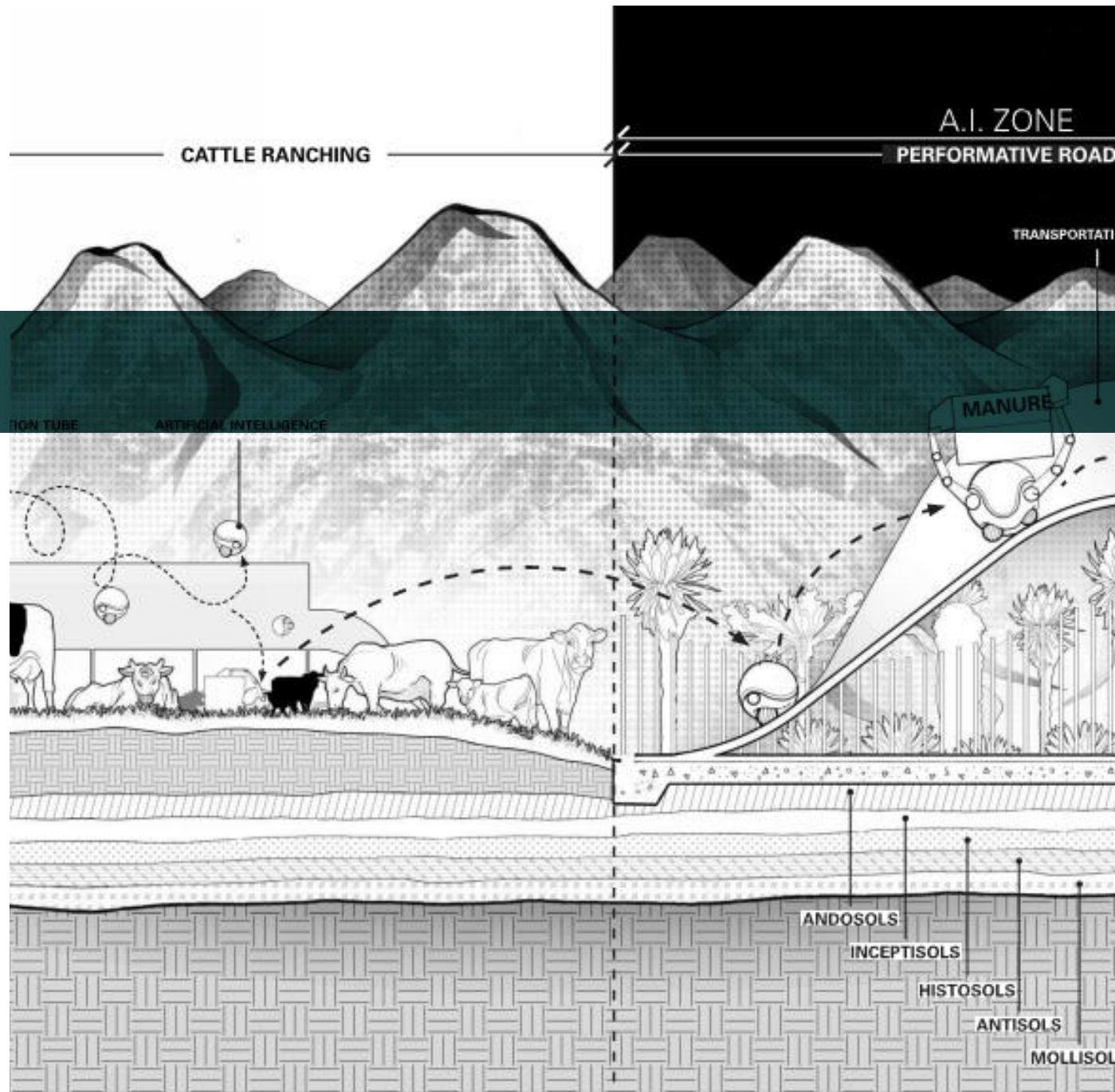
MERIT

REGENERATION LANDSCAPE

Weicong Huang

JURY SAYS: “These graphics are beautiful, contemporary, forward-thinking, and very clear - we get it!”





JURY SAYS: “Amazing graphics!! Very innovative look at changes to agricultural practices and effects on landscape.”

PROFESSIONAL, STUDENT AND NON-JURIED AWARDS

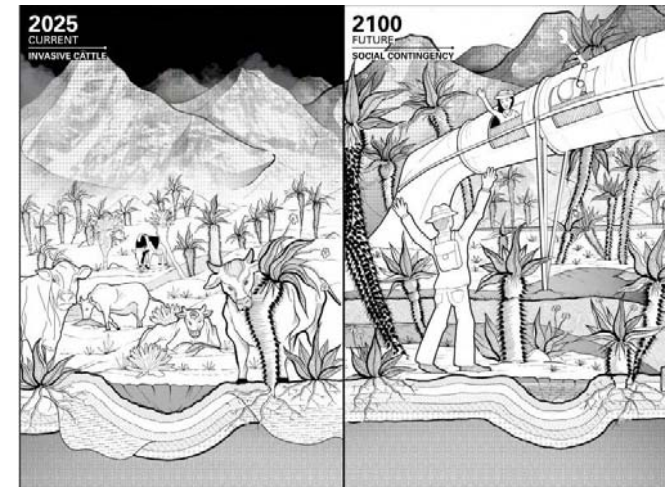
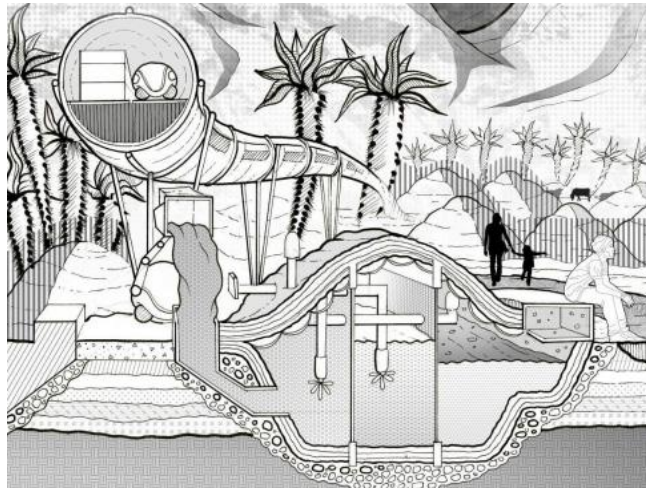
ASLA
ST. LOUIS

2021-2022

CATTLE FUTURES

Chinh Pham

JURY SAYS: “Impressive video, very well developed and full of additional detail narrating overall project.”



JURY SAYS: “The entrant brings the jury into the decision making process from analysis to concept - to implementable sketches.”



PROFESSIONAL, STUDENT AND NON-JURIED AWARDS

ASLA
ST. LOUIS

2021-2022



MERIT

RECOLLECTION AND RESPONSE

Shuya Zhang



JURY SAYS: “This clarity is greatly appreciated and acknowledged. The graphics included here are beautiful and relatable.”



PROFESSIONAL,
STUDENT AND
NON-JURIED AWARDS

ASLA
ST. LOUIS

2021-2022



HONOR

TOWARDS A CAMPUS OF SYMBIOTIC ECOLOGIES

Nanqi Wang and
Jingyang Shi

JURY SAYS: “Amazing graphics and renderings throughout, very clear and thoughtful.”



PROFESSIONAL,
STUDENT AND
NON-JURIED AWARDS

ASLA
ST. LOUIS

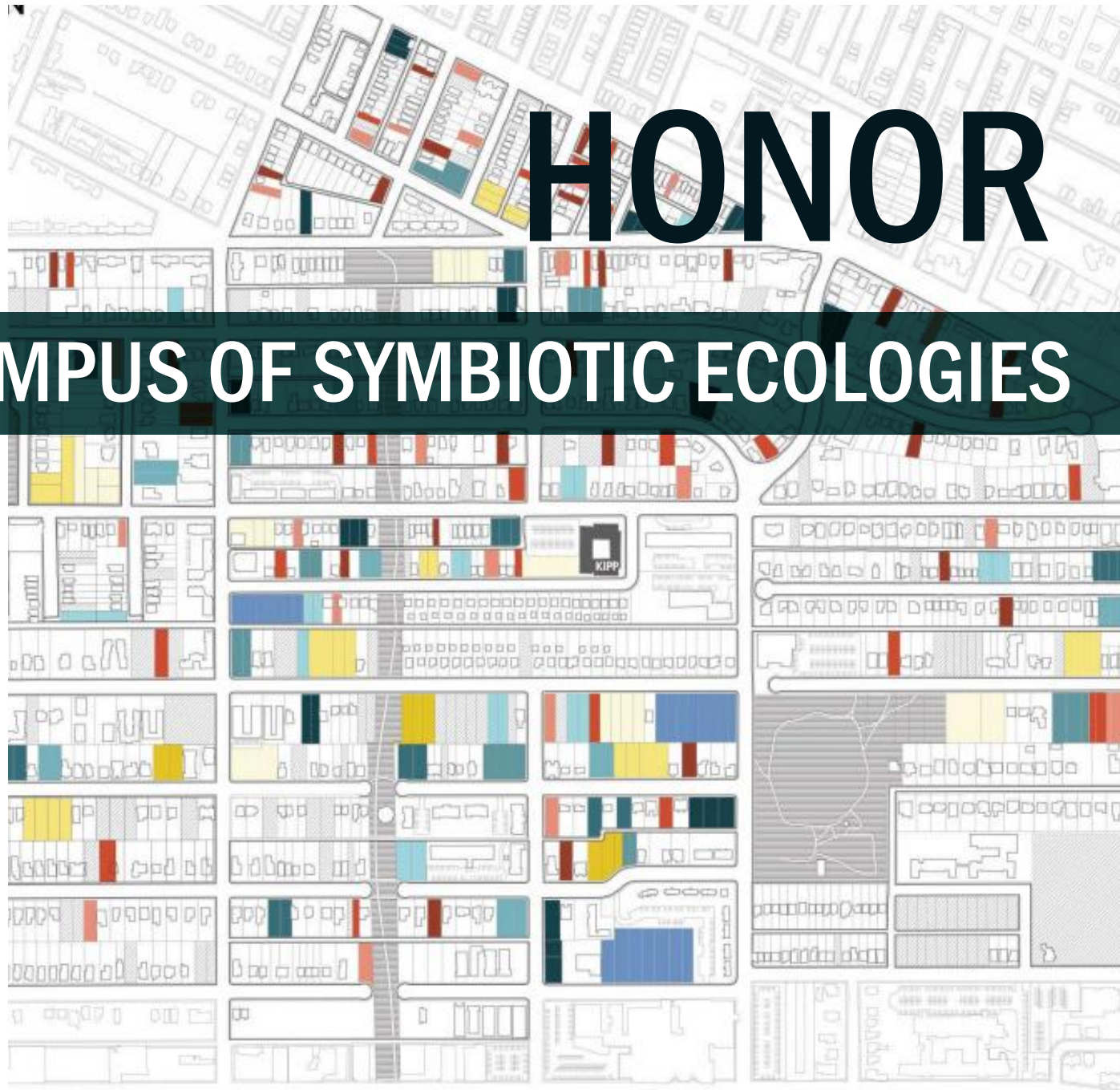
2021-2022

HONOR

TOWARDS A CAMPUS OF SYMBIOTIC ECOLOGIES

Nanqi Wang and
Jingyang Shi

JURY SAYS: “The
concept of connectivity
and various careful
educational insertions
seems nuanced and
considered.”







ST. LOUIS CHAPTER OF THE
AMERICAN SOCIETY OF LANDSCAPE ARCHITECTS

PROFESSIONAL, STUDENT AND NON-JURIED AWARDS

2021-2022

DECORATIVE GRATING
& SITE FURNISHINGS

MINNIONE

Tree Grate
Tree Guard
Custom Bench



Your source for decorative drain grates,
tree grates, site furnishings and custom
architectural castings.

Represented by: ParkPacific
888-460-7275 | sales@parkpacific.com

IRONAGEGRATES.COM

*Your Vision
Our Expertise!*



- From Concept
through Construction
- Complete Water Feature
Design Services and
Equipment Packages

Hydro
Dramatics

(314) 231-9806 |

info@hydrodramatics.com
www.hydrodramatics.com

FORMS+SURFACES®
www.forms-surfaces.com



RADIA



LINIA



TONYO

Jackie Kolpek-Dietz | 630.207.9908
jackie.dietz@forms-surfaces.com

For Denver, smart waste receptacles mean smart savings.



VICTOR STANLEY RELAY™

STREET LEVEL SENSING™ & WASTE CONTROL SERVICE

Bins equipped with Relay sensors provide the city of Denver with accurate, real-time data on fill level, area environmental conditions, pedestrian traffic and much more. This means more efficient collection, saving the city time and money on fewer unnecessary stops, and providing valuable insights for future planning.

Contact Becky McNamara at beckym@victorstanley.com

VICTOR  STANLEY®

VICTORSTANLEY.COM



PROFESSIONAL AWARDS ROTATING CATEGORY

the places we live

It took a global pandemic, but people are living more and more of their lives outside - and Landscape Architects are helping to form the backgrounds to our daily lives.

PROFESSIONAL,
STUDENT AND
NON-JURIED AWARDS



2021-2022

MERIT

SELMA FARM

DTLS Landscape Architecture

PROFESSIONAL,
STUDENT AND
NON-JURIED AWARDS



ASLA
ST. LOUIS

2021-2022





JURY SAYS: “There is a thoughtfulness of visitor experience that shines throughout the entirety of the property. Well done.”







MERIT

SELMA FARM

DTLS LANDSCAPE ARCHITECTURE

PROFESSIONAL,
STUDENT AND
NON-JURIED AWARDS



2021-2022



MERIT

GRAND FLATS

DTLS Landscape Architecture

PROFESSIONAL,
STUDENT AND
NON-JURIED AWARDS



ASLA
ST. LOUIS

2021-2022



JURY SAYS: “The small space is effectively allocated to program needs. The quality of the space is high and well thought-out.”







MERIT



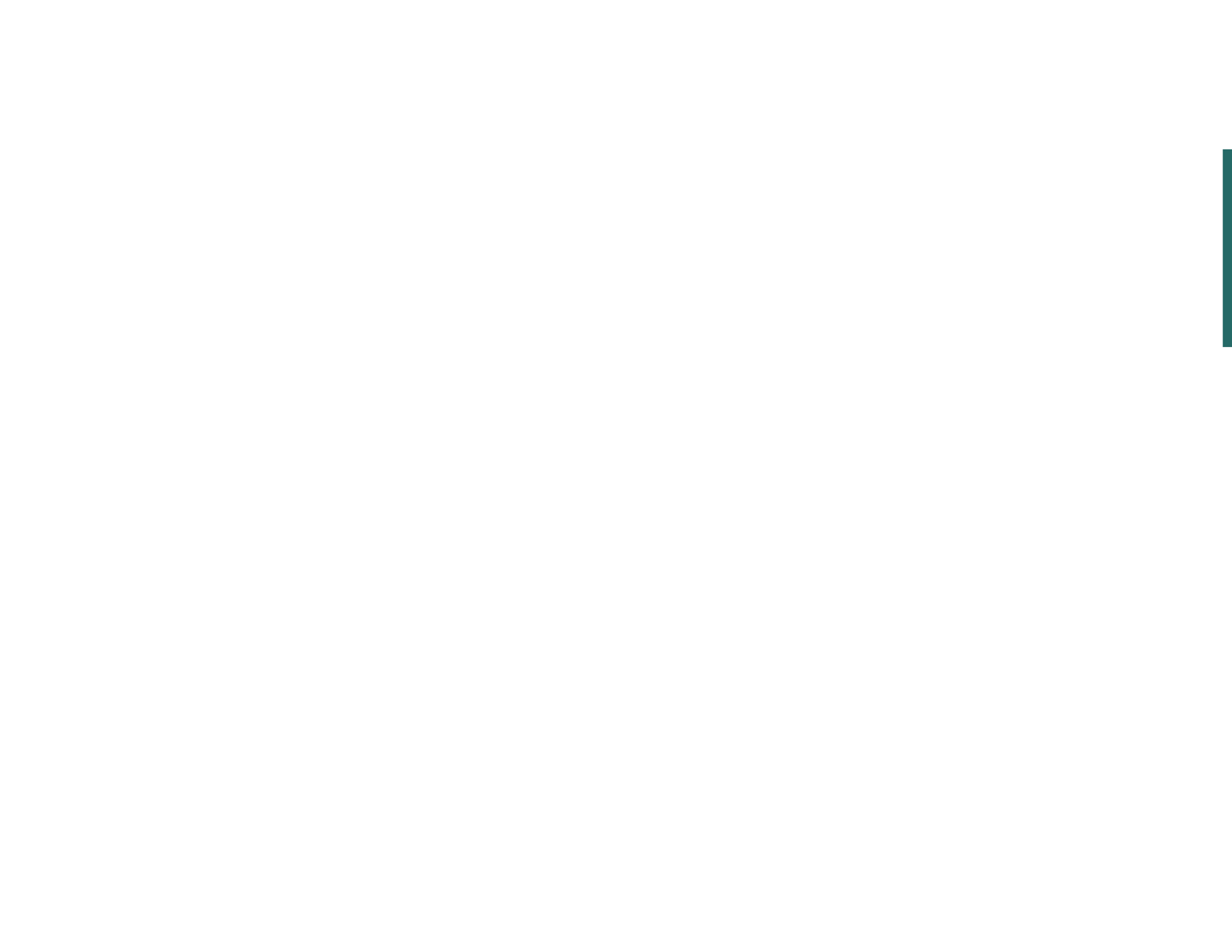
GRAND FLATS

DTLS Landscape Architecture

PROFESSIONAL,
STUDENT AND
NON-JURIED AWARDS



2021-2022



PROFESSIONAL AWARDS

Analysis, Planning, Research and Communications

Recognizes the activities of landscape architecture professionals which lead to, guide or evaluate future landscape architectural design, including development plans, government policies, programs and legislature, environmental analysis and various landscape analysis activities.

PROFESSIONAL,
STUDENT AND
NON-JURIED AWARDS



2021-2022

Forest Park

Baruch Jewish Hospital

MERIT

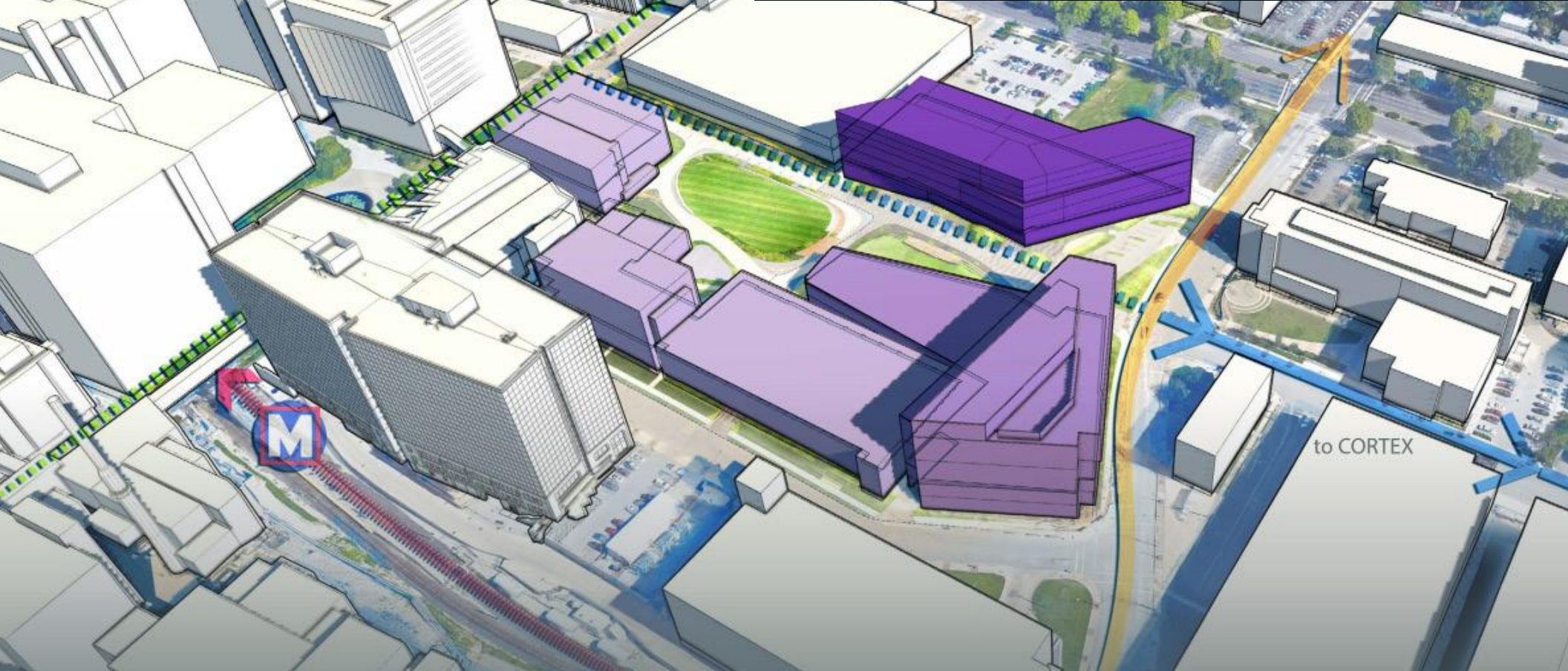
UHSP MASTERPLAN Lamar Johnson Collaborative

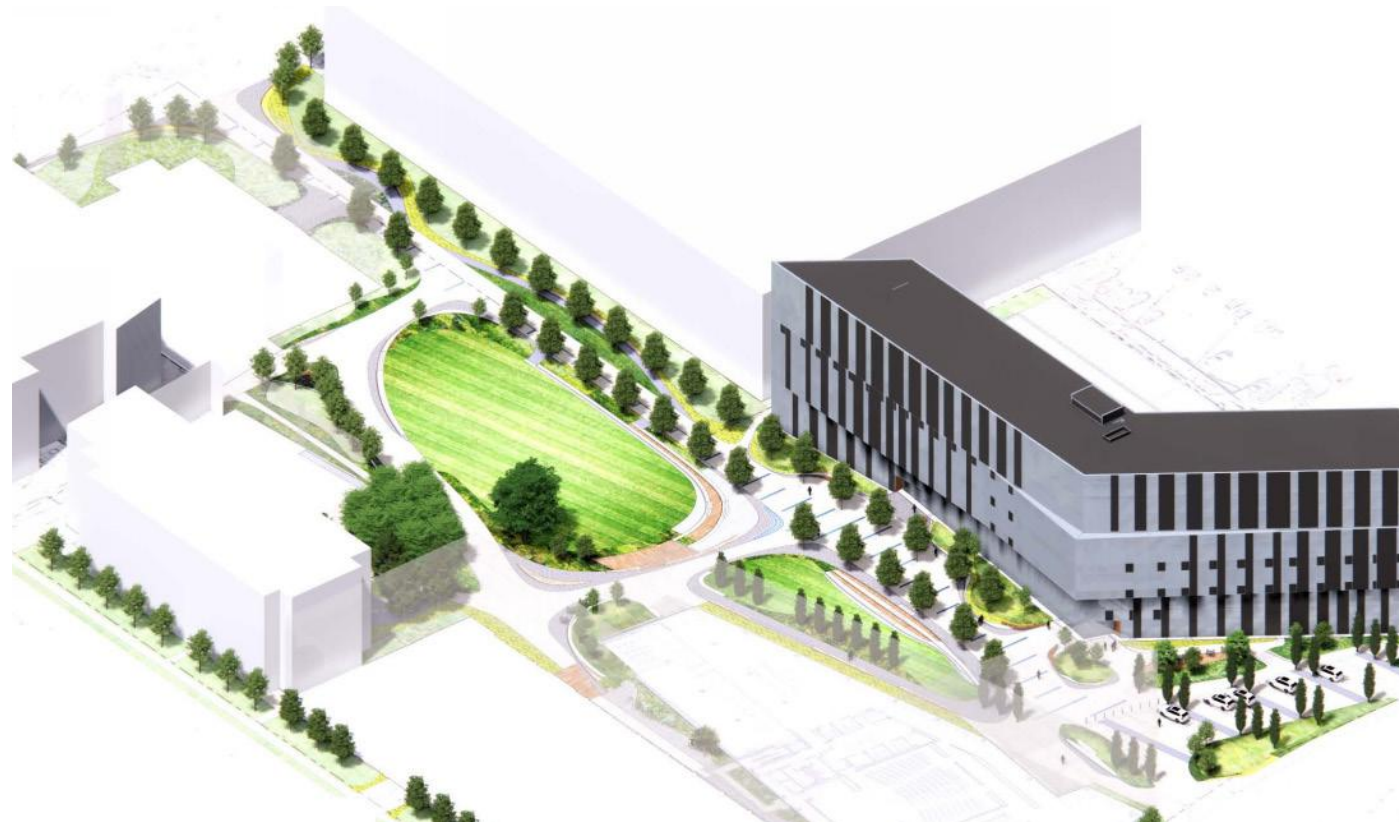
PROFESSIONAL, STUDENT AND NON-JURIED AWARDS



ASLA
ST. LOUIS

2021-2022





JURY SAYS: “Excellent submission with consistently high graphic quality from analysis, concept plans and diagrams through renderings. Nice work!”





arrival plaza

Focused on the creation of a new dynamic campus center for students, the campus expansion reorients its public entry and provides a forward thinking presence to the community.



MERIT

UHSP MASTERPLAN

Lamar Johnson Collaborative

PROFESSIONAL,
STUDENT AND
NON-JURIED AWARDS



2021-2022

BRENTWOOD BOULEVARD

MANCHESTER ROAD

MERIT

PROFESSIONAL, STUDENT AND NON-JURIED AWARDS



ASLA
ST. LOUIS

2021-2022

BRENTWOOD BOUND Planning Design Studio



SOCCER
PITCH

DESTINATION
PLAYGROUND

MSD

ENTRY

COMFORT
STATION

MSD

PARKING
LOT

EVENT LAWN

DOG PARK

ROGERS' GREENWAY



JURY SAYS: “There’s a lot to say about this project that’s outstanding: Flooding. Greenways. Community. Storm & Sanitary. Great idea!”





LAKE - AMPHITHEATER
Brentwood Bound



MERIT



PLAYGROUND

Brentwood Bound

BRENTWOOD BOUND

Planning Design Studio

PROFESSIONAL,
STUDENT AND
NON-JURIED AWARDS



ASLA
ST. LOUIS

2021-2022

MERIT

PROFESSIONAL, STUDENT AND NON-JURIED AWARDS



ASLA
ST. LOUIS

2021-2022

DRONE BY DESIGN

Lamar Johnson Collaborative

FLIGHT PATH



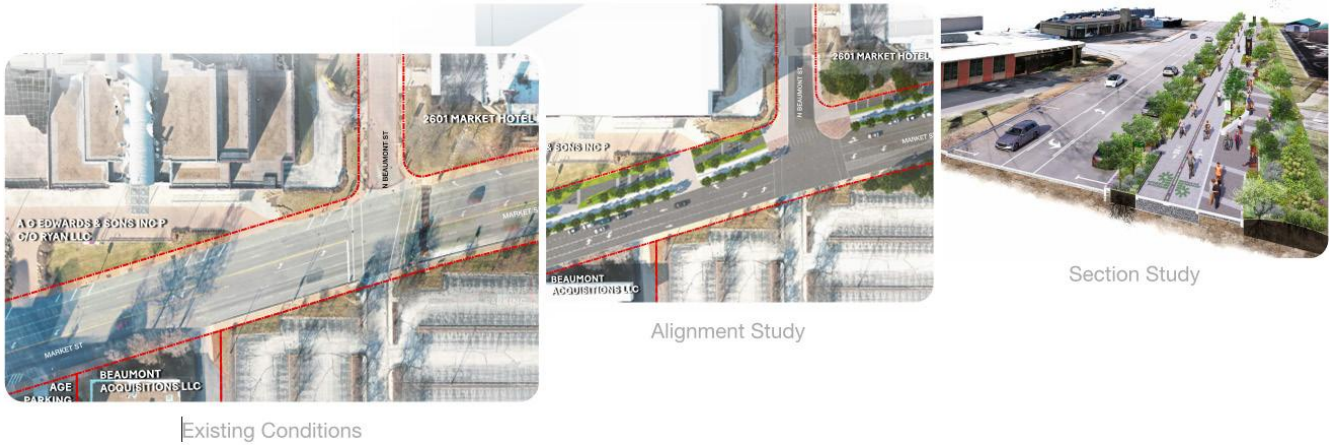
DETAIL

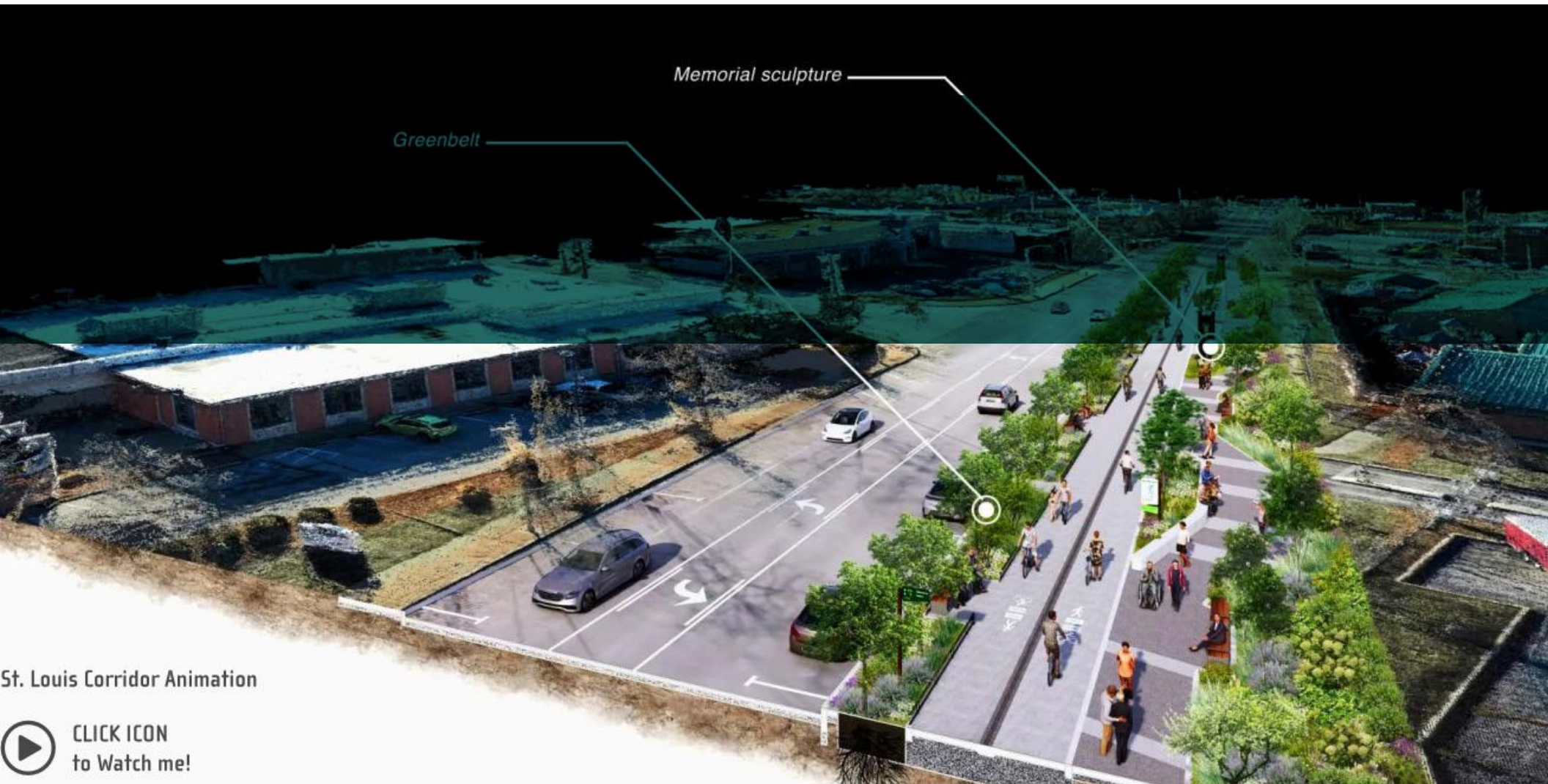


250'



JURY SAYS: “Very compelling research and implementation. I think this has great potential and would want to sign up for training!”





Memorial sculpture

Greenbelt

St. Louis Corridor Animation



CLICK ICON
to Watch me!



SOUTH VIEW



DRONE BY DESIGN

Lamar Johnson Collaborative

PROFESSIONAL,
STUDENT AND
NON-JURIED AWARDS



2021-2022

HONOR

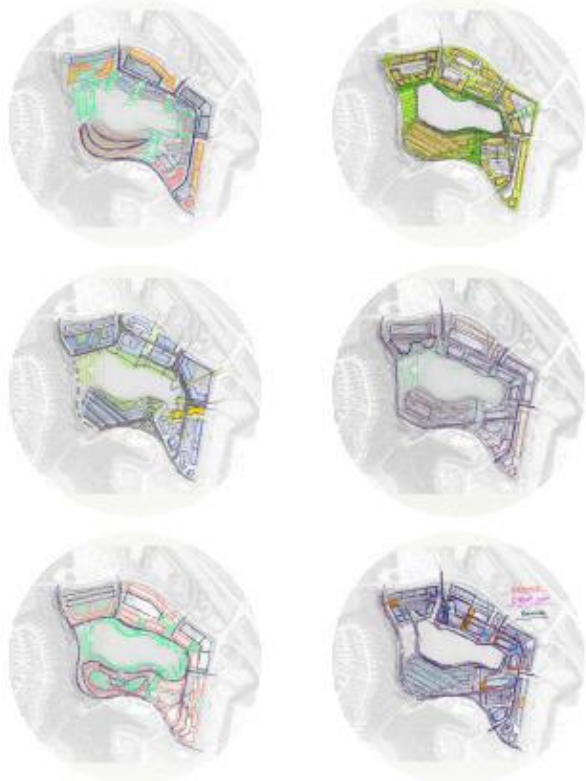
WILDHORSE VILLAGE MASTERPLAN Lamar Johnson Collaborative

PROFESSIONAL,
STUDENT AND
NON-JURIED AWARDS

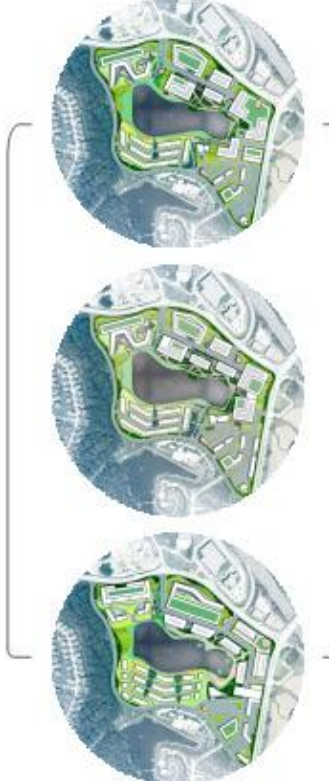


ASLA
ST. LOUIS

2021-2022



Early Concept Iterations



Refinement



Final Masterplan



JURY SAYS: “A very comprehensive master planning proposal with consistent, high-quality in all phases of design. Nice work!”



MATERIAL PALETTE

L A W N

U N D E R S T O R Y

T R E E C A N O P Y

R I P R A P

P E R M E A B L E P A V E R S

W O O D D E C K

S T O N E R E T . W A L L

S T O N E S E A T W A L L

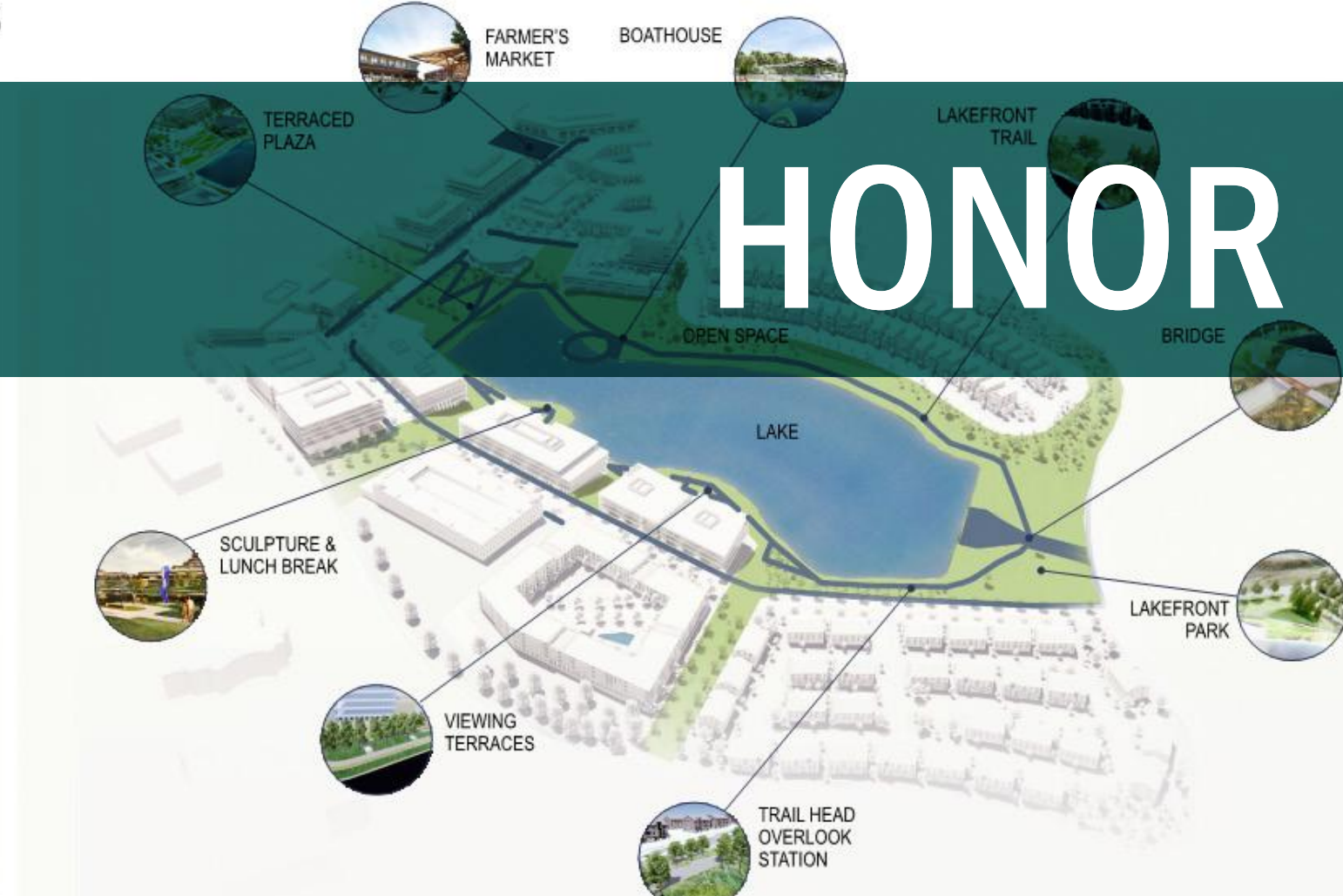
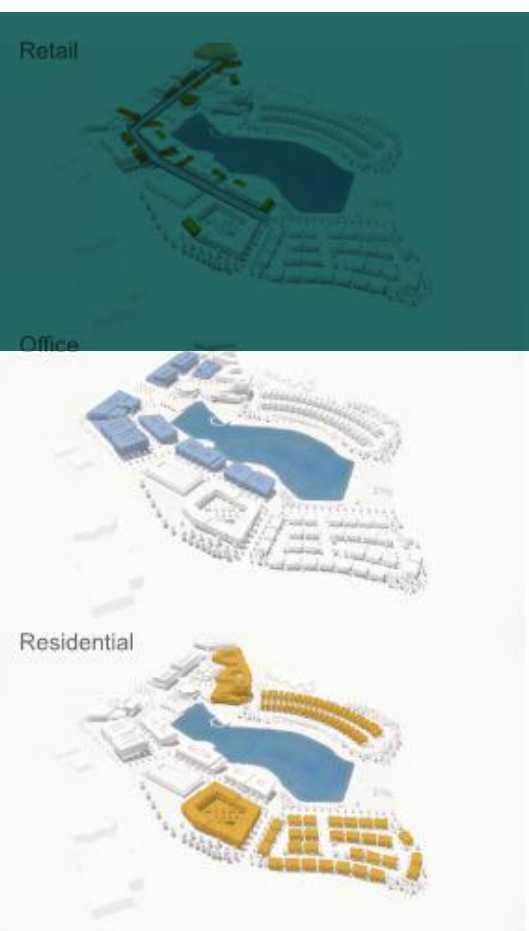
C O N C R E T E W A L K

G R A N I T E C H A T

S T O N E S T E P S



SHARED AMENITIES



WILDHORSE VILLAGE MASTERPLAN

Lamar Johnson Collaborative

PROFESSIONAL,
STUDENT AND
NON-JURIED AWARDS



2021-2022



PROFESSIONAL AWARDS

design: unrealized

Recognizes excellence in design thinking and methodology for site-scale projects for which implementation will not occur.

PROFESSIONAL,
STUDENT AND
NON-JURIED AWARDS



2021-2022



HONOR

OAK BROOK PRESERVE MASTER PLAN

Lamar Johnson Collaborative

PROFESSIONAL,
STUDENT AND
NON-JURIED AWARDS



ASLA
ST. LOUIS

2021-2022

ZONE 4: RESIDENCY

Leveraging a Conservation Easement, townhomes assemble in block fashion; aggregated to create an urban streetfront, each residence captures a view to the forest external or meandering trails and playscapes internal.



JURY SAYS: “Really stellar graphics. Clean, clear, concise. Definitely tells the story.”







HONOR



OAK BROOK PRESERVE MASTER PLAN

Lamar Johnson Collaborative

PROFESSIONAL,
STUDENT AND
NON-JURIED AWARDS



2021-2022



ST. LOUIS COMPOSTING

Enriching the Soil Naturally Since 1992

**PROUD TO
SUPPORT THE
MEMBERS OF**



ASLA
ST. LOUIS

COMPOST

STA CERTIFIED & OMRI LISTED

SOILS

PREMIUM AND CUSTOM BLENDS

MULCH

NATURAL & COLORED MULCH

**Organic-Lock™: Pathway Materials for
Landscape Architects**  Organic-Lock

www.stlcompost.com

NEW

Aluminum Planters

Dan Schwermer
314-680-2499
dan.s@anovafurnishings.com

ANOVA[®]





PROFESSIONAL AWARDS

design: built

Recognizes site-specific works of landscape architecture. This category is for built works in landscape architectural design.

PROFESSIONAL,
STUDENT AND
NON-JURIED AWARDS



2021-2022



MERIT

PRESBYTERIAN CHAPEL GARDEN
SWT Design

PROFESSIONAL,
STUDENT AND
NON-JURIED AWARDS



ASLA
ST. LOUIS

2021-2022



JURY SAYS: “Really well done! I love the flowing bedlines. Of course, that Instagrammable team of sculptures - what a great





MERIT



PRESBYTERIAN CHAPEL GARDEN

SWT Design

PROFESSIONAL,
STUDENT AND
NON-JURIED AWARDS



2021-2022

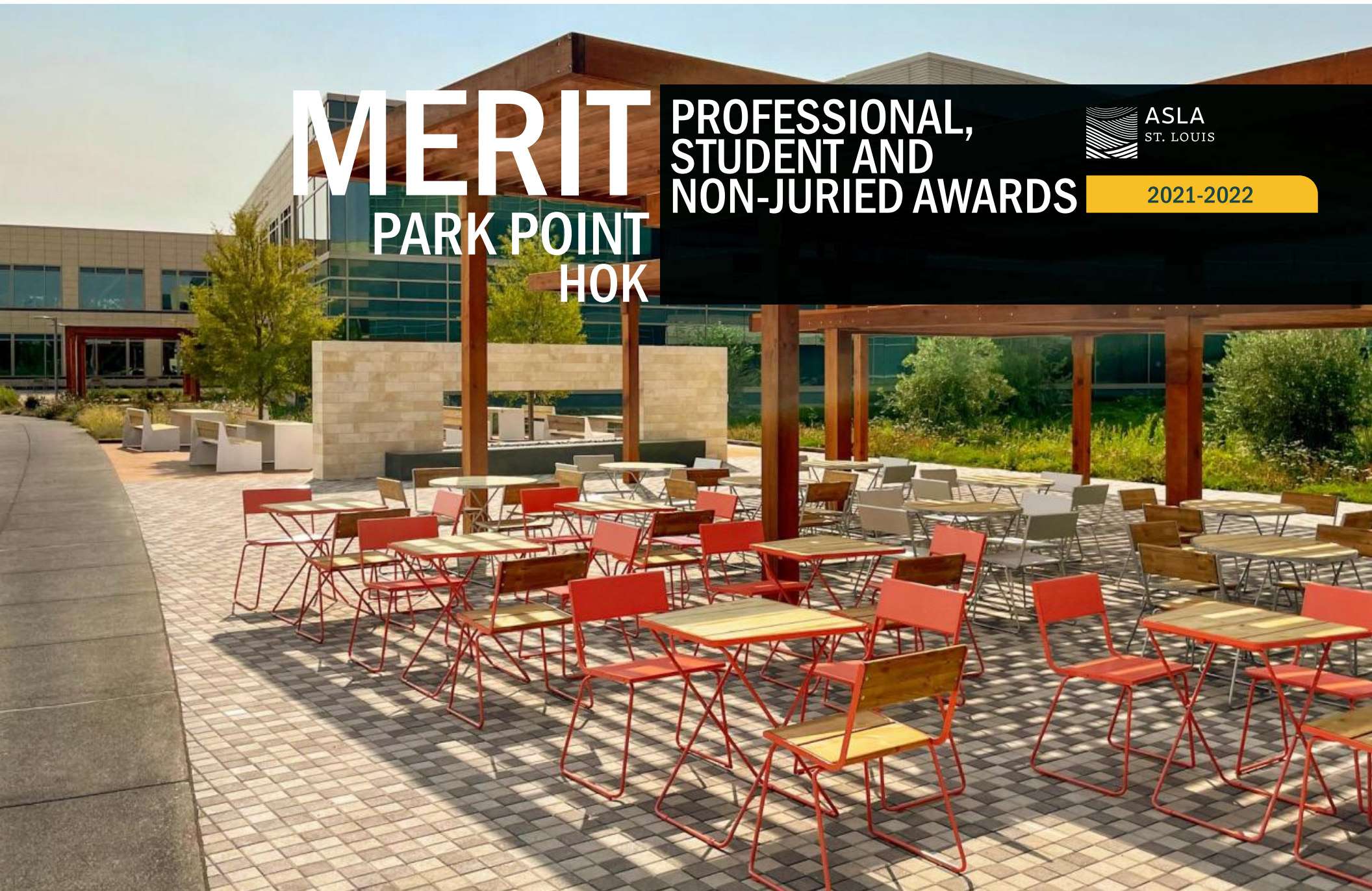
MERIT PARK POINT HOK

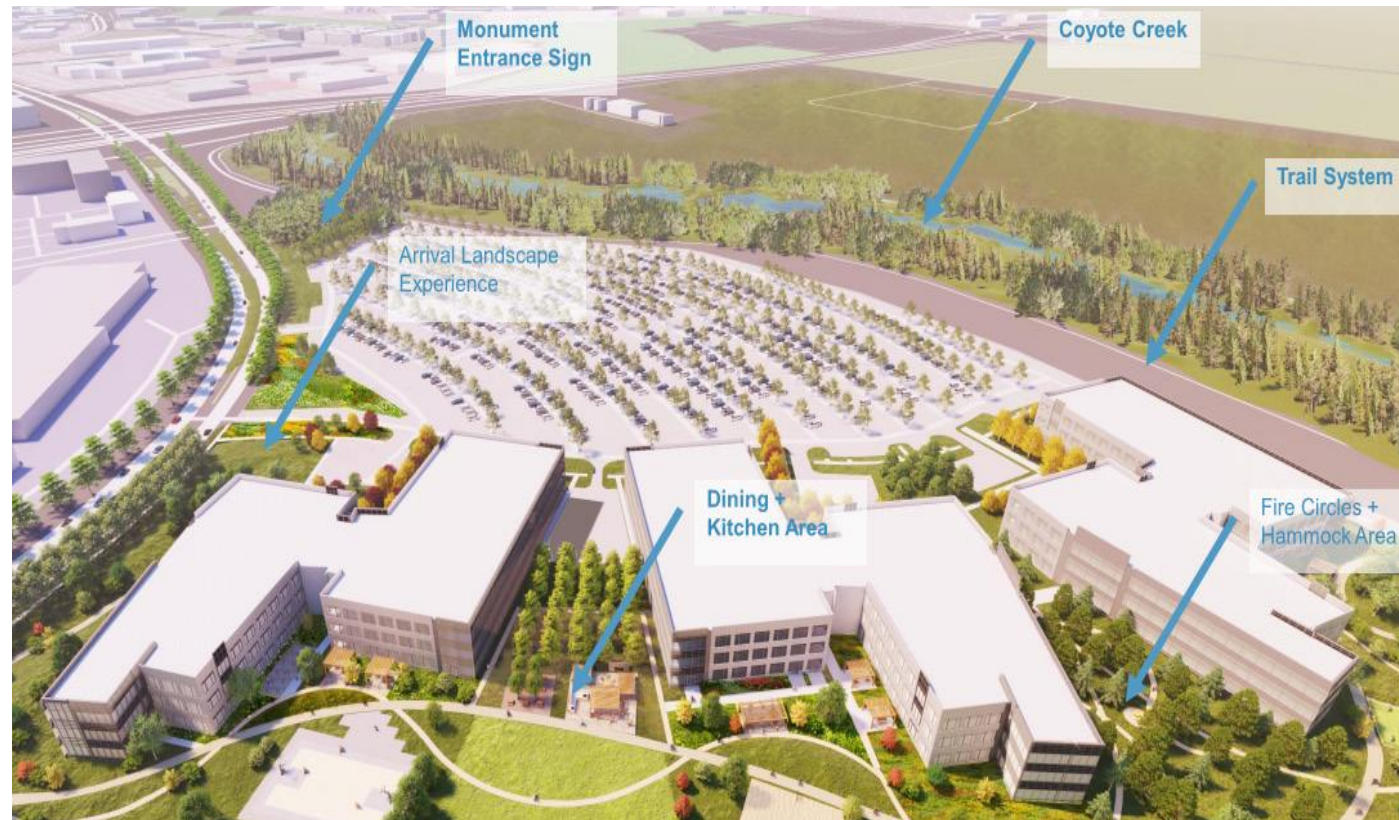
PROFESSIONAL,
STUDENT AND
NON-JURIED AWARDS



ASLA
ST. LOUIS

2021-2022





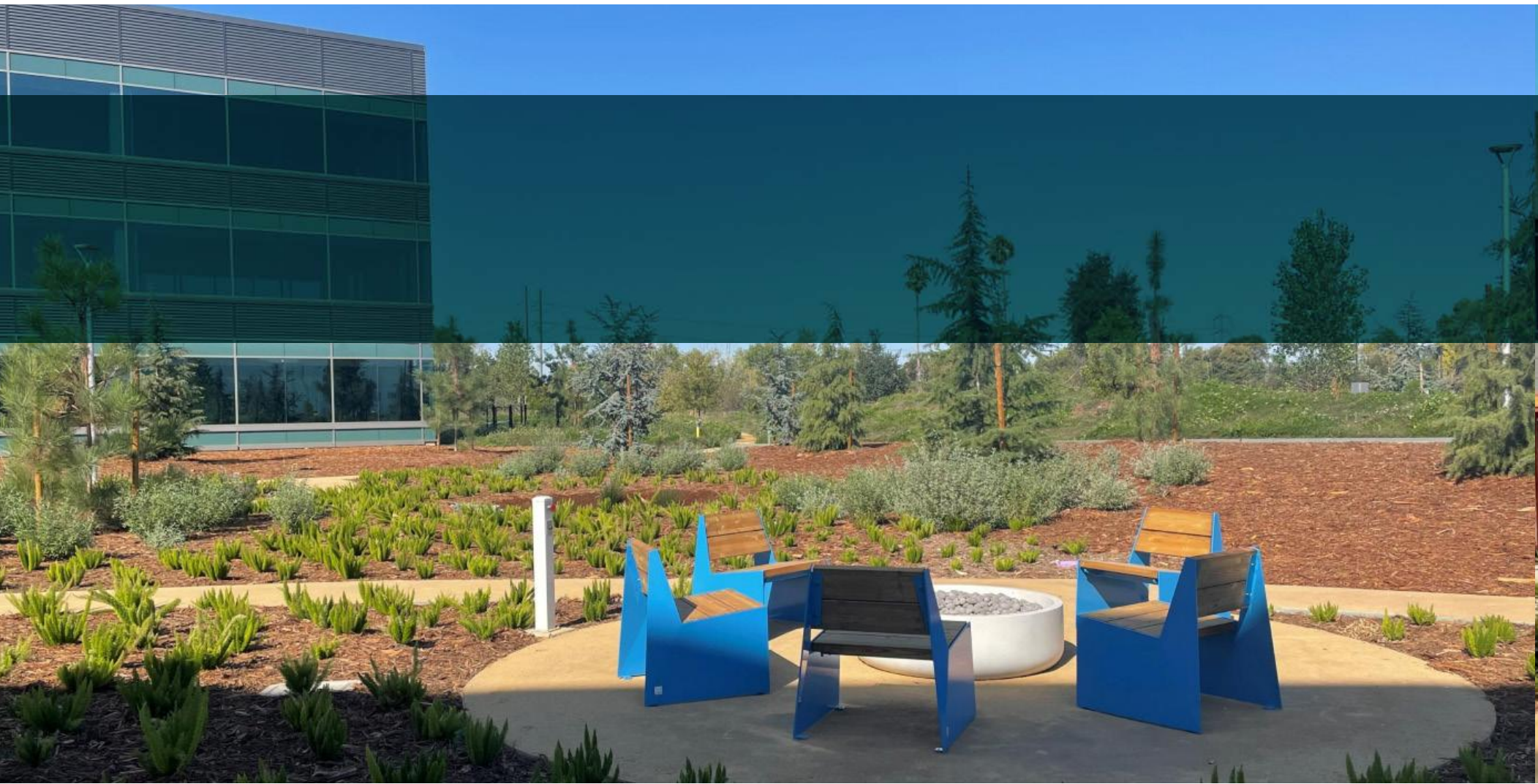
JURY SAYS: “The design creates many opportunities for the staff and visitors to both work and play.”



As you near the Hammocking Area, you are immersed in an ecologically restored and site landscape and users framed by sculpted topography and native vegetation that captures Diablo Mountain Plateau into the landscape.



As you approach the site via the Trail Corridor in Coyote Creek, you are greeted by a lush, green landscape. The site is framed by sculpted topography and native vegetation that captures Diablo Mountain Plateau into the landscape.





MERIT

PARK POINT

HOK

PROFESSIONAL,
STUDENT AND
NON-JURIED AWARDS



ASLA
ST. LOUIS

2021-2022



MERIT

STLCC-FOREST PARK CNHS
DTLS Landscape Architecture

PROFESSIONAL,
STUDENT AND
NON-JURIED AWARDS



ASLA
ST. LOUIS

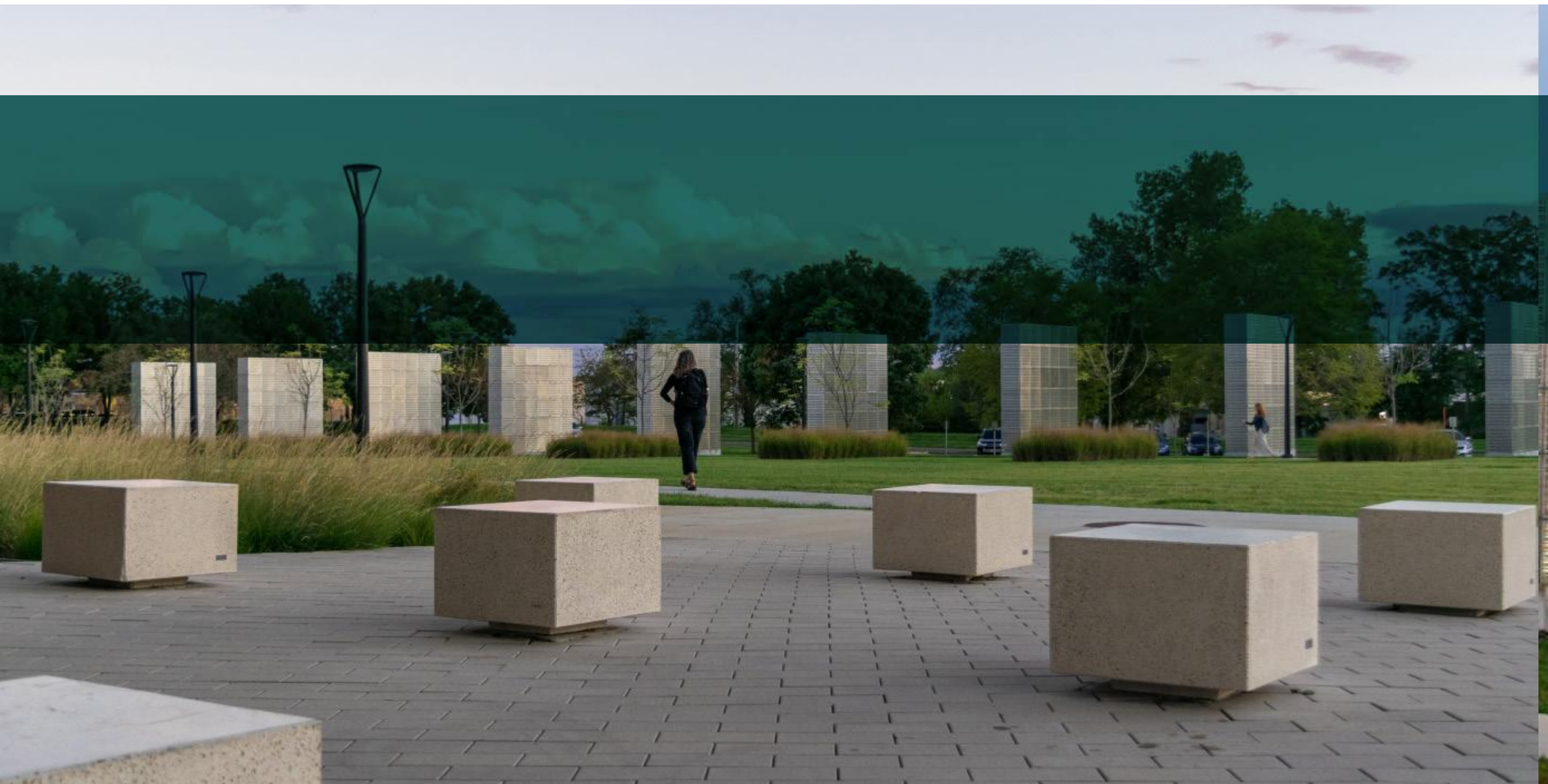
2021-2022





JURY SAYS: “This project is a great enhancement to the campus. The effective use of sculpture and plantings make it







MERIT

STLCC-FOREST PARK CNHS

DTLS Landscape Architecture

PROFESSIONAL,
STUDENT AND
NON-JURIED AWARDS



2021-2022

HONOR

1771 N STREET
HOK

PROFESSIONAL,
STUDENT AND
NON-JURIED AWARDS



ASLA
ST. LOUIS

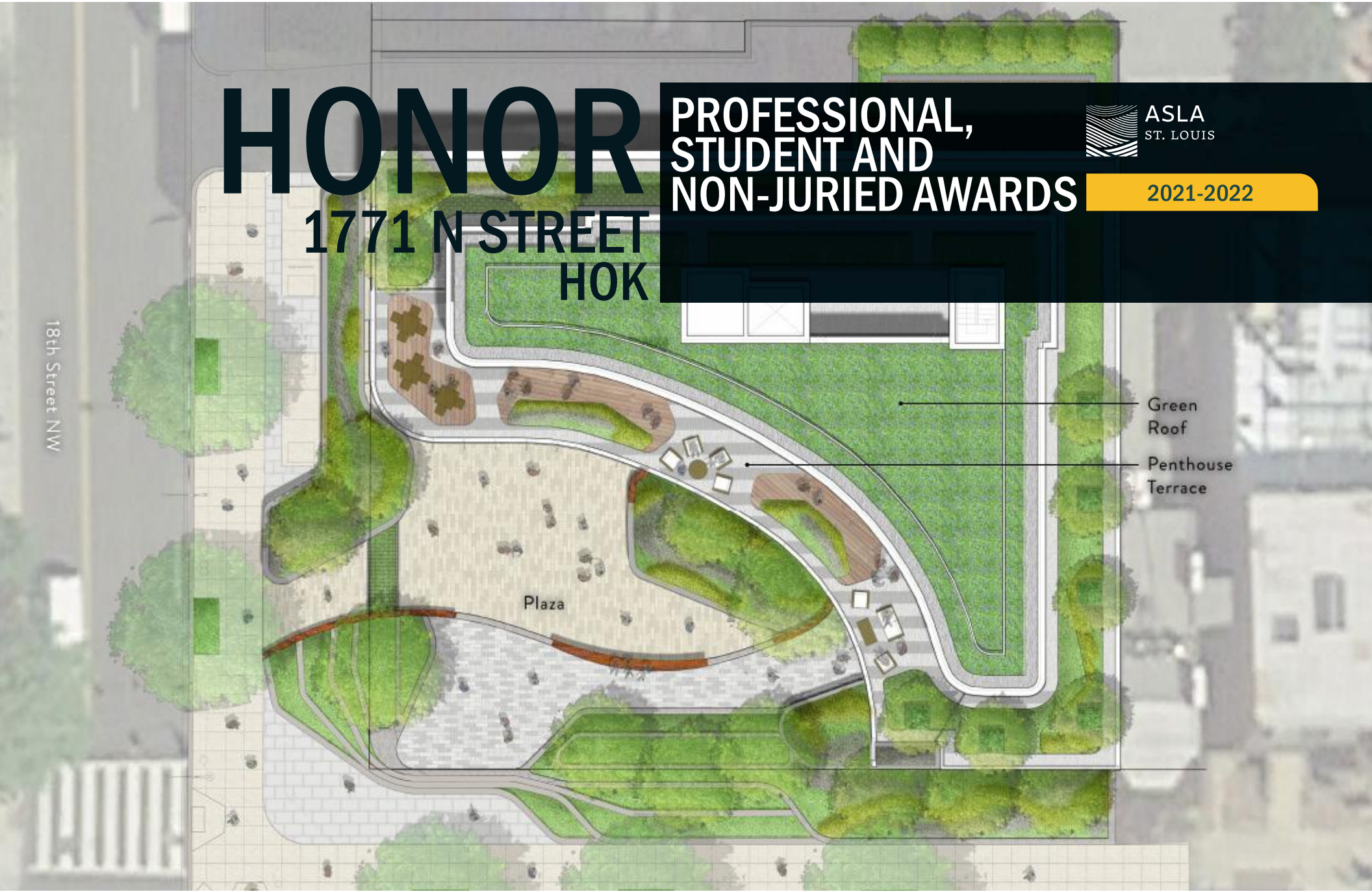
2021-2022

18th Street NW

Plaza

Green
Roof

Penthouse
Terrace





JURY SAYS: “Sharp!
Crisp, clean, great lines.
Big fan of the paver
choices and design.”





HONOR

1771 N STREET
HOK

PROFESSIONAL,
STUDENT AND
NON-JURIED AWARDS



2021-2022

thank
you

PROFESSIONAL JURY

Pennsylvania-Delaware Chapter:

Bill Moldovan - Civil and Environmental

Consultants; Misa Chen - Studio Edition; Jayson

Livingston - Strada Architecture; Abigail Long -

Studio Bryan Hanes; Takashi Sato - OLIN; Leigh Ann

Campbell - Pennsylvania Horticultural Society

STUDENT JURY

Jonathan Ryan - Christner; Adam Bachtel - LJC;

Scott Emmelkemp - PDS; Kenneth Brandl - HOK;

Caroline Finck - LJC; Scott Runde - SWT; Michelle

Ohle - DTLS; Sara Poetting - RDG Planning &

Design; Lauren McDaniel - DTLS

PROFESSIONAL, STUDENT AND NON-JURIED AWARDS



2021-2022



ST. LOUIS CHAPTER OF THE
AMERICAN SOCIETY OF LANDSCAPE ARCHITECTS

PROFESSIONAL, STUDENT AND NON-JURIED AWARDS

2021-2022